



OWNER'S MANUAL

JSJ-3X Short Service Jack



JET EQUIPMENT & TOOLS, INC.

A WMH Company
www.jettools.com

P.O. BOX 1349
Auburn, WA 98071-1349
e-mail jet@jettools.com

253-351-6000
Fax 800-274-6840
M-454223 10/01

Important Information

1-YEAR LIMITED WARRANTY

**JET offers a one-year limited
warranty on this product**

REPLACEMENT PARTS

Replacement parts for this tool are available directly from JET Equipment & Tools. To place an order, call 1-800-274-6848. Please have the following information ready:

1. Visa, MasterCard, or Discover Card number
2. Expiration date
3. Part number listed within this manual
4. Shipping address other than a Post Office box.

REPLACEMENT PART WARRANTY

JET Equipment & Tools makes every effort to assure that parts meet high quality and durability standards and warrants to the original retail consumer/purchaser of our parts that each such part(s) to be free from defects in materials and workmanship for a period of thirty (30) days from the date of purchase.

PROOF OF PURCHASE

Please retain your dated sales receipt as proof of purchase to validate the warranty period.

LIMITED TOOL AND EQUIPMENT WARRANTY

JET makes every effort to assure that its products meet high quality and durability standards and warrants to the original retail consumer/purchaser of our products that each product be free from defects in materials and workmanship as follows: 1 YEAR LIMITED WARRANTY ON THIS JET PRODUCT. Warranty does not apply to defects due directly or indirectly to misuse, abuse, negligence or accidents, repairs or alterations outside our facilities or to a lack of maintenance. JET LIMITS ALL IMPLIED WARRANTIES TO THE PERIOD SPECIFIED ABOVE FROM THE DATE THE PRODUCT WAS PURCHASED AT RETAIL. EXCEPT AS STATED HEREIN, ANY IMPLIED WARRANTIES OR MERCHANTABILITY AND FITNESS ARE EXCLUDED. SOME STATES DO NOT ALLOW LIMITATIONS ON HOW LONG THE IMPLIED WARRANTY LASTS, SO THE ABOVE LIMITATION MAY NOT APPLY TO YOU. JET SHALL IN NO EVENT BE LIABLE FOR DEATH, INJURIES TO PERSONS OR PROPERTY OR FOR INCIDENTAL, CONTINGENT, SPECIAL OR CONSEQUENTIAL DAMAGES ARISING FROM THE USE OF OUR PRODUCTS. SOME STATES DO NOT ALLOW THE EXCLUSION OR LIMITATION OF INCIDENTAL OR CONSEQUENTIAL DAMAGES, SO THE ABOVE LIMITATION OR EXCLUSION MAY NOT APPLY TO YOU. To take advantage of this warranty, the product or part must be returned for examination, postage prepaid, to an authorized service station designated by our Auburn office. Proof of purchase date and an explanation of the complaint must accompany the merchandise. If our inspection discloses a defect, JET will either repair or replace the product or refund the purchase price, if we cannot readily and quickly provide a repair or replacement, if you are willing to accept such refund. JET will return repaired product or replacement at JET's expense, but if it is determined there is no defect, or that the defect resulted from causes not within the scope of JET's warranty, then the user must bear the cost of storing and returning the product. This warranty gives you specific legal rights, and you have other rights, which vary, from state to state.

JET Equipment & Tools • P.O. Box 1349, Auburn, WA 98071-1349 • (253) 351-6000

WARNING

1. This is a lifting device only. Do not move or dolly the vehicle while on the jack. The load shall be supported immediately by other appropriate means.
2. Do not overload. Overloading can cause damage to or failure of the jack.
3. Lift only on areas of the vehicle specified by the vehicle manufacturer.
4. This jack is designed for use on hard, level surfaces capable of sustaining the load. Use on other than hard, level surfaces can result in jack instability and possible loss of load.
5. Do not get under vehicle while jack is being used as the only support.
6. If jack needs service, contact your local JET distributor for the location of the closest JET Service Station.
7. Use only factory replacement parts when replacement of parts is necessary.
8. Failure to comply with all of these warnings may result in loss of load, damage to jack, and/or failure resulting in personal injury or property damage.

Specifications:

JSJ-3X

Stock Number.....	454223
Rated Capacity.....	3 Ton
Minimum Height.....	5-1/2"
Maximum Height.....	21"
Saddle.....	5-1/8"
Overall Length.....	26"
Overall Width.....	13"
Handle Length.....	37 3/4"
Net Weight (approx.).....	86 lb.
Shipping Weight (approx.).....	90 lb.

Assembly

Note: For parts identification, refer to parts list.

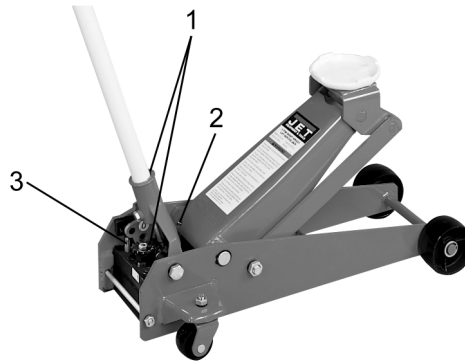
1. Insert upper handle (34, page 5) into lower handle (32, page 5) and fasten with hex cap bolt (31, page 5).
2. Remove handle bolt (25, page 5).
3. Insert handle assembly into handle socket (27, page 5). Make sure handle assembly engages gear shaft (29, page 5) by turning handle back and forth and observing movement of handle socket gear (14, page 7).
4. Install handle bolt (25, page 5) to secure handle assembly.

Lubrication

Note: Before initial operation, lubricate the jack.

1. Handle - use #2 tube grease on release valve gears below handle and lightly grease handle at point where it fits into socket.
2. Lifting Arm - inject #2 tube grease into grease fitting.
3. Plunger - use #2 tube grease to lubricate pump plunger.
4. Lubricate pivoting and moving parts with a 30W oil.

Lubrication Points



Operating Instructions

Important: Sometimes during shipment and handling, air gets into the hydraulic system, causing poor lifting performance. Before initial operation, purge any air from the system by fully opening release (turn handle counter-clockwise). Then, while holding the saddle down, pump handle rapidly several times.

Raising the Jack

1. Turn handle clockwise, until resistance is felt, to close release valve. Do not over tighten.
2. Place jack directly under object to be lifted. Make sure saddle takes up weight firmly, and centrally. Check positioning under slight load to confirm jack or load will not slip.
3. Raise jack by pumping handle until desired height is reached. After lifting, secure load by appropriate means. Do not use jack as the only means of support.

Lowering the Jack

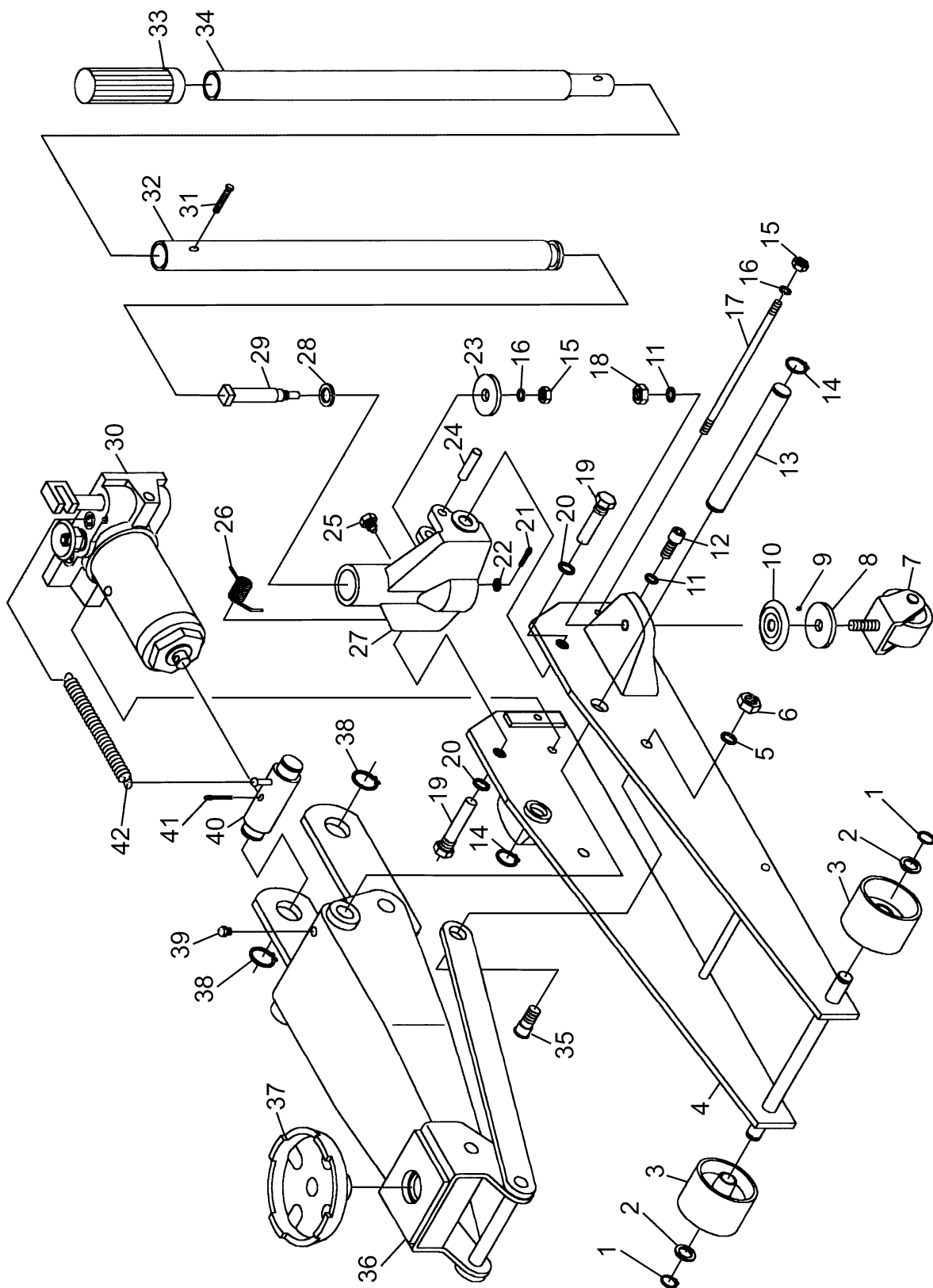
1. Slowly turn handle counter-clockwise. Speed of descent is controlled by how much the release valve is turned.

Always store jack in the fully lowered position.

Troubleshooting

If jack fails to raise to its limit, remove oil fill plug (7, page 7). Fill with just enough quality hydraulic jack fluid so that the jack raises to its limit.

Main Body Assembly

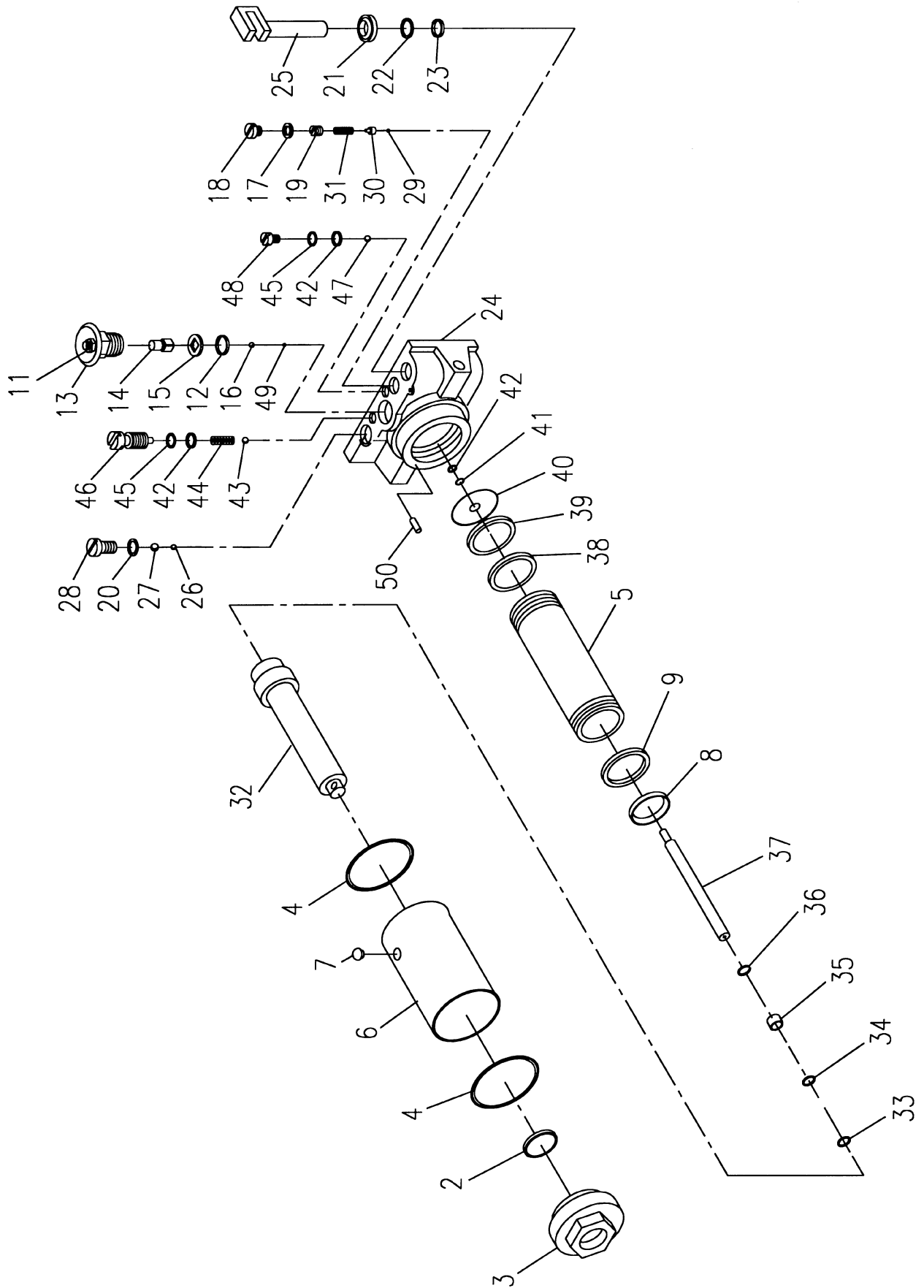


Main Body Assembly

Index No.	Part No.	Description	Size	Qty.
1	JSJ3S-01	Retainer Ring*		2
2	JSJ3S-02	Washer		2
3	JSJ3S-03	Front Wheel*		2
4	JSJ3S-04	Side Plate Assembly		1
5	JSJ3S-05	Lock Washer		2
6	JSJ3S-06	Nut	M16	2
7	JSJ3S-07	Caster Assembly* (inclds: #7-10)		2
8		Ball Ring		2
9		Ball Bearing		38
10		Ball Cover		2
11	JSJ3S-11	Lock Washer		4
12	JSJ3S-12	Socket Head Cap Screw	M12x25	2
13	JSJ3S-13	Arm Shaft		1
14	JSJ3S-14	Retainer Ring		2
15	JSJ3S-15	Nut	M10	3
16	JSJ3S-16	Lock Washer		3
17	JSJ3S-17	Shaft		1
18	JSJ3S-18	Nut	M12	2
19	JSJ3S-19	Bolt		2
20	JSJ3S-20	Lock Washer		2
21	JSJ3S-21	Pin		1
22	JSJ3S-22	Washer		1
23	JSJ3S-23	Gear		1
24	JSJ3S-24	Pump Pin		1
25	JSJ3S-25	Bolt		1
26	JSJ3S-26	Torsion Spring*		1
27	JSJ3S-27	Handle Socket		1
28	JSJ3S-28	Washer		1
29	JSJ3S-29	Gear Shaft		1
30	JSJ3X-30	Power Unit Assembly		1
31	JSJ3S-31	Bolt*	M6x35	1
32	JSJ3S-32	Lower Handle*		1
33	JSJ3S-33	Handle Grip*		1
34	JSJ3S-34	Upper Handle*		1
35	JSJ3S-35	Bolt		2
36	JSJ3S-36	Lifting Arm Assembly		1
37	JSJ3S-37	Saddle*		1
38	JSJ3S-38	Retainer Ring		2
39	JSJ3S-39	Grease Fitting		1
40	JSJ3S-40	Cross Head		1
41	JSJ3S-41	Pin		1
42	JSJ3S-42	Return Spring*		1

* Indicates normal stocked part. Other parts may be purchased on a special order basis only.
Contact JET Equipment & Tools (1-800-274-6848) for details.

Power Unit Assembly



Power Unit Assembly

Index No.	Part No.	Description	Size	Qty.
2	JSJ3X-P02	O-Ring **	30x3.55	1
3	JSJ3X-P03	Tank Nut		1
4	JSJ3X-P04	O-Ring **		2
5	JSJ3X-P05	Cylinder		1
6	JSJ3X-P06	Oil Tank		1
7	JSJ3X-P07	Oil Fill Plug **		1
8	JSJ3X-P08	U-Cup **		1
9	JSJ3X-P09	O-Ring **	33x3.55	1
11	JSJ3X-P11	Gear Retaining Nut	M8	1
12	JSJ3X-P12	O-Ring **	16x2.4	1
13	JSJ3X-P13 JSJ3S-P15	Release Valve Assembly *		1
14	JSJ3X-P14	Valve Stem		1
15	JSJ3X-P15	Guide Plate		1
16	JSJ3X-P16	Ball	6	1
17	JSJ3X-P17	Seal Washer **		1
18	JSJ3X-P18	Screw		1
19	JSJ3X-P19	Adjustment Screw		1
20	JSJ3X-P20	Seal Washer **		1
21	JSJ3X-P21	Wiper **		1
22	JSJ3X-P22	Back Up Ring **		1
23	JSJ3X-P23	O-ring **	16x2.4	1
24	JSJ3X-P24	Base		1
25	JSJ3X-P25	Piston Pump		1
26	JSJ3X-P26	Ball	4	1
27	JSJ3X-P27	Ball	6	1
28	JSJ3X-P28	Screw		1
29	JSJ3X-P29	Ball	4	1
30	JSJ3X-P30	Adapter		1
31	JSJ3X-P31	Spring		1
32	JSJ3X-P32	Ram		1
33	JSJ3X-P33	O-ring **	14x2.4	1
34	JSJ3X-P34	Washer		1
35	JSJ3X-P35	Back Up Ring		1
36	JSJ3X-P36	Spring		1
37	JSJ3X-P37	Ram		1
38	JSJ3X-P38	Back Up Ring **		1
39	JSJ3X-P39	O-ring **	50x2.4	1
40	JSJ3X-P40	Cylinder Gasket **		1
41	JSJ3X-P41	Spring		1
42	JSJ3X-P42	O-ring **	6x3	3
43	JSJ3X-P43	Ball	6	1
44	JSJ3X-P44	Spring		1
45	JSJ3X-P45	Back Up Ring **		2
46	JSJ3X-P46	Screw		1
47	JSJ3X-P47	Ball	6	1
48	JSJ3X-P48	Screw		1
49	JSJ3X-P49	Ball	3	1
50	JSJ3X-P50	Pin		1
	JSJ3S-SK	Seal Kit * (inclds parts marked with an "***")		
	JSJ3X-30	Power Unit Assembly (inclds: index numbers 2-50)		

TG

* Indicates normal stocked part. Other parts may be purchased on a special order basis only.
Contact JET Equipment & Tools (1-800-274-6848) for details.



TEST CERTIFICATE

COMMODITY	Short Service Jack
MODEL	JSJ-3X
SERIAL NO.	
CAPACITY	3 Ton
TEST LOAD	Ton
DATE OF INSPECTION	
JUDGEMENT	PASSED
INSPECTOR	

JET EQUIPMENT & TOOLS, INC.
A WMH Company
www.jettools.com

2415 West Valley Highway N
P.O. Box 1349
Auburn, WA 98071-1349

Fax: 800-274-6840
Phone: 253-351-6000
e-mail: jet@jettools.com