

J E T

EQUIPMENT & TOOLS

OPERATOR'S MANUAL

JSJ-2M Service Jack



JET EQUIPMENT & TOOLS, INC.
A WMH - Walter Meier Holding Company

P.O. BOX 1349
Auburn, WA 98071-1349

253-351-6000
Fax 253-939-8001

No. M-454320 7/97

Important Information

1-YEAR LIMITED WARRANTY

**JET offers a one-year limited
warranty on this product**

REPLACEMENT PARTS

Replacement parts for this tool are available directly from JET Equipment & Tools. To place an order, call 1-800-274-6848. Please have the following information ready:

1. Visa, MasterCard, or Discover Card number
2. Expiration date
3. Part number listed within this manual
4. Shipping address other than a Post Office box.

REPLACEMENT PART WARRANTY

JET Equipment & Tools makes every effort to assure that parts meet high quality and durability standards and warrants to the original retail consumer/purchaser of our parts that each such part(s) to be free from defects in materials and workmanship for a period of thirty (30) days from the date of purchase.

PROOF OF PURCHASE

Please retain your dated sales receipt as proof of purchase to validate the warranty period.

LIMITED TOOL AND EQUIPMENT WARRANTY

JET makes every effort to assure that its products meet high quality and durability standards and warrants to the original retail consumer/purchaser of our products that each product be free from defects in materials and workmanship as follows: **1 YEAR LIMITED WARRANTY ON THIS JET PRODUCT.** Warranty does not apply to defects due directly or indirectly to misuse, abuse, negligence or accidents, repairs or alterations outside our facilities or to a lack of maintenance. JET LIMITS ALL IMPLIED WARRANTIES TO THE PERIOD SPECIFIED ABOVE FROM THE DATE THE PRODUCT WAS PURCHASED AT RETAIL. EXCEPT AS STATED HEREIN, ANY IMPLIED WARRANTIES OR MERCHANTABILITY AND FITNESS ARE EXCLUDED. SOME STATES DO NOT ALLOW LIMITATIONS ON HOW LONG THE IMPLIED WARRANTY LASTS, SO THE ABOVE LIMITATION MAY NOT APPLY TO YOU. JET SHALL IN NO EVENT BE LIABLE FOR DEATH, INJURIES TO PERSONS OR PROPERTY OR FOR INCIDENTAL, CONTINGENT, SPECIAL OR CONSEQUENTIAL DAMAGES ARISING FROM THE USE OF OUR PRODUCTS. SOME STATES DO NOT ALLOW THE EXCLUSION OR LIMITATION OF INCIDENTAL OR CONSEQUENTIAL DAMAGES, SO THE ABOVE LIMITATION OR EXCLUSION MAY NOT APPLY TO YOU. To take advantage of this warranty, the product or part must be returned for examination, postage prepaid, to an authorized service station designated by our Auburn office. Proof of purchase date and an explanation of the complaint must accompany the merchandise. If our inspection discloses a defect, JET will either repair or replace the product or refund the purchase price, if we cannot readily and quickly provide a repair or replacement, if you are willing to accept such refund. JET will return repaired product or replacement at JET's expense, but if it is determined there is no defect, or that the defect resulted from causes not within the scope of JET's warranty, then the user must bear the cost of storing and returning the product. This warranty gives you specific legal rights, and you have other rights, which vary, from state to state.

JSJ-2M SERVICE JACK

Your JET Service Jack is engineered and fabricated to suit your requirements. With our experienced technical background, a rigid inspection by our well organized Quality Assurance Group, your jack is guaranteed with confidence for its long and trouble-free life.

1. Precautions

1. This jack is designed for lifting vehicles only.
2. The vehicle owner's manual should be consulted prior to the lifting of the vehicle.
3. The jack **must** be on level and solid ground with wheels of vehicle facing straight ahead.
4. **No one** should remain in a vehicle that is being lifted.
5. When lifting the vehicle, be sure to place the axle right on the center of the jack saddle.
6. After lifting the vehicle, be sure to **place safety stands** under the axles.
7. **NEVER** get under a vehicle that is supported only by a jack.
8. **NEVER** move the jack while it is supporting the vehicle.
9. When lowering the vehicle, make sure **nobody** is around or under the lifted vehicle and **slowly** lower the vehicle with special attention to jack saddle.
10. Safety valve is factory adjusted and no further adjustment is required.
11. While not in use, **always** keep the handle straight up and locked so that it won't fall.

2. Operating Instructions

Before using the jack:

1. Insert the handle into handle socket fully and tighten the thumb screw on the socket securely.
2. Open the release valve by turning the release valve control knob counter-clockwise and pump the handle about 6 full strokes to let the air out of the hydraulic system.

Then close the release valve by turning the release valve control knob clockwise as far as it will go. Pump the handle up to full extension of jack. Lower the jack by opening the release valve.

Note: If the jack does not immediately respond to pump action, repeat step 2 above.

To use the jack:

1. To raise the vehicle, close the release valve by turning release valve control knob clockwise as far as it will go. Then carefully position the jack under the vehicle. Pump the jack handle to lift the vehicle to the desired height.
2. To lower the vehicle, **SLOWLY** and **CAREFULLY** rotate the release valve control knob counterclockwise. Descending speed can be controlled by opening amount of release valve.
3. When the jack is transported, the handle may be removed and carried separately.

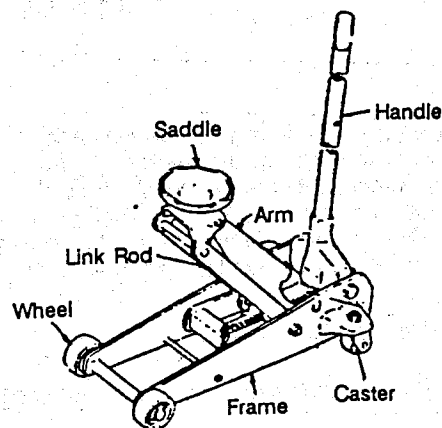
3. Specifications

MODEL	JSJ-2M
STOCK	454320
CAPACITY	2 TON
MIN. HEIGHT	5-1/8 in.
MAX. HEIGHT	19-1/4 in.
OVERALL LENGTH	36-1/4 in.
OVERALL WIDTH	13-3/4 in.
HANDLE	41-1/4 in.
WEIGHT	99 lbs.

FEATURES

Strong steel side plate
 Swivel saddle
 Heat Treated parts at maximum stress points
 Heavy duty application
 Locking "T" bar handles and foot pump
 Hydraulic cylinder parts high pressure tested at the factory

4. Name of Principal Parts



5. Maintenance and Care

Check Points	Check Item	Remarks
Arm	Functional condition (Pump the jack to its full lifting height with no load then check smooth action of the lift arm)	Lubricate Pin and Functional portions Replace distorted or damaged parts
Front Wheel	Functional condition	Lubricate functional portion Replace damaged or worn-out
Rear Wheel	Functional condition	Lubricate functional portions Replace damaged or wear parts Tighten securely loose bolts
Power Unit	Proper oil level Oil leakage	Supply oil, if necessary (Replace oil in the reservoir at least once a year) Replace packing
Handle	Functional Condition or loose	Lubricate pin or functional portions Tighten securely loose bolts Replace damaged parts

Note: 1. Oil for functional portion: Lubricatory oil
 2. Oil for jack: Hydraulic jack oil or bearing oil TSO VG 10
 NEVER use brake fluid or any other high viscous or volatile oil

6. Possible Problems and Remedies

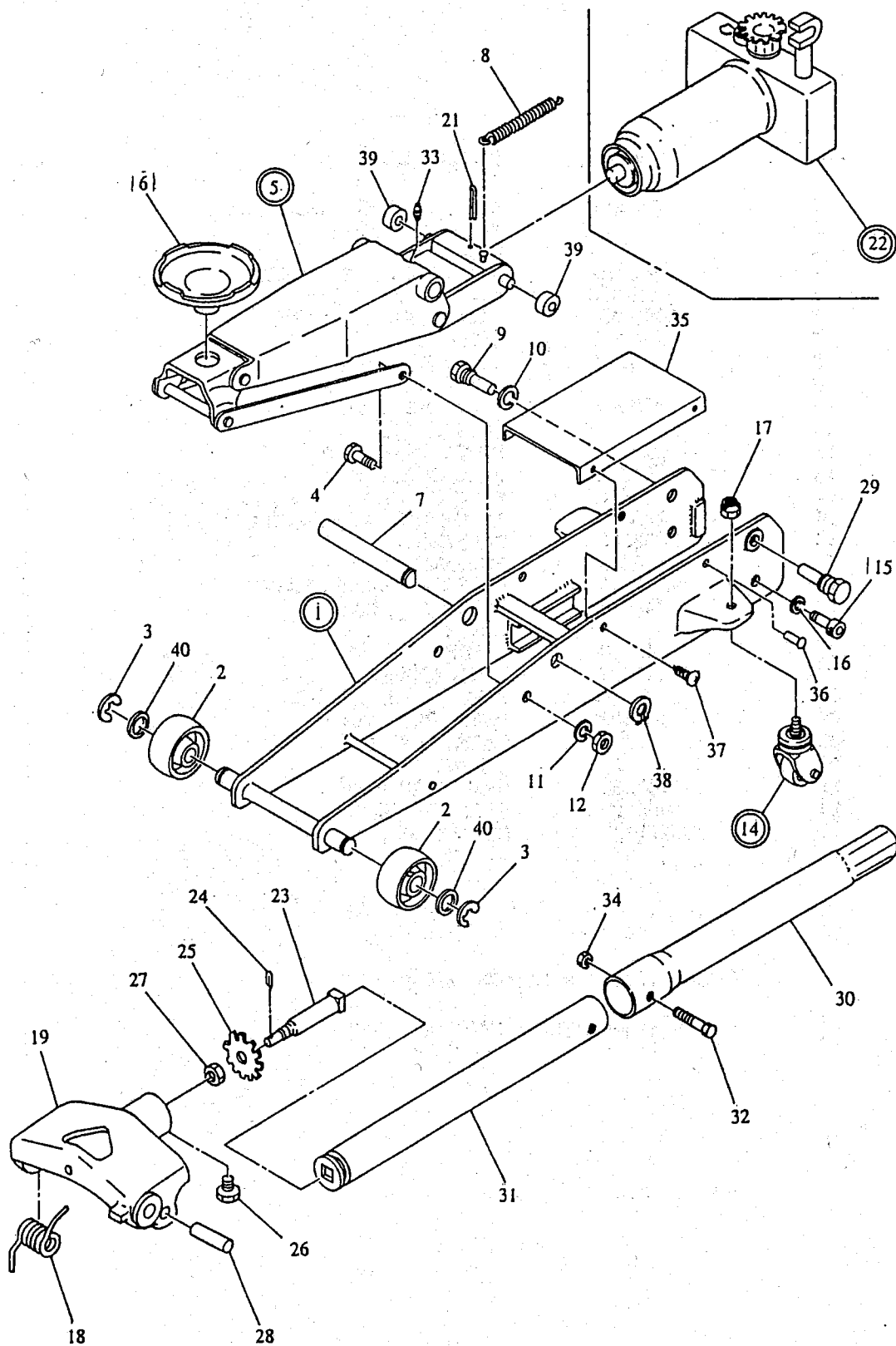
Possible Problem	Possible Cause	Remedy
Will not lift at all	Release Valve not properly closed No oil in system Delivery Valve and/or By-Pass Valve malfunctioning (Valve Ball not properly seated) Packing worn out or defective	Tighten securely Fill to prescribed level Clean to remove dirt or foreign matter and replace oil Replace Packing
Will lift only part way	Oil level low or too high	Fill or remove excess oil
Will lift load, but will not hold	Either of the following valves not functioning a. Suction Valve b. Delivery Valve c. Release Valve d. By-Pass Valve Packing worn out or defective	Inspect Valves-clean and adjust seat surface Replace Packing
Will not lower	Release Valve not opening	Clean and adjust Release Valve
Poor lifting	Pump Packing defective or Valves malfunctioning Dirty oil Air in system	Replace Packings and/or clean Valves Replace oil Remove air from system
Will not lower completely	Piston Rod bent or marred Jack Spring damaged Link section warped or deformed due to possible over-loading	Replace Piston Rod Replace Spring Replace warped parts

FRAME ASSEMBLY

ITEM	PART #	DESCRIPTION	QTY
1	A429100	SIDE PLATE & AXLE ASSY	1
2	246301	FRONT WHEEL	2
3	429303	RETAINING RING	2
4	246208	LINK BOLT	2
5	A429200	LIFT ARM & LINK ASSY	1
6	408204	SADDLE	1
7	246202	ARM PIN	1
8	246210	RETURN SPRING	1
9	246608	HANDLE SOCKET PIN	1
10	TS-1551111	LOCKWASHER M18	1
11	TS-1551101	LOCKWASHER M16	2
12	TS-1540101	NUT M16X2P	2
14	A408400	REAR WHEEL ASSY	2
15	TS-1506021	SOCKET HEAD CAP SCREW	2
16	TS-1551081	LOCKWASHER M12	2
17	TS-1540083	LOCK NUT M12X1.25	2
18	246609	SPRING	1
19	408603	HANDLE SOCKET	1
21	246219	COTTER PIN	1
22	A408500	POWER UNIT ASSY	1
23	408701	GEAR SHAFT	1
24	408704	COTTER PIN	1
25	408702	HANDLE SOCKET GEAR	1
26	246605	HANDLE BOLT	1
27	246703	NUT	1
28	246610	PUMP PLUNGER PIN	1
29	246611	BOLT	1
30	408602	HANDLE (UPPER)	1
31	408601	HANDLE (LOWER)	1
32	TS-1503101	SOCKET HEAD CAP SCREW	1
33	246217	GREASE FITTING	1
34	TS-1540041	NUT M6X1	1
35	262112	COVER	1
36	262113	RIVET	2
37	TS-153206202	SCREW	2
38	262214	RETAINER RING	1
39	262220	GUIDE ROLLER	2
40	262302	FRONT COLLAR	2

Please order parts by PART #

FRAME ASSEMBLY



POWER UNIT

ITEM	PART #	DESCRIPTION	QTY
1	246512	RAM PACKING SHEET	1
2	*	BACKUP RING	1
3	*	RAM O-RING	1
4	246519	RAM O-RING RETAINER	1
5	SB-3/8	STEEL BALL 3/8	2
6	A408511	RAM PLUNGER ASSY	1
7	246528	SNAP RING	2
8	408525	STOPPER RING	1
9	*	CYLINDER O-RING	1
10	408527	STUFFING RING	1
11	*	OIL FILL PLUG	1
12	SB-5/32	STEEL BALL 5/32	1
13	246536	BALL SHEET S.V.	1
14	246535	SPRING S.V.	1
15	246532	ADJUSTING SCREW S.V.	1
16	408538	PACKING	1
17	408533	PUSHING NUT	1
18	A246545	RELEASE VALVE ASSY	1
19	246546	RELEASE VALVE	1
20	*	O-RING	1
21	246550	GUIDE	1
22	246507	PLUG (SCREW)	1
23	SB-1/4	STEEL BALL 1/4	1
24	408503	PUMP PLUNGER	1
25	*	BACKUP RING	1
26	*	O-RING	2
27	408530	RAM SNAP RING	1
28	408529	STOPPER RING B	1
	JSJ2M-RK	REPAIR KIT	1

* Part included in REPAIR KIT only

Please order parts by PART #

POWER UNIT ASSEMBLY

