



FILE

OPERATOR'S MANUAL

JSJ-10M SERVICE JACK

Stock No. M-454310

FILE

J. SG-10M

JSJ-10M SERVICE JACK

Your JET Service Jack is engineered and fabricated to suit your requirements. With our experienced technical background, a rigid inspection by our well organized Quality Assurance Group, your jack is guaranteed with confidence for its long and trouble-free life.

1. Precautions

1. This jack is designed for lifting vehicles only.
2. The vehicle owner's manual should be consulted prior to the lifting of the vehicle.
3. The jack **must** be on level and solid ground with wheels of vehicle facing straight ahead.
4. **No one** should remain in a vehicle that is being lifted.
5. When lifting the vehicle, be sure to place the axle right on the center of the jack saddle.
6. After lifting the vehicle, be sure to **place safety stands** under the axles.
7. **NEVER** get under a vehicle that is supported only by a jack.
8. **NEVER** move the jack while it is supporting the vehicle.
9. When lowering the vehicle, make sure **nobody** is around or under the lifted vehicle and **slowly** lower the vehicle with special attention to jack saddle.
10. Safety valve is factory adjusted and no further adjustment is required.
11. While not in use, **always** keep the handle straight up and locked so that it won't fall.

2. Operating Instructions

Before using the jack:

1. Insert the handle into handle socket fully and tighten the thumb screw on the socket securely.
2. Open the release valve by turning the release valve control knob counter-clockwise and pump the handle about 6 full strokes to let the air out of the hydraulic system.

Then close the release valve by turning the release valve control knob clockwise as far as it will go. Pump the handle up to full extension of jack. Lower the jack by opening the release valve.

Note: If the jack does not immediately respond to pump action, repeat step 2 above.

To use the jack:

1. To raise the vehicle, close the release valve by turning release valve control knob clockwise as far as it will go. Then carefully position the jack under the vehicle. Pull the lock lever up and push it over to the left to slide into upper slot, then start pumping the handle. A foot pumping pedal is also provided for faster operation. Pump the jack handle to lift the vehicle to the desired height.
2. To lower the vehicle, **SLOWLY** and **CAREFULLY** rotate the release valve control knob counterclockwise. Descending speed can be controlled by opening amount of release valve.
3. When the jack is transported, the handle may be removed and carried separately.

FILE
JSJ-10M

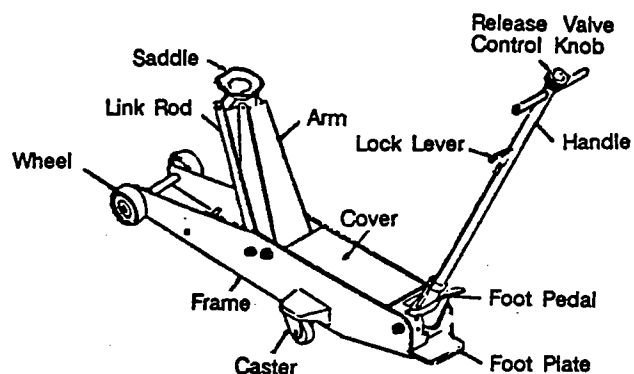
3. Specifications

MODEL	JSJ-5M
STOCK	454350
CAPACITY	5 TON
MIN. HEIGHT	5-7/8 in.
MAX. HEIGHT	22 in.
OVERALL LENGTH	55-1/2 in.
OVERALL WIDTH	14-5/16 in.
HANDLE	42-1/8 in.
WEIGHT	187 lbs.

FEATURES

Strong steel side plate
 Swivel saddle
 Heat Treated parts at maximum stress points
 Heavy duty application
 Locking "T" bar handles and foot pump
 Hydraulic cylinder parts high pressure tested at the factory

4. Name of Principal Parts



5. Maintenance and Care

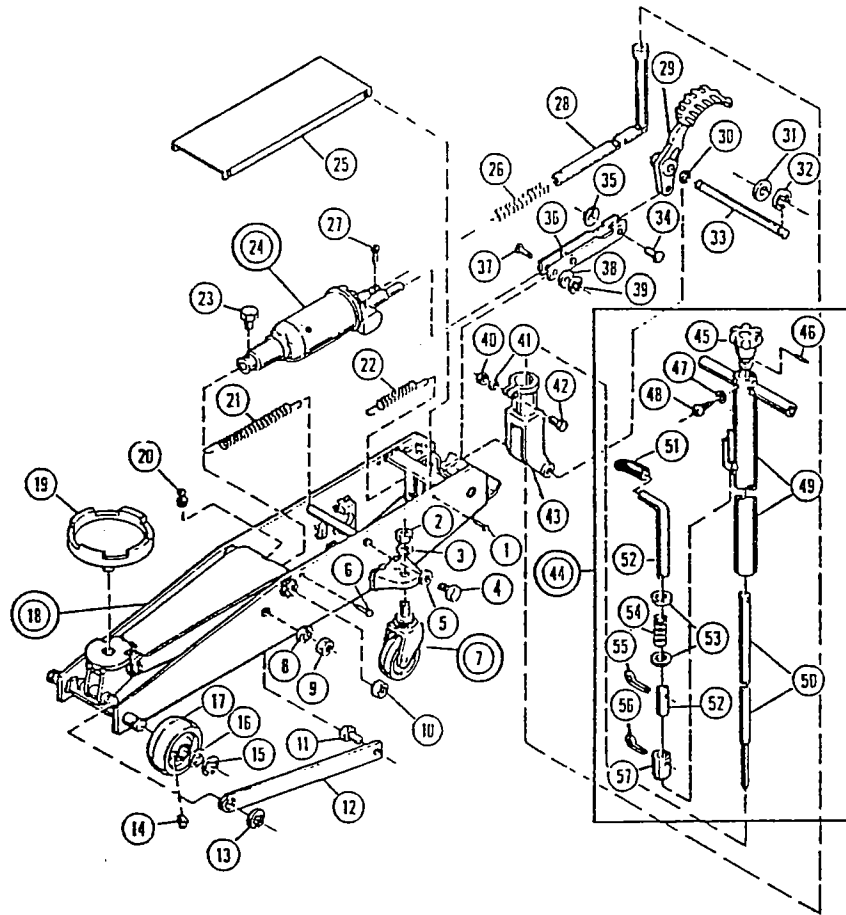
Check Points	Check Item	Remarks
Arm	Functional condition (Pump the jack to its full lifting height with no load then check smooth action of the lift arm)	Lubricate Pin and Functional portions Replace distorted or damaged parts
Front Wheel	Functional condition	Lubricate functional portion Replace damaged or worn-out
Rear Wheel	Functional condition	Lubricate functional portions Replace damaged or wear parts Tighten securely loose bolts
Power Unit	Proper oil level Oil leakage	Supply oil, if necessary (Replace oil in the reservoir at least once a year) Replace packing
Handle	Functional Condition or loose	Lubricate pin or functional portions Tighten securely loose bolts Replace damaged parts

Note: 1. Oil for functional portion: Lubricatory oil
 2. Oil for jack: Hydraulic jack oil or bearing oil TSO VG 10
 NEVER use brake fluid or any other high viscous or volatile oil

6. Possible Problems and Remedies

Possible Problem	Possible Cause	Remedy
Will not lift at all	Release Valve not properly closed No oil in system Delivery Valve and/or By-Pass Valve malfunctioning (Valve Ball not properly seated) Packing worn out or defective	Tighten securely Fill to prescribed level Clean to remove dirt or foreign matter and replace oil Replace Packing
Will lift only part way	Oil level low or too high	Fill or remove excess oil
Will lift load, but will not hold	Either of the following valves not functioning a. Suction Valve b. Delivery Valve c. Release Valve d. By-Pass Valve Packing worn out or defective	Inspect Valves-clean and adjust seat surface Replace Packing
Will not lower	Release Valve not opening	Clean and adjust Release Valve
Poor lifting	Pump Packing defective or Valves malfunctioning Dirty oil Air in system	Replace Packings and/or clean Valves Replace oil Remove air from system
Will not lower completely	Piston Rod bent or marred Jack Spring damaged Link section warped or deformed due to possible over-loading	Replace Piston Rod Replace Spring Replace warped parts

JSJ-10M



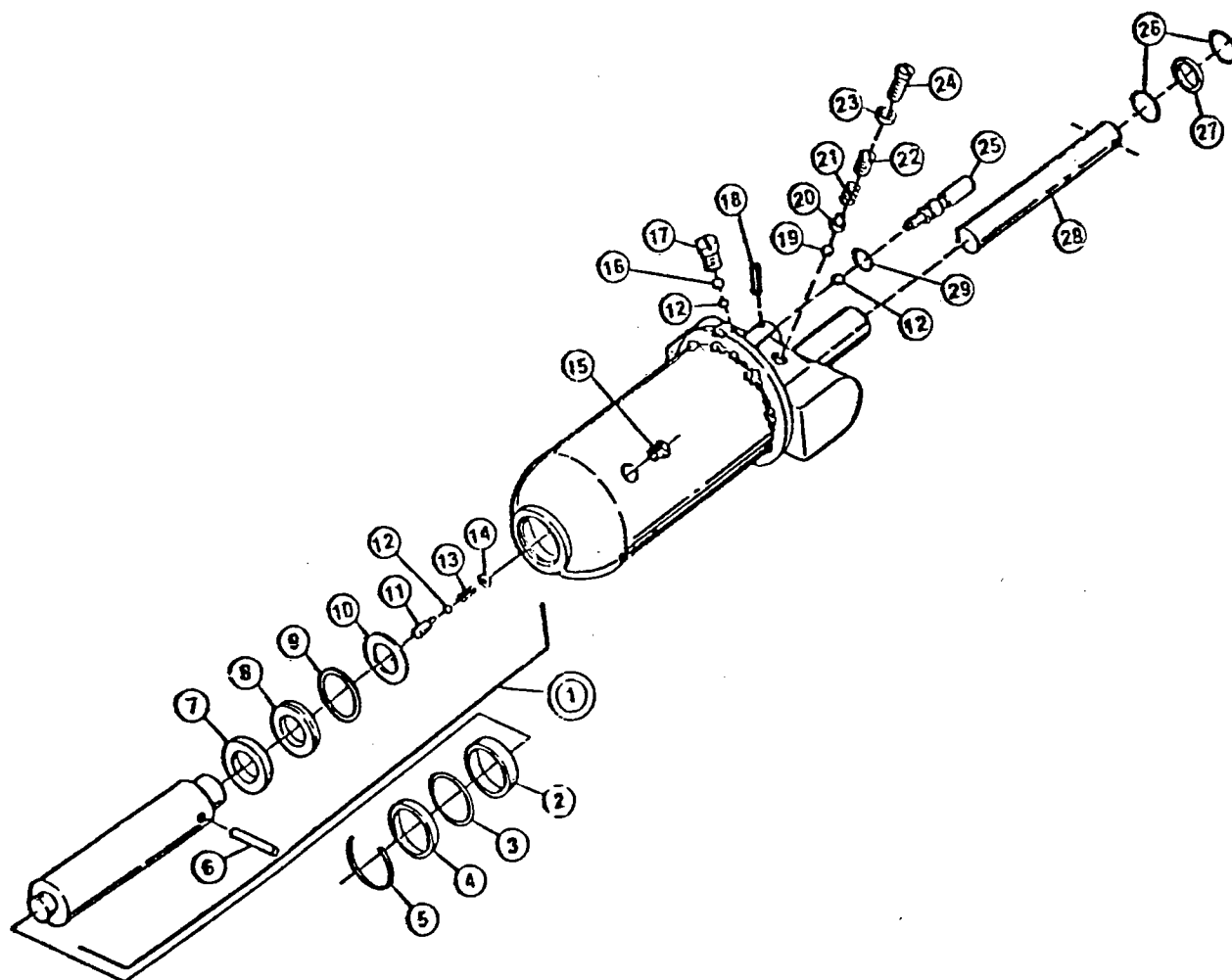
PART NO.	DESCRIPTION	PART NO.	DESCRIPTION
JSJ10M-01	RIVET	JSJ10M-30	DRY BEARING
JSJ10M-02	NUT	JSJ10M-31	WASHER
JSJ10M-03	SPRING WASHER	JSJ10M-32	E RING
JSJ10M-04	BOLT	JSJ10M-33	SHAFT
JSJ10M-05	SPRING WASHER	JSJ10M-34	LINK PIN
JSJ10M-06	SCREW	JSJ10M-35	PUSH NUT
JSJ10M-07	REAR WHEEL ASSY	JSJ10M-36	LINK
JSJ10M-08	SPRING WASHER	JSJ10M-37	PUMP PLUNGER PIN
JSJ10M-09	NUT	JSJ10M-38	WASHER
JSJ10M-10	NUT	JSJ10M-39	STOPPER RING
JSJ10M-11	LINK ROD BOLT	JSJ10M-40	NUT
JSJ10M-12	LINK ROD	JSJ10M-41	WASHER
JSJ10M-13	STOPPER RING	JSJ10M-42	BOLT
JSJ10M-14	GREASE NIPPLE	JSJ10M-43	HANDLE SOCKET
JSJ10M-15	STOPPER RING	JSJ10M-44	HANDLE ASSY
JSJ10M-16	FRONT COLLAR	JSJ10M-45	GRIP
JSJ10M-17	FRONT WHEEL	JSJ10M-46	SPRING PIN
JSJ10M-18	FRAME & LIFT ARM ASSY	JSJ10M-47	SPRING WASHER
JSJ10M-19	SADDLE	JSJ10M-48	SCREW
JSJ10M-20	GREASE NIPPLE	JSJ10M-49	HANDLE
JSJ10M-21	RETURN SPRING	JSJ10M-50	RELEASE ROD
JSJ10M-22	PEDAL SPRING	JSJ10M-51	TUBE
JSJ10M-23	BOLT	JSJ10M-52	LEVER
JSJ10M-24	POWER UNIT ASSY	JSJ10M-53	WASHER
JSJ10M-25	COVER	JSJ10M-54	LOCK SPRING
JSJ10M-26	SPRING	JSJ10M-55	COTTER PIN
JSJ10M-27	BOLT	JSJ10M-56	COTTER PIN
JSJ10M-28	UNIVERSAL JOINT	JSJ10M-57	LOCK PIN
JSJ10M-29	PEDAL		

New

JSJ-10M

FILE

POWER UNIT ASSEMBLY



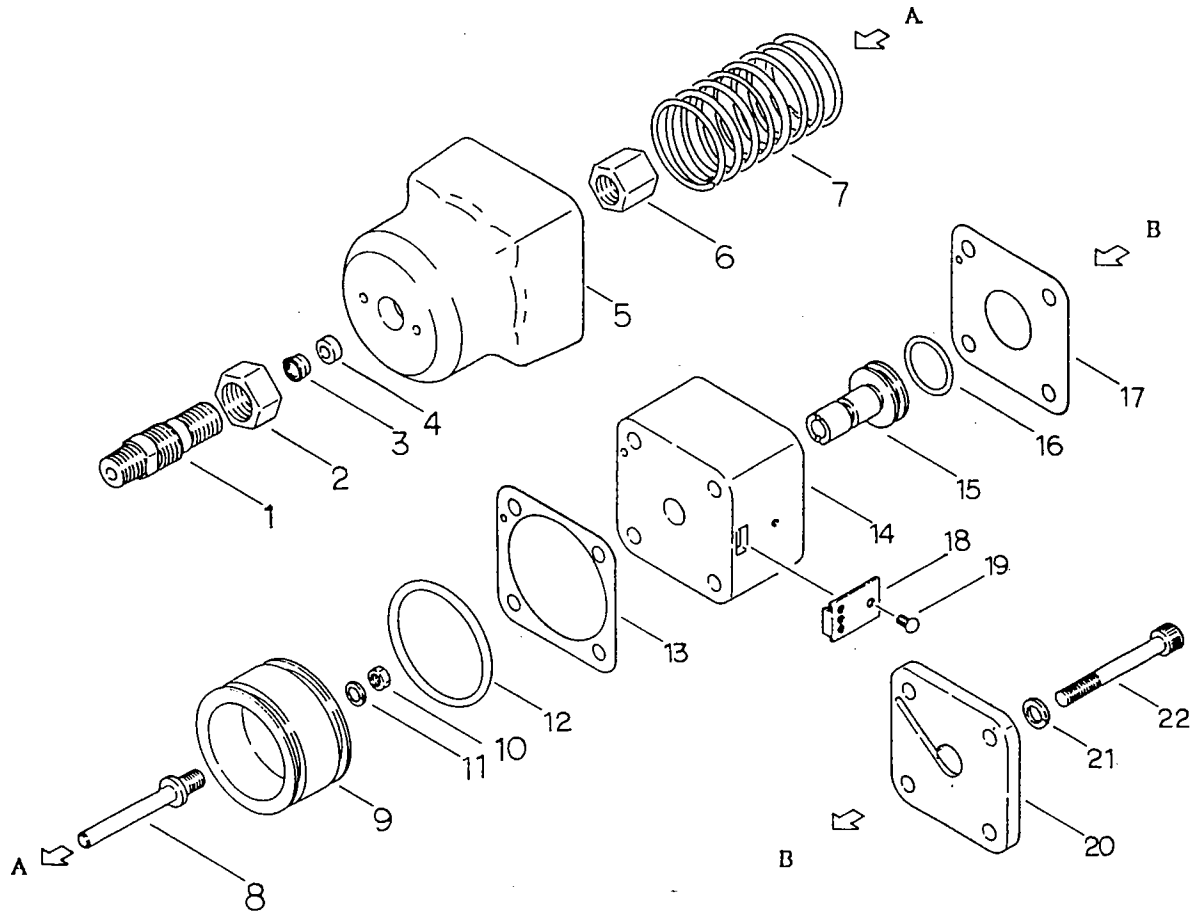
PART NO.	DESCRIPTION
JSJ10M-P01	RAM ASSY
JSJ10M-P02	STOPPER RING
JSJ10M-P03*	O RING CYLINDER
JSJ10M-P04	STUFFING RING
JSJ10M-P05	SNAP RING
JSJ10M-P06	HORIZONTAL PIN
JSJ10M-P07	PACKING SEAT
JSJ10M-P08*	BACK UP RING
JSJ10M-P09*	RAM O RING
JSJ10M-P10	RAM O RING STOPPER
JSJ10M-P11	VERTICAL PIN
JSJ10M-P12	BALL
JSJ10M-P13	RAM SPRING
JSJ10M-P14	RAM SPRING STOPPER
JSJ10M-P15*	OIL PLUG

PART NO.	DESCRIPTION
JSJ10M-P16	BALL
JSJ10M-P17	PLUG
JSJ10M-P18	SPRING PIN
JSJ10M-P19	BALL
JSJ10M-P20	BALL SEAT
JSJ10M-P21	SPRING
JSJ10M-P22	SAFETY VALVE PLUG
JSJ10M-P23*	PACKING
JSJ10M-P24	SAFETY VALVE PLUG
JSJ10M-P25	RELEASE STEM
JSJ10M-P26*	PUMP O-RING
JSJ10M-P27*	BACK UP RING
JSJ10M-P28	PUMP PLUNGER
JSJ10M-P29*	O-RING
JSJ10M-RK	REPAIR KIT

*INCLUDED IN REPAIR KIT

jsj-20m.
FILE

AIR PUMP PARTS

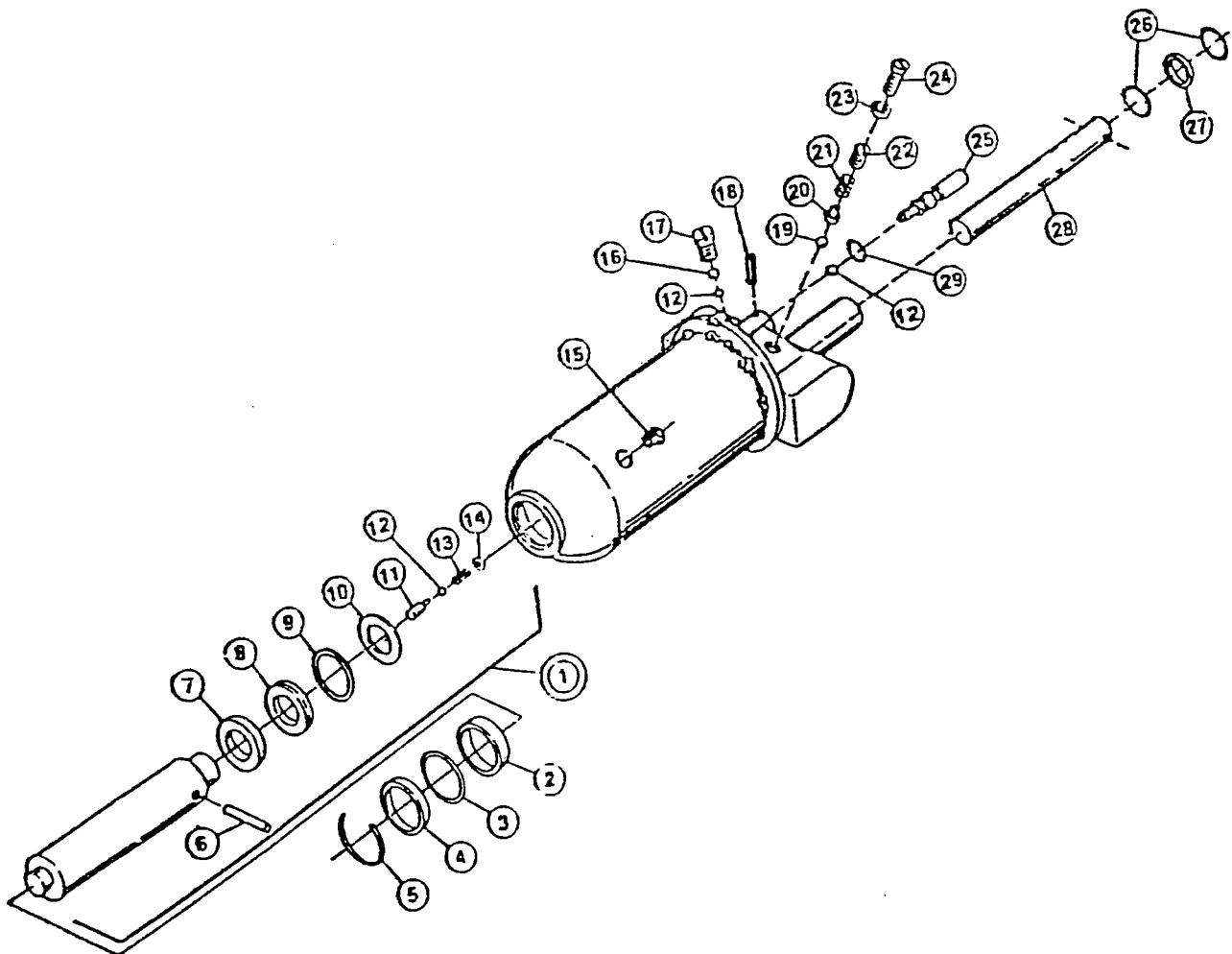


ITEM NO.	PART NO.	DESCRIPTION	QTY.	ITEM NO.	PART NO.	DESCRIPTION	QTY.
1	2459110700	BOLT, CYLINDER	1	13	2459110800	GASKET A	1
2	TS-1540121	NUT	1	14	2459110200	VALVE BODY	1
*3	2459111300	PACKING	1	15	2459110500	VALVE	1
*4	2459111200	SEAL RING	1	*16	74011AP24X	O-RING	1
5	2459110100	CYLINDER	1	17	2459110900	GASKET B	1
6	TS-1540101	SEAL NUT	1	18	2459111400	SILENCER	1
7	2459111100	SPRING	1	19	7122644051	TAPPING SCREW	1
8	2459110000	PISTON ROD	1	20	2459110300	HEAD CAP	1
9	2459110400	PISTON	1	21	TS-1551061	SPRING WASHER	4
10	TS-1551041	SPRING WASHER	1	22	TS-1504131	CAP SCREW	4
11	TS-1540041	NUT	1		2459100100	PUMP REPAIR KIT*	1
*12	74011AP56X	O-RING	2			(INC. 3,4,12 & 16)	

JSJ-10M

FILE

POWER UNIT ASSEMBLY



PART NO.	DESCRIPTION
JSJ10M-P01	RAM ASSY
JSJ10M-P02	STOPPER RING
JSJ10M-P03*	O RING CYLINDER
JSJ10M-P04	STUFFING RING
JSJ10M-P05	SNAP RING
JSJ10M-P06	HORIZONTAL PIN
JSJ10M-P07	PACKING SEAT
JSJ10M-P08*	BACK UP RING
JSJ10M-P09*	RAM O RING
JSJ10M-P10	RAM O RING STOPPER
JSJ10M-P11	VERTICAL PIN
JSJ10M-P12	BALL
JSJ10M-P13	RAM SPRING
JSJ10M-P14	RAM SPRING STOPPER
JSJ10M-P15*	OIL PLUG

PART NO.	DESCRIPTION
JSJ10M-P16	BALL
JSJ10M-P17	PLUG
JSJ10M-P18	SPRING PIN
JSJ10M-P19	BALL
JSJ10M-P20	BALL SEAT
JSJ10M-P21	SPRING
JSJ10M-P22	SAFETY VALVE PLUG
JSJ10M-P23*	PACKING
JSJ10M-P24	SAFETY VALVE PLUG
JSJ10M-P25	RELEASE STEM
JSJ10M-P26*	PUMP O-RING
JSJ10M-P27*	BACK UP RING
JSJ10M-P28	PUMP PLUNGER
JSJ10M-P29*	O-RING
JSJ10M-RK	REPAIR KIT

*INCLUDED IN REPAIR KIT