



Operating Instructions and Parts Manual

Air/Hydraulic Long Chassis Service Jack

Models JASJ-5L, JASJ-10L



WMH TOOL GROUP

2420 Vantage Drive
Elgin, Illinois 60123
Ph.: 800-274-6848
www.wmhtoolgroup.com

Part No. M-454450

Revision A 4/06

Copyright © WMH Tool Group

WARRANTY AND SERVICE

WMH Tool Group, Inc., warrants every product it sells. If one of our tools needs service or repair, one of our Authorized Service Centers located throughout the United States can give you quick service. In most cases, any of these WMH Tool Group Authorized Service Centers can authorize warranty repair, assist you in obtaining parts, or perform routine maintenance and major repair on your JET® tools. For the name of an Authorized Service Center in your area call 1-800-274-6848.

MORE INFORMATION

WMH Tool Group is consistently adding new products to the line. For complete, up-to-date product information, check with your local WMH Tool Group distributor, or visit jettools.com.

WARRANTY

JET products carry a limited warranty which varies in duration based upon the product (MW = Metalworking, WW = Woodworking).

<div>90</div> <div>DAY</div> <div>WARRANTY</div>	<div>1</div> <div>YEAR</div> <div>WARRANTY</div>	<div>2</div> <div>YEAR</div> <div>WARRANTY</div>	<div>5</div> <div>YEAR</div> <div>WARRANTY</div>	<div>LIFE</div> <div>LIFETIME</div> <div>WARRANTY</div>				
Lathe Accessories Machine Accessories Mobile Bases Safety Equipment Specialty Items Vise Accessories	Air Tools-Contractor Air Tools-Industrial Air Tools-Light Industrial Lubrication	Body Repair Kits Bottle Jacks Cable Pullers Cold Saws Hoists-Air Hoists-Electric Metalforming Mill/Drills Milling Machines	MW Bandsaws MW Drill Presses MW Finishing Equipment MW Lathes MW Precision Vises Pallet Trucks Rigging Equip. Service Jacks	Stackers Surface Grinders Tapping Trolleys-Air Trolleys-Electric Web Slings Winches-Electric	Beam Clamps Chain Hoist-Manual Lever Hoists Pullers-JCH Models Scissor Lift Tables Screw Jacks Trolleys-Geared	Trolleys-Plain Winches-Manual WW Air Filtration WW Bandsaws WW Buffers WW Drill Presses WW Dust Collectors WW Dust Filters	WW Dust Fittings WW Jointers WW Lathes WW Planers WW Sanders WW Shapers WW Tablesaws	Fastening Tools Mechanics Hand Tools Striking Tools Vises (non-precision) Clamps

WHAT IS COVERED?

This warranty covers any defects in workmanship or materials subject to the exceptions stated below. Cutting tools, abrasives and other consumables are excluded from warranty coverage.

WHO IS COVERED?

This warranty covers only the initial purchaser of the product.

WHAT IS THE PERIOD OF COVERAGE?

The general JET warranty lasts for the time period specified in the product literature of each product.

WHAT IS NOT COVERED?

Five Year Warranties do not cover woodworking (WW) products used for commercial, industrial or educational purposes. Woodworking products with Five Year Warranties that are used for commercial, industrial or education purposes revert to a One Year Warranty. This warranty does not cover defects due directly or indirectly to misuse, abuse, negligence or accidents, normal wear-and-tear, improper repair or alterations, or lack of maintenance.

HOW TO GET SERVICE

The product or part must be returned for examination, postage prepaid, to a location designated by us. For the name of the location nearest you, please call 1-800-274-6848.

You must provide proof of initial purchase date and an explanation of the complaint must accompany the merchandise. If our inspection discloses a defect, we will repair or replace the product, or refund the purchase price, at our option. We will return the repaired product or replacement at our expense unless it is determined by us that there is no defect, or that the defect resulted from causes not within the scope of our warranty in which case we will, at your direction, dispose of or return the product. In the event you choose to have the product returned, you will be responsible for the shipping and handling costs of the return.

HOW STATE LAW APPLIES

This warranty gives you specific legal rights; you may also have other rights which vary from state to state.

LIMITATIONS ON THIS WARRANTY

WMH TOOL GROUP LIMITS ALL IMPLIED WARRANTIES TO THE PERIOD OF THE LIMITED WARRANTY FOR EACH PRODUCT. EXCEPT AS STATED HEREIN, ANY IMPLIED WARRANTIES OR MERCHANTABILITY AND FITNESS ARE EXCLUDED. SOME STATES DO NOT ALLOW LIMITATIONS ON HOW LONG THE IMPLIED WARRANTY LASTS, SO THE ABOVE LIMITATION MAY NOT APPLY TO YOU.

WMH TOOL GROUP SHALL IN NO EVENT BE LIABLE FOR DEATH, INJURIES TO PERSONS OR PROPERTY, OR FOR INCIDENTAL, CONTINGENT, SPECIAL, OR CONSEQUENTIAL DAMAGES ARISING FROM THE USE OF OUR PRODUCTS. SOME STATES DO NOT ALLOW THE EXCLUSION OR LIMITATION OF INCIDENTAL OR CONSEQUENTIAL DAMAGES, SO THE ABOVE LIMITATION OR EXCLUSION MAY NOT APPLY TO YOU.

WMH Tool Group sells through distributors only. The specifications in WMH catalogs are given as general information and are not binding. Members of WMH Tool Group reserve the right to effect at any time, without prior notice, those alterations to parts, fittings, and accessory equipment which they may deem necessary for any reason whatsoever. JET® branded products are not sold in Canada by WMH Tool Group.

Warnings

1. Read and understand this entire owner's manual before attempting assembly or operation.
2. This jack is designed for lifting vehicles only.
3. The vehicle owner's manual should be consulted prior to lifting the vehicle. Lift only under areas of the vehicle specified by the vehicle manufacturer.
4. The jack must be on level and solid ground, and the wheels of the vehicle must face straight ahead.
5. Do not overload the jack. Overloading can cause damage to or failure of the jack.
6. No one should remain in a vehicle that is being lifted.
7. When lifting the vehicle, be sure to place the axle on the center of the jack saddle.
8. After lifting the vehicle, place safety stands under the axles.
9. Never get under a vehicle that is supported only by a jack.
10. Never move the jack while it is supporting the vehicle.
11. When lowering the vehicle, make sure nobody is around or under the lifted vehicle. Lower slowly.
12. Safety valve is factory adjusted and no further adjustment is required.
13. While not in use, always keep the handle straight up and secured with the control rod so that it won't fall.
14. Read and understand the warnings posted on the jack and in this manual. Failure to comply with all of these warnings may result in loss of load, damage to jack and/or personal injury or property damage.
15. Replace the warning labels if they become obscured or removed.
16. Use only factory replacement parts when part replacement is necessary.

Introduction

This manual is provided by WMH Tool Group covering the safe operation and maintenance procedures for a JET Model JASJ Service Jack. This manual contains instructions on assembly, safety precautions, general operating procedures, maintenance instructions and parts breakdown. This jack has been designed and constructed to provide years of trouble free operation if used in accordance with instructions set forth in this manual. If there are any questions or comments, please contact either your local supplier or WMH Tool Group. WMH Tool Group can also be reached at our web site: www.wmhtoolgroup.com.

Description

The JASJ Long Chassis Service Jack is for heavy-duty automotive and truck repair and maintenance. It is equipped with strong steel side plates, an extra wide swivel saddle, foot pump, air hose and locking T-bar handle. Hydraulic cylinder parts have been high-pressure tested at the factory, and parts at maximum stress points have been heat-treated. It also features a safety overload bypass system.

Specifications

Model Number	JASJ-5L	JASJ-10L
Stock Number	454450	454110
Capacity (ton)	5	10
Minimum Height (in.)	5.91	6.30
Maximum Height (in.)	22.05	22.05
Overall Length (in.)	59.25	57.09
Overall Width (in.)	14.33	19.49
Net Weight (lbs.)	214	324
Shipping Weight (lbs.)	258	368

The above specifications were current at the time this manual was published, but because of our policy of continuous improvement, WMH Tool Group reserves the right to change specifications at any time and without prior notice, without incurring obligations.

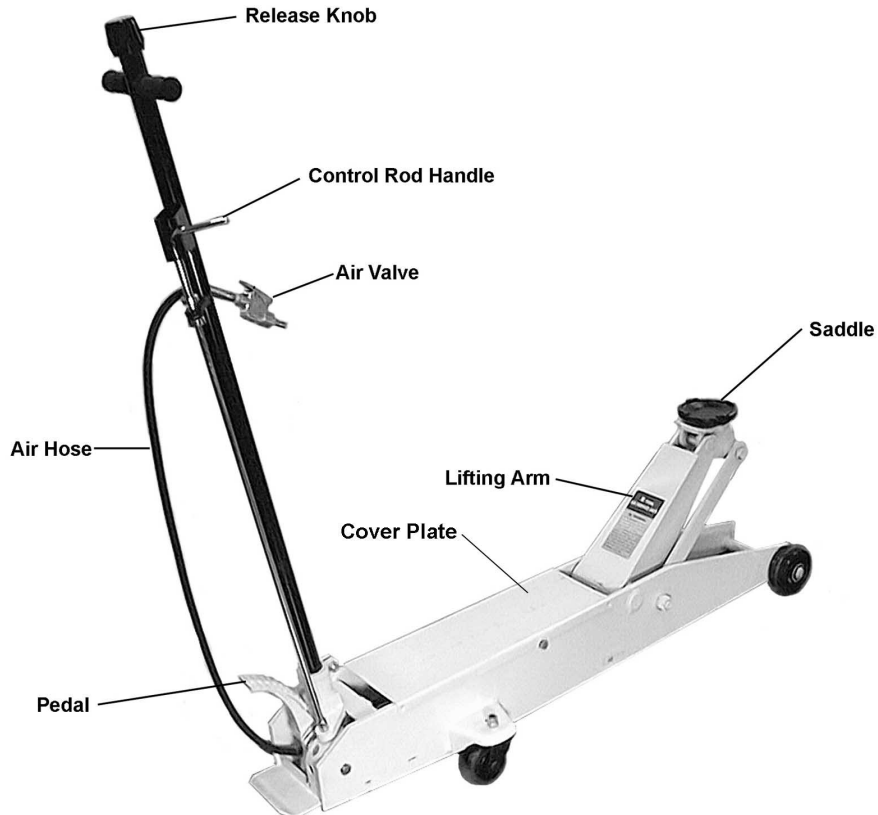


Figure 1

Unpacking

Open the crate and check for shipping damage. Report any damage immediately to your distributor and shipping agent. Do not discard any shipping material until the Service Jack is assembled and running properly.

Assembly

Refer to Figure 2.

1. Slide the Rod Joint onto the end of the Control Rod and insert a roll pin through the holes to secure.

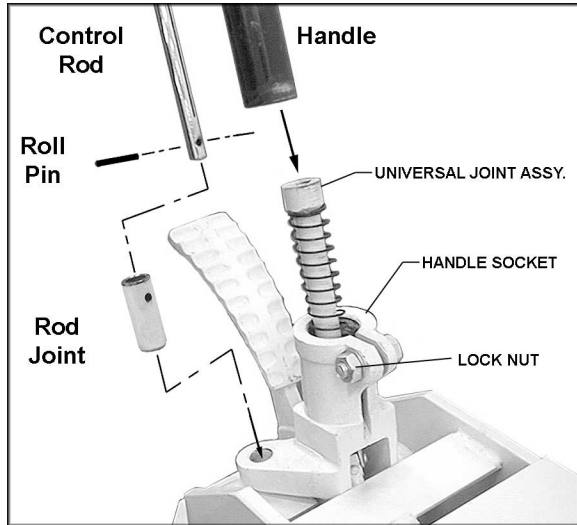


Figure 2

2. Make sure the lock nut and screw on the handle socket are loose enough for the handle to be inserted.
3. Place the handle over the universal joint assembly, and as far down as it will go into the handle socket. The Rod Joint should be inserted into the hole on the flange as shown.
4. Tighten the lock nut on the screw with a wrench.

When transporting the jack, the handle assembly can be removed and carried separately.

Before Operation

Air can accumulate within the hydraulic system during transportation or any prolonged use. This may cause the jack to respond slowly or to feel "spongy". To remove the air, follow the instructions below for both the manual pump and the air pump. Refer to Figure 1.

Manual Pump

1. Open the release valve by turning the release knob counter-clockwise.

2. Pump the pedal about six full strokes to let the air out of the hydraulic system.
3. Close the release valve by turning the release knob clockwise as far as it will go.
4. Pump the pedal to raise the jack as far up as it will go. Then lower the jack by turning the release knob counterclockwise.
5. If the jack does not immediately respond to the pump action, repeat steps 1 through 4.

Air Pump

1. Place jack on a level surface.
2. Open release valve by turning the release knob counterclockwise.
3. Connect the air valve to the air supply (85 to 142 psi), and run the air pump for 20 seconds, then close the release valve by turning the release knob clockwise.
4. Pump the pedal until the jack reaches its maximum height.
5. Open release valve by turning the release knob counterclockwise, and lower jack to its lowest position.
6. If the jack does not immediately respond to the air pump, repeat steps 1 thru 5.

Operation

⚠ WARNING Do not use a saddle extender with this jack. Failure to comply may cause damage to property and/or serious injury.

1. To *raise* the vehicle, make sure the release knob is closed – turn it clockwise until resistance is felt; do not overtighten.
2. Carefully position the jack under the vehicle with the saddle under the point of contact. The saddle can be rotated for best position. (The vehicle must have wheels pointing straight ahead and the emergency brake released.)
3. If using the handle, pull the control rod up and push it over to the left until it slides into the slot. If using the air pump, set air source pressure to 85 to 142 psi.
4. Pump the handle, or pump the pedal, or use the air pump to raise the vehicle.
5. To *lower* the vehicle, slowly and carefully rotate the release knob counter-clockwise. Speed of descent is controlled by how much the knob is rotated.

⚠ WARNING Make sure all tools and personnel are clear before lowering.

Maintenance

Inspect the jack before each use. If any of the following are identified, the jack should be taken out of operation and repaired: cracked or damaged housing, excessive wear or bending, scored or damaged ram, leaking hydraulic fluid, malfunctioning swivel heads or adjusting screws, modified or altered equipment.

Tighten any loose screws or lock nuts.

Keep the jack clean and well lubricated. The air supply should be dry and clean, and the filters on your air system changed regularly.

Lubricate the pin and other moving elements and friction points on the Lifting Arm with #2 tube grease, **monthly**. See Figure 3.

Insert grease into the grease fitting on both front wheels and the grease fitting on the lifting arm, **at least every 3 months**. See Figure 3.

Lubricate the pin and other moving parts of the Handle and Socket Assembly with #2 tube grease, **monthly**. See Figure 4.

With saddle completely lowered and handle in its lowest position, pull off the cover plate. Remove the oil plug (Figure 5) and check oil level. If low, fill with hydraulic jack oil until oil is level with the ram (inner cylinder) as seen from the opening of the filler hole.

NOTE: Completely drain and re-fill the oil tank at least once a year, as follows. With saddle completely lowered and handle in lowest position, remove the oil plug. Lay the jack on its side and drain fluid into an appropriate container. Re-fill with good quality hydraulic jack oil and replace oil plug.

⚠ WARNING Never use brake fluid, detergent motor oil, transmission oil or any other highly viscous or volatile oil. These could damage seals and result in jack failure.

Always store jack in the fully lowered position, with the handle upright and locked in position with the control rod. Store in a well protected area where the jack will not be exposed to corrosive vapors, abrasive dust or other harmful elements.

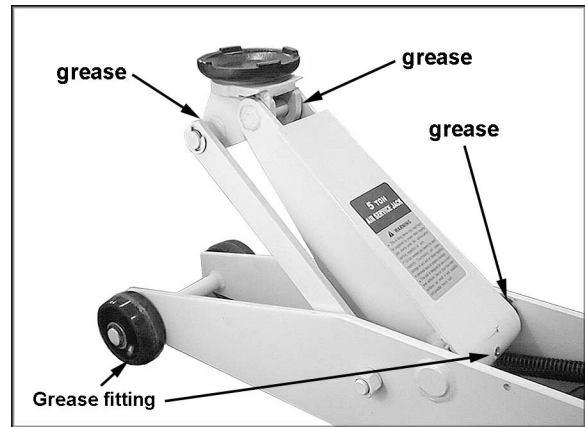


Figure 3

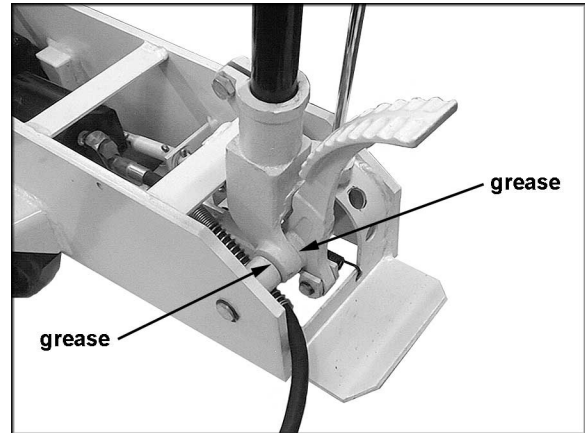


Figure 4

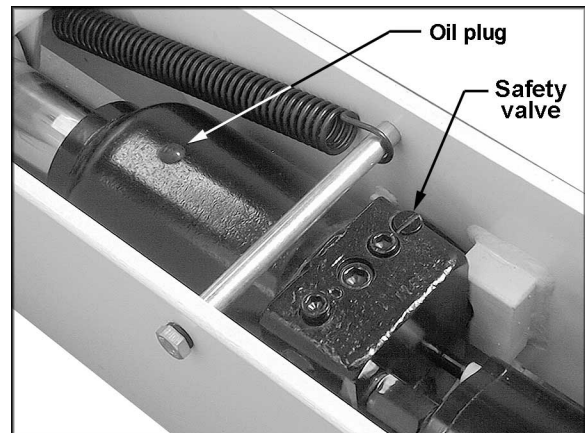


Figure 5

Troubleshooting

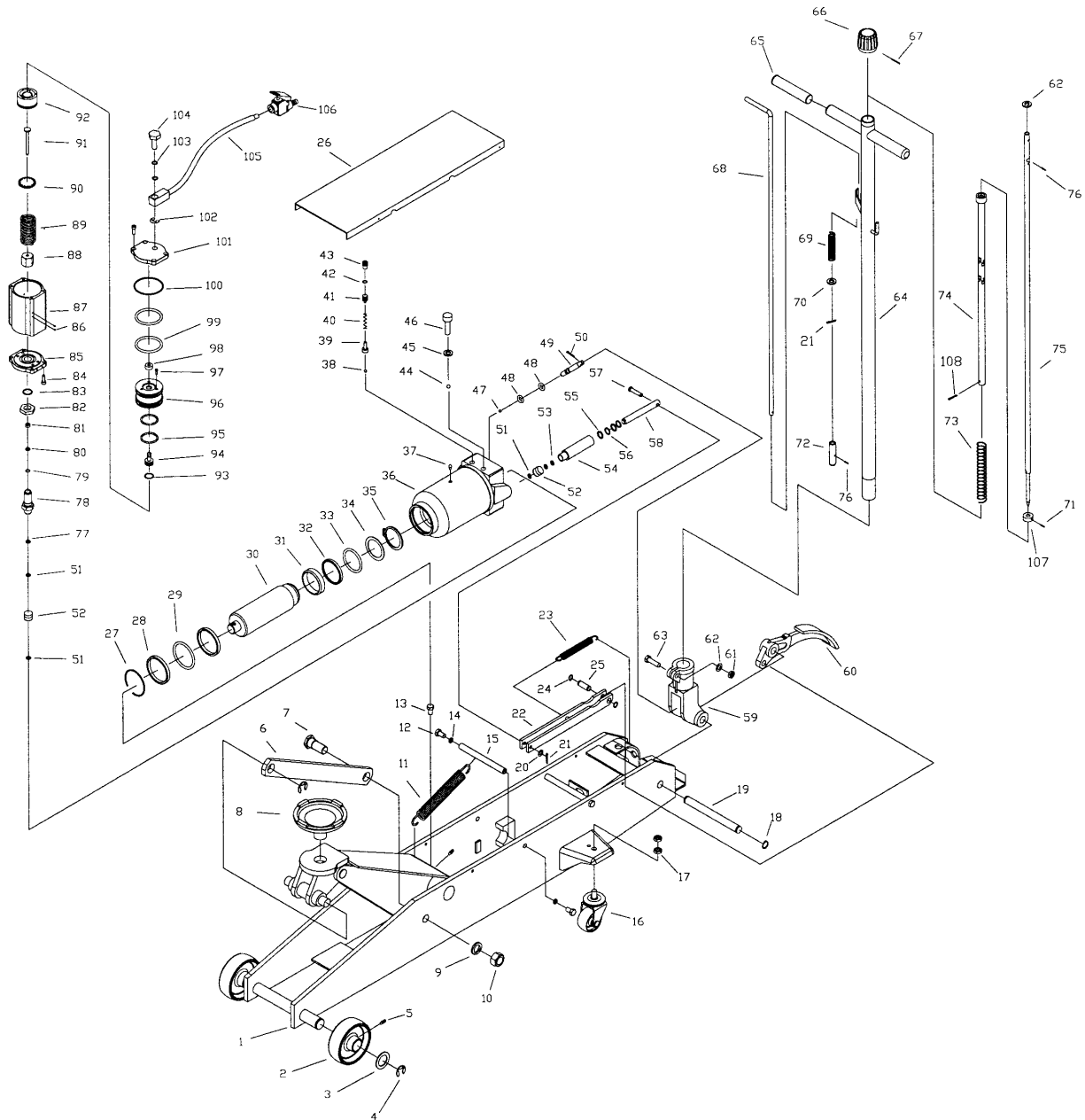
Numbers in parentheses refer to the index numbers on the parts breakdown, page 8.

Trouble	Probable Cause	Remedy
Jack will not lift.	Release valve not properly closed.	Tighten release knob.
	No oil in system, or oil level low.	Fill to prescribed level, and bleed system.
	Air trapped in system.	Bleed system.
	Jack is overloaded.	Remedy overload condition. Use jack with proper capacity for the load.
	Release Valve (47 thru 50) or Safety Valve (38 thru 43) is malfunctioning. Valve Ball not properly seated.	Clean valves to remove dirt or foreign matter and replace oil.
	Seal/gasket worn out or defective.	Replace seal/gasket.
	Leak in air line.	Locate leak; tighten connections or replace hose.
	Air pressure insufficient.	Set air pressure to 85 to 142 psi.
Jack will only lift part way.	Too much or not enough oil.	Fill to proper level, or remove excess oil.
Jack will lift load, but will not hold.	Release Valve (47 thru 50) or Safety Valve (38 thru 43) malfunctioning. Valve Ball not properly seated.	Inspect valves; clean and adjust seat surface.
	Seal/gasket worn out or defective.	Replace seal/gasket.
Jack will not lower after unloading.	Release valve (47 thru 50) is not opening.	Clean and adjust release valve.
	Reservoir is overfilled.	Drain oil to proper level.
	Linkages binding.	Clean and lubricate moving parts.
Poor lift performance.	Pump gasket is defective or valves are malfunctioning.	Replace gasket and/or clean valves.
	Oil level low, or dirty oil.	Fill or replace oil.
	Air trapped in system.	Bleed air from system.
Jack will not lower completely.	Release valve is closed.	Open release valve.
	Pump plunger (58) is bent or marred.	Replace pump plunger.
	Link section warped or deformed due to possible over-loading.	Replace warped parts.
Air motor operates erratically or not at all.	Leak in air line.	Locate leak; tighten connections or replace hose.
	Inadequate air pressure.	Set air pressure to 85 to 142 psi.
	Air piston is sticking.	Lubricate air motor by placing a small amount of machine tool oil in the jack's air valve.

Replacement Parts

To order parts or reach our service department, call 1-800-274-6848 between 7:30 a.m. and 6:00 p.m. (CST), Monday through Friday. Having the Model Number and Serial Number of your machine available when you call will allow us to serve you quickly and accurately.

JASJ-5L, JASJ-10L Service Jacks



Parts List: JASJ-5L Service Jack

Index No.	Part No.	Description	Size	Qty
1	JASJ5L-1	Frame Assembly		1
2	JASJ5L-2	Front Wheel		2
3	JASJ5L-3	Front Wheel Washer		2
4	JASJ5L-4	Snap Ring	Ø19mm	4
5	JASJ5L-5	Grease Fitting		3
6	JASJ5L-6	Rod Link		2
7	JASJ5L-7	Rod Link Bolt		2
8	JASJ5L-8	Saddle		1
9	JASJ5L-9	Lock Washer	M20	2
10	JASJ5L-10	Hex Nut	M20	2
11	JASJ5L-11	Spring		1
12	TS-1491031	Hex Cap Screw	M10x25mm	2
13	TS-2210161	Hex Cap Screw	M10x16mm	1
14	TS-2361101	Lock Washer	M10	2
15	JASJ5L-15	Shaft		1
16	JASJ5L-16	Rear Wheel Assembly		2
17	JASJ5L-17	Hex Nut	M12x1.25	4
18	JASJ5L-18	Snap Ring	Ø18mm	2
19	JASJ5L-19	Shaft		1
20	TS-1550061	Flat Washer	M8	1
21	JASJ5L-21	Split Pin	Ø3x18mm	2
22	JASJ5L-22	Link Assembly		1
23	JASJ5L-23	Spring		1
24	JASJ5L-24	Snap Ring	Ø12mm	2
25	JASJ5L-25	Pedal Pin		1
26	JASJ5L-26	Cover Plate		1
27	JASJ5L-27	Snap Ring		1
28	JASJ5L-28	Bushing		2
29	JASJ5L-29	O-Ring	61.5x5.3mm	1
30	JASJ5L-30	Ram		1
31	JASJ5L-31	Piston Ring		1
32	JASJ5L-32	Seal Washer		1
33	JASJ5L-33	O-Ring	53x5.3mm	1
34	JASJ5L-34	O-Ring Retainer		1
35	JASJ5L-35	Snap Ring	Ø48mm	1
36	JASJ5L-36	Oil Tank Assembly		1
37	JASJ5L-37	Oil Filler Plug		1
38	SB-4MM	Steel Ball	4mm	1
39	JASJ5L-39	Safety Valve Ball Seat		1
40	JASJ5L-40	Safety Valve Spring		1
41	JASJ5L-41	Safety Valve Adjusting Screw		1
42	JASJ5L-42	Seal		1
43	JASJ5L-43	Safety Valve Screw		1
44	SB-8MM	Steel Ball	8mm	1
45	JASJ5L-45	Copper Washer		1
46	TS-1505021	Socket Head Cap Screw	M10x20mm	1
47	SB-6MM	Steel Ball	6mm	1
48	JASJ5L-48	O-Ring	7.1x2.65mm	2
49	JASJ5L-49	Release Pin		1
50	JASJ5L-50	Split Pin	Ø3x20mm	1
51	JASJ5L-51	Copper Washer		4
52	JASJ5L-52	Valve Block Assembly		2
53	JASJ5L-53	Nylon Gasket	Ø22mm	3
54	JASJ5L-54	Pump Cylinder		1
55	JASJ5L-55	O-Ring	Ø14x2.65mm	2
56	JASJ5L-56	Nylon Gasket	Ø14mm	2
57	JASJ5L-57	Pump Plunger Pin		1

58	JASJ5L-58	Pump Plunger	1
59	JASJ5L-59	Handle Socket	1
60	JASJ5L-60	Pedal	1
61	JASJ5L-61	Lock Nut	M10 1
62	TS-1550071	Flat Washer	M10 2
63	JASJ5L-63	Hex Bolt	M10x35mm 1
64	JASJ5L-64	Handle	1
65	JASJ5L-65	Handle Sleeve	2
66	JASJ5L-66	Knob	1
67	JASJ5L-67	Roll Pin	Ø4x40mm 1
68	JASJ5L-68	Control Rod	1
69	JASJ5L-69	Spring	1
70	JASJ5L-70	Washer	2
71	JASJ5L-71	Set Screw	1
72	JASJ5L-72	Rod Joint	1
73	JASJ5L-73	Spring	1
74	JASJ5L-74	Universal Joint Assembly	1
75	JASJ5L-75	Convey Rod	1
76	JASJ5L-76	Roll Pin	Ø4x20mm 2
77	JASJ5L-77	Nylon Gasket	Ø22mm 1
78	JASJ5L-78	Pump Cylinder	1
79	JASJ5L-79	Y-Seal	5.18x12x5.2mm 1
80	JASJ5L-80	Nylon Gasket	5.8x12x1.25mm 1
81	JASJ5L-81	Copper Washer	1
82	JASJ5L-82	Nut	1
83	JASJ5L-83	O-Ring	18x2.65mm 1
84	JASJ5L-84	Socket Head Cap Screw	M6x20mm 8
85	JASJ5L-85	Base Cover	1
86	SB-3MM	Steel Ball	3mm 4
87	JASJ5L-87	Air Motor Housing	1
88	JASJ5L-88	Nut	1
89	JASJ5L-89	Spring	1
90	JASJ5L-90	Washer	1
91	JASJ5L-91	Air Pump Plunger	1
92	JASJ5L-92	Air Piston Base	1
93	JASJ5L-93	O-Ring	20.3x2.65mm 2
94	JASJ5L-94	Air Shuttle Valve	1
95	JASJ5L-95	O-Ring	43x3.55mm 2
96	JASJ5L-96	Air Piston	1
97	TS-1502021	Socket Head Cap Screw	M5x10mm 3
98	JASJ5L-98	Shuttle Valve Seal	1
99	JASJ5L-99	O-Ring	57x5.3mm 2
100	JASJ5L-100	O-Ring	67x2.4mm 1
101	JASJ5L-101	Top Cover	1
102	JASJ5L-102	Snap Ring	Ø14mm 1
103	JASJ5L-103	O-Ring	11.5x1.5mm 2
104	JASJ5L-104	Coupler	1
105	JASJ5L-105	Air Hose Assembly	1
106	JASJ5L-106	Air Valve Assembly	1
107	JASJ5L-107	Fixing Ring	1
108	JASJ5L-108	Split Pin	Ø3x20mm 1

Parts List: JASJ-10L Service Jack

Index No.	Part No.	Description	Size	Qty
1	JASJ10L-1	Frame Assembly		1
2	JASJ10L-2	Front Wheel		2
3	JASJ10L-3	Front Wheel Washer		2
4	JASJ10L-4	Snap Ring	Ø36mm	2
5	JASJ10L-5	Grease Fitting		3
6	JASJ10L-6	Rod Link		2
7	JASJ10L-7	Rod Link Bolt		2
8	JASJ10L-8	Saddle		1
9	JASJ10L-9	Lock Washer	M20	2
10	JASJ10L-10	Hex Nut	M20	2
11	JASJ5L-11	Spring		1
12	TS-1491031	Hex Cap Screw	M10x25mm	2
13	TS-2210161	Hex Cap Screw	M10x16mm	1
14	TS-2361101	Lock Washer	M10	2
15	JASJ10L-15	Shaft		1
16	JASJ10L-16	Rear Wheel Assembly		2
17	JASJ10L-17	Hex Nut w/Lock Washer	M16	2
18	JASJ10L-18	Snap Ring	Ø18mm	2
19	JASJ10L-19	Shaft		1
20	TS-1550061	Flat Washer	M8	1
21	JASJ5L-21	Split Pin	Ø3x18mm	2
22	JASJ10L -22	Link Assembly		1
23	JASJ10L -23	Spring		1
24	JASJ10L -24	Snap Ring	Ø12mm	2
25	JASJ10L -25	Pedal Pin		1
26	JASJ10L -26	Cover Plate		1
27	JASJ10L -27	Snap Ring		1
28	JASJ10L -28	Bushing		2
29	JASJ10L -29	O-Ring	61.5x5.3mm	1
30	JASJ10L -30	Ram		1
31	JASJ10L -31	Piston Ring		1
32	JASJ10L -32	Seal Washer		1
33	JASJ10L -33	O-Ring	53x5.3mm	1
34	JASJ10L -34	O-Ring Retainer		1
35	JASJ10L -35	Snap Ring	Ø48mm	1
36	JASJ10L -36	Oil Tank Assembly		1
37	JASJ10L -37	Oil Filler Plug		1
38	SB-4MM	Steel Ball	4mm	1
39	JASJ10L -39	Safety Valve Ball Seat		1
40	JASJ10L -40	Safety Valve Spring		1
41	JASJ10L -41	Safety Valve Adjusting Screw		1
42	JASJ10L -42	Seal		1
43	JASJ10L -43	Safety Valve Screw		1
44	SB-8MM	Steel Ball	8mm	1
45	JASJ10L -45	Copper Washer		1
46	TS-1505021	Socket Head Cap Screw	M10x20mm	1
47	SB-6MM	Steel Ball	6mm	1
48	JASJ5L -48	O-Ring	7.1x2.65mm	2
49	JASJ10L -49	Release Pin		1
50	JASJ5L-50	Split Pin	Ø3x20mm	1
51	JASJ10L -51	Copper Washer		4
52	JASJ10L -52	Valve Block Assembly		2
53	JASJ5L-53	Nylon Gasket	Ø22mm	3
54	JASJ10L -54	Pump Cylinder		1
55	JASJ10L-55	O-Ring	Ø15x2.65mm	2
56	JASJ10L-56	Nylon Gasket	Ø15mm	2
57	JASJ10L -57	Pump Plunger Pin		1

58	JASJ10L -58	Pump Plunger		1
59	JASJ10L -59	Handle Socket		1
60	JASJ10L -60	Pedal		1
61	JASJ10L-61	Lock Nut	M10	1
62	TS-1550071	Flat Washer	M10	2
63	JASJ5L-63	Hex Bolt	M10x35mm	1
64	JASJ10L -64	Handle		1
65	JASJ10L -65	Handle Sleeve		2
66	JASJ10L -66	Knob		1
67	JASJ5L -67	Roll Pin	Ø4x40mm	1
68	JASJ10L -68	Control Rod		1
69	JASJ10L -69	Spring		1
70	JASJ10L -70	Washer		2
71	JASJ10L -71	Set Screw		1
72	JASJ10L -72	Rod Joint		1
73	JASJ10L -73	Spring		1
74	JASJ10L -74	Universal Joint Assembly		1
75	JASJ10L -75	Convey Rod		1
76	JASJ10L -76	Roll Pin	Ø4x20mm	2
77	JASJ10L -77	Nylon Gasket	Ø22mm	1
78	JASJ5L-78	Pump Cylinder		1
79	JASJ5L-79	Y-Seal	5.18x12x5.2mm	1
80	JASJ5L-80	Nylon Gasket	5.8x12x1.25mm	1
81	JASJ5L-81	Copper Washer		1
82	JASJ5L-82	Nut		1
83	JASJ5L-83	O-Ring	18x2.65mm	1
84	JASJ5L-84	Socket Head Cap Screw	M6x20mm	8
85	JASJ5L-85	Base Cover		1
86	SB-3MM	Steel Ball	3mm	4
87	JASJ5L-87	Air Motor Housing		1
88	JASJ5L-88	Nut		1
89	JASJ5L-89	Spring		1
90	JASJ5L-90	Washer		1
91	JASJ5L-91	Air Pump Plunger		1
92	JASJ5L-92	Air Piston Base		1
93	JASJ5L-93	O-Ring	20.3x2.65mm	2
94	JASJ5L-94	Air Shuttle Valve		1
95	JASJ5L-95	O-Ring	43x3.55mm	2
96	JASJ5L-96	Air Piston		1
97	TS-1502021	Socket Head Cap Screw	M5x10mm	3
98	JASJ5L-98	Shuttle Valve Seal		1
99	JASJ5L-99	O-Ring	57x5.3mm	2
100	JASJ5L-100	O-Ring	67x2.4mm	1
101	JASJ5L-101	Top Cover		1
102	JASJ5L-102	Snap Ring	Ø14mm	1
103	JASJ5L-103	O-Ring	11.5x1.5mm	2
104	JASJ5L-104	Coupler		1
105	JASJ5L-105	Air Hose Assembly		1
106	JASJ5L-106	Air Valve Assembly		1
107	JASJ5L-107	Fixing Ring		1
108	JASJ5L-108	Split Pin	Ø3x20mm	1



TEST CERTIFICATE

COMMODITY	Long Chassis Service Jack
MODEL	JASJ-5L
SERIAL NO.	
CAPACITY	5 Ton
TEST LOAD	Ton
DATE OF INSPECTION	
JUDGEMENT	PASSED
INSPECTOR	

WMH Tool Group
2420 Vantage Drive
Elgin, Illinois 60123
Phone: 800-274-6848
www.wmhtoolgroup.com



TEST CERTIFICATE

COMMODITY	Long Chassis Service Jack
MODEL	JASJ-10L
SERIAL NO.	
CAPACITY	10 Ton
TEST LOAD	Ton
DATE OF INSPECTION	
JUDGEMENT	PASSED
INSPECTOR	

WMH Tool Group
2420 Vantage Drive
Elgin, Illinois 60123
Phone: 800-274-6848
www.wmhtoolgroup.com



WMH Tool Group
2420 Vantage Drive
Elgin, Illinois 60123
Phone: 800-274-6848
www.wmhtoolgroup.com