



# Operating Instructions and Parts Manual

## HLPT Series High Lift Pallet Trucks

Models: HLPT-2045, HLPT-2745



### WMH TOOL GROUP

2420 Vantage Drive  
Elgin, Illinois 60123  
Ph.: 800-274-6848  
[www.wmhtoolgroup.com](http://www.wmhtoolgroup.com)

**Part No. M-140087**

Revision C 1/05

Copyright © WMH Tool Group

This manual has been prepared for the owner and operators of a JET HLPT series High Lift Pallet Truck. Its purpose, aside from high lift pallet truck operation, is to promote safety through the use of accepted correct operating and maintenance procedures. Completely read the safety and maintenance instructions before operating or servicing the high lift pallet truck. To obtain maximum life and efficiency from your high lift pallet truck, and to aid in using the truck safely, read this manual thoroughly and follow instructions carefully.

## **Warranty & Service**

WMH Tool Group warrants every product it sells. If one of our tools needs service or repair, one of our Authorized Repair Stations located throughout the United States can give you quick service.

In most cases, any one of these WMH Tool Group Repair Stations can authorize warranty repair, assist you in obtaining parts, or perform routine maintenance and major repair on your JET, Performax, Powermatic or Wilton tools.

For the name of an Authorized Repair Station in your area, call 1-800-274-6848.

## **More Information**

WMH Tool Group is consistently adding new products to the line. For complete, up-to-date product information, check with your local WMH Tool Group distributor or visit [wmhtoolgroup.com](http://wmhtoolgroup.com).

## **Limited Warranty**

WMH Tool Group (including JET, Performax, Powermatic and Wilton brands) makes every effort to assure that its products meet high quality and durability standards and warrants to the original retail consumer/purchaser of our products that each product be free from defects in materials and workmanship as follows: 1 YEAR LIMITED WARRANTY ON ALL PRODUCTS UNLESS SPECIFIED OTHERWISE. This warranty does not apply to defects due directly or indirectly to misuse, abuse, negligence or accidents, normal wear-and-tear, repair or alterations outside our facilities, or to a lack of maintenance.

WMH TOOL GROUP LIMITS ALL IMPLIED WARRANTIES TO THE PERIOD SPECIFIED ABOVE, FROM THE DATE THE PRODUCT WAS PURCHASED AT RETAIL. EXCEPT AS STATED HEREIN, ANY IMPLIED WARRANTIES OR MERCHANTABILITY AND FITNESS ARE EXCLUDED. SOME STATES DO NOT ALLOW LIMITATIONS ON HOW LONG THE IMPLIED WARRANTY LASTS, SO THE ABOVE LIMITATION MAY NOT APPLY TO YOU. WMH TOOL GROUP SHALL IN NO EVENT BE LIABLE FOR DEATH, INJURIES TO PERSONS OR PROPERTY, OR FOR INCIDENTAL, CONTINGENT, SPECIAL, OR CONSEQUENTIAL DAMAGES ARISING FROM THE USE OF OUR PRODUCTS. SOME STATES DO NOT ALLOW THE EXCLUSION OR LIMITATION OF INCIDENTAL OR CONSEQUENTIAL DAMAGES, SO THE ABOVE LIMITATION OR EXCLUSION MAY NOT APPLY TO YOU.

To take advantage of this warranty, the product or part must be returned for examination, postage prepaid, to an Authorized Repair Station designated by our office. Proof of purchase date and an explanation of the complaint must accompany the merchandise. If our inspection discloses a defect, WMH Tool Group will either repair or replace the product, or refund the purchase price if we cannot readily and quickly provide a repair or replacement, if you are willing to accept a refund. WMH Tool Group will return repaired product or replacement at our expense, but if it is determined there is no defect, or that the defect resulted from causes not within the scope of our warranty, then the user must bear the cost of storing and returning the product. This warranty gives you specific legal rights; you may also have other rights, which vary from state to state.

WMH Tool Group sells through distributors only. WMH Tool Group reserves the right to effect at any time, without prior notice, those alterations to parts, fittings, and accessory equipment which they may deem necessary for any reason whatsoever.

## Table of Contents

## Page

Warranty .....	2
Specifications .....	3
Introduction.....	3
Assembly and Adjustment .....	4
Safety Precautions .....	4
Operation .....	4
Maintenance.....	5
Trouble-Shooting .....	5
Parts Lists and Breakdowns.....	6-11

## Specifications

## High Lift Pallet Truck

Model Number .....	<b>HLPT-2045</b>	<b>HLPT-2745</b>
Stock Number.....	140087	140088
Capacity (lbs) .....	2,200	2,200
Min./Max. Fork Height (in) .....	3-3/8 / 32	3-3/8 / 32
Fork Width (in).....	6-1/4	6-1/4
Overall Fork Dimensions L x W (in) .....	20-1/2 x 45	27 x 45
Load Wheel OD x W (in) .....	3 x 2 Nylon	3 x 2 Nylon
Steer Wheel OD x W (in).....	6 x 2 Poly/Steel	6 x 2 Poly/Steel
Overall Dimensions L x W x H (in).....	63 x 20-7/8 x 50	63 x 27-3/16 x 50
Net Weight (lbs).....	208	238

## Introduction

Congratulations on your purchase of a JET High Lift Pallet Truck.

This high lift pallet truck is designed to reduce lifting injuries and increase productivity by easily lifting, lowering, and transporting heavy loads up to 2,200 pounds on open pallets and skids only. It does not operate with closed pallets unless the pallet is placed on top of forks.

The welded steel frame features a powder coat finish to inhibit rust. A powerful two-stage hydraulic pump features quick lifting action with no load, and automatic overload bypass protection. The pump may be operated with a pallet truck style handle or foot lever. An automatic floor brake engages when the forks are raised. An optional steel platform converts the high lift pallet truck to a convenient mobile workstation. With regular maintenance, your high lift pallet truck will provide years of dependable service.

The specifications in this manual are given as general information and are not binding. WMH Tool Group reserves the right to effect, at any time and without prior notice, changes or alterations to parts, fittings, and accessory equipment deemed necessary for any reason whatsoever.

## Assembly & Adjustment

(refer to parts breakdown, pages 6-11)

**Note:** Individual pallet trucks are assembled and ready to use. Pallet trucks purchased in crate quantities require some assembly. Match the "number" label on the handle to the "number" label on the frame, prior to assembly.

1. Insert handle (22) over square steel tabs on pump assembly (30), and align the holes.
2. Fasten handle to pump assembly with two handle pins (28), two bushings (29) and two spring pins (27). Move handle up and down several times to confirm that it moves freely.
3. Hook the release rod (50) into the cam (72). Set the lever on the handle to neutral, and turn the cam nut (47) while pumping the handle. When lifting stops, give the cam nut one more turn. The cam nut is properly adjusted when pumping the handle in the neutral position causes no movement of the hydraulic ram.
4. Press foot lever (45) or pump handle (22) repeatedly to lift the forks to the highest position. Then pull and hold pump release lever (25) on pump handle while pumping handle up and down to lower the forks to their lowest position. Repeat this procedure 3 to 4 complete cycles to release any possible trapped air in the hydraulic system and to confirm all components are functioning properly.
5. The pallet truck has a "closed" oil plug (89A) installed in the pump body. This plug was for shipping purposes only. It should be removed and replaced with the provided oil plug that has a *hole* in the top. This will allow the correct atmospheric pressure to be maintained in the hydraulic system.
4. Never allow anyone to ride on the pallet truck.
5. Operate on smooth, level, finished floors only; do not use on sloping floors.
6. Always keep hands and feet clear from all moving parts including forks, legs, wheels, piston rod (96) and mid-cylinder (90).
7. Always secure load equally on the forks nearest the bulkhead before lifting or lowering. Do not lift load with fork tip only.
8. Automatic overload safety valve will open if pallet truck is overloaded.
9. When transporting load, always keep people clear from pallet truck and transport load in the lowered position only.
10. Pull pump release lever slowly to allow load to descend in a controlled manner.



### WARNING

**Failure to comply with all of these safety precautions may result in loss of load, damage to pallet truck, personal injury and/or property damage.**

## Operation

The pallet truck is designed for use with open style pallets or skids only. Closed style pallets must be placed on top of forks prior to use.

The handle is designed to pull and steer the pallet truck only. Do not use the handle as a leverage tool.



### WARNING

**Do not attempt to move pallet truck with forks in raised position. Lower forks before moving pallet truck with load.**

## Safety Precautions

1. Read owner's manual before operating high lift pallet truck.
2. Do not exceed rated capacity.
3. Before using pallet truck, lift and lower the forks several times with no load to release any air that may be trapped in the hydraulic system.
1. To raise forks, pump foot pedal or handle up and down until desired height is reached.  
**NOTE:** The hydraulic pump assembly features a safety overload bypass system. If pallet truck load exceeds rated capacity, only the mid-cylinder (90) will extend; the piston rod (96) will not.
2. To lower the forks, pull the pump release lever on the handle slowly to allow load to descend in a cautious and controlled manner.

CAUTION: When not in use, do not allow heavy loads to remain on the forks for an extended period of time. Always lower forks completely when not in use.

## MAINTENANCE

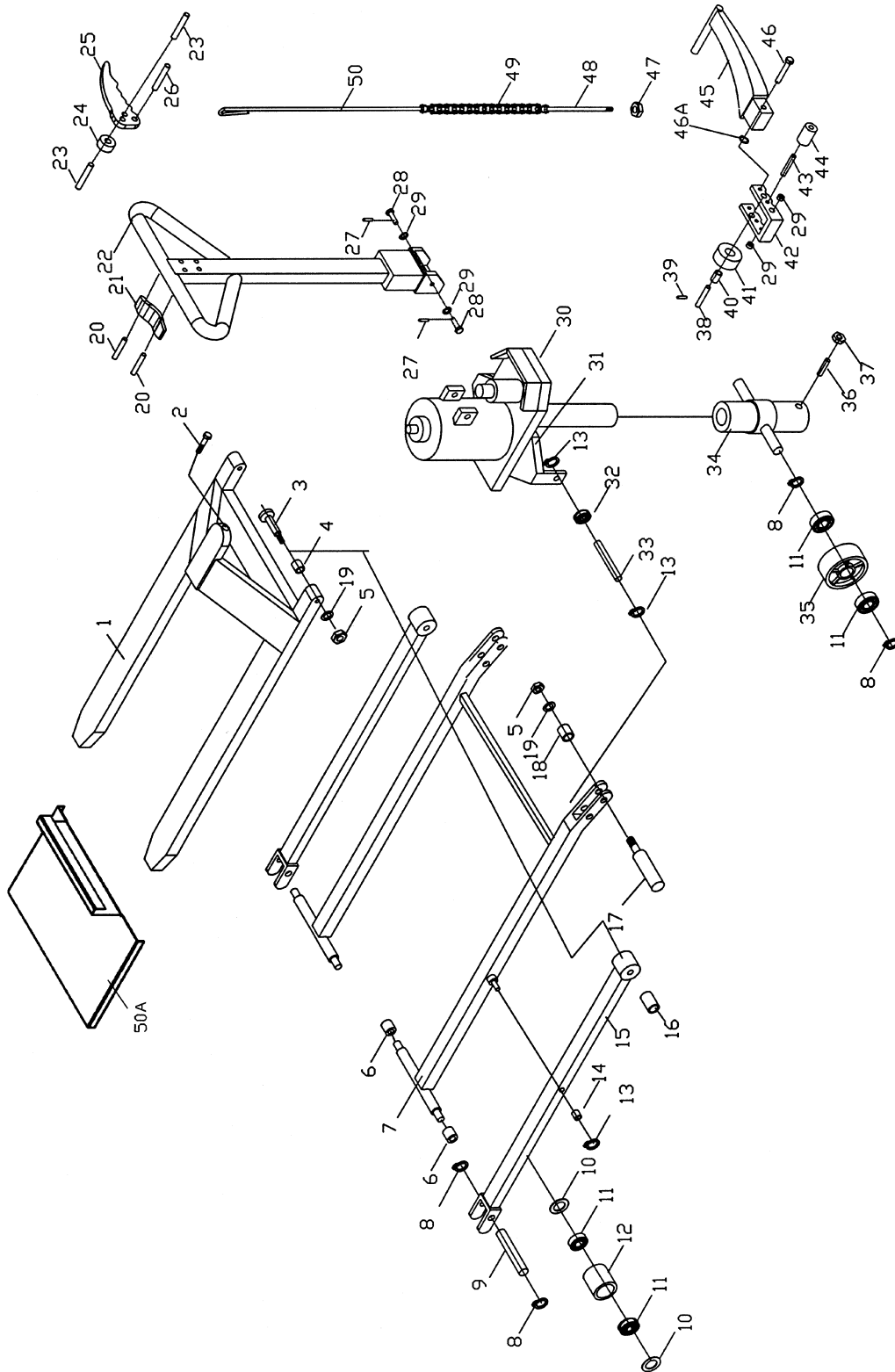
For optimum performance, lubricate chain (49) with light oil periodically.

### Trouble-Shooting for HLPT Series Pallet Trucks

<b>Trouble</b>	<b>Possible Cause</b>	<b>Remedy</b> (with parts list reference number)
<b>Forks do not lift to maximum height.</b>	1. Hydraulic oil level low.	1. Lower forks fully and add hydraulic oil to fill hole (89A) up to bottom level. [About 0.92 liters]
<b>Forks will not lift.</b>	1. Oil level is low, or oil is too viscous. 2. Oil has impurities. 3. Hex nut (47) is too high on anchor bolt (48) and release valve not closing. 4. Air trapped in hydraulic system.	1. Fill with oil, or change oil. 2. Change oil. 3. Adjust hex nut on anchor bolt to allow release valve to close properly. 4. Release air from system by pulling handle lever (25), then pumping handle up and down several times.
<b>Forks will not lower.</b>	1. Lifting piston (90) is deformed from overloading. 2. The fork was kept in high position for extended time resulting in rusting and jammed of the exposed piston rod. 3. Hex nut (47) not adjusted properly on anchor bolt (48). 4. Fork frame (1) and fork roller (6) are jammed.	1. Replace lifting piston. 2. Always keep forks in lowest position when not in use. Keep ram and lifting piston lubricated and away from moisture. 3. Adjust hex nut to allow release valve to close properly. 4. Correct jam; replace fork roller if necessary.
<b>Hydraulic fluid leak.</b>	1. Seal parts worn or damaged. 2. Some parts cracked or worn.	1. Replace worn or damaged parts. 2. Replace damaged or cracked parts.
<b>Forks descend without pulling release valve handle.</b>	1. Release valve unable to close properly due to impurities in hydraulic oil. 2. Hydraulic system cracked or bored. 3. Air trapped in hydraulic pump.  4. Seal parts worn or damaged in hydraulic pump. 5. Hex nut (47) is not in correct position on anchor bolt (48).	1. Replace with new hydraulic oil.  2. Inspect and replace damaged parts. 3. Release air from pump by pulling handle lever (25), then pumping handle up and down several times. 4. Replace worn or damaged parts 5. Adjust hex nut to allow release valve to close properly.

## Parts Breakdown

### HLPT-2045 & HLPT-2745 Fork Assembly



## Parts List

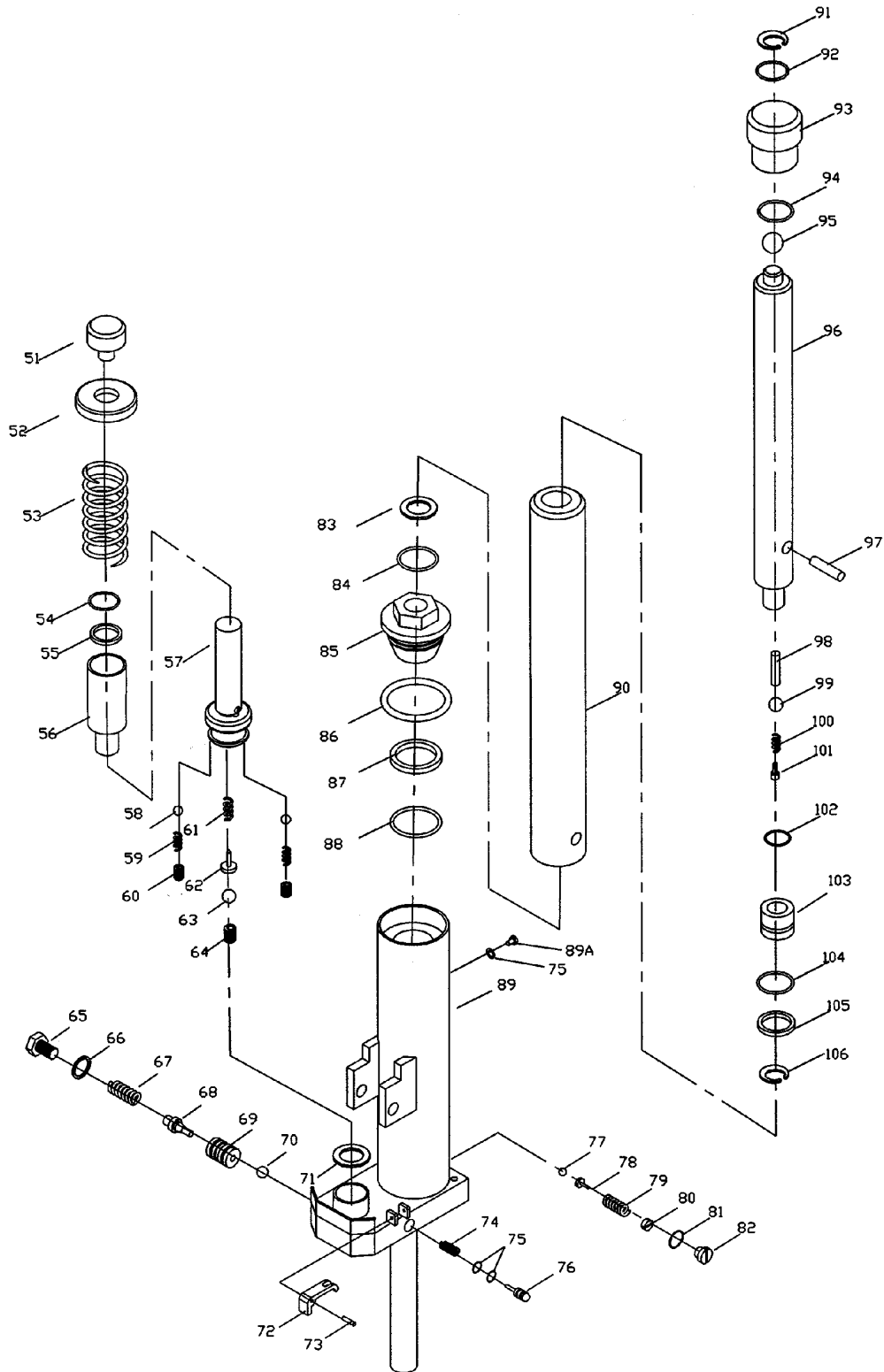
### HLPT-2045 & HLPT-2745 Fork Assembly

Index No.	Part No.	Description	Size	Quantity
1.....	HLPT-1 .....	Frame (HLPT-2045).....		1
.....	HLPT-1A .....	Frame (HLPT-2745).....		1
2.....	TS-1504011 .....	Socket Head Cap Screw .....	M8 x 10.....	1
3.....	HLPT-3 .....	Pin.....		2
4.....	HLPT-4 .....	Bushing .....		2
5.....	TS-154010 .....	Hex Nut .....	M16.....	4
6.....	HLPT-6 .....	Fork Roller.....		4
7.....	HLPT-7 .....	Inside Leg (HLPT-2045).....		1
.....	HLPT-7A .....	Inside Leg (HLPT-2745).....		1
8.....	EHPT-10.....	Snap Ring.....	M20.....	8
9.....	HLPT-9 .....	Front Wheel Axle.....		2
10.....	HLPT-10 .....	Spacer.....		4
11.....	BB-6204ZZ .....	Ball Bearing.....	6204-ZZ .....	8
12.....	HLPT-12 .....	Front Wheel.....	72 x 20 x 50 .....	2
13.....	EHPT-12.....	Snap Ring.....	M22.....	2
14.....	HLPT-14 .....	Bushing .....	25 x 22 x 40 .....	2
15.....	HLPT-15 .....	Outside Leg .....		2
16.....	HLPT-16 .....	Bushing .....	25 x 22 x25 .....	2
17.....	HLPT-17 .....	Centrifugal Axle.....		2
18.....	HLPT-18 .....	Spacer.....		2
19.....	TS-155110 .....	Lock Washer .....	M16.....	4
20.....	AH25C-060 .....	Spring Pin.....	Ø 4 x 30 .....	2
21.....	HLPT-21 .....	Blocking Spring .....		1
22.....	HLPT-22 .....	Handle.....		1
23.....	HLPT-23 .....	Spring Pin.....	Ø 4 x 22 .....	2
24.....	HLPT-24 .....	Roller.....		1
25.....	HLPT-25 .....	Handle Lever .....		1
26.....	HLPT-26 .....	Spring Pin.....	Ø 6 x 30 .....	1
.....	HLPT-107 .....	Foot Lever Assembly (includes #27 thru 29, and 38 thru 46A) ..		1
27.....	HLPT-27 .....	Spring Pin.....	Ø 5 x 55 .....	2
28.....	HLPT-28 .....	Handle Pin.....		2
29.....	HLPT-29 .....	Bushing .....	17 x 15 x 8.....	4
30.....	HLPT-30 .....	Pump Assembly.....		1
31.....	HLPT-31 .....	Table (HLPT-2045).....		1
.....	HLPT-31A.....	Table (HLPT-2745).....		1
32.....	HLPT-32 .....	Bushing .....	25 x 22 x 20 .....	2
33.....	HLPT-33 .....	Table Pin .....		2
34.....	HLPT-34 .....	Wheel Holder Base.....		1
35.....	HLPT-35 .....	Wheel.....	150 x 20 x 44 .....	2
36.....	HLPT-36 .....	Slotted Set Screw w/Cone Point .....	M8 x 16.....	1
37.....	TS-1541031 .....	Nylon Lock Hex Nut.....	M8 .....	1
38.....	HLPT-38 .....	Roller Pin.....		1
39.....	992313.....	Spring Pin.....	Ø 3 x 30 .....	1
40.....	HLPT-40 .....	Bushing .....	17 x 15 x 15 .....	1
41.....	HLPT-41 .....	Roller.....		1
42.....	HLPT-42 .....	Foot Lever Bracket .....		1
43.....	HLPT-43 .....	Positioning Roller Axle.....		2
44.....	HLPT-44 .....	Positioning Roller.....		1
45.....	HLPT-45 .....	Foot Lever .....		1
46.....	HLPT-46 .....	Link Pin .....	Ø 8 x 35 .....	1

<b>Index No.</b>	<b>Part No.</b>	<b>Description</b>	<b>Size</b>	<b>Quantity</b>
46A.....	EHPT-111 .....	Snap Ring.....	M8 .....	1
47 .....	TS-1541021 .....	Nylon Lock Hex Nut.....	M6 .....	1
48 .....	HLPT-48 .....	Anchor Bolt.....		1
49 .....	HLPT-49 .....	Chain.....	.05B-1 x 15 .....	1
50 .....	HLPT-50 .....	Release Rod.....		1
50A.....	140095.....	Optional Steel Platform .....		1
.....	PT2748J-JET .....	JET Logo Label .....		1
.....	EHPT-HL .....	Hazard Label for Legs.....	17" x 1-3/4" .....	4
.....	HLPT-ID.....	I.D. Label (HLPT-2045).....		1
.....	HLPT-IDA .....	I.D. Label (HLPT-2745).....		1
.....	EHPT-LWL .....	Loading Warning Label.....	4-3/8" x 1-9/16" .....	1



# **Parts Breakdown** **HLPT-2045 & HLPT-2745 Pump Assembly**



## Parts List

### HLPT-2045 & HLPT-2745 Pump Assembly

Index No.	Part No.	Description	Size	Quantity
51.....	HLPT-51 .....	Bolt.....		1
52.....	HLPT-52 .....	Spring Cap .....		1
53.....	HLPT-53 .....	Spring.....		1
54.....	HLPT-54 .....	Dust Seal * .....	20 x 28 x 4.5 .....	1
55.....	HLPT-55 .....	Gasket * .....	20 x 28 x 6.....	1
56.....	HLPT-56 .....	Pump Cylinder.....		1
57.....	HLPT-57 .....	Plunger Piston .....		1
58.....	SB-3MM.....	Steel Ball .....	3mm .....	2
59.....	HLPT-59 .....	Spring.....		2
60.....	HLPT-60 .....	Screw .....		2
61.....	HLPT-61 .....	Spring.....		1
62.....	HLPT-62 .....	Spring Base.....		1
63.....	SB-5MM.....	Steel Ball .....	5mm .....	1
64.....	HLPT-64 .....	Screw .....		1
65.....	HLPT-65 .....	Release Plug .....		1
66.....	HLPT-66 .....	Copper Washer * .....		1
67.....	HLPT-67 .....	Spring.....		1
68.....	HLPT-68 .....	Control Valve.....		1
69.....	HLPT-69 .....	Valve Base .....		1
70.....	SB-7MM.....	Steel Ball .....	7mm .....	1
71.....	HLPT-71 .....	Copper Washer * .....		1
72.....	HLPT-72 .....	Cam .....		1
73.....	HLPT-73 .....	Spring Pin.....	Ø 8 x 28 .....	1
74.....	HLPT-74 .....	Spring.....		1
75.....	HLPT-75 .....	O-Ring * .....	4.8 x 1.9.....	3
76.....	HLPT-76 .....	Nozzle .....		1
77.....	SB-6MM.....	Steel Ball .....	6mm .....	1
78.....	HLPT-78 .....	Spring Base.....		1
79.....	HLPT-79 .....	Spring.....		1
80.....	HLPT-80 .....	Adjusting Screw.....		1
81.....	HLPT-81 .....	O-Ring * .....	11.2 x 2.4.....	1
82.....	HLPT-82 .....	Relief Plug.....		1
83.....	HLPT-83 .....	Dust Seal * .....	45 x 53 x 5.....	1
84.....	HLPT-84 .....	O-Ring * .....	44.7 x 3.5.....	1
85.....	HLPT-85 .....	Cover .....		1
86.....	HLPT-86 .....	O-Ring * .....	77.5 x 3.55.....	1
87.....	HLPT-87 .....	Gasket * .....	45 x 55 x 6.....	1
88.....	HLPT-88 .....	O-Ring * .....	53 x 2.65.....	1
89.....	HLPT-89 .....	Pump Body.....		1
89A.....	HLPT-89A.....	Oil Fill Screw .....	M5 x 8.....	1
90.....	HLPT-90 .....	Lifting Piston.....		1
91.....	EHPT-163.....	Snap Ring.....	M25.....	1
92.....	HLPT-92 .....	O-Ring * .....	24.7 x 3.5.....	1
93.....	HLPT-93 .....	Bronze Bushing .....		1
94.....	HLPT-94 .....	O-Ring * .....	28 x 1.8.....	1
95.....	SB-18MM.....	Steel Ball .....	18mm .....	1
96.....	HLPT-96 .....	Ram Piston.....		1
97.....	HLPT-97 .....	Overflow Pin.....		1

<b>Index No.</b>	<b>Part No.</b>	<b>Description</b>	<b>Size</b>	<b>Quantity</b>
98 .....	HLPT-98 .....	Pin.....		1
99 .....	SB-6MM.....	Steel Ball .....	6mm .....	1
100 .....	HLPT-100 .....	Spring.....		1
101 .....	HLPT-101 .....	Screw .....		1
102 .....	HLPT-102 .....	O-Ring * .....	11.8 x 1.8.....	1
103 .....	HLPT-103 .....	Piston Bushing.....		1
104 .....	HLPT-104 .....	O-Ring * .....	21.2 x 3.55.....	1
105 .....	HLPT-105 .....	Gasket * .....	20 x 28 x 6.....	1
106 .....	HLPT-106 .....	Snap Ring.....	M15.....	1
.....	HLPT-RK .....	Pump Repair Kit (includes items marked with *).....		1



## TEST CERTIFICATE

COMMODITY	High Lift Pallet Truck
MODEL	HLPT series
SERIAL NO.	
CAPACITY	2,200 lbs
TEST LOAD	lbs
DATE OF INSPECTION	
JUDGEMENT	<b>PASSED</b>
INSPECTOR	

**WMH Tool Group**  
2420 Vantage Drive  
Elgin, Illinois 60123  
Phone: 800-274-6848  
[www.wmhtoolgroup.com](http://www.wmhtoolgroup.com)