



Operating Instructions and Parts Manual High Lift Pallet Truck

Model HLPT-2745



WMH TOOL GROUP

2420 Vantage Drive
Elgin, Illinois 60124
Ph.: 800-274-6848
www.wmhtoolgroup.com

Part No. M-140088

Revision A 9/06

Copyright © WMH Tool Group

WARRANTY AND SERVICE

WMH Tool Group, Inc., warrants every product it sells. If one of our tools needs service or repair, one of our Authorized Service Centers located throughout the United States can give you quick service. In most cases, any of these WMH Tool Group Authorized Service Centers can authorize warranty repair, assist you in obtaining parts, or perform routine maintenance and major repair on your JET® tools. For the name of an Authorized Service Center in your area call 1-800-274-6848.

MORE INFORMATION

WMH Tool Group is consistently adding new products to the line. For complete, up-to-date product information, check with your local WMH Tool Group distributor, or visit jettools.com.

WARRANTY

JET products carry a limited warranty which varies in duration based upon the product (MW = Metalworking, WW = Woodworking).

<div>90</div> <div>DAY</div> <div>WARRANTY</div>	<div>1</div> <div>YEAR</div> <div>WARRANTY</div>	<div>2</div> <div>YEAR</div> <div>WARRANTY</div>	<div>5</div> <div>YEAR</div> <div>WARRANTY</div>	<div>Warranty reverts to 1 Year Warranty if woodworking (WW) products listed below are used for commercial, industrial or educational purposes</div>	<div>LIFE</div> <div>LIFETIME</div> <div>WARRANTY</div>			
Lathe Accessories Machine Accessories Mobile Bases Safety Equipment Specialty Items Vise Accessories	Air Tools- Contractor Air Tools-Industrial Air Tools-Light Industrial Lubrication	Body Repair Kits Bottle Jacks Cable Pullers Cold Saws Hoists-Air Hoists-Electric Metalforming Mill/Drills Milling Machines	MW Bandsaws MW Drill Presses MW Finishing Equipment MW Lathes MW Precision Vises Pallet Trucks Rigging Equip. Service Jacks	Stackers Surface Grinders Tapping Trolleys-Air Trolleys-Electric Web Slings Winches-Electric	Beam Clamps Chain Hoist- Manual Lever Hoists Pullers-JCH Models Scissor Lift Tables Screw Jacks Trolleys-Geared	Trolleys-Plain Winches-Manual WW Air Filtration WW Bandsaws WW Buffers WW Drill Presses WW Dust Collectors WW Dust Filters	WW Dust Fittings WW Jointers WW Lathes WW Planers WW Sanders WW Shapers WW Tablesaws	Fastening Tools Mechanics Hand Tools Striking Tools Vises (non-precision) Clamps

WHAT IS COVERED?

This warranty covers any defects in workmanship or materials subject to the exceptions stated below. Cutting tools, abrasives and other consumables are excluded from warranty coverage.

WHO IS COVERED?

This warranty covers only the initial purchaser of the product.

WHAT IS THE PERIOD OF COVERAGE?

The general JET warranty lasts for the time period specified in the product literature of each product.

WHAT IS NOT COVERED?

Five Year Warranties do not cover woodworking (WW) products used for commercial, industrial or educational purposes. Woodworking products with Five Year Warranties that are used for commercial, industrial or education purposes revert to a One Year Warranty. This warranty does not cover defects due directly or indirectly to misuse, abuse, negligence or accidents, normal wear-and-tear, improper repair or alterations, or lack of maintenance.

HOW TO GET SERVICE

The product or part must be returned for examination, postage prepaid, to a location designated by us. For the name of the location nearest you, please call 1-800-274-6848.

You must provide proof of initial purchase date and an explanation of the complaint must accompany the merchandise. If our inspection discloses a defect, we will repair or replace the product, or refund the purchase price, at our option. We will return the repaired product or replacement at our expense unless it is determined by us that there is no defect, or that the defect resulted from causes not within the scope of our warranty in which case we will, at your direction, dispose of or return the product. In the event you choose to have the product returned, you will be responsible for the shipping and handling costs of the return.

HOW STATE LAW APPLIES

This warranty gives you specific legal rights; you may also have other rights which vary from state to state.

LIMITATIONS ON THIS WARRANTY

WMH TOOL GROUP LIMITS ALL IMPLIED WARRANTIES TO THE PERIOD OF THE LIMITED WARRANTY FOR EACH PRODUCT. EXCEPT AS STATED HEREIN, ANY IMPLIED WARRANTIES OR MERCHANTABILITY AND FITNESS ARE EXCLUDED. SOME STATES DO NOT ALLOW LIMITATIONS ON HOW LONG THE IMPLIED WARRANTY LASTS, SO THE ABOVE LIMITATION MAY NOT APPLY TO YOU.

WMH TOOL GROUP SHALL IN NO EVENT BE LIABLE FOR DEATH, INJURIES TO PERSONS OR PROPERTY, OR FOR INCIDENTAL, CONTINGENT, SPECIAL, OR CONSEQUENTIAL DAMAGES ARISING FROM THE USE OF OUR PRODUCTS. SOME STATES DO NOT ALLOW THE EXCLUSION OR LIMITATION OF INCIDENTAL OR CONSEQUENTIAL DAMAGES, SO THE ABOVE LIMITATION OR EXCLUSION MAY NOT APPLY TO YOU.

WMH Tool Group sells through distributors only. The specifications in WMH catalogs are given as general information and are not binding. Members of WMH Tool Group reserve the right to effect at any time, without prior notice, those alterations to parts, fittings, and accessory equipment which they may deem necessary for any reason whatsoever. JET® branded products are not sold in Canada by WMH Tool Group.

Table of Contents

Table of Contents	3
Warning	3
Introduction.....	4
Description	4
Specifications	4
Operation.....	5
Maintenance.....	5
Replacement Parts.....	6
Frame Assembly.....	7
Parts List: Frame Assembly	8
Pump Assembly.....	9
Parts List: Pump Assembly	10



Warnings

- Read and understand the entire owner's manual before attempting assembly or operation.
- Read and understand the warnings posted on the machine and in this manual. Failure to comply with all of these warnings may cause serious injury.
- Do not exceed rated capacity.
- Before using pallet truck, lift and lower the forks several times with no load to release any air that may be trapped in the hydraulic system.
- Never allow anyone to ride on the pallet truck.
- Operate on smooth, level, finished floors only; do not use on sloping floors.
- Always keep hands and feet clear from all moving parts including forks, legs, wheels, piston rod (306) and cylinder (308).
- Always secure load equally on the forks nearest the bulkhead before lifting or lowering. Do not lift load with fork tip only.
- Automatic overload safety valve will open if pallet truck is overloaded.
- When transporting load, always keep people clear from pallet truck and transport load in the lowered position only.
- Pull pump release lever slowly to allow load to descend in a controlled manner.
- Failure to comply with all of these safety precautions may result in loss of load, damage to pallet truck, personal injury and/or property damage.

Familiarize yourself with the following safety notices used in this manual:



This means that if precautions are not heeded, it may result in minor injury and/or possible machine damage.



This means that if precautions are not heeded, it may result in serious injury or possibly even death.

Introduction

This manual is provided by WMH Tool Group covering the safe operation and maintenance procedures for a JET Model HLPT-2745 Pallet Truck. This manual contains instructions on installation, safety precautions, general operating procedures, maintenance instructions and parts breakdown. This machine has been designed and constructed to provide years of trouble free operation if used in accordance with instructions set forth in this manual. If there are any questions or comments, please contact either your local supplier or WMH Tool Group. WMH Tool Group can also be reached at our web site: www.wmhtoolgroup.com.

Description

This high lift pallet truck is designed to reduce lifting injuries and increase productivity by easily lifting, lowering, and transporting heavy loads up to 2,200 pounds on open pallets and skids only. It does not operate with closed pallets unless the pallet is placed on top of the forks.

The welded steel frame features a powder coat finish to inhibit rust. A powerful two-stage hydraulic pump features quick lifting action with no load, and automatic overload bypass protection. The pump may be operated with a pallet truck style handle or foot lever. An automatic floor brake engages when the forks are raised.

Specifications

Model Number.....	HLPT-2745
Stock Number	140088
Capacity (lbs)	2,200
Minimum Fork Height (in).....	3-3/8
Maximum Fork Height (in.).....	32
Fork Width (in).....	6-1/4
Overall Fork Dimensions L x W (in)	45 x 27
Load Wheel OD x W (in)	3 x 2 Nylon
Steer Wheel OD x W (in).....	6 x 2 Poly/Steel
Overall Dimensions L x W x H (in)	63 x 27-3/16 x 50
Net Weight (lbs)	238

The above specifications were current at the time this manual was published, but because of our policy of continuous improvement, WMH Tool Group reserves the right to change specifications at any time and without prior notice, without incurring obligations.

Assembly and Adjustment

(Numbers in parentheses refer to parts breakdown on page 9.)

Open shipping container and check for shipping damage. Report any damage immediately to your distributor and shipping agent. Missing parts, if any, should be reported to your distributor. Do not discard any shipping material until the Pallet Truck is assembled and working properly.

1. The pallet truck has a "closed" oil plug installed in the pump body. This plug was for shipping purposes only, to prevent oil leakage. It should be removed and replaced with the provided oil plug (158) that has a *hole* in the top. This will allow the correct atmospheric pressure to be maintained in the hydraulic system.

Note: Individual pallet trucks are assembled and ready to use. Pallet trucks purchased in crate quantities require some assembly. Match the number label on the handle to the number label on the frame, prior to assembly.

2. Remove the three M10x25 socket head cap screws (185), three M10 lock washers (186) and the hex wrench from the spare parts bag.
3. Assemble the handle (102) to the handle base (181) using the screws and lock washers. Tighten the screws firmly.
4. Put the chain's eye bolt (110) into the slot at the front end of the pendulum arm (112). The hex nut (113) should be installed at the end of the eye bolt (110).
5. There are three positions for the release lever (106) on the handle. Down position is for lifting the forks; Up position is for lowering forks; and Middle position is neutral causing no action of the forks. Test each position for proper function.
6. Set the lever on the handle to neutral (middle position), and turn the hex nut (113) while pumping the handle. When lifting action stops, give the hex nut one more turn. The hex nut (113) is properly adjusted when pumping the handle in the neutral position causes no movement of the hydraulic ram.

Air may become trapped in the hydraulic system of the pallet truck during shipment, as well as during periods of inactivity. Bleed this air from the system as follows:

7. Press foot lever (165) or pump handle (102) repeatedly to lift the forks to the highest position. Then pull and hold release lever

(106) on pump handle while pumping handle up and down to lower the forks to their lowest position. Repeat this procedure 3 to 4 complete cycles to release any trapped air in the hydraulic system and to confirm all components are functioning properly.

▲WARNING Failure to comply with all of these safety precautions may result in loss of load, damage to pallet truck, personal injury and/or property damage.

Operation

The pallet truck is designed for use with open style pallets or skids only. Closed style pallets must be placed on top of forks prior to use.

The handle is designed to pull and steer the pallet truck only. Do not use the handle as a leverage tool.

▲WARNING Do not attempt to move pallet truck with forks in raised position. Lower forks before moving pallet truck with load.

1. To raise forks, pump foot pedal or handle up and down until desired height is reached.

NOTE: The hydraulic pump assembly features a safety overload bypass system. If pallet truck load exceeds rated capacity, only the cylinder (308) will extend; the piston rod (306) will not.

2. To lower the forks, pull the release lever on the handle slowly to allow load to descend in a cautious and controlled manner. **NOTE:** Always loosen the lock knob (187) before attempting to move the release lever.

▲CAUTION When not in use, do not allow heavy loads to remain on the forks for extended periods of time. Always lower forks completely when not in use.

Maintenance

For optimum performance, periodically lubricate chain (109) with light oil.

Keep the pump properly filled with hydraulic oil. Do not mix oils.

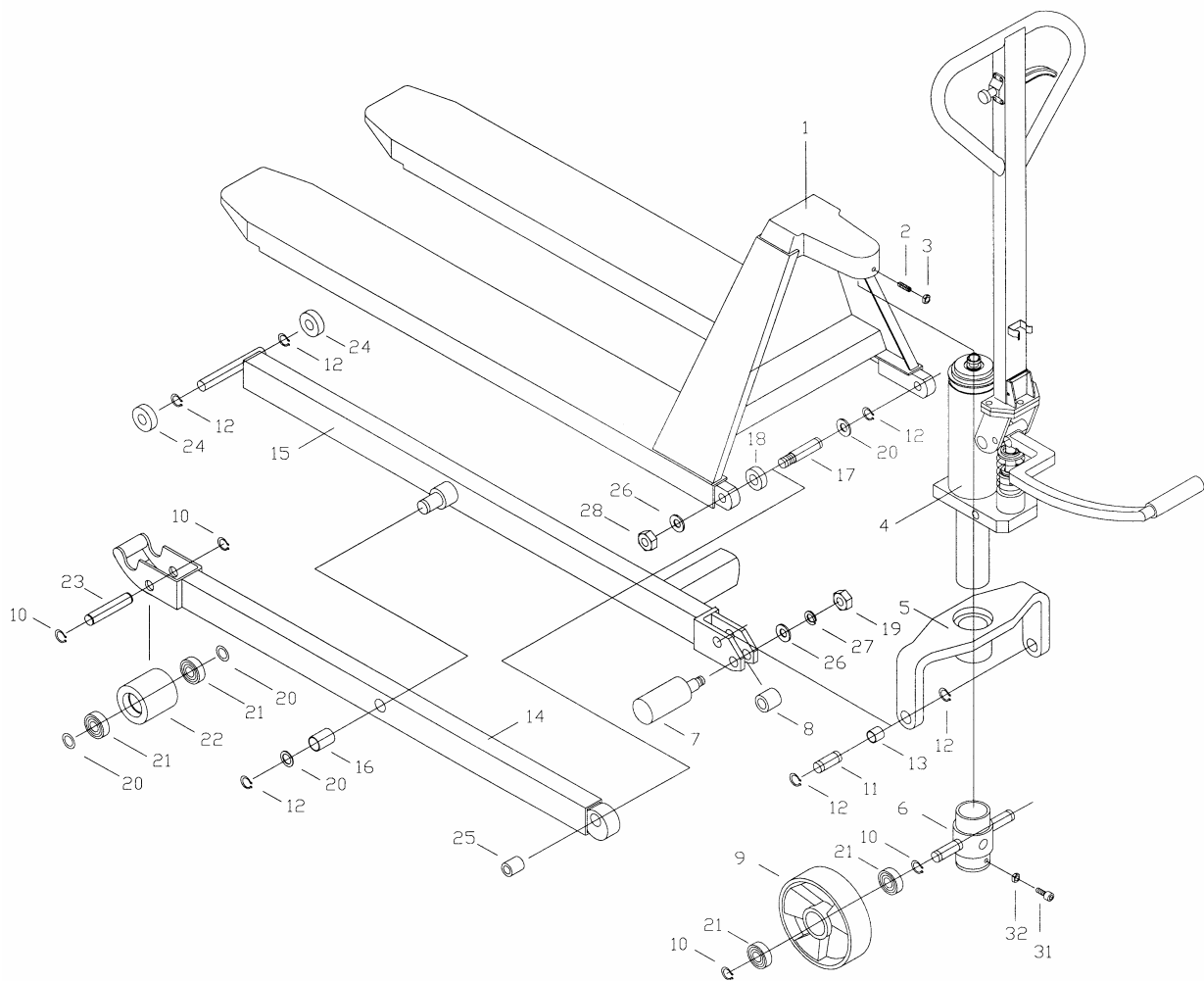
Troubleshooting

Trouble	Probable Cause	Remedy
Forks will not lift.	Oil level is low, or oil is too viscous.	Fill with oil, or change oil.
	Oil has impurities.	Change oil.
	Hex nut (113) is too high on eye bolt (110) and release valve not closing.	Adjust hex nut (113) on eye bolt (110) to allow release valve to close properly.
	Air trapped in hydraulic system.	Release air from system by pulling release lever (106), then pumping handle up and down several times.
Forks do not lift to maximum height.	Hydraulic level low.	Lower forks fully and add hydraulic oil through fill hole (158).
Forks will not lower.	Lifting piston (306) is deformed from overloading.	Replace lifting piston.
	The fork was kept in high position for extended time resulting in rusting and jamming of the exposed piston rod.	Always keep forks in lowest position when not in use. Keep ram and lifting piston lubricated and away from moisture.
	Hex nut (113) not adjusted properly on eye bolt (110).	Adjust hex nut to allow release valve to close properly.
	Fork frame (1) and fork roller (6) are jammed.	Correct jam; replace fork roller if necessary.
Hydraulic fluid leak.	Seal parts worn, cracked or in other ways damaged.	Replace worn or damaged parts.
Forks descend without pulling release lever.	Release valve unable to close properly due to impurities in hydraulic oil.	Replace with new hydraulic fluid.
	Hydraulic system damaged.	Inspect and replace damaged parts.
	Air trapped in hydraulic pump.	Release air from pump by pulling release lever (106) then pumping handle up and down several times.
	Seal parts worn or damaged in hydraulic pump.	Replace worn or damaged parts.
	Hex nut (113) is not in correct position on eye bolt (110).	Adjust hex nut to allow release valve to close properly.

Replacement Parts

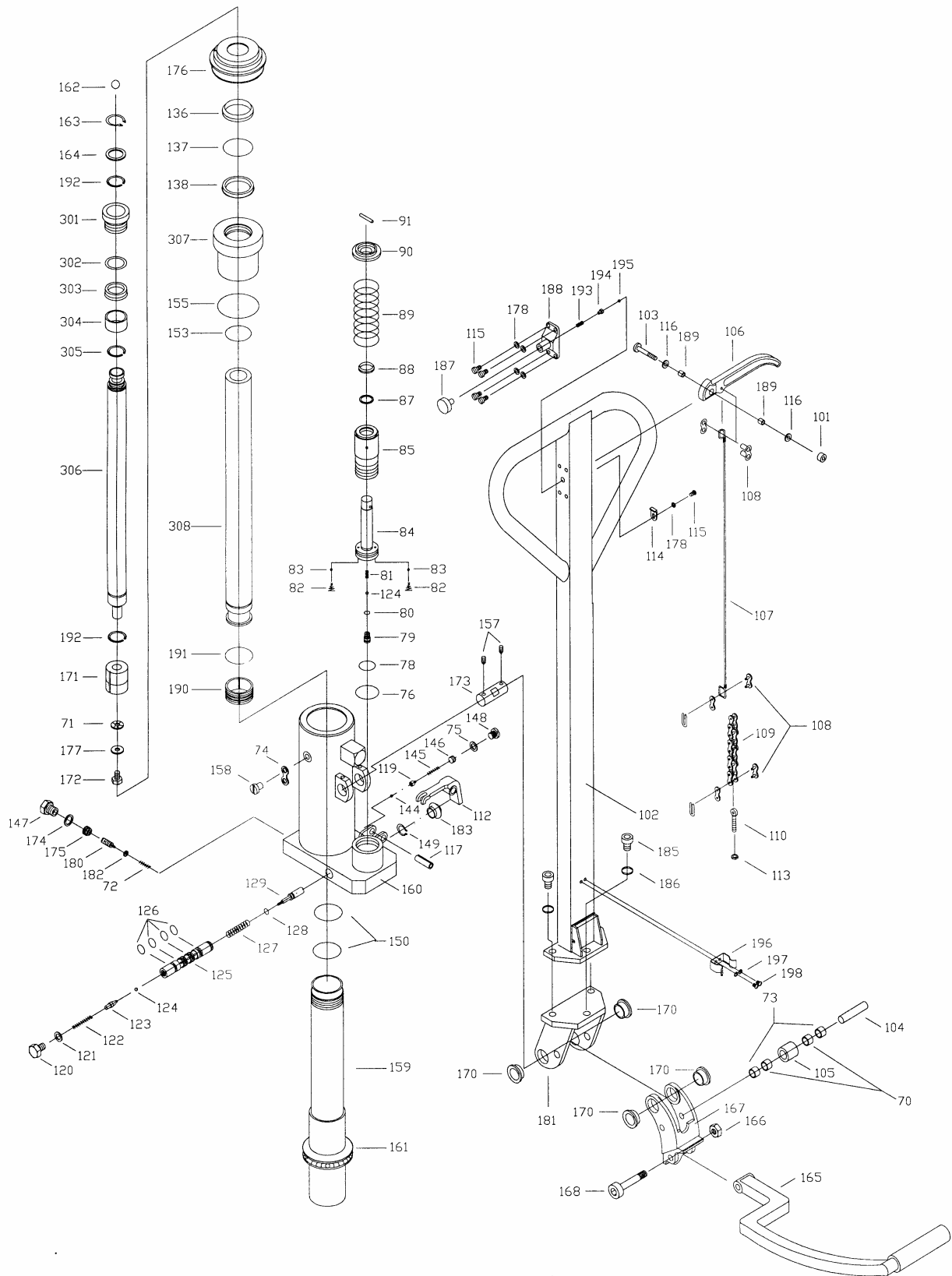
Replacement parts are listed on the following pages. To order parts or reach our service department, call 1-800-274-6848 between 7:30 a.m. and 6:00 p.m. (CST), Monday through Friday. Having the Model Number and Serial Number of your machine available when you call will allow us to serve you quickly and accurately.

Frame Assembly



Parts List: Frame Assembly

Index No.	Part No.	Description	Size	Qty
1	HLPT2745-1	Fork Frame		1
2	HLPT2745-2	Set Screw	M8x30	1
3	TS-1541031	Nylon Insert Lock Nut	M8	1
4	HLPT2745-4	Lift Unit		1
5	HLPT2745-5	Hold Yoke		1
6	HLPT2754-6	Wheel Base		1
7	HLPT2745-7	Centrifugal Axle		2
8	HLPT2745-8	Spacer		2
9	HLPT2745-9	Steer Wheel		2
10	HLPT2745-10	Snap Ring	Ø20	8
11	HLPT2745-11	Pin		2
12	HLPT2745-12	Snap Ring	Ø22	12
13	HLPT2745-13	Bushing	Ø25x22x20	2
14	HLPT2745-14	Outer Leg		2
15	HLPT2745-15	Inner Leg		1
16	HLPT2745-16	Bushing	Ø25x22x40	2
17	HLPT2745-17	Pin		2
18	HLPT2745-18	Collar		2
19	TS-154010	Hex Nut	M16	2
20	HLPT2745-20	Washer	Ø30x22.2x1	8
21	BB-6204ZZ	Ball Bearing	6204ZZ	8
22	HLPT2745-22	Front Wheel		2
23	HLPT2745-23	Front Wheel Axle		2
24	HLPT2745-24	Nylon Roller		4
25	HLPT2745-25	Bushing	Ø25x22x30	2
26	TS-155010	Flat Washer	M16	4
27	TS-2361161	Lock Washer	M16	2
28	TS-2342161	Nylon Insert Lock Nut	M16	2
31	TS-1504051	Socket Head Cap Screw	M8x25	1
32	TS-1540061	Hex Nut	M8	1
	HLPT2745-SWA	Steer Wheel Assembly (Index #6, 9, 10, 21, 31, 32)		1



Parts List: Pump Assembly

Index No.	Part No.	Description	Size	Qty
70	HLPT2745-70	Bushing	Ø12x10x10	2
71	HLPT2745-71	Washer		1
72	HLPT2745-72	Spring		1
73	HLPT2745-73	Spacer		2
74	HLPT2745-74	Washer		1
75	HLPT2745-75	Gasket		1
76	HLPT2745-76	O-Ring	Ø37.5x3.55	1
78	HLPT2745-78	O-Ring	Ø24.5x1.8	1
79	HLPT2745-79	Screw		1
80	HLPT2745-80	O-Ring	Ø6.9x1.8	1
81	HLPT2745-81	Spring		1
82	HLPT2745-82	Spring		2
83	SB-3MM	Steel Ball	3mm	2
84	HLPT2745-84	Plunger Piston		1
85	HLPT2745-85	Pump Cylinder		1
87	HLPT2745-87	Y-Ring	Ø26x18x5	1
88	HLPT2745-88	Dust Seal	Ø27.5x17.5x6	1
89	HLPT2745-89	Spring		1
90	HLPT2745-90	Spring Cover		1
91	HLPT2745-91	Pin		1
101	TS-1541021	Nylon Insert Lock Nut	M6	1
102	HLPT2745-102	Handle with Soft Grip		1
103	TS-1482081	Hex Cap Screw	M6x40	1
104	HLPT2745-104	Pin		1
105	HLPT2745-105	Roller		1
106	HLPT2745-106	Release Lever		1
107	HLPT2745-107	Release Rod		1
108	HLPT2745-108	Chain Connector		3
109	HLPT2745-109	Chain		1
110	HLPT2745-110	Eye Bolt		1
112	HLPT2745-112	Cam		1
113	TS-1541021	Nylon Insert Lock Nut		1
114	HLPT2745-114	Positioner		1
115	TS-1533032	Pan Head Screw	M5x10	5
116	TS-1550041	Flat Washer	M6	2
117	HLPT2745-117	Spring Pin	M10x35	1
119	HLPT2745-119	Valve Seat		1
120	HLPT2745-120	Hex Head Screw	M10x1Px12	1
121	HLPT2745-121	Gasket		1
122	HLPT2745-122	Spring		1
123	HLPT2745-123	Release Valve		1
124	SB-5MM	Steel Ball	5mm	2
125	HLPT2745-125	Valve Plug		1
126	HLPT2745-126	O-Ring	Ø11.2x2.65	4
127	HLPT2745-127	Spring		1
128	HLPT2745-128	O-Ring	Ø6.9x1.6	1
129	HLPT2745-129	Release Rod		1
136	HLPT2745-136	Dust Seal		1
137	HLPT2745-137	O-Ring	Ø34.2x3.65	1
138	HLPT2745-138	Y-Ring		1
144	SB-4MM	Steel Ball	4mm	1
145	HLPT2745-145	Spring		1
146	HLPT2745-146	Adjusting Screw		1
147	HLPT2745-147	Sealing Screw		1
148	HLPT2745-148	Screw Plug		1
149	HLPT2745-149	Snap Ring	Ø16	1

150	HLPT2745-150	O-Ring	Ø45x2.65	2
153	HLPT2745-153	O-Ring	Ø43.5x2.65	1
155	HLPT2745-155	O-Ring	Ø71x2.65	1
157	TS-1523051	Set Screw	M6x16	2
158	HLPT2745-158	Hollow Oil Fill Screw		1
159	HLPT2745-159	Ram Cylinder		1
160	HLPT2745-160	Pump Housing		1
161	HLPT2745-161	Thrust Bearing	8110	1
162	HLPT2745-162	Steel Ball	19mm	1
163	HLPT2745-163	Snap Ring	Ø25	1
164	HLPT2745-164	Washer	Ø35x25x2	1
165	HLPT2745-165	Foot Lever		1
166	TS-1540071	Hex Nut	M10	1
167	HLPT2745-167	Foot Lever Bracket		1
168	HLPT2745-168	Link Bolt		1
170	HLPT2745-170	Bushing		4
171	HLPT2745-171	Ram Piston		1
172	HLPT2745-172	Socket Head Cap Screw	M8x14	1
173	HLPT2745-173	Axle		1
174	HLPT2745-174	Gasket	Ø14	1
175	HLPT2745-175	Lock Screw		1
176	HLPT2745-176	Rubber Sleeve		1
177	HLPT2745-177	Washer	Ø20x8.2x3	1
178	TS-1550031	Flat Washer	M5	5
180	HLPT2745-180	Adjusting Screw		1
181	HLPT2745-181	Handle Base		1
182	HLPT2745-182	Adjusting Washer		1
183	HLPT2745-183	Rubber Sleeve		1
185	TS-1505031	Socket Head Cap Screw	M10x25	3
186	TS-1551071	Lock Washer	M10	3
187	HLPT2745-187	Release Lever Lock Screw		1
188	HLPT2745-188	Spring Socket		1
189	HLPT2745-189	Spacer		2
190	HLPT2745-190	Copper Piston		1
191	HLPT2745-191	Snap Ring	Ø37x2.5	1
192	HLPT2745-192	Snap Ring	Ø25	2
193	HLPT2745-193	Buffer Spring		1
194	HLPT2745-194	Push Rod		1
195	SB-6.5MM	Steel Ball	6.5mm	1
196	HLPT2745-196	Spring Seat		1
197	TS-1550021	Flat Washer	M4	2
198	TS-1521031	Set Screw	M4x8	2
301	HLPT2745-301	Bushing		1
302	HLPT2745-302	Back-Up Ring	Ø26x32x5	1
303	HLPT2745-303	Y-Ring	Ø26x62x5	1
304	HLPT2745-304	Bushing		1
305	HLPT2745-305	Snap Ring	Ø30.5x1.6	1
306	HLPT2745-306	Piston Rod		1
307	HLPT2745-307	Cylinder Head		1
308	HLPT2745-308	Cylinder		1
	HLPT2745-PUA	Pump Unit Assembly		1
	HLPT2745-HA	Handle Assembly		1
	HLPT2745-IL	ID Label		1
	HLPT2745-CL	Capacity Label		1
	HLPT2745-OWL	Operational Warning Label		1
	HLPT2745-RLIL	Release Lever Instruction Label		1
	HLPT2745-LSL	Lock Screw Label		1
	HLPT2745-FLWL	Foot Lever Warning Label		1

TEST CERTIFICATE

COMMODITY	High Lift Pallet Truck
MODEL	HLPT-2745
SERIAL NO.	
CAPACITY	2,200 lbs
TEST LOAD	lbs
DATE OF INSPECTION	
JUDGEMENT	PASSED
INSPECTOR	



WMH Tool Group
2420 Vantage Drive
Elgin, Illinois 60124
Phone: 800-274-6848
www.wmhtoolgroup.com