



## OWNER'S MANUAL

### FJ-3-1/2 Farm Jack



This manual has been prepared for the owner and operators of a JET model FJ-3-1/2 Farm Jack. Its purpose, aside from proper jack operation, is to promote safety through the use of accepted correct operating and maintenance procedures. Completely read the safety and maintenance instructions before operating or servicing the jack. To obtain maximum life and efficiency from your jack, and to aid in using it safely, read this manual thoroughly and follow instructions carefully.

## **Warranty & Service**

WMH Tool Group warrants every product it sells. If one of our tools needs service or repair, one of our Authorized Repair Stations located throughout the United States can give you quick service.

In most cases, any one of these WMH Tool Group Repair Stations can authorize warranty repair, assist you in obtaining parts, or perform routine maintenance and major repair on your JET, Performax, Powermatic, or Wilton tools.

For the name of an Authorized Repair Station in your area, call 1-800-274-6848.

## **More Information**

WMH Tool Group is consistently adding new products to the line. For complete, up-to-date product information, check with your local WMH Tool Group distributor or visit [wmhtoolgroup.com](http://wmhtoolgroup.com).

## **Limited Warranty**

WMH Tool Group makes every effort to assure that its products meet high quality and durability standards and warrants to the original retail consumer/purchaser of our products that each product be free from defects in materials and workmanship as follows: 1 YEAR LIMITED WARRANTY ON ALL PRODUCTS UNLESS SPECIFIED OTHERWISE. This warranty does not apply to defects due directly or indirectly to misuse, abuse, negligence or accidents, normal wear-and-tear, repair or alterations outside our facilities, or to a lack of maintenance.

WMH TOOL GROUP LIMITS ALL IMPLIED WARRANTIES TO THE PERIOD SPECIFIED ABOVE, FROM THE DATE THE PRODUCT WAS PURCHASED AT RETAIL. EXCEPT AS STATED HEREIN, ANY IMPLIED WARRANTIES OR MERCHANTABILITY AND FITNESS ARE EXCLUDED. SOME STATES DO NOT ALLOW LIMITATIONS ON HOW LONG THE IMPLIED WARRANTY LASTS, SO THE ABOVE LIMITATION MAY NOT APPLY TO YOU. WMH TOOL GROUP SHALL IN NO EVENT BE LIABLE FOR DEATH, INJURIES TO PERSONS OR PROPERTY, OR FOR INCIDENTAL, CONTINGENT, SPECIAL, OR CONSEQUENTIAL DAMAGES ARISING FROM THE USE OF OUR PRODUCTS. SOME STATES DO NOT ALLOW THE EXCLUSION OR LIMITATION OF INCIDENTAL OR CONSEQUENTIAL DAMAGES, SO THE ABOVE LIMITATION OR EXCLUSION MAY NOT APPLY TO YOU.

To take advantage of this warranty, the product or part must be returned for examination, postage prepaid, to an Authorized Repair Station designated by our office. Proof of purchase date and an explanation of the complaint must accompany the merchandise. If our inspection discloses a defect, WMH Tool Group will either repair or replace the product, or refund the purchase price if we cannot readily and quickly provide a repair or replacement, if you are willing to accept a refund. WMH Tool Group will return repaired product or replacement at our expense, but if it is determined there is no defect, or that the defect resulted from causes not within the scope of our warranty, then the user must bear the cost of storing and returning the product. This warranty gives you specific legal rights; you may also have other rights, which vary from state to state.

WMH Tool Group sells through distributors only. WMH Tool Group reserves the right to effect at any time, without prior notice, those alterations to parts, fittings, and accessory equipment which they may deem necessary for any reason whatsoever.

## **WARNING**

- Read and understand all warnings and operating instructions before attempting to use the farm jack.
- This jack is designed and intended for use by properly trained and experienced personnel only. If you are not familiar with the proper and safe operation of a farm jack, do not use until proper training and knowledge have been obtained.
- Visually inspect and check operation of jack prior to each use.
- Use on hard, level surface only and center load on lifting nose prior to lifting to prevent shifting.
- Do not exceed rated capacities of the jack.
- Capacities: 7,000-lb. at 12" height; 5,000-lb. for winching or pulling with clevis clamp; 750-lb for clamping.
- Safety shear pin breaks and handle drops if 7,000-lb. capacity is exceeded at 12" height.
- Lifting capacity decreases as lifting nose distance from base increases.
- Always keep jack clean and oiled. Front and back of upright steel bar must be kept free from rust. Jack will not operate safely without proper lubrication.
- Improper use of this jack is **highly hazardous** and may cause serious injury or death.
- Never use jack on curved or tubular bumpers. The vehicle could slide off the jack and fall causing serious injury or death.
- Never attempt to raise more than one wheel at a time and do not lift wheel more than 2" above the ground.
- Always place handle in upright position with clip before tripping the reversing latch to lower load. This will prevent the handle from moving up and down rapidly, which could cause serious injury or death if handle comes into contact with any part of your body.
- Always keep your head away from the travel of the handle.
- Always keep a firm grip with both hands on handle when using this jack.
- Lowering the load can be dangerous. During lowering, the weight of the load pushes up against the handle. If your hands slip off the handle, or if the handle is in the horizontal position when you trip the reverse latch, it may move up very fast. If your head is in the travel path of the handle, it could strike you causing serious injury or death.
- Place complete lifting nose under object to be lifted. Lifting nose pulls up to point of lift without pumping handle.
- Always chock and block (stabilize) load to be lifted, as **jack will not stabilize load** to prevent it from falling.
- All persons must stay clear of load being lifted, lowered, pulled or clamped.
- Never work under a raised load unless load has been transferred to jack stands or suitable supports. As a safety precaution, insert ½" diameter bolt (not included) into steel upright bar immediately below lifting mechanism.
- If raised load falls, it can cause serious injury or death.
- Never push lifted load off jack.
- If any part of the jack fails to work properly, discontinue use and have jack repaired.
- Never attempt to repair jack while jack is under load.
- Jack must be loaded 110 lbs. or more to lower load step-by-step. Otherwise lifting nose drops.
- Never use extension on handle. Warranty is void if handle extension is used.
- Always use genuine factory replacement parts only when replacement is necessary.
- Failure to comply with all of these warnings may result in loss of load, damage to jack, personal injury and/or property damage.

## Table of Contents

Warranty .....	2
Warnings.....	3
Specifications .....	4
Lubrication.....	5
Operation .....	5-6
Parts List .....	7
Parts Breakdown .....	8

## Specifications

Model Number .....	<b>FJ-3-1/2</b>
Stock Number.....	440435
Lifting Capacity * (lbs).....	7,000
(* Rated capacity established with load at 1 foot height)	
Winching/Pulling Capacity (lbs) .....	5,000
Clamping Capacity (lbs).....	750
Minimum Height (in) .....	4-1/2
Maximum Height (in) .....	43-3/8
Lift per Handle Stroke (in).....	3/4
Lifting Saddle Size L x W (in) .....	4 x 1-1/2
Base Dimensions L x W (in) .....	7 x 4
Handle Length (in) .....	30
Net Weight (lbs).....	33
Shipping Weight (lbs) .....	35

## Introduction

Congratulations on your purchase of a JET Farm Jack. It is manufactured to high quality standards in compliance with ANSI/ASME B30.1-1992 safety standards.

This jack is a mechanical tool with the functions of a jack, hoist, winch, crane and clamp. It is simple and easy to operate, inspect and service, and is especially suited for field operations. With regular maintenance your JET Farm Jack will provide years of dependable service.

All farm jack users must read and understand the instructions and warnings in this manual before attempting to use the jack. For your convenience, please store this manual in the handle of your jack.

The specifications in this manual are given as general information and are not binding. JET, WMH Tool Group reserves the right to effect, at any time and without prior notice, changes or alterations to parts, fittings, and accessory equipment deemed necessary for any reason whatsoever.

## Lubrication

Always keep jack clean and oiled. Before every operation, inspect and make sure the following areas of the jack are lubricated (numbers refer to breakdown, pages 6 & 7):

1. Front and back edges of upright steel bar (3). Keep edges of upright steel bar free from rust.
2. Pin (8), clevis pin (9), and shear pin (12).
3. Small runner (11) including lifting spring (19) and lifting pin (20).
4. Reversing switch cam bar (22) and reversing switch spring (23).

Lubrication of these parts is essential to ensure proper jack operation and will prolong the life of the jack.

## Lifting Operation

1. Test jack on hard level surface with no load prior to operation. Pay close attention to lifting pin (20) and complete running gear assembly (28) operation.
2. Always keep a firm grip with both hands on the handle (A-Fig. 1) and never use handle extension or cheater bar. Use of handle extension will void warranty.
3. Place handle in handle clip. Lift reversing latch (B-Fig. 1). Lifting nose (C-Fig. 1) pulls up to point of lift without pumping handle.
4. Place complete lifting nose under object to be lifted to prevent load from shifting during operation. Upright steel bar must be pointing straight up.
5. Pump handle (A-Fig. 1) slowly to raise jack. Lifting pins should alternately engage upright steel bar for proper step-by-step operation.
6. Always chock and block (stabilize) load, as jack will not stabilize load. This will prevent load from shifting or rolling as you lift. Keep all persons clear from load being raised, lowered, pulled or winched.
7. Never work under a raised load unless load has been transferred to jack stands or other suitable supports. Insert  $\frac{1}{2}$ " bolt (not included) immediately below lifting mechanism as a safety precaution.

## WARNING

**Do not use jack to support the load. Do not lift more than one wheel per lift. Chock and block (stabilize) load prior to lift. Never get under a load without jack stands or other suitable support. Never use jack on curved or tubular bumpers. Always place the handle in the handle clip before tripping reversing latch. This will prevent the handle from moving up and down rapidly which, if it comes into contact with any part of your body, could cause serious injury or death. Always use two hands with firm grip on handle and keep head out of the travel of the handle. Always lower load slowly with extreme caution. Failure to comply may cause serious injury or death.**

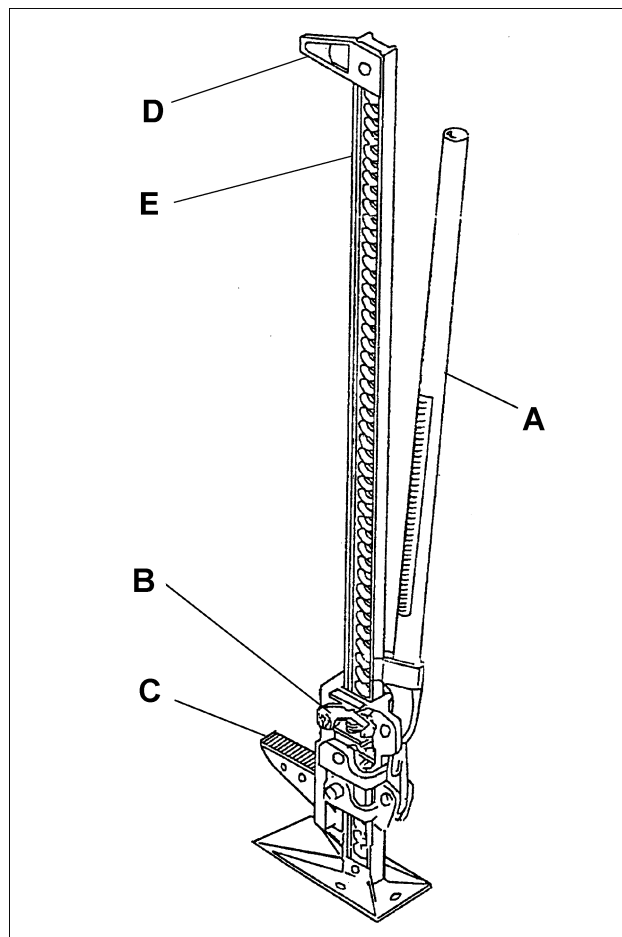


Fig. 1

8. Always keep handle in handle clip when not operating jack.
9. To lower the jack, place handle in handle clip. Push reversing latch (B-Fig. 1) downward.  
**NOTE:** Jack must have 110 lbs. load minimum to lower jack step-by-step, otherwise lifting nose will drop.
10. Push handle down with both hands firmly and slowly for proper step-by-step operation until load is completely lowered. Load will press up on handle during lowering operation.

### Winching Operation

1. Fasten top clamp clevis (D-Fig. 1) securely to upright steel bar (E-Fig. 1).
2. Securely attach one end of a chain or strap to the object to be winched. Attach the other end of the chain or strap to the lifting nose (C-Fig. 1) of the jack.
3. Take another chain or strap and secure one end to a fixed object. Secure the other end of the chain or strap to the top clamp clevis (D-Fig. 1) on the jack.
4. Raise or lower according to previous instructions.



### **WARNING**

**Do not exceed the 5000 lb. winching capacity, or damage to jack and/or personal injury may occur. Working load of each chain or strap must be greater than 5,000 lbs. Exceeding winching capacity may cause top clamp clevis to bend or break causing load to shift, or the chain or strap to snap back, resulting in injury and/or property damage.**

### Clamping Operation

1. Fasten top clamp clevis (D-Fig. 1) securely in a 90° position to upright steel bar (E-Fig. 1).
2. Object should be centered between top clamp and lifting nose.
3. Pump the handle as needed to clamp object in place.



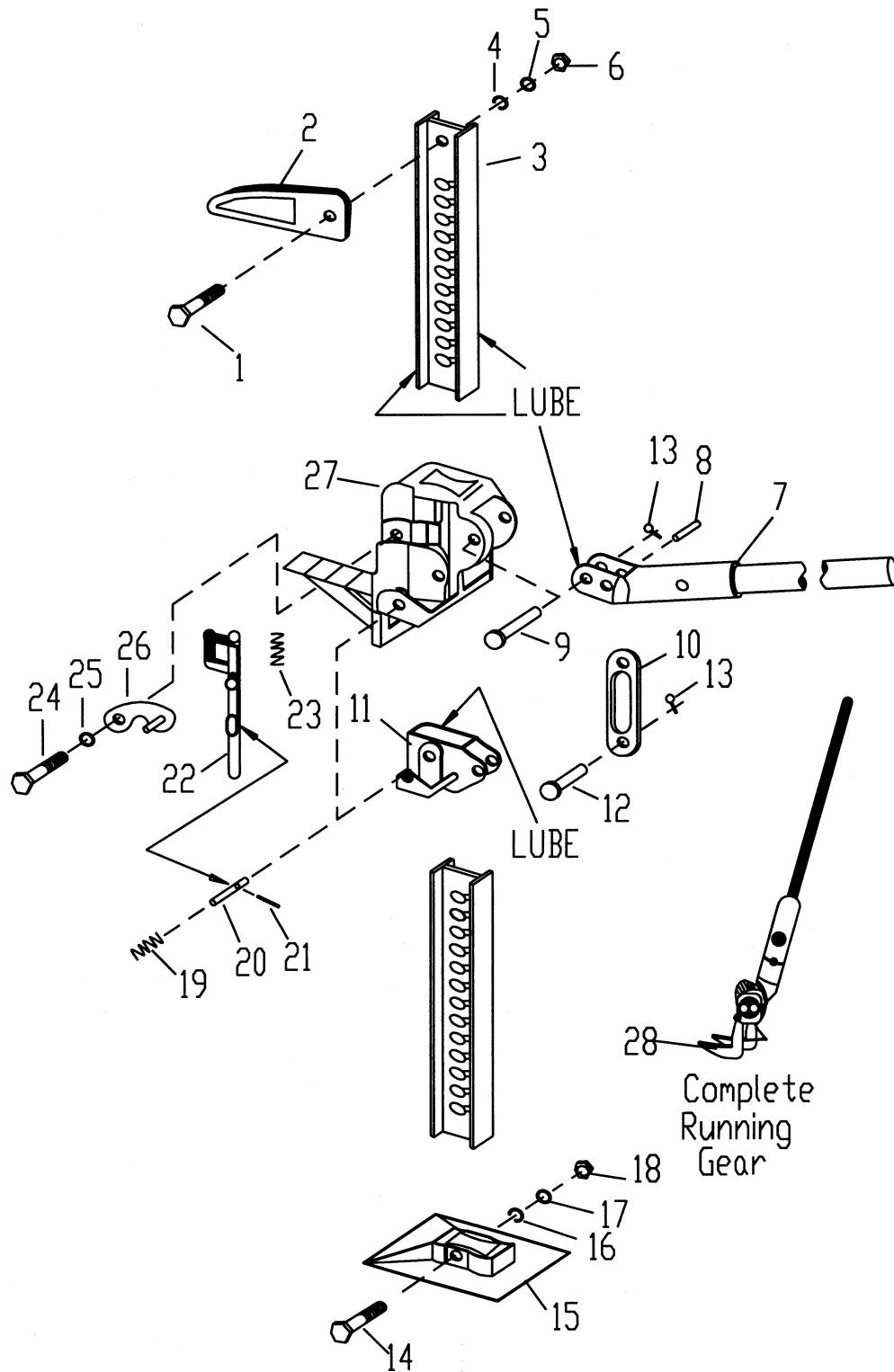
### **WARNING**

**Do not exceed the 750 lb. clamping capacity, or damage to jack and/or personal injury may occur. Exceeding clamping capacity may cause top clamp clevis to bend or break resulting in injury and/or property damage.**

### Storage

1. Place handle in upright position secured in handle clip.
2. Lift the reversing latch until it locks in the "up" position.
3. Store jack in upright position preferably indoors in a clean and dry location. If stored outdoors, use suitable cover to protect jack from moisture.

# FJ-3-1/2 Farm Jack



## Parts List for FJ-3-1/2 Farm Jack

Index No.	Part No.	Description	Size	Qty.
1	TS-1492041	Hex Cap Screw	M12 x 40	1
2	FJ3-2	Top Clamp Clevis		1
3	FJ3-3	Upright Steel Bar		1
4	TS-1551081	Lock Washer	M12	1
5	TS-2360121	Flat Washer	M12	1
6	TS-1540081	Hex Nut	M12	1
7	FJ3-7	Handle*		1
8	FJ3-8	Pin*		1
9	FJ3-9	Clevis Pin*	ø12 x 56	1
10	FJ3-10	Connecting Rod*		1
11	FJ3-11	Small Runner*		1
12	FJ3-12	Shear Pin*		1
13	FJ3-13	Split Cotter Pin*	ø2 x 4mm	2
14	TS-1482061	Hex Cap Screw	M6 x 30	1
15	FJ3-15	Base		1
16	TS-1551041	Lock Washer	M6	1
17	TS-1550041	Flat Washer	M6	1
18	TS-1540041	Hex Nut	M6	1
19	FJ3-19	Lifting Pin Spring*		2
20	FJ3-20	Lifting Pin*		2
21	FJ3-21	Cross Pin*	ø5 x 55mm	2
22	FJ3-22	Reversing Switch Cam Bar*		1
23	FJ3-23	Reversing Switch Spring*		1
24	TS-1490011	Hex Cap Screw*	M8 x 12	1
25	TS-1550061	Flat Washer*	M8	1
26	FJ-26	Reversing Latch*		1
27	FJ3-27	Large Runner*		1
28	FJ3-28	Complete Running Gear Assembly (contains items with *)		1
	FJ3-ID	I.D. Label (not shown)		1
	FJ3-WL	Warning Label for Handle (not shown)		1