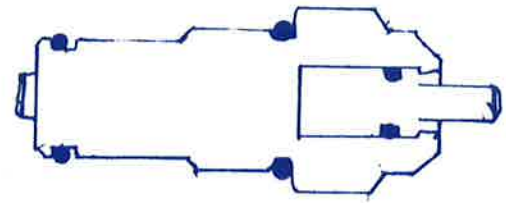
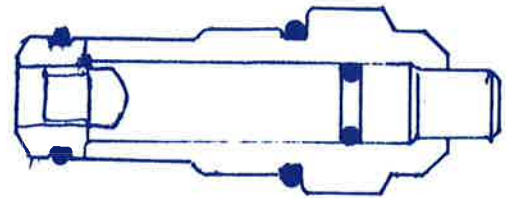


Release Insert "O" Ring Kit #38

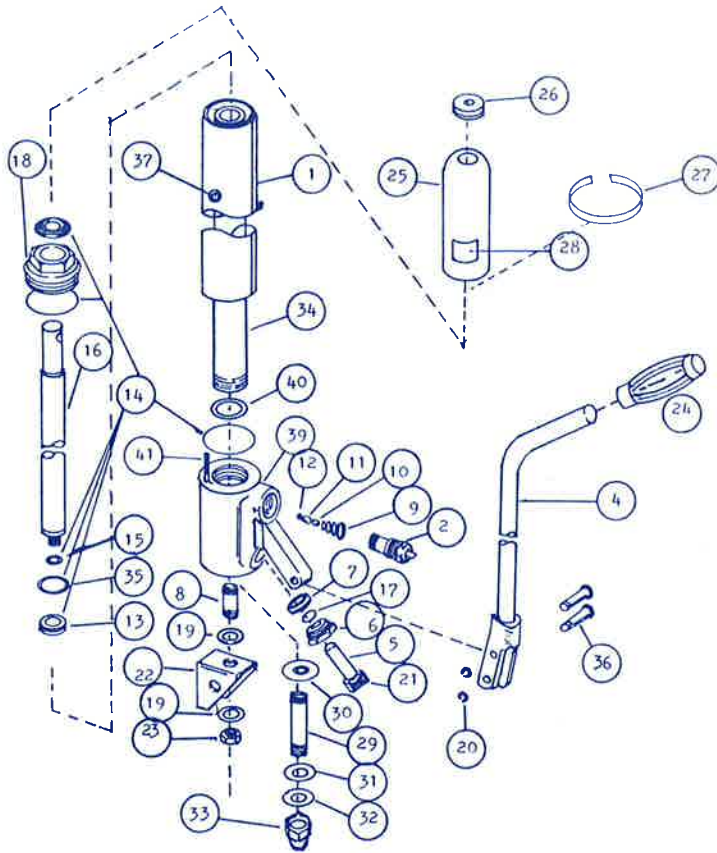


All Jacks Except HBL-J-1

Release Insert "O" Ring Kit #38



HBL-J-1 Only



ITEM LOCATION	DESCRIPTION FOR PARTS FOR POWER PACKER JACK SHOWN ON FACING PAGE	QUANTITY PER UNIT	PATIENT LIFTER PAINTED P-HLA-J	PATIENT LIFTER CHROME C-HLA-J	REG & SHORT KARTOP KT-J	TRAVEL LIFTER C-TL-J	VAN KARTOP V-KTJ	SWIM POOL PAINTED P-SP-J	SWIM POOL CHROME C-SP-J	BATH LIFT C-HBL-J
1	Reservoir only	1	X-432	X-436	X-437	X-438	X-432	X-465	X-466	X-467
2	Release Insert Assem. & Gasket Kit	1	X-416	X-447	X-450	X-447	X-450	X-416	X-447	X-449
3	Beam Pins & Retainer Kit (20 & 36)	1	X-417 all							
4	Handle Only, Less Pins & Hand Grip	1	X-419	X-452	X-451	X-454	X-451	X-419	X-452	X-452
5	Plunger Assem. (incl. Clip)	1	X-420	X-453	X-420	X-453	X-420	X-420	X-453	X-455
6	Gland Nut	1	X-421	X-456	X-421	X-456	X-421	X-421	X-456	X-457
7	"O" Ring and Packing Kit	1	X-422	X-422	X-422	X-422	X-422	X-422	X-422	X-458
8	Stud (3/8 - 16 x 1")	1	X-810	X-810	none	X-810	X-810	X-810	X-810	X-810
9	Spring	1	X-427 all							
10	Ball (3/8" dia.)	1	X-428 all							
11	Pin (Spacer)	1	X-429 all							
12	Ball (3/8" dia.)	1	X-430 all							
13	Piston	1	Incl. in #14 kit							
14	Glide Ring, "O" Ring & Quad Kit	1	X-433 all							
15	O Ring	1	X-474							
16	Plunger (ram)	1	X-435	X-435	X-459	X-459	X-460	X-435	X-435	X-461
17	Backup	1	X-440 all							
18	Top Cap	1	X-439	X-462	X-439	X-462	X-439	X-439	X-462	X-462
19	Nylon Washer	2	X-314	X-314	X-314	none	X-314	X-314	X-314	X-314
20	Snap Rings only (set of 2)	1	X-468 all							
21	Clip only	1	X-469 all							
22	Adapter	1	J-137	J-138	J-139	none	VKT-228	J-137	J-138	J-138
23	Locknut (3/8-16)	1	X-962	X-962	X-962	none	X-962	X-962	X-962	X-962
24	Handgrip	1	X-923 all							
25	Skirt for Jack (incl. #26, #27, #28)	1	J-131	J-130	J-133	J-132	J-135	J-131	J-130	J-136
26	Grommet for Skirt	1	X-353 all							
27	Felt Strip for Skirt	1	J-121 all							
28	Jack Operation Sticker	1	J-120 all							
29	Stud (3/8-16 x 2 3/8)	1	none	none	none	X-1162	none	none	none	none
30	Nylon Washer 2" O.D. x 3/8 I.D.	1	none	none	none	X-975	none	none	none	none
31	Nylon Washer 3/4" O.D. x 3/8 I.D.	1	none	none	none	X-971	none	none	none	none
32	Steel Washer 3/8" O.D. x 3/8 I.D.	1	none	none	none	X-970	none	none	none	none
33	Hex Cap Locknut 3/8-16	1	none	none	none	X-961	none	none	none	none
34	Cylinder only	1	X-470	X-470	X-471	X-471	X-470	X-472	X-472	X-473
35	Glide Ring (Piston Seal)	1	X-431							
36	Beam Pin only	2	X-475 all							
37	Fill Hole Screw	1	X-476 all							
38	O Ring Kit for release insert	1	X-477	X-477	X-477	X-477	X-477	X-477	X-477	X-478
39	Base Only	1	X-479	X-480	X-479	X-480	X-479	X-479	X-480	X-490
40	Gasket	1	X-418 all							
41	Filter Screen	1	X-414 all							