

NOTE:

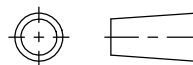
1. DIMENSIONS ARE INCHES [MILLIMETERS] AND SUBJECT TO FABRICATION TOLERANCES
2. WORKING PRESSURE: 7540 psi / 520 bar
3. CAPACITY: 10 METRIC TONS
4. OIL CAPACITY:
 - CYLINDER: 280 mL
 - RESERVOIR: FILL TO 500 mL
5. ADJUSTABILITY: 3 x 3.2 in / 3 x 81 mm
6. STROKE: 5.5 in / 140 mm

PROPRIETARY AND CONFIDENTIAL

THE INFORMATION CONTAINED IN THIS DRAWING IS THE SOLE PROPERTY OF HILMAN INCORPORATED. ANY REPRODUCTION IN PART OR AS A WHOLE WITHOUT THE WRITTEN PERMISSION OF HILMAN INCORPORATED IS PROHIBITED.

UNLESS OTHERWISE NOTED
DIMENSIONS ARE IN INCHES
TOLERANCES:
FRACTIONAL: $\pm 1/8$
ANGULAR: $\pm 5^\circ$
ONE PLACE DECIMAL: $\pm .03$
TWO PLACE DECIMAL: $\pm .015$
THREE PLACE DECIMAL: $\pm .005$

THIRD ANGLE PROJECTION



	NAME	DATE
DRAWN	SS	11/13/2012
CHECKED	GN	08/06/2013
ENG APPR.	DF	08/06/2013

COMMENTS:

HILMAN INC.

12 TIMBER LANE, MARLBORO, NJ 07746 USA

10 TON HYDRAULIC TOE JACK
HILMAN INCORPORATED

SIZE	DWG. NO.	REV.
A	HTJ-10D	
SCALE: 1:5	WEIGHT: 62 lb / 28 kg	SHEET 1 OF 1