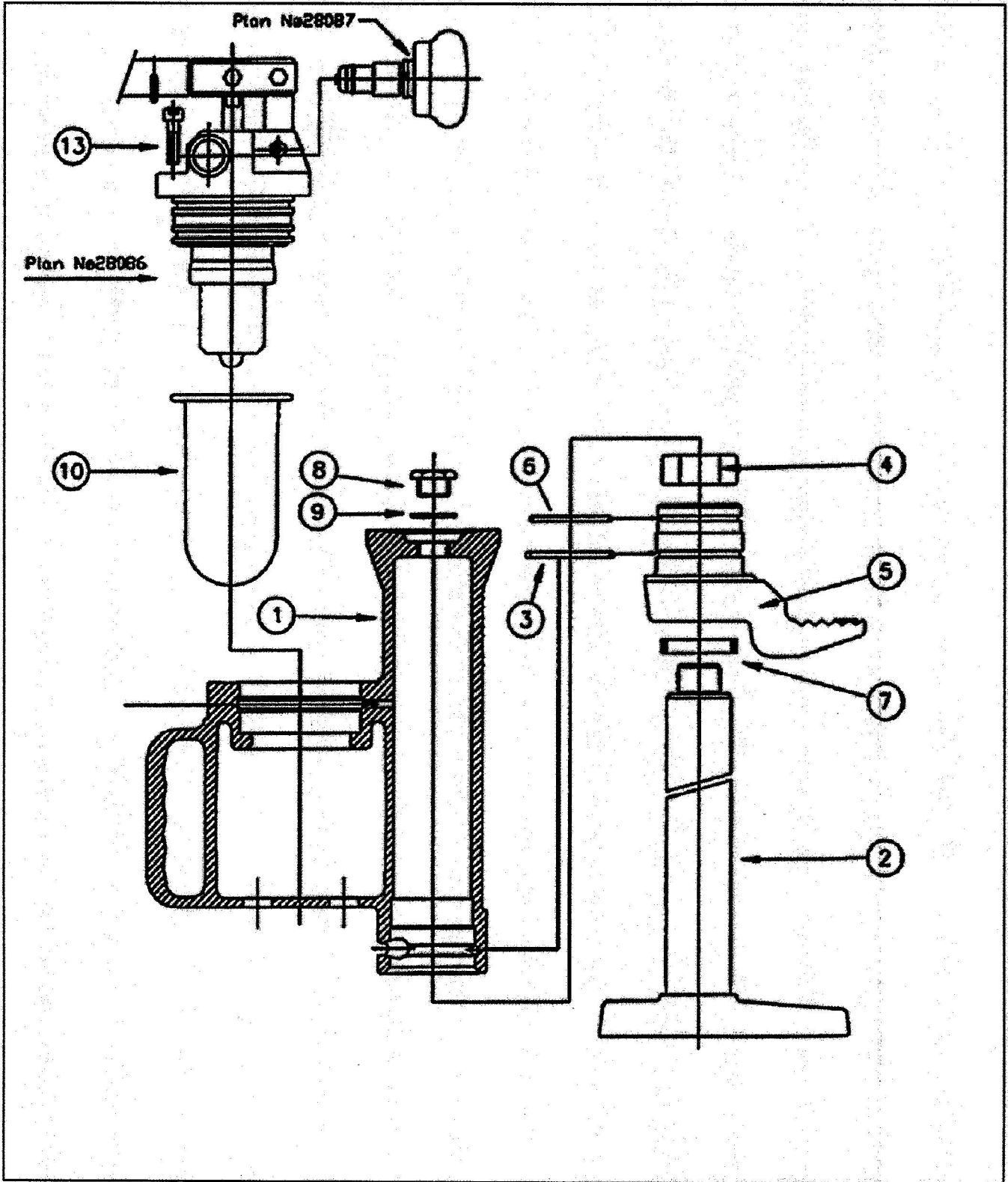


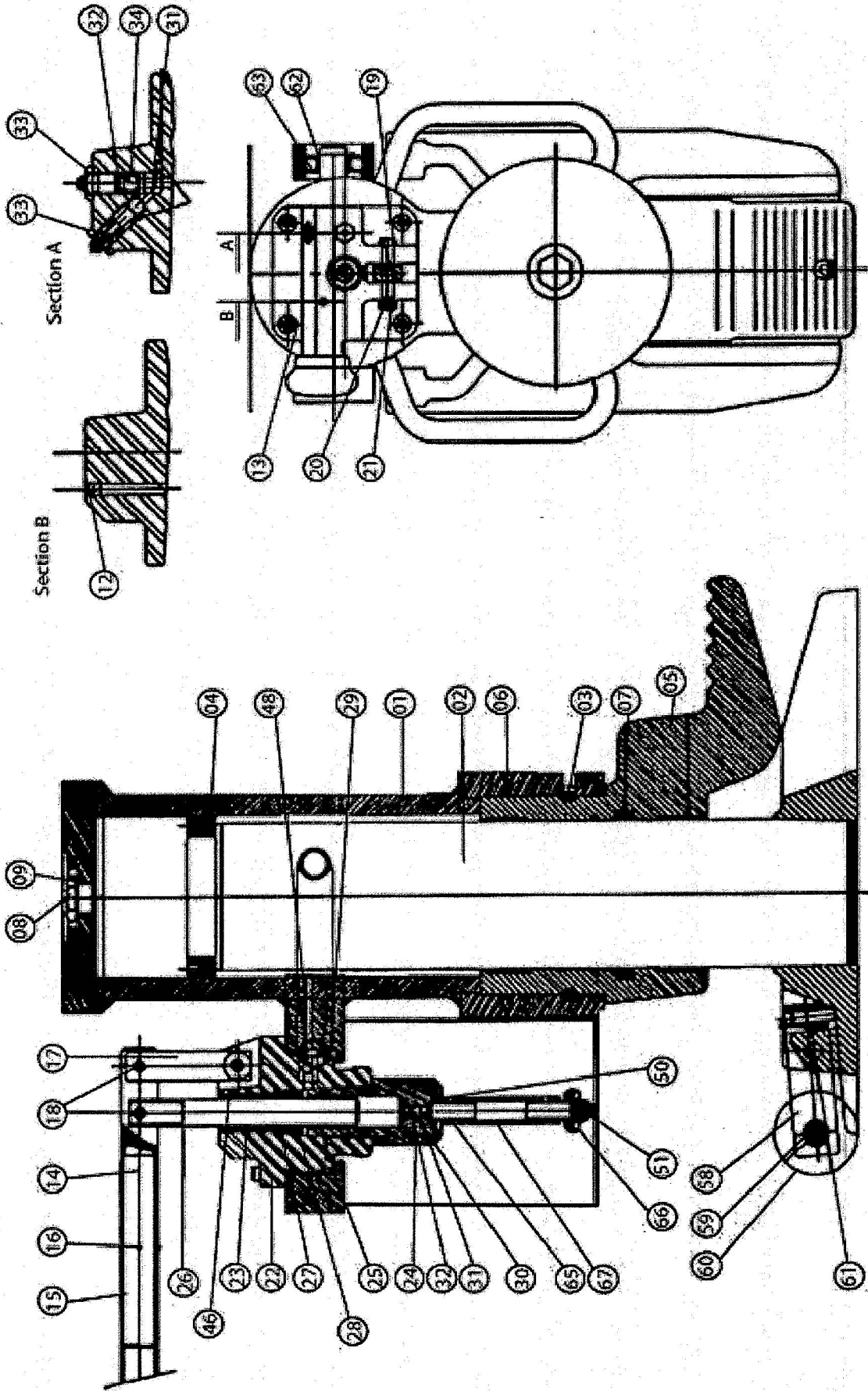
# EXPLODED VIEW: 5t AND 10t TOE JACKS



## 5 & 10T HYDRAULIC JACKS PART LIST

ITEM	QTY	5T JACK	10T JACK	DESCRIPTION
01	1	28502	28503	JACK BODY
02	1	28488	28543	COLUMN
03	1	25618	25642	SPRING RING
04	1	28487	28504	GUIDE
05	1	28481	28482	TOE
06	1	60659	60661	O-RING
07	1	60160	60161	SEAL
08	1	28447	28447	PLUG
09	1	60652	60652	BS SEAL
10	1	26650	27920	DIAPHRAGM
12	1	60494	60494	EXPANDER PLUG
13	4	60300	60300	SCREW
14	1	32735	32735	LEVER
15	1	26656	26656	HAND TUBE
16	1	60174	60174	BETA PIN
17	1	28478	28478	LINK
18	2	28448	28448	SPINDLE
19	1	26668	26668	SPINDLE
20	3	60029	60029	WASHER
21	3	60046	60046	NUT
22	1	28508	28508	PUMP BARREL
23	1	28513	28513	SLEEVE
24	1	28511	28511	VALVE BODY
25	1	60654	60654	O-RING
26	1	28477	28477	PISTON
27	1	60294	60294	SEAL
28	1	60582	60582	SEAL
29	2	60295	60295	SEAL
30	3	60164	60164	BALL
31	2	27047	27047	SPRING
32	2	25627	25627	STOP SCREW
33	2	28089	28089	PLUG
34	1	25631	25631	RELIEF VALVE
35	1	27592	27592	NOZZLE
36	1	60169	60169	BALL
37	1	25633	25633	SHUTTER
38	1	25632	25632	SPRING
39	1	60602	60602	SCREW
40	1	60660	60660	O-RING
41	1	60171	60171	SNAP RING
42	1	25635	25635	KNOB
43	1	60603	60603	SCREW
44	1	28517	28517	WASHER
45	1	60669	60669	SCREW
46	1	60668	60668	SEAL
47	1	60653	60653	SEALING WASHER
48	1	60651	60651	CHECK VALVE
50	1	60671	60671	SNAP RING
51	1	28573	28573	FILTER

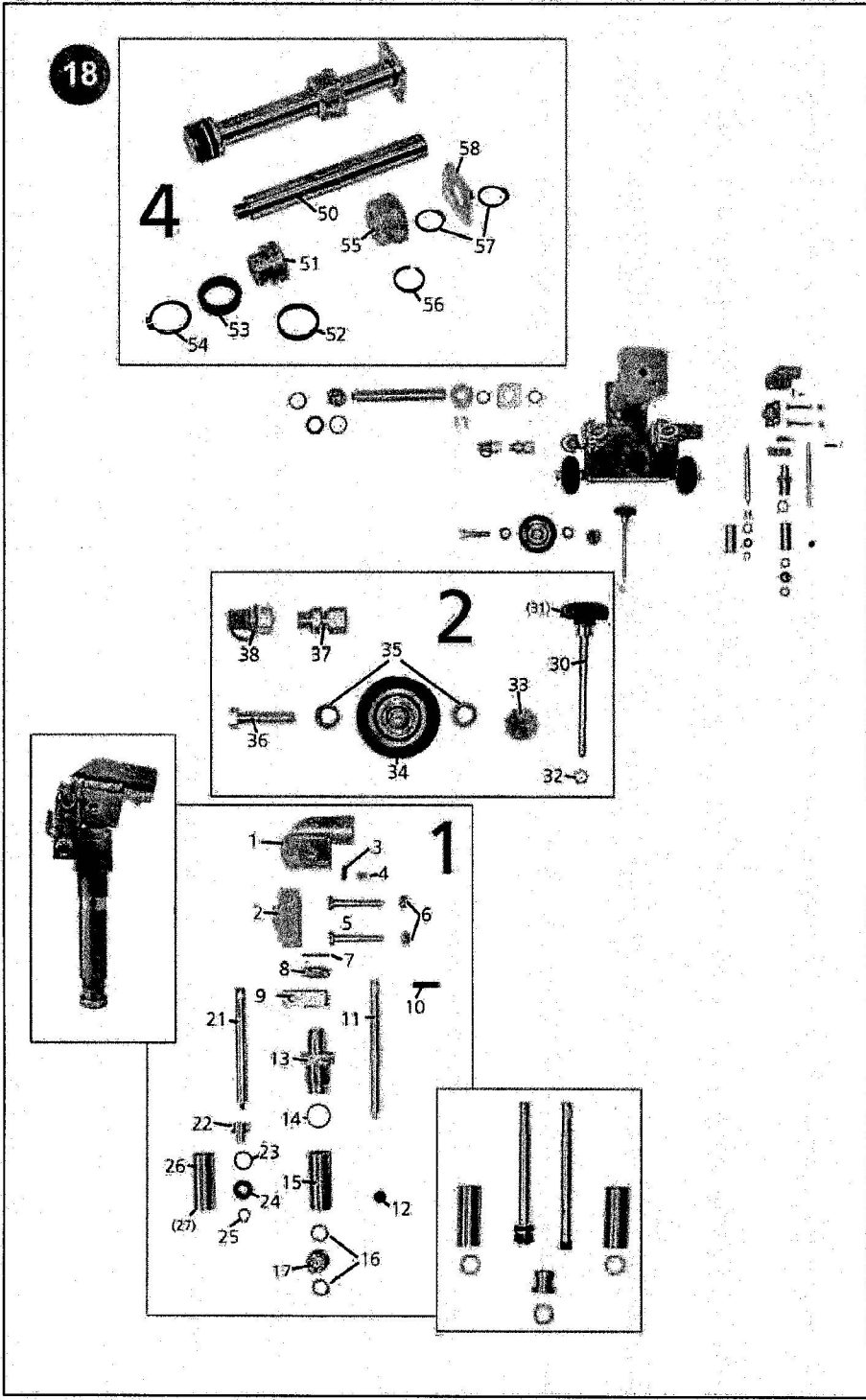
# Exploded View: 25t Toe Jack



## 25 TON HYDRAULIC JACKS PART LIST

ITEM	QTY	25T JACK	DESCRIPTION
01	1	28791	BODY
02	1	26638	COLUMN
03	1	28802	SPRING RING
04	1	28803	GUIDE
05	1	28789	TOE
06	1	60705	O-RING
07	1	60666	SEAL
08	1	28447	PLUG
09	1	60652	BS SEAL
12	1	60494	EXPANDER PLUG
13	4	60300	SCREW
14	1	28480	LEVER
15	1	28814	HANDLING TUBE
16	1	60174	BETA PIN
17	1	28808	SMALL ROD
18	2	28448	SHAFT
19	1	26668	SHAFT
20	3	60029	WASHER
21	3	60046	NUT
22	1	28508	PUMP BARREL
23	1	28800	SLEEVE
24	1	28511	VALVE BODY
25	1	60654	O-RING
26	1	28801	PISTON
27	1	60294	SEAL
28	1	60662	SEAL
29	2	60295	SEAL
30	3	60164	BALL
31	3	27047	SPRING
32	2	25627	STOP SCREW
33	2	30607	SHUTTLE
34	1	25631	RELIEF VALVE
35	1	27592	NOZZLE
36	1	60169	BALL
37	1	25633	SHUTTER
38	1	25632	SPRING
39	1	60602	SCREW
40	1	60660	O-RING
41	1	60171	SNAP RING

ITEM	QTY	25T JACK	DESCRIPTION
42	1	25635	KNOB
43	1	60603	SCREW
44	1	28517	WASHER
45	1	60669	SCREW
46	1	60663	SEAL
48	1	60651	VALVE
50	1	60671	SNAP RING
51	1	28573	FILTER
55	1	60225	SNAP RING
56	2	60838	SCREW
58	2	28084	SMALL LINK
59	1	28085	SPINDLE
60	2	26649	RAIL WHEEL
61	2	28809	SHAFT
62	2	60226	SNAP RING
63	2	26648	WASHER
65	1	30111	NOZZLE
66	1	30112	FILTER SUPPORT
67	1	30609	PIPE



Please supply with your order the correct part number, quantity required and description as well as the type of the jack and serial number. If a repair has to be carried out, please send only the defective parts. Thank you.

Spare parts, universal					
	Pos. Description	Qty	HTJ-6D / HTJ-10D	Qty	HTJ-25D
<b>Diagram 1:</b>					
1	Pump joint 1	1	951057100	1	951057100
2	Pump joint 2	1	951057200	1	951057200
3	Spring pressure ball	1	990061501	2	990061501
4	Nut for 3	1	990193010	2	990193010
5	Joint screw	2	990193009	4	990193009
6	Joint nut	2	990198001	4	990198001
7	Distance washer	1	990112001	2	990112001
8	Nut M18x1	1	951059200	2	951059200
9	Jointbox	1	951057300	2	951057300
10	Pin	1	990114001	2	990114001
11	Pump Ram NH	1	951059300	1	951059300
12	Ram seal	1	991005000	1	991005000
13	Screwed socket ram	1	991059100	2	991059100
14	O-Ring pump	1	991004002	2	991004002
15	Cylinder pump NH	1	951059400	1	951059400
16	Copper Seal	2	990176001	4	990176001
17	Safety-valve	1	991200520	2	991200520
21	SH-pump ram			1	952559300
22	SH-piston			1	952559500
23	SH-piston guide			1	991001251
24	SH-U-seal			1	991003251
25	SH-C-clip			1	990147008
26	SH-Cylinder pump			1	952559400
27	SH-Cylinder adapter	1	951058000	1	951058000

<b>Diagram 2:</b>					
30	Valve	1	951058000	1	951058000
31	Stargrip	1	990063100	1	990063100
32	O-ring valve	1	991004001	1	991004001
33	Oil screw	1	990055001	1	990055001
34	wheel			2	110521101
35	Wheel washer			4	990112001
36	Wheel screw			2	990193011
37	Stud coupling S/G-FL	1	991102007	1	991102007
	Stud coupling XR	1	991102006	1	991102006
38	Male hose coupler	1	080270001	1	080270001
<b>Diagram 3:</b>					
48	Lever pump	1	951057400	1	951057400

Spare parts specific					
Pos.	Description	Qty	HTJ-6D	HTJ-10D	HTJ-25D
<b>Diagram 3:</b>					
40	Pump /cylinder S/G-FLT	1	950620000	950620000	950620000
	Cylinder XR	1	991103045	991103100	991103250
41	Screw cylinder S/G-FLT	4	990191019	990179007	990179007
	Cylinder XR	1	990191022	990191023	990191025
42	Frame S/G-FLT	1	950610101	950610101	950610101
	Frame XR	1	950610101	950610101	950610101
43	Swiveling leg	2	950610201	950610201	950610201
44	C-Clip/Nut+washer leg	2	990147007	990147007	990147007
45	Lifting unit S/G-FLT	1	950630000	950630000	950630000
	Lifting unit XR	1	950630000	951130000	951130000
46	Screw lifting unit	1	990179008	990179006	990179001
47	Toe	1	950640000	951040000	952540000
48	Lever	1	991057400	991057400	991057400
<b>Diagram 4:</b>					
50	Piston rod	1	950650300	951050300	952550300
51	Piston	1	950650200	951050200	952550200
52	Piston guide	1	991001050	991001100	991001250
53	U-Seal piston	1	991003050	991003100	991003250
54	C-Clip piston	1	990147002	990147005	990147010
55	Piston head	1	950650100	991050100	952550100
56	Piston head guide	1	991002050	991002100	
57	C-Clip securing plate	1	990147006	990147002	
	Screw securing plate	1			990179005
58	Securing plate S/GFLT1	1	950550400	951050400	952550400

