

INSTRUCTION MANUAL REPAIR PARTS LIST

PORTABLE CRANE W/POWER UNIT 2 TON (1815 Kg) CAPACITY PART CODE H68061

WARNING

- | | | |
|--|---|--|
| 1. READ, STUDY, AND UNDERSTAND ALL WARNING LABELS AND OPERATING INSTRUCTIONS FURNISHED WITH THIS EQUIPMENT PRIOR TO USE. IF YOU DO NOT UNDERSTAND THE WARNINGS, CONTACT YOUR REPRESENTATIVE FOR CLARIFICATION. | 6. ADJUSTABLE LEGS MUST ALWAYS BE POSITIONED SO THE CENTER OF THE WHEELS EXTEND PAST THE CENTER OF THE LOAD. | 11. USE ONLY CHAINS OR SLINGS WITH A CAPACITY EQUAL TO OR GREATER THAN THAT OF THE CRANE. |
| 2. NEVER ALLOW UNSKILLED OR IMPROPERLY TRAINED PERSONNEL TO OPERATE THIS EQUIPMENT. | 7. BOTH LEGS MUST BE EXTENDED TO AN EQUAL LENGTH. NEVER OPERATE CRANE WITH ADJUSTABLE LEGS EXTENDED PAST THE LINE MARKED ON THE LEG. | 12. DO NOT STAND IN BOOM'S PATH OF TRAVEL. LOSS OF LOAD MAY CAUSE BOOM TO RISE SUDDENLY. |
| 3. THE CRANE MUST BE COMPLETELY AND PROPERLY ASSEMBLED AS OUTLINED IN THE INSTRUCTION MANUAL BEFORE USE. | 8. USE ONLY ON A HARD LEVEL SURFACE CAPABLE OF SUSTAINING THE LOAD. USE ON OTHER THAN HARD LEVEL SURFACE CAN RESULT IN CRANE INSTABILITY AND POSSIBLE LOSS OF LOAD. | 13. BOOM MUST BE LOWERED COMPLETELY BEFORE ADDING OIL TO THE HYDRAULIC UNIT'S RESERVOIR. |
| 4. THE HYDRAULIC UNIT MUST BE LOCATED CORRECTLY IN THE CLEVIS LOCATED ON MAST. THE RAM END OF THE HYDRAULIC UNIT MUST FULLY ENGAGE PIVOT CAP LOCATED ON BOOM. | 9. POSITION THE LOAD AS CLOSE TO THE GROUND AS POSSIBLE PRIOR TO TRANSPORTING IT. | 14. IT IS THE OWNER'S RESPONSIBILITY TO KEEP ALL WARNING LABELS AND INSTRUCTION LITERATURE LEGIBLE AND INTACT. REPLACEMENT LABELS AND LITERATURE ARE AVAILABLE FROM THE FACTORY. |
| 5. DO NOT EXCEED LOAD CAPACITIES SPECIFIED ON THE BOOM AND LEGS FOR EACH POSITION. | 10. DO NOT ALLOW LOAD TO SWING OR DROP SUDDENLY WHILE MOVING OR LOWERING. | 15. FAILURE TO HEED THESE WARNINGS MAY RESULT IN EQUIPMENT AND/OR PROPERTY DAMAGE AND/OR PERSONAL OR FATAL INJURY. |

OWNER'S RESPONSIBILITY

Operation. The owner and/or operator shall have an understanding of these operating instructions and warnings before operating the Crane. Warning information shall be emphasized and understood. If the user is not fluent in English, the instructions and warnings shall be read to and discussed with the operator in the operator's native language by the purchaser/owner, making sure that the operator comprehends its contents.

Maintenance. The Crane shall be maintained in accordance with instructions listed under "Maintenance."

Inspection

1. Visual inspection shall be made before each use of the Crane, checking for leaking hydraulic fluid, and damaged, loose or missing parts.
2. Each Crane, if subjected to an abnormal load or shock, shall be inspected immediately by an authorized Hein-Werner service center.
3. Owners and/or users should be aware that repair of this equipment may require specialized knowledge and facilities. It is recommended that an annual inspection of the Crane be made by an authorized service center and that any defective parts, decals or warning labels be replaced with genuine Hein-Werner parts. A list of authorized service centers is available upon request.

Damaged Equipment. Any Crane which appears to be damaged in any way, is found to be badly worn, or operates abnormally SHALL BE REMOVED FROM SERVICE until necessary repairs are made by an authorized service center.

ASSEMBLY

Refer to parts illustration for item numbers and detail of assembly methods.

1. Install wheels (item 21) to base frame (item 12) using bushings, bolts, lockwashers and hex nuts (items 28, 29, 30 and 31) as illustrated.
2. Attach mast (item 2) to base frame (item 12) using 2 bolts and nuts (items 15 and 26). Mast must lean towards the rear of the base frame as shown. Leave nuts finger tight.
3. Attach (2) struts (item 23) to mast with bolt and nut (items 4 and 26). Leave nut finger tight.
4. Attach struts to base frame using 2 each bolts and nuts (items 16 and 26). Note: Struts assemble to outside of base frame.
5. Tighten mast to base frame, strut to mast, and strut to base frame bolts.
6. Install hydraulic unit (item 1) to the mounting base (item 6) with 2 bolts and nuts (items 7 and 33).
7. Position hydraulic unit with base between mounting ears on mast, and attach using bolt and nut (items 5 and 25). Note that handle socket of hydraulic unit must face the front of the base frame as shown. Tighten nut. Lean hydraulic unit assembly back against mast.
8. Connect boom (item 8) to mast using bolt and nut (items 3 and 24). Tighten nut.

9. Hold boom and pivot hydraulic unit out away from mast, and position ram between mounting brackets on boom. Attach hydraulic unit to boom with bolt and nut (items 10 and 25). Tighten nut.
10. Slide boom extension (item 9) into boom, and secure in retracted position using bolt and nut (items 11 and 25).
11. Insert two base extension legs (item 17) into base frame, approximately half way. Secure using 2 bolts (item 13).
12. Attach chain and hook assembly (item 22) to boom extension by hooking link into slot. Chain can be installed at various lengths to accommodate lifting requirements.
13. Check all bolts and nuts for tightness, including those pre-assembled at the factory. Tighten where required.

MAINTENANCE

Check periodically to insure tightness of all bolts and nuts. Lubricate wheels and caster bearings as required to

keep them moving freely. Keep a light coat of oil on the hydraulic unit ram.

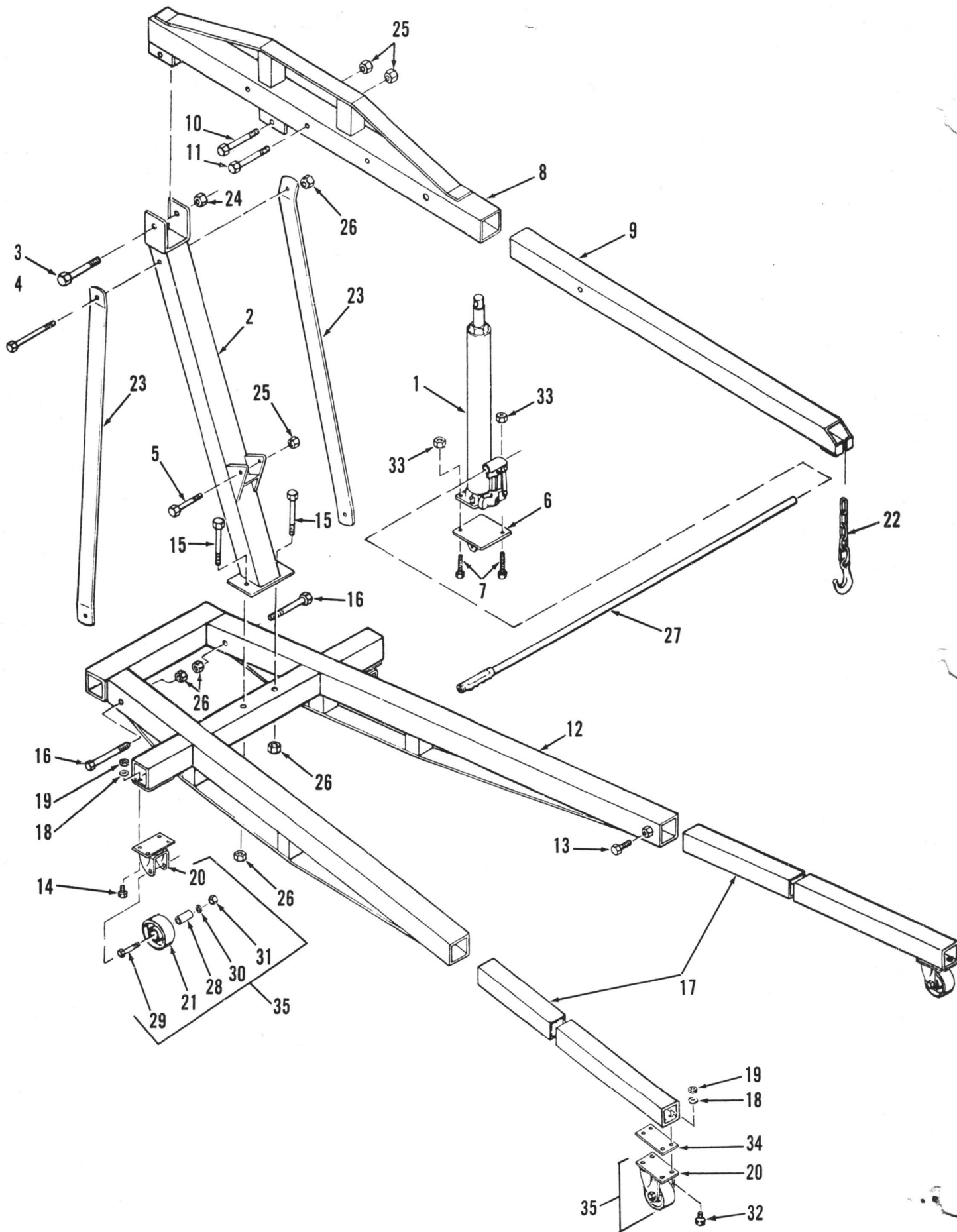
OPERATION

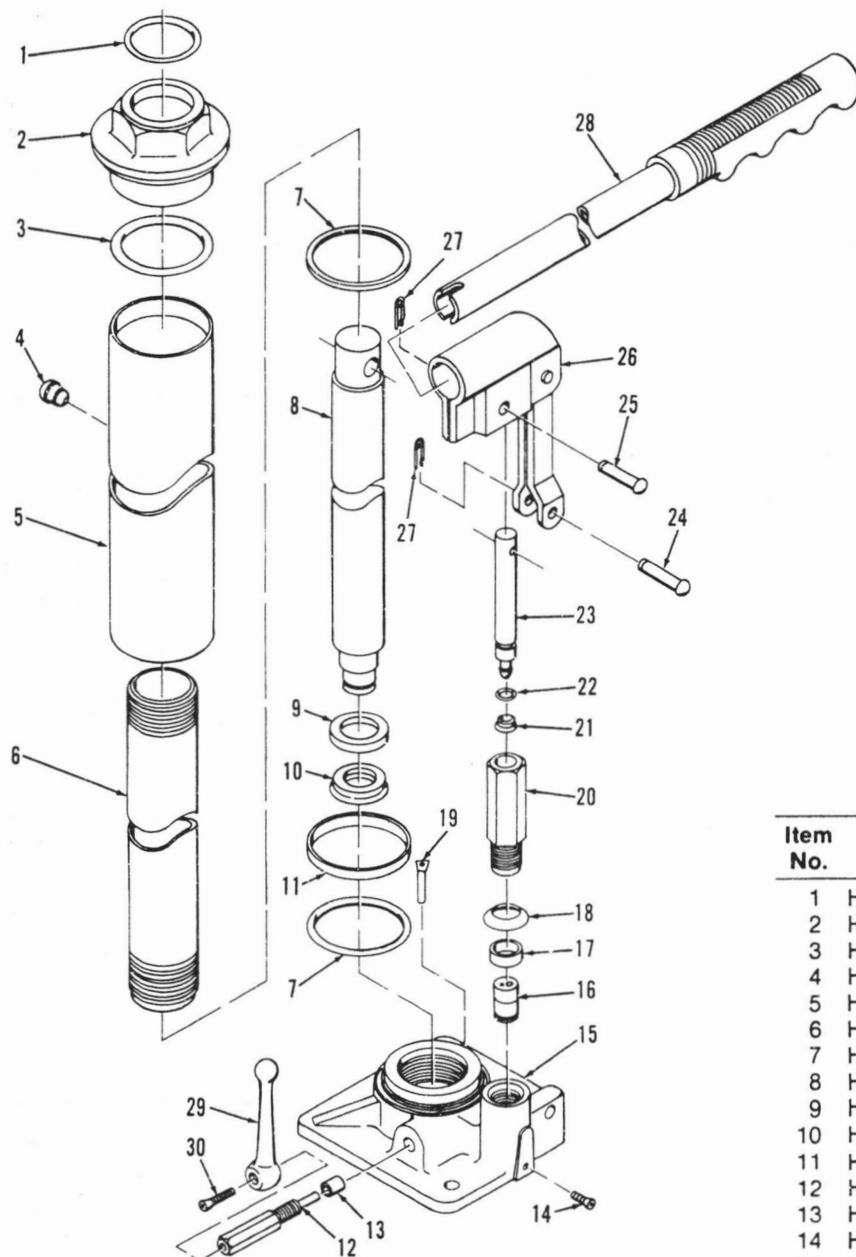
1. Adjust boom length to reach the load. Always use the shortest amount of extension possible for maximum stability.
2. Extend legs as necessary to position the wheels past the center of the load. It is suggested that the legs be extended to maximum allowable length as indicated by the mark on the leg whenever possible, as this provides the most stable condition.
3. To raise, turn release lever fully clockwise, insert handle in handle socket, and pump handle.
4. To lower, turn release lever counterclockwise slowly. Lowering speed is controlled by the amount lever is opened.
5. When transporting a load, always lower the boom to position the load as close to the floor as possible.

H68061 PARTS LIST (2 TON CRANE W/POWER UNIT)

Item No.	Part Code	Description	Qty. Required
1	H6847600	Hydraulic Unit	1
2	H6867000	Mast	1
3	H6867100	Bolt 3/4-10 x 4-11/16 (Grade #5)	1
4	H6867200	Bolt 1/2-13 x 4-1/4 (Grade #5)	1
5	H6867300	Bolt 5/8-11 x 3-5/8 (Grade #5)	1
6	H6867400	Hydraulic Unit Mtg. Base	1
7	H6874600	Bolt 3/8-24 x 1 (Grade #5)	2
8	H6867500	Boom Assy.	1
9	H6867600	Boom Extension Assy.	1
10	H6867700	Bolt 5/8-11 x 3 (Grade #5)	1
11	H6867800	Bolt 5/8-11 x 3-3/4 (Grade #5)	1
12	H6867900	Frame Assy.	1
13	H6866100	Bolt 1/2-13 x 7/8	2
14	H6868000	Bolt 5/16-18 x 3/4 (Grade #5)	8
15	H6868100	Bolt 1/2-13 x 3-5/8 (Grade #5)	2
16	H6868200	Bolt 1/2-13 x 3-7/8 (Grade #5)	2
17	H6868300	Base Ext. Leg	2
18	H6868400	Lockwasher 5/16	16

Item No.	Part Code	Description	Qty. Required
19	H6868500	Hex Nut 5/16-18	16
20	H6868600	Caster Bracket	4
21	H6866400	Wheel	4
22	H6868700	Hook & Chain Assy.	1
23	H6868800	Strut	2
24	H6868900	Hex Nut 3/4-10	1
25	H6866800	Hex Nut 5/8-11	3
26	H6866700	Hex Nut 1/2-13	7
27	H6866900	Handle	1
28	H6861800	Bushing	4
29	H6861500	Bolt 3/8-16 x 2-3/8 (Grade #5)	4
30	H6861600	Lockwasher 3/8	4
31	H6861700	Hex Nut 3/8	4
32	H6874700	Bolt 5/16-18 x 1 (Grade #5)	8
33	H6874800	Hex Nut 3/8-24	2
34	H6876300	SPACER BAR	1
35	H6894800	Caster Assy.	4
Includes items 20, 21, 28, 29, 30 and 31			





TRI-CITY HYDRAULIC JACK SERVICE

4628 N. Florida Avenue
Tampa, Florida 33603-3700
(813) 232-1280

Item No.	Part Code	Description	Qty. Required
1	H6878000	"O" Ring (Top Nut)	1
2	H6878100	Top Nut	1
3	H6878200	"O" Ring	1
4	H6953000	Filler Plug	1
5	H6878300	Reservoir	1
6	H6878400	Ram Cylinder	1
7	H6878500	Washer	2
8	H6878600	Ram Plunger	1
9	H6878700	Back-Up, Washer	1
10	H6878800	U-Cup (Ram)	1
11	H6878900	Back-Up, Washer	1
12	H6876000	Release Valve	1
13	H6876100	Packing	1
14	H6812300	Valve Plug	1
15	H6876500	Base	1
16	H6879000	Hydraulic Cartridge	1
17	H6954700	Packing (Pump)	1
18	H6954600	Washer	1
19	H6941700	Filter	1
20	H6876900	Pump Cylinder	1
21	H6877000	Piston Cup Assy.	1
22	H6877100	"O" Ring	1
23	H6877200	Pump Piston	1
24	H6877300	Pin	1
25	H6951000	Pin (Pump Piston)	1
26	H6877500	Handle Socket	1
27	H6951200	Retaining Pin	2
28	H6866900	Handle	1
29	H6877800	Release Valve Handle	1
30	H6877900	Screw	1
		H6857200 Warning Decal (Not shown)	1
		H6848100 Repair Kit (Not shown)	

H68476 PARTS LIST (8 TON HYD. UNIT FOR 2 TON CRANE)

**HEIN-WERNER WINNER SERIES
90-DAY LIMITED WARRANTY**

Coverage

Hein-Werner Corporation warrants to the consumer that this product will be free from defects in material and workmanship for a period of ninety (90) days from the date of purchase. Hein-Werner does not authorize any party, including its authorized distributors, to offer any other warranty on behalf of Hein-Werner. Upon expiration of the warranty period, Hein-Werner shall have no further liability related to the product, except on warranty claims made during the warranty period.

THIS WARRANTY IS OFFERED IN LIEU OF ANY OTHER EXPRESS WARRANTY; AND, EXCEPT TO THE EXTENT PROHIBITED BY APPLICABLE LAW, THE DURATION OF ALL IMPLIED WARRANTIES, INCLUDING BUT NOT LIMITED TO THE IMPLIED WARRANTIES OF MERCHANTABILITY AND FITNESS FOR A PARTICULAR PURPOSE, IS LIMITED TO THE DURATION OF THIS WARRANTY.

Some states do not allow limitations on how long an implied warranty lasts, so the above limitation may not apply to you. This warranty gives you specific legal rights, and you may also have other rights which vary from state to state.

What is Not Covered

This warranty does not extend to any product subjected to misuse, neglect, accident, or in-warranty repair by anyone except Hein-Werner.

Remedy for Defective Product

Upon receipt of any defective product, Hein-Werner will, at its option, repair or replace the defective product at its expense, provided that the purchaser of that product has followed the procedure for obtaining warranty performance set forth below. The product so repaired or used as a replacement will be shipped to the purchaser of the defective product with transportation charges prepaid to any destination in the continental United States (transportation charges on shipments to Alaska or Hawaii will be paid only to the nearest port of export).

THE PURCHASER'S REMEDIES FOR A DEFECTIVE PRODUCT, TO THE EXTENT PERMITTED BY APPLICABLE LAW, ARE LIMITED TO THE REMEDY PROVIDED BY THIS WARRANTY; AND, TO THE EXTENT ENFORCEABLE UNDER APPLICABLE LAW, HEIN-WERNER SHALL IN NO EVENT BE LIABLE FOR CONSEQUENTIAL, INCIDENTAL OR SPECIAL DAMAGES ARISING OUT OF THE USE OF, OR INABILITY TO USE, THE PRODUCT, WHETHER BASED ON BREACH OF THIS WARRANTY, HEIN-WERNER'S NEGLIGENCE OR OTHER TORT, OR ON ANY THEORY OF STRICT LIABILITY.

Some states do not allow the exclusion or limitation of consequential or incidental damages, so the above limitations may not apply to you.

Procedure for Obtaining Warranty Performance

As soon as any defect in a product becomes known, the purchaser of such a product must, within the 90-day warranty period, return the defective component part, or if required, complete product to Hein-Werner with a copy of original invoice, transportation charges prepaid to the following address:

Hein-Werner Corporation
Warranty Service Department
1005 Perkins Avenue
Waukesha, Wisconsin 53186