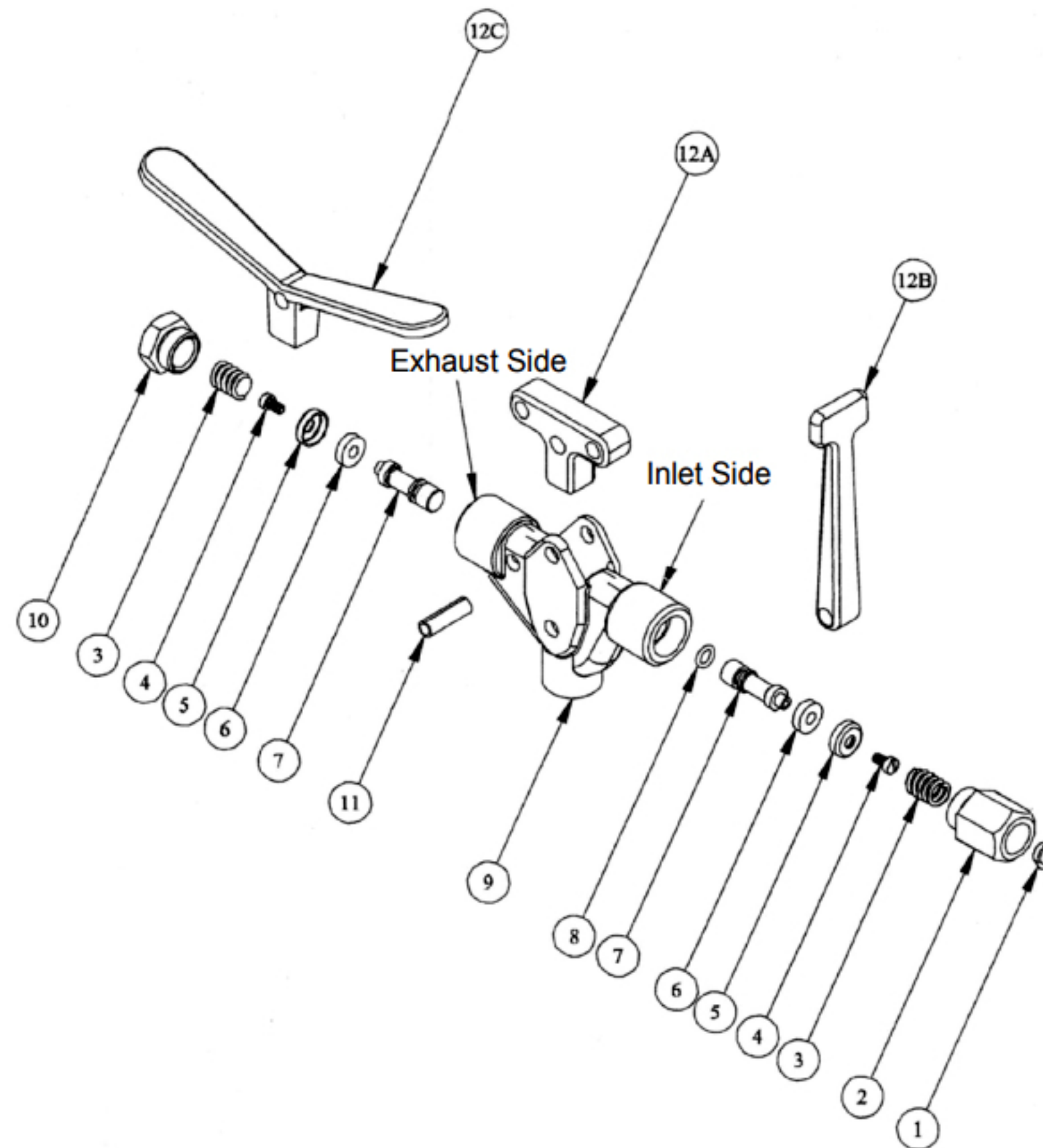


239647 Air Valve



1	1-312-91004	Screen	1
2	1-274-12001	Adapter	1
3	1-233-12001	Spring	2
4	0-202-10601	Screw	2
5	1-312-91003	Cup	2
6	1-390-10006	Seal	2
7	1-312-91002	Spool	2
8	0-390-00005	O-ring	1
9	4-312-91001	Body	1
10	1-275-21004	Plug	1
11	0-235-21009	Roll Pin	1
12	Note (2)	Handle	1

Notes:

1. Complete Valve Assembly, with Handle:

2-312-01005	Valve Assembly, Tee Handle
2-312-01006	Valve Assembly, Long Handle
2-312-01007	Valve Assembly, Winged Handle

2. Handle Part Numbers:

12A	1-232-20053	Tee Handle
12B	1-232-20034	Long Handle
12C	1-232-20052	Winged Handle

Air Valve Cleaning Instructions

Occasionally pieces of scale or rust from the airline will become lodged under the rubber seats of the air valve causing air leakage. This leakage is easily detected since lift will raise slowly when you connect the air line to the quick coupler inlet even though the valve lever has not been touched. If this occurs, the Inlet Side of the valve needs cleaning. The lift may also lower slowly when you disconnect the airline from the quick coupler even though the valve lever has not been touched. If this occurs, either the Inlet Side or both sides of the valve needs cleaning. To clean, refer to Figure 5 and follow these instructions: A. Remove the adapter (2) from the Inlet Side of the air control valve. Inspect screen (1) for foreign particles and clean as required. B. Remove the spool (7) from the body by pushing on spool (7) (from center toward the outside of valve) with a piece of stiff wire or nail. C. Carefully examine the valve seal (6) for any scale, dirt or foreign matter. If foreign matter is embedded in the valve seal (6), remove the screw (4) and cup (5) from the end of spool (7) and clean the seal (6), turn over the seal and reassemble. D. Lubricate the spool (7) with light chassis grease. E. Reassemble the valve in this order: First, insert the spool (7). Make sure that the spool with the O-Ring (8) is reassembled on the Inlet Side. Second, insert spring (3). Third, assemble adapter (2) into inlet side and plug (10) into exhaust side of body (9). The valve should now operate like new.