

INSTRUCTION MANUAL REPAIR PARTS LIST

TELESCOPING AIR/HYDRAULIC TRUCK JACK 22 TON (19958 kg) CAPACITY PART CODE 68051



WARNING



1. This is a lifting device only. Do not move or dolly the vehicle while on the jack. The load must be supported immediately by other appropriate means.
2. Do not overload. Overloading can cause damage to or failure of the jack.
3. Lift only on areas of the vehicle as specified by the vehicle manufacturer.
4. This jack is designed for use only on hard level surfaces capable of sustaining the load. Use on other than hard level surfaces can result in jack instability and possible loss of load.
5. Center load on saddle prior to lifting vehicle. Do not lift on ram retracting collar. Off-center loads and loads lifted while jack is not level may damage the jack or cause loss of load, personal injury, or property damage.
6. It is the owner's responsibility to keep warning decals legible and intact. Replacement decals may be obtained from authorized service centers or the factory. See parts list for decal part code.
7. Study, understand, and follow all instructions provided with this jack prior to operation.
8. Failure to heed these warnings may result in loss of load, damage to jack, and/or failure resulting in personal injury or property damage.

OWNER'S RESPONSIBILITY

Operation. The owner and/or operator shall have an understanding of these operating instructions and warnings before operating the jack. Warning information shall be emphasized and understood. If the user is not fluent in English, the instructions and warnings shall be read to and discussed with the operator in the operator's native language by the purchaser/owner, making sure that the operator comprehends its contents.

Maintenance. The jack shall be maintained in accordance with instructions listed under "Maintenance."

Inspection

1. Visual inspection shall be made before each use of the jack, checking for leaking hydraulic fluid, and damaged, loose or missing parts.
2. Each jack, if subjected to an abnormal load or shock, shall be inspected immediately by an authorized Hein-Werner service center.
3. Owners and/or users should be aware that repair of this equipment may require specialized knowledge and facilities. It is recommended that an annual inspection of the jack be made by an authorized Hein-Werner service center and that any defective parts, decals or warning labels be replaced with genuine Hein-Werner parts. A list of authorized service centers is available from Hein-Werner.
4. Check for nicked ram or external oil leaks from the cylinder which may signal pending problems.

Damaged Jacks. Any jack which appears to be damaged in any way, is found to be badly worn, or operates abnormally SHALL BE REMOVED FROM SERVICE until necessary repairs are made by an authorized Hein-Werner service center.

ASSEMBLY INSTRUCTIONS (See Page 3) INSTRUCTIONS BEFORE USE

1. Remove filler screw and check oil level. With ram in down position, it should be just up to the hole. Fill if necessary with clean Hein-Werner hydraulic jack oil. Never use brake fluid.
2. Occasionally jacks become "airbound" during transit. To remove air from hydraulic system, open release valve by turning knob on top of handle counter-clockwise. With air supply connected, activate air valve for 10-15 seconds. Close release valve and check for normal operation.
3. Check air supply pressure. System must have at least 100 PSI and 10 C.F.M. to obtain rated capacity.



WARNING



**THESE JACKS ARE NOT DESIGNED
TO OPERATE ON THEIR SIDES.**

OPERATING INSTRUCTIONS

1. **Lifting** - Attach air supply to control valve and close release valve. Position jack where desired and adjust extension screw if necessary. Activate air/hydraulic pump by pressing on control valve until desired height is reached. Jack will hold load even if air supply is removed.



WARNING

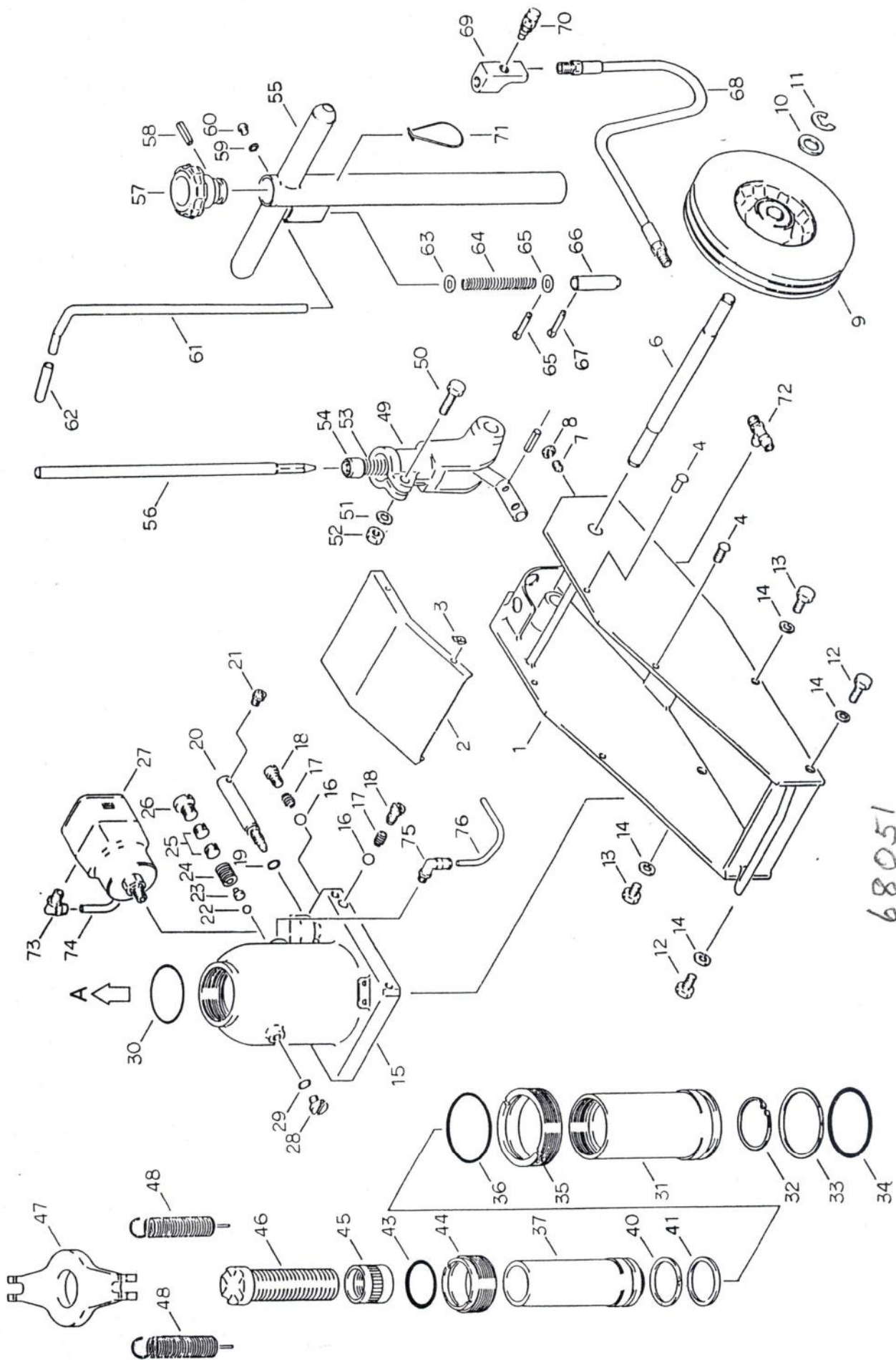


**USE JACK FOR LIFTING ONLY.
ALWAYS SUPPORT VEHICLE BY
OTHER APPROPRIATE MEANS.**

2. **Lowering** - Ram will lower when release valve is opened. Release is metered, so lowering speed is controlled by the amount release valve is opened.

MAINTENANCE

1. Regularly check oil level. Use only genuine Hein-Werner hydraulic jack oil - never use alcohol or hydraulic brake fluid.
2. Check in-line air filter regularly for blockage. Filter unit is replaceable. See part list for part number.
3. Oil leaking from the air exhaust is usually due to tipping jack over, and does not indicate a defect.



22 Ton Air/Hydraulic Telescopic Truck Jack

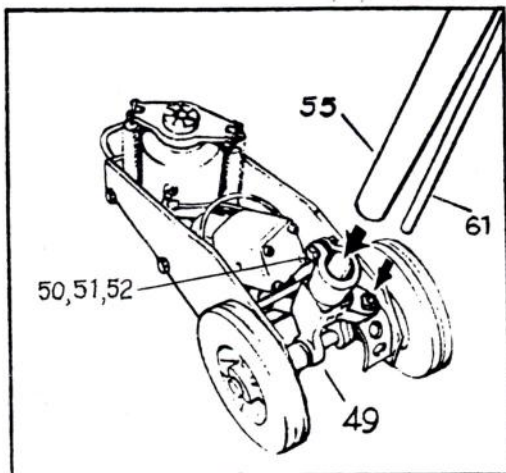
22 Ton Air/Hydraulic Telescopic Truck Jack

| Item No. | Parts Code | Description | Qty. Required |
|----------|------------|---------------------|---------------|
| 1 | 68240 | Frame Assy. | 1 |
| 2 | 68241 | Cover | 1 |
| 3 | 68242 | Nut, Speed | 4 |
| 4 | 68243 | Screw | 4 |
| 6 | 68244 | Shaft | 1 |
| 7 | 68245 | Screw | 1 |
| 8 | 68246 | Nut | 1 |
| 9 | 68247 | Wheel | 2 |
| 10 | 68248 | Collar | 2 |
| 11 | 68249 | E-Ring | 2 |
| 12 | 68250 | Bolt | 2 |
| 13 | 68251 | Bolt | 2 |
| 14 | 68252 | Washer, Spring | 4 |
| 15 | 68253 | Body | 1 |
| 16 | 68254 | Ball | 2 |
| 17 | 68255 | Spring | 2 |
| 18 | 68256 | Plug | 2 |
| 19 | 68257* | O-Ring | 1 |
| 20 | 68258 | Pin-Release | 1 |
| 21 | 68259 | Screw | 1 |
| 22 | 68260 | Ball, Safety Valve | 1 |
| 23 | 68261 | Safety Valve Seat | 1 |
| 24 | 68262 | Safety Valve Spring | 1 |
| 25 | 68263 | Safety Valve Screw | 2 |
| 26 | 68264 | Safety Valve Plug | 1 |
| 27 | 68265 | Pump, Air | 1 |
| 28 | 68266 | Plug | 1 |
| 29 | 68267* | O-Ring | 1 |
| 31 | 68268 | 2nd Ram | 1 |
| 32 | 68269 | Snap Ring | 1 |
| 33 | 68270* | Back-Up Ring | 1 |
| 34 | 68271* | O-Ring | 1 |
| 35 | 68272 | 2nd Nut | 1 |
| 36 | 68273* | O-Ring | 1 |
| 37 | 68274 | 1st Ram | 1 |
| 40 | 68275* | Back-Up Ring | 1 |
| 41 | 68276* | Packing | 1 |
| 43 | 68277* | O-Ring | 1 |
| 44 | 68278 | Nut | 1 |
| 45 | 68279 | Sleeve | 1 |
| 46 | 68280 | Screw | 1 |
| 47 | 68281 | Hanger | 1 |

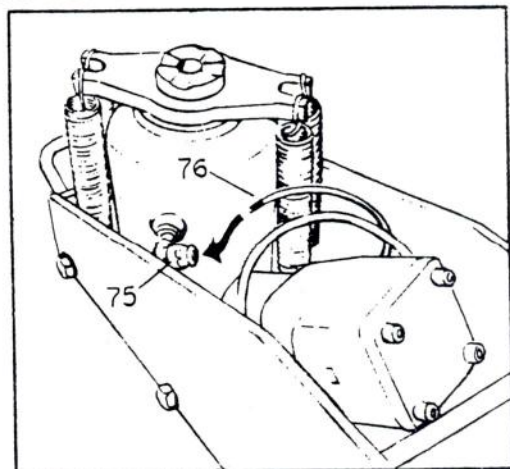
| Item No. | Parts Code | Description | Qty. Required |
|----------|------------|---|---------------|
| 48 | 68282 | Spring | 4 |
| 49 | 68283 | Socket, Handle | 1 |
| 50 | 68284 | Bolt | 1 |
| 51 | 68285 | Washer | 1 |
| 52 | 68286 | Nut | 1 |
| 53 | 68287 | Spring | 1 |
| 54 | 68288 | Universal Joint | 1 |
| 55 | 68289 | Handle | 1 |
| 56 | 68290 | Rod, Release | 1 |
| 57 | 68291 | Knob | 1 |
| 58 | 68292 | Pin, Spring | 2 |
| 59 | 68293 | Washer, Spring | 1 |
| 60 | 68294 | Screw | 1 |
| 61 | 68295 | Lever | 1 |
| 62 | 68296 | Tube | 1 |
| 63 | 68297 | Washer | 2 |
| 64 | 68298 | Spring | 1 |
| 65 | 68299 | Pin, Split | 1 |
| 66 | 68300 | Pin, Lock | 1 |
| 67 | 68301 | Pin, Split | 1 |
| 68 | 68302 | Hose, Air | 1 |
| 69 | 68303 | Body, Valve | 1 |
| 70 | 68304 | Air Valve | 1 |
| 71 | 68305 | Ring | 1 |
| 72 | 68306 | Tee | 1 |
| 73 | 68307 | Elbow | 1 |
| 74 | 68308 | Hose | 1 |
| 75 | 68309 | Elbow | 1 |
| 76 | 68310 | Hose | 1 |
| 77 | 68311 | Repair Kit-Jack (Not shown) | 1 |
| 78 | 68313 | Ram Assy. 1st Includes Items 37, 40, 41, 45, & 46 (Not shown) | 1 |
| 79 | 68314 | Ram Assy. 2nd Includes Items 31, 32, 33, & 34 (Not shown) | 1 |
| 80 | 68315 | Handle Assy. (Not shown) | 1 |
| 81 | 68516 | Product/Warning Decal - English (Not shown), | 1 |
| | 68517 | Product/Warning Decal - French (Not shown) | 1 |

*Denotes 68420 Repair Kit

ASSEMBLY INSTRUCTIONS



1. Simultaneously insert handle (55) and release lever (61) into handle socket (49). When fully seated, tighten clamping bolt, nut and lockwasher (50, 51, 52).



2. Remove plug from oil return elbow (75). Insert return tube (76) into elbow, and tighten elbow fitting.

| Problem | Jack will not lift the load | Jack will not lower load | Pump acts erratically |
|---------|-----------------------------|--------------------------|-----------------------|
|---------|-----------------------------|--------------------------|-----------------------|

TROUBLESHOOTING

Cause — Solution

| | | | |
|---|---|---|---|
| ✓ | | | 1. Release valve must be closed. |
| ✓ | | | 2. Low air pressure. System pressure must be at least 100 PSI to obtain rated capacity. |
| | ✓ | | 3. Release valve must be opened. |
| ✓ | | | 4. In-Line Air Filter may be plugged. Check and replace if necessary. |
| | | ✓ | 5. Squirt a few drops of oil in the air intake and operate at no load for a few seconds. This is usually not necessary if your in-line lubricator is operating correctly. |

If the above procedures do not remedy the problem — the jack will require service and should be taken to an Authorized Hein-Werner Service Center for repair.

HEIN-WERNER WINNER SERIES 90-DAY LIMITED WARRANTY

Coverage

Hein-Werner Corporation warrants to the consumer that this jack will be free from defects in material and workmanship for a period of ninety (90) days from the date of purchase. Hein-Werner does not authorize any party, including its authorized distributors, to offer any other warranty on behalf of Hein-Werner. Upon expiration of the warranty period, Hein-Werner shall have no further liability related to the jack, except on warranty claims made during the warranty period.

THIS WARRANTY IS OFFERED IN LIEU OF ANY OTHER EXPRESS WARRANTY; AND, EXCEPT TO THE EXTENT PROHIBITED BY APPLICABLE LAW, THE DURATION OF ALL IMPLIED WARRANTIES, INCLUDING BUT NOT LIMITED TO THE IMPLIED WARRANTIES OF MERCHANTABILITY AND FITNESS FOR A PARTICULAR PURPOSE, IS LIMITED TO THE DURATION OF THIS WARRANTY.

Some states do not allow limitations on how long an implied warranty lasts, so the above limitation may not apply to you. This warranty gives you specific legal rights, and you may also have other rights which vary from state to state.

What is Not Covered

This warranty does not extend to any jack subjected to misuse, neglect, accident, or in-warranty repair by anyone except Hein-Werner.

Remedy for Defective Jack

Upon receipt of any defective jack, Hein-Werner will, at its option, repair or replace the defective jack at its expense, provided that the purchaser of that jack has followed the procedure for obtaining warranty performance set forth below. The jack so repaired or used as a replacement will be shipped to the purchaser of the defective jack, with transportation charges prepaid to any destination in the continental United States (transportation charges on shipments to Alaska or Hawaii will be paid only to the nearest port of export).

THE PURCHASER'S REMEDIES FOR A DEFECTIVE JACK, TO THE EXTENT PERMITTED BY APPLICABLE LAW, ARE LIMITED TO THE REMEDY PROVIDED BY THIS WARRANTY; AND, TO THE EXTENT ENFORCEABLE UNDER APPLICABLE LAW, HEIN-WERNER SHALL IN NO EVENT BE LIABLE FOR CONSEQUENTIAL, INCIDENTAL OR SPECIAL DAMAGES ARISING OUT OF THE USE OF, OR INABILITY TO USE, THE JACK, WHETHER BASED ON BREACH OF THIS WARRANTY, HEIN-WERNER'S NEGLIGENCE OR OTHER TORT, OR ON ANY THEORY OF STRICT LIABILITY.

Some states do not allow the exclusion or limitation of consequential or incidental damages, so the above limitations may not apply to you.

Procedure for Obtaining Warranty Performance

As soon as any defect in a jack becomes known, the purchaser of such a jack must, within the 90-day warranty period, return the defective component part, or if required, complete jack to Hein-Werner with a copy of original invoice, transportation charges prepaid to the following address:

Hein-Werner Corporation
Warranty Service Department
1005 Perkins Avenue
Waukesha, Wisconsin 53186

Hein-Werner
CORPORATION

1005 Perkins Avenue Waukesha, WI 53186 414/542-6611
Hein-Werner of Canada Ltd.
55 Mills Road Ajax, Ontario, Canada L1S 2H2 416/683-6100