

# OPERATOR'S MANUAL

5TON / 10TON  
LONG CHASSIS SERVICE JACK  
( NORMAL AND LONG ARM MODELS )



**⚠** Read this manual and follow all the safety rules and operating instructions before using this product.

## SPECIFICATIONS OF NORMAL ARM MODELS

Lifting Capacity (Ton)	Lifting Height (mm)	Max.Height (mm)	Min.Height (mm)	Gross Weight (Kgs)	Net Weight (Kgs)	Package Size (cm)
5TON	410	560	150	101	87	157X42X29
10TON	400	560	160	145	129	167X52X33

## SPECIFICATIONS OF LONG ARM MODELS

Lifting Capacity (Ton)	Lifting Height (mm)	Max.Height (mm)	Min.Height (mm)	Gross Weight (Kgs)	Net Weight (Kgs)	Package Size (cm)
5TON	535	685	150	103	89	157X42X29
10TON	525	685	160	149	133	167X52X33

## WARNING!!

1. This is a lifting device ONLY. Do not move or dolly the vehicle while on the jack.
2. Position this jack to ONLY lift on the areas of the vehicle as specified by the vehicle manufacturer.
3. After lifting the vehicle, ALWAYS support the load with appropriately rated vehicle support stands BEFORE working on the vehicle.
4. Do not overload this jack beyond its rated capacity. Overloading can cause damage to or failure of the jack.
5. This jack is designed ONLY for use on hard level surfaces capable of sustaining the load. Use on other than hard level surfaces can result in jack instability and possible loss of load.
6. Center load on jack saddle BEFORE lifting vehicle. Off-center loads and loads lifted when the jack is not level can cause loss of load or damage to the jack.
7. Study, understand and follow all instructions in this manual BEFORE operating the jack.
8. Failure to read these warnings may result in loss of load, damage to the jack and/or jack failure resulting in personal injury or property damage.

## OPERATING INSTRUCTIONS

Important: Sometimes during shipment and handling, air gets into the hydraulic system, causing poor lifting performance. Before initial operation, purge any air from the system by fully opening release (Turn handle knob(3-8) counter-clockwise). Then, while holding the saddle down, pump pedal(3-2) rapidly several times.

### Raising jack

1. Turn handle knob(3-8) clockwise until resistance is felt to close release valve. Do not over-tighten.
2. Place jack directly under object to be lifted. Make sure saddle takes up weight firmly and centrally. Check positioning under slight load to confirm jack or load will not slip.
3. Raise jack by pumping handle until desired height is reached. After lifting, secure load by appropriate means. Do not use jack as the only means of support.

### Lowering jack

1. Slowly turn handle knob(3-8) counter-clockwise. Speed of descent is controlled by amount release valve is turned.

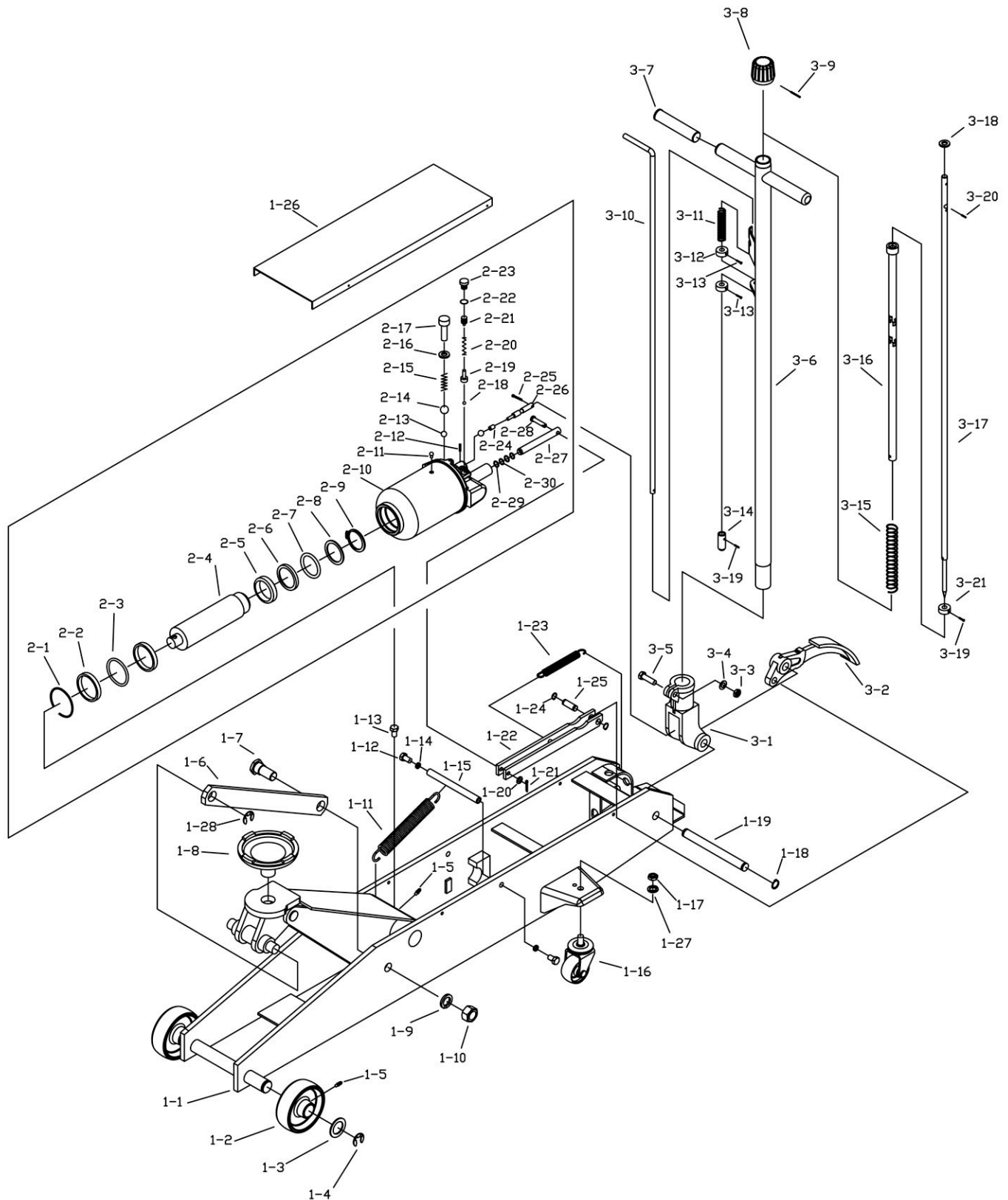
# MAINTENANCE

## Checking hydraulic oil level

1. Open release valve (Turn handle knob(3-8) counter-clockwise) and push ram to its lowest position.
2. Remove filler plug.
3. Fill the clean hydraulic jack oil. Do not use hydraulic brake fluid.
4. Reinstall filler plug.

## Lubrication

1. Add lubricating oil to all moving parts as needed.



# PARTS LIST

Part No.	Description	Q'ty	Part No.	Description	Q'ty
1-1	frame	1	2-13	steel ball $\Phi$ 6	1
1-2	front wheel	2	2-14	steel ball $\Phi$ 9	1
1-3	washer	2	2-15	spring	1
1-4	snap ring	2	2-16	copper washer	1
1-5	Grease Fitting	3	2-17	bolt M12X20	1
1-6	rod link	2	2-18	steel ball	1
1-7	bolt	2	2-19	valve seat	1
1-8	saddle	1	2-20	spring	1
1-9	lock washer	2	2-21	screw	1
1-10	nut	2	2-22	o-ring	1
1-11	spring	1	2-23	safety valve screw	1
1-12	bolt M10X25	2	2-24	seals	1
1-13	bolt M10X16	1	2-25	pin	1
1-14	snap ring	2	2-26	release valve rod	1
1-15	shaft	1	2-27	cylinder pump plunger	1
1-16	rear wheel	2	2-28	pin	1
1-17	nut	2	2-29	o-ring	1
1-18	snap ring	2	2-30	nylong gasket	2
1-19	shaft	1	3-1	handle socket	1
1-20	washer	1	3-2	pedal	1
1-21	pin	1	3-3	Nut M10	1
1-22	connection bar	1	3-4	washer	1
1-23	spring	1	3-5	bolt M10X35	1
1-24	snap ring	2	3-6	handle	1
1-25	shaft	1	3-7	handle sleeve	2
1-26	cover board	1	3-8	knob	1
1-27	lock washer	2	3-9	pin	1
1-28	snap ring	2	3-10	control rod	1
2-1	snap ring	2	3-11	spring	1
2-2	washer	1	3-12	washer	2
2-3	o-ring	1	3-13	screw	2
2-4	piston rod	1	3-14	rod joint	1
2-5	piston ring	1	3-15	spring	1
2-6	sealing washer	1	3-16	universal joint ass'y	1
2-7	o-ring	1	3-17	convey rod	1
2-8	o-ring retainer	1	3-18	washer	1
2-9	snap ring	1	3-19	pin	2
2-10	oil cylinder ass'y	1	3-20	pin	1
2-11	oil filler plug	1	3-21	washer	1
2-12	pin	2			

Note: Parts 1-27 and 1-28 are only available on 10ton models.