



GRAY MANUFACTURING
Company, Inc. • St. Joseph, Missouri

A tradition of quality since 1952

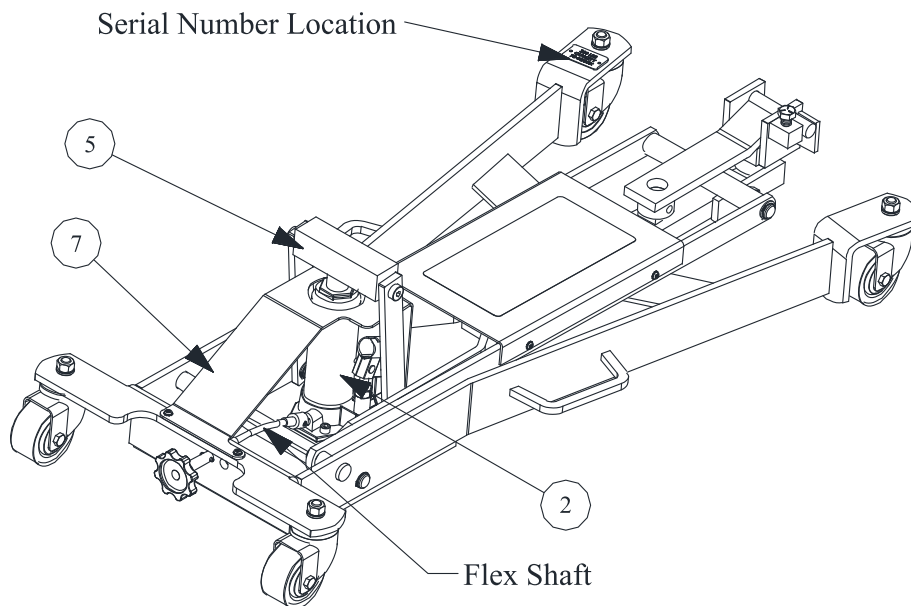
3501 S. Leonard Rd.
St. Joseph, MO 64503 U.S.A.
Phone: (800) 821-7320
Fax: (816) 233-7251
E-mail: gray@grayusa.com
grayusa.com

Power Unit Replacement Instructions

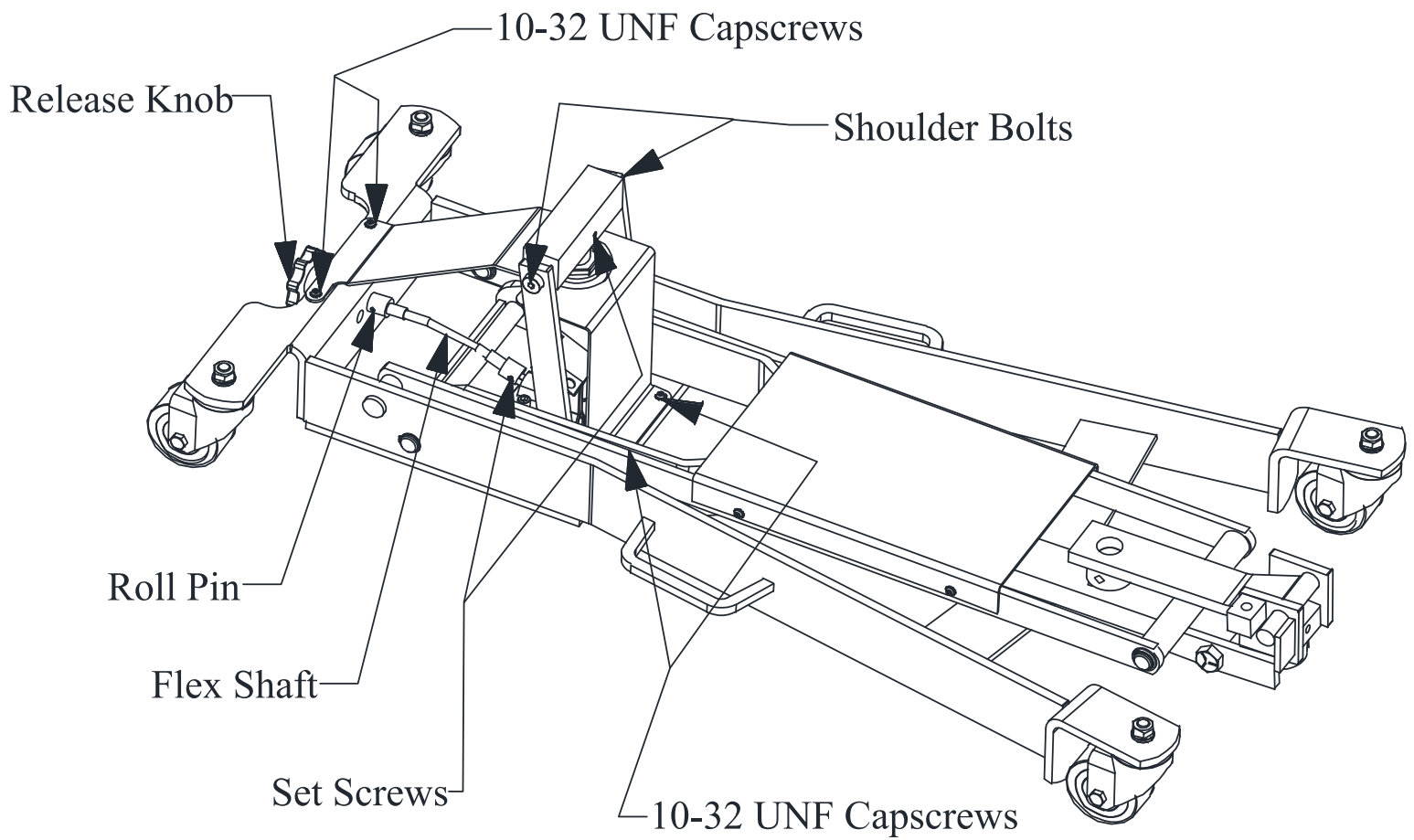
TCJ-500

WARNING: Remove the jack from service before attempting to replace the power unit.

Follow the instructions below in order to replace the power unit. Note the construction of the jack to aid in the replacement, taking pictures if helpful. Keep the parts and hardware as some of them will be reused in the installation of the new power unit.



ITEM	QTY	PART NUMBER	DESCRIPTION
1	1	876-04110	Power Unit Adapter Plate
2	1	353-40130	Power Unit, 4-Ton Bottle Jack, Assembly (Style May Vary)
3	2	201-11103	Capscrew, Socket Head, 5/16 -24UNF, Steel, 7/8" Long
4	1	201-31012	Set Screw, Socket Head, 1/4 - 28UNF, Steel, Cup Point, 1/2" Long
5	1	876-04096	Cross Bar
6	1	670-10290	Information Placard, Operating Instructions, TCJ-500
7	1	876-04104	Power Unit Cover
8	1	203-01105	Nut, Hex, 5/16-24UNF, Regular, Steel, Plated

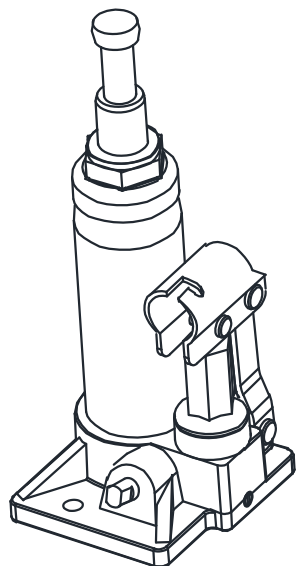


Remove Power Unit

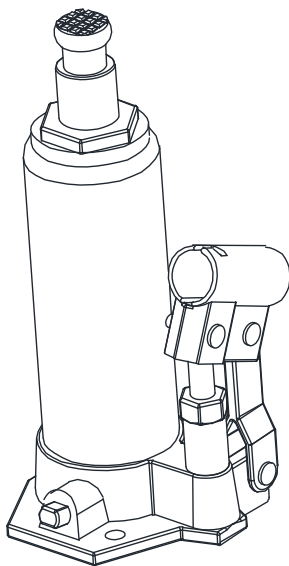
1. Remove the cross bar and power unit cover from the jack.
2. Disconnect the flex shaft from the power unit and, if necessary, from the jack or power unit cover.
3. Remove the power unit.

Determine Serial Number and Power Unit Style

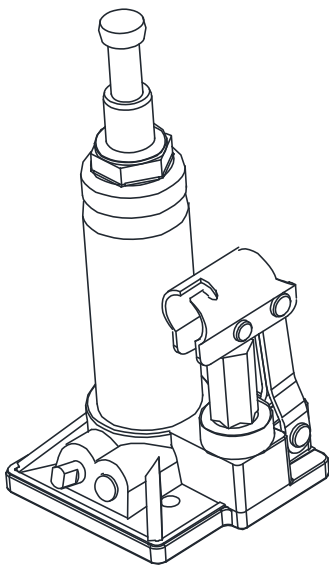
It is necessary to determine the serial number of the jack and the style of power unit that will be used in the replacement. The jack and power unit each can have multiple mounting hole patterns. The jack's hole pattern will be specific to the serial number range and the power unit's hole location will vary with the style of power unit used. After determining the serial number and power unit style using the below information, use the section of these instructions that correspond to the serial number as a guide in the replacement of the power unit. Note: Power unit A is no longer available.



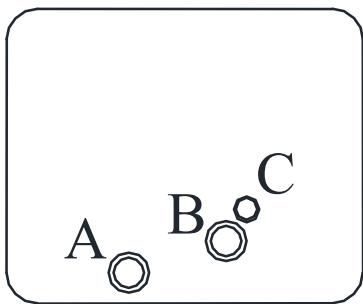
Power Unit A



Power Unit B

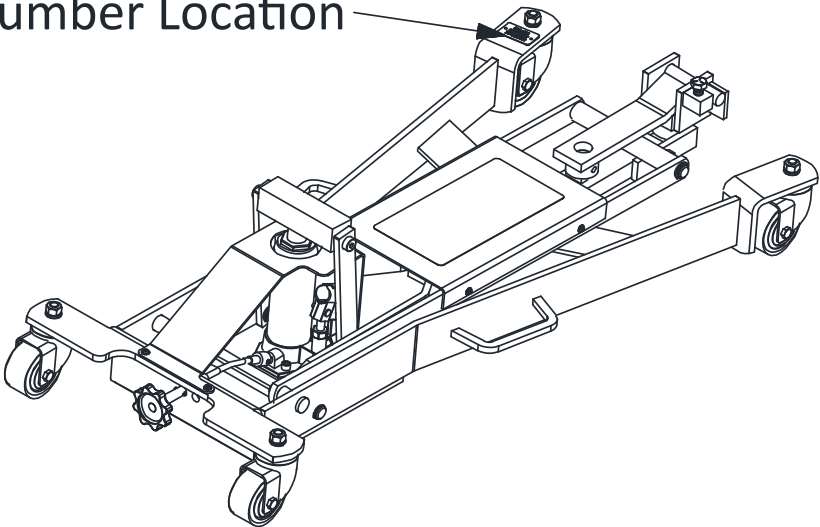


Power Unit C



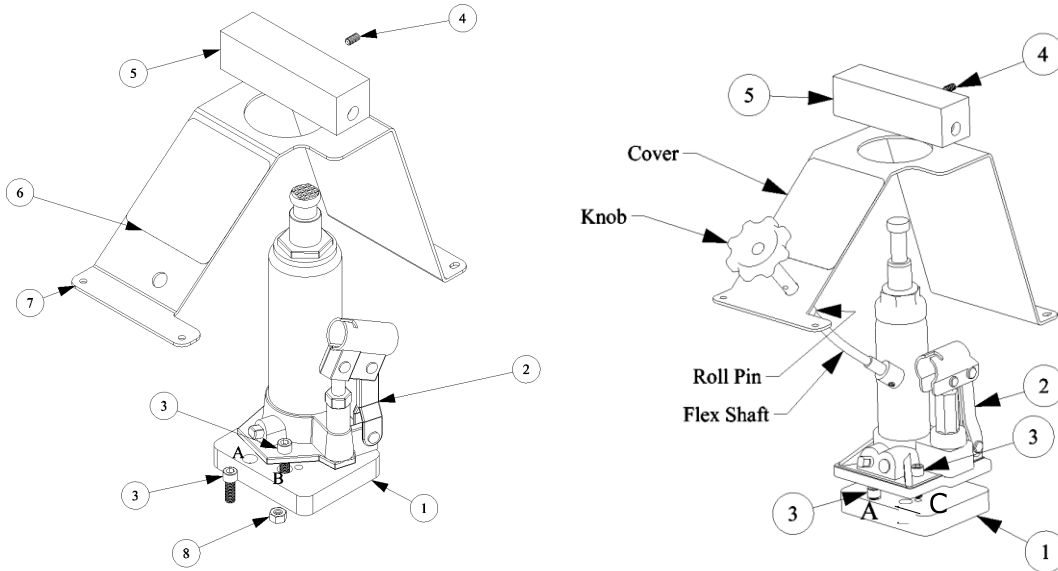
Adapter Plate Location Labels

Serial Number Location



Serial Numbers 76-000001 Through 76-003141

This jack should have a mounting hole for power unit A. The new power unit cover and cross bar that came with the replacement kit will need to be installed on this jack.



If power unit B is to be installed, first mount the adapter plate to the power unit using a capscrew and nut in location B and hand tighten only. Next, swing the power unit to uncover location A on the adapter plate and mount the adapter plate to the jack. Finally, square up the power unit and tighten the hardware.

If power unit C is to be installed, mount the adapter plate to the jack using location A and then mount the power unit to the adapter plate using location C.

Serial Numbers 76-003142 Through 76-003695

This jack should have a mounting hole for power unit B.

If power unit B is to be installed, mount it directly to the jack.

If power unit C is to be installed, first mount the adapter plate to the jack using location B and then mount the power unit to the adapter plate using location C.

Serial Numbers 76-003696 and Above

This jack should have mounting holes for power units B and C. The power unit can be mounted directly to its corresponding location on the jack. Ensure the jack is centered on the jack and properly connects to the cross bar.

Install Power Unit

1. Install the power unit according to the instructions given for the jack's serial number. Ensure the power unit is correctly oriented on the jack.
2. Install the flex shaft on the power unit first, and then route the flex shaft to its location on the jack and install the release knob. If the flex shaft does not fit the jack correctly, the knob may need to be placed on the power unit cover.
3. Install the appropriate power unit cover. If the flex shaft could not route correctly to the jack's frame, install it on the power unit cover.
4. Install the cross bar and connect the power unit to the cross bar using the set screw.
5. Ensure all hardware is correctly installed and tightened.
6. Raise and lower the jack to make sure everything is functioning correctly before putting the jack back into service.