

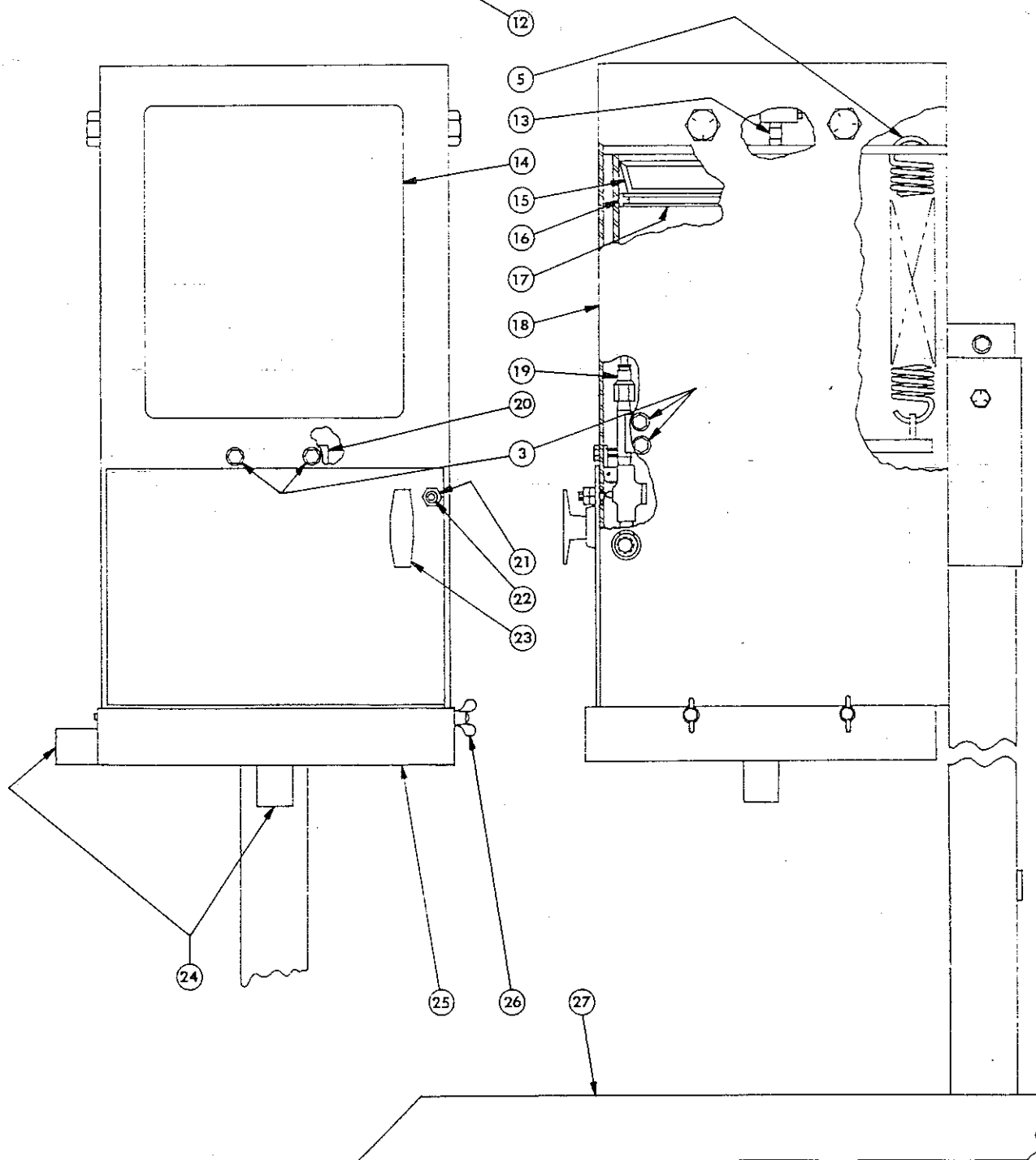
# QUICKPAC™

## QP-50

### CONTAINER CRUSHER

SERIAL# 65-001000 UP TO 65-00194

## PARTS LIST






**Professional  
Service  
Equipment**

## QP-50

Parts List      Serial # 65-001000 up to 65-001948

**All Prices Subject to Tax & Freight**

ITEM	PART NUMBER	PART DESCRIPTION	QTY
1	200-31416	Capscrew, 1/2-13, 3 1/2" Lg	1
2	203-01403	Hex Nut, 1/2-13, Self Locking	1
3	202-01103	Screw 5/16-18, 5/8" Long	6
4	859-04039	Spring Retainer	2
5	233-07004	Spring, 1 11/16 OD., 9" Long	2
6	315-00005	Muffler	1
7	312-01010	Exhaust Valve	1
8	274-14002	Male Adapter	1
9	200-31711	Capscrew, 3/4-10, 2 1/4" Long	4
10	203-01705	Nut, 3/4-10, Self Locking	4
11	8082-30024	Tubing, 17" Long	1
12	865-02003	Cylinder Weldment	1
13	275-02001	Nipple	1
14	670-00154	Identification Placard	1
15	391-05007	Packing	1
16	390-16001	Wiper Ring, Half, 12" Dia	2
17	865-02006	Piston Weldment	1
18	865-02001	Crushing Chamber Weldment	1
19	859-01001	Valve Assembly	1
20	865-04009	Rod Guide 	1
21	203-11204	Hex Jam Nut, 7/16-14	1
22	201-31207	Set Screw, Special	1
23	232-20119	Vise Action T-Handle	1
24	275-24001	Plug, 3/4-14 NPT	2
25	865-02005	Tray Weldment	1
26	202-01215	Wing Screw	2
27	859-02009	Base Weldment	1

390-21010 filter in drain

865-01002 Spring repair kit

3501 S. Leonard Rd.

P.O. Box 728

St. Joseph, MO U.S.A. 64502

1-800-821-7320

(816) 233-6121

FAX (816) 233-7251

or (816) 387-8157

www.grayusa.com

## **OIL FILTER CRUSHERS TROUBLE SHOOTING**

### **QP-50, QP-100, QP-160**

#### **PROBLEM: WILL NOT CRUSH FILTERS**

Possible Solutions:

- Not enough PSI. PSI must be around 120 for crusher to work effectively.
- Check cylinder, airline, and air valve for leaks. Repair any leaks.
- Exhaust valve on top of unit is dirty or bad. Take apart and clean valve diaphragm or replace if needed.
- Set screw on door is not actuating control valve. Adjust set screw.
- Crushing filters with steel pipe on the inside. This unit will not crush this type of filter.

#### **PROBLEM: RAM WILL NOT RETRACT/DOOR WILL NOT OPEN**

Possible Solutions:

- Exhaust valve on top of unit is dirty or bad. Clean or replace if needed.
- Oil filters are jammed inside the unit. On the QP-50 you must remove the cylinder from the top of the machine. To do this, remove the 4 bolts and nuts on top of the unit. Access can then be made to the inside of the chamber. On the QP-100 & QP-160 access can be made by removing the top from the stand and then removing the back cover.

#### **PROBLEM: OIL SQUIRTS OUT DOOR HENGES**

Possible Solutions:

- Filter may have tipped over inside crusher or may be lying sideways.
- Filters are being crushed too quickly causing oil not to drain and clog up.

#### **PROBLEM: AIR IS LEAKING**

Possible Solutions:

- Set screws on door is not actuating control valve. Adjust set screw.
- Exhaust valve on top of unit is loose or dirty. Tighten 4 bolts on exhaust valve or replace exhaust valve.



GRAY AUTOMOTIVE PRODUCTS CO. /

IN MISSOURI 816-233-6121

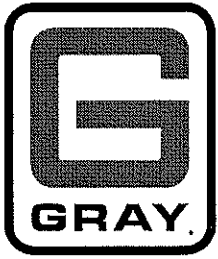
/ P.O. BOX 728 / ST. JOSEPH, MISSOURI 64502

TOLL FREE 1-800-821-7320

REPLACEMENT OF PISTON WELDMENT ON MODEL QP-50

Lay unit on its back on the floor. Disconnect air line tubing (Item #11) which is held into the male adapter (Item #8) by a plastic push fitting. Remove the 4 capscrews (Item #9) and pull the cylinder weldment (Item #12) out of the crushing chamber weldment (Item #18). (Be careful with air line tubing) Disconnect the 2 springs (Item #5) and remove the piston weldment (Item #17). Reuse the 12" packing (Item #15) and the 2 piece wiper ring (Item # 16) on the new piston weldment. Make sure the 12" packing and the inside of the cylinder weldment are well lubricated and free of rust and scratches. Reassemble the unit in the opposite order it was disassembled. (The air line tubing must be routed through the crushing chamber weldment again to reattach it to the male connector.)

If you have any questions please contact Gray Automotive's Customer Service department at 800-821-7320.

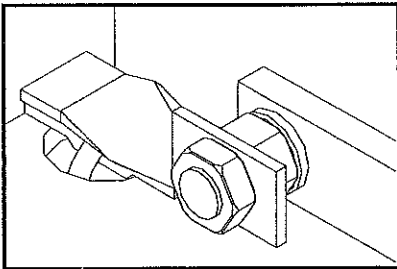


# QP-50

## Spring Repair Procedure

0-670-90237

1. **IMPORTANT:** Detach air supply line from QP-50 before beginning this repair procedure.
2. Remove the nut and bolt from the stand post and lower the crushing module from the working position to the lowered shipping position in which the module will be resting on the shipping stop tab.  
**CAUTION:** The crushing module weighs 210 lbs. and we recommend using a shop crane or lift truck to perform the lowering. **DO NOT** remove the 5/16-inch screw from top of the post.
3. Disconnect the black hose from the exhaust valve.
4. Remove the 4 bolts at the top of the QP-50.
5. Carefully tip entire unit forward and rest it on a wood block.
6. Slide power unit out and position upright.
7. **REPLACE BOTH SPRINGS.** Remove broken pieces of spring and unbroken spring.
8. Hook **new springs** into place.
9. Use the spring repair tool to pull the one spring high enough to slide the spring retainer bracket into place. Be sure that the spring retainer bracket is centered and securely holding the full load of the spring.
10. **Install the other spring by repeating step 9.**
11. Slide power unit back into place with the angled corners facing the front.
12. Tip entire unit back to an upright position.
13. Reinstall the 4 bolts to secure the power unit.
14. Place the spring stops on the bolts closest to the springs so that the springs are covered.
15. Secure spring stops with jam nuts.

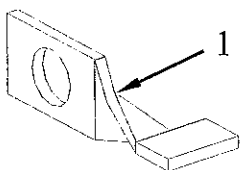


## QP-50

### Spring Repair Kit

pt # 8865-01002

ITEM	QTY	PART NUMBER	DESCRIPTION
1	2	2-865-04026	Spring Stop
2	2	0-203-11701	Nut, Hex, Jam, 3/4-10 UNC
3	2	1-233-07004	Spring, Extension, 1 11/16 OD, 9" Long
4	1	1-670-60119	Spring Tool



2  
(Not Shown)

