

## Professional Service Equipment

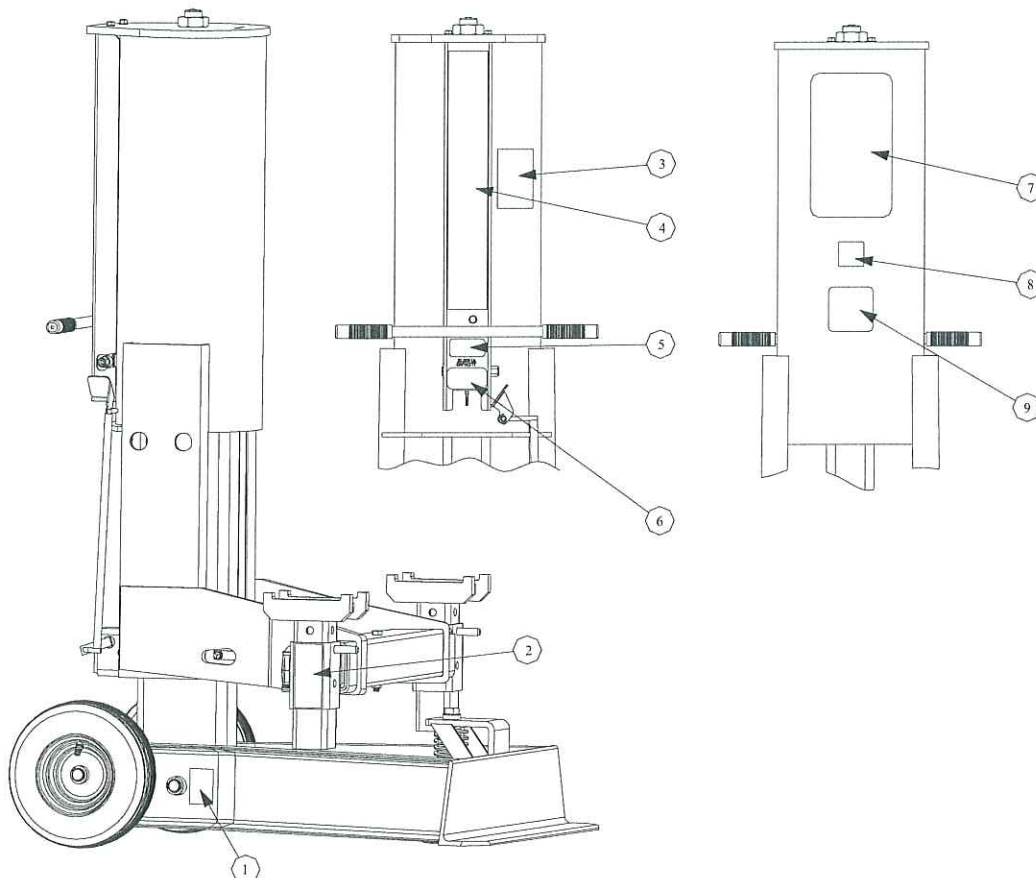


3501 S. Leonard Rd.  
P.O. Box 728  
St. Joseph, Missouri 64502  
U.S.A.  
Toll Free: (800) 821-7320  
Phone: (816) 233-6121  
Fax: (816) 233-7251  
Email: [gray@grayusa.com](mailto:gray@grayusa.com)  
[www.grayusa.com](http://www.grayusa.com)

# Parts List

## KL-20

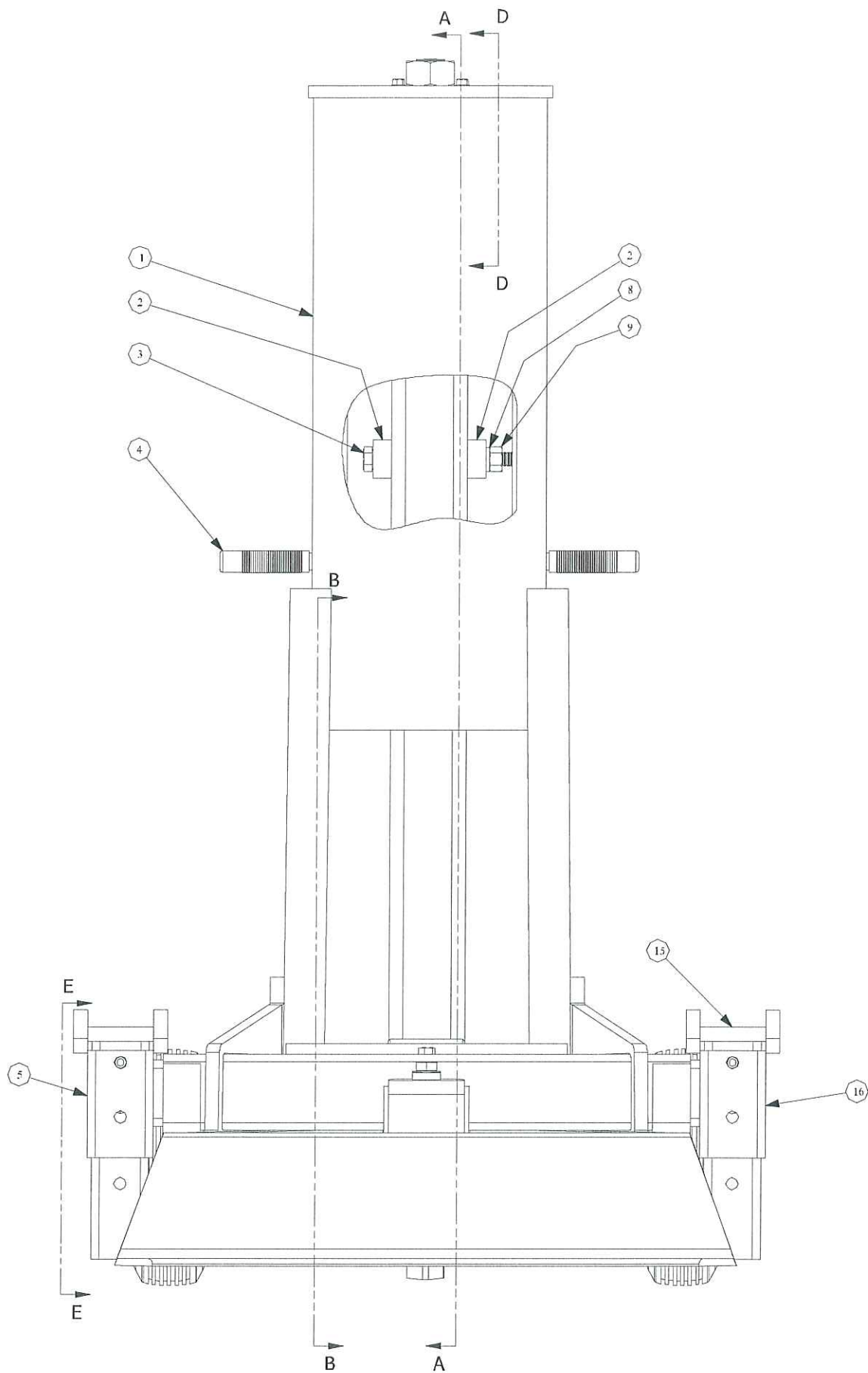
Item	Qty	Part Number	Description
1	2	670-10396	Information Placard, Warning Label, KL-20 Strut Pin Removal
2	2	670-10397	Information Placard, Warning Label, KL-20
3	1	670-10400	Information Placard, Strut, KL-20
4	1	670-10393	Information Placard, Instructions, Warning, KL-20
5	1	670-10399	Information Placard, Capacity, 20,000 LBS.
6	1	670-10013	Information Placard, Operating Instructions
7	1	670-00285	Identification Placard, KL-20, with Logo
8	1	670-10176	Information Placard, Multi-Language Notice
9	1	670-10398	Information Placard, Lubrication & Tire Inflation Instructions, KL-20



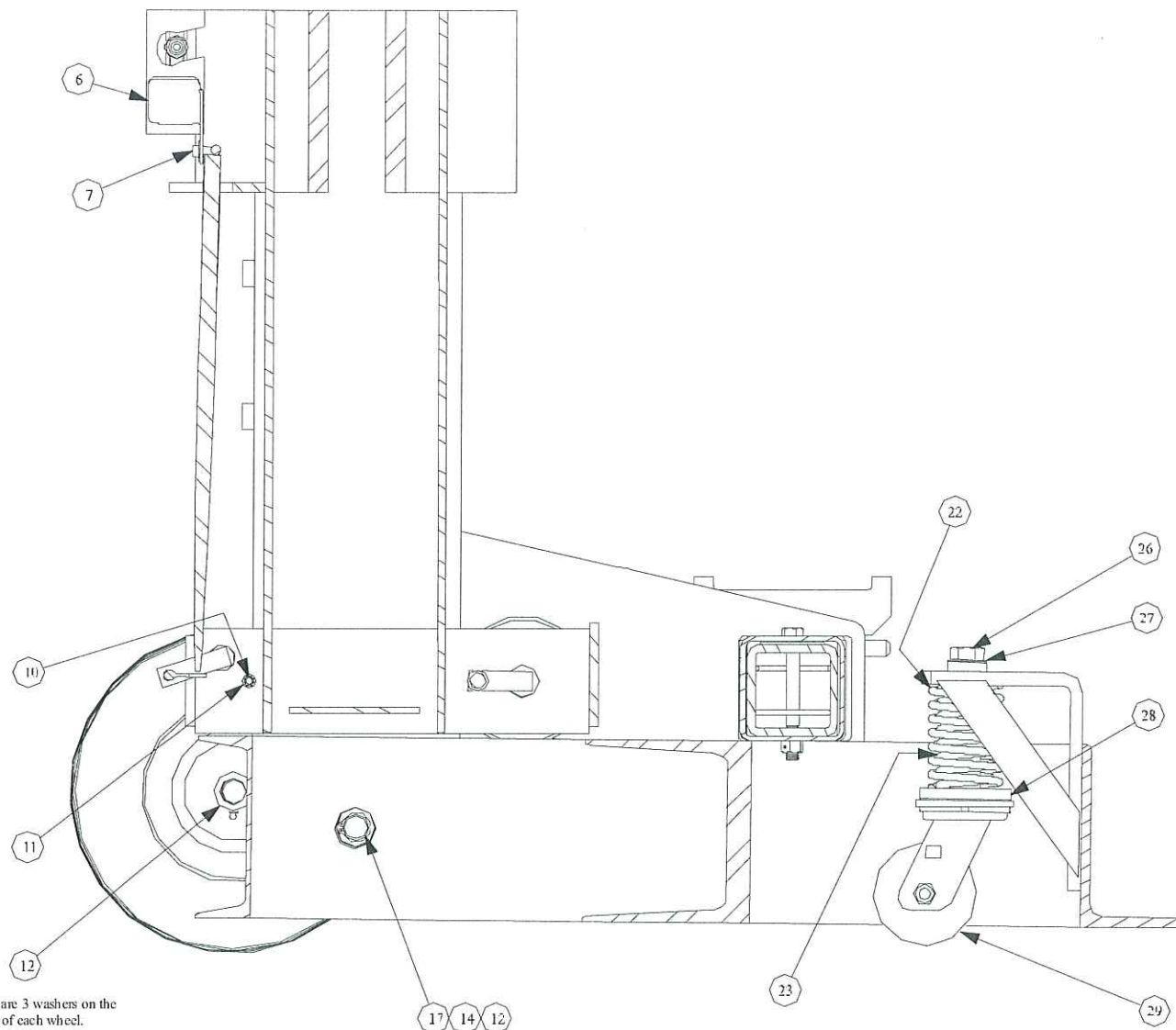
Item	Qty	Part Number	Description
1	1	930-02002	Top Weldment
2	2	930-04053	Upstop Block, KL-20
3	2	202-01715	Capscrew, Special, 3/4 - 10UNC, Steel, Plated, Grade 8, 7.500" Long
4	2	232-20001	Hand Grip, 7/8" Dia. X 5" Long
5	1	930-02008	Table Extension Weldment, R.H.
6	1	800-04001	Safety Catch Hinge
7	2	203-51200	Nut, 3/8, PALNUT, PW-375012
8	2	204-11700	Washer, Lock, Split Type, 3/4, Medium, Steel, Plated
9	2	203-01701	Nut, Hex, 3/4 - 10UNC, Regular, Steel, Plated
10	2	205-01010	Rivet, Round Head, 1/4 Dia., Steel, Plated, 3 3/4" Long
11	2	203-51002	Nut, 1/4 PALNUT, PS250085, Zinc Plated
12	10	204-01902	Washer, Flat, 1" X 14 Ga., Machinery Bushing, (Narrow Rim)
13	2	480-02002	Wheel, Pneumatic, 3.50 X 6, 1" Hub Bore
14	4	230-13004	Retaining Ring, External, 1" Dia., Heavy Duty
15	2	930-02007	Saddle Weldment
16	1	930-02009	Table Extension Weldment, L.H.
17	1	930-04041	Pin, 1" OD w/ Grooves
18	1	202-01235	Capscrew, Hex Head, Flange Lock, 3/8 - 16UNC, Grade 5, Plated, 3/4" Long
19	1	930-02003	Roller Shaft Weldment
20	2	232-20005	Handle Grip, 5/8 ID x 3-1/2" Long
21	1	930-02005	Base Weldment
22	1	233-16001	Spring, Compression, 2 29/32 O.D. X 5.000" Long
23	1	233-15005	Spring, Compression, 2 1/4 O.D. X 5.000" Long
24	2	801-04001	Saddle Pin
25	3	203-01403	Nut, Hex, 1/2-13, Steel, Plated, Self Locking
26	1	200-31708	Capscrew, Hex Head, 3/4-10UNC, Steel, Grade 5, Plated, 1 1/2" Long
27	1	204-01711	Washer, Special, 1 1/2 O.D., 49/64 I.D., 1/16 Thick
28	1	870-02009	Caster Extension Weldment
29	1	480-1103	Caster, Swivel Stem, Ø4.000 Phenolic Wheel <b>4 Bolts</b>
30	2	441-13006	Bearing, Cylindrical, 1 1/4 I.D. X 1 1/2 O.D., 1 1/4 Long
31	1	480-00036	Roller Wheel, Ø5.00 X 4.050" Long
32	1	200-31422	Capscrew, Hex Head, 1/2-13UNC, Steel, Grade 5, Plated, 4 1/2" Long
33	1	201-31312	Set Screw, Socket Head, 1/2-13UNC, 1/2" Long, Cup Point, Steel, Plated
34	1	203-62005	Nut, Hex, Special, 1 1/2 - 12UNF, Steel
35	2	203-01206	Nut, Hex, Flange Lock, 3/8-16UNC, Plated
36	1	275-11001	Elbow, Street, 1/4 NPT, 90°, 150# Maleable Iron
37	1	275-01042	Nipple, 1/4, 24 7/8" Long, Schedule 40, ASTM A 120
38	1	930-02010	Valve Cover Weldment
39	1	930-01004	Strut Assembly
40	1	200-31207	Capscrew, Hex Head, 3/8-16UNC, Steel, Grade 5, Plated, 1 1/4" Long
41	1	204-11202	Washer, Lock, Split Type, 3/8 Med., Steel, Plated
42	1	312-01006	Valve, Air, 3-Way, Long Handle
43	1	930-02004	Release Rod Weldment
44	2	441-59012	Bearing, Plain, Phenolic Wear Pad
45	4	204-01403	Washer, Flat, 1/2, Type A, Wide, Steel, Plated
46	1	930-02006	Piston Weldment
47	1	390-11127	Wear Ring, 2 7/8 I.D. X 3 1/8 O.D. X .500 Long
48	2	230-11000	Retaining Ring, External, 1/2" Dia.
49	1	391-05013	Packing, Molded, 12" O.D. x 2.75" I.D., Double Seal
50	2	204-01401	Washer, Flat, Machinery Bushing, 1/2 X 18 Ga.
51	1	390-16005	Wiper Ring, Molded, 12" Bore
52	2	200-31421	Capscrew, Special, Hex Head, Steel, Plated, Grade 5

single stem  
adaptee kit  
480-16014

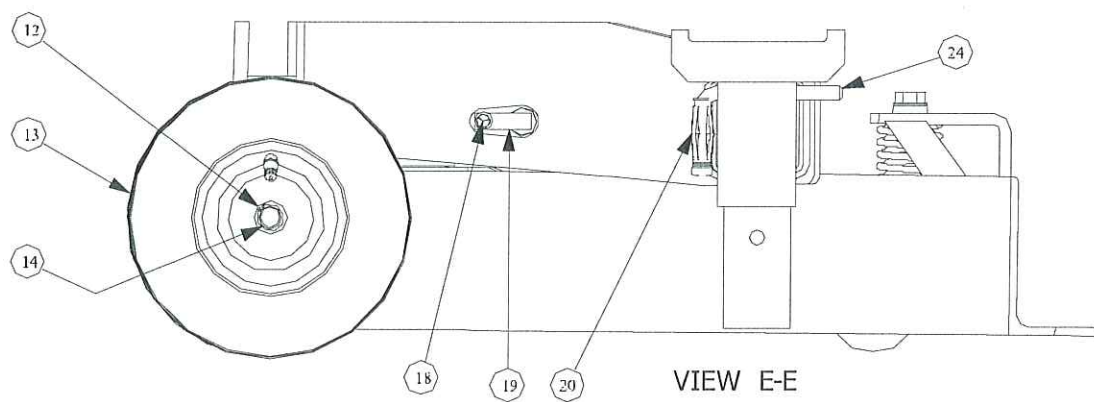








SECTION B-B



VIEW E-E

