



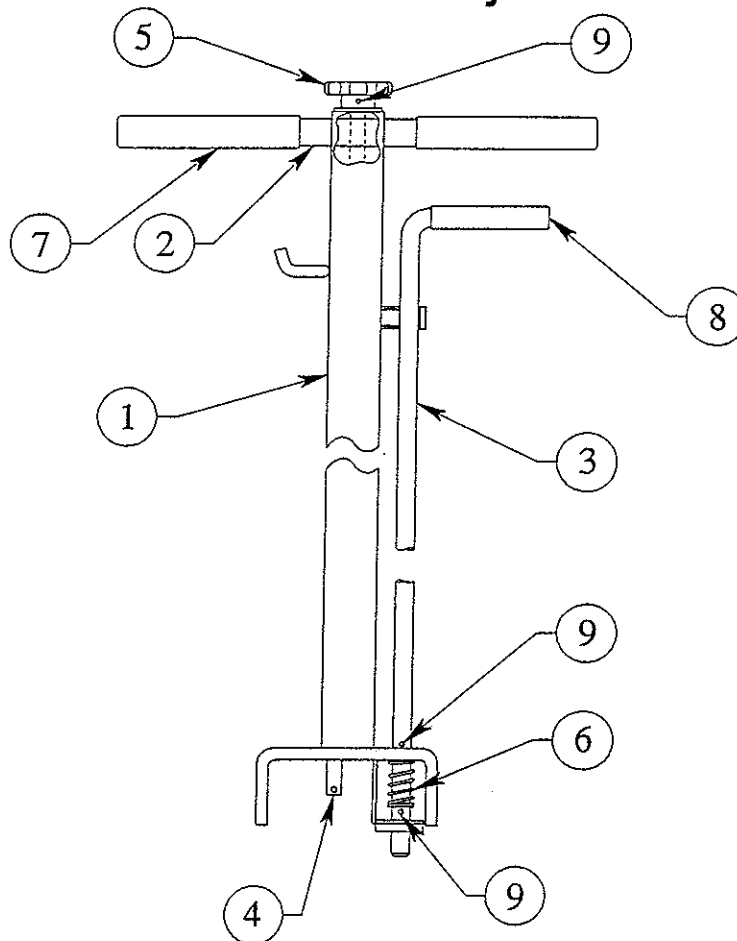
3501 S. Leonard Rd.  
P.O. Box 728  
St. Joseph, Missouri 64502  
U.S.A.  
Toll Free: (800) 821-7320  
Phone: (816) 233-6121  
Fax: (816) 233-7251  
Email: gray@grayusa.com  
www.grayusa.com

# Parts List

## FSJ-60A Floor Service Jack

57-003601 + up

### Handle Subassembly Parts List



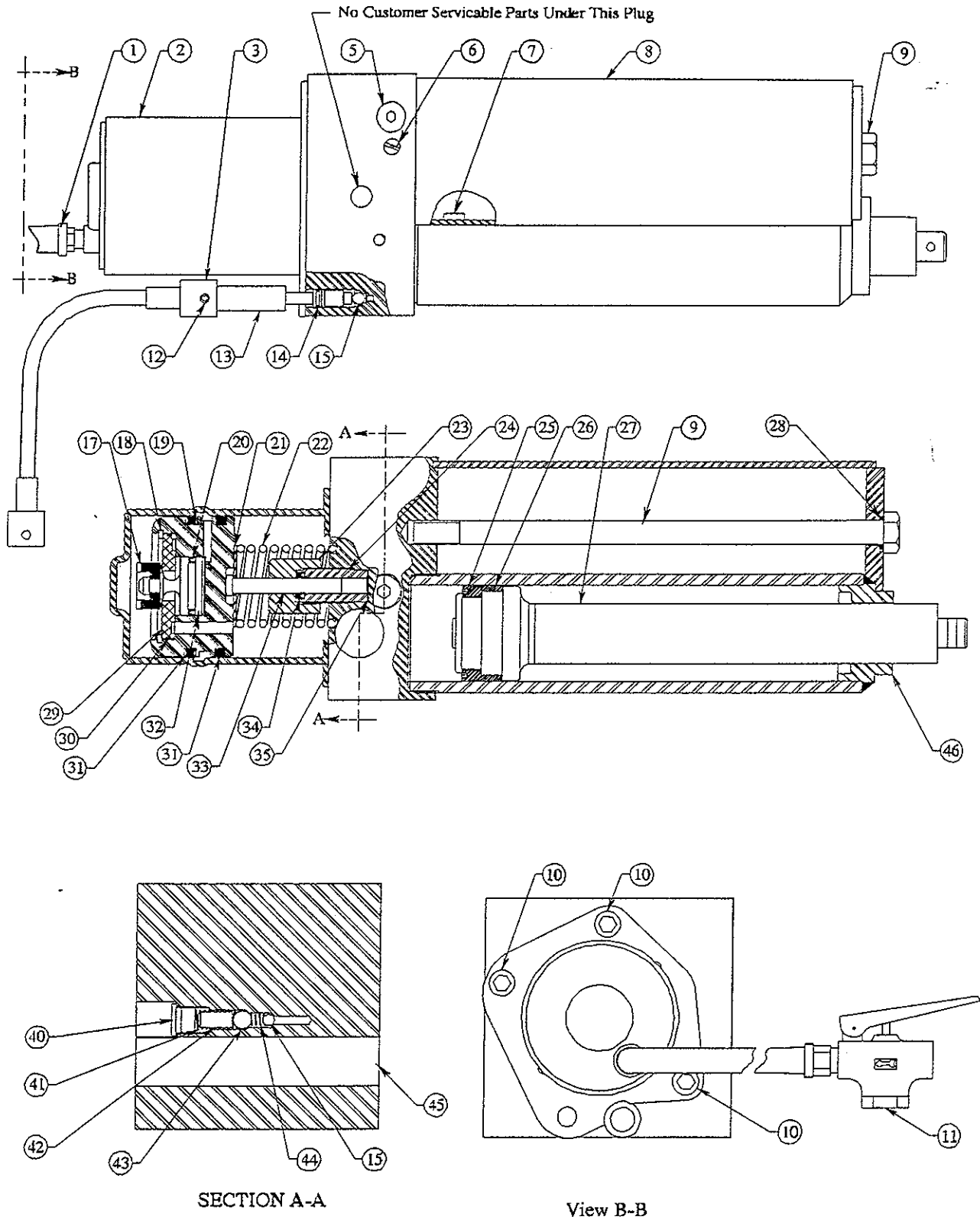
Item	Qty.	Part Number	Description
1	1	2-857-02005	Handle Weldment
2	1	1-850-04010	Handle Bar, Drilled
3	1	1-857-02007	Handle Release Rod Weldment
4	1	1-857-04026	Release Rod
5	1	1-232-20094	Hand Wheel, Drilled, 2-1/2 Dia.
6	1	1-233-14012	Spring, Compression, 53/64 Dia.
7	2	1-232-20001	Handle Grip, 7/8 I.D. x 5 Long
8	1	1-232-20005	Handle Grip, 5/8 I.D. x 3-1/2 Long
9	3	0-235-21011	Roll Pin, 3/16 Dia. x 1-1/8 Long

This diagram shows the exploded view of the 1000 Series Hydraulic Cylinder and its mounting bracket. The cylinder is shown in a horizontal orientation, with various components labeled with circled numbers. The mounting bracket is shown below the cylinder, with its components also labeled. The diagram includes the following labels:

- Serial No. and Capacity Location
- Oil Reservoir Vent Screw and Plug Location
- 23
- 22
- 20
- 22
- 23
- A
- 19
- 9
- B
- 14
- 15
- 16
- 2
- 12
- 18
- 13
- 10
- 24
- 11
- 17
- 16
- 7
- 25
- 4
- 3
- 10
- 9
- 1

Page 2 of 4  
670-90303

# Power Unit Assembly Parts List



Power Unit Assembly Parts List is continued on page 4.

## Power Unit Assembly Parts List (Continued)

Item	Qty.	Part Number	Description
1	1	1-271-02001	Hose, 1/4 I.D. x 38" Long
2	1	3-310-11024	Air Motor Cylinder Weldment
3	1	1-857-04033	Flex Shaft, FSJ-60
5	1	1-274-32001	Plug, SAE #4 W/O'Ring
6	1	1-353-49150	Vent Screw
7	1	1-353-49010	Magnet, 1/8 Dia. x 7/16 Long
8	1	1-353-41042	Reservoir Weldment
9	1	0-200-81427	Capscrew, Hex Hd., 1/2-20 UNF, Grade 5, 9-3/4 Long
10	3	0-201-11202	Capscrew, Socket Hd., 3/8-24 UNF, Steel 1/2 Long
11	1	1-312-00002	Air Valve
12	1	0-235-21004	Roll Pin, 3/16 Dia., 3/4 Long
13	1	1-353-49172	Release Stem
14	1	0-390-00002	O'Ring, 3/8 O.D. x 1/4 I.D. x 1/16 Dia., ARP-010, 70 Duro.
15	2	0-236-00005	Ball, 1/4 Dia., 440C, Stainless Steel, Grade 25, 58 - 62 RC
17	1	2-315-00002	Seal, Shuttle Valve
18	1	1-230-06001	Retaining Ring, Internal, 2-1/8 Dia.
19	1	4-310-41017	Piston, Air Motor, Injection Molded
20	1	1-390-10076	Seal, 1-1/4 O.D. x 1" I.D. x 1/8 W
21	1	1-204-01106	Washer, 1.750 O.D. x .320 I.D. x .064
22	1	1-233-15003	Spring, Compression, 1-3/4 O.D.
23	1	1-353-43029	Pump Housing Cap
24	1	1-353-43030	Pump Housing
25	1	1-390-11088	Seal, 2 O.D. x 1-1/2 I.D. x .375
26	1	1-441-05000	Sleeve Bearing
27	1	2-353-42019	Piston Rod Weldment
28	1	0-390-00062	O'Ring, 11/16 O.D. x 1/2 I.D. x 3/32 Dia., 90 Duro, Bana - N
29	1	1-310-91014	Piston, Cap, Injection Molded
30	1	1-390-01061	O'Ring, 2-1/4 x 1/16 x 2-1/8, Nitrile Rubber, Compound 4456, 70 Duro
31	2	1-390-02010	Quad Ring, 3 O.D. x 2-5/8 I.D. x 3/16
32	1	2-310-40004	Air Shuttle Piston, Injection Molded
33	1	1-353-49156	Pump Plunger
34	1	1-390-10058	Seal, 9/16 x 5/16 x 1/8 SQB
35	1	1-390-10060	Backup Ring, 11/16 x 1/2 x .040 Thick
40	1	1-274-34001	Plug, Str. Th'd., Recessed Socket, W/O'Ring
41	1	1-233-12002	Spring, Compression, .406 O.D.
42	1	1-353-49162	Check Valve Spacer
43	1	0-236-00006	Ball, 3/8 Dia., 440C, Stainless Steel, Grade 25, RC 58-62
44	1	1-233-10007	Spring, Compression, .250 O.D.
45	1	4-353-49165	Hydraulic Block
46	1	2-353-41040	Cylinder Weldment

# **FSJ-60 TROUBLE SHOOTING**

## **PROBLEM: WILL NOT LIFT LOAD**

### **Possible solutions:**

- Vent screw is not open or is plugged. Open 1/4 turn and or remove and free blockage.
- Release stem is bent or damaged. Replace if needed
- Release knob is not tight enough. Tighten release knob.
- Check ball is missing from behind the release stem. Install 1/4" steel check ball.
- Unit is low on hydraulic fluid. Replenish with hydraulic oil only.
- Air pressure is too low. Raise the PSI going to the jack. PSI should range from 110 to 175 PSI.
- Lifting too much weight. Use a lifting device with a higher lifting capacity.
- Check balls not seating. Remove, clean and re-seat check balls.
- Seals are worn. Replace any worn parts if needed.

## **PROBLEM: AIR MOTOR IS STALLING**

### **Possible solutions:**

- Air pressure is too low. Raise the PSI going to the jack. PSI should range from 110 to 175 PSI.
- Air motor piston needs lubricating. Insert a few drops of air tool oil into the airline and cycle jack.
- Seals or parts are worn. Replace if needed.

## **PROBLEM: JACK IS SLOWLY LEAKING DOWN**

### **Possible solutions:**

- Check balls are not seating. Remove, clean and re-seat check balls.
- Check ball is missing from behind the release stem. Install 1/4" steel check ball.
- Release knob is not tight enough. Tighten release knob.
- Seals or parts are worn. Replace if needed.

## **HYDRAULIC FLUID LEVEL CHECKING AND FILLING PROCEDURE**

1. Make sure lift arm is fully lowered and the jack is placed on a level surface.
2. Remove the plug from the hydraulic power module. It is located beneath the hole in the cover plate on the frame of the jack. Removal requires a 3/16" hex wrench. Make sure the area around the oil reservoir plug is clean and dry before removing plug.
6. Check fluid level. The oil should be visible in the hole for the reservoir plug. If fluid is low, **close the vent screw** and add a high grade hydraulic fluid equivalent to Mobile DTE #11 oil. **CAUTION:** Do not use brake or transmission fluid. Use of the wrong fluid can result in deterioration of the seals or corrosion. Do not overfill. Overfilling can occur if the lift arm is raised, the jack is not on a level surface, or the vent screw is open. Overfilling results in oil leaking from the vent screw until the oil in the reservoir reaches the proper level.
7. Reinstall and secure the fill plug and open the vent screw. Wipe up any spilled oil. Connect to air supply and test for normal operation.