

# Professional Service Equipment



3501 S. Leonard Rd.  
P.O. Box 728  
St. Joseph, Missouri 64502  
U.S.A.  
Toll Free: (800) 821-7320  
Phone: (816) 233-6121  
Fax: (816) 233-7251  
Email: gray@grayusa.com  
www.grayusa.com

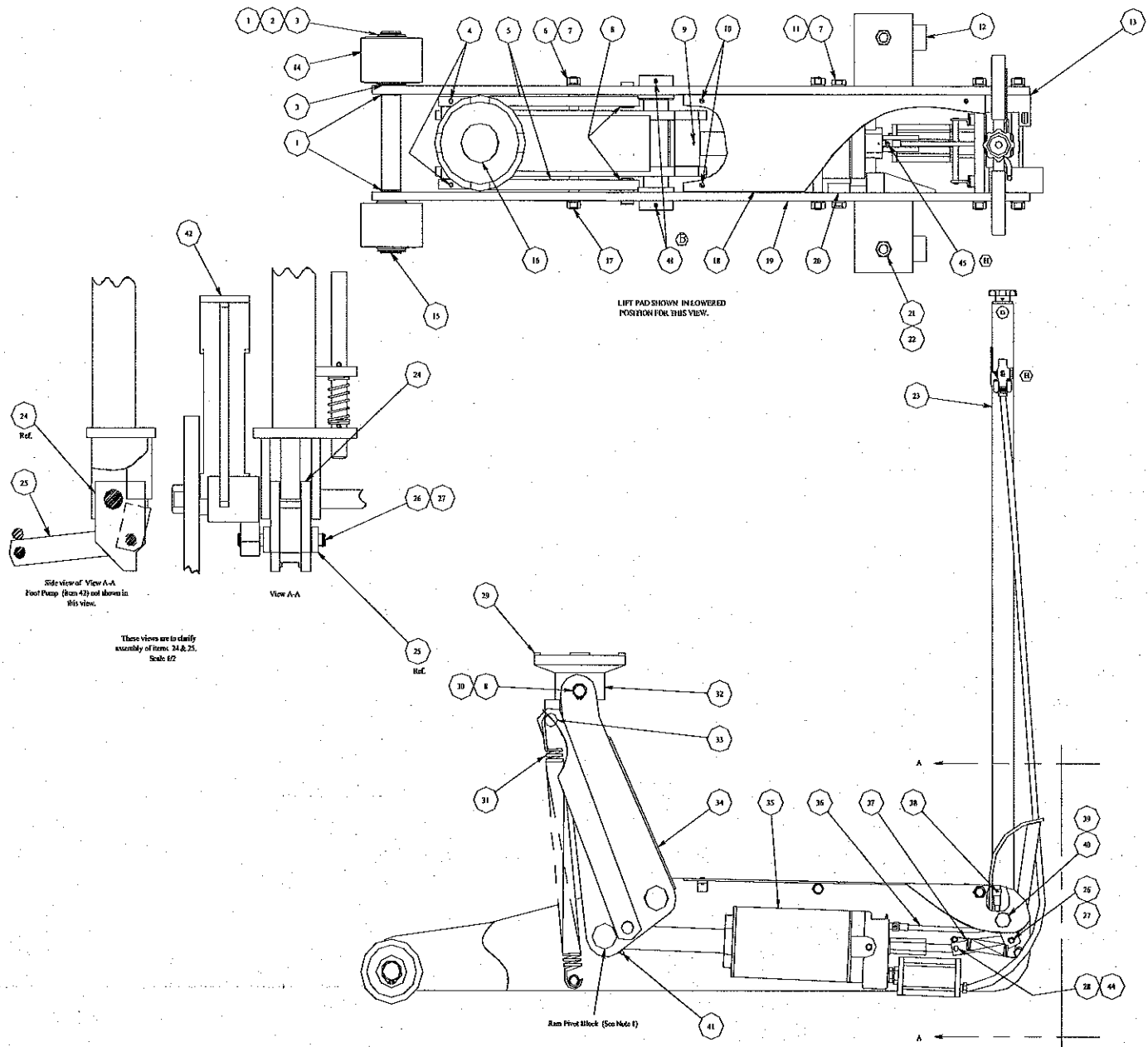
## Parts List

round  
air  
motor

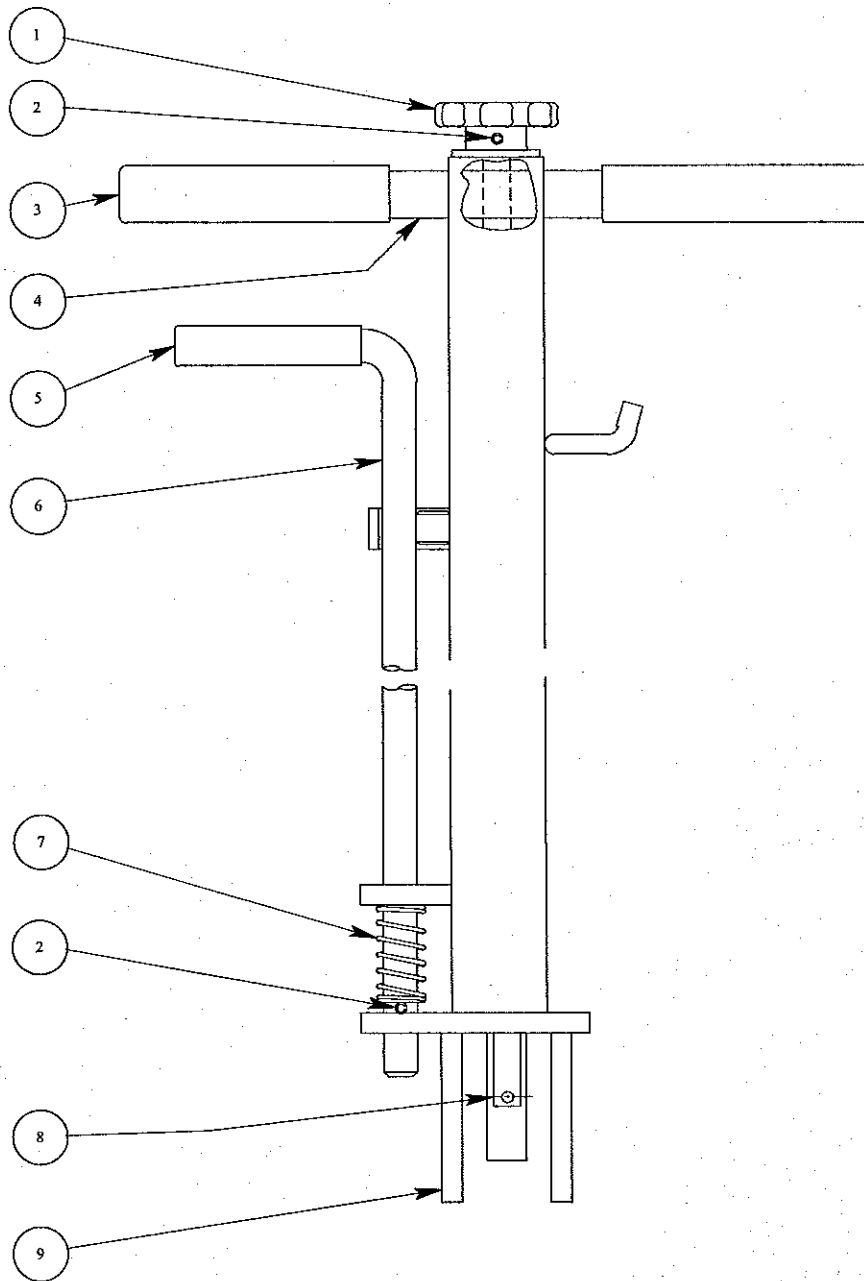
## FSJ-200

SERIAL NUMBER 77-003914 & Above

ITEM	QTY	PART NUMBER	DESCRIPTION
1	4	1-230-14001	Retaining Ring, External, 1 1/2 Dia.
2	2	1-204-02301	Washer, flat, 1 1/2 x 14 Ga.
3	4	1-441-24001	Bearing, flanged, 1.5 x 1.625 x 1.5
4	2	0-235-22006	Roll Pin, 5/16 Dia., 2" Long
5	2	1-877-04014	Leveling Link
6	8	0-203-01600	Nut, Hex, 5/8-11 UNC
7	10	0-204-11601	Washer, Lock, Split Type, 5/8 Dia.
8	4	1-230-13000	Retaining Ring, External, 1" Dia.
9	1	0-235-21030	Roll Pin, 3/16 Dia., 2" Long
10	5	1-202-00803	Screw, Pan Hd, 10-32 UNC, Steel, Plated, 5/8" Long
11	2	0-200-31608	Capscrew, Hex Hd, 5/8-11 UNC X 1 1/2 Lg
12	2	1-480-11028	Caster, Swivel Stem, 4" Dia., Steel
13	1	3-877-02013	Frame Weldment, R.H.
14	2	1-480-00007	Wheel and Grease Fitting Subassembly
15	1	1-877-04023	Front Axle
16	1	1-877-04004	Lift Pad Retainer
17	4	1-877-04021	Shaft, Threaded Both Ends, 3/4 Dia.
18	1	1-877-04030	Top Cover
19	1	3-877-02012	Frame Rail Weldment, L.H.
20	2	1-203-60605	Nut, Special, 5/8-11 UNC
21	2	0-203-01701	Nut, Hex, 3/4-10 UNC
22	2	0-204-11700	Washer, Lock, Split Type, 3/4 Dia.
23	1	3-877-01001	Handle Subassembly
24	1	2-877-02004	Pump Pivot Link Weldment
25	2	1-877-02014	Pump Link Weldment
26	1	1-877-04060	Pump Link Rear Pin
27	4	1-230-11012	Retaining Ring, External, 7/16 Dia.
28	1	1-200-31310	Cap Screw, Special, Hex Hd 7/16- 14 UNC, Steel Plated, Gr 8
29	1	2-877-04001	Lift Pad, 10 Ton Floor Jack
30	1	1-877-04024	Lift Pad Pivot Shaft
31	1	1-233-05002	Spring, Extension, 1 15/32 Dia., 12 1/2 Lg.
32	1	1-878-04061	Lift Pad Mount Machined
33	1	1-877-04033	Leveling Link Front Pin
34	1	3-877-02005	Lift Arm Weldment
35	1	4-353-04070	Power Unit
36	1	2-877-04006	Flex Shaft
37	2	1-233-04002	Spring, Extension, 15/16 O.D.
38	1	0-235-21004	Roll Pin, 3/16 Dia. X 3/4 Long
39	1	1-202-01710	Capscrew, Hex Hd, 3/4-10 UNC X 9 1/2 Lg
40	1	1-203-01705	Nut, Hex, 3/4-10 UNC, Self Locking
41	4	1-400-50000	Grease Fitting, 3/16 Drive
42	1	3-877-02010	Foot Pump Pivot Weldment
43	1	3-877-00002	Placard Orientation and Shipping Assembly
44	1	0-203-01302	Nut, Hex, 7/16-14 UNC, Steel Plated, Self Locking
45	0		Use one (1) Item 10



## Handle Subassembly Parts

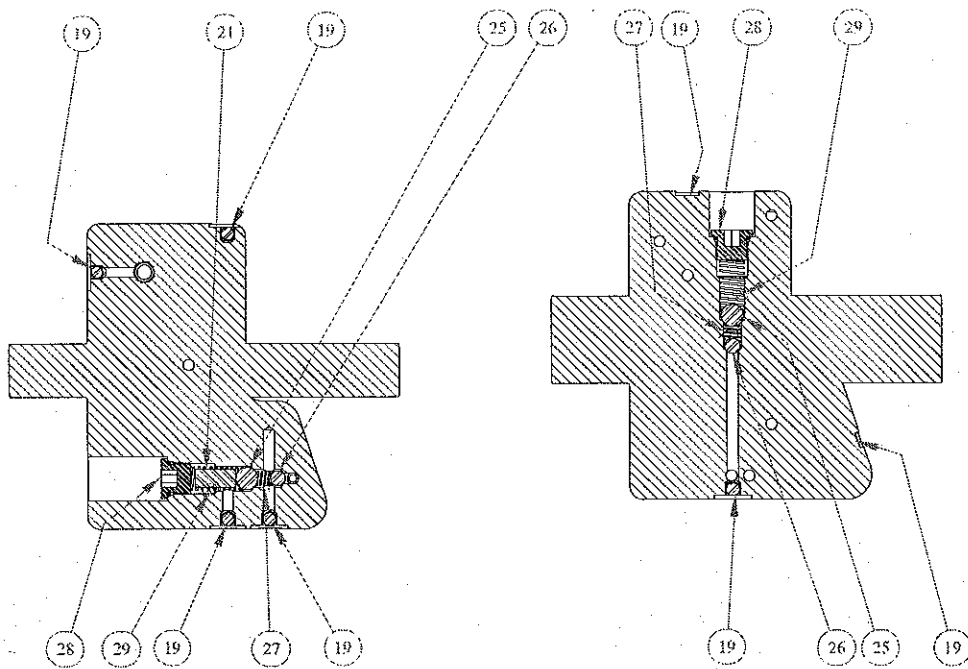


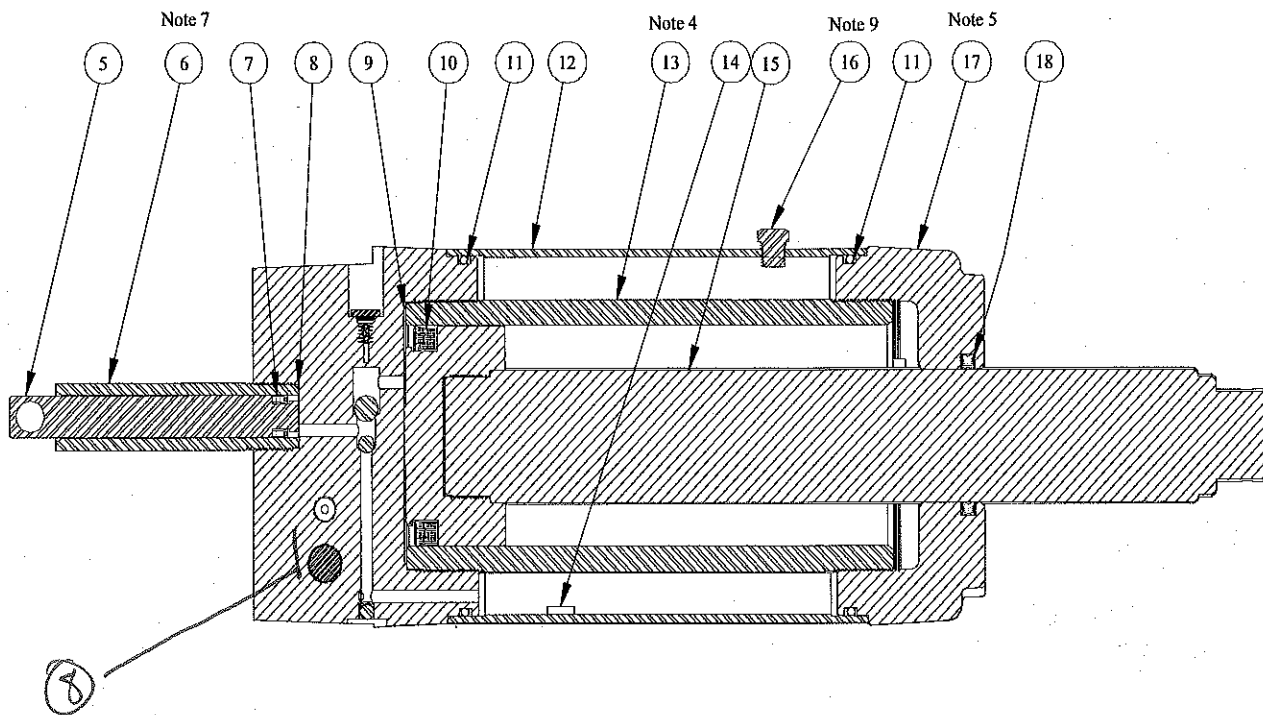
ITEM	QTY	PART NUMBER	DESCRIPTION
1	1	1-232-20094	Hand Wheel, Drilled, 2 1/2" Dia.
2	2	0-235-21011	Roll Pin, 3/16" Dia. X 1 1/8" Lg.
3	2	1-232-20001	Handle Grip, 7/8" I.D. X 5" Lg.
4	1	1-850-04010	Handle Bar, Drilled
5	1	1-232-20005	Handle Grip, 5/8" I.D. X 3 1/2" Lg.
6	1	1-877-02007	Handle Release Rod Weldment
7	1	1-233-14012	Spring Compression, 53/64" O.D.
8	1	1-877-04040	Power Unit Release Rod
9	1	3-877-02011	Handle Weldment

### HYDRAULIC UNIT

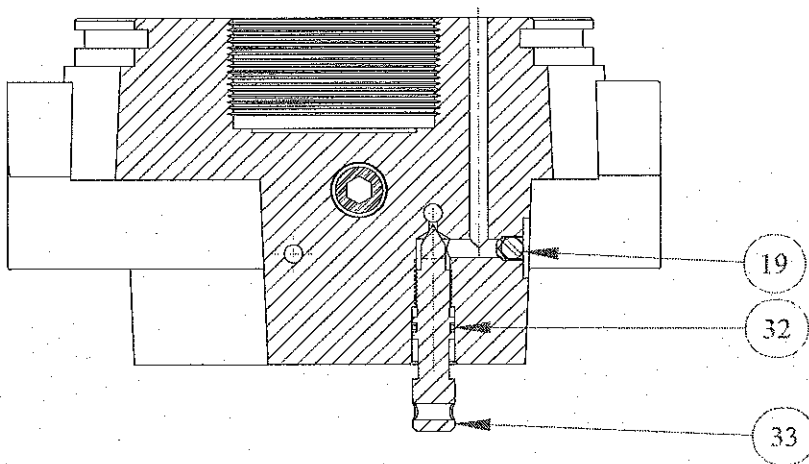
ITEM	QTY	PART NUMBER	DESCRIPTION
1	1	201-40019	Capscrew, Hex Socket Head, 10-32 UNF, Steel, 1/2" Long
2	1	204-00807	Washer, Special, .180 I.D. X .745 O.D. X .050 Thick
3	1	353-49251	Hydraulic Block, FSJ - 200
4	1	310-60002	Air Motor Subassembly
5	1	353-49255	Plunger
6	1	353-49257	Pump Housing
7	1	390-10084	Seal, 5/8 O.D. X 3/8 I.D. X 1/4 Type B
8	2	390-10085	Back Up Ring, 15/16 X 3/4 X .040 Thick
9	1	390-11105	Back Up Ring, 3 3/4 X 3 3/8 X .055 Thick
10	1	390-11104	Seal, 2 1/2 I.D. X 3 1/4 O.D. X 3/8
11	2	390-02015	O'Ring, 5 I.D. X 5 1/4 O.D. X 1/8 CS
12	1	353-41063	Reservoir Tube, FSJ - 200
13	1	353-41064	Hydraulic Cylinder, FSJ - 200
14	1	353-49010	Magnet, 1/8 Dia., X 7/16 Long
15	1	353-42029	FSJ-200 Piston/Piston Rod Machined
16	1	275-20009	Pipe Plug, 1/8", External Hex
17	1	353-43045	End Cap, FSJ - 200
18	1	390-01063	Quad Seal, 2 I.D. X 2 3/8 O.D. X 3/16 CS
19	8	230-40001	Plug
20			
21	1	353-49162	Check Valve Spacer
22			
24			
25	2	236-00006	Ball, 3/8 Dia., 440 C, Stainless Steel, Grade 25, 58-62 RC
26	2	236-00005	Ball, 1/4 Dia., 440C Stainless Steel, Grade 25, 58-62 RC
27	2	233-10007	Spring, Compression, 1/4 Dia. X 3/8 Long
28	2	274-34001	Plug, Straight Thread, Recessed Hex, with O'Ring
29	2	233-12002	Spring, Compression, .406 O.D.
30			
31			
32	1	390-00007	O'Ring, 7/16 O.D. X 5/16 I.D. X 1/16 CS
33	1	353-49279	Release Stem
34	1	312-91004	Screen
35	1	312-00002	Air Valve
36	1	271-02006	Air Hose, 1/4 I.D. X 50" Long

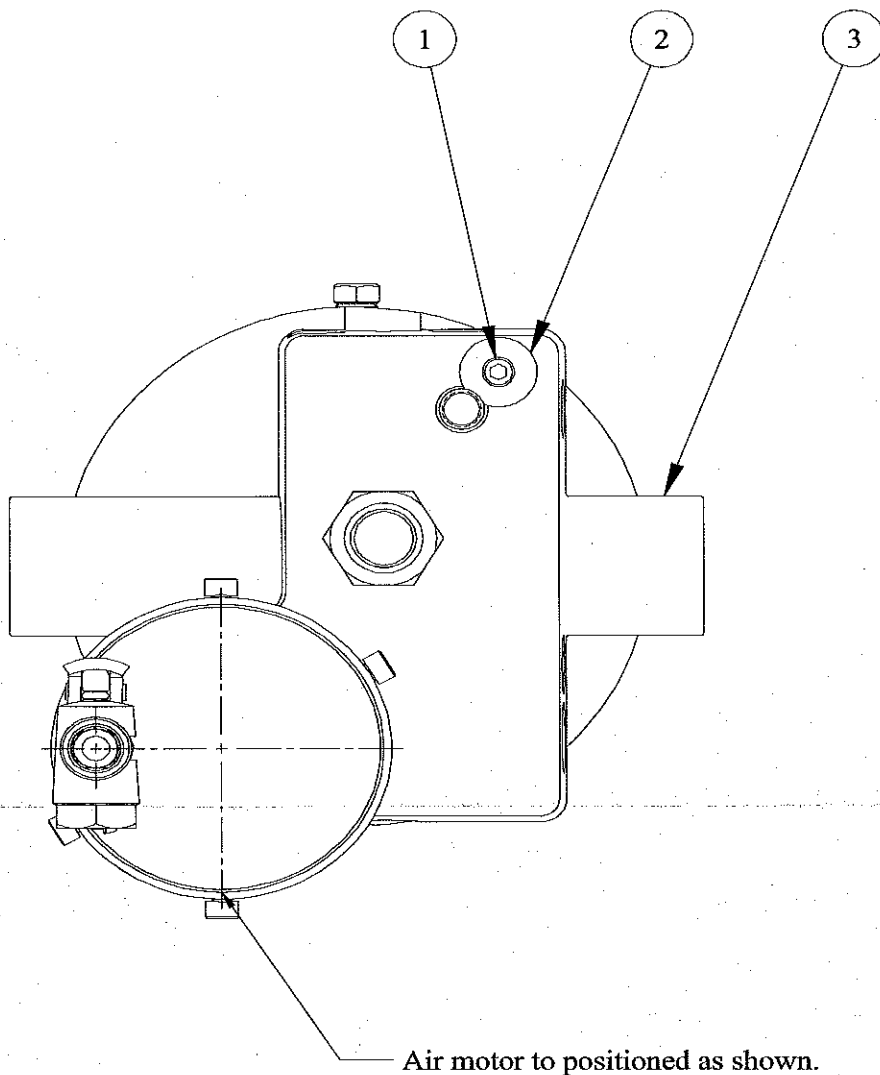
— 1 goes in each large port on hydraulic block. 1 for plunger 1 for air motor.

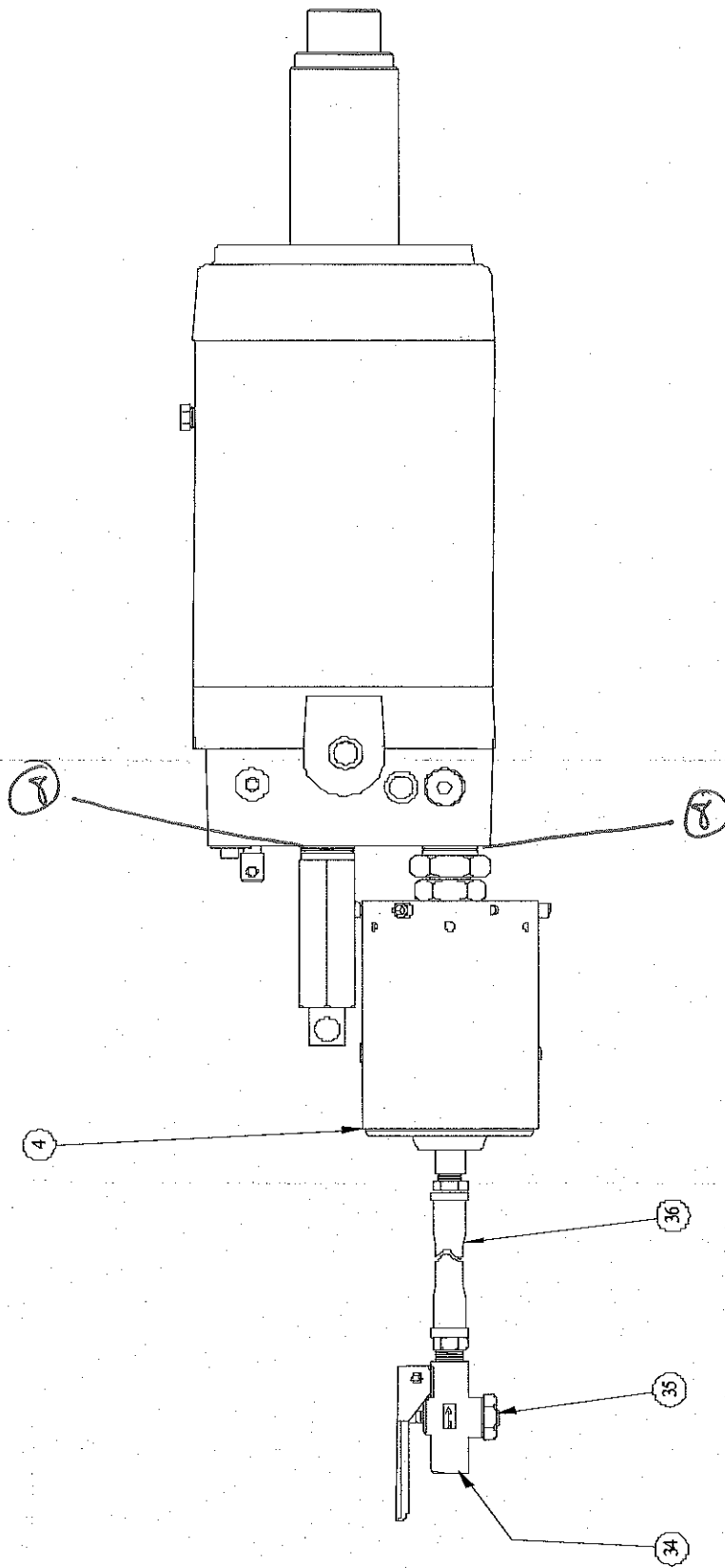




SECTION A-A



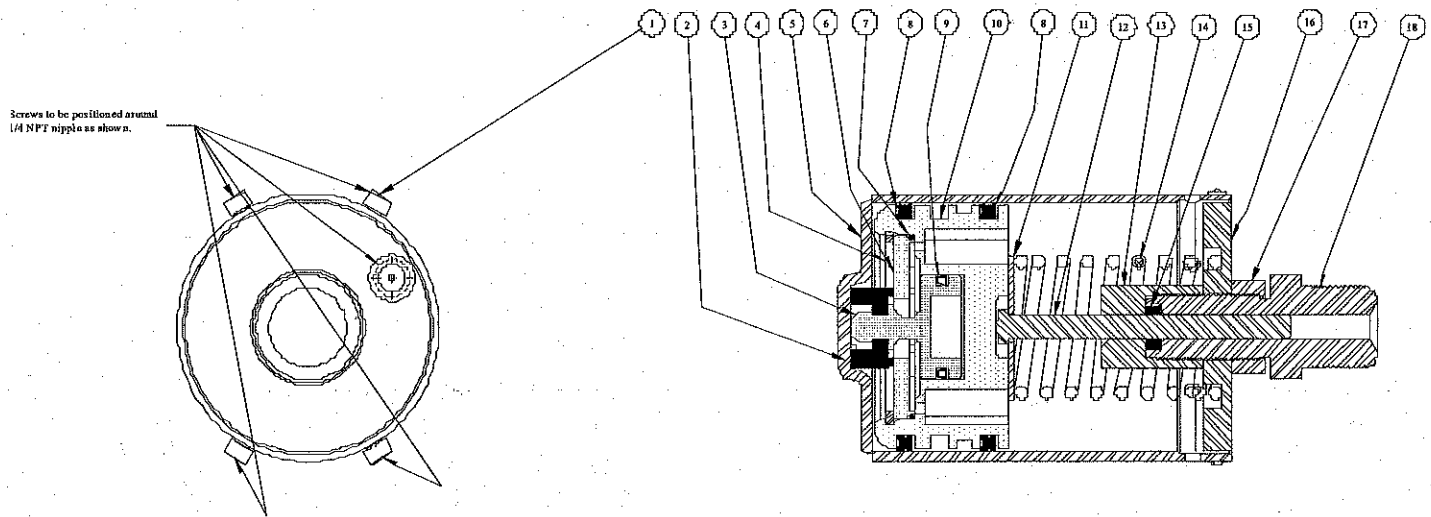




**Air Motor Assembly**



Item	Qty	Part Number	Description
1	4	201-00821	Capscrew, Socket Head, #10 - 32UNF, Steel, Grade 8, .500" Long
2	1	315-00002	Seal, Shuttle Valve
3	1	310-40004	Air Shuttle Piston, Injection Molded
4	1	230-06001	Retaining Ring, Internal, 2 1/8 Diameter
5	1	310-11033	Air Motor Cylinder Weldment
6	1	310-91014	Piston Cap, Injection Molded
7	1	390-01061	O'Ring, 2 1/4 X 1/16 X 2 1/8, Nitrile Rubber, Compound 4456, 70 Duro.
8	2	390-02010	Quad Ring, 3" O.D. X 2 5/8 I.D. X 3/16
9	1	390-10076	Seal, 1 1/4 O.D. X 1" I.D. X 1/8 W
10	1	310-41017	Piston, Air Motor, Inj. Molded
11	1	204-01106	Washer, 1.750 X .320 X .064
12	1	353-49252	Pump Plunger
13	1	353-49258	Pump Housing Cap
14	1	233-15003	Spring, Compression, 1 3/4 O.D.
15	1	390-10083	Seal, .277 I. D, X .528 O.D. X .188 Typ. B
16	1	310-20032	Air Motor End Cap
17	1	203-62004	Nut, Special, 13 - 16UN, .400 Long
18	1	353-49254	Pump Housing



## **FSJ-200 Trouble Shooting**

### **SN# 77-003914 & Up**

#### **PROBLEM: JACK FAILS TO LIFT LOAD**

Possible Solutions:

- Hydraulic oil level is low. See Adding Hydraulic Fluid Instructions in Owners Manual.
- Airline leaks. Locate leak & correct. Replace hose if cracked.
- Inadequate air pressure. Jack requires minimum 90 PSI to raise full load. Increase air pressure.
- Release knob is open. Close release knob by turning clockwise until snug.
- Jack is overloaded. Use other lifting means.

#### **PROBLEM: JACK FAILS TO HOLD LOAD**

Possible Solutions:

- Release knob is open. Close release knob by turning clockwise until snug.

#### **PROBLEM: AIR MOTOR WON'T RUN**

Possible Solutions:

- Airline leaks. Locate leak & correct. Replace hose if cracked.
- Air piston is sticking or is stuck. Add a few drops of airline oil to the air inlet of the jack to lubricate the air motor.
- Inadequate air pressure. Jack requires 90-175 PSI to raise rated load.

#### **PROBLEM: JACK LEAKS OIL**

Possible Solutions:

- Reservoir fill plug is loose; tighten fill plug.
- Reservoir is overfilled. Oil will leak from the oil fill plug if the reservoir is overfilled.