



**Professional
Service
Equipment**

3501 S. Leonard Rd.

P.O. Box 728

St. Joseph, MO U.S.A. 64502

1-800-821-7320

(816) 233-6121

FAX (816) 233-7251

or (816) 387-8157

www.grayusa.com

MM-2000 HEAVY DUTY TRANSMISSION JACK

PARTS LIST

SERIAL # 41-001000 & UP

PRICES GOOD THRU 12/29/00.

ALL PRICES SUBJECT TO TAX AND FREIGHT.

ITEM	QTY	PART NUMBER	DESCRIPTION
1	2	203-01604	Hex Nut, 5/8 - 8 Acme
2	2	203-61604	Nut, Special, 5/8 - 8 Acme Tap
3	8	440-31002	Bearing, Race
4	4	440-31001	Thrust Bearing
5	1	841-04006	Side Tilt Trunnion
6	2	232-20112	Knob
7	1	841-02001	Side Tilt Shaft
8	1	204-02201	Washer, 1-7/8 x 1-3/8 x 1/16
9	1	841-04001	Spacer
10	1	235-22004	Roll Pin, 3/8 Dia x 2
11	1	841-02003	Tilt Shaft
12	2	202-01703	Capscrew, Special, 3/4 - 10UNC
13	1	841-02002	Fore/Aft Tilt Shaft
14	1	841-04005	Fore/Aft Tilt Trunnion
15	2	841-04004	Adapter Bracket Link
16	2	826-04078	Nut
17	2	201-31003	Set Screw, 1/4 - 28 UNF x 1/4
18	1	235-21004	Roll Pin, 3/16 x 3/4
19	1	841-02004	Lift Arm Weldment
20	1	400-50000	Grease Fitting
21	1	203-01403	Hex Nut, 1/2-13 UNC Self Lock
22	4	235-21003	Roll Pin, 1/4 x 1-1/4
23	4	825-04101	Ratchet Pawl
24	4	233-20002	Flat Spring
25	4	205-22001	Rivet, 3/16 Dia
26	1	841-02006	Adapter Weldment
27	1	202-01221	Capscrew, Special, 3/8-24 UNF
28	1	232-20001	Handle Grip
29	1	232-20089	Handle Tube
30	1	235-21002	Roll Pin, 1/4 x 1-1/2
31	1	841-02007	Handle Weldment
32	2	230-11003	Retaining Ring, 3/8 Dia
33	1	470-20002	Handle Pivot Shaft
34	1	470-21003	Pump Shaft
35	2	230-11000	Retaining Ring, 1/2 Dia
36	1	271-42002	Hose
37	1	274-02002	Adapter Fitting
38	1	353-45002	Hydraulic Cylinder Assembly
39	1	235-00003	Cotter Pin, 1/8 x 1-1/4
40	4	390-00023	O-Ring, 3/8 x 1/16 x 1/2
41	1	353-40028	Hyd Power Unit (Exchange)
42	1	390-21002	Gasket
43	1	353-41032	Hydraulic Reservoir/Bracket
44	1	470-23023	Cylinder Pivot Shaft
45	4	230-12001	Retaining Ring, 3/4 Dia
46	1	200-31418	Capscrew, 1/2 - 13 UNC x 4
47	2	230-13002	Retaining Ring, 7/8 Dia
48	1	470-24005	Lift Arm Pivot Shaft



**Professional
Service
Equipment**

3501 S. Leonard Rd.

P.O. Box 728

St. Joseph, MO U.S.A. 64502

1-800-821-7320

(816) 233-6121

FAX (816) 233-7251

or (816) 387-8157

www.grayusa.com

MM-2000 HEAVY DUTY TRANSMISSION JACK

PARTS LIST

SERIAL # 41-001000 & UP

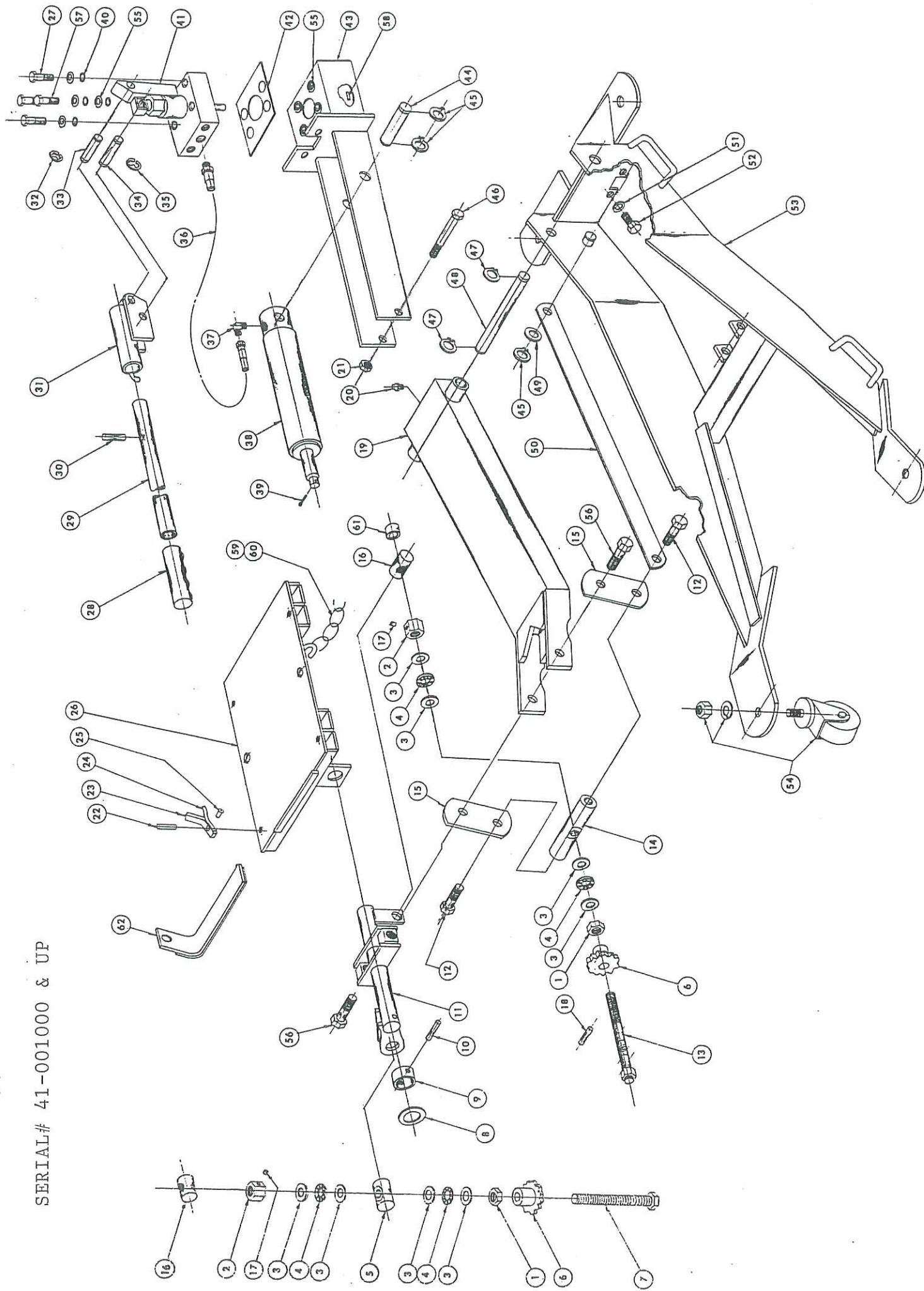
PRICES GOOD THRU 12/29/00.

ALL PRICES SUBJECT TO TAX AND FREIGHT.

ITEM	QTY	PART NUMBER	DESCRIPTION
49	2	204-01701	Washer, 3/4 x 18 Ga
50	2	828-04018	Leveling Link
51	2	204-11201	Lockwasher, 3/8 Med
52	2	200-31206	Capscrew, 3/8-16 UNC x 1
53	1	841-02005	Frame Weldment
54	4	480-11025	Caster, 4" Dia
55	8	204-01206	Washer, Special
56	2	202-01704	Capscrew, Special, 3/4-10 UNC
57	3	200-81210	Capscrew, 3/8-24 UNF x 2
58	1	353-49010	Magnet, 1/8 Dia x 7/16
59	1	234-39008	Chain, 1/0, 12 Links With Lock
60	1	234-39009	Chain, 1/0, 100 Links
61	1	826-04095	Spacer, Short
62	4	828-02010	Transmission Bracket, 75 Deg

PARTS LIST — MM-2000A

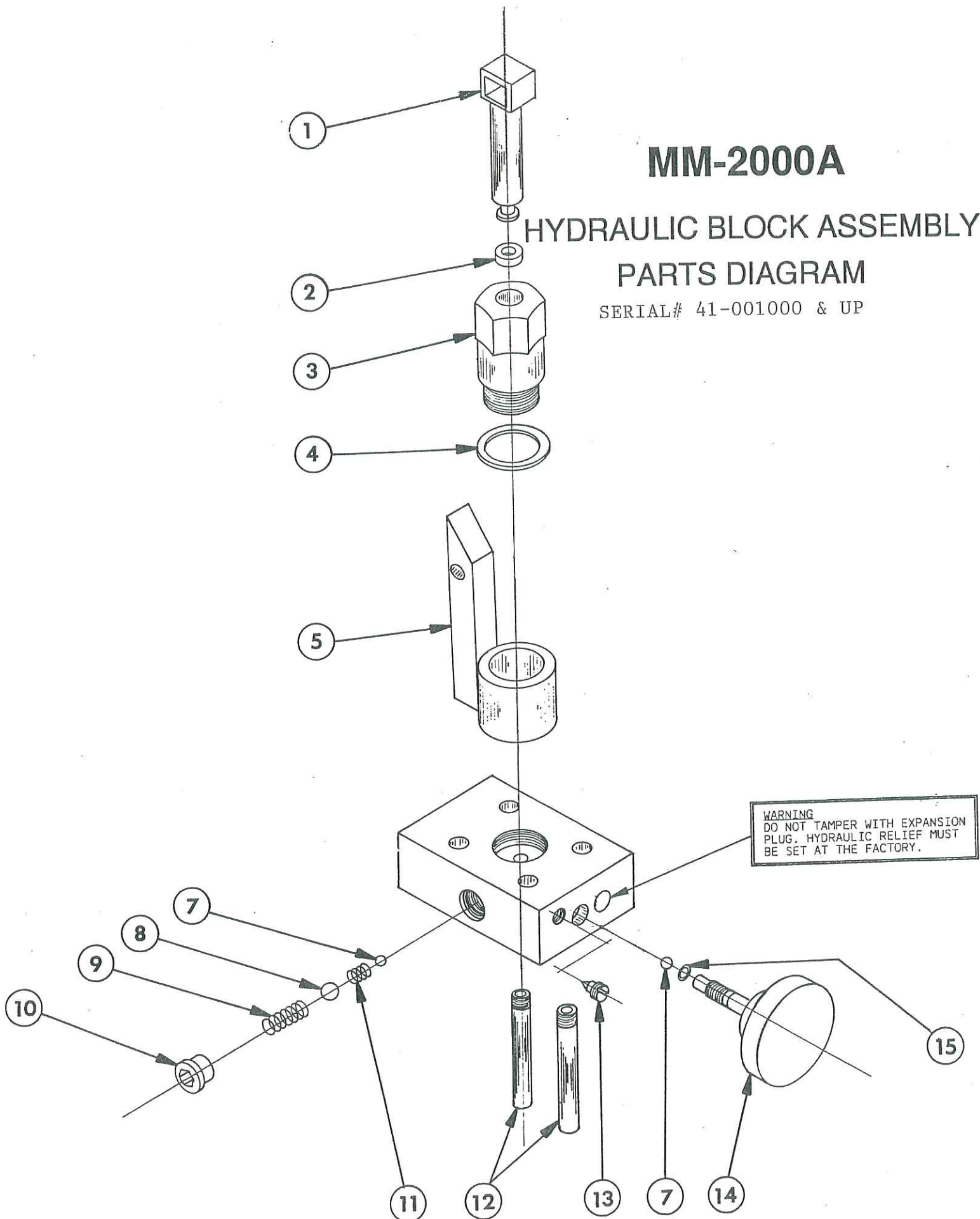
SERIAL# 41-001000 & UP



MM-2000A

HYDRAULIC BLOCK ASSEMBLY PARTS DIAGRAM

SERIAL# 41-001000 & UP





**Professional
Service
Equipment**

3501 S. Leonard Rd.

P.O. Box 728

St. Joseph, MO U.S.A. 64502

1-800-821-7320

(816) 233-6121

FAX (816) 233-7251

or (816) 387-8157

www.grayusa.com

MM-2000A HYDRAULIC BLOCK ASSEMBLY

PARTS LIST

SERIAL # 41-001000 And Up

PRICES GOOD THRU 12/29/00.

ALL PRICES SUBJECT TO TAX AND FREIGHT.

ITEM	QTY	PART NUMBER	DESCRIPTION
1	1	353-49174	Plunger Weldment
2	1	390-10010	Plunger Seal
3	1	353-49139	Pump Sleeve
4	1	204-02202	Washer
5	1	828-02018	Handle Swivel
7	2	236-00005	Ball, 1/4 Dia
8	1	236-00006	Ball, 3/8 Dia
9	1	233-12002	Spring, 13/32 Dia
10	1	274-34001	Plug With O-Ring
11	1	233-10007	Spring, 1/4 Dia
12	2	353-49140	Suction Tube
13	1	353-49150	Vent Screw
14	1	353-49120	Release Knob With O-Ring
15	1	390-00002	O-Ring, 3/8 x 1/4 x 1/16
			AVAILABLE KITS
	1	8841-01003	Knob Protector Kit
			(Not Shown)
	1	8841-01004	Pump Seal Kit - MM-2000A
			(Includes items 2, 4, 15 and item 42 on frame drawing)
	1	8841-01005	Pump Plunger Kit
			(Includes Items 1, 2, 3, 4, 15 and item . on frame drawing)
			DNO1000

MM-2000A TROUBLE SHOOTING

PROBLEM: JACK WILL NOT PUMP UP

Possible Solutions:

- Reservoir vent screw next to release knob is not open. Open 1 turn.
- Jack has lost its prime. Follow these priming procedures.
 1. Open release knob three full turns.
 2. Grab lifting platform, raise to full height and let back down. Do this two or three times.
 3. Close release knob and pump jack to full height and then release.
- Check balls are not seating. Remove, clean and re-seat check balls.
- Low on hydraulic fluid. Follow filling procedures.

PROBLEM: JACK IS LEAKING DOWN

Possible Solutions:

- Release valve not closing completely.
- Release knob is bent or broken. Replace if needed.
- Check ball is missing from behind release knob.
- Check balls not seating. Remove, clean and re-seat check balls.
- Hydraulic ram or pump seal is bad. Check for oil leaks and fix.

PROBLEM: JACK WILL NOT LIFT TO FULL HEIGHT

Possible Solution:

- Jack is low on hydraulic fluid. Follow filling procedure.

MM-2000A

PRIMING INSTRUCTIONS

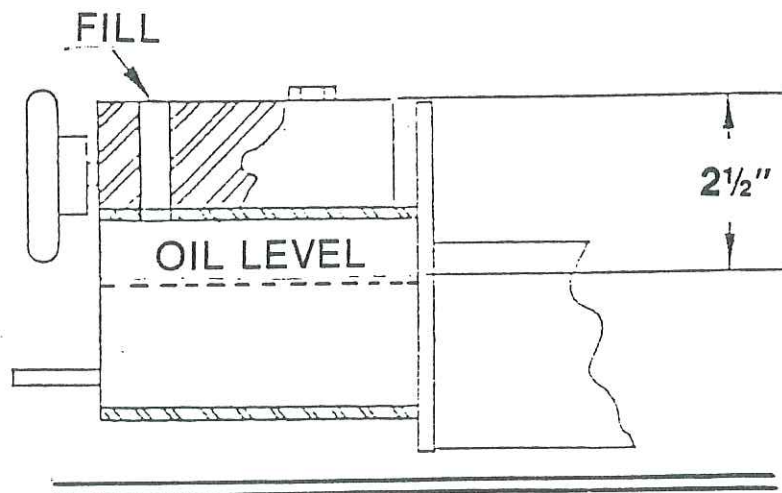
Sometimes during shipment this jack is put in such a position that it can lose its prime. If when first opening the box the handle operates freely with no resistance and the jack will not elevate, the following priming instructions should be followed:

1. Open release knob three full turns.
2. Grab lifting platform, raise to full height and let back down. Do this two or three times.
3. Close release knob and pump jack to full height and then release.

The jack should now be fully primed.

FILLING HYDRAULIC UNIT

1. Open release and allow jack to fully lower.
2. Remove one of the rear capscrews securing the pump block to the reservoir.
3. Add mobile DTE #13 or equivalent hydraulic oil to the level shown.



CAUTION

Do not back out release knob more than 3 full turns. Jack's design is such that with no load, it may be necessary to push platform down by hand. More than 3 turns may result in loss of 1/4\"/>