

Professional Service Equipment



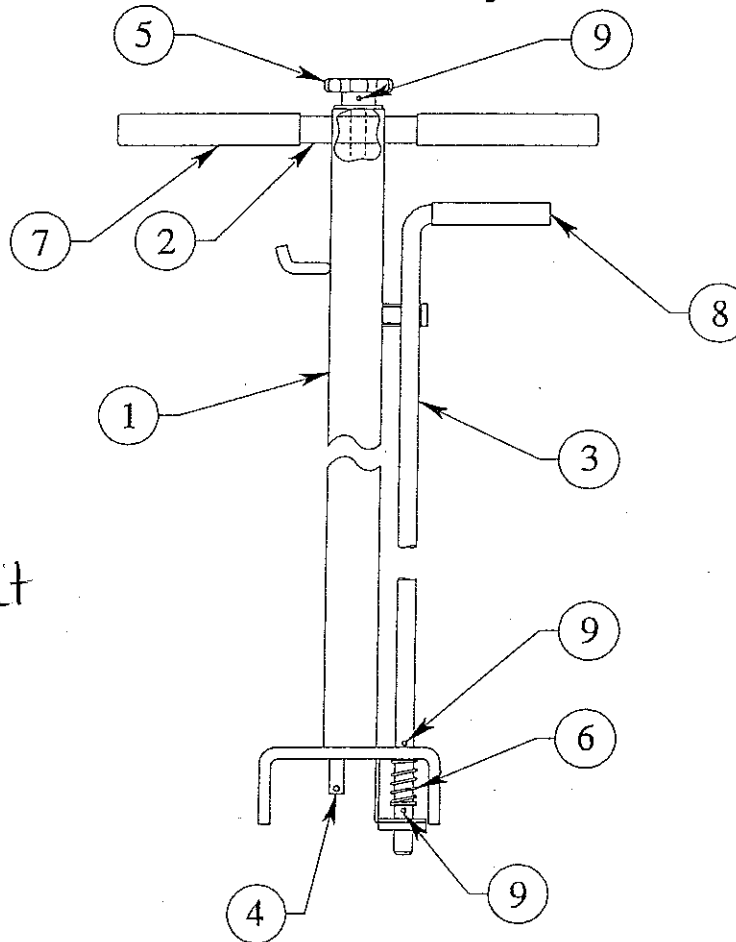
3501 S. Leonard Rd.
P.O. Box 728
St. Joseph, Missouri 64502
U.S.A.
Toll Free: (800) 821-7320
Phone: (816) 233-6121
Fax: (816) 233-7251
Email: gray@grayusa.com
www.grayusa.com

Parts List

FSJ-60A Floor Service Jack

→ 57-003601 + up

Handle Subassembly Parts List



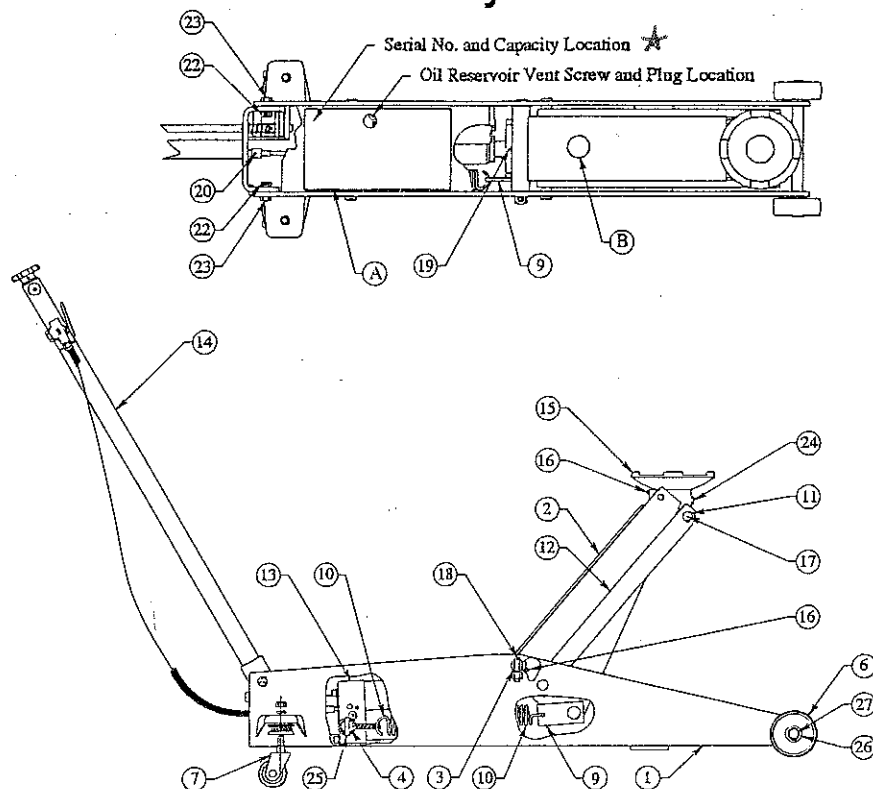
No Power Unit
Available

Item	Qty.	Part Number	Description
1	1	2-857-02005	Handle Weldment
2	1	1-850-04010	Handle Bar, Drilled
3	1	1-857-02007	Handle Release Rod Weldment
4	1	1-857-04026	Release Rod
5	1	1-232-20094	Hand Wheel, Drilled, 2-1/2 Dia.
6	1	1-233-14012	Spring, Compression, 53/64 Dia.
7	2	1-232-20114	Handle Grip, 7/8 I.D. x 5 Long
8	1	1-232-20128	Handle Grip, 5/8 I.D. x 3-1/2 Long
9	3	0-235-21011	Roll Pin, 3/16 Dia. x 1-1/8 Long



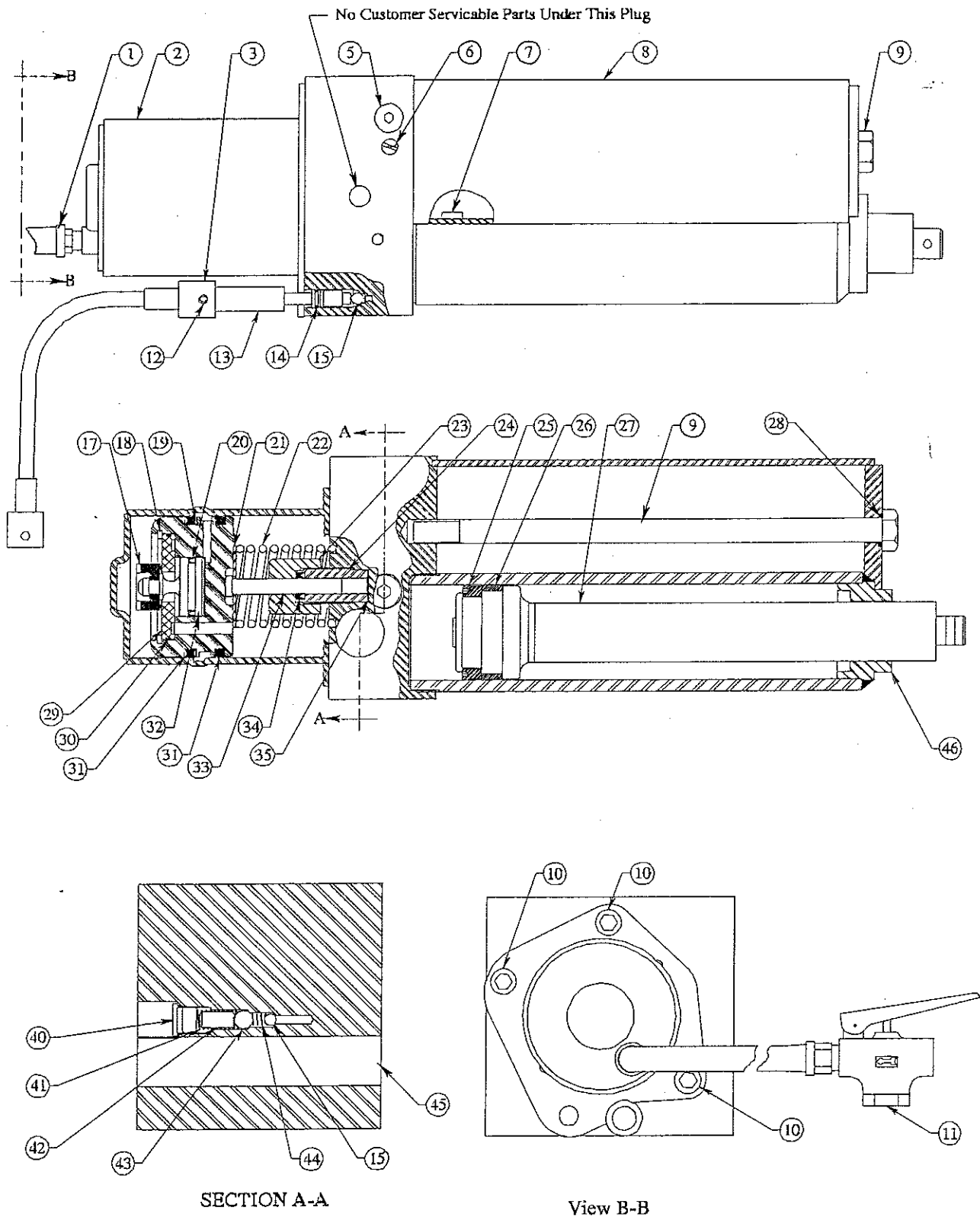
* Please have
serial number off
jack when calling
in for parts

Final Assembly Parts List



Item	Qty.	Part Number	Description
1	1	3-857-02008	Frame Weldment <i>NIA</i>
2	1	3-857-02001	Lift Arm Weldment <i>NIA</i>
3	1	1-857-04008	Pin - Pivot <i>NIA</i>
4	1	1-857-04020	Pin - Cylinder Base <i>NIA</i>
6	2	1-480-00027	Wheel, 3.850 O.D., Machined (Serial No's. 57-003601 & After)
	2	1-480-00016	Wheel & Grease Fitting Subassembly (Serial No's. 57-003600 & Before)
7	2	1-480-11029	Caster, Swivel Stem, 2-5/16 Dia. Wheel
9	1	1-857-04025	Link - Spring <i>NIA</i>
10	1	1-233-07002	Spring, Extension
11	1	1-470-23025	Shaft, Grooved Ends, 3/4 Dia. <i>NIA</i>
12	2	1-857-04010	Link - Leveling <i>NIA</i>
13	1	4-353-40053	Power Unit Assembly, FSJ-60 <i>NIA</i>
14	1	3-857-01001	Handle Subassembly (See page 14) <i>NIA</i>
15	1	2-857-04027	Lift Pad <i>NIA</i>
16	3	1-400-50000	Grease Fitting, 3/16 Drive
17	2	1-230-12001	Retaining Ring, External, 3/4" Dia.
18	1	0-235-22004	Roll Pin, 3/8 x 2
19	1	0-235-21006	Roll Pin, 3/16 x 1-1/4 <i>NIA</i>
20	1	0-235-21004	Roll Pin, 3/16 x 3/4
22	2	1-203-01403	Nut, Hex, 1/2-13 UNC, Self Locking, Steel, Plated
23	2	0-200-31407	Capscrew, Hex Head, 1/2-13 UNC, Steel, Grade 5, Plated, 1-1/4 Long
24	1	0-200-31102	Capscrew, Hex Head, 5/16-18 UNC, Steel, Grade 5, Plated, 1/2 Long
25	1	0-235-21002	Roll Pin, 1/4 Dia. x 1-1/2 Long
26	2	1-204-01804	Washer, Special, 1-3/8 O.D. x 7/8 I.D. (Serial No's. 57-003601 & After)
	2	0-204-01701	Washer, Plain, 3/4 x 18 ga. (Serial No's. 57-003600 & Before)
27	2	1-230-13002	Retaining Ring, External, 7/8" Dia. (Serial No's. 57-003601 & After)
	2	1-230-12001	Retaining Ring, External, 3/4 Dia. (Serial No's. 57-003600 & Before)
A	1	3-670-00142	Identification Placard, FSJ-60
B	1	1-670-10165	Information Placard, Made In U.S.A.

Power Unit Assembly Parts List



Power Unit Assembly Parts List is continued on page 4.

Power Unit Assembly Parts List (Continued)

Item	Qty.	Part Number	Description
1	1	1-271-02001	Hose, 1/4 I.D. x 38" Long
2	1	3-310-11024	Air Motor Cylinder Weldment
3	1	1-857-04033	Flex Shaft, FSJ-60
5	1	1-274-32001	Plug, SAE #4 W/O'Ring
6	1	1-353-49150	Vent Screw
7	1	1-353-49010	Magnet, 1/8 Dia. x 7/16 Long
8	1	1-353-41042	Reservoir Weldment <i>NIA</i>
9	1	0-200-81427	Capscrew, Hex Hd., 1/2-20 UNF, Grade 5, 9-3/4 Long
10	3	0-201-11202	Capscrew, Socket Hd., 3/8-24 UNF, Steel 1/2 Long
11	1	1-312-00002	Air Valve
12	1	0-235-21004	Roll Pin, 3/16 Dia., 3/4 Long
13	1	1-353-49172	Release Stem
14	1	0-390-00002	O'Ring, 3/8 O.D. x 1/4 I.D. x 1/16 Dia., ARP-010, 70 Duro.
15	2	0-236-00005	Ball, 1/4 Dia., 440C, Stainless Steel, Grade 25, 58 - 62 RC
17	1	2-315-00002	Seal, Shuttle Valve
18	1	1-230-06001	Retaining Ring, Internal, 2-1/8 Dia.
19	1	4-310-41017	Piston, Air Motor, Injection Molded
20	1	1-390-10076	Seal, 1-1/4 O.D. x 1" I.D. x 1/8 W
21	1	1-204-01106	Washer, 1.750 O.D. x .320 I.D. x .064
22	1	1-233-15003	Spring, Compression, 1-3/4 O.D.
23	1	1-353-43029	Pump Housing Cap
24	1 <i>OL</i>	1-353-43030 <i>353-43030</i>	Pump Housing
25	1	1-390-11088	Seal, 2 O.D. x 1-1/2 I.D. x .375
26	1	1-441-05000	Sleeve Bearing
27	1	2-353-42019	Piston Rod Weldment
28	1	0-390-00062	O'Ring, 11/16 O.D. x 1/2 I.D. x 3/32 Dia., 90 Duro, Bana - N
29	1	1-310-91014	Piston, Cap, Injection Molded
30	1	1-390-01061	O'Ring, 2-1/4 x 1/16 x 2-1/8, Nitrile Rubber, Compound 4456, 70 Duro
31	2	1-390-02010	Quad Ring, 3 O.D. x 2-5/8 I.D. x 3/16
32	1	2-310-40004	Air Shuttle Piston, Injection Molded
33	1	1-353-49156	Pump Plunger
34	1	1-390-10058	Seal, 9/16 x 5/16 x 1/8 SQB
35	1	1-390-10060	Backup Ring, 11/16 x 1/2 x .040 Thick
40	1	1-274-34001	Plug, Str. Th'd., Recessed Socket, W/O'Ring
41	1	1-233-12002	Spring, Compression, .406 O.D.
42	1	1-353-49162	Check Valve Spacer
43	1	0-236-00006	Ball, 3/8 Dia., 440C, Stainless Steel, Grade 25, RC 58-62
44	1	1-233-10007	Spring, Compression, .250 O.D.
45	1	1-353-49165	Hydraulic Block <i>NIA</i>
46	1	2-353-41040	Cylinder Weldment <i>NIA</i>

Seal Kit 8857-01004 good for SN# 57-003001 + up

FSJ-60 TROUBLE SHOOTING

PROBLEM: WILL NOT LIFT LOAD

Possible solutions:

- Vent screw is not open or is plugged. Open 1/4 turn and or remove and free blockage.
- Release stem is bent or damaged. Replace if needed
- Release knob is not tight enough. Tighten release knob.
- Check ball is missing from behind the release stem. Install 1/4" steel check ball.
- Unit is low on hydraulic fluid. Replenish with hydraulic oil only.
- Air pressure is too low. Raise the PSI going to the jack. PSI should range from 110 to 175 PSI.
- Lifting too much weight. Use a lifting device with a higher lifting capacity.
- Check balls not seating. Remove, clean and re-seat check balls.
- Seals are worn. Replace any worn parts if needed.

PROBLEM: AIR MOTOR IS STALLING

Possible solutions:

- Air pressure is too low. Raise the PSI going to the jack. PSI should range from 110 to 175 PSI.
- Air motor piston needs lubricating. Insert a few drops of air tool oil into the airline and cycle jack.
- Seals or parts are worn. Replace if needed.

PROBLEM: JACK IS SLOWLY LEAKING DOWN

Possible solutions:

- Check balls are not seating. Remove, clean and re-seat check balls.
- Check ball is missing from behind the release stem. Install 1/4" steel check ball.
- Release knob is not tight enough. Tighten release knob.
- Seals or parts are worn. Replace if needed.

HYDRAULIC FLUID LEVEL CHECKING AND FILLING PROCEDURE

1. Make sure lift arm is fully lowered and the jack is placed on a level surface.
2. Remove the plug from the hydraulic power module. It is located beneath the hole in the cover plate on the frame of the jack. Removal requires a 3/16" hex wrench. Make sure the area around the oil reservoir plug is clean and dry before removing plug.
6. Check fluid level. The oil should be visible in the hole for the reservoir plug. If fluid is low, **close the vent screw** and add a high grade hydraulic fluid equivalent to Mobile DTE #11 oil. **CAUTION:** Do not use brake or transmission fluid. Use of the wrong fluid can result in deterioration of the seals or corrosion. Do not overfill. Overfilling can occur if the lift arm is raised, the jack is not on a level surface, or the vent screw is open. Overfilling results in oil leaking from the vent screw until the oil in the reservoir reaches the proper level.
7. Reinstall and secure the fill plug and open the vent screw. Wipe up any spilled oil. Connect to air supply and test for normal operation.