

Professional Service Equipment

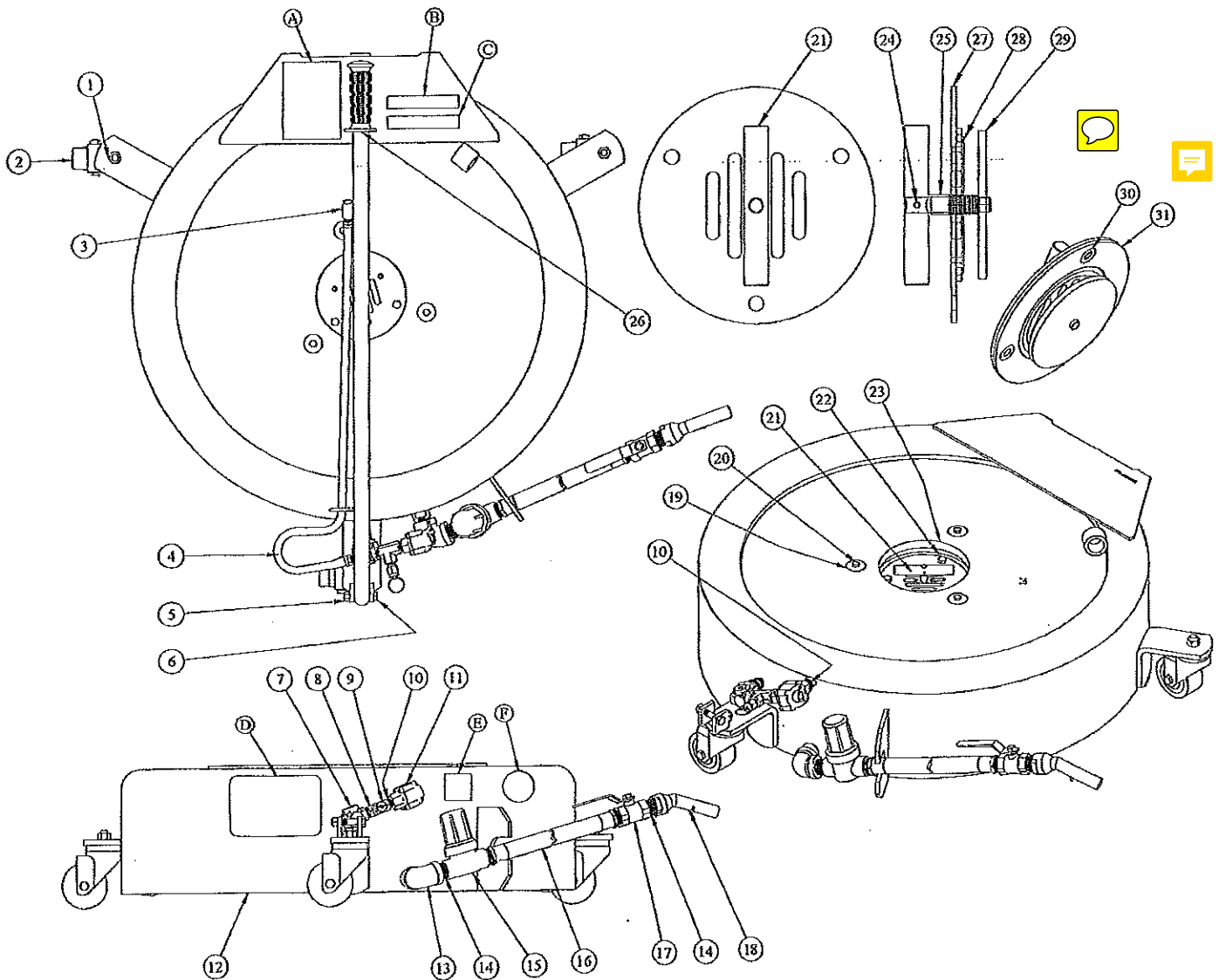


3501 S. Leonard Rd.
P.O. Box 728
St. Joseph, Missouri 64502
U.S.A.
Toll Free: (800) 821-7320
Phone: (816) 233-6121
Fax: (816) 233-7251
Email: gray@grayusa.com
www.grayusa.com

Parts List

AH-15 Antifreeze Handler

910-001394 and above







Replaceable Strainer Screen
Inside Item 15: 910-04028

Parts List

AH-15

Antifreeze Handler

Item	Qty	Name	Description
1.....	3	203-01400	Nut, Hex, 1/2-13UNC, Reg., Steel, Plated
2.....	3	480-11031	Caster, Swivel Stem, 3" Dia, Extra Heavy Duty Poly Wheel
3.....	1	910-02002	Handle Weldment
4.....	1	271-02005	Air Hose, 1/4 I.D. X 31" Long
5.....	1	203-01202	Nut, Hex, 3/8-16 UNC, Steel, Plated, Self Locking
6.....	1	200-31210	Capscrew, Hex Head, 3/8 - 16UNC, Steel, Plated, Grade 5, 2" Long
7.....	1	315-00014	Air Regulator, Pre-Set 13 - PSI
8.....	1	274-02017	Male Run Tee, 1/4 NPT
9.....	1	312-00006	Pop-Off Valve, 1/4-NPT
10.....	2	275-01041	Nipple, 1/4, Schedule 40, ASTM A120, .950" Long, Plated
11.....	1	312-01021	Quick Exhaust Valve
12.....	1	910-02004	Tank Weldment
13.....	1	275-24004	Elbow, 3/4, 90°, Malleable Iron, Plated
14.....	2	275-02003	Nipple, 3/4 NPT X 1 3/8" Long, Schedule 40, Plated
15.....	1	910-04009	In Line Filter
16.....	1	910-04013	Hose, AH-14  need to change to 911-04002
17.....	1	312-00005	Ball Valve, 3/4 NPT
18.....	1	910-04004	Nozzle, AH-14
19.....	3	204-01107	Washer, Special, 9/32 I.D. X 1 1/4 O.D. X 3/64 Thick
20.....	3	200-31003	Capscrew, Hex Head, 1/4-20 UNC, Steel, Gr. 5, Plated, 5/8" Long
★ 21.....	1	910-04043	Handle
22.....	3	200-31102	Capscrew, Hex Head, 5/16 - 18UNC, Steel, Grade 5, 1/2" Long
23.....	1	910-04011	Splash Mat, Astro Turf
★ 24.....	1	235-21035	Roll Pin, 5/32 Dia. X 5/8 Long
★ 25.....	1	910-04090	Spacer Tube  should be 910-04040
26.....	1	232-20154	Handle Grip,  X 4 3/4" Long, Black
★ 27.....	1	910-04042	Drain Cover Machined
★ 28.....	1	390-02018	O'Ring 3 1/2 O.D. X 3 1/8 I.D. X 3/16 Dia., Buna N, 50 Duro  90 - 02019
★ 29.....	1	910-02012	Seal Plate Weldment
★ 30.....	3	204-01213	Washer, Special, .625 O.D. X .375 I.D. X .050 Thick
★ 31.....	1	910-04036	Drain Cover Gasket

315-00015 air exhaust muffler

Placard List

Item	Qty	Name	Description
A.....	1	670-10337	Information Placard, Warning
B.....	1	670-10339	Information Placard, Antifreeze-Only
C.....	1	670-10340	Information Placard, Caution, Do Not Stand On Unit
D.....	1	670-00230	Identification Placard, AH-15
E.....	1	670-10176	Information Placard, Multi Language
F.....	1	670-10165	Information Placard, Made In USA

★ included in Manual Drain Cover Kit

8910-01009

will WORK on ALL AH-15 910-001000 + UP

The owner must inspect, or appoint a knowledgeable person to inspect the unit. Visual inspection should be made before each use of unit, checking for abnormal conditions. Regular inspections should be made weekly for daily use and monthly for intermittent use. Any unit which appears to be damaged in any way, is found to be badly worn, or operates abnormally shall be removed from service until necessary repairs are made.

1. Check fluid level in the unit prior to use. If not empty; refer to the "Emptying the Handler" section of this manual.
2. All warning and capacity labels should be readable and complete. Wash external surfaces of unit, labels, and decals with a mild soap solution.

Troubleshooting

This page is a list of problems and solutions. If the solution listed fails to correct the problem, call customer service at the numbers and address printed on the back cover of this manual. Please have the model number, and serial number of your unit available. The serial number is permanently stamped on the top of the drip guard.

<u>PROBLEM</u>	<u>CAUSE / SOLUTION</u>
Fluid runs out of exhaust valve.....	Unit is over filled. Empty reservoir.
Safety pop off valve continues to by-pass	Regulator is not working, unit is over pressuring. Discontinue use immediately, and call customer service at the numbers and address printed on the back cover of this manual to replace air regulator.
Fluid is slow to drain into tank	Manual valve on inlet cover not fully opened. Fully open manual valve.
Fluid overflows catch pan.....	Manual valve on inlet cover is not fully opened. Tank not emptied after last use. Close manual valve. Quick exhaust valve is not working properly. Replace the quick exhaust valve.

Notes