

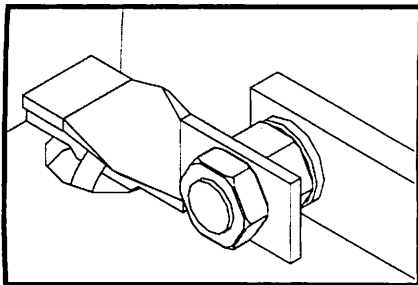


# QP-50

## Spring Repair Procedure

0-670-90237

1. **IMPORTANT:** Detach air supply line from QP-50 before beginning this repair procedure.
2. Remove the nut and bolt from the stand post and lower the crushing module from the working position to the lowered shipping position in which the module will be resting on the shipping stop tab.  
**CAUTION:** The crushing module weighs 210 lbs. and we recommend using a shop crane or lift truck to perform the lowering. **DO NOT** remove the 5/16-inch screw from top of the post.
3. Disconnect the black hose from the exhaust valve.
4. Remove the 4 bolts at the top of the QP-50.
5. Carefully tip entire unit forward and rest it on a wood block.
6. Slide power unit out and position upright.
7. **REPLACE BOTH SPRINGS.** Remove broken pieces of spring and unbroken spring.
8. Hook new springs into place.
9. Use the spring repair tool to pull the one spring high enough to slide the spring retainer bracket into place. Be sure that the spring retainer bracket is centered and securely holding the full load of the spring.
10. **Install the other spring by repeating step 9.**
11. Slide power unit back into place with the angled corners facing the front.
12. Tip entire unit back to an upright position.
13. Reinstall the 4 bolts to secure the power unit.
14. Place the spring stops on the bolts closest to the springs so that the springs are covered.
15. Secure spring stops with jam nuts.



## QP-50

### Spring Repair Kit

ITEM	QTY	PART NUMBER	DESCRIPTION
1	2	2-865-04026	Spring Stop
2	2	0-203-11701	Nut, Hex, Jam, 3/4-10 UNC
3	2	1-233-07004	Spring, Extension, 1 11/16 OD, 9" Long
4	1	1-670-60119	Spring Tool

