



# Fleetline

## 1-1/2 TON CAPACITY PROFESSIONAL LOW PROFILE TRANSMISSION JACK

# 53-424

OPERATING

INSTRUCTIONS PARTS LIST

WARRANTY



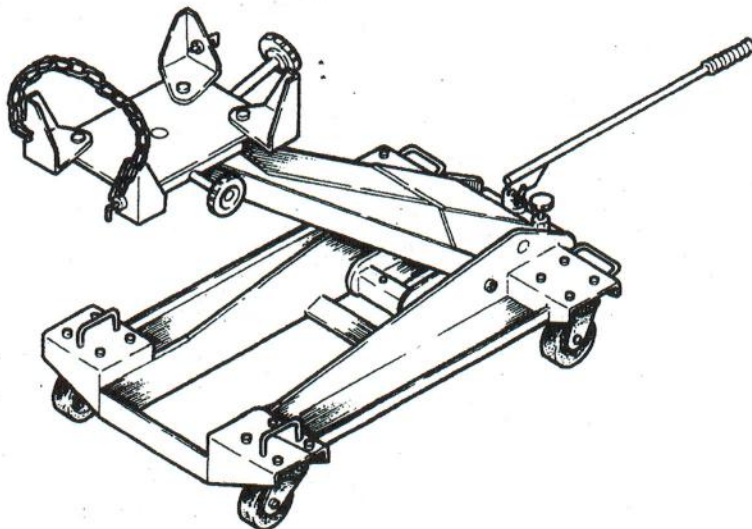
### WARNING:



#### For Your Safety & To Prevent Injury

1. The vehicle should be properly supported before starting repairs.
2. The use of this jack with recommended adaptors should be limited to the removal, installation and transportation of the transmission in the lowered position.
3. DO NOT overload the jack beyond its rated capacity.
4. Always use the chains to secure load on saddle.
5. Use jack only on hard, level surfaces capable of sustaining the load.
6. Make sure weight is evenly distributed.
7. Owner and/or operator shall have an understanding of all operating instructions and warnings before operating the jack.
8. Failure to heed these warnings may result in personal injury and/or property damage.

Meets or exceeds ANSI standard for performance and safety.



### OWNER'S RESPONSIBILITY

The owner and/or operator shall have an understanding of these operating instructions and warnings before operating the jack. Warning information shall be emphasized and understood. If the operator is not fluent in English, the instructions and warnings shall be read to and discussed with the operator in operator's native language by the purchaser/owner, making sure that the operator comprehends its contents.

This jack is designed for transmission and installation of automobile and light truck component parts. The instructions must be carried out conscientiously in order to operate the jack safely and properly.

#### Operating Procedure:

##### 1. Exhausting:

During shipment and handling, especially after a long storage, air probably gets into the hydraulic system, causing poor lifting performance. So exhaust any air from the system before use.

- a) Close release valve (turn knob clockwise). Loosen the air vent plug on the reservoir, then operate the handle until the empty saddle gets to the highest position.
- b) Open the release valve (turn knob counterclockwise). While

holding the empty saddle down, operate handle rapidly several times in order to exhaust the air in the system, then press air vent plug tightly.

##### 2. Lifting:

- a) Turn the knob clockwise until release valve closes. Do not overtighten the valve.
- b) Place jack center directly under object to be lifted. Operate handle up and down within an angle of 60°. The jack can take up load immediately.

While lifting very heavy objects, the angle to operate must be within the limits of 45° so as to avoid damaging parts with the rapid increase of the operating force. (Full 360° rotating pump handle operates in any position).

- c) After raising jack to required height, use jack stand to hold load.

##### 3. Transmission:

- a) Secure load tightly on the saddle with chains.
- b) Turn the release valve knob counterclockwise in order to lower the load to a lower position (about at the midpoint of the whole lifting height).

### 1 YEAR LIMITED WARRANTY

Myers' Tire Supply warrants this equipment to the original user against defective material or workmanship for a period of 90 days from the date of purchase on repair parts and labor. This defective product will be repaired or replaced, at Myers' option, at no charge, when returned to an authorized Myers' representative, postage or freight prepaid with proof of purchase or warranty card. *This warranty shall not apply to equipment or parts which have been altered, damaged, misused, abused or improperly maintained.*

The foregoing obligation is Myers' sole liability and your sole remedy under this warranty. **There are no other warranties, expressed or implied, including those of merchantability or fitness for purpose applicable to Myers' tools or parts. Under no circumstances shall Myers' be liable for any special, incidental or consequential damages of any nature arising from the sale or use of the tool, whether in contract, tort, or otherwise.**

**Note:** Some states do not allow the exclusion or limitations of incidental or consequential damages, so the above limitations may not apply to you.

This warranty gives you specific legal rights. You may also have other rights which vary from state to state or outside the U.S.A.



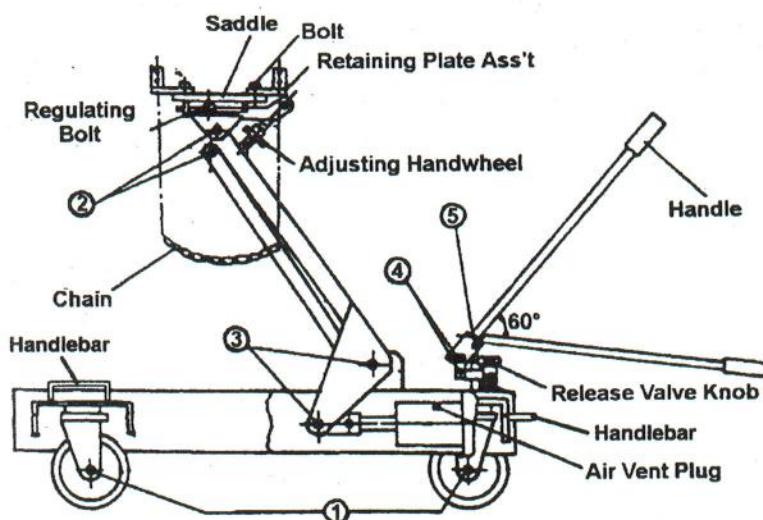
## Fleetline

Lifting Equipment

DISTRIBUTED BY:  
**MYERS TIRE SUPPLY**  
Akron, Ohio

MADE IN CHINA





## Specifications

|                            |                       |
|----------------------------|-----------------------|
| RATED CAPACITY:            | 1-1/2 TON / 3000 LBS. |
| SADDLE HEIGHT (MAX.):      | 37-1/4"               |
| SADDLE HEIGHT (MIN.):      | 9-3/8"                |
| HYDRAULIC LIFT:            | 28"                   |
| SADDLE TILT (FORWARD):     | 30 DEGREES            |
| SADDLE TILT (BACKWARD):    | 15 DEGREES            |
| SADDLE TILT (LEFT/ RIGHT): | 12 DEGREES            |
| OVERALL LENGTH:            | 44-1/2"               |
| OVERALL HEIGHT:            | 11-3/8"               |
| OVERALL WIDTH:             | 25-1/2"               |
| NET WEIGHT:                | 300LBS.               |

c) The four handlebars on jack are used to move jack in any direction on level solid surface.

## 4. Saddle Adjusting:

For safe and proper use, the saddle can be adjusted according to the load base size and angle degree.

a) Loosen the four bolts on saddle, adjust the four retaining plate assemble parts to their proper position, then twist bolts tightly. The saddle side adjustment is within the limits as shown in the specifications.

b) Adjust the two regulating bolts on the saddle, then the saddle can be side tilted within the limits as shown in the specifications. The two bolts must be adjusted simultaneously in order to let the saddle stay in required angle and not swav.

Turn the adjusting handwheel under saddle. The saddle then can be tilted within the limits from forward to back and Left & Right as shown in the specifications.

## 5. Lowering:

Turn the knob counterclockwise until release valve opens. Saddle automatically lowers to its original position. Do not open release valve too fast, or saddle will go down quickly and do damage to load.

## 6. Oiling:

If jack needs re-oiling, please follow the methods below:

Take out the air vent plug, inject machine hydraulic oil into the plug. At the same time operate the handle for 3-5 times in order to guarantee the inner hydraulic system is full of oil. When oil is on a level with the edge under the oil-filling hole, stop oiling and press the air vent plug tightly.

## 7. Maintenance instruction:

a) Before operating the jack, lubricate points (1) - (5) indicated in the diagram.

-Wheels: Use light oil on axles and caster bearings.

-Saddle and linkage: Use light oil on all moving and pivoting parts.

-Lifting arm: Inject grease into moving parts.

-Handle: Use light oil on moving parts.

-Linkage between handle and plunger: Use grease to lubricate it.

b) Check the hydraulic system: Every 4 months to make sure it is free from corrosion. If corrosion is present, clean the parts and remove rust, then re-oil according to the above mentioned oiling method. Always use good quality hydraulic jack oil. Do not mix the type of oil. When filling with hydraulic oil do not permit dirt or any other substance to enter the hydraulic system.

c) Always store the jack with saddle fully lowered and with release valve open.

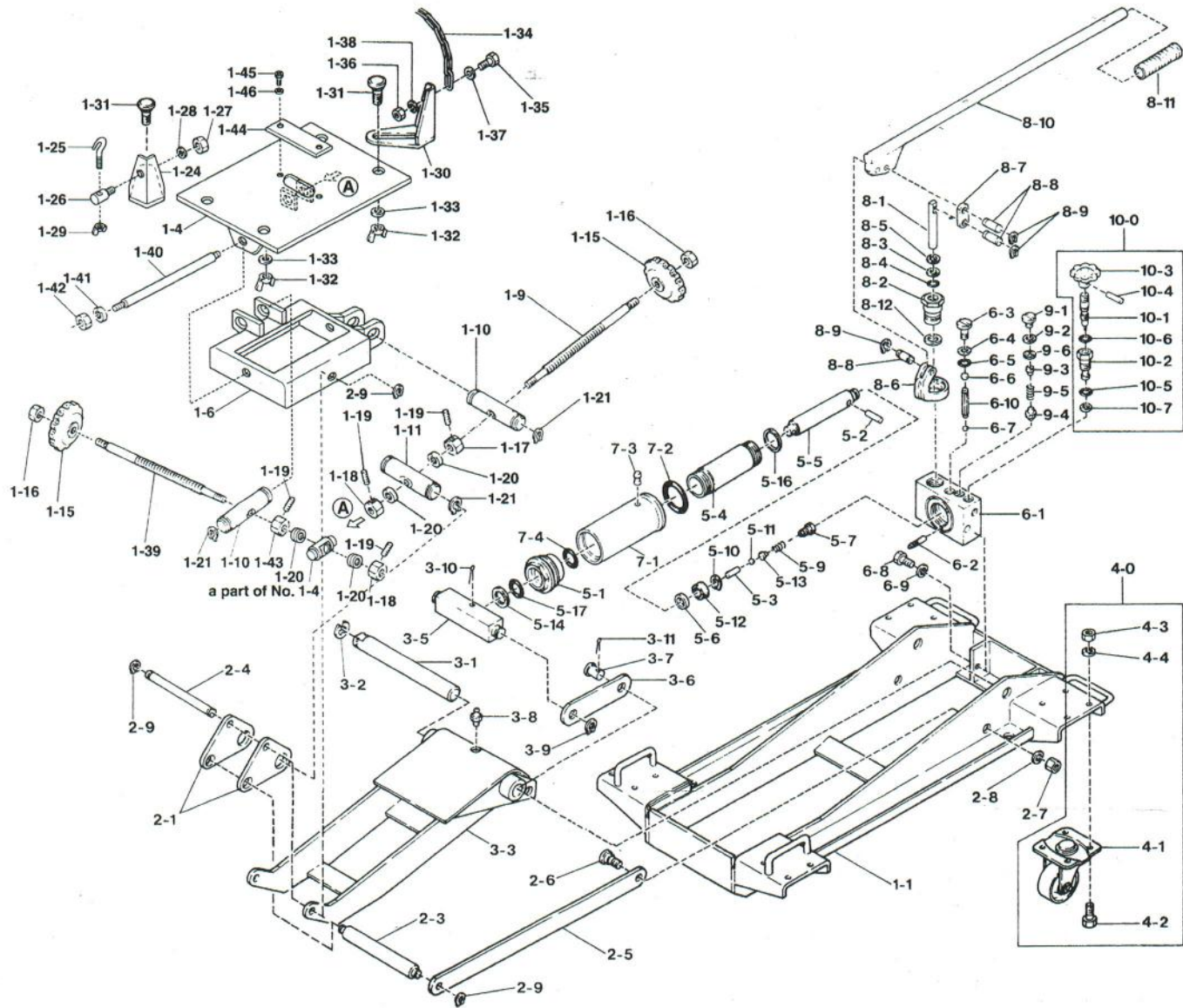
## Troubleshooting

| Problem              | Possible Causes   | Remedy   |
|----------------------|---|--|
| Does not lift at all | 1) No hydraulic oil<br>2) Release valve opened<br>3) Defective suction valve and delivery valve<br>4) Defective packing | 1) Fill hydraulic oil<br>2) Close release valve<br>3) Clean dust or sludge<br>4) Replace packing |
| Lifts only Halfway   | 5) Lack of hydraulic oil<br>6) Excess of hydraulic  | 5) Fill hydraulic oil<br>6) Pull out hydraulic oil   |
| Will not hold load   | 7) Improper contact of suction valve, delivery valve & by-pass valve<br>8) Worn out piston packing                      | 7) Clean and adjust all contact valves<br>8) Replace piston packing                              |
| Does no lower        | 9) Release valve blocked by foreign material  | 9) Clean release valve   |
| Poor lifting         | 10) Defective pump packings and/or incorrect valving  | 10) Clean valves replace packings, replace hydraulic oil   |

For more information regarding the maintenance and use of this unit call: 1-800-820-7236



# PARTS BREAKDOWN



| PART # | DESCRIPTION           | QTY |
|--------|-----------------------|-----|
| 1-1    | Frame                 | 1   |
| 1-4    | Plate                 | 1   |
| 1-6    | Tilting saddle        | 1   |
| 1-9    | Screw                 | 1   |
| 1-10   | Pin with female screw | 1   |
| 1-11   | Pin                   | 1   |
| 1-15   | Grip                  | 2   |
| 1-16   | Nut                   | 2   |
| 1-17   | Collar                | 2   |
| 1-18   | Collar                | 2   |
| 1-19   | Set screw             | 7   |
| 1-20   | Thrust bearing        | 4   |
| 1-21   | Snap ring             | 4   |
| 1-24   | Bracket(LH)           | 2   |
| 1-25   | Hook with thread      | 2   |
| 1-26   | Pin for hook          | 2   |
| 1-27   | Nut                   | 2   |
| 1-28   | Spring washer         | 2   |

| PART # | DESCRIPTION       | QTY |
|--------|-------------------|-----|
| 1-29   | Wing nut          | 2   |
| 1-30   | Bracket(RH)       | 2   |
| 1-31   | Bolt              | 4   |
| 1-32   | Wing nut          | 4   |
| 1-33   | Washer            | 4   |
| 1-34   | Chain             | 2   |
| 1-35   | Bolt              | 2   |
| 1-36   | Nut               | 2   |
| 1-37   | Washer            | 2   |
| 1-38   | Spring washer     | 2   |
| 1-39   | Screw             | 1   |
| 1-40   | Shaft for tilting | 1   |
| 1-41   | Washer            | 2   |
| 1-42   | U type nut        | 2   |
| 1-43   | Nut               | 3   |
| 1-44   | Cover             | 1   |
| 1-45   | Screw             | 2   |
| 1-46   | Spring washer     | 2   |

| PART # | DESCRIPTION          | QTY |
|--------|----------------------|-----|
| 2-1    | Arm connecting joint | 2   |
| 2-3    | Link rod pin         | 1   |
| 2-4    | Arm pin              | 1   |
| 2-5    | Link rod             | 2   |
| 2-6    | Link rod pin         | 2   |
| 2-7    | Nut                  | 2   |
| 2-8    | Spring washer        | 2   |
| 2-9    | Snap ring            | 4   |
| 3-1    | Arm pin              | 1   |
| 3-2    | E-type ring          | 1   |
| 3-3    | Arm                  | 1   |
| 3-5    | Connecting joint     | 1   |
| 3-6    | Tension rod          | 2   |
| 3-7    | Tension rod pin      | 2   |
| 3-8    | Grease nipple        | 1   |
| 3-9    | Snap ring            | 2   |
| 3-10   | Cotter pin           | 1   |
| 3-11   | Cotter pin           | 2   |



| PART # | DESCRIPTION     | QTY |
|--------|-----------------|-----|
| 4-0    | Castor ass'y    | 4   |
| 4-1    | Caster          | 4   |
| 4-2    | Bolt            | 16  |
| 4-3    | Nut             | 16  |
| 4-4    | Spring washer   | 16  |
| 5-1    | Tank nut        | 1   |
| 5-2    | By-pass bar     | 1   |
| 5-3    | Needle roller   | 1   |
| 5-4    | Cylinder        | 1   |
| 5-5    | Piston rod      | 1   |
| 5-6    | Packing seat    | 1   |
| 5-7    | By-pass screw   | 1   |
| 5-9    | Spring          | 1   |
| 5-10   | Snap ring       | 1   |
| 5-11   | Steel ball      | 1   |
| 5-12   | U-type packing  | 1   |
| 5-13   | Spring receiver | 1   |
| 5-14   | Oil seal        | 1   |
| 5-16   | Copper packing  | 1   |
| 5-17   | "O" ring        | 1   |

| PART # | DESCRIPTION   | QTY |
|--------|---------------|-----|
| 6-1    | Oil box       | 1   |
| 6-2    | Oil strainer  | 1   |
| 6-3    | Cap plug      | 1   |
| 6-4    | Back-up ring  | 1   |
| 6-5    | "O" ring      | 1   |
| 6-6    | Steel ball    | 1   |
| 6-7    | Steel ball    | 1   |
| 6-8    | Bolt          | 2   |
| 6-9    | Spring washer | 2   |
| 6-10   | Separrator    | 1   |
| 7-1    | Oil tank      | 1   |
| 7-2    | "O" ring      | 1   |
| 7-3    | Cap           | 1   |
| 7-4    | "O" ring      | 1   |
| 8-1    | Pump plunger  | 1   |
| 8-2    | Plunger guide | 1   |
| 8-3    | Back-up ring  | 1   |
| 8-4    | "O" ring      | 1   |
| 8-5    | Oil seal      | 1   |
| 8-6    | Lever branket | 1   |

| PART # | DESCRIPTION         | QTY |
|--------|---------------------|-----|
| 8-7    | Link                | 2   |
| 8-8    | Pin                 | 3   |
| 8-9    | Snap ring           | 6   |
| 8-10   | Lever               | 1   |
| 8-11   | Knob                | 1   |
| 8-12   | Copper packing      | 1   |
| 9-1    | Cap plug            | 1   |
| 9-2    | Packing             | 1   |
| 9-3    | Spring seat         | 1   |
| 9-4    | Safety valve        | 1   |
| 9-5    | Spring              | 1   |
| 9-6    | Paking              | 1   |
| 10-0   | Release valve ass'y | 1   |
| 10-1   | Release valve       | 1   |
| 10-2   | Release valve guide | 1   |
| 10-3   | Release valve grip  | 1   |
| 10-4   | Spring pin          | 1   |
| 10-5   | "O" ring            | 1   |
| 10-6   | "O" ring            | 1   |
| 10-7   | Copper packing      | 1   |

## REPAIR KIT

| PART # | DESCRIPTION              | QTY |
|--------|--------------------------|-----|
| 5-12   | U-type packing           | 1   |
| 5-16   | Copper packing           | 1   |
| 6-5    | "O" ring                 | 1   |
| 6-6    | Steel ball               | 1   |
| 6-7    | Steel ball               | 1   |
| 7-2    | "O" ring                 | 1   |
| 8-3    | Back-up ring             | 1   |
| 8-4    | "O" ring                 | 1   |
| 8-5    | Oil seal                 | 1   |
| 8-9    | Snap ring                | 6   |
| 8-12   | Copper packing           | 1   |
| 10-5   | "O" ring(1 pieces)       | 1   |
| 10-6   | "O" ring(1 pieces)       | 1   |
| 10-7   | Copper packing(1 pieces) | 1   |