



PARTS SHEET  
 MODEL 5-33  
 CAPACITY ¼ TON  
 MAY 1, 1959

## FRANCHISED SERVICE DEPOTS

Alabama	Southern Jack Company, 615 N. Ninth Street	Birmingham 4
Arizona	Alemite Stewart Warner, 526 N. Third Avenue	Phoenix
Arkansas	Alexander Inc., 1723 East Capitol	Little Rock
California	Kimmerle Brothers, 2300 S. Hill Street	Los Angeles
	Kimmerle Brothers, 226 Eleventh Street	San Francisco 3
	Kimmerle Brothers, 2230 Inyo Street	Fresno
	Sam Podler Hydraulic Jack Service, 2260 National Avenue	San Diego 13
Colorado	Quinn & McGill, 437 Broadway, Box 1498	Denver 1
Connecticut	A & L Hydraulic Jack Company, 294 Kimberly Avenue	New Haven 11
Florida	Miami Equipment Repair Company, 1927 N. W. 36th Street	Miami
	Jansen Hydraulic Service, 263 Park Street	Jacksonville
	Liston Auto Machine & Grinding Service, 115 W. 7th Ave.	Tampa
	Equipment Service Company, 352 Techwood Drive, N.W.	Atlanta
Georgia	Savannah Jack Co., 306 W. McDonough St.	Savannah
	Turner & Cole, 353 W. Peachtree Street, N.E.	Atlanta 8
	Hydraulic Jack & Equipment Service, 4449 Chinden Blvd.	Boise
Idaho	Chicago Jack Service, 7848 S. Hermitage Avenue	Chicago 20
Illinois	Servall Engineering Company, 3939 N. Kedzie Avenue	Chicago 18
	Bemis Hydraulic Jack & Equipment Co., 1426 N.E. Adams	Peoria
Indiana	White-Evans Jack Service, 38 Shelby Street	Indianapolis
	A.B.C. Specialty Co., 1075 Kenwood Ave.	Fort Wayne
Iowa	King Motor Service, 323 E. 4th Street	Davenport
	Turner's Hydraulic Service, 1617 Sixth Avenue	Des Moines 14
Kansas	Wichita Hydraulic Service, 148 No. Water Street	Wichita
Kentucky	Queen Hydraulic, 13th and Rowan Streets	Louisville 3
Louisiana	Boerman Precision Machine Works, 2021 Thalia Street	New Orleans 3
Maryland	Holdridge Engineering Company, 1728-30 Lamont Avenue	Baltimore 2
Massachusetts	Boston Hydraulic Sales & Service, 1182 Columbus Avenue	Roxbury Crossing
Michigan	Hydraulic Service, Inc., 436 Bond Avenue, N.W.	Grand Rapids
	Hydraulic Jack Service Co., 3636 Buchanan Avenue, S.W.	Grand Rapids 8
	Hydraulic Service, Inc., 2715 Fifth at Grand River	Detroit 1
Minnesota	Hydraulic Jack & Equipment Serv. Co., 26th & Aldrich Ave.	Minneapolis
Mississippi	Whit's Hydraulic Service, 1313-15 S. Callatin Street	Jackson
Missouri	Hydraulic Service Company, 3739 Woodland	Kansas City 3
	Equipment Service Company, 3218 Delmar Blvd.	St. Louis 3
Montana	Denison Machine Company, 427 St. Johns Avenue	Billings
Nebraska	American Auto Service, 1116-18 Jackson Street	Omaha 8
New Jersey	Metro Hydraulic Jack Company, 237 Oliver Street	Newark
New Mexico	Wheels & Brakes, Inc., 1600 Second, N.W.	Albuquerque
New York	Buffalo Hydraulic Jack Service, 1675 Broadway	Buffalo 12
	Equipment Custom Serv. Corp., 601 W. 47th St. at 11th Ave.	New York 19
	Ace Hydraulic Service, Inc., 417 Wyoming Street	Syracuse 4
	Duplex Equipment Company, 206 S. McBride	Syracuse
	Metro Hydraulic Jack Service, 5200 Foster Avenue	Brooklyn 3
	Albany Hyd. & Lube Serv., Columbia Turnpike, P.O. Box 14	Rensselaer
North Carolina	Carolina Jack Service, 1200 Asheboro	Greensboro
	Diesel Injection & Hydraulic Service, 122 Atando	Charlotte
Ohio	Eureka Tool & Hydraulic Service, 3816 N. Bend Road	Cincinnati 11
	Ohio Hydraulic Jack Service Co., 330 N. Arlington Street	Akron 5
	Ohio Hydraulic Service Company, 3826 Payne Avenue	Cleveland 11
	Hydraulic Service, Inc., 14 N. Huron Street	Toledo
	Ohio Hydraulic Service of Columbus, Rear 106-110 N. Grant	Columbus 15
Oklahoma	Hydraulic Equipment Company, 417 W. California	Oklahoma City
	Hydraulic Equipment Service, 2221 S. W. Blvd.	Tulsa 7
Oregon	Equipment Service Company, 1014 N.W. Hoyt Street	Portland
Pennsylvania	Equipment Service Company, 1921 Callowhill Street	Philadelphia
	J & M Hydraulic Service, 4063 Liberty Avenue	Pittsburgh 24
South Carolina	Columbia Hydraulics, Highway 387	West Columbia
Tennessee	Alcott Lubrication Sales & Service, 336 Court Street	Memphis 3
	The Southern Company, Georgia & Hernando Streets	Memphis 2
	White Equipment Service, 929 Granada Street	Nashville
Texas	Ace Equipment Repairs, Inc., 3006 Canton St.	Dallas 26
	Hydraulic Equipment Service Co., 1021 N. San Jacinto St.	Houston
	Hydraulic Equipment Service, 346 Avenue "H"	Lubbock
	Instrument Service Company, 1013 Avenue "B"	San Antonio 2
Utah	Wilson's Transport Supply, 665 South State Street	Salt Lake City 1
Virginia	Petroleum Engineering, 5520 Virginia Beach Blvd.	Norfolk
	Moore's Jack & Equipment Company, 1009 W. Broad Street	Richmond 20
	Excelweld Company of Roanoke, Route #4	Roanoke
Washington	Universal Repair Shop, 1611 Boylston Avenue	Seattle 22
	Carburetor & Electric Company, 221 Monroe Street	Spokane
West Virginia	CCC Hydraulic Service, 613 Tennessee Ave.	Charleston 2
Wisconsin	Hader Industries, 1246 N. Sixth Street	Milwaukee

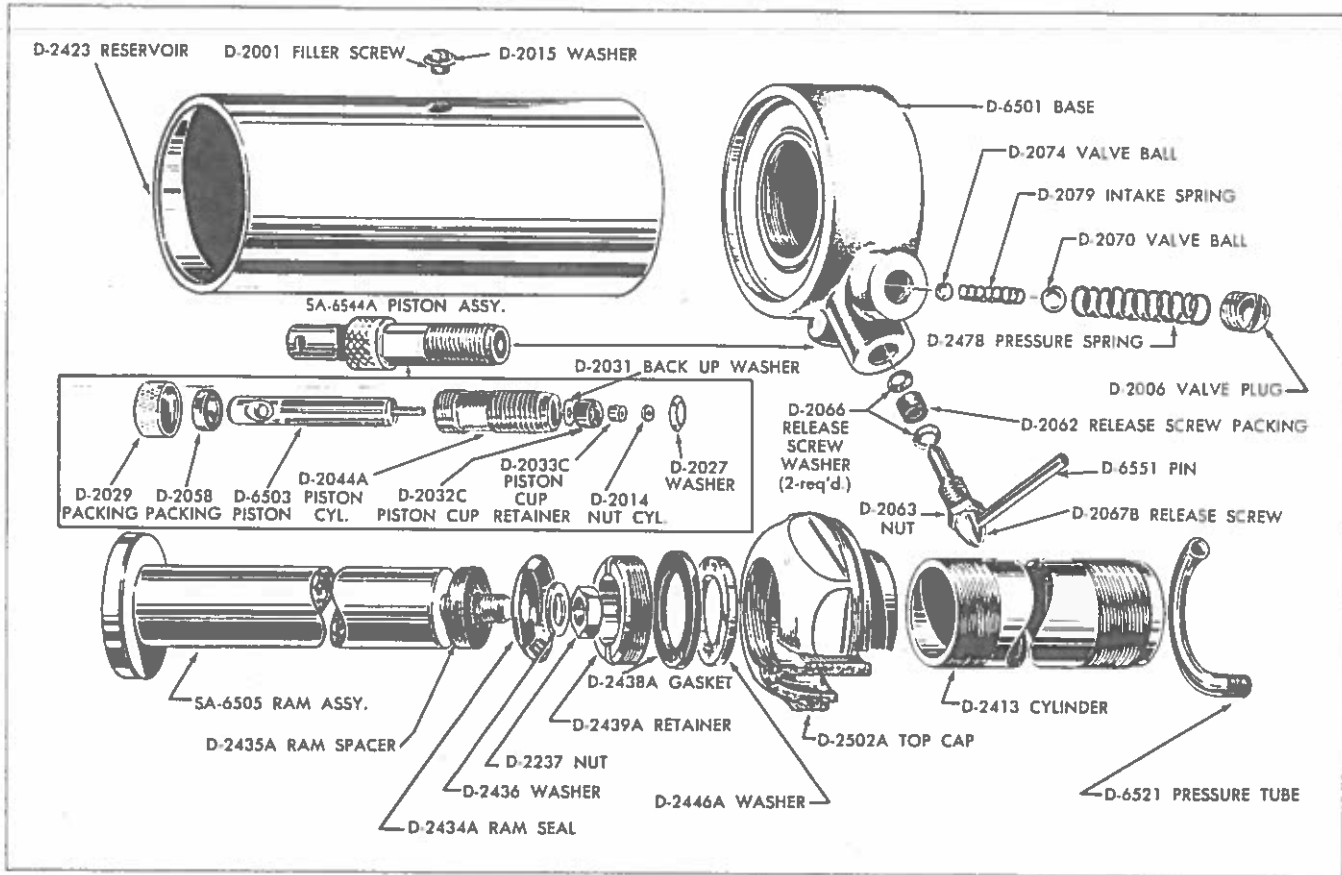
### WARRANTY

These jacks are fully guaranteed against defective material and workmanship when submitted or shipped prepaid to the nearest franchised service depot or the factory, ninety days from the date of delivery to the user. This warranty does not cover jacks that have been altered or attachments added to them which are not recommended by the manufacturer. The use of hydraulic brake or shock absorber fluid, alcohol, Kerosene or other deleterious fluids voids this warranty as does improper use of jacks through overloading or any other abusive practice or accident.

# PARTS LIST

## SA-6501 POWER UNIT

(USED ON JACKS WITH SERIAL NO. 65-001 TO 65-835)



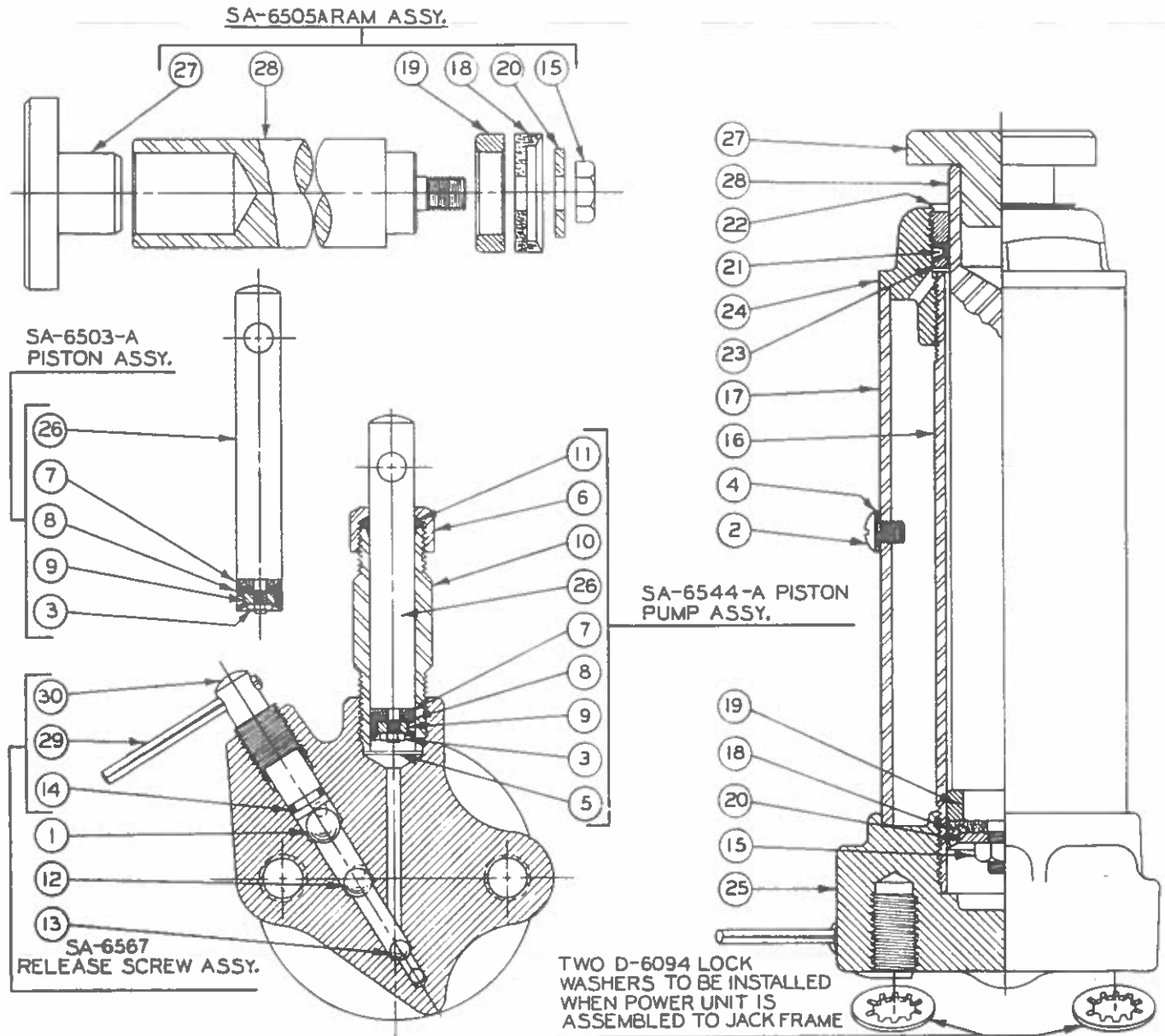
### PARTS LIST FOR FLOOR MODEL TRANSMISSION HANDLER

Part No.	Part Name	Price Each	Part No.	Part Name	Price Each	Part No.	Part Name	Price Each
D-2001	Filler Screw	.02	D-2063	Packing Nut	.12	D-2438B	Ram Packing	.20
D-2006	Valve Plug	.09	D-2066	Release Screw Washer (2)	.01	D-2439B	Ram Packing Nut	.48
D-2014	Piston Cup Nut	.01	D-2067B	Release Screw	.26	D-2446A	Ram Packing Washer	.14
D-2015	Filler Screw Washer	.02	D-2070	Valve Ball 5/16"	.04	D-2478	Valve Spring	.08
D-2027	Washer	.02	D-2074	Valve Ball 7/32"	.02	D-2502A	Reservoir Head	2.16
D-2029	Packing Nut	.12	D-2079	Valve Spring	.01	D-6501	Base Casting	8.62
D-2031	Backup Washer	.06	D-2237	Ram Cup Nut	.02	D-6503	Piston	.40
D-2032C	Piston Cup	.14	D-2413	Ram Cylinder	3.12	D-6505	Ram	1.94
D-2033C	Piston Cup Retainer	.04	D-2423	Reservoir	1.58	D-6521	Intake Tube	.70
D-2044A	Piston Cylinder	.76	D-2434A	Ram Cup	.50	D-6551	Release Screw Lever	.37
D-2058	Piston Packing	.06	D-2435A	Ram Spacer	.16	SA-6503	Piston Assembly	.65
D-2062	Release Screw Packing (2)	.04	D-2436	Washer	.02	SA-6505	Ram Assembly	3.00
						SA-6544A	Piston Pump Assembly	1.60

# PARTS LIST

## SA-6501-A1 POWER UNIT

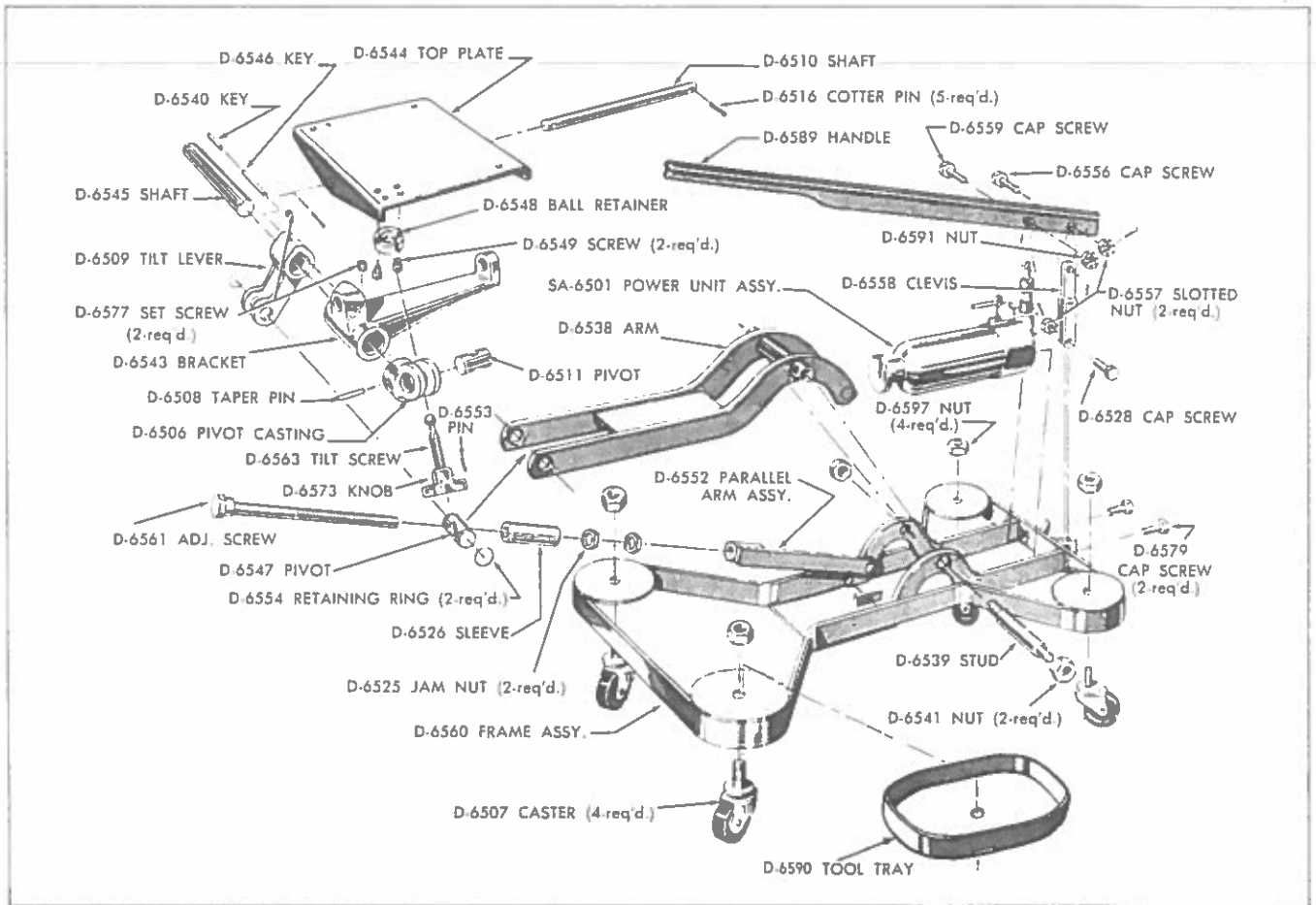
(Use with Serial Numbers 65-836 and above)



### PARTS LIST FOR FLOOR MODEL TRANSMISSION HANDLER

Item Number	Part No.	Part Name	Price Each	Item Number	Part No.	Part Name	Price Each	Item Number	Part No.	Part Name	Price Each
1	D-2075	13 32 Dia. Ball	.08	13	D-2074	7/32 Dia. Ball	.02	26	D-6503A	Pump Piston	.40
2	D-2001	Filler Screw	.02	14	D-2099-6	"O" Ring	.06	27	D-6504	Ram Head	1.56
3	D-2014	Piston Cup Nut	.01	15	D-2237	Ram Cup Nut	.02	28	D-6505A	Ram	1.94
4	D-2015	Filler Plug Washer	.02	16	D-2413	Ram Cylinder	3.12	29	D-6571	Lever	.06
5	D-2027	Piston Cylinder Washer	.02	17	D-2423	Reservoir	1.58	30	D-2057S	Release Screw	.30
6	D-2029	Piston Packing Nut	.12	18	D-2434A	Ram Cup	.50	<b>ASSEMBLIES</b>			
7	D-2031	Piston Cup Backup Washer	.06	19	D-2435A	Ram Spacer	.16	SA-6505A		Ram Assembly	3.00
8	D-2032C	Piston Cup	.14	20	D-2436	Ram Cup Retainer	.02	SA-6503A		Piston Assembly	.65
9	D-2033C	Piston Cup Retainer	.04	21	D-2438B	Ram Packing	.20	SA-6544A		Piston Pump Assembly	1.60
10	D-2044A	Pump Cylinder	.76	22	D-8039B	Ram Packing Nut	.68	SA-6567		Release Screw Assembly	.50
11	D-2058	Pump Wiper	.06	23	D-2446B	Ram Packing Washer	.14	SA-6501A1		Power Unit Assembly	30.00
12	D-2070	5 16 Dia. Ball	.04	24	D-2502A	Head	2.16				
				25	D-6501A	Base	8.62				

# PARTS LIST



## PARTS LIST FOR FLOOR MODEL TRANSMISSION HANDLER

Part No.	Part Name	Price Each	Part No.	Part Name	Price Each	Part No.	Part Name	Price Each
SA-6501	Power Unit Assembly	30.00	D-6541	Hex Nut (2)	.11	D-6558	Clevis	1.28
D-6506	Pivot Casting	2.55	D-6543	Universal Bracket	5.36	D-6559	Hex Head Cap Screw	.08
D-6507	Caster (4)	2.44	D-6544	Top Plate	4.68	D-6560	Frame Assembly	41.97
D-6508	Taper Pin	.18	D-6545	Shaft	1.93	D-6561	Adjusting Screw	2.39
D-6509	Forward Tilt Lever	4.70	D-6546	Key	.26	D-6563	Tilt Screw	1.13
D-6510	Shaft	.85	D-6547	Pivot	.99	D-6573	Handle Knob	1.06
D-6511	Pivot	.89	D-6548	Ball Retainer	1.60	D-6577	Socket Set Screw (2)	.27
D-6516	Cotter Pin (5)	.03	D-6549	Socket Cap Screw (2)	.29	D-6579	Hex Head Cap Screw (2)	.23
D-6525	Jam Nut (2)	.21	D-6552	Parallel Arm Assembly	1.58	D-6590	Tool Tray (2)	1.95
D-6526	Sleeve	1.18	D-6553	Taper Pin	.10	D-6589	Pump Handle Assembly	3.51
D-6528	Sex Cap Screw	.18	D-6554	Retaining Ring (2)	.11	D-6591	Hex Nut (2)	.06
D-6538	Arm Assembly	18.90	D-6556	Hex Cap Screw	.18	D-6597	Hex Nut (4)	.11
D-6539	Stud Pivot Arm	1.46	D-6557	Hex Slotted Nut	.06			
D-6540	Key	.24						