

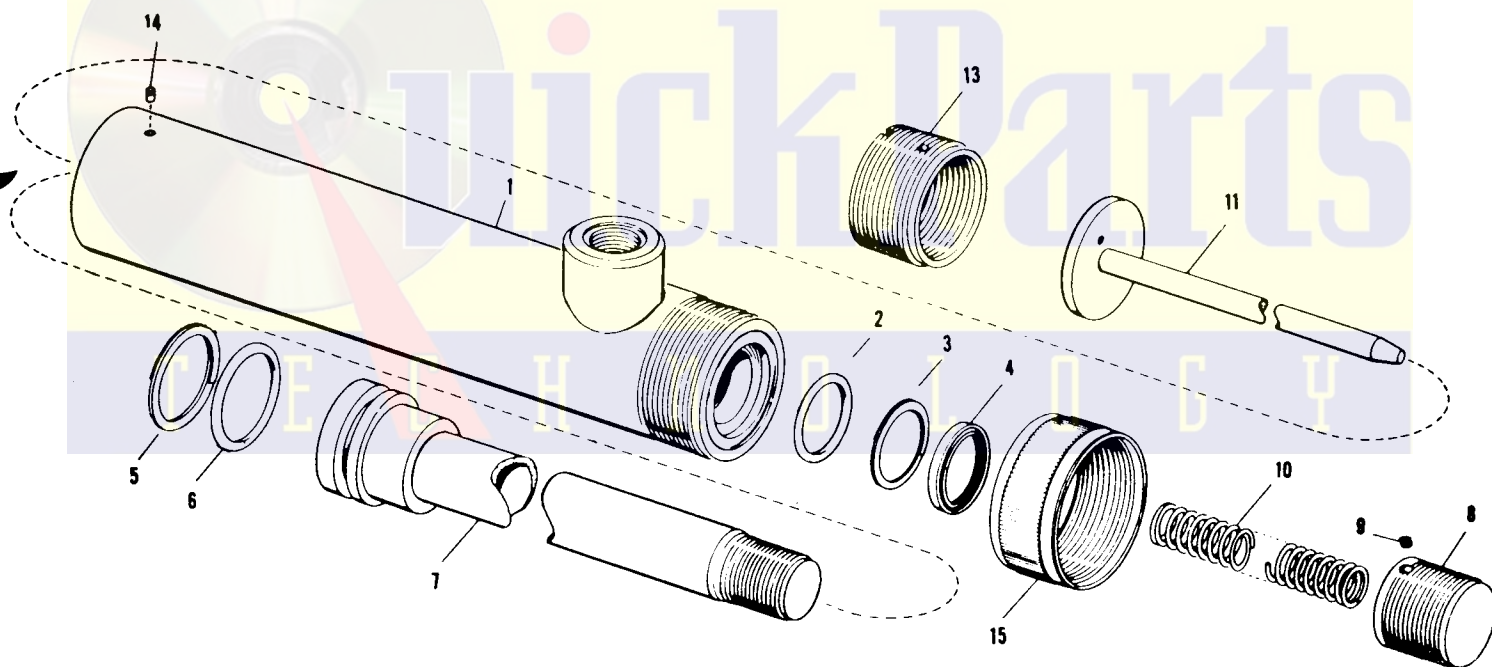
Master Copy

**ENERPAC®**

## Repair Parts Sheet

RWP-25  
RCP-25

Rated Capacity	4,000 Lbs.
Stroke	5 Inches
Hydraulic Pressure	7,250 PSI



TO PROTECT YOUR WARRANTY, USE ONLY ENERPAC HYDRAULIC OIL.

# PARTS LIST

Serial Numbers Beginning With "O"

Item No.	Description	No. Req'd.	Model No. RCP-25	Model No. RWP-25
1	Base	1	A67.900-1	A67.900-1
2	"O" Ring	1	*	*
3	Back-Up Ring	1	*	*
4	Wiper Seal	1	*	*
5	Back-Up Ring	1	*	*
6	"O" Ring	1	*	*
7	Plunger	1	B977.040	B977.040
8	Saddle	1	A44.045	A44.045
9	Set Screw	1	A66.087	A66.087
10	Spring	1	B976.183	B976.183
11	Guide Rod	1	A45.900	A45.900
13	Base Plug	1	A43.006	A43.006
14	Pin	1	A39.061	A39.061
15	Thread Protector	1	R540.271	R540.271
	Decal	1	*	*
	Ram Half Coupler		AR-630	*
	Dust Cap		Z-640-1	*
	Cylinder Packing Kit (Includes * Items)		RC-119K-2	RC-119K-2

**NOTE:** Orders for parts cannot be filled unless both model and serial number with prefix imprinted on nameplate are given.

PARTS AND SERVICE	WARRANTY	WARRANTY RETURN PROCEDURE
<p>For quality workmanship and genuine ENERPAC parts, select a Franchised ENERPAC Service Depot for your repair needs.</p> <p>Only repairs performed by a Franchised Service Depot displaying the official ENERPAC Franchised sign are backed with full factory warranty.</p> <p>The Classified Section in your Phone Book lists your nearest Franchised Service Depot.</p>	<p>ENERPAC warrants its products against defects in workmanship and materials for 90 days from date of delivery to user. Chain is not warranted.</p> <p>Warranty does not cover ordinary wear and tear, abuse, misuse, overloading, altered products or use of improper fluid.</p>	<p>When question of warranty claim arises, the user should send his unit to the nearest ENERPAC Franchised Service Depot for inspection, transportation to be prepaid and evidence of purchase date furnished. If the claim comes under the terms of our warranty, the Franchised Service Depot will REPAIR OR REPLACE PARTS AFFECTED and return prepaid.</p>

# ENERPAC®

AN **APPLIED POWER**  **INDUSTRY**