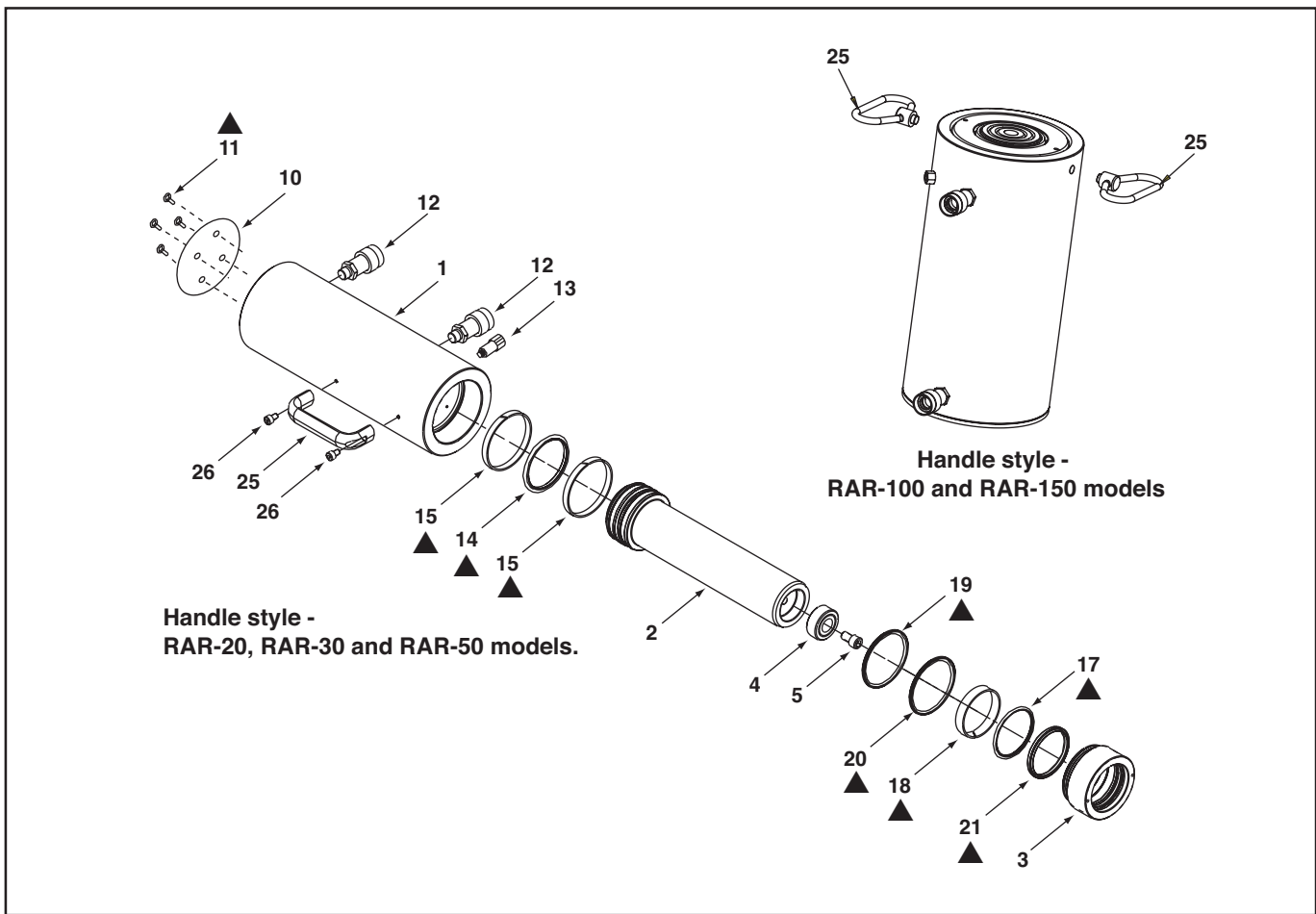


Repair Parts Sheet	Revision	Revision Date	Product Code Beginning
Reference nr. L2823	Rev. D	02/2014	O & A



**Repair Parts List RAR**

**L 2823**

Item	Description	Qty	20-Ton	30-Ton	50-Ton	100-Ton	150-Ton
1	Cylinder Base	1	Not available as spare part, order new cylinder				
2	Plunger 50mm	1			RAR502040	RAR1002040	RAR1502040
	Plunger 100mm	1			RAR504040	RAR1004040	RAR1504040
	Plunger 150mm	1			RAR506040	RAR1006040	RAR1506040
	Plunger 200mm	1			RAR508040	RAR1008040	RAR1508040
	Plunger 250mm	1			RAR5010040	RAR10010040	RAR15010040
3	Stop Ring	1	DD5050044	DD5051044	DD5052044	DD5053044	DD5054044
4	Saddle	1	RAR20045	RAC20045	CLRG50045	CLRG100045	CLRG150045
5	Screw HSHC DIN 912 / 8.8	1	M6 x 10	M6 x 10	M12 x 20	M12 x 20	M12 x 20

# Repair Parts List RAR

# L 2823

Item	Description	Qty	20-Ton	30-Ton	50-Ton	100-Ton	150-Ton
10	Protector Plate ■	1	DC5466101	DC5467101	DC5453101	DD5468101	DD5455101
	Protector Plate ●	1	DC5466101	DC5467101	DC5453101	DD1113101	DD1112101
11	Screw DIN 7991 ■	4	▲	▲	▲	▲	▲
	Screw DIN 7991 ●	4	▲	▲	▲	▲	▲
12	Coupler	2	CR400	CR400	CR400	CR400	CR400
13	Safety Valve	1	CJ160900W	CJ160900W	CJ160900W	CJ160900W	CJ160900W
14	Piston Seal	1	▲	▲	▲	▲	▲
15	Piston Wear Ring	2	▲	▲	▲	▲	▲
17	Rod Seal	1	▲	▲	▲	▲	▲
18	Rod Wear Ring	1	▲	▲	▲	▲	▲
19	Stop Ring O-Ring	1	▲	▲	▲	▲	▲
20	Stop Ring Backup Ring	1	▲	▲	▲	▲	▲
21	Rod Wiper	1	▲	▲	▲	▲	▲
25	Handle	1	DC5477070	DC5477070	DC5477070		
	Handle	2				DC5470900	DC5470900
26	Screw HSHC DIN 912 / 8.8	2	M6 x 16	M6 x 16	M6 x 16		
27	EP Decals (not shown)	2	▲	▲	▲	▲	▲
28	Warning Decall (not shown)	1	▲	▲	▲	▲	▲
29	Dust Cap (not shown)	2	▲	▲	▲	▲	▲
30	Coupler O-Ring (not shown)	2	▲	▲	▲	▲	▲
	<b>Repair Kit</b>	<b>1</b>	<b>RAR20K50</b>	<b>RAR30K50</b>	<b>RAR50K50</b>	<b>RAR100K50</b>	<b>RAR150K50</b>

▲ = Indicated parts only available in Repair Kit. ■ Units with date code "O" only. ● Units with date code "A" only.



Item nr.	Torque / remark
3	20.3 - 33.9Nm, 15 - 25 ft lbs
5	(M6) 5.7 - 7.9 Nm, 50 - 70 in lbs
	(M12) 13.6 - 27.1Nm, 10 - 20ft lbs
11	(M6) 5.7 - 7.9Nm, 50 - 70in lbs
	(M10) 13.6 - 27.1Nm, 10 - 20ft lbs
12	101Nm, 75 ft lbs min.
	Max. coupler protrusion 55.25mm
13	101Nm 75 ft lbs min
	700 - 735 Bar, 10000 - 10500 PSI
25	Loctite 271 (RAR 100 & 150)
26	5.7 - 7.9 Nm, 50 - 70 in lbs



To maintain your warranty:

- Use only Enerpac Oil
- Have your products inspected and repaired by an Enerpac Authorized Service Center

## ENERPAC

Visit [www.enerpac.com](http://www.enerpac.com) for the location of the Enerpac Authorized Service Center nearest you.