

ENERPAC

Repair Parts Sheet

Master Copy

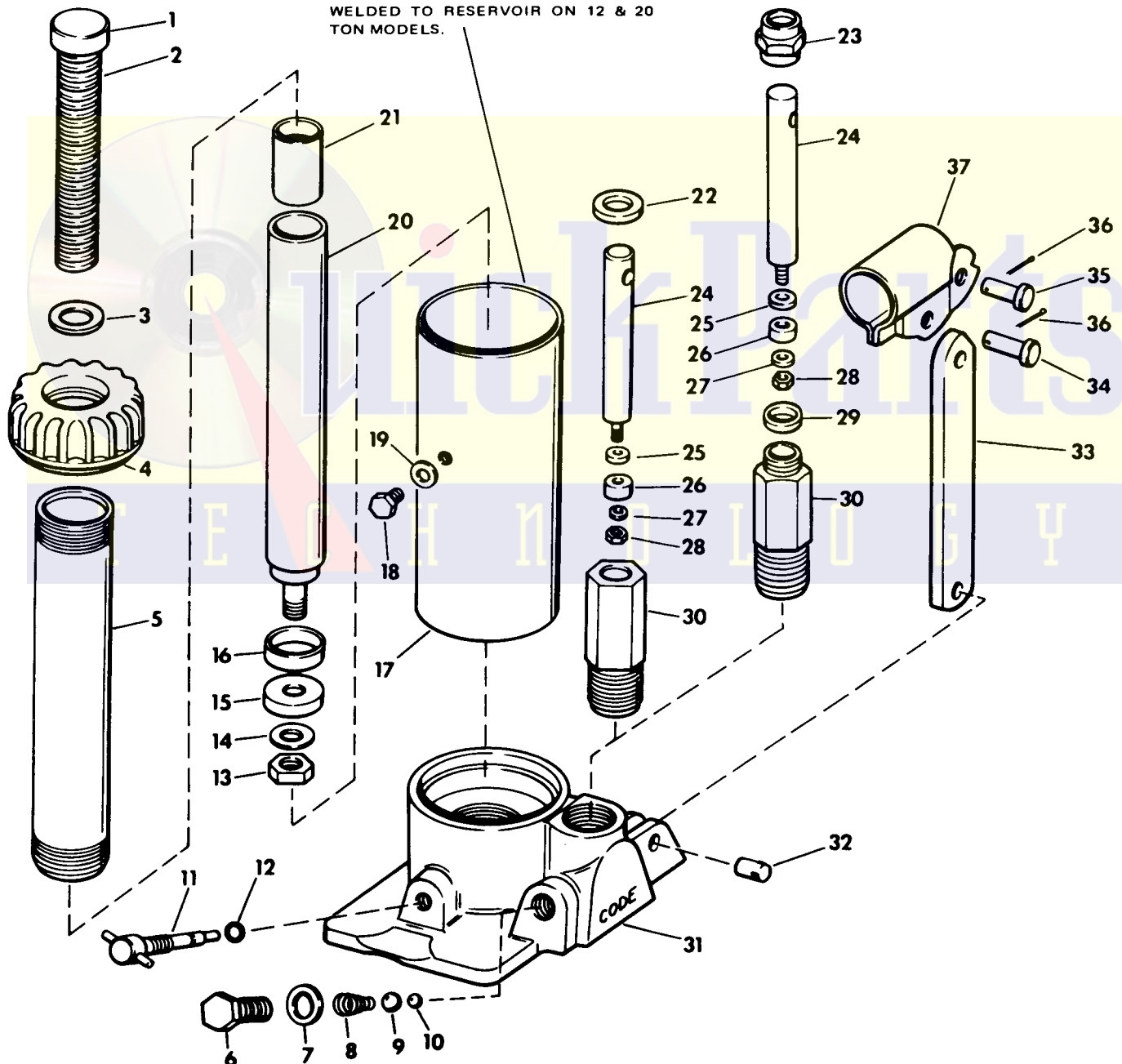
JH-1.5, JH-3, JH-5,
JH-8, JH-12, JH-20

MODEL NUMBERS

JH1.5 1½ Ton
JH3 3 Ton
JH5 5 Ton

JH8 8 Ton
JH12. 12 Ton
JH20. 20 Ton

NOTE
CARRYING HANDLE IS INCLUDED AND
WELDED TO RESERVOIR ON 12 & 20
TON MODELS.



TO PROTECT YOUR WARRANTY, USE ONLY ENERPAC HYDRAULIC OIL.

PARTS LIST

PRESENT MODELS ARE CODED "B"

ITEM No.	DESCRIPTION	Model No. JH-1.5	Model No. JH-3	Model No. JH-5	Model No. JH-8	Model No. JH-12	Model No. JH-20
1	Saddle	Use Item 2	BA85.45-1	AA85.45-1	AA85.45-1	D87.45-3	EA11.45-1
2	Screw	TC7.28	BA85.28-1	AA85.28-1	AA85.28-1	D87.28-2	None
3	"O" Ring	*	*	*	*	*	*
4	Cap (early series)	TC7.20-1	1-K525.020 & 1-K379.025	1-K528.020 & 1-K547.025	1-K529.020 & 1-K548.025	D87.20-2	EA11.20-2
	Cap (present series)	TC7.20-1	K527.020	K528.020	K529.020	K519.020	K520.020
5	Cylinder	TC7.30	BA85.30-3	CB9.30-2	CB9.30-2	D87.30-2	EA11.30-1
6	Plug	CB9.185-2	CB9.185-2	CB9.185-2	CB9.185-2	CB9.185-2	CB9.185-2
7	Gasket	*	*	*	*	*	*
8	Spring	*	*	*	*	*	*
9	5/16" Ball	*	*	*	*	*	*
10	7/32" Ball	*	*	*	*	*	*
11	Valve	AJ10.059	AJ10.059	AJ10.059	AJ10.059	AJ10.059	AJ10.059
12	"O" Ring	*	*	*	*	*	*
13	Nut	MJ.35	MJ.35	AA85.120	AA85.120	D87.120	EA11.120
14	Washer	TC7.43	BA85.43	AA85.43	AA85.43	D87.43	EA11.43-1
15	Cup	*	*	*	*	*	*
16	Ring	TC7.29	K497.044	K512.044	K512.044	K525.044	EA11.29-1
17	Reservoir (early series)	TC7.25	K379.025	K547.025	K548.025	1-K519.020 & 1-K553.025	K559.025
	Reservoir (present series)	1-TC7.25 & 1-TC7.20-1	K379.025	K547.025	K548.025	K553.025	K559.025
18	Plug	C9.22-2	C9.22-2	C9.22-2	C9.22-2	C9.22-2	C9.22-2
19	Gasket	*	*	*	*	*	*
20	Plunger	TC7.40	BA85.40-4	AA85.40-3	AA85.40-3	D87.40-2	EA11.40-2
21	Sleeve	TC7.39	BA85.39	AA85.39	AA85.39	D87.39	None
22	Wiper (present series)	*	*	*	*	*	*
23	Nut (early series)	CB9.54-1	CB9.54-1	CB9.54-1	CB9.54-1	CB9.54-1	CB9.54-1
24	Piston	K585.040	K585.040	K585.040	K585.040	K585.040	K585.040
25	Seal	*	*	*	*	*	*
26	Cup	*	*	*	*	*	*
27	Washer	*	*	*	*	*	*
28	Nut	*	*	*	*	*	*
29	Packing (early series)	*	*	*	*	*	*
30	Pump (includes items 22, 24, 25, 26, 27, 28)	K584.900	K584.900	K584.900	K584.900	K584.900	K584.900
31	Base	NOT AVAILABLE AS REPLACEMENT PART			NOT AVAILABLE AS REPLACEMENT PART		
32	Pin	K494.061	K494.061	K494.061	K494.061	K494.061	K494.061
33	Link	BA85.62-2	BA85.62-2	BA85.62-2	BA85.62-2	BA85.62-2	BA85.62-2
34	Pin	J19.57	J19.57	J19.57	J19.57	J19.57	J19.57
35	Pin	TC7.57	TC7.57	TC7.57	TC7.57	TC7.57	TC7.57
36	Pin	*	*	*	*	*	*
37	Beam	J19.60	J19.60	J19.60	J19.60	J19.60	J19.60
	Handle (not shown)	H-12	H-12	H-12	H-12	H-12	H-12
	Oil (HF-100)	5-3/4 cu. in.	11 cu. in.	16.3 cu. in.	18.1 cu. in.	25.3 cu. in.	44 cu. in.
	Decal	*	*	*	*	*	*
*	Packing Kit (includes * items)	JH-1.5K	JH-3K	JH-5K	JH-8K	JH-12K	JH-20K

NOTE: Orders for parts cannot be filled unless both model and serial number with prefix imprinted on nameplate are given.

PARTS AND SERVICE

For quality workmanship and genuine ENERPAC parts, select a Franchised ENERPAC Service Depot for your repair needs.

Only repairs performed by a Franchised Service Depot displaying the official ENERPAC Franchised sign are backed with full factory warranty.

The Classified Section in your Phone Book lists your nearest Franchised Service Depot.

WARRANTY

ENERPAC warrants its products against defects in workmanship and materials for 90 days from date of delivery to user. Chain is not warranted.

Warranty does not cover ordinary wear and tear, abuse, misuse, overloading, altered products or use of improper fluid.

WARRANTY RETURN PROCEDURE

When question of warranty claim arises, the user should send his unit to the nearest ENERPAC Franchised Service Depot for inspection, transportation to be prepaid and evidence of purchase date furnished. If the claim comes under the terms of our warranty, the Franchised Service Depot will REPAIR OR REPLACE PARTS AFFECTED and return prepaid.

ENERPAC®

AN APPLIED POWER  INDUSTRY

ENERPAC, BUTLER, WISCONSIN 53007 DIVISION OF APPLIED POWER INDUSTRIES, INC. TELEPHONE (414) 781-6600 TELEX 026-682