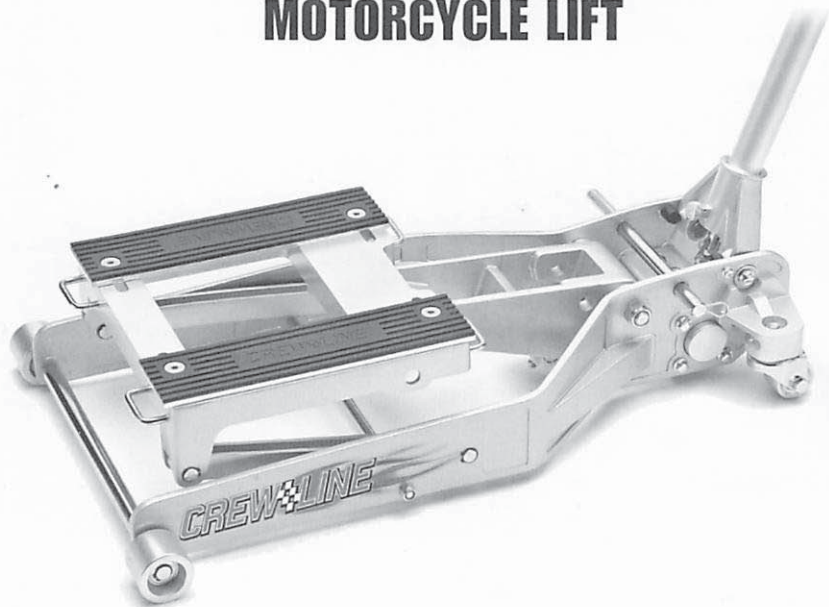


Model #480366

**CREW<sup>+</sup>LINE™**

**1,500<sup>LB</sup>  
ALUMINUM  
MOTORCYCLE LIFT**



Please retain these instructions for future reference.

If you encounter any problems or difficulties,  
please contact our toll free Customer Service Department at:

1-800-423-3598

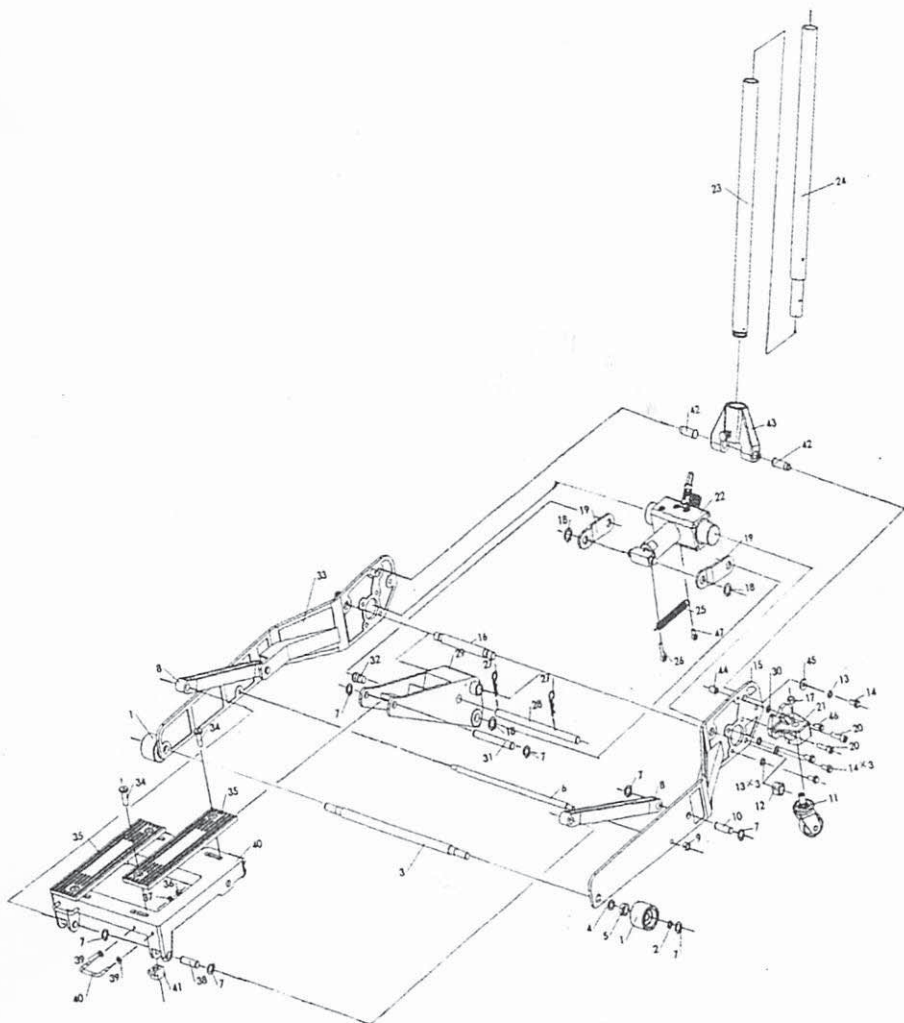
1-310-522-9008 (California only)

1-310-522-9066 Fax

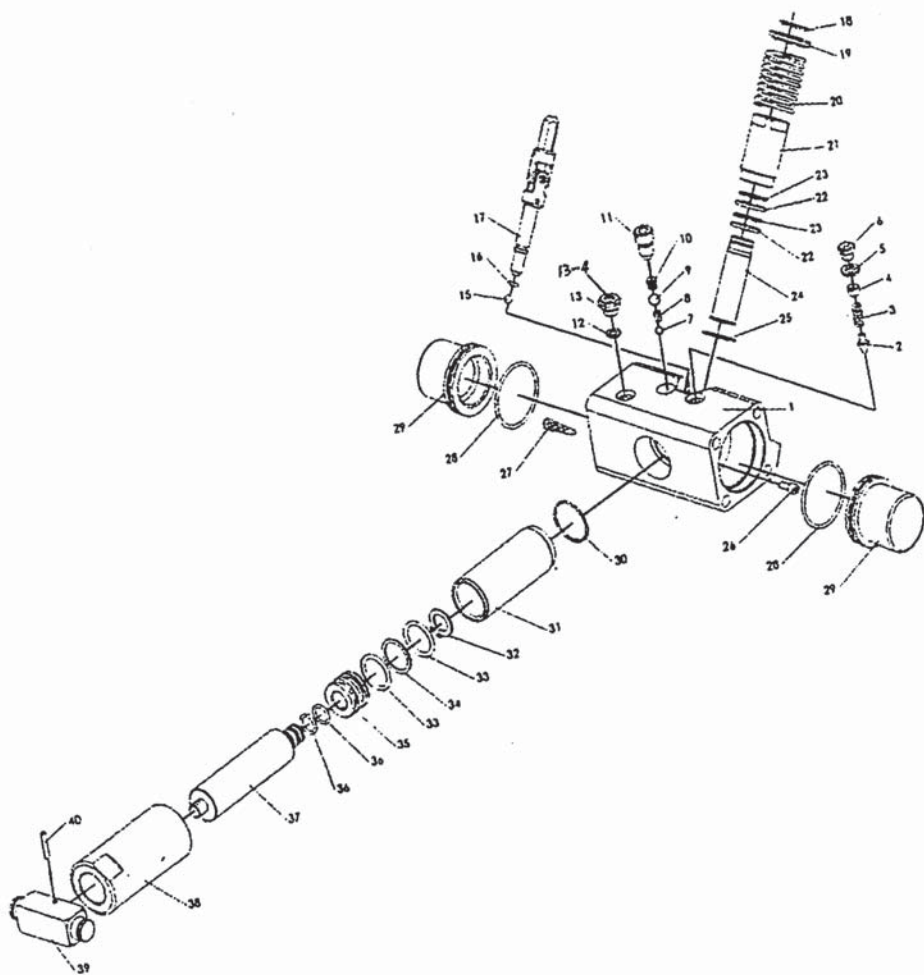
PARTS LIST		
No.	Description	Qty.
1	Front Wheel	2
2	Washer 16	2
3	Shaft	1
4	Inner Tighten Washer 18	2
5	Nut M18	2
6	Shaft	1
7	C-Ring 16	12
8	Link Rod	2
9	Nut 10	2
10	Link Rod Shaft	2
11	Rear Wheel Set	2
12	Nut 18	2
13	Inner Tighten Washer	8
14	Bolt	8
15	Left Frame	1
16	Raise Arm Axis	1
17	Nut 12	2
18	C-Ring 19	4
19	Pull Rod	2
20	Bolt	4
21	Rear Wheel Saddle	2
22	Power Unit Assembly	1
23	Handle Lower	1
24	Handle Upper	1
25	Spring	2
26	Screw	2
27	R-Ring	2
28	Humper	1
29	Lift Arm	1
30	Inner Tighten Washer 8	2
31	Linger Shaft	1
32	Pull Rod Axis	2
33	Right Frame	1
34	Screw	4
35	Rubble Pillow	2
36	Nut 6	8
37	Spring Washer 6	8
38	Link Rod Shaft	2
39	Washer 6	8
40	Handle	4
41	Nut	4
42	Handle Base Axis	2
43	Handle Base	1
44	Case	2
45	Washer 10	2
46	Bolt	2
47	Screw	1

# SPECIFICATIONS

Max Capacity	1500 lbs. (681.82kg)
Base Length	19-3/4" (50.17cm)
Base Width	33-1/2" (85.0 cm)
Base Height (Without Handle)	9-1/2" (24.13cm)
Minimum Lift Height	5-1/8" (130.18cm)
Max Lift Height	17-1/8" (434.98 cm)
Total Weight	56.4 lbs. (25.63kg)



RAM PARTS LIST		
No.	Description	Qty.
1	Aluminum Base	1
2	Safety Valve	1
3	Relief Valve Spring	1
4	Regulate Bolt	1
5	Seal Washer	1
6	Seal Bolt	1
7	Steel Ball 5.5	1
8	Separator	1
9	Steel Ball 9	1
10	High Pressure Spring	1
11	High Pressure Bolt	1
12	O-Ring 9.5 x 2.65	1
13	Oil Plug	1
13-4	Breathing Screw	1
15	Steel Ball 7	1
16	O-Ring 7.1 x 2.65	1
17	Discharge Valve Rod	1
18	Snap Ring 20	1
19	Piston Cover	1
20	Press Spring	1
21	Pump Case	1
22	O-Ring 20 x 2.65	2
23	Back Seal	2
24	Pump Core	1
25	Washer	1
26	Bolt	1
27	Oil Strainer	2
28	O-Ring	2
29	Oil Cover	2
30	O-Ring	1
31	Hydraulic Cylinder	1
32	Snap Ring 16	1
33	O-Ring 30 x 3.55	2
34	Back Seal	1
35	Bush	1
36	O-Ring 16 x 2.4	2
37	Ram	1
38	Aluminum Bar	1
39	Block Linkage	1
40	Spring Pin 4 x 24	1





## OWNER AND/OR OPERATOR RESPONSIBILITY

It is the owner and/or operators responsibility to study all WARNINGS, operating, and maintenance instructions contained on the product label and instruction manual prior to operation of this unit. The owner/operator shall retain product instructions for future reference.

The owner and/or operator shall have an understanding of the product and safety operating instructions before operating. Safety information shall be emphasized and understood. If the operator is not fluent in English, the product and safety instructions shall be read to and discussed with the operator in the operator's native language by the purchaser/owner or his designee, making sure that the operator comprehends their contents.

### IMPORTANT SAFETY INFORMATION.

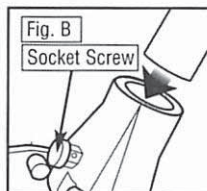
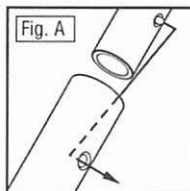
Read all safety warnings before operation! Failure to obey these warnings may result in loss of load, damage to jack, and or jack failure resulting in personal injury or property damage.



### WARNING

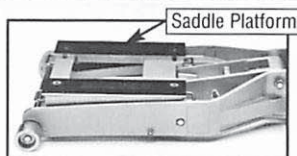
- Read, Study, and Understand all warnings and operating instructions prior to use
- Do not overload this jack beyond rated capacity
- This jack is designed for use only on flat hard level surfaces capable of sustaining the load
- Lift only on areas of the vehicle as specified by the vehicle manufacturer
- Place load in center of the saddle only; load saddles equally
- No alterations to the jack shall be made
- Only attachments and/or adapters supplied by the manufacturer shall be used
- Keep children away from work area
- Failure to heed these warnings may result in personal injury and/or property damage
- Use hold down straps to secure load to the jack (use straps with 150% rated capacity of load; straps not included)
- Do not move or dolly the vehicle while on the jack
- Lifting device only! Immediately after lifting, support lift arm with safety lock bar to prevent accidental lowering

- Slide the lower handle into the upper handle, depress the locking button, and slide into the bottom section until button snaps into hole. (Fig.A)
- Loosen the handle socket screw in the yoke.
- Apply a small amount of grease to the handle socket.
- Place the assembled handle into the handle socket. (Fig. B)
- Tighten the handle socket screw.



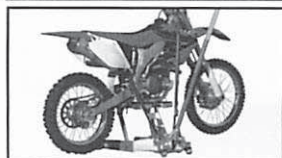
### Mounting Vehicle On Lift

1. Lower the Jack completely. This should allow you to easily roll it under the vehicle. *Note: Read your Vehicle Owner's Manual to determine the recommended lift points of your specific vehicle.*
2. Make sure that your vehicle is properly balanced. Load saddle platform equally.



### Operating Lift

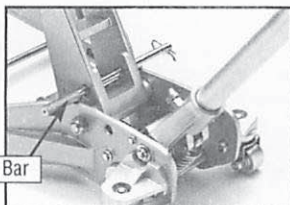
1. Assure that vehicle is properly balanced on lift saddle platform.
2. Support the vehicle with tie down straps. Attach your vehicle securely to the lift, using appropriate straps (recommended to use straps with 150% rated capacity of weight of load, straps not included).



3. While watching to make sure it is safe to do so, pump the handle until the vehicle is at the desired height. Make sure the vehicle is lifted enough to engage the Lock Bar.

4. Insert Lock Bar and Secure with Safety Pins

Lock Bar



#### Lowering Vehicle

1. Be sure it is safe to lower your vehicle by clearing area of tools and equipment, make sure everyone is clear of the lift.
2. Pump handle to remove load from Safety Lock Bar.
3. Remove Safety Pin on Lock Bar, and remove Safety Bar.
4. Turn handle slowly counter-clockwise to allow lift to slowly lower in a controlled fashion



**Never work on the vehicle, or leave unattended if the Lock Bar is not in place, and if sufficient tie down straps are not holding the vehicle firmly in place.**

#### MAINTENANCE

Monthly maintenance is recommended. Lubrication is critical to jacks as they support heavy loads. Any restriction due to dirt, rust, etc., can cause either slow movement or cause extremely rapid jerks, damaging the internal components. The following steps are those designed to keep the jack well lubed:

1. Lubricate the ram, linkages, saddle and pump mechanism with light oil. Grease wheel bearings and axles.
2. Visually inspect for cracked welds, bent, loose, missing parts or hydraulic oil leaks.
3. If jack is subjected to abnormal load or shock, remove from service and have it examined by an Authorized Repair Service.
4. Clean all surfaces and maintain all labels and warnings.
5. Check and maintain the ram oil level.

#### CHECKING OIL LEVEL

Do not use brake or transmission fluids, or regular motor oil as they can damage the seals. Always purchase and use products labeled Hydraulic Jack Oil.

1. Turn handle counterclockwise to allow ram to fully retract. It may be necessary to apply force to the saddle for lowering.
2. With jack in upright position remove oil fill plug. Oil should be even with bottom of hole. If not, top up. Do not overfill. Always fill with new, clean hydraulic jack oil.
3. Replace fill plug.
4. Check jack operation.

At this time, consult Troubleshooting section for System Air Purge

## MAINTENANCE AND INSPECTION

1. Visual inspections shall be made before each use of the jack by checking for abnormal conditions such as cracked wheels, leaks and damaged, loose or missing parts.
2. Other inspection shall be made per product operating instructions.
3. Each jack shall be inspected immediately if it is believed to have been subjected to an abnormal load or shock.
4. Owners and or operators should be aware that repair of this equipment may require special knowledge and facilities.
5. It is recommended that an annual inspection of the jack be made and that any defective parts, decals, or safety labels or signs be replaced with manufacturer's specified parts.
6. Any jack that appears to be damaged in anyway, is found to be worn, or operates abnormally shall be removed from service until repaired.
7. Because of the potential hazards associated with this type of equipment, no alterations shall be made to the product.
8. Do not mix different types of oil together. When filling the jack with oil, do not permit dirt or any other substance to enter the hydraulic system.

## TROUBLESHOOTING

1. The power unit may be low on fluid. With the jack on a level surface and in the down position, remove the oil plug and add clean hydraulic jack fluid to the level of the oil plug hole.
2. The power unit may have trapped air. Open the release valve a minimum of two full turns. Pump the handle a minimum of 20 strokes to purge the air from the system.
3. Valves may not be closing properly. To seat the valves: A) Close the release valve. B) With the ram fully lowered, manually lift the boom as high as possible. C) Open the release valve and allow the boom to descend to the lowered position.

## SYMPTOMS

Will not lift load	See Troubleshooting Section
Will not hold load	See #3 under the Troubleshooting Section
Will not lift to full height	See #1 and #2 under the Troubleshooting Section
Pump feels "spongy" under load	See #1 and #2 under the Troubleshooting Section
Handle raises under load	See #3 under the Troubleshooting Section
Handle lowers under load	See #3 under the Troubleshooting Section

## FACTORY SERVICE

Any hydraulic jack found to be damaged in any way, is found to be worn or operates abnormally "SHALL BE REMOVED FROM SERVICE UNTIL REPAIRED". Owners and/or operators should be aware that repair of the equipment requires specialized knowledge and facilities. Only factory authorized parts, labels and decals shall be used on this equipment. Call the customer service department. Annual inspections must be performed, please call our customer service number 1-800-423-3598 for recommended authorized repair facility.

## ALTERATIONS

Because of the potential hazards associated with the misuse of equipment of this type, no alterations shall be made to the product without written authorization of the manufacturer or supplier.

**FOR CUSTOMER SERVICE**  
**1-800-423-3598**

**CREW<sup>®</sup>LINE<sup>™</sup>**

1431 Via Plata  
Long Beach, CA 90810-1462  
www.alltradetools.com  
©Copyright 2004, Alltrade Tools LLC Rev. 1