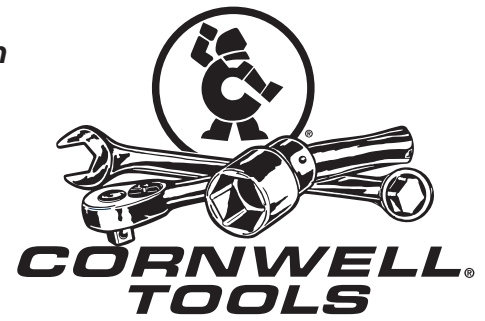


Read and carefully study the operating instructions before unpacking and operating the Continuous Shot Air Grease Gun. The gun must be operated, maintained and repaired by a person who is familiar with the operating instructions. Operate the gun only after you have read and understand this operation manual.



⚠ WARNING

FOR YOUR SAFETY AND TO PREVENT INJURY:

EXTREME PRESSURE MAY CAUSE WHIP HOSE TO BURST. USE ONLY APPROVED HOSES AND FOLLOW THE HOSE INSTRUCTIONS AND WARNINGS.

THIS AIR OPERATED GREASE GUN CAN DEVELOP HIGH PRESSURES - UP TO 6,000 PSIG (414 BAR). USE SAFETY GLASSES AND GLOVES WHILE OPERATING THE GUN. KEEP HANDS CLEAR OF THE EXPOSED RUBBER PORTION OF THE HOSE WHILE OPERATING THE GUN WITH HOSE.

IF FLUID APPEARS TO PENETRATE THE SKIN, SEEK IMMEDIATE MEDICAL ATTENTION. DO NOT TREAT AS A SIMPLE CUT.

BE SURE THE TRIGGER IS NOT DEPRESSED WHEN ATTACHING THE GUN TO AN AIR INLET HOSE.

AVOID ACCIDENTAL STARTING.

HOLD THE HOSE ONLY BY THE METAL SPRING GUARDS ON THE END.

DO NOT ALLOW THE HOSE TO KINK. DO NOT BEND THE HOSE IN A TIGHT RADIUS.

REPLACE THE HOSE AT FIRST SIGN OF WEAR, KINK OR DAMAGE TO THE OUTSIDE JACKET.

USE ONLY HIGH PRESSURE GREASE GUN HOSE AS A REPLACEMENT.

The Cornwell Air Operated Continuous Shot Grease Gun is a fully pneumatic powered tool. The gun is designed for manual lubrication of grease points in automotive and truck applications. The gun has a single action pump that delivers grease each time the trigger is depressed and the plunger moves forward.

⚠ WARNING

FOR YOUR SAFETY AND TO PREVENT INJURY:

High pressure hazard.

Wear safety goggles.

Do not exceed 60 psi with hose or 90 psi with solid extension. To do so may cause personal injury.

FEATURES

- 360° Swivel head allows incredible access to grease fittings
- Simple, durable construction for years of consistent, reliable service
- True continuous grease feed with one trigger pull
- Locking follower design
- Quiet, dependable operation
- Includes 18" high pressure grease hose and durable 6" bent metal spout

GG-CSGGA

Continuous Shot Air Grease Gun w/Swivel Head

PROPER GREASE GUN USE

This Air Powered Continuous Shot Grease Gun was developed for the specific purpose of dispensing grease by using pneumatic power.

The maximum rating listed below should not be exceeded.

This tool should only be used for its designed purpose and according to the instructions in this manual.

SPECIFICATIONS

Pump ratio (max).....	40:1
Output per stroke038 in (cubed)
Pneumatic inlet pressure (min)	40 Psig
Pneumatic inlet pressure (max)	150 Psig
Grease output pressure	6,000 Psig
Grease reservoir capacity	14.5 oz.
Operating temperature range	0 to 120° F
Weight (empty).....	4.74 lbs
Weight (full).....	4.84 lbs
Lubricant up to NLGI	#2 Grease
Pneumatic port inlet	1/4 - 18 NPT
Grease port outlet	1/8 - 27 UNPT

GENERAL CAUTIONARY NOTES

Do not allow bystanders, children or other on-lookers in the work area as they can cause distractions, which may lead to mistakes and accidents.

Carefully inspect the equipment for damaged, loose or missing parts. If the unit is worn or damaged, do not use it and contact an authorized service center for evaluation or repair.

The Continuous Shot Grease Gun must be primed after each refill or grease cartridge change. You should also check the priming of the gun before each use.

For best performance and to extend product life, add a few drops of air tool oil through the air fitting at the bottom of the handle if gun begins to cycle slowly or erratically.

CAUTION!

Air pockets in the cartridge will cause the gun to lose prime.

PRIMING THE CONTINUOUS SHOT GREASE GUN

With the gun loaded with grease and the gun hooked to an air supply, activate the trigger until grease flows from the hose or pipe. To relieve air pockets, operate the air vent valve #31 while depressing the trigger. If grease does not flow after 10-15 seconds of operation, remove the hose or pipe and activate the trigger until grease flows from the hose/pipe outlet. Make sure the bearing, fitting and lubrication line are clear and free flowing before operating the gun. If the bearing, fitting or lubrication line is blocked, the gun can stall.

REMOVING AN EMPTY GREASE CARTRIDGE

- 1. Pull the T handle until the rod is fully extended. Hook the rod into the rod notch in the end cap.
- 2. Unscrew the grease tube from the gun.
- 3. Carefully center the grease rod and eject the empty cartridge from the grease barrel.

INSTRUCTIONS FOR CARTRIDGE LOADING

- 1. Pull the T handle until the rod is fully extended, lock rod into cap notch and remove the barrel assembly from the gun.
- 2. Turn T handle 1/2 turn to lock the follower rod to the follower.
- 3. Remove the plastic cap from the grease cartridge and insert the cartridge into the barrel assembly.
- 4. Remove the pull-tab from the grease cartridge.
- 5. Screw the barrel assembly on to the gun assembly.
- 6. Release the rod by centering the rod.
- 7. Push the rod by hand until the follower is inserted into the grease cartridge. Then turn the T handle 1/2 turn to unlock the follower rod from the follower.
- 8. Prime the gun and remove any air pockets per the instructions on priming the gun.

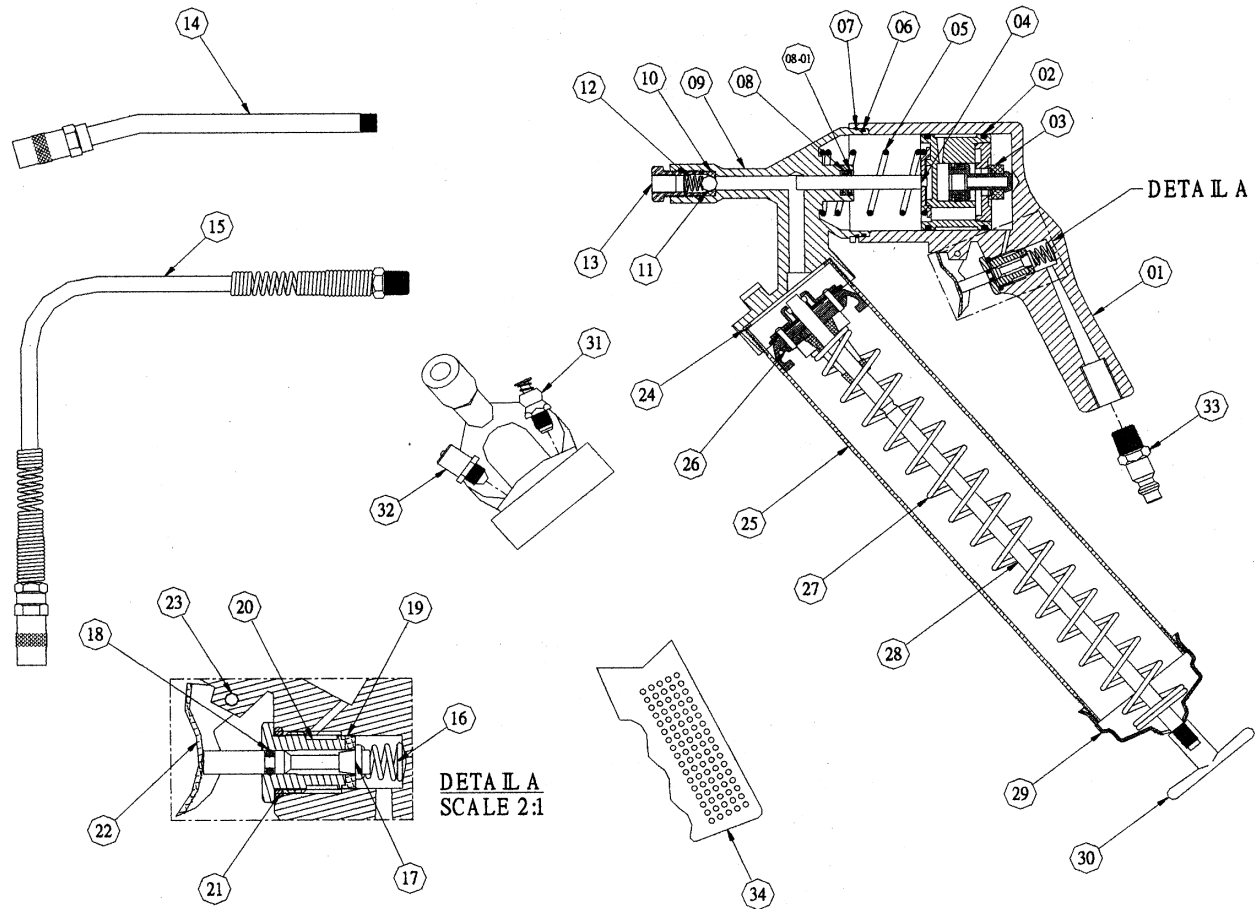
SUCTION FILLING

- 1. Remove the barrel assembly from the gun.
- 2. Insert the open end of the barrel assembly into the grease bucket.
- 3. Pull the T handle until it is fully to the rear and engage it in the rod notch, making sure to keep the open end of the barrel well within the grease.
- 4. When the barrel assembly is full of grease, screw it back on to the gun assembly.
- 5. Release the rod by centering the rod.
- 6. Prime the gun and remove any air pockets per the instructions on priming the gun.

USING A FILLER PUMP

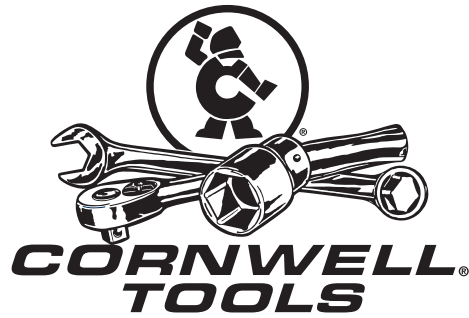
- 1. Attach the bulk load fitting to the bulk container.
- 2. Operate the filler pump.
- 3. When the T handle and rod are fully extended (about 8-1/2"), the barrel is full.
- 4. Remove the gun from the bulk load container.
- 5. Release the rod by centering the rod.
- 6. Prime the gun and remove any air pockets per the instructions on priming the gun.

PARTS BREAKDOWN - GG-CSGGA



Ref. #	Item #	DESCRIPTION	QTY	Ref. #	Item#	DESCRIPTION	QTY
	01	RSGG01C Handle (Blue)	1	18	RSGG18	O-Ring	1
	02	RSGG02 Piston Assembly	1	19	RSGG19	Rubber Seal	1
	03	RSGG03 O-Ring	2	20	RSGG20	Trigger Body	1
	04	RSGG04 Plunger Assembly	1	21	RSGG21	O-Ring	1
	05	RSGG05 Spring	1	22	RSGG22	Trigger	1
	06	RSGG06 O-Ring	1	23	RSGG23	Roll Pin	1
	07	RSGG07 Retaining Ring	1	*24		Packing	1
	08	RSGG08 Wiper Rod	1	25	RSGG25A	Container Tube	1
	08-01	RSGG08-01 Retaining Ring	1	26	RSGG26FA	Follower Assembly (Incl. #24, 26-30)	1
	09	RSGG09C Head (Blue)	1	*27		Spring Compr. 1-3/4"	1
	10	RSGG10 Seat Ball	1	*28		Rod Follower	1
	11	RSGG11 Ball	1	*29		Cap Tube	1
	12	RSGG12 Spring Ball Check Valve	1	30	RSGG30	T-Handle	1
	13	RSGG13 Body Check Valve	1	31	RSGG31	Air Vent Valve	1
	14	RSGG14 Coupler Extension	1	32	RSGG32	Bulk Load Grease Fitting	1
	15	RSGG15 18" Whip Hose	1	33	RSGG33	Nipple 1/4" Air Coupler	1
	16	RSGG16 Spring	1	34	RSGG34	Grip (Black)	1
	17	RSGG17 Trigger Stem	1				

* Only Available in RSGG26FA Follower Assembly



WARRANTY

Cornwell warrants its air tools for a period of 1 year to the consumer. We will repair any air tool covered under this warranty which proves to be defective in material or workmanship during the warranty period. In order to have your tool repaired, return the tool to any Cornwell Authorized Warranty Center, freight prepaid. Please include a copy of your proof of purchase and a brief description of the problem. The tool will be inspected and if any part or parts are found to be defective in material or workmanship, they will be repaired free of charge and the repaired tool will be returned to you freight prepaid.

This warranty gives you specific rights. You may also have other rights which vary from state to state.

The foregoing obligation is Cornwell's sole liability under this or any implied warranty and under no circumstances shall Cornwell be liable for any incidental or consequential damages.

Note: Some states do not allow the exclusion or limitation of incidental or consequential damages so the above limitation or exclusion may not apply to you.