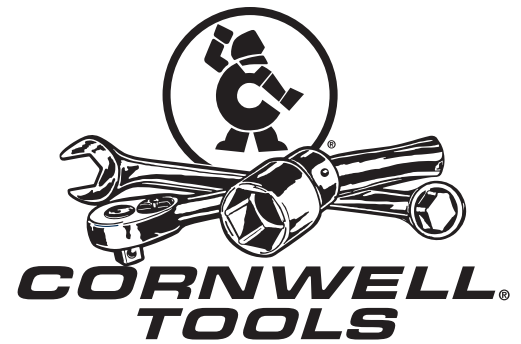


- *Operating Manual*
- *Warning Information*
- *Parts List*



Meets or exceeds ASME PALD-1997 standards for performance & safety.

! WARNING

THE USE OF THIS JACK IS LIMITED TO THE REMOVAL, INSTALLATION, AND TRANSPORTATION IN THE LOWERED POSITION, OF TRANSMISSIONS AND DIFFERENTIALS. IT MAY BE USED WITH APPROPRIATE ADAPTERS MANUFACTURED SPECIFICALLY FOR THE JACK TO HANDLE OTHER COMPONENTS, SUCH AS REAR AXLE UNITS AND TRANSFER CASES, WITHIN THE WEIGHT LIMITATIONS SPECIFIED. NO ALTERATION TO THE JACK OR ADAPTERS SHALL BE MADE.

BE SURE THE VEHICLE IS APPROPRIATELY SUPPORTED BEFORE STARTING REPAIRS.

DO NOT OVERLOAD. OVERLOADING CAN CAUSE DAMAGE TO OR FAILURE OF THE JACK.

ONLY ATTACHMENTS AND/OR ADAPTERS SUPPLIED BY THE MANUFACTURER SHALL BE USED.

THIS JACK IS DESIGNED FOR USE ONLY ON HARD LEVEL SURFACES CAPABLE OF SUSTAINING THE LOAD. USE ON OTHER THAN HARD LEVEL SURFACES CAN RESULT IN JACK INSTABILITY AND POSSIBLE LOSS OF LOAD.

READ, STUDY AND UNDERSTAND THE OPERATING MANUAL PACKED WITH THIS JACK BEFORE OPERATING.

FAILURE TO HEED THESE WARNINGS MAY RESULT IN LOSS OF LOAD, DAMAGE TO JACK, AND/OR FAILURE RESULTING IN PROPERTY DAMAGE, PERSONAL OR FATAL INJURY.

THIS OPERATING MANUAL CONTAINS IMPORTANT SAFETY INFORMATION.

READ CAREFULLY AND UNDERSTAND ALL INFORMATION BEFORE OPERATING THIS TOOL.

SAVE THIS MANUAL FOR FUTURE USE.

! WARNING

FOR YOUR SAFETY AND TO PREVENT INJURY:

Use jack for lifting purposes **ONLY**.

Always support vehicle with jack stands.

CTJ-1200LPA

1200 Lb.
Low Profile
Transmission Jack

CTJ-1200LP SPECIFICATIONS

Capacity	1200 Lbs.
Low Height	5-3/4"
Raised Height	31-1/2"
Saddle Tilt Forward	65°
Saddle Tilt Backward	12°
Saddle Tilt Side to Side	12°
Base	36-3/4" x 18-1/4"
Shipping Weight	117 Lbs.

OWNER/USER RESPONSIBILITY

The owner and/or user must have an understanding of the manufacturer's operating instructions and warnings before using the transmission jack. Personnel involved in the use and operation of equipment shall be careful, competent, trained, and qualified in the safe operation of the equipment and its proper use when servicing motor vehicles and their components. Warning information should be emphasized and understood. If the operator is not fluent in English, the manufacturer's instructions and warnings shall be read to and discussed with the operator in the operator's native language by the purchaser/owner, making sure that the operator comprehends its contents.

Owner and/or user must study and maintain for future reference the manufacturer's instructions and pertinent warning information. Owner and/or user is responsible for keeping all warning labels and instruction manuals legible and intact. Replacement labels and literature are available from the manufacturer.

ASSEMBLY INSTRUCTIONS

Assemble fingers (part #664606) and hook and chain. Refer to schematic on page 3.

INSPECTION

Visual inspection should be made before each use of the transmission jack. Any jack which appears to be damaged in any way, is found to be badly worn, or operates abnormally must be removed from service. If the jack is accidentally subjected to an abnormal load or shock it must be inspected by a manufacturer's authorized repair facility immediately. It is recommended that an annual inspection of the jack be made by a manufacturer's authorized repair facility and that any defective parts, decals, or warning labels be replaced with manufacturer's specified parts. All repairs must be made by a factory authorized service center. A list of authorized repair facilities is available from the manufacturer.

IMPORTANT! BEFORE USE

Air may become trapped in the hydraulic system during transit. To purge air:

1. Open release valve by turning release knob counterclockwise.
2. Pump handle rapidly 4 full strokes. This will expel air that may have entered oil passages during transit.
3. Close release valve by rotating release knob clockwise and pump handle.

OPERATING INSTRUCTIONS

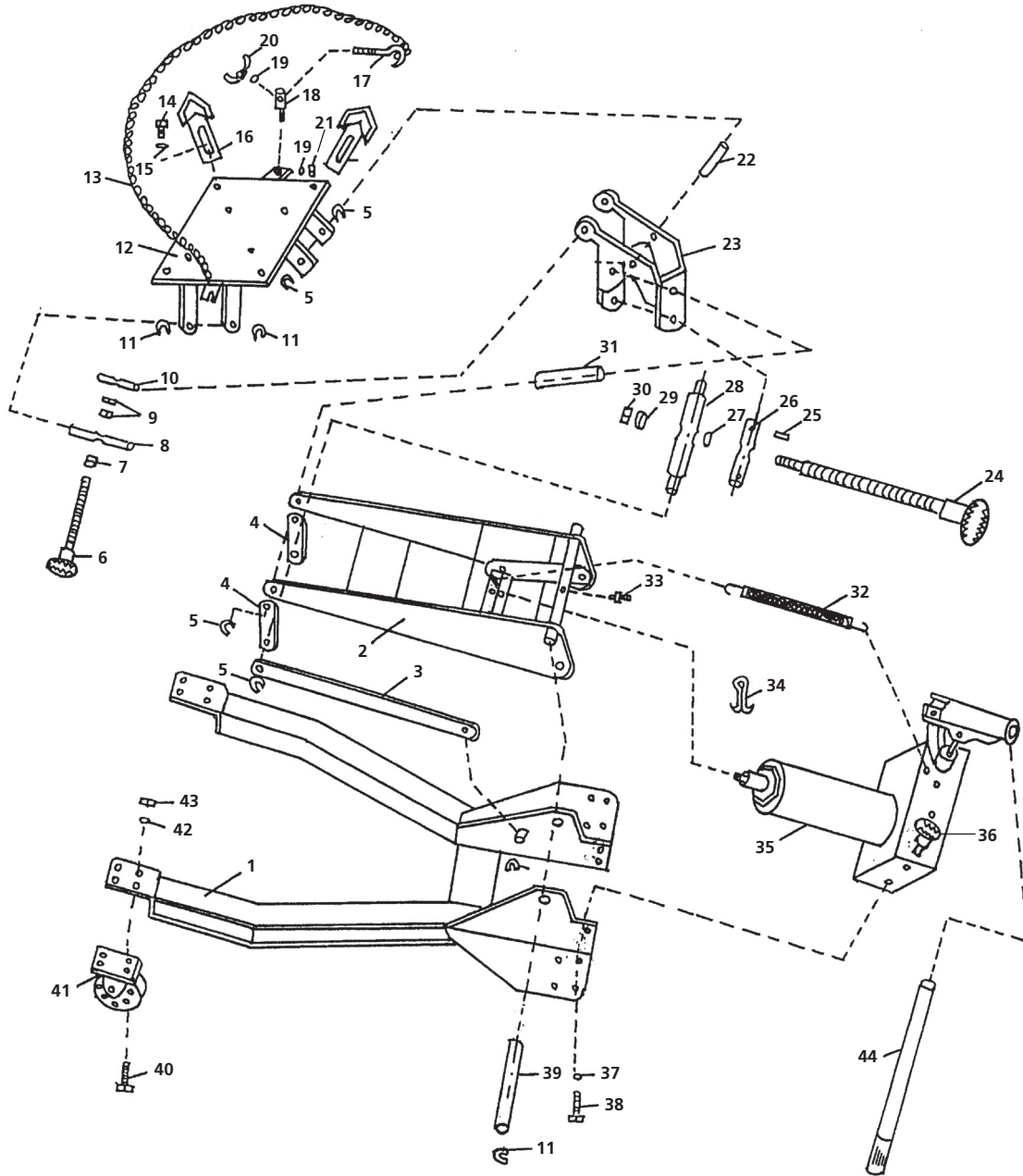
1. To lift load, pump lever to raise saddle to desired height to contact transmission.
2. Always position the jack so the weight of the load is equally distributed on the saddle.
3. Position corner support brackets and secure the load with chain.
4. Attach stud (item #18) to the bracket on the side of the saddle.
5. Insert hook (item #17) through the eyebolt and attach the wing nut to the first couple of threads on the J bolt.
6. The chain should be pulled over the load securely and engaged into slot on the opposite side of the saddle, then tighten wing nut.
7. To lower the jack, slowly open release valve. Insure that load is lowered slowly.

CAUTION: Keep hands or feet away from the hinge mechanism of the jack.

MAINTENANCE INSTRUCTIONS

All moving joints require lubrication often. Oil or grease lift arm linkages, adjusting rod threads and casters.

PARTS BREAKDOWN - CTJ-1200LP



REF NUMBER	PART NUMBER	DESCRIPTION	QTY.
1		Main Frame	1
2	RS7750A02BL2	Lift Arm	1
3	RS7750A03BL2	Lift Arm Strap	2
4	RS7750A04BL2	Front Link	2
5	*	Snap Ring	8
6	RS7750A06	Adj. Screw Assembly w/Knob (side)	1
7	*	Spacer	1
8	*	Side Pivot/Front	1
9	*	Hex Nut	2
10	*	Side Pivot/Back	1
11	*	Snap Ring	4
12	RS7750B12	Saddle Assembly	1
13	RS6648BK	Bolt (Chain) Kit	1
14	*	Hex Bolt	8
15	*	Washer	8
16	RS664606	Finger	4
17	*	Hook	1
18	*	Stud	1
19	*	Washer	2
20	*	Wing Nut	1
21	*	Hex Nut	1
22	*	Side Pivot Shaft	1

REF NUMBER	PART NUMBER	DESCRIPTION	QTY.
23	RS7750B23	Saddle Support Assembly	1
24	RS7750B24	Adj. Screw Assembly w/Knob (forward)	1
25	*	Spring Pin	2
26	*	Forward Pivot/Front	1
27	*	Washer	1
28	*	Forward Pivot/Back	1
29	*	Bearing	1
30	*	Lock Nut	1
31	*	Forward Pivot Shaft	1
32	RS7750A32	Return Spring	1
33		Grease Fitting	1
34	*	Cotter Pin	1
35	RS7750A35BL2	Hydraulic Unit	1
36	RS7750A36	Release Valve Stem	1
37	*	Lock Washer	4
38	*	Hex Cap Screw	4
39	RS7750A39	Lift Arm Pivot Pin	1
40	**	Hex Cap Screw	16
41	RSSC301A	Caster	4
42	**	Washer	16
43	**	Lock Nut	16
44	RS7750A44	Handle	1

- * RS7750A06 Includes Part Nos. 6, 7, 8, 9 (2), 10, 11 (2)
- * RS7750B12 Includes all items 5 through 31
- * RS7750B23 Includes Part Nos. 5 (4), 22, 23, 31
- * RS7750B24 Includes Part Nos. 5 (2), 24, 25 (2), 26, 27, 28, 29, 30
- * RS7750A35BL2 Includes Part Nos. 34, 35, 36, 37 (4), 38 (4), 44
- * RS7750A39 Includes Part Nos. 11 (2), 39

- * RS6648BK Includes Part Nos. 13, 14 (8), 15 (8), 17, 18, 19 (2), 20, 21
- * RS7750ASK Seal Kit for Hydraulic Unit RS7750A35
- ** RS305004WK Wheel Kit, includes 8 ea. of 40, 42, 43. Two Kits required.

WARRANTY COVERAGE

Cornwell Quality Tools Company ("Cornwell") warrants against defects in material and workmanship on this product for a period of TWO (2) YEARS from the date of original retail purchase. Subject to the conditions and limitations set forth below, Cornwell will, at its option, either repair or replace any part of the product(s) that proves defective by reason of improper workmanship or materials.

This warranty does not cover any damage to this product that results from accident, abuse, misuse, natural or personal disaster, or any unauthorized disassembly, repair, or modification. Repairs, disassembly and modification are only authorized to be made by Cornwell or a warranty service center approved by Cornwell.

WARRANTY SERVICE

To obtain warranty service, contact your Cornwell dealer, or you may ship the product to the nearest Cornwell Authorized Warranty Center (see listing), transportation prepaid. You must include your name and address, proof of the date of original retail purchase (receipt), and a detailed description of the problem you are experiencing and suspected defect.

EXCLUSIONS AND LIMITATIONS

THIS WARRANTY AND THE REMEDIES SET FORTH ABOVE ARE EXCLUSIVE AND IN LIEU OF ALL OTHER WARRANTIES, REMEDIES AND CONDITIONS, WHETHER ORAL OR WRITTEN, EXPRESS OR IMPLIED. CORNWELL SPECIFICALLY DISCLAIMS ANY AND ALL IMPLIED WARRANTIES, INCLUDING, TO THE EXTENT PERMITTED BY APPLICABLE LAW, ANY

WARRANTIES OF MERCHANTABILITY AND FITNESS FOR A PARTICULAR PURPOSE. IF CORNWELL CANNOT LAWFULLY DISCLAIM IMPLIED WARRANTIES UNDER THIS LIMITED WARRANTY, ALL SUCH IMPLIED WARRANTIES ARE LIMITED IN DURATION TO THE DURATION OF THIS WARRANTY.

IN NO EVENT SHALL CORNWELL BE LIABLE TO THE PURCHASER OR TO THE USER OF A CORNWELL PRODUCT FOR ANY SPECIAL, INCIDENTAL OR CONSEQUENTIAL DAMAGES BASED UPON BREACH OF WARRANTY, BREACH OF CONTRACT, NEGLIGENCE, TORT, OR ANY OTHER LEGAL THEORY. SUCH DAMAGES INCLUDE, WITHOUT LIMITATION, EXPENSES, LOST REVENUES, LOST SAVINGS, LOST PROFITS, OR ANY OTHER INCIDENTAL OR CONSEQUENTIAL DAMAGES ARISING FROM THE PURCHASE, USE OR INABILITY TO USE THE CORNWELL PRODUCT.

Some states do not allow the exclusion or limitation of incidental or consequential damages or exclusions or limitation on the duration of implied warranties or conditions, so the above limitations or exclusions may not apply to you. This warranty gives you specific legal rights, and you may also have other rights that vary by state.

Repair kits and replacement parts are available for many Cornwell products, regardless of whether or not the product is still covered by a warranty plan.

Cornwell Quality Tools Company
667 Seville Road • Wadsworth, OH 44281-1094