

- **Operating Manual**
- **Warning Information**
- **Parts List**



*Meets or exceeds ASME PALD-1997 standards for performance & safety.*

**! WARNING**

THE USE OF THIS JACK IS LIMITED TO THE REMOVAL, INSTALLATION, AND TRANSPORTATION IN THE LOWERED POSITION, OF TRANSMISSIONS AND DIFFERENTIALS. IT MAY BE USED WITH APPROPRIATE ADAPTERS MANUFACTURED SPECIFICALLY FOR THE JACK TO HANDLE OTHER COMPONENTS, SUCH AS REAR AXLE UNITS AND TRANSFER CASES, WITHIN THE WEIGHT LIMITATIONS SPECIFIED. NO ALTERATION TO THE JACK OR ADAPTERS SHALL BE MADE.

BE SURE THE VEHICLE IS APPROPRIATELY SUPPORTED BEFORE STARTING REPAIRS.

DO NOT OVERLOAD. OVERLOADING CAN CAUSE DAMAGE TO OR FAILURE OF THE JACK.

ONLY ATTACHMENTS AND/OR ADAPTERS SUPPLIED BY THE MANUFACTURER SHALL BE USED.

THIS JACK IS DESIGNED FOR USE ONLY ON HARD LEVEL SURFACES CAPABLE OF SUSTAINING THE LOAD. USE ON OTHER THAN HARD LEVEL SURFACES CAN RESULT IN JACK INSTABILITY AND POSSIBLE LOSS OF LOAD.

READ, STUDY AND UNDERSTAND THE OPERATING MANUAL PACKED WITH THIS JACK BEFORE OPERATING.

FAILURE TO HEED THESE WARNINGS MAY RESULT IN LOSS OF LOAD, DAMAGE TO JACK, AND/OR FAILURE RESULTING IN PROPERTY DAMAGE, PERSONAL OR FATAL INJURY.

**THIS OPERATING MANUAL CONTAINS IMPORTANT SAFETY INFORMATION.**

**READ CAREFULLY AND UNDERSTAND ALL INFORMATION BEFORE OPERATING THIS TOOL.**

**SAVE THIS MANUAL FOR FUTURE USE.**

**! WARNING**

FOR YOUR SAFETY AND TO PREVENT INJURY:

Use jack for lifting purposes **ONLY**.

Always support vehicle with jack stands.

# CTJ-1000TTJ

## 1000 Lb. Telescopic Transmission Jack

## OWNER/USER RESPONSIBILITY

The owner and/or user must have a thorough understanding of the manufacturer's operating instructions and warnings before using the transmission jack. Personnel involved in the use and operation of equipment shall be careful, competent, trained, and qualified in the safe operation of the equipment and its proper use when servicing motor vehicles and their components. Warning information should be emphasized and understood. If the operator is not fluent in English, the manufacturer's instructions and warnings shall be read to and discussed with the operator in the operator's native language by the purchaser/owner, making sure that the operator comprehends its contents.

Owner and/or user must study and maintain for future reference the manufacturer's instructions and pertinent warning information. Owner and/or user is responsible for keeping all warning labels and instruction manuals legible and intact. Replacement labels and literature are available from the manufacturer.

## INSPECTION

Visual inspection should be made before each use of the transmission jack. Any jack which appears to be damaged in any way, found to be badly worn, or operates abnormally **MUST BE REMOVED FROM SERVICE**. If the jack is accidentally subjected to an abnormal load or shock, it must be inspected by a manufacturer's authorized repair facility immediately. It is recommended that an annual inspection of the jack be made by a manufacturer's authorized repair facility and that any defective parts, decals, or warning labels be replaced with manufacturer's specified parts. All repairs must be made by a factory authorized service center. A list of authorized repair facilities is available from the manufacturer.

## MAINTENANCE INSTRUCTIONS

1. Regularly lubricate all moving parts, paying close attention to the tilt screws and related linkages.
2. Regularly check the oil level in ram. With the saddle in the lowest position, the oil level should be up to the filler screw hole. use SAE 30 hydraulic jack oil, do not use hydraulic brake fluid.
3. If jack fails to operate - check oil level and/or bleed air from unit.

## IMPORTANT! BEFORE USE

Check to see if oil level is up to the hole. Fill if necessary with clean hydraulic jack oil. NOTE: jack will not operate properly unless full of jack oil.

*Sometimes during shipment and handling, air gets into the hydraulic system, causing poor lifting performance.*

**Bleeding the pump:** With the release lever down, pump pedal several times to force excess air from the piston area. It should then be possible to raise the ram with normal foot pedal action.

**Bleeding the ram:** Pump the ram up until it is fully extended by slowly pumping the foot pedal. Loosen the purge plug on top of the first stage ram. Air will be released as the saddle slowly comes down. When oil begins to leak out of the purge plug, tighten it finger tight.

## ASSEMBLY INSTRUCTIONS

1. Install legs to chassis by using (1-6) bolts, (1-8) nuts, and (1-7) washers.
2. Install leg assemblies to hydraulic power unit by using (2-10) bolts, (2-12) nuts, and (2-11) washers.  
Do not use any kind of air ratchet or air gun to tighten any bolt on this unit!
3. Assemble hydraulic power unit and saddle head plate assembly.
4. Assemble saddle head attachments. Always use the load restraint strap!

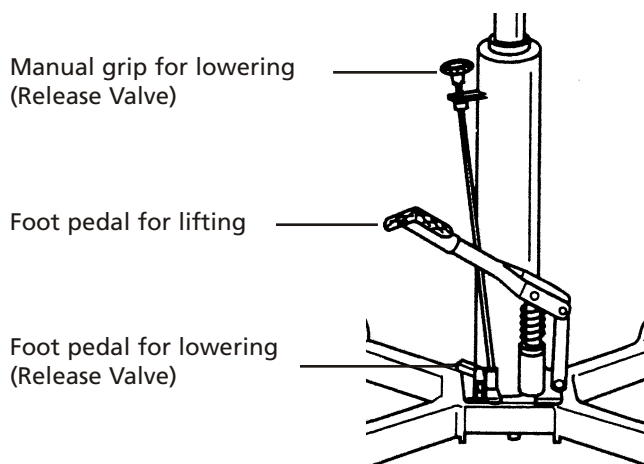
## OPERATING INSTRUCTIONS

1. Lifting: Close release valve first, pump pedal to raise saddle to contact load. Position jack so weight of load will be equally distributed on saddle, and adjust pitch and tilt controls as necessary. Position corner support brackets and secure load with Load Restraint Strap.

### WARNING:

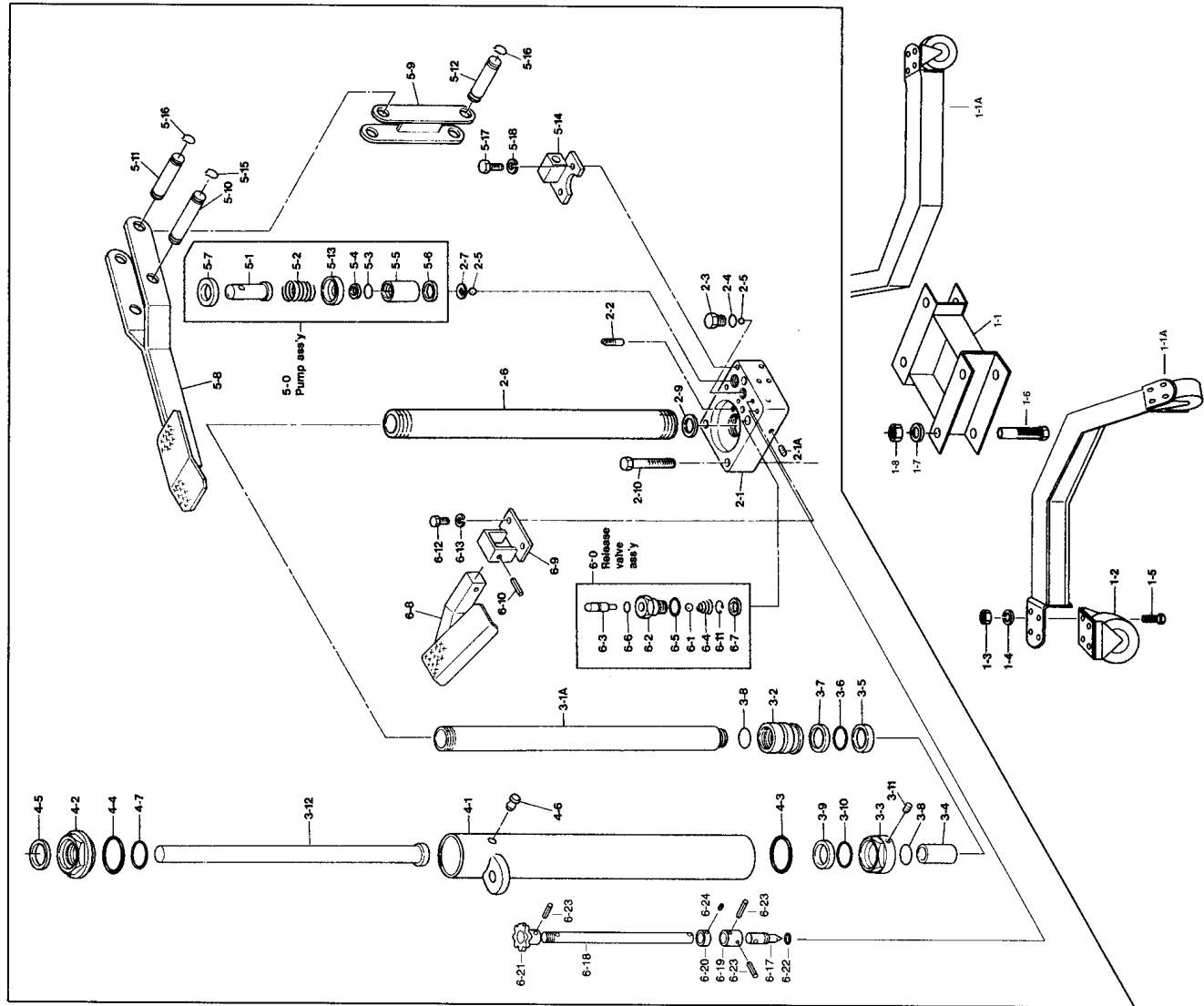
**Always use the Load Restraint Strap, Corner Support Brackets, and attachments to stabilize and firmly secure the load to the saddle.** The strap should be used as follows: Place the strap over the load and hook into eyelet on opposite side of saddle. Then, depress lock plate and pull strap tight. To loosen, depress lock plate and pull strap back through lock.

2. Lowering: This jack features two lowering systems:
  - 1) Foot Pedal: press foot pedal slowly to open the release valve.
  - 2) Manual Grip: turn manual grip counterclockwise slowly to open the release valve.

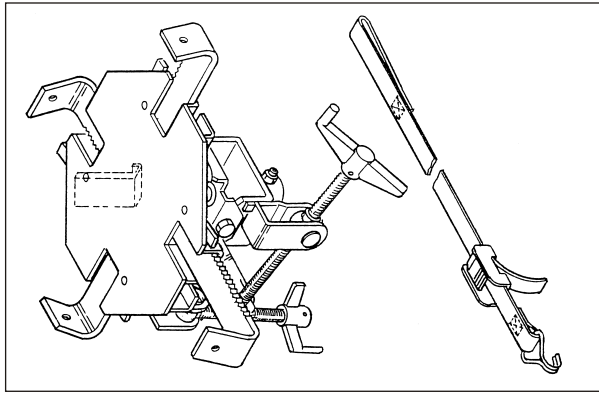


# PARTS BREAKDOWN - CTJ-1000TTJ

## 50-0 Hydraulic Power Unit Assembly



## 7-0A Saddle Assembly



| Ref. No. | Part No.     | Part Description         | Qty./set | Ref. No. | Part No.      | Part Description                           | Qty./set |
|----------|--------------|--------------------------|----------|----------|---------------|--|----------|
| 1-1A     | RS779711ABL2 | Leg                      | 2        | 5-8      |               | Foot Pedal For Lifting                     | 1        |
| 1-1      | RS779711BL2  | Chassis                  | 1        | 5-9      |               | Link                                       | 1        |
| 1-2      | RSSC301A     | Swivel Caster            | 4        | 5-10     |               | Plunger Pin                                | 1        |
| 1-3      | RS305004WK   | Nut Inc. Ref. #1-4 – 1-5 | 2        | 5-11     |               | Pin A                                      | 1        |
| 1-4      |              | Spring Washer            |          | 5-12     |               | Pin B                                      | 1        |
| 1-5      |              | Bolt                     |          | •5-13    |               | Spring Retainer B                          | 1        |
| 1-6      |              | Bolt                     | 4        | 5-14     |               | Link Bracket                               | 1        |
| 1-7      |              | Spring Washer            | 4        | 5-15     |               | Cotter Pin                                 | 2        |
| 1-8      |              | Nut                      | 4        | 5-16     |               | Cotter Pin                                 | 4        |
| 2-1      |              | Oil Box                  | 1        | 5-17     |               | Hex Head Bolt                              | 2        |
| 2-1A     |              | Plug With Hex Head Hole  | 7        | 5-18     |               | Spring Washer                              | 1        |
| 2-2      |              | Oil Strainer             | 1        | 6-0      | RS779760      | Release Valve Assembly                     | 1        |
| 2-3      |              | Blind Bolt               | 1        | •6-1     |               | Steel Ball                                 | 1        |
| 2-4      |              | Copper Packing           | 1        | •6-2     |               | Release Valve Lock Nut                     | 1        |
| 2-5      |              | Steel Ball               | 2        | •6-3     |               | Throttle                                   | 1        |
| 2-6      |              | Cylinder                 | 1        | •6-4     |               | Spring                                     | 1        |
| 2-7      |              | Lock Washer              | 1        | •6-5*    |               | O-Ring                                     | 1        |
| 2-9      |              | Copper Packing           | 1        | •6-6*    |               | O-Ring                                     | 1        |
| 2-10     |              | Bolt                     | 3        | •6-7*    |               | Copper Packing                             | 1        |
| 2-11     |              | Spring Washer            | 3        | •6-11    |               | Snap Ring                                  | 1        |
| 2-12     |              | Hex Head Nut             | 3        | 6-8      |               | Foot Pedal For Lowering<br>(release valve) | 1        |
| 3-1A     |              | Piston Rod (Big)         | 1        | 6-9      |               | Pedal Bracket                              | 1        |
| 3-2      |              | Packing Step             | 1        | 6-10     |               | Spring Pin                                 | 1        |
| 3-3      |              | Grand Nut                | 1        | 6-12     |               | Hex Head Bolt                              | 1        |
| 3-4      |              | Sleeve                   | 1        | 6-13     |               | Spring Washer                              | 2        |
| 3-5*     |              | Extra Bearing            | 1        | 6-17     | RS7797617     | Release Valve                              | 1        |
| 3-6*     |              | O-Ring                   | 2        | 6-18     | RS7797618     | Release Valve Rod                          | 1        |
| 3-7*     |              | Back-Up Ring             | 1        | 6-19     |               | Collar                                     | 1        |
| 3-8*     |              | O-Ring                   | 2        | 6-20     |               | Stop Collar                                | 1        |
| 3-9*     |              | Oil Seal                 | 1        | 6-21     |               | Release Valve Grip                         | 1        |
| 3-10*    |              | O-Ring                   | 1        | 6-22     |               | O-Ring                                     | 1        |
| 3-11     |              | Plug with Hex Head Hole  | 1        | 6-23     |               | Spring Pin                                 | 3        |
| 3-12     |              | Piston Rod (Small)       | 1        | 6-24     |               | Screw                                      | 1        |
| 4-1      |              | Oil Tank                 | 1        | 7-0A     | RS779970      | Saddle Assembly (incl. strap)              | 1        |
| 4-2      |              | Tank Nut                 | 1        |          | RS779970STRAP | Strap for RS779970 Saddle                  |          |
| 4-3*     |              | O-Ring                   | 1        | 50-0     | RS779750-0BL2 | Hydraulic Power Unit Assembly              | 1        |
| 4-4*     |              | O-Ring                   | 1        |          |               |  |          |
| 4-5*     |              | Oil Seal                 | 1        |          |               |  |          |
| 4-6      |              | Oil Fill Cap             | 1        |          |               |  |          |
| 4-7*     |              | O-Ring                   | 1        |          |               |  |          |
| 5-0      | RS779750     | Pump Assembly            |          |          |               |  |          |
| •5-1     |              | Plunger                  | 1        |          |               |  |          |
| •5-2     |              | Spring                   | 1        |          |               |  |          |
| •5-3*    |              | O-Ring                   | 1        |          |               |  |          |
| •5-4*    |              | Oil Seal                 | 1        |          |               |  |          |
| •5-5*    |              | Pump Cylinder            | 1        |          |               |  |          |
| •5-6     |              | Copper Packing           | 1        |          |               |  |          |
| •5-7     |              | Spring Retainer          | 1        |          |               |  |          |

\* Means these items are available as a Seal Kit Part #RS7797SK.

• Means items come as an assembly only.

NOTE: Reference Numbers without Part Numbers are not available.

**CTJ-1000TTJ SPECIFICATIONS**

|                                |                   |
|--------------------------------|-------------------|
| Capacity .....                 | 1000 Lbs.         |
| Low Height .....               | 33"               |
| Raised Height .....            | 69"               |
| Saddle Tilt Forward .....      | 15°               |
| Saddle Tilt Backward .....     | 20°               |
| Saddle Tilt Side to Side ..... | 10°               |
| Base .....                     | 35-1/2" x 33-1/2" |
| Shipping Weight .....          | 170 Lbs.          |

**WARRANTY COVERAGE**

Cornwell Quality Tools Company ("Cornwell") warrants against defects in material and workmanship on this product for a period of TWO (2) YEARS from the date of original retail purchase. Subject to the conditions and limitations set forth below, Cornwell will, at its option, either repair or replace any part of the product(s) that proves defective by reason of improper workmanship or materials.

This warranty does not cover any damage to this product that results from accident, abuse, misuse, natural or personal disaster, or any unauthorized disassembly, repair, or modification. Repairs, disassembly and modification are only authorized to be made by Cornwell or a warranty service center approved by Cornwell.

**WARRANTY SERVICE**

To obtain warranty service, contact your Cornwell dealer, or you may ship the product to the nearest Cornwell Authorized Warranty Center (see listing), transportation prepaid. You must include your name and address, proof of the date of original retail purchase (receipt), and a detailed description of the problem you are experiencing and suspected defect.

**EXCLUSIONS AND LIMITATIONS**

THIS WARRANTY AND THE REMEDIES SET FORTH ABOVE ARE EXCLUSIVE AND IN LIEU OF ALL OTHER WARRANTIES, REMEDIES AND CONDITIONS, WHETHER ORAL OR WRITTEN, EXPRESS OR IMPLIED. CORNWELL SPECIFICALLY DISCLAIMS ANY AND ALL IMPLIED WARRANTIES, INCLUDING, TO THE EXTENT PERMITTED BY APPLICABLE LAW, ANY WARRANTIES OF MERCHANTABILITY AND FITNESS FOR A PARTICULAR PURPOSE. IF CORNWELL CANNOT LAWFULLY DISCLAIM IMPLIED WARRANTIES UNDER THIS LIMITED WARRANTY, ALL SUCH IMPLIED WARRANTIES ARE LIMITED IN DURATION TO THE DURATION OF THIS WARRANTY.

IN NO EVENT SHALL CORNWELL BE LIABLE TO THE PURCHASER OR TO THE USER OF A CORNWELL PRODUCT FOR ANY SPECIAL, INCIDENTAL OR CONSEQUENTIAL DAMAGES BASED UPON BREACH OF WARRANTY, BREACH OF CONTRACT, NEGLIGENCE, TORT, OR ANY OTHER LEGAL THEORY. SUCH DAMAGES INCLUDE, WITHOUT LIMITATION, EXPENSES, LOST REVENUES, LOST SAVINGS, LOST PROFITS, OR ANY OTHER INCIDENTAL OR CONSEQUENTIAL DAMAGES ARISING FROM THE PURCHASE, USE OR INABILITY TO USE THE CORNWELL PRODUCT.

Some states do not allow the exclusion or limitation of incidental or consequential damages or exclusions or limitation on the duration of implied warranties or conditions, so the above limitations or exclusions may not apply to you. This warranty gives you specific legal rights, and you may also have other rights that vary by state.

Repair kits and replacement parts are available for many Cornwell products, regardless of whether or not the product is still covered by a warranty plan.

Cornwell Quality Tools Company  
667 Seville Road • Wadsworth, OH 44281-1094