

**OPERATING MANUAL • WARNING INFORMATION • PARTS LIST****⚠ WARNING****FOR YOUR SAFETY AND TO PREVENT INJURY:**

- Read, study, understand & follow all instructions before using.
- Always wear safety goggles (users & bystanders).
- Extreme pressure may cause whip hose to burst. Use only approved hoses and follow the hose instructions and warnings.
- This air operated Grease Gun can develop high pressures - up to 3,600 psig. Use safety glasses and gloves while operating the gun. Keep hands clear of the exposed rubber portion of the hose while operating the gun with hose.
- If fluid appears to penetrate the skin, seek immediate medical attention. Do not treat as simple cut.
- Be sure the trigger is not depressed when attaching the Gun to an air inlet hose.
- Avoid accidental starting.
- Hold the hose only by the metal spring guards on the end.
- Do not allow the hose to kink. Do not bend the hose in a tight radius.
- Replace the hose at first sign of wear, kink or damage to the outside jacket.
- Use only high pressure Grease Gun as a replacement.
- Failure to heed these warnings may result in serious or fatal personal injury, property damage or both.



WARNING: This product can expose you to chemicals including nickel, which is known to the State of California to cause cancer and birth defects or other reproductive harm. For more information go to www.P65Warnings.ca.gov.

SPECIFICATIONS

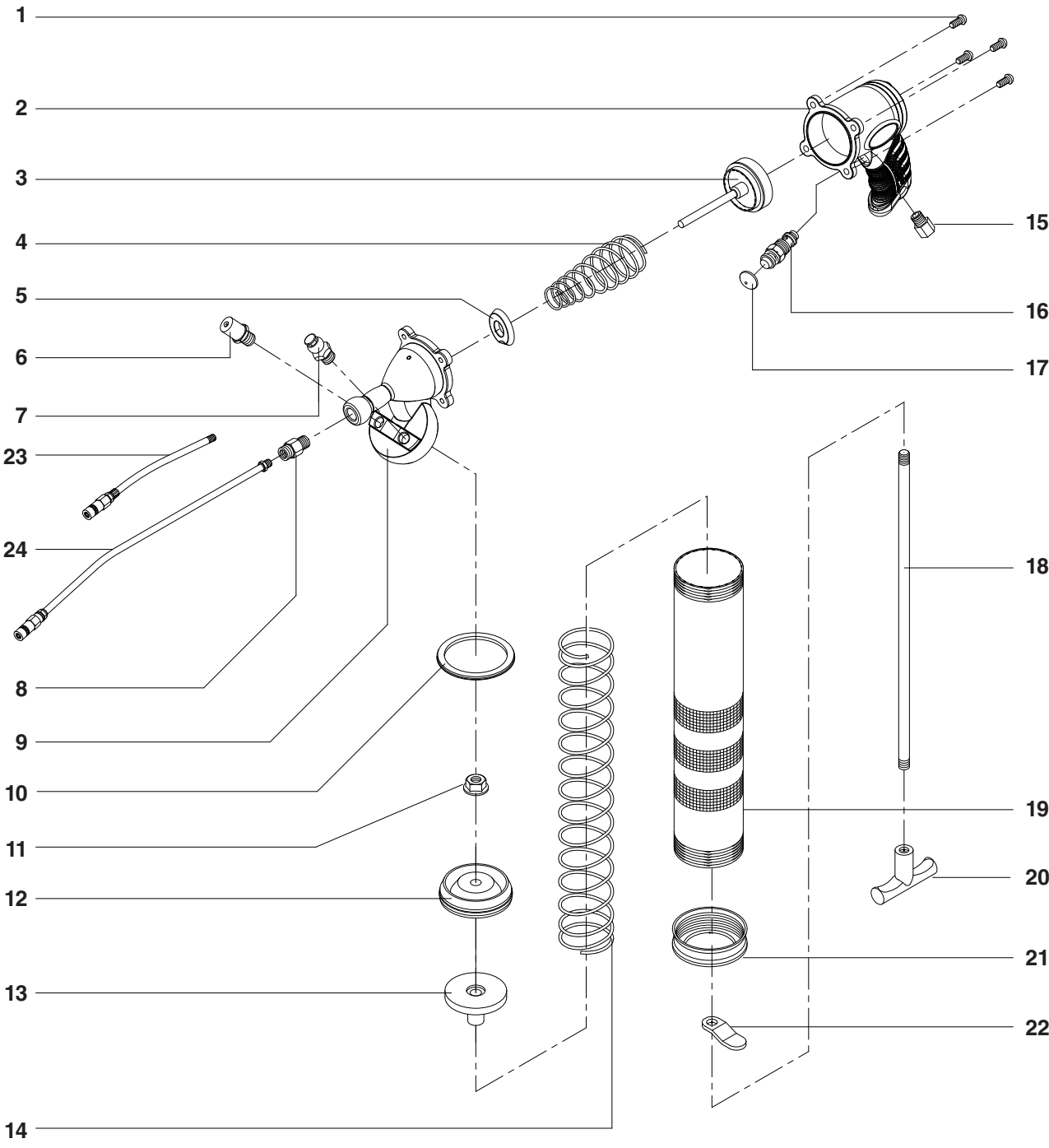
Pump Ratio (max):	40:1
Output per Stroke:	2 ml
Pneumatic Inlet Pressure (min):	40 PSIG
Pneumatic Inlet Pressure (max):	100 PSIG
Grease Output Pressure:	3,600 PSIG
Grease Reservoir Capacity:	14 oz
Operating Temperature Range:	14°-104°
Weight (empty):	2.2 lbs
Lubricant up to NLGI:	#2 Grease
Pneumatic Port Inlet:	1/4" NPT
Grease Port Outlet:	1/8" NPT

The pistol-style, Single Shot Air Grease Gun is a specially designed, high quality, professional air tool for automotive, truck and industrial applications.

⚠ WARNING**FOR YOUR SAFETY AND TO PREVENT INJURY:**

- High pressure hazard.
- Wear safety goggles.
- Do not exceed 40 psi with hose or 100 psi with solid extension To do so may cause personal injury.

PARTS BREAKDOWN - CTGSSAGG



Ref. #	Item #	DESCRIPTION	QTY	Ref #	Item#	DESCRIPTION	QTY
1	RS901601	Screw	4	13	RS901116	Backlash Gasket	1
2	RSSSAGG02	Finger Grip	1	14	RS901117	Long Spring	1
3	RS901105	Piston	1	15	RS901611	Air Inlet	1
4	RS901106	Spring	1	16	RS901612	Switch	1
5	RS901605	Gasket	1	17	RS901613	Trigger	1
6	RS901111	Filler Plug	1	18	RSSSAGG18	Piston Rod	1
7	RS901607	Air Vent Valve	1	19	RSSSAGG19	Container Tube	1
8	RS901108	Adapter	1	20	RSCSGGA27	Handle	1
9	RSSSAGG09	Housing Cap	1	21	RSSSAGG21	End Cap	1
10	RS901614	Gasket	1	22	RS901121	Locking Plate	1
11	RSSSAGG11	Nut	1	23	RS901608	6" Hex Bent Metal Spout	1
12	RS901115	Plunger	1	24	RSSSAGG24	12" High Pressure Grease Hose	1

It is the responsibility of the owner to make sure all personnel read this manual prior to using the device. It is also the responsibility of the device owner to keep this manual intact and in a convenient location for all to see and read. If the manual or product labels are lost or not legible, contact Cornwell Tools® for replacements. If the operator is not fluent in English, the product and safety instructions shall be read and discussed with the operator in the operator's native language by the purchaser/owner or his designee, making sure that the operator comprehends its contents.

Make sure that Grease Gun is disconnected from air supply prior to adding or removing the Grease Gun cartridge.

FEATURES AND FUNCTIONS

- Heavy duty composite body for lighter weight and easier use
- 3 way loading - bulk, 14 oz. cartridge, filler pump
- Bleeder valve for purging unwanted air
- Weighs only 2.2 lbs
- Includes 6" bent metal spout and 12" high pressure grease hose

PROPER GREASE GUN USE

This Air Powered Single Shot Grease Gun was developed for the specific purpose of dispensing grease by using pneumatic power.

The maximum rating listed in the specifications, should not be exceeded.

This tool should only be used for its designed purpose and according to the instructions in this manual.

GENERAL CAUTIONARY NOTES

Do not allow bystanders, children or other on-lookers in the work area as they can cause distractions, which may lead to mistakes and accidents.

Carefully inspect the equipment for damaged, loose or missing parts. If the unit is worn or damaged, do not use it and contact an authorized service center for evaluation or repair.

The Single Shot Grease Gun must be primed after each refill or grease cartridge change. You should also check the priming of the gun before each use.

For best performance and to extend product life, add a few drops of air tool oil through the air fitting at the bottom of the handle if gun begins to cycle slowly or erratically.

CAUTION!

Air pockets in the cartridge will cause the gun to lose prime.

INSTRUCTIONS FOR CARTRIDGE LOADING

1. Make sure that the Grease Gun is disconnected from the air supply prior to adding or removing the Grease Cartridge.
2. Remove the gun head from the container tube.
3. Completely draw back the plunger handle.
4. Insert open end of cartridge into container tube and push all the way in. Remove the seal or pull tab end from the cartridge.
5. Reassemble the gun head to the container tube. Press the catch plate and release the piston rod. Pull down the plunger handle.



SUCTION FILLING

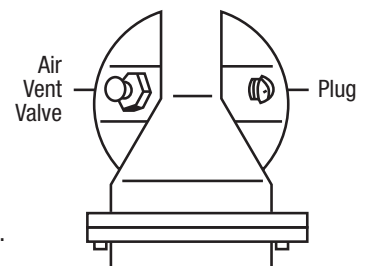
1. Make sure that the Grease Gun is disconnected from the air supply prior to adding or removing the Grease Cartridge.
2. Remove the gun head from the container tube.
3. Submerge open end of the container tube into grease bucket about 2" deep and pull the plunger handle out slowly and engage rod into key slot.
4. Reassemble the gun head to the container tube. Press the catch plate and release the piston rod. Pull down the plunger handle.



TROUBLESHOOTING

If your guns fails to work, first check for air pockets in the gun. To remove trapped air, unscrew the gun head 1 to 1-1/2 turns and do as follows:

1. Draw back plunger rod fully and release quickly. Repeat several times.
2. Push plunger rod all the way in.
3. Tighten the head to the barrel.
4. Press air vent valve several times to expel the air.





WARRANTY COVERAGE

Cornwell warrants its air tools for a period of 1 year to the consumer. We will repair any air tool covered under this warranty which proves to be defective in material or workmanship during the warranty period. In order to have your tool repaired, return the tool to any Cornwell Authorized Warranty Center, freight prepaid. Please include a copy of your proof of purchase and a brief description of the problem. The tool will be inspected and if any part or parts are found to be defective in material or workmanship, they will be repaired free of charge and the repaired tool will be returned to you freight prepaid.

This warranty gives you specific rights. You may also have other rights which vary from state to state.

The foregoing obligation is Cornwell's sole liability under this or any implied warranty and under no circumstances shall Cornwell be liable for any incidental or consequential damages.

Note: Some states do not allow the exclusion or limitation of incidental or consequential damages, so the above limitation or exclusion may not apply to you.