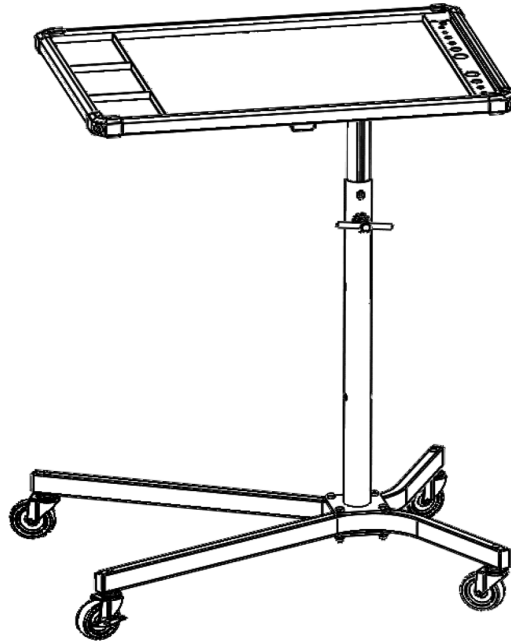




CTBT30KB (CORPORATE BLUE)
CTBT30KMK (MATTE BLACK)
CTBT30KMS (MATTE SILVER)
Premium Rolling Work Table

OPERATING MANUAL • WARNING INFORMATION • PARTS LIST



It is the responsibility of the owner to make sure all personnel read this manual prior to using the device. It is also the responsibility of the device owner to keep this manual intact and in a convenient location for all to see and read. If the manual or product labels are lost or not legible, contact Cornwell Tools for replacements. If the operator is not fluent in English, the product and safety instructions shall be read and discussed with the operator in the operator's native language by the purchaser/owner or his designee, making sure that the operator comprehends its contents. PLEASE NOTE: Loading work table beyond rated capacity may cause structural damage to the work table as well as personal and /or property damage. Please educate your customers to the dangers of overloading.

! WARNING



PLEASE NOTE: Loading work table beyond rated capacity may cause structural damage to the work table as well as personal and/or property damage. Please educate your customers to the "dangers of overloading". Do not attempt to push work table with items on the work table tray.



- Read and follow all instructions in User's Manual.
- Do not load work table beyond rated capacity (75 lbs.)
- Work table is designed to roll easily on flat surfaces and should not be used on uneven or inclined surfaces.
- Do not pull work table.
- Work table can tip or fall causing damage or injury.
- Keep children away from work table.
- Wear gloves when lifting by edges.
- Failure to heed these warnings may result in personal injury and/or property damage.

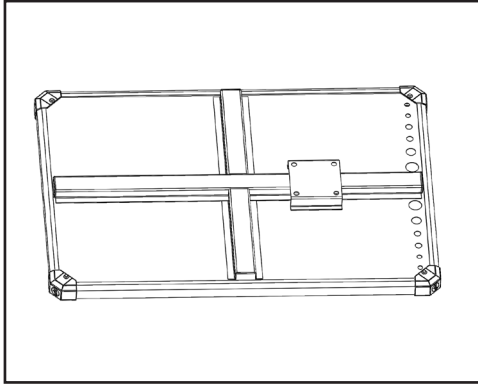


WARNING: This product can expose you to chemicals including nickel, which is known to the State of California to cause cancer and birth defects or other reproductive harm. For more information go to www.P65Warnings.ca.gov.

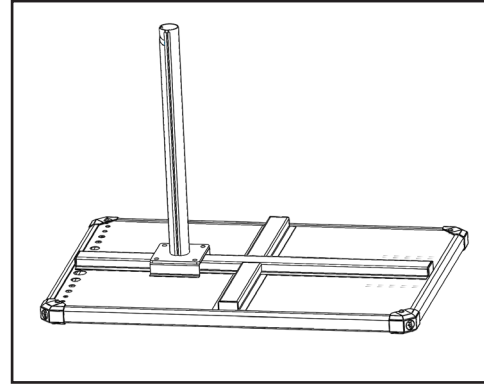


CTBT30KB (CORPORATE BLUE)
CTBT30KMK (MATTE BLACK)
CTBT30KMS (MATTE SILVER)
 Premium Rolling Work Table

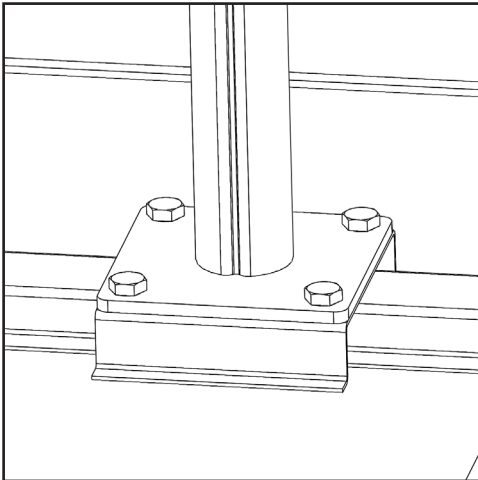
ASSEMBLY INSTRUCTIONS



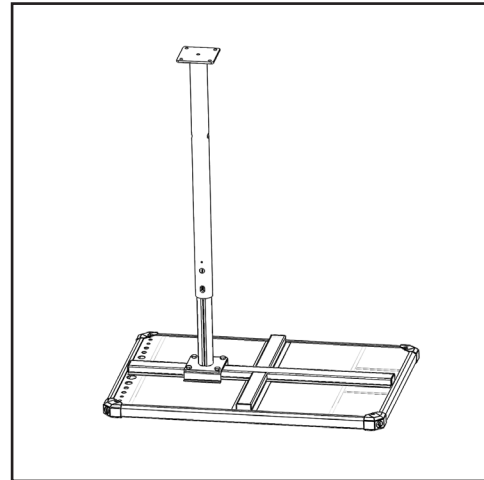
1. Place Table Top, Top Downwards



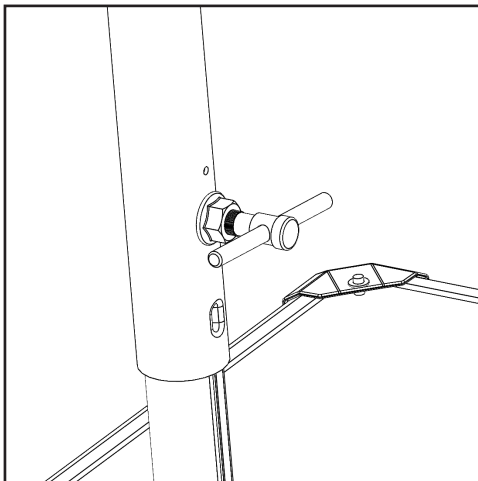
2. Place Galvanized Tube Assembly onto the Four Hole Mount Plate of the Table Top



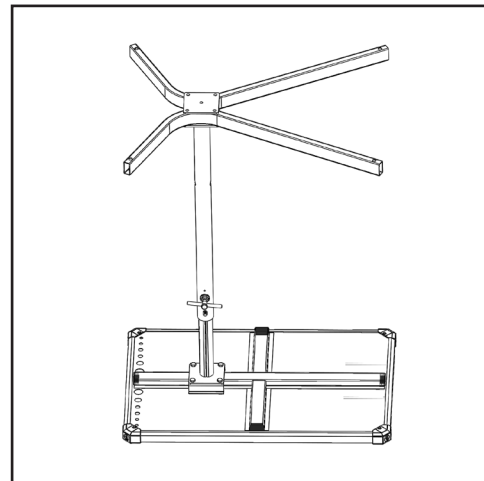
3. Assemble the Four Hex Head Bolts M8-16 to the Table Top



4. Place Painted Tube Assembly onto the Galvanized Tube Assembly



5. Insert and tighten the Threaded Knob Assembly

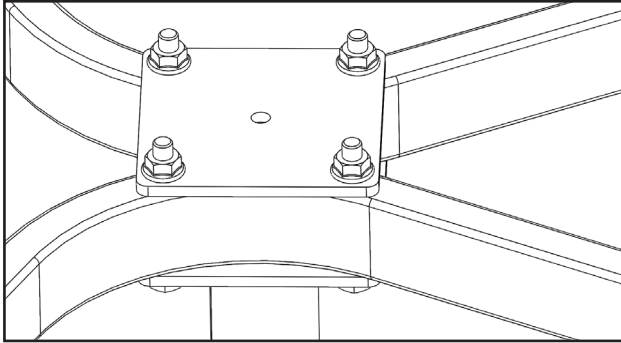


6. Hold the Two Bent Arms & Bottom Plate onto the Painted Tube Assembly

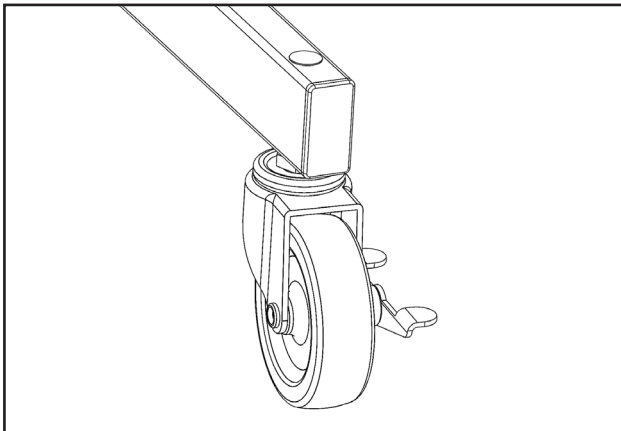


CTBT30KB (CORPORATE BLUE)
CTBT30KMK (MATTE BLACK)
CTBT30KMS (MATTE SILVER)
 Premium Rolling Work Table

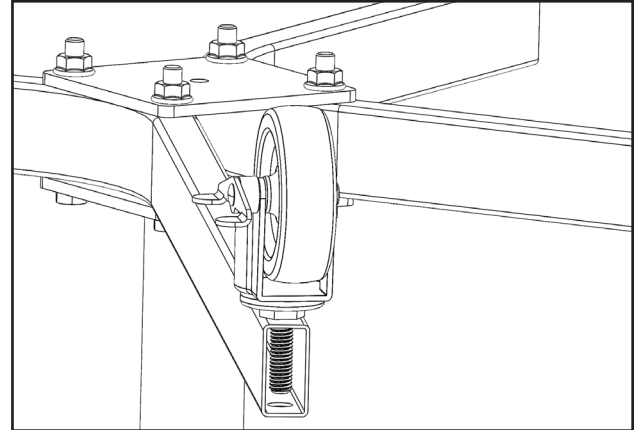
ASSEMBLY INSTRUCTIONS (continued)



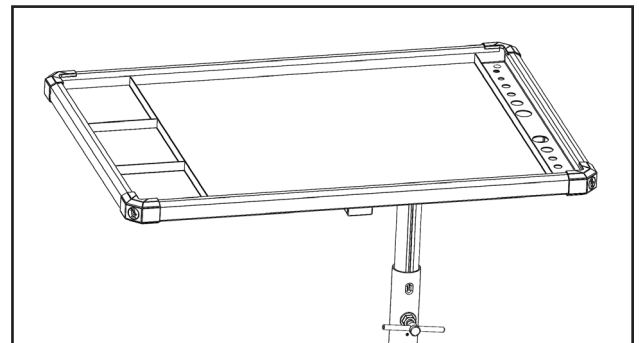
7. Insert the four M8-65 Hex Head Bolts through the Lower Tube Assembly, into each Leg, into the bottom plate and then the four Hex Head Flange Nuts.



9. Place each of the four Leg End Covers onto each leg. Place each of the four drill hole covers into each drill hole.



8. On each Caster, thread on a Jam Nut. Then insert the Caster into the leg hole. Repeat for the remaining three Casters.



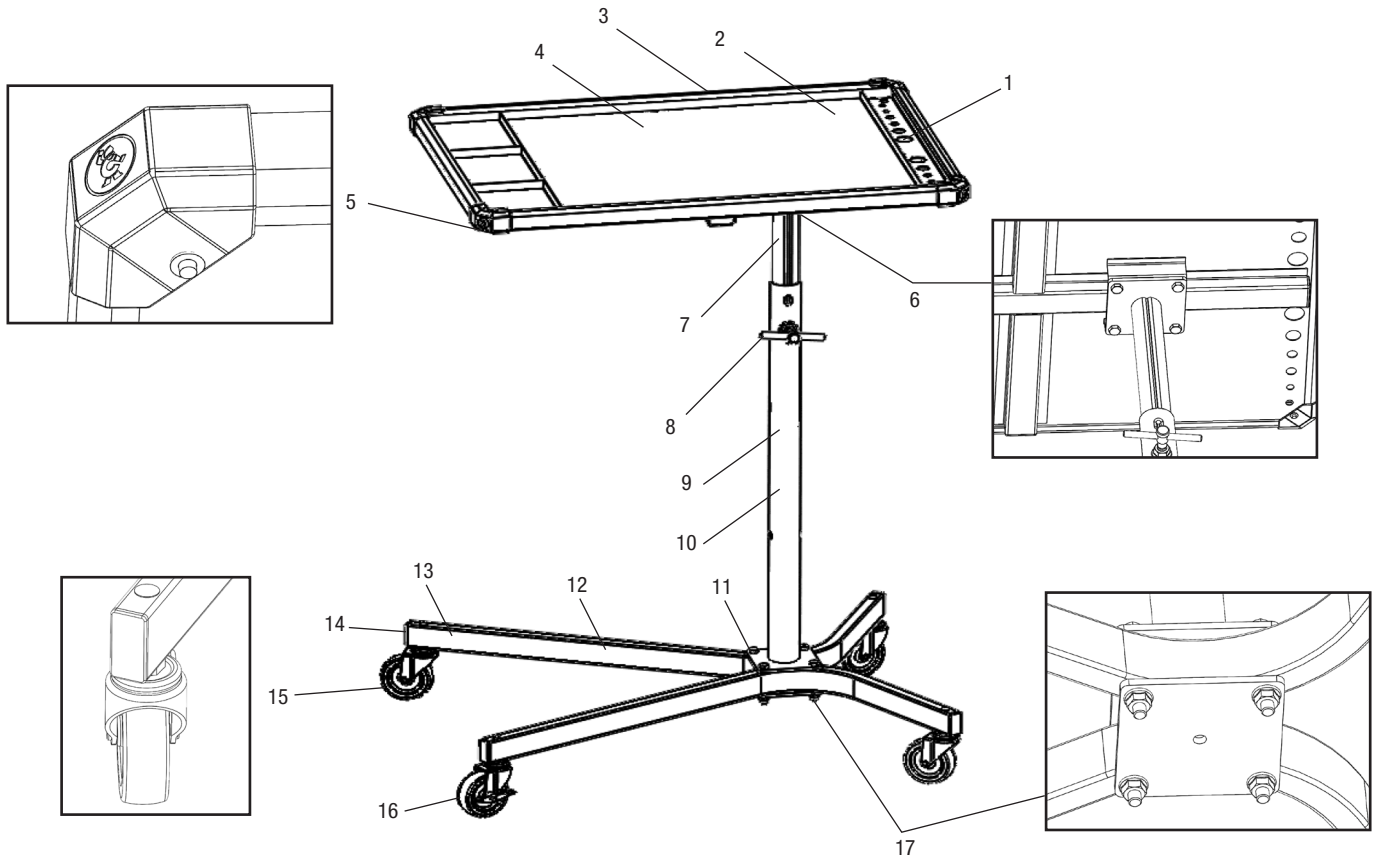
10. Flip over the Work Table Assembly and place the Mats on the Table Top.

SPECIFICATIONS

Height	50 3/8" Max, 34 9/16" Min
Table.....	21"W, 30"L
Wheel Base.....	21.7"W x 27.7"L
Compartments	(3) 6.5"W x 4.9"L
	(1) 19.9"W x 21.9"L
	(1) 19.9"W x 1.9"L
Tool Holes.....	Pry Bars: (2) 1"
	Extensions: (2) 3/4"
	Large Screwdriver: (4) 1/2"
	Medium/Small Screwdrivers: (4) 3/8"
PVC Black Mats	(3) 6.2"W x 4.6"L
	(1) 19.6"W x 21.7"L
Castors.....	(3) 3" x 1" Caster Non-locking
	(1) 3" x 1" Caster Locking
Capacity	75 lbs. Evenly Spaced on Worktable



CTBT30KB (CORPORATE BLUE)
CTBT30KMK (MATTE BLACK)
CTBT30KMS (MATTE SILVER)
 Premium Rolling Work Table



Item #	Part #	Description	QTY.
1		Table Top Assembly	1
2	RSBUMPWT4PK	Rubber Bumper, 4 Pc. - Black	1 set
3	RSLINERWT4PK	Mat (Set of 4) - Black	1 set
4	RSCTBT30CORBK	Corner Pieces w/Rivets (8 Pc.) - Black	1 set
5	RSCOVWT4PK	Cover (4 Pc.) For Table Top Supports - Black	1 set
6	RSCTBT30KCTT	Galvanized Center Tube Top w/Plate	1
7	RSKNOWWTBK	Threaded Knob - Black	1
8	RSCTBT30KCTBMS	Center Tube Bottom - Matte Silver	1
	RSCTBT30KCTBMK	Center Tube Bottom - Matte Black	1
	RSCTBT30KCTBB	Center Tube Bottom - Corporate Blue	1
9	RSCTBT30LOGO	Cornwell Logo Label	1
10	RSWTHDW24KBK	Hardware (24 Pc.) - Black	1 set
11	RSCTBT30KLMS	Single Bend Leg - Matte Silver	2
	RSCTBT30KLMB	Single Bend Leg - Matte Black	2
	RSCTBT30KLB	Single Bend Leg - Corporate Blue	2
12	RSCOVL4PK	Caster Hole Covers (4 Pc.) - Black	1 set
13	RSCOVLE4PK	Leg End Covers (4 Pc.) - Black	1 set
14	RSCAST31LBK	Locking Casters (3"x1") w/Hardware - Black	1
15	RSCAST31BK	Non-Locking Casters, (3"x1") w/Hardware - Black	3
16	RSCTBT30KPBMS	Bottom Plate, 4 Holes - Matte Silver	1
17	RSCTBT30KPBK	Bottom Plate, 4 Holes - Matte Black	1
18	RSCTBT30KPB	Bottom Plate, 4 Holes - Corporate Blue	1
not shown	RSCTBT30KMSPL	Product Label Kit - Matte Silver	1
not shown	RSCTBT30KMKPL	Product Label Kit - Matte Black	1
not shown	RSCTBT30KBPL	Product Label Kit - Corporate Blue	1