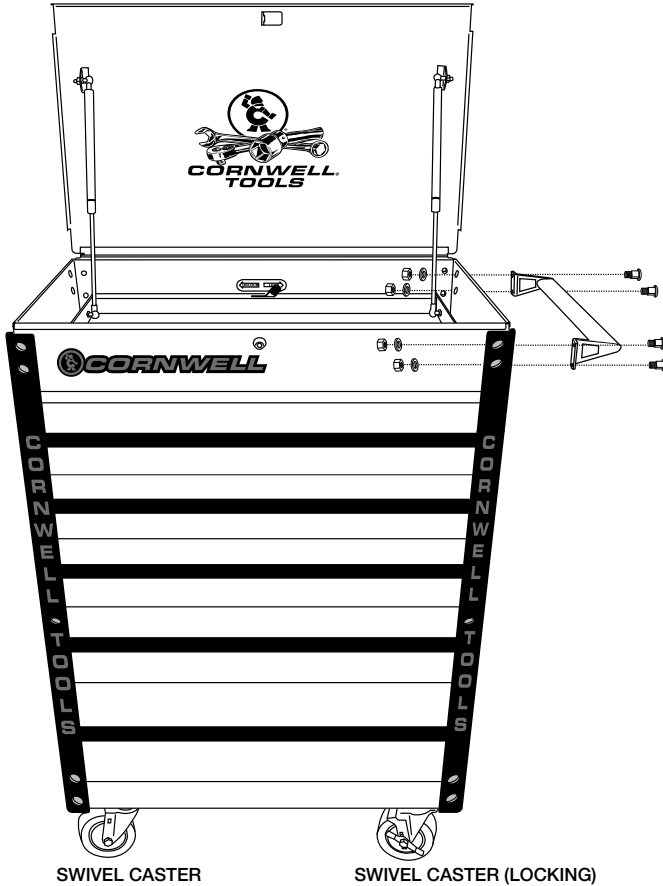




CTBMM500BLBLE

5 Drawer Pro Series Service Cart w/ Power Strip - Blue w/ Blue Drawer Pulls

ASSEMBLY INSTRUCTIONS



Mount push handle (Part #5) to the same side of the cart as the locking casters using the four stove bolts, washers, and nuts provided.

Using 13mm socket completely tighten all nuts.

⚠ WARNING



- Read and follow all instructions in User's Manual.
- Do not load carts beyond rated capacity:
Maximum Total Net Load 700 Lbs.
Top 3 Drawers.....75 Lbs. each
Bottom 2 Drawers.....150 Lbs. each

PLEASE NOTE: Loading cart beyond rated capacity may cause structural damage to the cart as well as personal and/or property damage. Please educate your customers to the "dangers of overloading".

- Lock lid and drawers before moving.
- Apply brake on locking casters anytime cart is in place.
- Do not pull cart. Push from handle on end to move.
- Units can tip or fall causing damage or personal injury.
- Cart is designed to roll easily on flat surfaces and should not be used on uneven or inclined surfaces.
- Do not open more than one loaded drawer at a time.
- Do not stand on or step in drawers.
- Keep children away from unit.
- Wear gloves when lifting edges.
- Before connecting to a power supply, always check to make sure the power supply corresponds to the voltage required on the product.
- Fully insert plug to reduce the risk of electric shock.
- Always unplug when not in use.
- Disconnect power before installing or servicing.
- Do not try to plug in unit or product when hands are wet or damp, or if standing on a wet or damp surface or in water.
- Never attempt to pick up unit or plugged in product that should fall in standing water.
- This unit is not waterproof and is intended for general use indoors.
- Do not use in potentially dangerous locations, such as flammable or explosive atmospheres.
- Keep cord away from heat, oil, sharp edges or moving parts.
- Handling the brass parts of this product will expose you to lead, a chemical known to the State of California to cause birth defects and other reproductive harm. *Wash hands after handling.*
- This product may contain one or more chemicals known to the State of California to cause cancer and birth defects or other reproductive harm. *Wash hands thoroughly after handling.*
- Failure to heed these warnings may result in personal injury and/or property damage.



CTBMM500BLBLE

5 Drawer Pro Series Service Cart w/ Power Strip - Blue w/ Blue Drawer Pulls

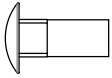
HARDWARE SPECIFICATIONS



1 x 4 pcs.
Flat washer



2 x 4 pcs.
Nylon nut



3 x 4 pcs.
M8 bolt (6mm-19mm)

TROUBLESHOOTING

Troubleshooting Points for the CTBMM500 Series:

Problem: Drawers appear not to fit, do not slide in accurately and bump the cart sides.

Solution: The roller bearing slides must be fully engaged into the mounting slots on all drawers. They potentially could fall out of position during shipment. Check the side of the cart to determine which slide is out of position.

Remove the drawer that is out of position. The drawer is removed by the two clips on the actual roller bearing slide.

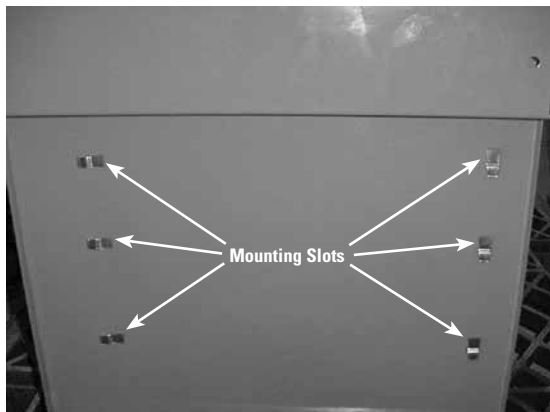
Simply push the roller bearing slide back down into position.

Insert the drawer back onto the roller bearing slides.

Problem: Back Lock/Unlock Switch does not engage the drawer.

Solution: The inside Lock/Unlock slide potentially could fall out of its groove during shipment. Unscrew the four screws that are holding the Lock/Unlock slide in place.

Once the screws are removed, simply place the latch back onto the slide and tighten the four screws back down.



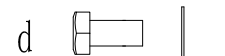
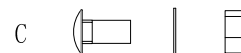
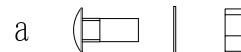
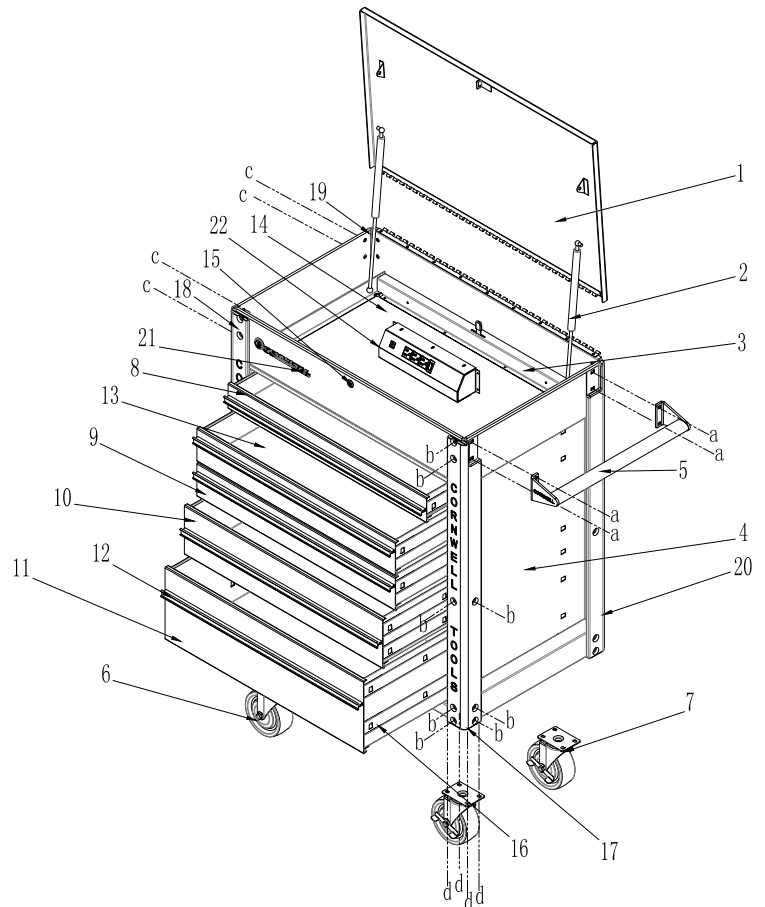


CTBMM500BLBLE

5 Drawer Pro Series Service Cart w/ Power Strip - Blue w/ Blue Drawer Pulls

PARTS LIST

Item #	Part #	Description	QTY.
1		Lid	1
2	RSGP	Gas piston / each	2
3	RSLMC500BKN	Locking mechanism (excl lock w/ keys) (Black)	1
	RSLMC500BLN	Locking mechanism (excl lock w/ keys) (Blue)	
	RSLMC500BDN	Locking mechanism (excl lock w/ keys) (Red)	
	RSLMC500RGN	Locking mechanism (excl lock w/ keys) (Orange)	
	RSLMC500NGN	Locking mechanism (excl lock w/ keys) (Neon Green)	
4		Cart frame	1
5	CTBMMHDK	Push handle and bracket kit	1
6	CTBMM100FC	5" fixed caster (non-locking)	2
7	RSSWLCS	5" swivel caster (locking)	2
8	CTBMM5003DBK	3" drawer (Black)	1
	CTBMM5003DBL	3" drawer (Blue)	
	CTBMM5003DRD	3" drawer (Red)	
	CTBMM5003DRG	3" drawer (Orange)	
	CTBMM5003DNG	3" drawer (Neon Green)	
9	CTBMM5004DBK	4" drawer (Black)	2
	CTBMM5004DBL	4" drawer (Blue)	
	CTBMM5004DRD	4" drawer (Red)	
	CTBMM5004DRG	4" drawer (Orange)	
	CTBMM5004DNG	4" drawer (Neon Green)	
10	CTBMM5006DBK	6" drawer (Black)	1
	CTBMM5006DBL	6" drawer (Blue)	
	CTBMM5006DRD	6" drawer (Red)	
	CTBMM5006DRG	6" drawer (Orange)	
	CTBMM5006DNG	6" drawer (Neon Green)	
11	CTBMM5009DBK	9" drawer (Black)	1
	CTBMM5009DBL	9" drawer (Blue)	
	CTBMM5009DRD	9" drawer (Red)	
	CTBMM5009DRG	9" drawer (Orange)	
	CTBMM5009DNG	9" drawer (Neon Green)	
12	RSMM500DHL	Drawer handle w/ hardware (Blue)	5
13-14	RSMM500LK	6 Pack of EVA liners	1 set
15	RSLKN	Lock with keys	1
16	RSRBS	Roller bearing slides (pair)	7
	RSRBSDET8PK	Ball Bearing Slide Detents (Package of 8)	1
17	RSMM700BPRF	Right front bumper	1
18	RSMM700BPLF	Left front bumper	1
19	RSMM700BPLR	Left rear bumper	1
20	RSMM700BPRR	Right rear bumper	1
21	RSMM100CLP	Logo Plate	1
22	RS50022	Power strip w/ cord	1
a	RSMM700BK2	Hardware kit for push handle (Including 4 each of Bolts 6mm-19mm, Flat washers, Nylon nuts)	1 set
b	RSMM500BF	Bumper fastener	32
c	RSMM700BK4	Hardware kit for the opposite side of push handle (Including 4 each of bolts 3-17mm, Flat washers, Nylon nuts)	1 set
d	RSMM700BK3	Hardware kit for caster (Including 16 Hex bolt M8x16, 16 flat washers, 16 Spring washer)	1 set



ALSO AVAILABLE:

RSMM100DHP - End cap for drawer handle (2 pack)

RS50022PC - Power cord for power strip