



# CSEUH2TA

## 2 Ton Tripod Stand

### OPERATING MANUAL • WARNING INFORMATION • PARTS LIST

Manufactured to comply with the  
ASME PASE-2019 Safety Standard



### SPECIFICATIONS

Maximum Capacity . . . . .	2 Ton
Maximum Height . . . . .	82.3"
Minimum Height . . . . .	55.5"
Base Size (triangle). . . . .	24"
Product Weight. . . . .	35.27 Lbs.
Shipping Weight. . . . .	37.4 Lbs.

Copyright © Professional Tool Products, 2020  
All rights reserved



## WARNING INFORMATION



This is the safety alert symbol. It is used to alert you to potential personal injury hazards. Obey all safety messages that follow this symbol to avoid possible injury or death.

### **WARNING**

**WARNING:** Indicates a hazardous situation which, if not avoided, could result in death or serious injury.



### **IMPORTANT: READ THESE INSTRUCTIONS BEFORE OPERATING**

**BEFORE USING THIS DEVICE, READ THIS MANUAL COMPLETELY AND THOROUGHLY, UNDERSTAND ITS OPERATING PROCEDURES, SAFETY WARNINGS AND MAINTENANCE REQUIREMENTS.**

It is the responsibility of the owner to make sure all personnel read this manual prior to using these stands. It is also the responsibility of the stand owner to keep this manual intact and in a convenient location for all to see and read. If the manual or product labels are lost or not legible, contact Cornwell Tools for replacements. If the operator is not fluent in English, the product and safety instructions shall be read to and discussed with the operator in the operator's native language by the purchaser/owner or his designee, making sure that the operator comprehends its contents.

## THE NATURE OF HAZARDOUS SITUATIONS

### **WARNING**

The use of portable automotive lifting and support devices is subject to certain hazards that cannot be prevented by mechanical means, but only by the exercise of intelligence, care, and common sense. It is therefore essential to have owners and personnel involved in the use and operation of the equipment who are careful, competent, trained, and qualified in the safe operation of the equipment and its proper use. Examples of hazards are dropping, tipping or slipping of loads caused primarily by improperly secured loads, overloading, off-centered loads, use on other than hard level surfaces, and using equipment for a purpose for which it was not designed.

## METHODS TO AVOID HAZARDOUS SITUATIONS

### **WARNING**



- Read instructions before using.
- User and bystanders must wear eye protection that meets ANSI Z87.1 and OSHA standards.
- This stand is intended to assist in stabilizing a vehicle that is supported by an automotive lift.
- Inspect the stand before each use. Do not use if damaged, altered, modified, in poor condition or has loose or missing hardware or components. Take corrective action before using the stand.
- Center load on saddle. Do not use ends of saddle to support load.
- Use stands in pairs to stabilize the vehicle before starting repairs.
- Be sure vehicle, vehicle components and stand are stable before performing any work.
- Do not exceed rated capacity. Do not shock load.
- Use only on a hard level surface capable of supporting the load.
- Do not use (or modify) this product for any other purpose than that for which it was designed without consulting the manufacturer's authorized representative.
- Failure to heed these warnings may result in personal injury, property damage, or both.



**WARNING:** This product can expose you to chemicals including nickel, which is known to the State of California to cause cancer and birth defects or other reproductive harm. For more information go to [www.P65Warnings.ca.gov](http://www.P65Warnings.ca.gov).

## CONSEQUENCES OF NOT AVOIDING HAZARDOUS SITUATIONS

### **WARNING**

Failure to read this manual completely and thoroughly, failure to understand its OPERATING INSTRUCTIONS, SAFETY WARNINGS, MAINTENANCE INSTRUCTIONS and comply with them, and failure to comply with the METHODS TO AVOID HAZARDOUS SITUATIONS could cause accidents resulting in serious or fatal personal injury and/or property damage.

## SETUP

1. Attach legs (#20) to top plate (#13) with hardware (#14, #9 and #15) as shown on the exploded view drawing on page 5.  
Do not tighten hardware.
2. Attach small braces (#17) to mid plate (#16) with hardware (#2, #9 and #15) as shown on the exploded view drawing on page 5.  
Do not tighten hardware.



3. Attach opposite ends of small braces (#17) to legs (#20) with hardware (#2, #9 and #15) as shown on the exploded view drawing on page 5. Do not tighten hardware.
4. Attach mid braces (#18) to the legs (#20) with hardware (#2) and (#9) as shown on the exploded view drawing on page 5. Do not tighten hardware.
5. Attach long braces (#19) to the legs (#20) with hardware (#2 and #9) as shown on the exploded view drawing on page 5. Do not tighten hardware.
6. Tighten hardware mentioned in steps 1 through 5 starting with step 1 first.
7. Install the spring pin (#7) in the hole located at the bottom of the screw rod (#6). Feed the screw rod (#6) up through the post (#8) as shown on the exploded view drawing on page 5.
8. Place the bearing assembly (#5) onto the threads of the screw rod (#6).
9. Thread the handle (#4) onto the screw rod (#6).
10. Install the saddle (#1) on top of the screw rod (#6) and secure them together with the screw (#2).
11. Place the post (#8) down through the top of the top plate (#13) and then through the mid plate (#16). Raise the post to the desired height and secure it to the top plate with the detent pin (#12) and pin clip (#11).

## OPERATION



This is the safety alert symbol used for the **OPERATING INSTRUCTIONS** section of this manual to alert you to potential personal injury hazards. Obey all instructions to avoid possible injury or death. **IMPORTANT:** Before attempting to raise any vehicle, check vehicle service manual for recommended lifting surfaces.

1. Make sure the vehicle is properly supported, stable and at the required work height before positioning the stand(s) under the vehicle component to be supported.
2. Consult the lift and vehicle manufacturer for the proper positioning of the under hoist stand.
3. Once the stand(s) has been positioned properly under the vehicle, hold the stand's saddle in place with one hand while turning the spin handle in a clockwise direction with the other hand. Remove the one hand from the stand's saddle when it comes close to making contact with the vehicle.
4. Continue turning the stand's spin handle in a clockwise direction until it applies light pressure against the component. This pressure should not exceed what is required to support the vehicle. Excessive pressure might cause the vehicle or its component to become unstable.
5. Before removing the stand from the vehicle, make sure the vehicle is still properly positioned on the lift. Removal of the stand can be accomplished by turning the spin handle in a counterclockwise direction until the stand's saddle is clear of the vehicle.

## PREVENTATIVE MAINTENANCE



This is the safety alert symbol used for the **PREVENTATIVE MAINTENANCE** section of this manual to alert you to potential personal injury hazards. Obey all instructions to avoid possible injury or death.

1. Always store the stand in a well protected area where it will not be exposed to inclement weather, corrosive vapors, abrasive dust, or any other harmful elements. The stands must be cleaned of water, snow, sand, grit, oil, grease or other foreign matter before using.
2. Use a general purpose grease to lubricate the wormshaft and foot pedal linkage if so equipped.
3. Every stand owner is responsible for keeping the stand labels clean and readable. Use a mild soap solution to wash external surfaces of the stand. Contact Cornwell Tools for a replacement label if your stand's label is not readable.
4. Inspect the stand before each use. Do not use the stand if any component is cracked, broken or bent. Do not use the stand if it has loose or missing hardware or components, or is modified in any way. Take corrective action before using the stand again. Premature wearing or damage to components caused by loose or missing hardware is not eligible for warranty consideration.

## OWNER/USER RESPONSIBILITY

The owner and/or user must have an understanding of the manufacturer's operating instructions and warnings before using this jack. Personnel involved in the use and operation of equipment shall be careful, competent, trained, and qualified in the safe operation of the equipment and its proper use when servicing motor vehicles and their components. Warning information should be emphasized and understood. If the operator is not fluent in English, the manufacturer's instructions and warning shall be read to and discussed with the operator in the operator's native language by the purchaser/owner, making sure that the operator comprehends its contents. Owner and/or user must study and maintain for future reference the manufacturers' instructions. Owner and/or user is responsible for keeping all warning labels and instruction manuals legible and intact. Replacement labels and literature are available from the manufacturer.



---

## **WARRANTY COVERAGE**

Cornwell Quality Tools Company ("Cornwell") warrants against defects on this product for a period of TWO (2) YEARS from the date of original retail purchase. Subject to the conditions and limitations set forth below, Cornwell will, at its option, either repair or replace any part of the product(s) that proves defective by reason of improper workmanship or materials.

This warranty does not cover any damage to this product that results from accident, abuse, misuse, natural or personal disaster, or any unauthorized disassembly, repair, or modification. Repairs, disassembly and modification are only authorized to be made by Cornwell or a warranty service center approved by Cornwell.

## **WARRANTY SERVICE**

To obtain warranty service, contact your Cornwell dealer.

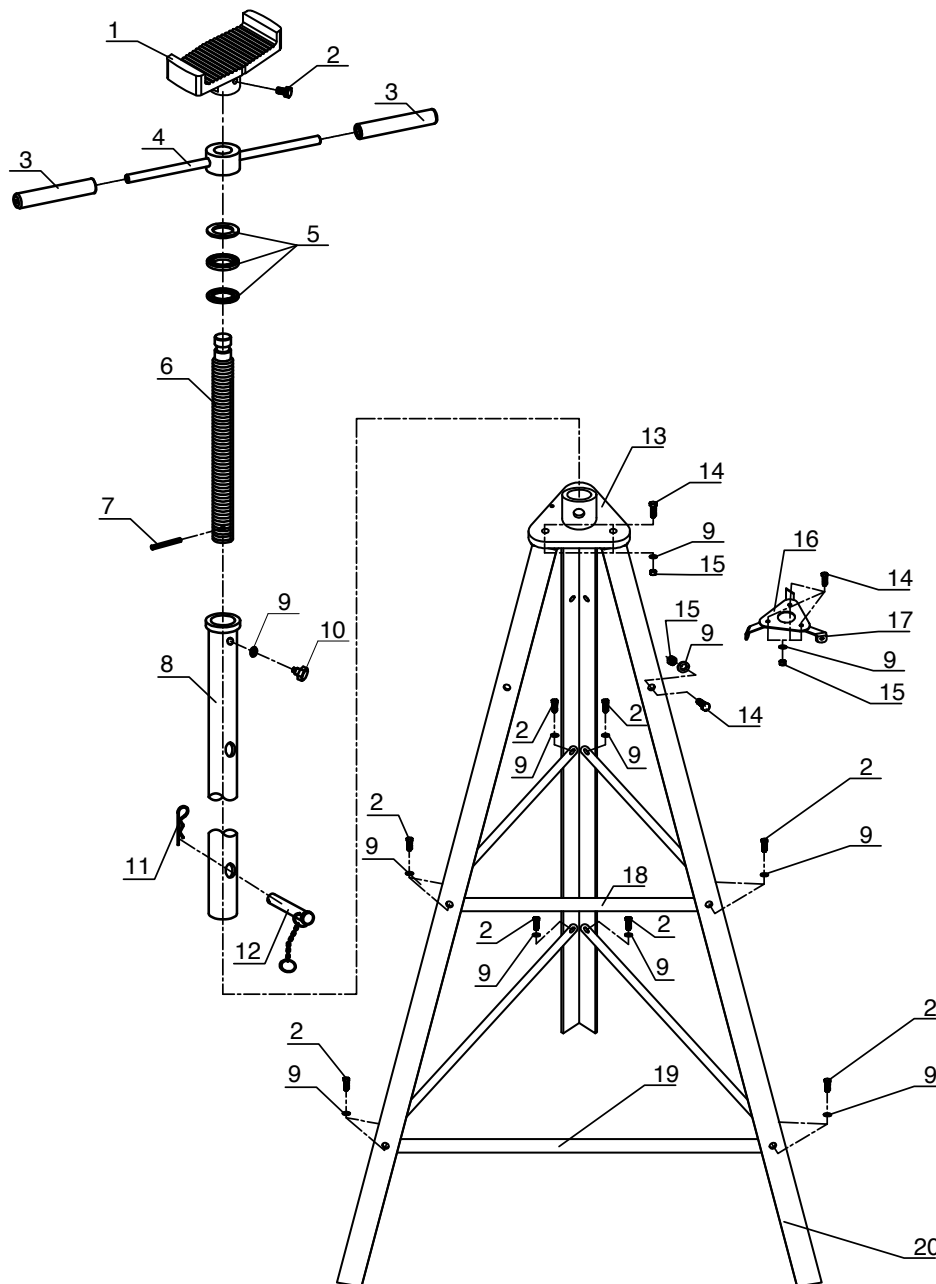
## **EXCLUSIONS AND LIMITATIONS**

THIS WARRANTY AND THE REMEDIES SET FORTH ABOVE ARE EXCLUSIVE AND IN LIEU OF ALL OTHER WARRANTIES, REMEDIES AND CONDITIONS, WHETHER ORAL OR WRITTEN, EXPRESS OR IMPLIED. CORNWELL SPECIFICALLY DISCLAIMS ANY AND ALL IMPLIED WARRANTIES, INCLUDING, TO THE EXTENT PERMITTED BY APPLICABLE LAW, ANY WARRANTIES OF MERCHANTABILITY AND FITNESS FOR A PARTICULAR PURPOSE. IF CORNWELL CANNOT LAWFULLY DISCLAIM IMPLIED WARRANTIES UNDER THIS LIMITED WARRANTY, ALL SUCH IMPLIED WARRANTIES ARE LIMITED IN DURATION TO THE DURATION OF THIS WARRANTY. IN NO EVENT SHALL CORNWELL BE LIABLE TO THE PURCHASER OR TO THE USER OF A CORNWELL PRODUCT FOR ANY SPECIAL, INCIDENTAL OR CONSEQUENTIAL DAMAGES BASED UPON BREACH OF WARRANTY, BREACH OF CONTRACT, NEGLIGENCE, TORT, OR ANY OTHER LEGAL THEORY. SUCH DAMAGES INCLUDE, WITHOUT LIMITATION, EXPENSES, LOST REVENUES, LOST SAVINGS, LOST PROFITS, OR ANY OTHER INCIDENTAL OR CONSEQUENTIAL DAMAGES ARISING FROM THE PURCHASE, USE OR INABILITY TO USE THE CORNWELL PRODUCT.

Some states do not allow the exclusion or limitation of incidental or consequential damages or exclusions or limitation on the duration of implied warranties or conditions, so the above limitations or exclusions may not apply to you. This warranty gives you specific legal rights, and you may also have other rights that vary by state.

Repair kits and replacement parts are available for many Cornwell products, regardless of whether or not the product is still covered by a warranty plan.

## PARTS LIST



Item No.	Part No.	Description	Qty.
1	RS150001A	Serrated Saddle - Black	1
2	*	Bolt (M8x16)	13
3	RS200205	Hand Grip - Black	2
4	RS200206	Screw Handle - Black	1
5	RS200604	Bearing (6106)	1
6		Screw rod with groove	1
7		Spring Pin (M5X35)	1
8		Post	1
9	*	Washer (8)	22
10	*	Bolt (M8X10.5)	1
11	*	Pin Clip	1

Item No.	Part No.	Description	Qty.
12	*	Pin roll (12x80)	1
13		Top plate	1
14	*	Bolt (M8X25)	9
15	*	Nut (M8)	9
16		Mid plate	1
17		Small brace	3
18		Mid brace	3
19		Long brace	3
20		Leg	3
not shown	RSCSEUH2TAPLK	Product Label Kit	1

Only items identified by part number are available for purchase.  
\* Available in Hardware Kit, RS25016HK