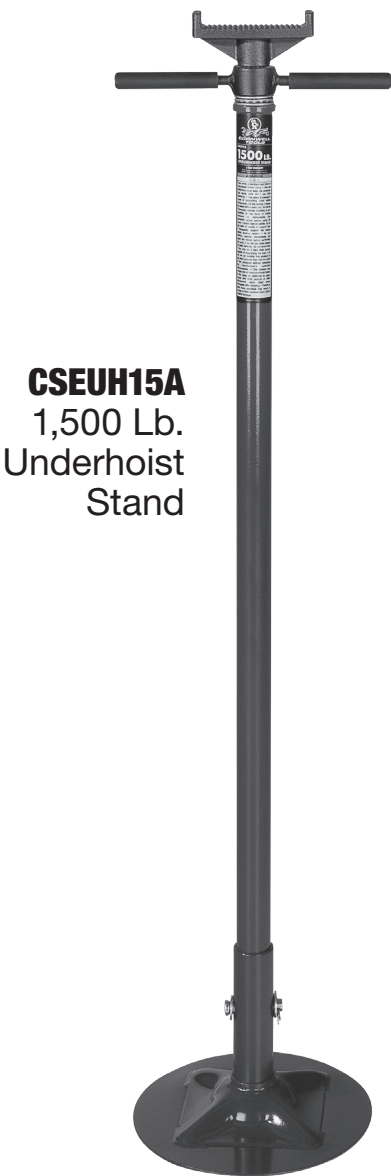


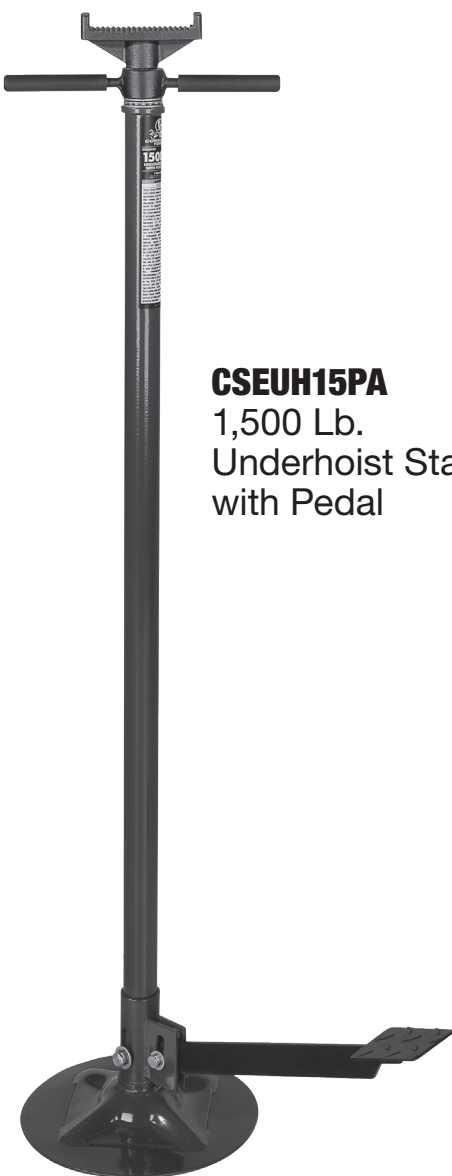


**CSEUH15A AND CSEUH15PA**  
1,500 lb. Underhoist Stand

**OPERATING MANUAL • WARNING INFORMATION • PARTS LIST**      Manufactured to comply with the ASME PASE-2019 Safety Standard



**CSEUH15A**  
1,500 Lb.  
Underhoist  
Stand



**CSEUH15PA**  
1,500 Lb.  
Underhoist Stand  
with Pedal

**SPECIFICATIONS**

	<b>CSEUH15A</b>	<b>CSEUH15PA</b>
Maximum Capacity .....	1,500 Lb.	1,500 Lb.
Maximum Height.....	81.3"	81.3"
Minimum Height.....	53.94"	53.94"
Base Size .....	11.81" x 0.18"	11.81" x 0.18"
Net Weight .....	32 Lbs.	33.07 Lbs.
Shipping Weight.....	36.2 Lbs.	37.5 Lbs.



### WARNING INFORMATION



This is the safety alert symbol. It is used to alert you to potential personal injury hazards. Obey all safety messages that follow this symbol to avoid possible injury or death.

#### **WARNING**

**WARNING:** Indicates a hazardous situation which, if not avoided, could result in death or serious injury.



### IMPORTANT: READ THESE INSTRUCTIONS BEFORE OPERATING

BEFORE USING THIS DEVICE, READ THIS MANUAL COMPLETELY AND THOROUGHLY, UNDERSTAND ITS OPERATING PROCEDURES, SAFETY WARNINGS AND MAINTENANCE REQUIREMENTS.

It is the responsibility of the owner to make sure all personnel read this manual prior to using the device. It is also the responsibility of the device owner to keep this manual intact and in a convenient location for all to see and read. If the manual or product labels are lost or not legible, contact Cornwell for replacements. If the operator is not fluent in English, the product and safety instructions shall be read to and discussed with the operator in the operator's native language by the purchaser/owner or his designee, making sure that the operator comprehends its contents.

### THE NATURE OF HAZARDOUS SITUATIONS

#### **WARNING**

The use of portable automotive supporting devices are subject to certain hazards that cannot be prevented by mechanical means, but only by the exercise of intelligence, care, and common sense. It is therefore essential to have owners and personnel involved in the use and operation of the equipment who are careful, competent, trained, and qualified in the safe operation of the equipment and its proper use. Examples of hazards are dropping, tipping or slipping of loads caused primarily by improperly securing loads, overloading, off-centered loads, use on other than hard level surfaces, and using equipment for a purpose for which it was not designed.

### METHODS TO AVOID HAZARDOUS SITUATIONS

#### **WARNING**



- Read, study, understand and follow all instructions before operating this device.



- This stand is intended to assist in supporting under vehicle components, not the vehicle.



- User and bystanders must wear eye protection that meets ANSI Z87.1 and OSHA standards.

- Inspect the stand before each use. Do not use if damaged, altered, modified, in poor condition or has loose or missing hardware or components. Take corrective action before using the stand.



- Center load on saddle. Do not use ends of saddle to support load.

- Adequately support the vehicle before starting repairs.

- Be sure vehicle, vehicle components and stand are stable before performing any work.

- Do not use stand beyond its rated capacity. Do not shock load.

- Use only on a hard level surface capable of supporting the load.

- Do not use (or modify) this product for any other purpose than that for which it was designed without consulting the manufacturer's authorized representative.

- Failure to heed these warnings may result in serious or fatal personal injury and/or property damage.



**WARNING:** This product can expose you to chemicals including nickel, which is known to the State of California to cause cancer and birth defects or other reproductive harm. For more information go to [www.P65Warnings.ca.gov](http://www.P65Warnings.ca.gov).

### CONSEQUENCES OF NOT AVOIDING HAZARDOUS SITUATIONS

#### **WARNING**

Failure to read this manual completely and thoroughly, understand its OPERATING INSTRUCTIONS, SAFETY WARNINGS, MAINTENANCE INSTRUCTIONS and not comply with them, and neglecting the METHODS TO AVOID HAZARDOUS SITUATIONS could cause accidents resulting in serious or fatal personal injury and/or property damage.

**-Save these instructions-**



# CSEUH15A AND CSEUH15PA

1,500 lb. Underhoist Stand

## SETUP

Please refer to the exploded view drawing on page 5 in this manual in order to identify parts:

1. Screw the post support (#2) in the round base (#1).
2. Thread the large spin handle (#7) on the extension screw (#4).
3. Install the bearing assembly (#5, 6) in the receiver on top of the support tube (#3).
4. Insert the extension screw assembly (#4) through the bearing (#5) and into the support tube (#3) until the underside of the spin handle (#7) rests on the bearing assembly (#4).
5. Insert the M8 bolt (#11) into the hole located at the top of the support tube (#3). Align the extension screw (#4) so that the M8 bolt (#11) fits into the vertical groove on the extension screw (#4) and tighten with the M8 nut (#12).
6. The model CSEUH15PA includes a pedal (#18). Insert the other end of the pedal through the parallel flanges of the post support (#2); raise the pedal high enough so the clevis pin can be installed through the parallel flanges of the post support. Secure the clevis pin with the washers and cotter pin provided.

## OPERATION



This is the safety alert symbol used for the **OPERATING INSTRUCTIONS** section of this manual to alert you to potential personal injury hazards. Obey all instructions to avoid possible injury or death. **IMPORTANT:** Before attempting to raise any vehicle, check vehicle service manual for recommended lifting surfaces.

1. Make sure the vehicle is properly supported, stable and at the required work height before positioning the stand(s) under the vehicle component to be supported.
2. Consult the vehicle manufacturer for the proper handling of the component and use of underhoist stands.
3. Once the stand(s) has been positioned properly under the component, hold the stand's saddle in place with one hand while turning the spin handle in a clockwise direction with the other hand. Remove the one hand from the stand's saddle when it comes close to making contact with the component.
4. Continue turning the stand's spin handle in a clockwise direction until it applies pressure against the component. This pressure should not exceed what is required to support the component. Excessive pressure might cause the vehicle or its component to become unstable. Additional precaution should be taken when using a stand equipped with a foot pedal which can raise the stand's saddle another inch more in height and produce as much as 400 pounds of force when depressed.
5. Before removing the stand from the component, make sure the component is securely fastened to the vehicle or properly supported by another means. Removal of the stand can be accomplished by turning the spin handle in a counterclockwise direction until the stand's saddle is clear of the component.

## PREVENTATIVE MAINTENANCE



This is the safety alert symbol used for the **PREVENTATIVE MAINTENANCE** section of this manual to alert you to potential personal injury hazards. Obey all instructions to avoid possible injury or death.

1. Always store the stands in a well protected area where they will not be exposed to inclement weather, corrosive vapors, abrasive dust, or any other harmful elements. The stands must be cleaned of water, snow, sand, grit, oil, grease or other foreign matter before using.
2. Use a general purpose grease to lubricate the extension screw and foot pedal linkage if so equipped.
3. Every stand owner is responsible for keeping the stand labels clean and readable. Use a mild soap solution to wash external surfaces of the stand. Contact Cornwell Tools for a replacement label if your stand's label is not readable.
4. Inspect the stand before each use. Do not use the stand if any component is cracked, broken or bent. Do not use the stand if it has loose or missing hardware or components, or is modified in any way. Take corrective action before using the stand again. Premature wearing or damage to components caused by loose or missing hardware is not eligible for warranty consideration.

**-Save these instructions-**



## **CSEUH15A AND CSEUH15PA**

### **1,500 lb. Underhoist Stand**

---

## **WARRANTY COVERAGE**

Cornwell Quality Tools Company ("Cornwell") warrants against defects on this product for a period of TWO (2) YEARS from the date of original retail purchase. Subject to the conditions and limitations set forth below, Cornwell will, at its option, either repair or replace any part of the product(s) that proves defective by reason of improper workmanship or materials.

This warranty does not cover any damage to this product that results from accident, abuse, misuse, natural or personal disaster, or any unauthorized disassembly, repair, or modification. Repairs, disassembly and modification are only authorized to be made by Cornwell or a warranty service center approved by Cornwell.

## **WARRANTY SERVICE**

To obtain warranty service, contact your Cornwell dealer.

## **EXCLUSIONS AND LIMITATIONS**

THIS WARRANTY AND THE REMEDIES SET FORTH ABOVE ARE EXCLUSIVE AND IN LIEU OF ALL OTHER WARRANTIES, REMEDIES AND CONDITIONS, WHETHER ORAL OR WRITTEN, EXPRESS OR IMPLIED. CORNWELL SPECIFICALLY DISCLAIMS ANY AND ALL IMPLIED WARRANTIES, INCLUDING, TO THE EXTENT PERMITTED BY APPLICABLE LAW, ANY WARRANTIES OF MERCHANTABILITY AND FITNESS FOR A PARTICULAR PURPOSE. IF CORNWELL CANNOT LAWFULLY DISCLAIM IMPLIED WARRANTIES UNDER THIS LIMITED WARRANTY, ALL SUCH IMPLIED WARRANTIES ARE LIMITED IN DURATION TO THE DURATION OF THIS WARRANTY. IN NO EVENT SHALL CORNWELL BE LIABLE TO THE PURCHASER OR TO THE USER OF A CORNWELL PRODUCT FOR ANY SPECIAL, INCIDENTAL OR CONSEQUENTIAL DAMAGES BASED UPON BREACH OF WARRANTY, BREACH OF CONTRACT, NEGLIGENCE, TORT, OR ANY OTHER LEGAL THEORY. SUCH DAMAGES INCLUDE, WITHOUT LIMITATION, EXPENSES, LOST REVENUES, LOST SAVINGS, LOST PROFITS, OR ANY OTHER INCIDENTAL OR CONSEQUENTIAL DAMAGES ARISING FROM THE PURCHASE, USE OR INABILITY TO USE THE CORNWELL PRODUCT.

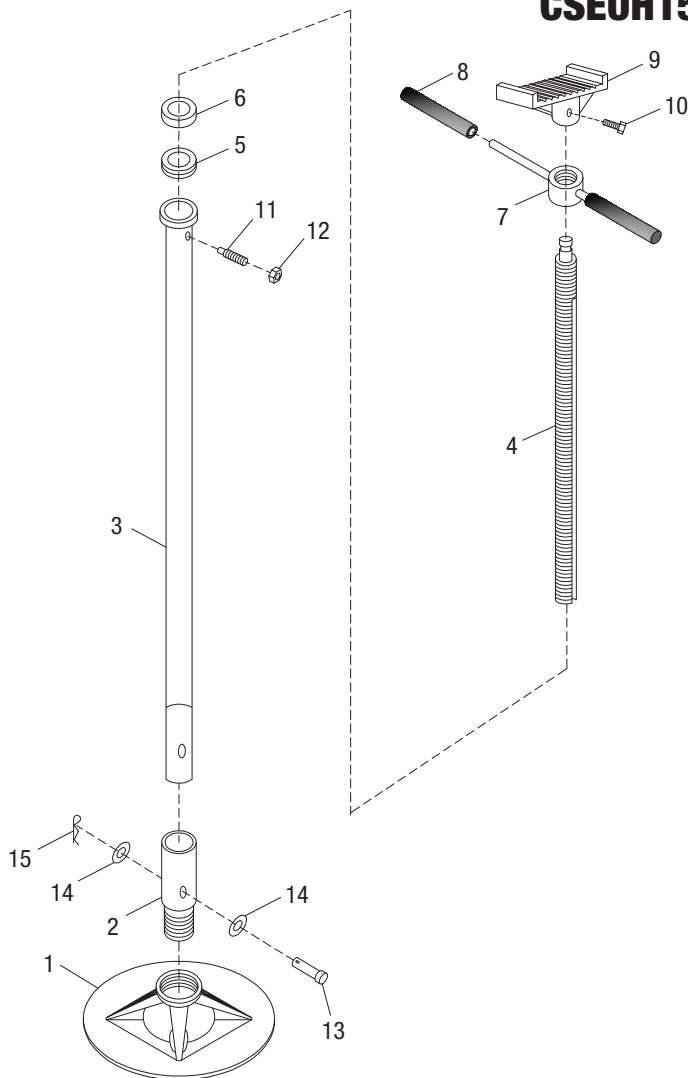
Some states do not allow the exclusion or limitation of incidental or consequential damages or exclusions or limitation on the duration of implied warranties or conditions, so the above limitations or exclusions may not apply to you. This warranty gives you specific legal rights, and you may also have other rights that vary by state.

Repair kits and replacement parts are available for many Cornwell products, regardless of whether or not the product is still covered by a warranty plan.

**-Save these instructions-**

## PARTS LIST

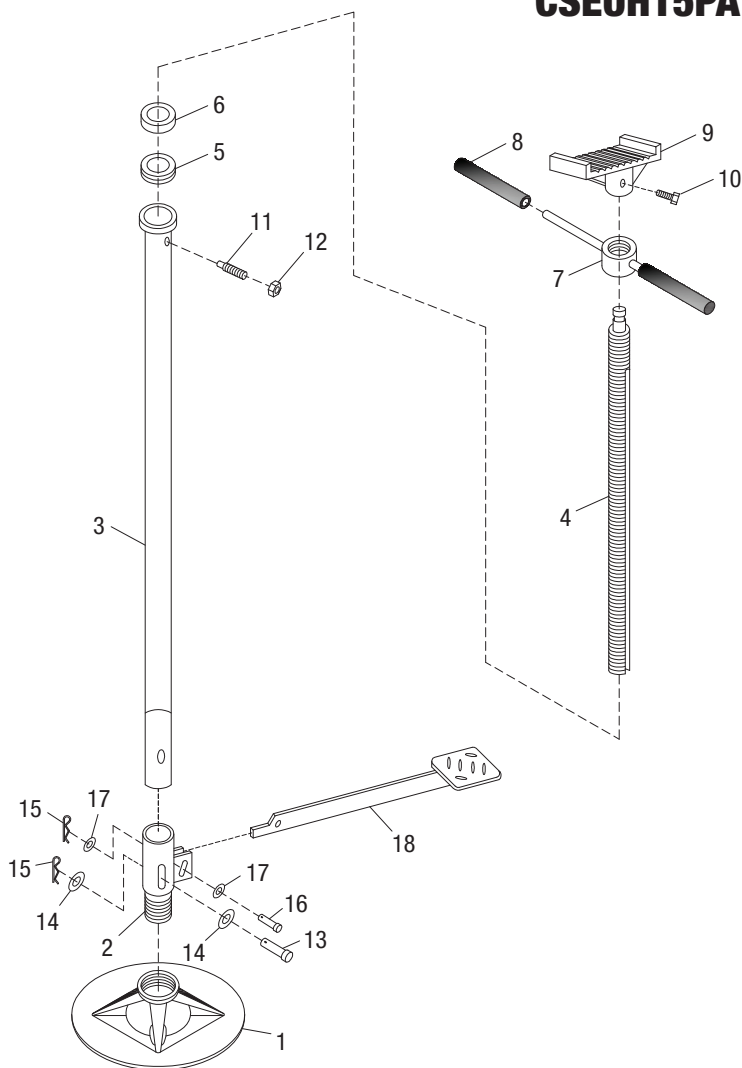
### CSEUH15A



Item No.	Part No.	Description	Qty.
1	RS150007A	Base - Blue	1
2	*	Post Support - Blue	1
3	*	Post - Blue	1
4	*	Screw Rod	1
5	*	Bearing (8106)	1
6	*	Dust Cover	1
7	*	T-Handle	1
8	*	Handle Grip	2
9	*	Saddle	1
10	*	Bolt (M8x16)	1
11	RS200604	Bolt (M8x20)	1
12	RS200605	Nut (M8)	1
13	RS200606	Pin Roll (16x65)	1
14	*	Flat Washer (16)	2
15	RS150001A	Pin Clip	1
	RSCSEUH15APLK	Product Label Kit (not shown)	1

Only items identified by part number are available for purchase.

### CSEUH15PA



Item No.	Part No.	Description	Qty.
1	RS150007A	Base - Blue	1
2	*	Post Support - Blue	1
3	*	Post - Blue	1
4	*	Screw Rod	1
5	*	Bearing (8106)	1
6	*	Dust Cover	1
7	RS681004BLA	T-Handle	1
8	RS150010A	Handle Grip	2
9	*	Saddle	1
10	*	Bolt (M8x16)	1
11	*	Bolt (M8x20)	1
12	*	Nut (M8)	1
13	*	Pin Roll (16x65)	1
14	RS200604	Flat Washer (16)	2
15	RS200205	Pin Clip	1
16	RS200206	Pin Roll (12x35)	1
17	*	Flat Washer (12)	2
18	RS150010A	Foot Pedal	1
	RSCSEUH15APLK	Product Label Kit (not shown)	1