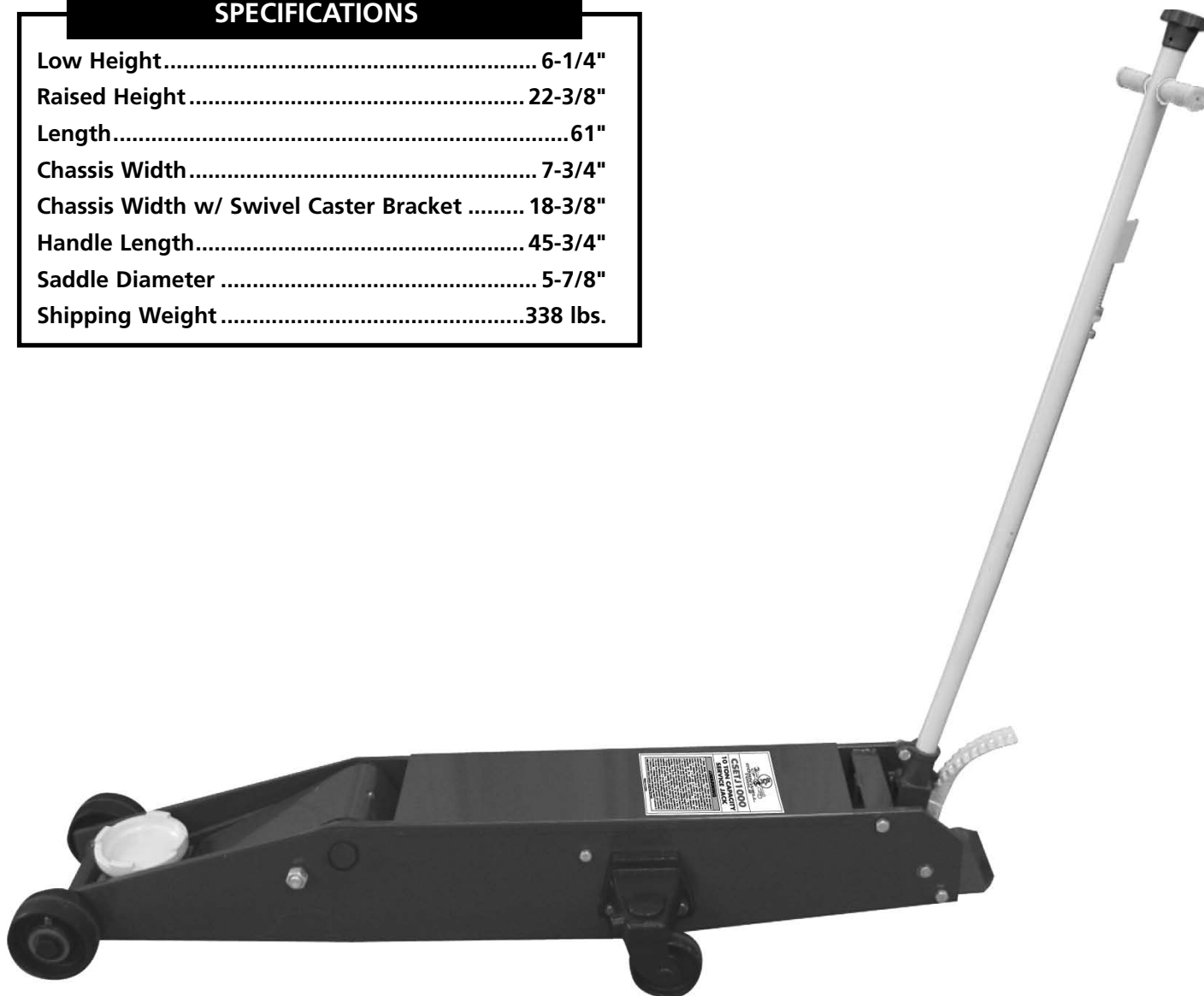


- *Operating Manual • Warning Information*
- *Parts List*



SPECIFICATIONS

Low Height.....	6-1/4"
Raised Height.....	22-3/8"
Length.....	61"
Chassis Width.....	7-3/4"
Chassis Width w/ Swivel Caster Bracket	18-3/8"
Handle Length.....	45-3/4"
Saddle Diameter	5-7/8"
Shipping Weight.....	338 lbs.



CSETJ1000 **10 Ton** **Service Jack**

Copyright © Professional Tool Products, 2010
All rights reserved

WARNING INFORMATION



This is the safety alert symbol. It is used to alert you to potential personal injury hazards. Obey all safety messages that follow this symbol to avoid possible injury or death.



WARNING: Indicates a hazardous situation which, if not avoided, could result in death or serious injury.



IMPORTANT: READ THESE INSTRUCTIONS BEFORE OPERATING

BEFORE USING THIS DEVICE, READ THIS MANUAL COMPLETELY AND THOROUGHLY, UNDERSTAND ITS OPERATING PROCEDURES, SAFETY WARNINGS AND MAINTENANCE REQUIREMENTS.

It is the responsibility of the owner to make sure all personnel read this manual prior to using the device. It is also the responsibility of the device owner to keep this manual intact and in a convenient location for all to see and read. If the manual or product labels are lost or not legible, contact Cornwell for replacements. If the operator is not fluent in English, the product and safety instructions shall be read to and discussed with the operator in the operator's native language by the purchaser/owner or his designee, making sure that the operator comprehends its contents.

THE NATURE OF HAZARDOUS SITUATIONS



The use of portable automotive lifting devices is subject to certain hazards that cannot be prevented by mechanical means, but only by the exercise of intelligence, care, and common sense. It is therefore essential to have owners and personnel involved in the use and operation of the equipment who are careful, competent, trained, and qualified in the safe operation of the equipment and its proper use. Examples of hazards are dropping, tipping or slipping of loads caused primarily by improperly securing loads, overloading, off-centered loads, use on other than hard level surfaces, and using equipment for a purpose for which it was not designed.

METHODS TO AVOID HAZARDOUS SITUATIONS



- Read, study, understand and follow all instructions before operating this device.
- Inspect the jack before each use. Do not use jack if damaged, altered, modified, in poor condition, leaking hydraulic fluid, or unstable due to loose or missing hardware or parts. Make corrections before using.
- Lift only on areas of the vehicle as specified by the vehicle manufacturer.
- Wear eye protection that meets ANSI Z87.1 and OSHA standards.
- Do not use jack beyond its rated capacity.
- This is a lifting device only. Immediately after lifting, support the vehicle with jack stands capable of sustaining the load before working on the vehicle.
- Use only on a hard level surface free from obstructions so the jack is free to reposition itself during lifting and lowering operations.
- Center load on saddle. Be sure setup is stable before working on vehicle.
- Do not move or dolly the vehicle while on the jack.
- Do not use saddle adapters or saddle extenders between the stock lifting saddle and the load.
- Do not use any adapters unless approved or supplied by Cornwell.
- Always lower the jack slowly and carefully.
- Failure to heed these markings may result in serious or fatal personal injury and/or property damage.

CONSEQUENCES OF NOT AVOIDING HAZARDOUS SITUATIONS



Failure to read this manual completely and thoroughly, failure to understand its OPERATING INSTRUCTIONS, SAFETY WARNINGS, MAINTENANCE INSTRUCTIONS and comply with them, and failure to comply with the METHODS TO AVOID HAZARDOUS SITUATIONS could cause accidents resulting in serious or fatal personal injury and/or property damage.

SETUP

PLEASE REFER TO THE EXPLODED VIEW DRAWING IN THIS MANUAL IN ORDER TO IDENTIFY PARTS.

1. In order to install the handle assembly item #54 in the handle socket item #32, first align the main handle tube with the largest hole in the handle socket and the lock pin rod with the smaller hole in the handle socket.
2. Make sure the lock pin rod is in the down/lock position before insertion in the handle socket. Once the main handle tube and lock pin rod are aligned with their respective holes in the handle socket, push the handle assembly in the handle socket so the end of the handle tube engages the release valve mechanism in the bottom of the handle socket and the lock pin rod engages one of the three (3) locking holes in the item #1 frame.
3. Now rotate the "T" handle portion of the handle assembly so it is perfectly aligned with the jack before tightening the item #36 bolt and item #34 nut. Tighten the bolt and nut so the handle can not rotate. Disengage the lock pin rod by pulling up on the lever and engaging the lever with the slot in top of the handle assembly. The handle assembly should be free to pump up and down.
4. In order to check for proper handle assembly alignment with the handle socket, see if the lock pin rod will engage with the three locking holes in the frame. Also, turn the release valve knob at the top of the handle assembly left and then right to see if the release valve u-joint in front and below the handle socket is rotating simultaneously with the turning of the knob.
5. Before Use: Air may become trapped in the hydraulic system.

PURGING AIR FROM THE HYDRAULIC SYSTEM:

- a. Rotate the knob at the top of the handle assembly in a clockwise direction until tight.
Now turn it in a counterclockwise direction two full turns.
- b. Activate the foot pump pedal item #33 about 15 times.
- c. Rotate the knob at the top of the handle assembly in a clockwise direction until tight.
- d. Activate the foot pump until the lift arm is raised to maximum height. You should experience a full pump stroke with each incremental pump of the pedal.
- e. If it does not feel you are getting full incremental pump stroke at anytime during the pumping operation, repeat steps "a" through "d" until all air is purged from the system.

OPERATING INSTRUCTIONS



This is the safety alert symbol used for the OPERATING INSTRUCTIONS section of this manual to alert you to potential personal injury hazards. Obey all instructions to avoid possible injury or death.

IMPORTANT: Before attempting to raise any vehicle, check vehicle service manual for recommended lifting surfaces.

OPERATION:

1. **To raise load:** Turn the knob at the top of the handle assembly in a clockwise direction until tight. Position the jack under the load. Proceed to pump the handle or the foot pedal in order to raise the lift arm to the load. As the saddle at the end of the lift arm gets close to the load, reposition the jack so the saddle will contact the load firmly and the load is centered on the saddle. Make sure the saddle is correctly positioned. Remember that foot pedal pump operation is only used to quickly raise the saddle to the load. The handle pump operation of the jack is used to lift the load. Raise the load to the desired work height. Place jack stands of appropriate capacity at the vehicle manufacturers's recommended support areas that provide stable support for the raised vehicle. **DO NOT CRAWL UNDER VEHICLE WHILE LIFTING VEHICLE OR REMOVING THE JACK STANDS!** Once jack stands are positioned, turn the knob at the top of the handle assembly **VERY SLOWLY**. Lower the load to rest on the jack stands. Inspect the relationship between the jack stands and load to make sure the setup is stable and safe. If the setup is not stable or safe, follow the preceding steps until corrected. **NOTE:** Once the hand pump operation has ceased, the handle assembly can be locked in any of the three (3) handle locking positions. Typically, the handle locking positions are used for moving the jack around the shop, keeping the handle out of the way or preventing the handle from being pumped.
2. **To lower load:** Follow the procedures mentioned in "To raise load" section of the OPERATING INSTRUCTIONS in order to raise the load off the jack stands. Once the load has cleared the jack stands, remove the stands from under the load and away from the work area. Turn the knob at the top of the jack's handle assembly very slowly in a counterclockwise direction until the load is completely lowered to the ground. Once the jack's lifting saddle has cleared the load, remove the jack from under the load.
CAUTION: Keep hands and feet away from the hinge mechanism of the jack.

PREVENTATIVE MAINTENANCE



This is the safety alert symbol used for the PREVENTATIVE MAINTENANCE section of this manual to alert you to potential personal injury hazards. Obey all instructions to avoid possible injury or death.

1. Always store the jack in a well protected area where it will not be exposed to inclement weather, corrosive vapors, abrasive dust, or any other harmful elements. The jack must be cleaned of water, snow, sand or grit before using.
2. The jack must be lubricated periodically in order to prevent premature wearing of parts. A general purpose grease must be applied to all zerk grease fittings, caster wheels, front axle wheels, elevator arm, handle base pivot bolts, release mechanism and all other bearing surfaces. **IMPORTANT:** Any jacks found to be defective due to worn parts resulting from inadequate or no lubrication are not eligible for warranty consideration.
3. It should not be necessary to refill or top off the reservoir with hydraulic fluid unless there is an external leak. An external leak requires immediate repair which must be performed in a dirt-free environment by an authorized service center.

CSETJ1000 - 10 TON SERVICE JACK

PREVENTATIVE MAINTENANCE (Cont.)

IMPORTANT: In order to prevent seal damage and jack failure, never use alcohol, hydraulic brake fluid or transmission oil in the jack. Any jack found to be defective as a result of foreign contaminants in the hydraulic system is not eligible for warranty consideration.

4. Every jack owner is responsible for keeping the jack labels clean and readable. Use a mild soap solution to wash external surfaces of the jack but not any moving hydraulic components.
5. Inspect the jack before each use. Do not use the jack if any component is cracked, broken, bent, shows sign of damage or leaks hydraulic fluid. Do not use the jack if it has loose or missing hardware or components, or is modified in any way. Take corrective action before using the jack again.
6. Any hydraulic repairs within the warranty period must be performed by an authorized service center.

TROUBLESHOOTING

PROBLEM	ACTION
1. Unit will not lift load.	Purge air from hydraulic system by following procedure under SETUP.
2. Unit will not sustain load or feels "spongy" under load.	Purge air from hydraulic system as above.
3. Unit will not lift to full height.	Purge air from hydraulic system as above.
4. Handle tends to raise up while the unit is under load.	Pump the handle rapidly several times to push oil past ball valves in power unit.
5. Unit still does not operate.	Contact an authorized service center from enclosed list.



WARRANTY COVERAGE

Cornwell Quality Tools Company ("Cornwell") warrants against defects the hydraulic pump on this product for a period of TWO (2) YEARS from the date of original retail purchase. Cornwell Quality Tools Company ("Cornwell") warrants against defects the balance of components on this product for a period of 90 days from the date of original retail purchase. Subject to the conditions and limitations set forth below, Cornwell will, at its option, either repair or replace any part of the product(s) that proves defective by reason of improper workmanship or materials.

This warranty does not cover any damage to this product that results from accident, abuse, misuse, natural or personal disaster, or any unauthorized disassembly, repair, or modification. Repairs, disassembly and modification are only authorized to be made by Cornwell or a warranty service center approved by Cornwell.

WARRANTY SERVICE

In order to have your service jack repaired, return the service jack to any Cornwell Authorized Hydraulic Warranty Center, freight prepaid. Please include a copy of your proof of purchase and a brief description of the problem. The service jack will be inspected and if any part or parts are found to be defective in material or workmanship, they will be repaired free of charge and the repaired service jack will be returned to you freight prepaid.

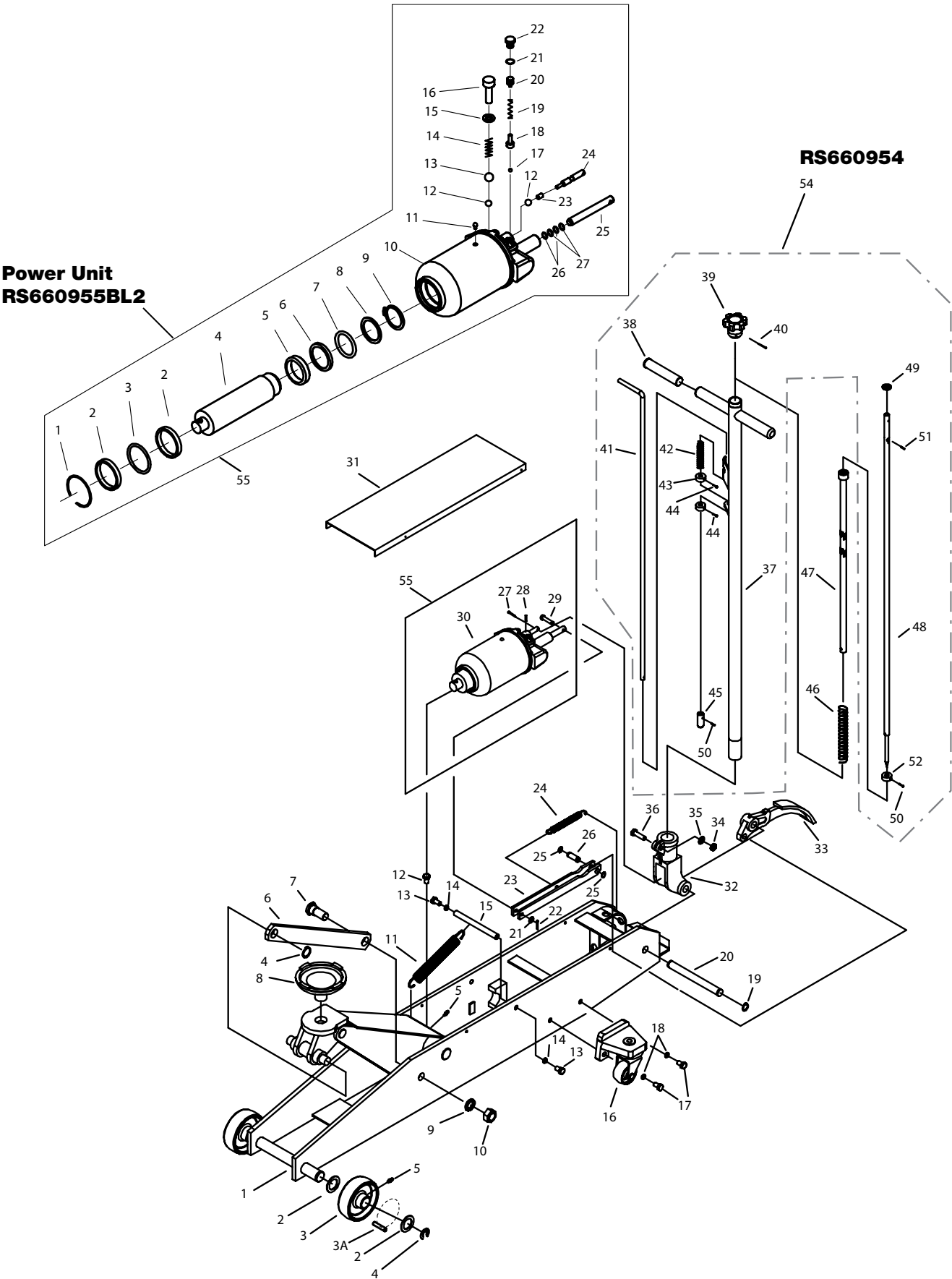
EXCLUSIONS AND LIMITATIONS

THIS WARRANTY AND THE REMEDIES SET FORTH ABOVE ARE EXCLUSIVE AND IN LIEU OF ALL OTHER WARRANTIES, REMEDIES AND CONDITIONS, WHETHER ORAL OR WRITTEN, EXPRESS OR IMPLIED. CORNWELL SPECIFICALLY DISCLAIMS ANY AND ALL IMPLIED WARRANTIES, INCLUDING, TO THE EXTENT PERMITTED BY APPLICABLE LAW, ANY WARRANTIES OF MERCHANTABILITY AND FITNESS FOR A PARTICULAR PURPOSE. IF CORNWELL CANNOT LAWFULLY DISCLAIM IMPLIED WARRANTIES UNDER THIS LIMITED WARRANTY, ALL SUCH IMPLIED WARRANTIES ARE LIMITED IN DURATION TO THE DURATION OF THIS WARRANTY. IN NO EVENT SHALL CORNWELL BE LIABLE TO THE PURCHASER OR TO THE USER OF A CORNWELL PRODUCT FOR ANY SPECIAL, INCIDENTAL OR CONSEQUENTIAL DAMAGES BASED UPON BREACH OF WARRANTY, BREACH OF CONTRACT, NEGLIGENCE, TORT, OR ANY OTHER LEGAL THEORY. SUCH DAMAGES INCLUDE, WITHOUT LIMITATION, EXPENSES, LOST REVENUES, LOST SAVINGS, LOST PROFITS, OR ANY OTHER INCIDENTAL OR CONSEQUENTIAL DAMAGES ARISING FROM THE PURCHASE, USE OR INABILITY TO USE THE CORNWELL PRODUCT.

Some states do not allow the exclusion or limitation of incidental or consequential damages or exclusions or limitation on the duration of implied warranties or conditions, so the above limitations or exclusions may not apply to you. This warranty gives you specific legal rights, and you may also have other rights that vary by state. Repair kits and replacement parts are available for many Cornwell products, regardless of whether or not the product is still covered by a warranty plan.

Cornwell Quality Tools Company
667 Seville Road • Wadsworth, OH 44281-1094

PARTS DRAWING



PARTS LIST

No.	Part No.	Description	Qty.	No.	Part No.	Description	Qty.
1		Frame	1	31		Cover	1
2		Washer	4	32	RS660932BL2	Handle socket	1
3	RS660903BK	Front wheel (incl. #2,3,3a,4,5)	2	33	RS550511WH	Pedal	1
3A	RS660903A	Roller bearing set	2	34		Nut	1
4		Snap ring	2	35		Washer	1
5		Grease fitting	5	36	RS550535	Bolt Kit (incl. #34,35,36)	1
6		Rod link	2	37		Handle	1
7		Bolt	2	38		Sleeve	2
8	RS660908	Saddle	1	39	RS660939	Knob	1
9		Lock washer	2	40		Pin	1
10		Nut	2	41		Control rod	1
11		Spring	1	42		Spring	1
12		Bolt	1	43		Washer	2
13		Bolt	2	44		Bolt	2
14		Lock washer	2	45		Pin	1
15		Shaft	1	46		Spring	1
16	RS660916BK	Rear caster wheel assembly	2	47	RS660947BL2	Universal joint assembly	1
17	RS660917	Caster bolt kit [(incl. #17 (2), 18 (2))]	4	48		Convey rod	1
18		Washer	4	49		Washer	1
19		Snap ring	2	50		Pin	2
20		Pin	1	51		Pin	1
21		Washer	1	52		Washer	1
22		Pin	1	53		Snap ring	2
23		Link assembly	1	54	RS660954	Handle assembly (incl. #37-45, 48-52)	1
24	RS660929	Spring	1	55	RS660955BL2	Complete hydraulic block assembly	1
25	RS550510	Snap ring	2		RSCSETJ1000LK	Complete Product Label Kit (not shown)	
26	RS550509	Pedal pin	1				
27		Pin	1				
28		Pin	1				
29		Pin	1				
30		Oil hydraulic assembly	1				

Only index numbers identified by part number are available separately.

POWER UNIT

No.	Part No.	Description	Qty.	No.	Part No.	Description	Qty.
1	*	Snap ring	1	14	*	Spring	1
2	*	Washer	2	15	*	Copper washer	1
3	*	O-ring	1	16		Bolt	1
4		Piston rod	1	17	*	Steel ball	1
5	*	Piston ring	1	18	*	Ball seat	1
6	*	Sealing washer	1	19	*	Spring	1
7	*	O-ring	1	20		Bolt	1
8	*	O-ring Retainer	1	21	*	Sealing washer	1
9	*	Snap ring	1	22		Bolt	1
10		Oil hydraulic assembly	1	23	*	Sealing washer	1
11	*	Oil filler plug	1	24		Release valve rod	1
12	*	Steel ball	2	25		Cylinder pump	1
13	*	Steel ball	1	26	*	O-ring	2
				27	*	Nylon gasket	2

* available in repair kit only, RS6609RK