

- *Operating Manual*
- *Warning Information*
- *Parts List*



! WARNING

DO NOT OVERLOAD. OVERLOADING IS INDICATED BY BOWING EXTENSION TUBES OR SLIPPING ATTACHMENTS AND CAN RESULT IN PERSONAL INJURY OR DAMAGE TO THE EQUIPMENT.

DO NOT USE EQUIPMENT IF DAMAGED, ALTERED OR IN POOR CONDITION. DO NOT CONNECT PUMP TO HYDRAULIC SYSTEM POWERED BY ANOTHER PUMP.

RATED CAPACITY OF PUMP AND EQUIPMENT MUST BE EQUAL. WHEN OFFSET ATTACHMENTS ARE USED, THE RATED CAPACITY IS ALWAYS REDUCED BY 50%. FOR EACH EXTENSION TUBE USED IN THE SETUP, THE OVERALL RATED CAPACITY IS REDUCED AN ADDITIONAL 50%. REFER TO THE OPERATING INSTRUCTIONS PROVIDED FOR TYPICAL SETUPS AND CORRESPONDING LOAD CAPACITIES.

PRIOR TO APPLYING A LOAD, INSURE THAT ALL ATTACHMENTS AND EXTENSION TUBES ARE FULLY ENGAGED.

INSURE LOAD IS CENTRALLY APPLIED TO ATTACHMENTS AND RAM SADDLE TO MINIMIZE AN OFF-CENTER LOAD CONDITION.

NEVER USE THIS EQUIPMENT WITHOUT A FORCE GAUGE TO VERIFY THE ACTUAL LOAD BEING APPLIED FOR VARIOUS TYPES OF SETUPS USED.

READ, STUDY, AND UNDERSTAND ALL WARNINGS AND OPERATING INSTRUCTIONS FURNISHED WITH THIS BODY REPAIR KIT BEFORE USE. FAILURE TO HEED THESE WARNINGS MAY RESULT IN LOSS OF LOAD, DAMAGE TO JACK AND/OR FAILURE RESULTING IN PERSONAL INJURY OR PROPERTY DAMAGE.

THIS OPERATING MANUAL CONTAINS IMPORTANT SAFETY INFORMATION.

READ CAREFULLY AND UNDERSTAND ALL INFORMATION BEFORE OPERATING THIS TOOL.

SAVE THIS MANUAL FOR FUTURE USE.

! WARNING

DO NOT OVERLOAD BEYOND RATED CAPACITY. USE ONLY ON HARD, LEVEL SURFACES CAPABLE OF SUSTAINING THE LOAD. DO NOT OPEN OIL FILLER PLUG UNLESS RAM IS FULLY RETRACTED. ALWAYS WEAR SAFETY GLASSES WHEN USING THIS EQUIPMENT. DO NOT USE AS A VEHICLE LIFTING DEVICE OR AS A VEHICLE SUPPORT. FAILURE TO HEED THESE WARNINGS MAY RESULT IN LOSS OF LOAD, DAMAGE TO JACK AND/OR FAILURE RESULTING IN PERSONAL INJURY OR PROPERTY DAMAGE.

CSE-PRK-2S

4 Ton

Portable Ram Kit w/2-Stage Pump

OWNER/USER RESPONSIBILITY

The owner and/or user must have an understanding of the manufacturer's operating instructions and warnings before using the portable ram kit. Personnel involved in the use and operation of equipment shall be careful, competent, trained, and qualified in the safe operation of the equipment and its proper use when servicing motor vehicles and their components. Warning information should be emphasized and understood. If the operator is not fluent in English, the manufacturer's instructions and warnings shall be read to and discussed with the operator in the operator's native language by the purchaser/owner, making sure that the operator comprehends its contents.

Owner and/or user must study and maintain for future reference the manufacturer's instructions and pertinent warning information. Owner and/or user is responsible for keeping all warning labels and instruction manuals legible and intact. Replacement labels and literature are available from the manufacturer.

INSPECTION

Visual inspection should be made before each use of the portable ram kit. Any portable ram which appears to be damaged in any way, is found to be badly worn, or operates abnormally must be removed from service. If the portable ram is accidentally subjected to an abnormal load or shock it must be inspected by a manufacturer's authorized repair facility immediately. It is recommended that an annual inspection of the portable ram be made by a manufacturer's authorized repair facility and that any defective parts, decals, or warning labels be replaced with manufacturer's specified parts.. All repairs must be made by a factory authorized service center. A list of authorized repair facilities is available from the manufacturer.

MAINTENANCE INSTRUCTIONS

Oil all release handle moving parts and be sure they continue to work properly.

BEFORE USE

IMPORTANT:

Before attempting to raise a vehicle, check vehicle service manual for recommended lifting surfaces.

RULES FOR SAFE OPERATION

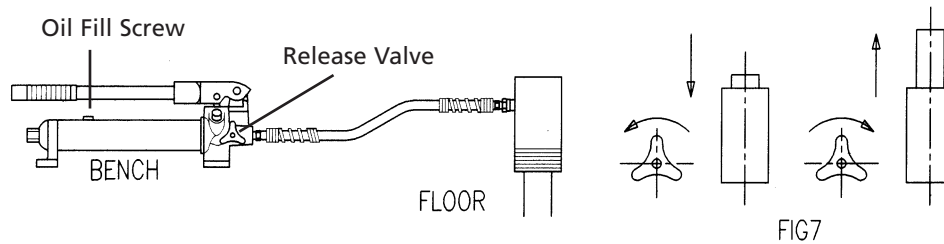
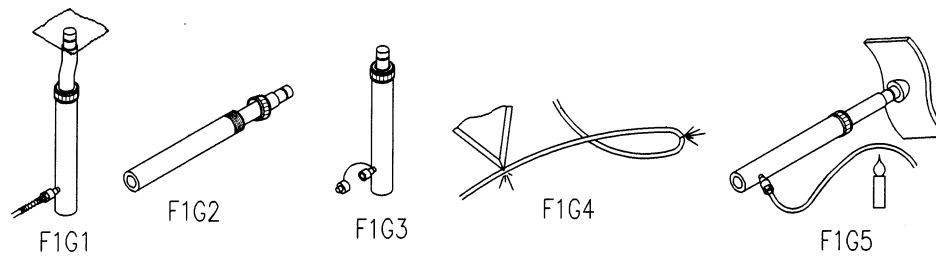
IMPORTANT: During transportation or handling, air may get trapped in hydraulic system.

To release air:

1. Hold the pump so that the oil fill screw is in an upward position.
2. Open the oil fill screw about 2 turns.
3. Open the release valve.
4. Pump the handle several times.
5. Close the oil fill screw.
6. Close the release valve. (Fig. 7)
7. The pump is now ready for operation

FOR YOUR SAFETY

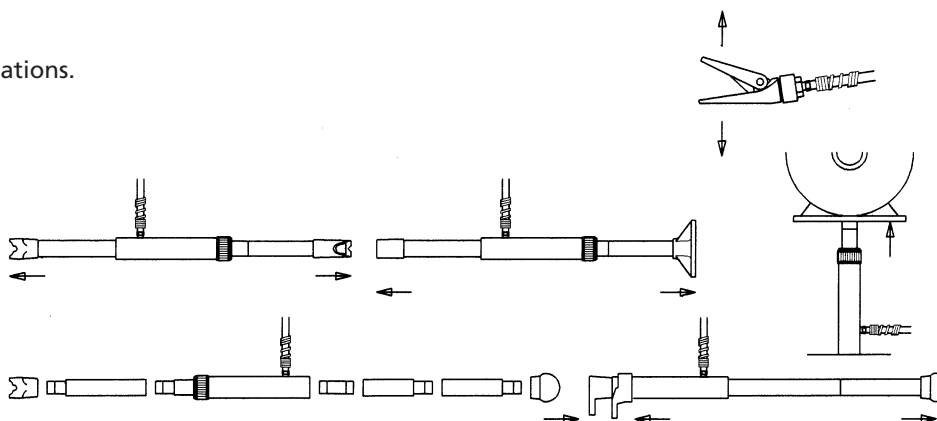
1. Do not overload beyond the rated capacity. (Fig. 1)
2. To avoid damaging the threads on the ram, use the plastic thread protector provided. (Fig. 2)
3. Keep the hose clean, and use dust caps when coupler valves are disconnected. (Fig. 3)
4. Provide clearance to avoid damage to the hose. Minimum bending radius of the hose is 2" (Fig. 4)
5. Keep equipment away from excessive heat or fire (Fig. 5)



RELEASE VALVE

Turn release valve clockwise and pump handle to apply pressure.
Turn counter-clockwise to release pressure (Fig. 7)

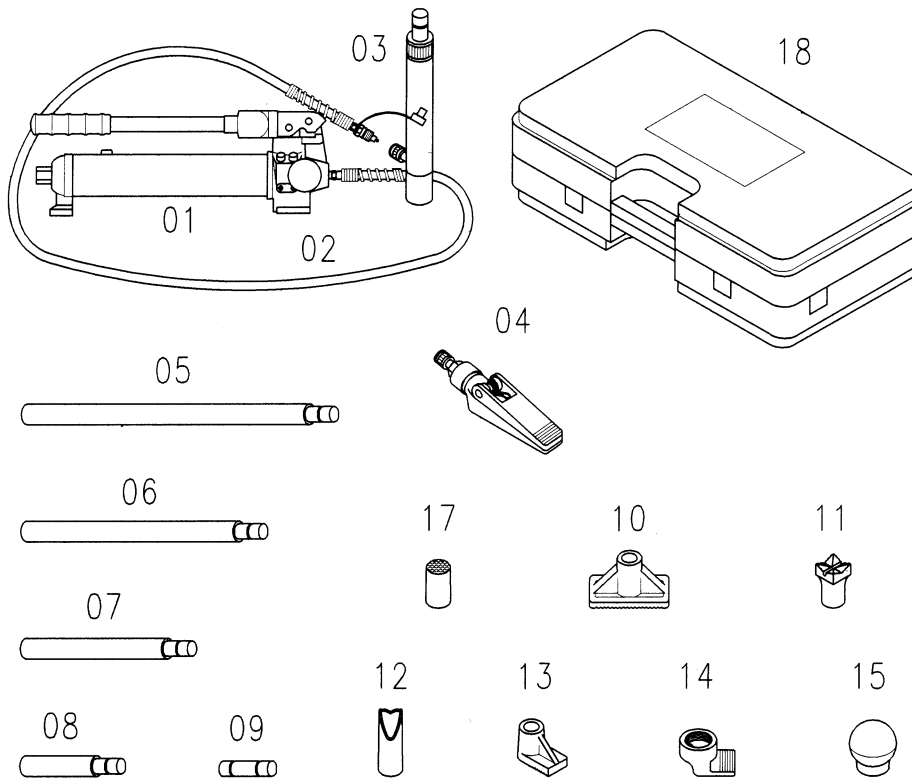
Basic hook-up combinations.



IMPORTANT

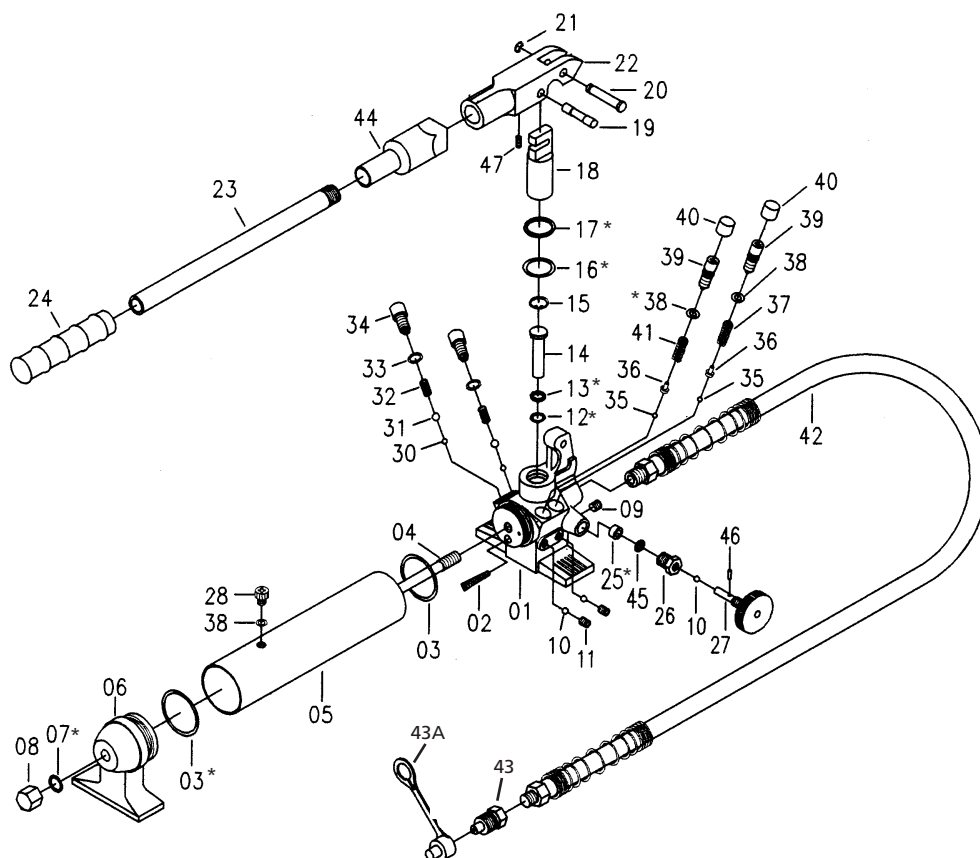
Improper usage may damage the equipment or cause personal injury.
When extensions are used, do not apply more than 50% of the rated capacity of the ram.

PARTS LIST - CSE-PRK-2S



ITEM NO.	PART NO.	DESCRIPTION
1	2501BL2	Hydraulic Pump
2	2502	Hose 5 Feet
3	2503BL2	4 Ton Ram 4" Stroke
4	2504BL2	Spreader Ram
5	2505BL2	16" Extension Tube
6	2506BL2	12" Extension Tube
7	2507BL2	8" Extension Tube
8	2508BL2	4" Extension Tube
9	2509	Male Connector
10	2510BL2	Flat Base
11	2511BL2	90° V Base
12	2512BL2	Wedge Head
13	2513BL2	Spreader Plunger Toe
14	2514BL2	Spreader Ram Toe
15	2515	Flex Head
17	2517BL2	Serrated Saddle
18	2518	Blow Molded Case

HYDRAULIC BODY AND FRAME PUMP

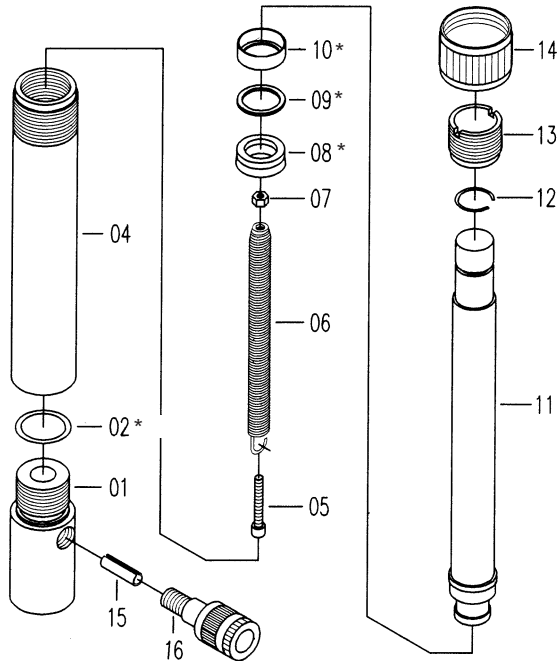


Replacement Parts

Item #43	Part # 4940A-P28	Coupling
Item #43A	Part # 4940A-P29	Dust Cap
	Part # 25-PSK	Pump Seal Kit

(*available only in 25-PSK)

4 TON HYDRAULIC RAM ASSEMBLY



Replacement Parts

Item #16	Part # 4940A-S10A	Coupling Assembly
	Part # 25-RSK	Ram Seal Kit

(*available only in 25-RSK)

WARRANTY COVERAGE

Cornwell Quality Tools Company ("Cornwell") warrants against defects in material and workmanship on this product for a period of TWO (2) YEARS from the date of original retail purchase. Subject to the conditions and limitations set forth below, Cornwell will, at its option, either repair or replace any part of the product(s) that proves defective by reason of improper workmanship or materials.

This warranty does not cover any damage to this product that results from accident, abuse, misuse, natural or personal disaster, or any unauthorized disassembly, repair, or modification. Repairs, disassembly and modification are only authorized to be made by Cornwell or a warranty service center approved by Cornwell.

WARRANTY SERVICE

To obtain warranty service, contact your Cornwell dealer, or you may ship the product to the nearest Cornwell Authorized Warranty Center (see listing), transportation prepaid. You must include your name and address, proof of the date of original retail purchase (receipt), and a detailed description of the problem you are experiencing and suspected defect.

EXCLUSIONS AND LIMITATIONS

THIS WARRANTY AND THE REMEDIES SET FORTH ABOVE ARE EXCLUSIVE AND IN LIEU OF ALL OTHER WARRANTIES, REMEDIES AND CONDITIONS, WHETHER ORAL OR WRITTEN, EXPRESS OR IMPLIED. CORNWELL SPECIFICALLY DISCLAIMS ANY AND ALL IMPLIED WARRANTIES, INCLUDING, TO THE EXTENT PERMITTED BY APPLICABLE LAW, ANY WARRANTIES OF MERCHANTABILITY AND FITNESS FOR A PARTICULAR PURPOSE. IF CORNWELL CANNOT LAWFULLY DISCLAIM IMPLIED WARRANTIES UNDER THIS LIMITED WARRANTY, ALL SUCH IMPLIED WARRANTIES ARE LIMITED IN DURATION TO THE DURATION OF THIS WARRANTY.

IN NO EVENT SHALL CORNWELL BE LIABLE TO THE PURCHASER OR TO THE USER OF A CORNWELL PRODUCT FOR ANY SPECIAL, INCIDENTAL OR CONSEQUENTIAL DAMAGES BASED UPON BREACH OF WARRANTY, BREACH OF CONTRACT, NEGLIGENCE, TORT, OR ANY OTHER LEGAL THEORY. SUCH DAMAGES INCLUDE, WITHOUT LIMITATION, EXPENSES, LOST REVENUES, LOST SAVINGS, LOST PROFITS, OR ANY OTHER INCIDENTAL OR CONSEQUENTIAL DAMAGES ARISING FROM THE PURCHASE, USE OR INABILITY TO USE THE CORNWELL PRODUCT.

Some states do not allow the exclusion or limitation of incidental or consequential damages or exclusions or limitation on the duration of implied warranties or conditions, so the above limitations or exclusions may not apply to you. This warranty gives you specific legal rights, and you may also have other rights that vary by state.

Repair kits and replacement parts are available for many Cornwell products, regardless of whether or not the product is still covered by a warranty plan.

Cornwell Quality Tools Company
667 Seville Road • Wadsworth, OH 44281-1094