

- *Operating Manual*
- *Warning Information*
- *Parts List*



**! WARNING**

**DO NOT OVERLOAD. OVERLOADING IS INDICATED BY BOWING EXTENSION TUBES OR SLIPPING ATTACHMENTS AND CAN RESULT IN PERSONAL INJURY OR DAMAGE TO THE EQUIPMENT.**

**DO NOT USE EQUIPMENT IF DAMAGED, ALTERED OR IN POOR CONDITION. DO NOT CONNECT PUMP TO HYDRAULIC SYSTEM POWERED BY ANOTHER PUMP.**

**RATED CAPACITY OF PUMP AND EQUIPMENT MUST BE EQUAL. WHEN OFFSET ATTACHMENTS ARE USED, THE RATED CAPACITY IS ALWAYS REDUCED BY 50%. FOR EACH EXTENSION TUBE USED IN THE SETUP, THE OVERALL RATED CAPACITY IS REDUCED AN ADDITIONAL 50%. REFER TO THE OPERATING INSTRUCTIONS PROVIDED FOR TYPICAL SETUPS AND CORRESPONDING LOAD CAPACITIES.**

**PRIOR TO APPLYING A LOAD, INSURE THAT ALL ATTACHMENTS AND EXTENSION TUBES ARE FULLY ENGAGED.**

**INSURE LOAD IS CENTRALLY APPLIED TO ATTACHMENTS AND RAM SADDLE TO MINIMIZE AN OFF-CENTER LOAD CONDITION.**

**NEVER USE THIS EQUIPMENT WITHOUT A FORCE GAUGE TO VERIFY THE ACTUAL LOAD BEING APPLIED FOR VARIOUS TYPES OF SETUPS USED.**

**READ, STUDY, AND UNDERSTAND ALL WARNINGS AND OPERATING INSTRUCTIONS FURNISHED WITH THIS BODY REPAIR KIT BEFORE USE. FAILURE TO HEED THESE WARNINGS MAY RESULT IN LOSS OF LOAD, DAMAGE TO JACK AND/OR FAILURE RESULTING IN PERSONAL INJURY OR PROPERTY DAMAGE.**

**THIS OPERATING MANUAL CONTAINS IMPORTANT SAFETY INFORMATION.**

**READ CAREFULLY AND UNDERSTAND ALL INFORMATION BEFORE OPERATING THIS TOOL.**

**SAVE THIS MANUAL FOR FUTURE USE.**

**! WARNING**

**DO NOT OVERLOAD BEYOND RATED CAPACITY. USE ONLY ON HARD, LEVEL SURFACES CAPABLE OF SUSTAINING THE LOAD. DO NOT OPEN OIL FILLER PLUG UNLESS RAM IS FULLY RETRACTED. ALWAYS WEAR SAFETY GLASSES WHEN USING THIS EQUIPMENT. DO NOT USE AS A VEHICLE LIFTING DEVICE OR AS A VEHICLE SUPPORT. FAILURE TO HEED THESE WARNINGS MAY RESULT IN LOSS OF LOAD, DAMAGE TO JACK AND/OR FAILURE RESULTING IN PERSONAL INJURY OR PROPERTY DAMAGE.**

# **CSE-PRK1000**

## 10 Ton Portable Ram Kit

## OWNER/USER RESPONSIBILITY

The owner and/or user must have an understanding of the manufacturer's operating instructions and warnings before using the portable ram kit. Personnel involved in the use and operation of equipment shall be careful, competent, trained, and qualified in the safe operation of the equipment and its proper use when servicing motor vehicles and their components. Warning information should be emphasized and understood. If the operator is not fluent in English, the manufacturer's instructions and warnings shall be read to and discussed with the operator in the operator's native language by the purchaser/owner, making sure that the operator comprehends its contents.

Owner and/or user must study and maintain for future reference the manufacturer's instructions and pertinent warning information. Owner and/or user is responsible for keeping all warning labels and instruction manuals legible and intact. Replacement labels and literature are available from the manufacturer.

## INSPECTION

Visual inspection should be made before each use of the portable ram kit. Any portable ram kit which appears to be damaged in any way, is found to be badly worn, or operates abnormally must be removed from service. If the portable ram kit is accidentally subjected to an abnormal load or shock it must be inspected by a manufacturer's authorized repair facility immediately. It is recommended that an annual inspection of the portable ram kit be made by a manufacturer's authorized repair facility and that any defective parts, decals, or warning labels be replaced with manufacturer's specified parts.. All repairs must be made by a factory authorized service center. A list of authorized repair facilities is available from the manufacturer.

## WARRANTY COVERAGE

Cornwell Quality Tools Company ("Cornwell") warrants against defects in material and workmanship on this product for a period of TWO (2) YEARS from the date of original retail purchase. Subject to the conditions and limitations set forth below, Cornwell will, at its option, either repair or replace any part of the product(s) that proves defective by reason of improper workmanship or materials.

This warranty does not cover any damage to this product that results from accident, abuse, misuse, natural or personal disaster, or any unauthorized disassembly, repair, or modification. Repairs, disassembly and modification are only authorized to be made by Cornwell or a warranty service center approved by Cornwell.

### WARRANTY SERVICE

To obtain warranty service, contact your Cornwell dealer, or you may ship the product to the nearest Cornwell Authorized Warranty Center (see listing), transportation prepaid. You must include your name and address, proof of the date of original retail purchase (receipt), and a detailed description of the problem you are experiencing and suspected defect.

### EXCLUSIONS AND LIMITATIONS

THIS WARRANTY AND THE REMEDIES SET FORTH ABOVE ARE EXCLUSIVE AND IN LIEU OF ALL OTHER WARRANTIES, REMEDIES AND CONDITIONS, WHETHER ORAL OR WRITTEN, EXPRESS OR IMPLIED. CORNWELL SPECIFICALLY DISCLAIMS ANY AND ALL IMPLIED WARRANTIES, INCLUDING, TO THE EXTENT PERMITTED BY APPLICABLE LAW, ANY WARRANTIES OF MERCHANTABILITY AND FITNESS FOR A PARTICULAR PURPOSE. IF CORNWELL CANNOT LAWFULLY DISCLAIM IMPLIED WARRANTIES UNDER THIS LIMITED WARRANTY, ALL SUCH IMPLIED WARRANTIES ARE LIMITED IN DURATION TO THE DURATION OF THIS WARRANTY.

IN NO EVENT SHALL CORNWELL BE LIABLE TO THE PURCHASER OR TO THE USER OF A CORNWELL PRODUCT FOR ANY SPECIAL, INCIDENTAL OR CONSEQUENTIAL DAMAGES BASED UPON BREACH OF WARRANTY, BREACH OF CONTRACT, NEGLIGENCE, TORT, OR ANY OTHER LEGAL THEORY. SUCH DAMAGES INCLUDE, WITHOUT LIMITATION, EXPENSES, LOST REVENUES, LOST SAVINGS, LOST PROFITS, OR ANY OTHER INCIDENTAL OR CONSEQUENTIAL DAMAGES ARISING FROM THE PURCHASE, USE OR INABILITY TO USE THE CORNWELL PRODUCT.

Some states do not allow the exclusion or limitation of incidental or consequential damages or exclusions or limitation on the duration of implied warranties or conditions, so the above limitations or exclusions may not apply to you. This warranty gives you specific legal rights, and you may also have other rights that vary by state. Repair kits and replacement parts are available for many Cornwell products, regardless of whether or not the product is still covered by a warranty plan.

## MAINTENANCE INSTRUCTIONS

Oil all release handle moving parts and be sure they continue to work properly.

## BEFORE USE

### IMPORTANT:

Before attempting to raise a vehicle, check vehicle service manual for recommended lifting surfaces.

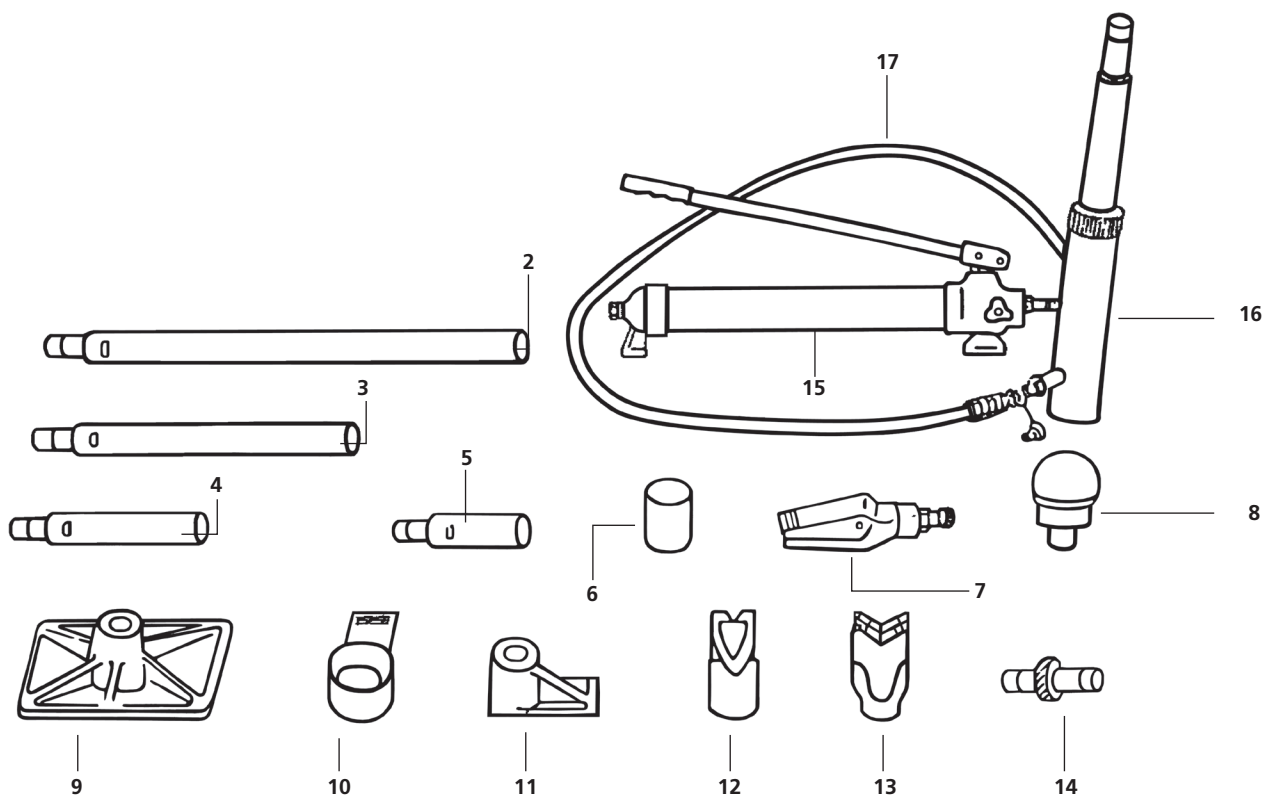
### PORTABLE RAM KIT PUMP BLEEDING PROCEDURES:

The following bleeding procedure may be required before initial use:

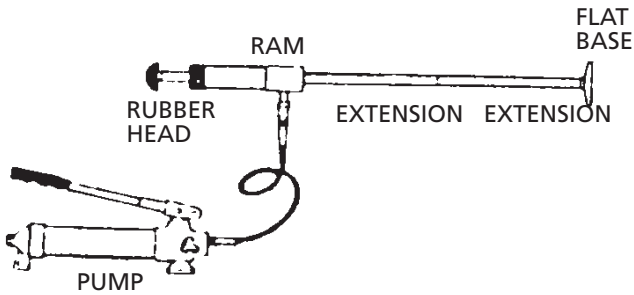
1. Open oil fill screw three or four turns.
2. Attach the ram to the pump.
3. Close the release valve and pump the ram out as far as it will go.
4. Release the ram until the first drop of oil comes out of the oil fill hole.
5. Tighten up the oil fill screw and release the ram all of the way.
6. Make sure the pump is full of fluid after steps 1- 5 are completed.

This ends the bleeding procedure. The pump and ram should be working at full stroke.

# PARTS LIST - CSE-PRK1000



ITEM NO.	PART NO.	DESCRIPTION
1	RS4910A01	Storage Case (not shown)
	RS4910A01WH	Wheel for Storage Case
2	RS4910A02BL2	27" Extension Bar
3	RS4910A03BL2	18" Extension Bar
4	RS4910A04BL2	10" Extension Bar
5	RS4910A05BL2	5" Extension Bar
6	RS4910A06BL2	Serrated Cap
7	RS4910A07BL2	Spreading Wedge
8	RS4910A08	Big Rubber Head
9	RS4910A09BL2	Base Plate
10	RS4910A10BL2	Ram Toe
11	RS4910A11BL2	Plunger Toe
12	RS4910A12BL2	Cleft Cap
13	RS4910A13BL2	V Base
14	RS4910A14	Male Connector
15	RS4910A15BL2	10 Ton Pump Unit with Hose
16	RS4910A16BL2	Ram Unit
17	RS4940A18	Hydraulic Hose

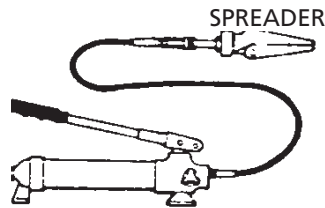


## VERSATILITY

Use the 10 Ton Pump with the Multi-Directional Ram, and attachment combinations, some of which are shown below.

## TIGHT PLACES

For the difficult places to get into, use the spreader.

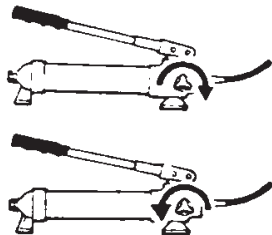


## HOW TO OPERATE

### RELEASE VALVE

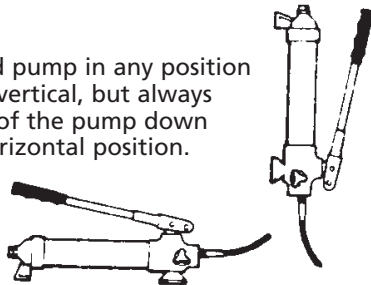
Turn knob **CLOCKWISE** and pump handle for applying pressure.

Turn knob **COUNTER-CLOCKWISE** to release pressure.



### PUMP POSITION

It is possible to hold pump in any position from horizontal to vertical, but always keep the hose end of the pump down when above the horizontal position.



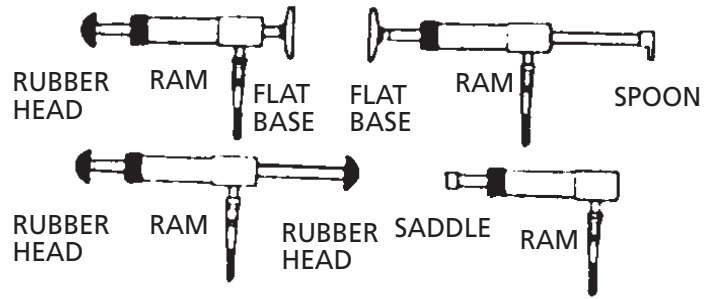
## SAFETY PRECAUTIONS

### OIL LEVEL

Collapse ram if connected to pump. Place pump in an upright position as shown. Remove filler plug and add hydraulic oil until it is level with the full mark on the stem.



## RAM ATTACHMENT COMBINATIONS



Some of the hundreds of combinations possible.

### RAM LOAD

Never lift a load that exceeds the capacity of the ram. Do not over extend the ram, because it is possible to force the plunger out of the top of the ram.



### THREAD PROTECTION

When possible, guard ram threads with protector ring and saddle as illustrated.



### DUST CAPS

When coupler valves are disconnected, screw in dust caps to keep the oil lines clean.



### OFF-CENTER LOADS

Be careful when load is not centered on ram plunger. Pump carefully - IF YOU FEEL THAT YOU HAVE TO PUMP UNUSUALLY HARD - STOP OPERATION. Adjust set-up so the off-center load is not so great.



### PROTECT YOUR HOSE

Do not drop heavy objects on your hose and avoid sharp kinks. Provide proper clearance to avoid damage to the hose and couplers.

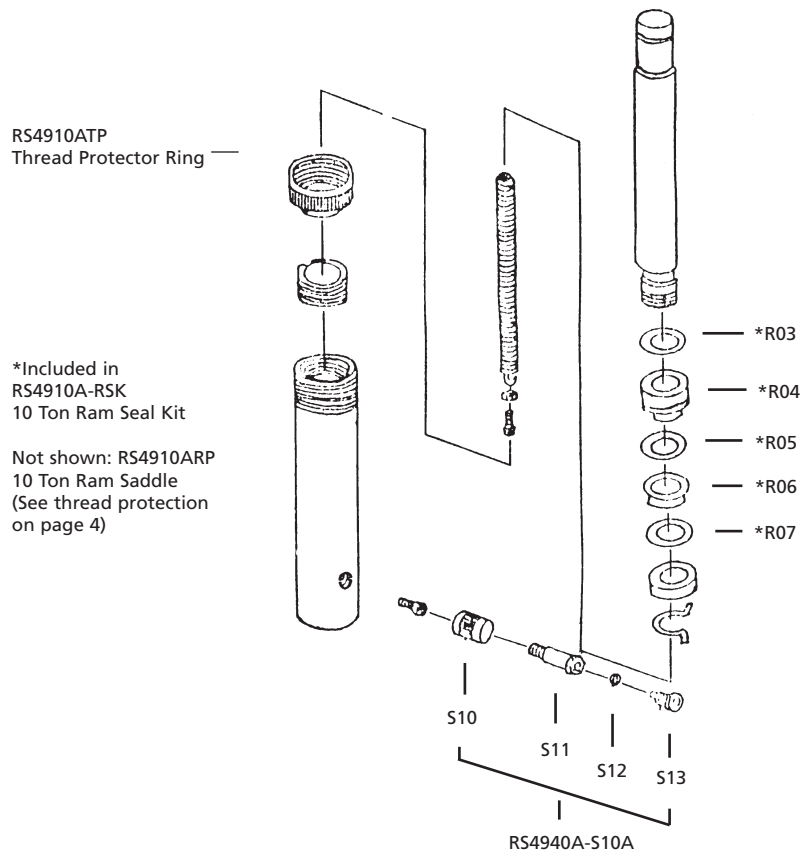


### HEAT AND FIRE

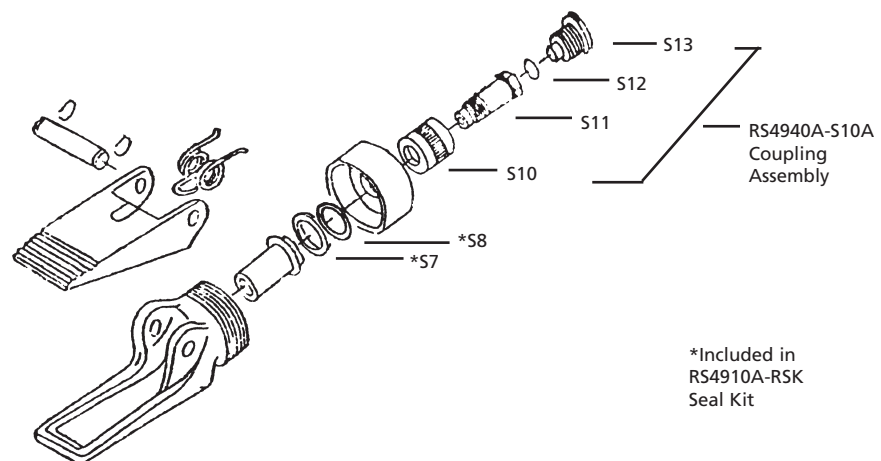
Always keep your equipment away from excessive heat or fire. Heat always weakens the equipment.



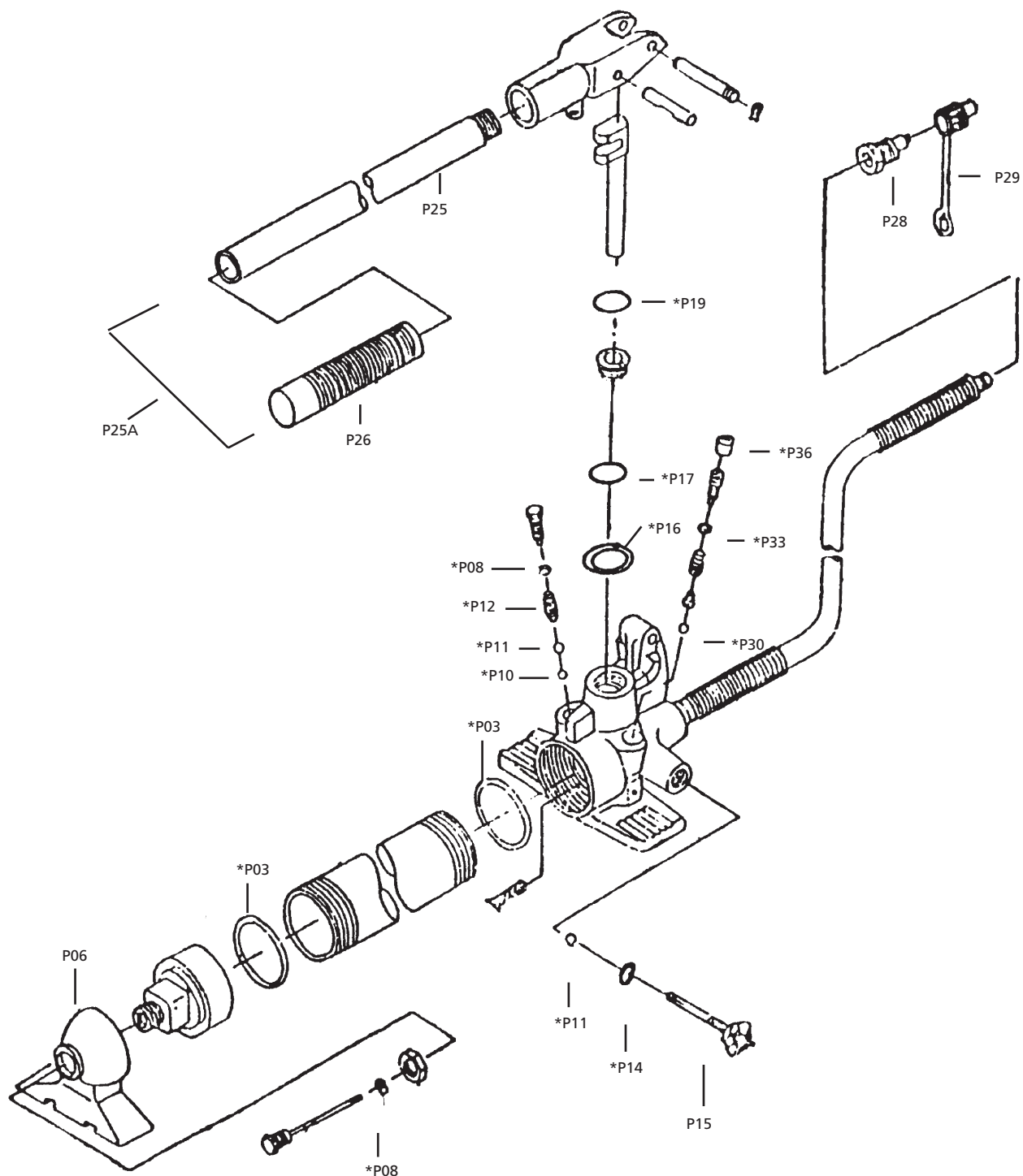
# 10 TON HYDRAULIC RAM ASSEMBLY



# HYDRAULIC SPREADER ASSEMBLY



# HYDRAULIC BODY AND FRAME PUMP



\* Included in RS4940A-PSK

Item	Part No.	Description
P06	RS4940A-P06BL2	Pump Foot
P15	RS4940A-P15	Release Valve Stem
P25A	RS4940A-P25A	Handle
P28	RS4940A-P28	Coupling
P29	RS4940A-P29	Dust Cap
*	RS4940A-PSK	Pump Seal Kit