



CSEPR4TA AND CSEPR10TA

4 Ton and 10 Ton Portable
Repair Kit

OPERATING MANUAL • WARNING INFORMATION • PARTS LIST



**CSEPR4TA
4 TON**



**CSEPR10TA
10 TON**

SPECIFICATIONS

	CSEPR4TA	CSEPR10TA
Maximum Capacity	4 Ton @ 7,250 psig	10 Ton @ 7,250 psig
Ram Minimum Height	10.5"	12.7"
Stroke	4.7"	5.1"
Fluid Capacity	12.8 oz.	22 oz.
Net Weight	43 Lbs.	68.3 Lbs.
Shipping Weight	45.2 Lbs.	71.7 Lbs.

Manufactured to comply with the
ASME PASE-2019 Safety Standard

CSEPR4TA/CSEPR10TA

Copyright © Professional Tool Products, 2021
All rights reserved



CSEPR4TA AND CSEPR10TA

4 Ton and 10 Ton Portable Repair Kit

WARNING INFORMATION



This is the safety alert symbol. It is used to alert you to potential personal injury hazards. Obey all safety messages that follow this symbol to avoid possible injury or death.

WARNING

WARNING: Indicates a hazardous situation which, if not avoided, could result in death or serious injury.



IMPORTANT: READ THESE INSTRUCTIONS BEFORE OPERATING

BEFORE USING THIS DEVICE, READ THIS MANUAL COMPLETELY AND THOROUGHLY, UNDERSTAND ITS OPERATING PROCEDURES, SAFETY WARNINGS AND MAINTENANCE REQUIREMENTS.

It is the responsibility of the owner to make sure all personnel read this manual prior to using the device. It is also the responsibility of the device owner to keep this manual intact and in a convenient location for all to see and read. If the manual or product labels are lost or not legible, contact Cornwell for replacements. If the operator is not fluent in English, the product and safety instructions shall be read to and discussed with the operator in the operator's native language by the purchaser/owner or his designee, making sure that the operator comprehends its contents.

THE NATURE OF HAZARDOUS SITUATIONS

WARNING

The use of portable automotive supporting devices are subject to certain hazards that cannot be prevented by mechanical means, but only by the exercise of intelligence, care, and common sense. It is therefore essential to have owners and personnel involved in the use and operation of the equipment who are careful, competent, trained, and qualified in the safe operation of the equipment and its proper use. Examples of hazards are dropping, tipping or slipping of loads caused primarily by improperly securing loads, overloading, off-centered loads, use on other than hard level surfaces, and using equipment for a purpose for which it was not designed.

METHODS TO AVOID HAZARDOUS SITUATIONS

WARNING

- Read, study, understand, and follow all instructions before operating this device.
- The kit owner is responsible for the kit being used in accordance with OSHA, state, and local safety standards.
- User and bystanders must wear eye protection that meets ANSI Z87.1 and OSHA standards.
- Do not use beyond rated capacity.
- When attachments and adapters are used with the kit, the rated capacity of the kit shall be no greater than the rated capacity of the lowest rated component or combination of components that makes up the kit. Refer to the Owner's Manual section titled "APPLYING FORCE" for typical applications and corresponding load capacities.
- Use a pressure gauge that indicates force applied.
- Spreader Ram is rated at 1/2 ton capacity.
- Rubber Heads are rated at 1/2 ton capacity in the 4 ton kit and 1 ton capacity in the 10 ton kit.
- Do not overextend the rams.
- When using extension tubes, position the shortest tube farthest away from the cylinder.
- Attachments and extension tubes must be aligned and fully engaged so the ram force is straight and avoids off-center conditions.
- Before operating, tighten all hose, gauge and manifold connections so they are secure and leak free. Do not over tighten or it may cause premature thread failure or split pressure fittings. Tighten all hose quick disconnect fittings by hand only.
- Do not subject the hose to extreme heat or cold, sharp surfaces, abrasion, impact, kinking, twisting, curling, bending or any condition that restricts or affects fluid flow.
- Make sure setup is stable and secure before performing any work.
- Use this kit for the intended purpose of vehicle body/frame repair only.
- Only components supplied with this kit shall be used with this kit.
- No alterations or modifications shall be made to any of the kit components.
- Failure to heed these warnings may result in serious or fatal personal injury and/or property damage.

WARNING: This product can expose you to chemicals including nickel, which is known to the State of California to cause cancer and birth defects or other reproductive harm. For more information go to www.P65Warnings.ca.gov.

CONSEQUENCES OF NOT AVOIDING HAZARDOUS SITUATIONS

WARNING

Failure to read this manual completely and thoroughly, understand its OPERATING INSTRUCTIONS, SAFETY WARNINGS, MAINTENANCE INSTRUCTIONS and not comply with them, and neglecting the METHODS TO AVOID HAZARDOUS SITUATIONS could cause accidents resulting in serious or fatal personal injury and/or property damage.



CSEPR4TA AND CSEPR10TA

4 Ton and 10 Ton Portable Repair Kit

PORTABLE HYDRAULIC POWER KIT SETUP INSTRUCTIONS

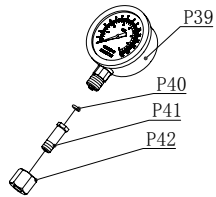


This is the Safety Alert Symbol used for the SETUP INSTRUCTIONS section of this manual to alert you to potential personal injury hazards. Obey all instructions to avoid possible injury or death.

SETUP

Please refer to the exploded view drawings on page 7-12 in this manual in order to identify parts:

1. Refer to the parts list and drawing in this manual to identify parts mentioned in this setup procedure.
2. Before installing the force gage (P39) remove the plug A in the hose end of the pump (01). Thread the gage into the gage fitting (P41) and connect with the receiver (P42) by turning it clockwise. Make sure the connection is tight to prevent leakage.
3. Open the release valve (P29) by turning it counterclockwise until it stops, then pump the handle 4 or 5 full incremented pump strokes to purge air from the hydraulic system.
4. Install ram (02) or spreader (03) at the end of hose (P30) and secure the quick disconnect fittings together by hand tightening the threaded sleeve (R06-4T & R15-10T) on the female coupler (R15-4T & R16-10T) to the male coupler (P31) at the end of the hose (P30).



OPERATION



This is the safety alert symbol used for the OPERATING INSTRUCTIONS section of this manual to alert you to potential personal injury hazards. Obey all instructions to avoid possible injury or death.



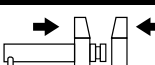
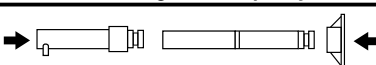
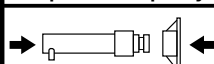
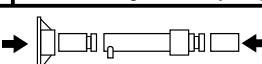
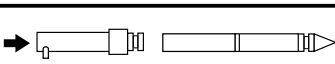
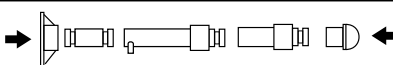
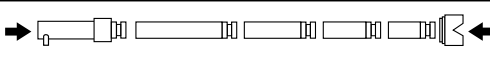
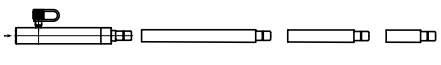
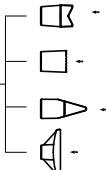
1. Study the work to be done in order to determine the type ram and other attachments you will be using. **Consult the enclosed chart titled “Applicable force for component set ups” in order to determine the maximum allowable force to be used in your specific setup.** All rams have female hose disconnects attached to them, and the end of the hose has the male quick disconnect attached to it. Insert the end of the hose (P30) all the way in to the ram's female quick disconnect (R15). Slide the female connector's threaded sleeve (R06-4T & R15-10T) on to the threads at the end of the hose (P30) and hand tighten. Never use any tools to tighten this connection.
2. Consult this Owner's Manual section titled APPLICABLE FORCE FOR COMPONENT SET UPS for typical attachment and extension tube setups and pay very close attention to the corresponding load ratings of certain attachment connections. The use of extension tubes, ram or plunger toes greatly reduces the hydraulic system's capacity. When using extension tubes, put the shortest tubes on the ends of the setup.
3. The pump (1) may be operated in the horizontal or vertical position but the pump (1) must point down when used in the vertical position.
4. Make sure all hydraulic and attachment connections are fully engaged and tight so ram force is straight in order to avoid off-center load conditions.
5. During setup, make sure the hose routing avoids kinks, twists, curls or bends that will impede hydraulic fluid flow. Do not use the hose (P30) as a means to carry the kit components. Do not subject the hose (P30) to any hazards such as fire, extreme heat or cold, sharp surfaces, or heavy impact. **IF A HOSE (P30) RUPTURES, BURSTS, OR NEEDS TO BE DISCONNECTED, IMMEDIATELY SHUT THE PUMP (1) OFF AND OPEN THE RELEASE VALVE (P29) TO RELEASE HYDRAULIC PRESSURE. NEVER GRASP A LEAKING PRESSURIZED HOSE, FITTING OR COMPONENT WITH YOUR HANDS OR SUFFER SERIOUS INJURY.**
6. Always use the pressure gauge (14) to make sure you are within the required force range when operating the system.
7. In order to pump the ram (2), it will be necessary to turn the release valve knob (P29) in a clockwise direction until tight. Tighten by hand only.
8. Pumping the handle (P34) up and down transfers the hydraulic fluid from the pump's reservoir (P6), through the hose (P30), in to the cylinder and extends the ram with each incremental pump stroke.
9. To release the pressure and return the ram (2) back in to its cylinder (R13-4T & R14-10T), turn the release valve knob (P29) in a counterclockwise direction very slowly. Turning the release valve knob (P29) slowly will determine the speed in which the ram (2) will retract back into its cylinder (R13-4T & R14-10T).
IMPORTANT: The pump includes an overload valve that will activate at the pump's rated capacity only. If the setup requires a reduced rating, the operator is responsible for using the gauge to determine when to stop pumping since the overload valve (P24) is set to a higher rating.
10. Make sure the ram (2) is completely retracted inside its cylinder (R13-4T & R14-10T) before disconnecting the hose from the cylinder.



CSEPR4TA AND CSEPR10TA

4 Ton and 10 Ton Portable Repair Kit

11. The the hose (P30) and the ram (2) are repeatedly disconnected and exposed to shop or work place floors that are covered with dirt and debris. It is important to use the dust caps (P32) provided to prevent contaminants from entering the air and hydraulic systems.
12. Based on continuous engagement and disengagement of the hose (P30) from the cylinder (R13-4T & R14-10T), eventually it will become necessary to add hydraulic fluid to the pump's reservoir (P6). Completely retract the ram before adding hydraulic fluid. Do not overfill in order to avoid personal injury and hydraulic malfunction. Use only hydraulic jack oil, Chevron Hydraulic Oil AW ISO 32 or its equivalent Unocal Unax AW 150. Other fluids will cause damage to the hydraulic seals.

APPLICABLE FORCE FOR COMPONENT SET UPS		 50% of Plunger Toe Capacity
 Spreader Capacity	 100% of Plunger Toe Capacity	 25% of Ram Capacity
 100% of Ram Capacity	 100% of Ram Capacity	 25% of Ram Capacity
 100% of Rubber Head Capacity		 6% of Ram Capacity
 12% of Ram Capacity		
		

PREVENTATIVE MAINTENANCE



This is the safety alert symbol used for the PREVENTATIVE MAINTENANCE section of this manual to alert you to potential personal injury hazards. Obey all instructions to avoid possible injury or death.

1. Always store the kit in a well protected area where it will not be exposed to inclement weather, corrosive vapors, abrasive dust, or any other harmful elements. The jack must be cleaned of water, snow, sand, grit, oil, grease or other foreign matter before using.
2. Based on continuous engagement and disengagement of the hose from the cylinder, eventually it will become necessary to add hydraulic fluid to the pump's reservoir. Completely retract the ram before adding hydraulic fluid. Do not overfill in order to avoid personal injury and hydraulic malfunction. Use only hydraulic jack oil. Other fluids will cause damage to the hydraulic seals.

Warning: In order to prevent seal damage and kit failure, never use alcohol, hydraulic brake fluid or transmission oil in the pump.

3. Every kit owner is responsible for keeping the kit labels clean and readable. Use a mild soap solution to wash external surfaces of the kit components but not any moving hydraulic components.
4. Do not attempt to make any hydraulic repairs unless you are a qualified hydraulic repair person that is familiar with this equipment. Repairs must be performed by an authorized service center.



CSEPR4TA AND CSEPR10TA

4 Ton and 10 Ton Portable Repair Kit

TROUBLESHOOTING

Important: If repairs are necessary they must be performed in a dirt-free environment by qualified personnel who are familiar with this equipment.

PROBLEM	ACTION
1. Ram will not lift rated Load.	Turn reservoir fill screw (P7) counterclockwise two complete revolutions and wait 10 seconds. Turn screw clockwise until tight and proceed to pump. If that does not fix the problem check the pump reservoir's fluid level. The proper amount of fluid should be CSEPR4TA - 12.8 ounces and CSEPR10TA - 22 ounces. Use only hydraulic jack oil. For any other problems contact Cornwell authorized hydraulic service center.
2. Unit will not sustain rated load or feels "spongy" under rated load.	Purge air from hydraulic system as above.
3. Unit will not lift to full height.	Purge air from hydraulic system as above.
4. Handle tends to raise up while the unit is under rated load.	Pump the handle rapidly several times to push oil past ball valves in power unit.
5. Unit still does not operate.	Contact Cornwell authorized hydraulic service center.

INSPECTION

Visual inspection should be made before each use of the engine stand, checking for damaged, loose or missing parts. Each engine stand must be inspected by a manufacturer's repair facility immediately, if subjected to an abnormal load or shock. Any stand which appears to be damaged in any way, is found to be badly worn, or operates abnormally **MUST BE REMOVED FROM SERVICE** until necessary repairs are made by a manufacturer's authorized repair facility. It is recommended that an annual inspection of the stand be made by a manufacturer's authorized repair facility and that any defective parts, decals or warning labels be replaced with manufacturer's specified parts. A list of authorized repair facilities is available from the manufacturer.

WARRANTY COVERAGE

Cornwell Quality Tools Company ("Cornwell") warrants this product against defects in material and workmanship for a period of TWO (2) YEAR from the date of original retail purchase. Subject to the conditions and limitations set forth below, Cornwell will, at its option, either repair or replace any part of the product(s) that proves defective by reason of improper workmanship or materials.

This warranty does not cover any damage to this product that results from accident, abuse, misuse, natural or personal disaster, or any unauthorized disassembly, repair, or modification. Repairs, disassembly and modification are only authorized to be made by Cornwell or a Cornwell Authorized Warranty Center.



CSEPR4TA AND CSEPR10TA

4 Ton and 10 Ton Portable Repair Kit

WARRANTY SERVICE

In order to have your tool repaired, return the tool to any Cornwell Authorized Warranty Center, freight prepaid. Please include a copy of your proof of purchase and a brief description of the problem. The tool will be inspected and if any part or parts are found to be defective in material or workmanship, they will be repaired free of charge, and the repaired tool will be returned to you freight prepaid.

EXCLUSIONS AND LIMITATIONS

THIS WARRANTY AND THE REMEDIES SET FORTH ABOVE ARE EXCLUSIVE AND IN LIEU OF ALL OTHER WARRANTIES, REMEDIES AND CONDITIONS, WHETHER ORAL OR WRITTEN, EXPRESS OR IMPLIED. CORNWELL SPECIFICALLY DISCLAIMS ANY AND ALL IMPLIED WARRANTIES, INCLUDING, TO THE EXTENT PERMITTED BY APPLICABLE LAW, ANY WARRANTIES OF MERCHANTABILITY AND FITNESS FOR A PARTICULAR PURPOSE. IF CORNWELL CANNOT LAWFULLY DISCLAIM IMPLIED WARRANTIES UNDER THIS LIMITED WARRANTY, ALL SUCH IMPLIED WARRANTIES ARE LIMITED IN DURATION TO THE DURATION OF THIS WARRANTY.

IN NO EVENT SHALL CORNWELL BE LIABLE TO THE PURCHASER OR TO THE USER OF A CORNWELL PRODUCT FOR ANY SPECIAL, INCIDENTAL OR CONSEQUENTIAL DAMAGES BASED UPON BREACH OF WARRANTY, BREACH OF CONTRACT, NEGLIGENCE, TORT, OR ANY OTHER LEGAL THEORY. SUCH DAMAGES INCLUDE, WITHOUT LIMITATION, EXPENSES, LOST REVENUES, LOST SAVINGS, LOST PROFITS, OR ANY OTHER INCIDENTAL OR CONSEQUENTIAL DAMAGES ARISING FROM THE PURCHASE, USE OR INABILITY TO USE THE CORNWELL PRODUCT.

Some states do not allow the exclusion or limitation of incidental or consequential damages or exclusions or limitation on the duration of implied warranties or conditions, so the above limitations or exclusions may not apply to you. This warranty gives you specific legal rights, and you may also have other rights that vary by state.

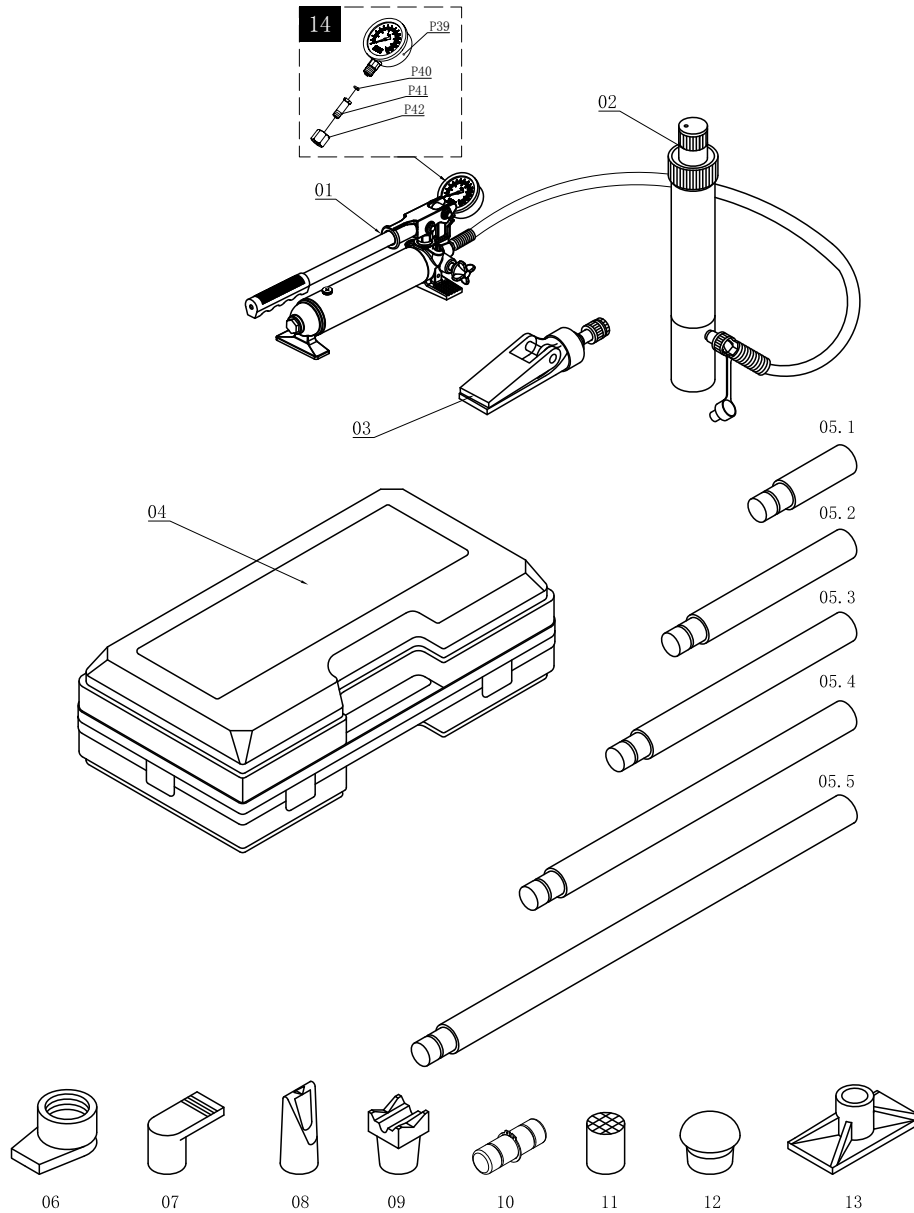
Repair kits and replacement parts are available for many Cornwell products, regardless of whether or not the product is still covered by a warranty plan.



CSEPR4TA AND CSEPR10TA

4 Ton and 10 Ton Portable Repair Kit

4 Ton Portable Repair Kit - Parts



Item #	Part #	Description	Qty
1	RS4TPANG	Pump w/Hose, Neon Green	1
	RS4SHS	Hose	1
2	RS4TRNG	Ram, Neon Green	1
3	RSSPRANG	Spreader, Neon Green	1
4	RS4T01	Case	1
5.1	RS4T02.1NG	3.23" (82mm) Extension, Neon Green	1
5.2	RS4T02.2NG	5.04" (128mm) Extension, Neon Green	1
5.3	RS4T02.3NG	8.50" (216mm) Extension, Neon Green	1
5.4	RS4T02.4NG	16.54" (420mm) Extension, Neon Green	1
5.5	RS4T02.5NG	19.49" (495mm) Extension, Neon Green	1
6	RS4T04ANG	Ram Toe, Neon Green	1

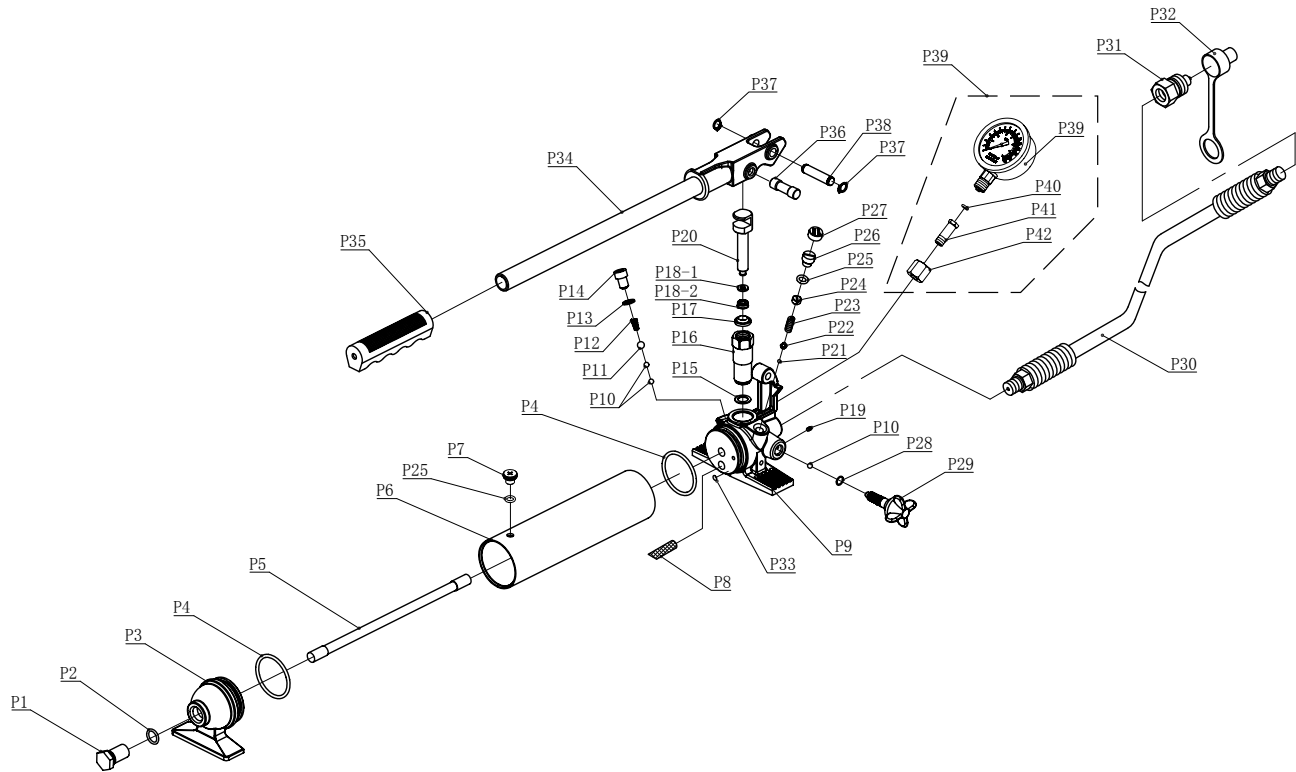
Item #	Part #	Description	Qty
7	RS4T05NG	Plunger Toe, Neon Green	1
8	RS4T06NG	Wedge Head, Neon Green	1
9	RS4T07NG	V-Base, Neon Green	1
10	RS4T08	Male Connector	1
11	RS4T09NG	Serrated Saddle, Neon Green	1
12	RS4T10	Rubber Head	1
13	RS4T03NG	Flat Base, Neon Green	1
14	RSPGA	Pressure Gauge Assembly	1
Not Shown	RSCSEPR4TALK	Product Label Kit	1



CSEPR4TA AND CSEPR10TA

4 Ton and 10 Ton Portable Repair Kit

RS4TPANG - 4 Ton Pump



Item #	Part #	Description	Qty
P1		Screw	1
P2	*	O-ring	1
P3	RS4TPFNG	Pump Foot, Neon Green	1
P4	*	O-ring	2
P5		Tie Rod	1
P6		Reservoir	1
P7		Breather Screw	1
P8		Oil Filter	1
P9		Valve Block	1
P10	*	Ball	3
P11	*	Ball	1
P12	*	Spring	1
P13	*	Washer	1
P14		Plug Screw	1
P15	*	Copper Ring	1
P16	*	Piston Seat	1
P17	*	Anti-dust Ring	1
P18	*	Sealing Ring (incl 18-1 & 18-2)	1
P19		Screw	1
P20		Piston	1
P21	*	Ball	1

P22	*	Ball Cup	1
P23	*	Spring	1
P24	*	Screw	1
P25	*	O-ring	2
P26		Screw	1
P27		Screw Cap	1
P28	*	O-ring	1
P29	RSP15NG	Release Valve, Neon Green	1
P30	RSHS	Hose	1
P31	RSP17	Male Coupler	1
P32	RSP18	Hose Dust Cover	1
P33		Magnet	1
P34	RS4THNDLNG	Handle, Neon Green	1
P35		Handle Sleeve	1
P36		Pin	1
P37		Sealing Ring	2
P38		Pin	1
P39	RSPGA	Pressure Gauge (incl P39 - P42)	1
P40		O-ring	1
P41		Gauge Fitting	1
P42		Nut	1

* Items identified by an asterisk are available in pump seal kit, RS4TPSKA.

NOTE: Items which are not identified by a part number or with an asterisk are not available separately.

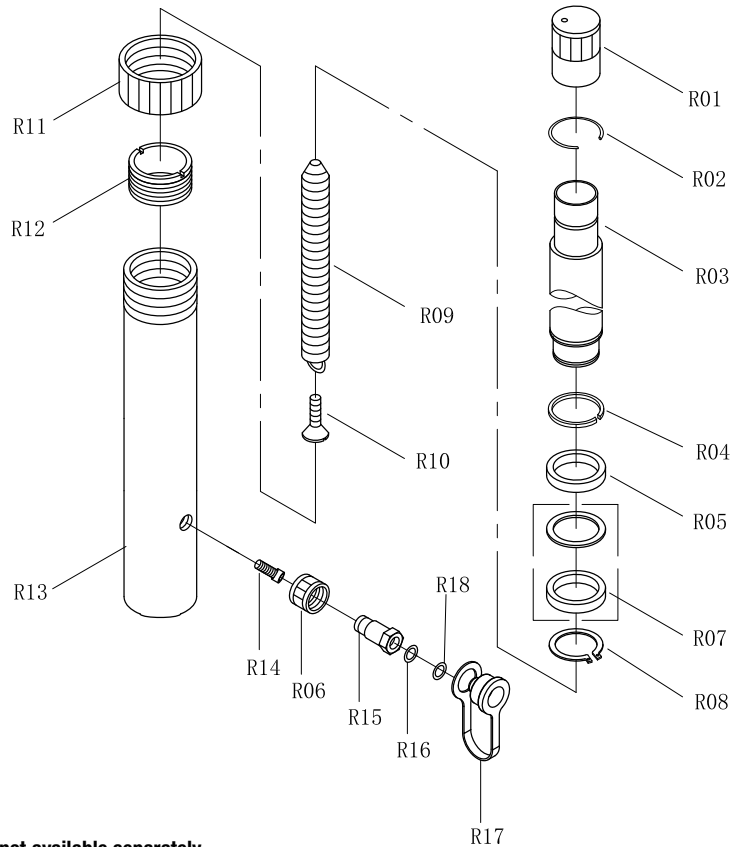


CSEPR4TA AND CSEPR10TA

4 Ton and 10 Ton Portable Repair Kit

RS4TRNG - 4 Ton Ram

Item #	Part #	Description	Qty
R01	RS4TR01	Cover	1
R02		Circlip	1
R03		Piston Rod	1
R04	*	Circlip	1
R05	*	Bushing	1
R06		Nut	1
R07	*	Sealing Ring Set	1
R08	*	Retaining Ring	1
R09		Spring	1
R10		Screw	1
R11	RS4TR12	Protection Cap	1
R12		Limit Ring	1
R13		Cylinder	1
R14		Screw	1
R15		Female Coupler	1
R16		O-ring	1
R17		Dust Cover	1
R18		Sealing Ring	1
N/S	RSRCPLR	Ram Coupler (incl R06, R15–R18)	1

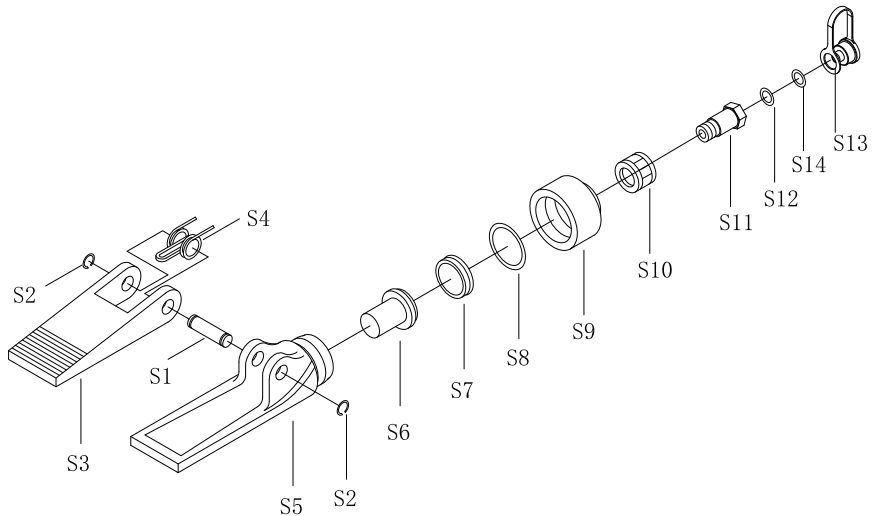


*Items identified by an asterisk are available in Ram Seal Kit, RS4TRSKA.

NOTE: Items which are not identified by a part number or with an asterisk are not available separately.

RSSPRANG - 4 Ton Spreader

Item #	Part #	Description	Qty
S1		Pin	1
S2		Circlip	1
S3		Movable Jaw	1
S4		Spring	1
S5		Fixed Jaw	1
S6		Piston	1
S7	*	Cup Seal	1
S8	*	O-ring	1
S9		End Cap	1
S10		Nut	1
S11		Coupler	1
S12		O-ring	1
S13		Dust Cover	1
S14		Sealing ring	1
N/S	RSSPRCPLR	Spreader Coupler (incl S10 – S14)	1



*Items identified by an asterisk are available in Spreader Seal Kit, RSSPRASK.

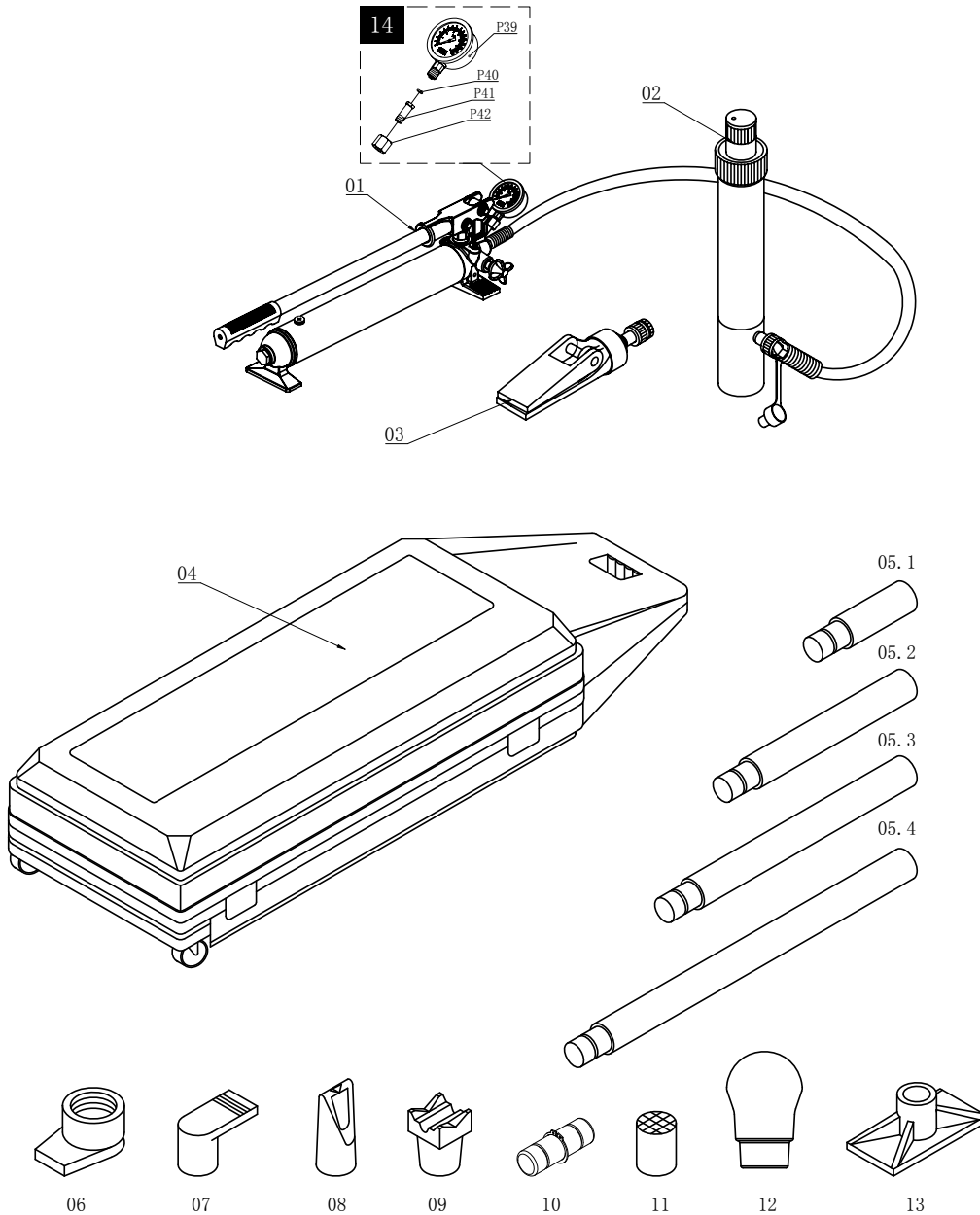
NOTE: Items which are not identified by a part number or with an asterisk are not available separately.



CSEPR4TA AND CSEPR10TA

4 Ton and 10 Ton Portable Repair Kit

10 Ton Portable Repair Kit - Parts



Item #	Part #	Description	Qty
01	RS10TPANG	Pump w/Hose, Neon Green	1
	RSHS	Hose	1
02	RS10TRNG	Ram, Neon Green	1
03	RSSPRANG	Spreader, Neon Green	1
04	RS10T01	Case	1
	RS10T01WH	Wheel for Case	2
5.1	RS10T02.1NG	3.23" (82mm) Extension, Neon Green	1
5.2	RS10T02.2NG	5.04" (128mm) Extension, Neon Green	1
5.3	RS10T02.3NG	8.50" (216mm) Extension, Neon Green	1
5.4	RS10T02.4NG	16.54" (420mm) Extension, Neon Green	1

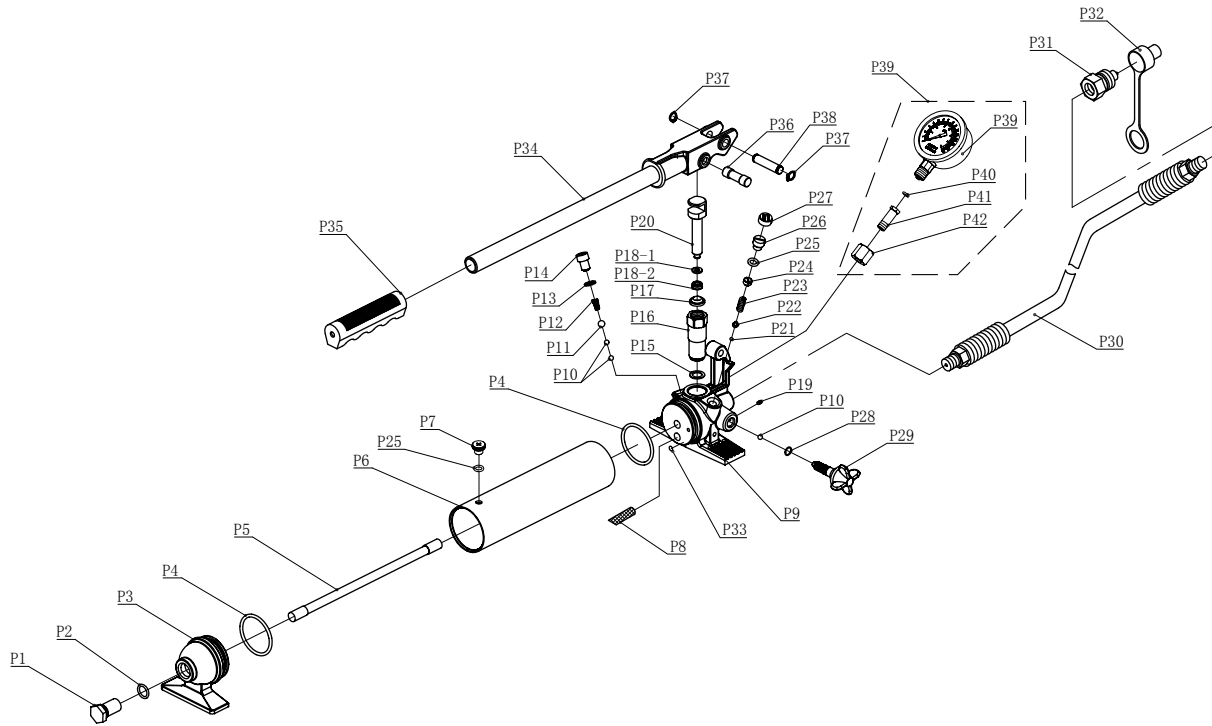
Item #	Part #	Description	Qty
06	RS10T04ANG	Ram Toe, Neon Green	1
07	RS10T05NG	Plunger Toe, Neon Green	1
08	RS10T06NG	Wedge Head, Neon Green	1
09	RS10T07NG	V-Base, Neon Green	1
10	RS10T08	Male Connector	1
11	RS10T09NG	Serrated Saddle, Neon Green	1
12	RS10T10	Rubber Head	1
13	RS10T03NG	Flat Base, Neon Green	1
14	RSPGA	Pressure Gauge Assembly	1
N/S	RSCSEPR10TALK	Product Label Kit	1



CSEPR4TA AND CSEPR10TA

4 Ton and 10 Ton Portable Repair Kit

RS10TPANG - 10 Ton Pump



Item #	Part #	Description	Qty
P1		Screw	1
P2	*	O-ring	1
P3	RS10TPFNG	Pump Foot, Neon Green	1
P4	*	O-ring	2
P5		Tie Rod	1
P6		Reservoir	1
P7		Breather Screw	1
P8		Oil Filter	1
P9		Valve Block	1
P10	*	Ball	3
P11	*	Ball	1
P12	*	Spring	1
P13	*	Washer	1
P14		Plug Screw	1
P15	*	Copper Ring	1
P16	*	Piston Seat	1
P17	*	Anti-dust Ring	1
P18	*	Sealing Ring (incl 18-1 & 18-2)	1
P19		Screw	1
P20		Piston	1
P21	*	Ball	1

Item #	Part #	Description	Qty
P22	*	Ball Cup	1
P23	*	Spring	1
P24	*	Screw	1
P25	*	O-ring	2
P26		Screw	1
P27		Screw Cap	1
P28	*	O-ring	1
P29	RSP15NG	Release Valve, Neon Green	1
P30	RSHS	Hose	1
P31	RSP17	Male Coupler	1
P32	RSP18	Hose Dust Cover	1
P33		Magnet	1
P34	RS10THNDLNG	Handle, Neon Green	1
P35		Handle Sleeve	1
P36		Pin	1
P37		Sealing Ring	2
P38		Pin	1
P39	RSPGA	Pressure Gauge (incl P39 - P42)	1
P40		O-ring	1
P41		Gauge Fitting	1
P42		Nut	1

*Items identified by an asterisk are available in pump seal kit, RS10TPSKA.

NOTE: Items which are not identified by a part number or with an asterisk are not available separately.

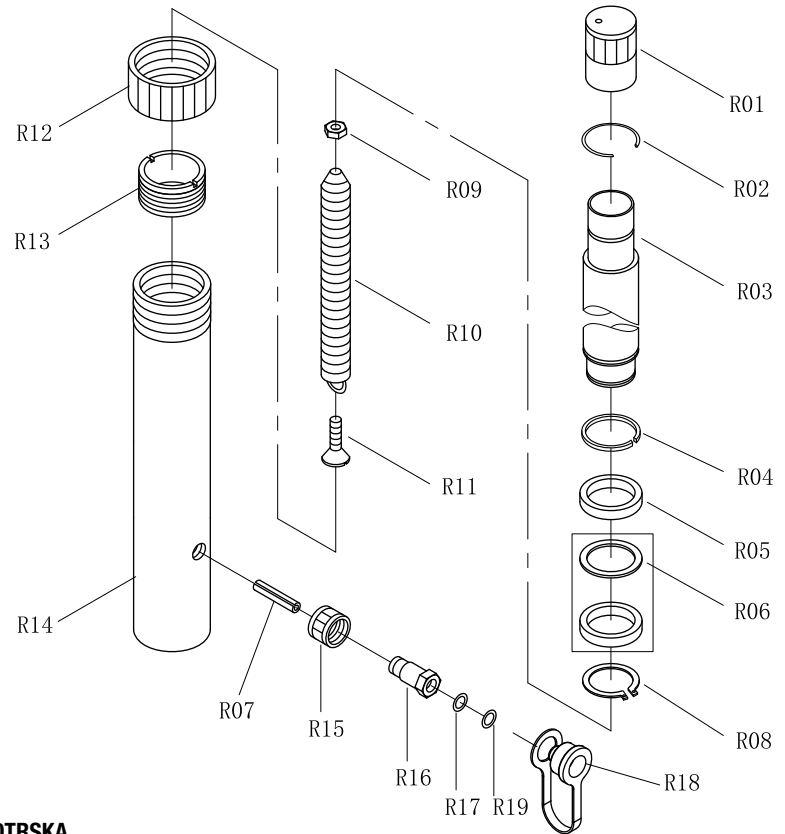


CSEPR4TA AND CSEPR10TA

4 Ton and 10 Ton Portable Repair Kit

RS10TRNG - 10 Ton Ram

Item#	Part#	Description	Qty
R01	RS10TR01	Cover	1
R02		Circlip	1
R03		Piston Rod	1
R04	*	Circlip	1
R05	*	Bushing	1
R06	*	Sealing Ring Set	1
R07		Pin	1
R08	*	Circlip	1
R09		Nut	1
R10		Spring	1
R11	RS10TR12	Screw	1
R12		Protection Cap	1
R13		Limit Ring	1
R14		Cylinder	1
R15		Nut	1
R16		Female Coupler	1
R17		O-ring	1
R18		Dust Cap	1
R19		Sealing Ring	1
N/S	RSRCPLR	Ram Coupler (incl R15–R19)	1

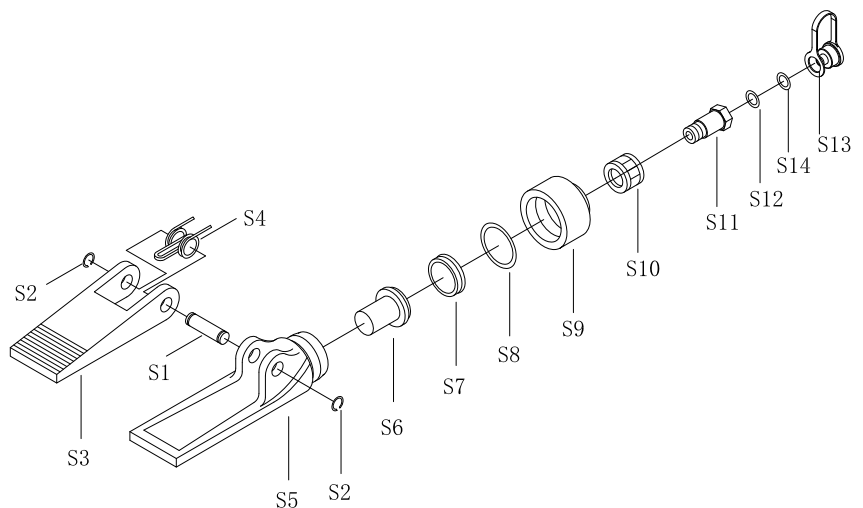


*Items identified by an asterisk are available in Ram Seal Kit, RS10TRSKA.

NOTE: Items which are not identified by a part number or with an asterisk are not available separately.

RSSPRANG - 10 Ton Spreader

Item#	Part#	Description	Qty
S1		Pin	1
S2		Circlip	1
S3		Movable Jaw	1
S4		Spring	1
S5		Fixed Jaw	1
S6		Piston	1
S7	*	Cup Seal	1
S8	*	O-ring	1
S9		End Cap	1
S10		Nut	1
S11		Coupler	1
S12		O-ring	1
S13		Dust Cover	1
S14		Sealing ring	1
N/S	RSSPRCPLR	Spreader Coupler (incl S10 – S14)	1



*Items identified by an asterisk are available in Spreader Seal Kit, RSSPRASK.

NOTE: Items which are not identified by a part number or with an asterisk are not available separately.