



# CSEES1KM

750 LB.  
ENGINE STAND

## OPERATING MANUAL • WARNING INFORMATION • PARTS LIST



### SPECIFICATIONS

Maximum Capacity .....	750 Lbs.
Overall Length .....	36.2"
Overall Width .....	26.8"
Overall Height.....	33.7"
Net Weight .....	56 Lbs.
Shipping Weight.....	60.5 Lbs.

Manufactured to comply with the  
ASME PASE-2019 Safety Standard

Copyright © Professional Tool Products, 2020  
All rights reserved



# CSEES1KM

## 750 LB. ENGINE STAND

### WARNING INFORMATION



This is the safety alert symbol. It is used to alert you to potential personal injury hazards. Obey all safety messages that follow this symbol to avoid possible injury or death.

#### **WARNING**

**WARNING:** Indicates a hazardous situation which, if not avoided, could result in death or serious injury.



### IMPORTANT: READ THESE INSTRUCTIONS BEFORE OPERATING

BEFORE USING THIS DEVICE, READ THIS MANUAL COMPLETELY AND THOROUGHLY, UNDERSTAND ITS OPERATING PROCEDURES, SAFETY WARNINGS AND MAINTENANCE REQUIREMENTS.

It is the responsibility of the owner to make sure all personnel read this manual prior to using the device. It is also the responsibility of the device owner to keep this manual intact and in a convenient location for all to see and read. If the manual or product labels are lost or not legible, contact Cornwell for replacements. If the operator is not fluent in English, the product and safety instructions shall be read to and discussed with the operator in the operator's native language by the purchaser/owner or his designee, making sure that the operator comprehends its contents.




### THE NATURE OF HAZARDOUS SITUATIONS


#### **WARNING**

The use of portable automotive supporting devices are subject to certain hazards that cannot be prevented by mechanical means, but only by the exercise of intelligence, care, and common sense. It is therefore essential to have owners and personnel involved in the use and operation of the equipment who are careful, competent, trained, and qualified in the safe operation of the equipment and its proper use. Examples of hazards are dropping, tipping or slipping of loads caused primarily by improperly securing loads, overloading, off-centered loads, use on other than hard level surfaces, and using equipment for a purpose for which it was not designed.

### METHODS TO AVOID HAZARDOUS SITUATIONS

#### **WARNING**

-  • Read, study, understand and follow all instructions before operating this device.
-  • Inspect the engine stand before each use. Do not use if damaged, altered, modified, in poor condition, or has loose or missing components. Take corrective action before using the engine stand.
- Wear eye protection that meets ANSI Z87.1 and OSHA standards, users and bystanders.
- Do not use beyond rated capacity.
- Use only on a hard level surface capable of supporting the load.
-  • Make sure all mounting hardware is securely tightened and setup is stable before rotating engine.
- Always use high strength SAE Grade 8 bolts for mounting engine to mounting head fingers.
- Make sure widest set of mounting head fingers are nearest the ground when mounting engine to stand.
- Assure the load is centered, balanced and secured to the mounting head and fingers. The engine's weight should be balanced within 1" of the mounting head's rotational axis.
- Adequately support the vehicle before starting repairs.
- Never loosen mounting head bolts or engine mounting bolts unless engine is supported by a crane or hoist.
- Only attachments and/or adapters supplied by Cornwell shall be used.
- Do not use stand or dolly to transport engine.
- Do not crawl under engine or place any part of your body under engine at any time.
- Refer to engine manufacturer's service manual for proper lifting points, mounting points and bolt sizes. Mounting bolts should be tightened to the required torque amount to maintain load.
- Do not use (or modify) this product for any other purpose than that for which it was designed without consulting the manufacturer's authorized representative.
- Failure to heed these warnings may result in serious or fatal personal injury and/or property damage.

 **WARNING:** This product can expose you to chemicals including nickel, which is known to the State of California to cause cancer and birth defects or other reproductive harm. For more information go to [www.P65Warnings.ca.gov](http://www.P65Warnings.ca.gov).

### CONSEQUENCES OF NOT AVOIDING HAZARDOUS SITUATIONS

#### **WARNING**

Failure to read this manual completely and thoroughly, understand its OPERATING INSTRUCTIONS, SAFETY WARNINGS, MAINTENANCE INSTRUCTIONS and not comply with them, and neglecting the METHODS TO AVOID HAZARDOUS SITUATIONS could cause accidents resulting in serious or fatal personal injury and/or property damage.



# CSEES1KM

## 750 LB. ENGINE STAND

### SETUP

Please refer to the exploded view drawing on page 5 in this manual in order to identify parts:

1. Insert the middle beam (#11) in the main post (#14) all the way until the ends of the square tubes are flush with each other and secure them with a 3/4" long bolt (#10).
2. Secure the back leg (#3) to the angle iron portion of the main post (#14) and secure them together with the 2-3/4" long bolts (#9), flat washers (#6), lock washers (#7) and nuts (#8).
3. Secure the front leg to the angle iron portion of the middle beam (#11) with the 2-3/4" long bolts (#9), flat washers (#6), lock washers (#7) and nuts (#8).
4. Insert the two 3-1/2" diameter wheels (#1) into the bottom of the back leg (#3) and secure them to the leg with bolt (#2), washers (#5) and nuts (#4).
5. Insert the two 3-1/2" caster assembly (#13) into the bottom of the front leg (#12) and secure them to the leg with bolt (#2), washers (#5) and nuts (#4).
6. Install the tube section of the head mounting plate (#18) into the tube at the top of the main post (#14) and secure them together by inserting the lock pin (#15) in the holes that line up between the two tubes.
7. Push one of the handle grips (#16) on the handle (#17) and insert the handle through the cross hole at the end of the head mounting plate (#18). Now push on the remaining handle grip (#16) on the other end of the handle (#17).
8. Attach the four fingers (#22) to the head mounting plate (#18) with the 3" long bolts (#19), flat washers (#21), lock washers (#20) and nuts (#23).

### OPERATION



This is the safety alert symbol used for the **OPERATING INSTRUCTIONS** section of this manual to alert you to potential personal injury hazards. Obey all instructions to avoid possible injury or death. **IMPORTANT:** Before attempting to raise any vehicle, check vehicle service manual for recommended lifting surfaces.

1. Consult the vehicle or engine manufacturer for service manuals and/or technical bulletins that provide information on suggested engine mounting tips, proper size and type mounting bolts and the engine's center of balance. The engine's center of balance will have to be aligned with the rotational axis of the engine stand's mounting head.
2. Drain oil and coolant and remove clutch bell housing and flywheel from engine before mounting. Attach an engine lifting bar or sling to the engine and secure the bar or sling to a shop crane or hoist. Slowly lift the engine from its compartment, making sure no other vehicle components, wires or hoses obstruct the free movement of the engine. Raise the engine high enough so its center of balance is close to the rotational axis of the stand's mounting head.
3. Make sure the four mounting head fingers are loosely connected to the mounting head plate. Secure the four mounting head fingers to the bell housing end of the engine with the appropriate bolts and washers. Reposition the mounting head, fingers and engine so the engine's center of balance is within one inch of the mounting head's rotational axis. Tighten all bolts to a sufficient torque requirement that prevents any slippage.
4. Slowly lower the crane or hoist so the engine stand supports the full weight of the engine. To check engine balance and secure setup of the engine to the stand, slowly rotate the engine by turning the handle. If balance or setup are not stable, rotate the engine to its original position, raise the crane or hoist so the weight of the engine is removed from the stand, and make the correct adjustments. After adjustments are made, tighten all bolts. This adjustment procedure may have to be duplicated several times until correct. After the setup is balanced and secure, the lifting bar or sling can be removed from crane or hoist.
5. To remove the engine from the stand, connect the lifting bar or sling to the crane or hoist and raise the engine high enough to take the weight off the stand. Carefully remove the bolts that connect the four mounting fingers to the engine. Be aware there will be a slight movement of the stand as total engine weight is transferred to the crane or hoist.

### PREVENTATIVE MAINTENANCE



This is the safety alert symbol used for the **PREVENTATIVE MAINTENANCE** section of this manual to alert you to potential personal injury hazards. Obey all instructions to avoid possible injury or death.

1. Always store the engine stand in a well protected area where it will not be exposed to inclement weather, corrosive vapors, abrasive dust, or any other harmful elements. The stand must be cleaned of water, snow, sand, grit, oil, grease or other foreign matter before using.
2. Lubricate the wheels, casters, zerk fittings, gear and rotating shaft with a general purpose grease.
3. Every stand owner is responsible for keeping the device labels clean and readable. Use a mild soap solution to wash external surfaces of the device. Contact Cornwell Tools for a replacement label if the device's label is not readable.

### INSPECTION

Visual inspection should be made before each use of the engine stand, checking for damaged, loose or missing parts. Each engine stand must be inspected by a manufacturer's repair facility immediately, if subjected to an abnormal load or shock. Any stand which appears to be damaged in any way, is found to be badly worn, or operates abnormally **MUST BE REMOVED FROM SERVICE** until necessary repairs are made by a manufacturer's authorized repair facility. It is recommended that an annual inspection of the stand be made by a manufacturer's authorized repair facility and that any defective parts, decals or warning labels be replaced with manufacturer's specified parts. A list of authorized repair facilities is available from the manufacturer.



# **CSEES1KM**

## **750 LB. ENGINE STAND**

---

### **WARRANTY COVERAGE**

Cornwell Quality Tools Company ("Cornwell") warrants this product against defects in material and workmanship for a period of TWO (2) YEAR from the date of original retail purchase. Subject to the conditions and limitations set forth below, Cornwell will, at its option, either repair or replace any part of the product(s) that proves defective by reason of improper workmanship or materials.

This warranty does not cover any damage to this product that results from accident, abuse, misuse, natural or personal disaster, or any unauthorized disassembly, repair, or modification. Repairs, disassembly and modification are only authorized to be made by Cornwell or a Cornwell Authorized Warranty Center.

### **WARRANTY SERVICE**

In order to have your tool repaired, return the tool to any Cornwell Authorized Warranty Center, freight prepaid. Please include a copy of your proof of purchase and a brief description of the problem. The tool will be inspected and if any part or parts are found to be defective in material or workmanship, they will be repaired free of charge, and the repaired tool will be returned to you freight prepaid.

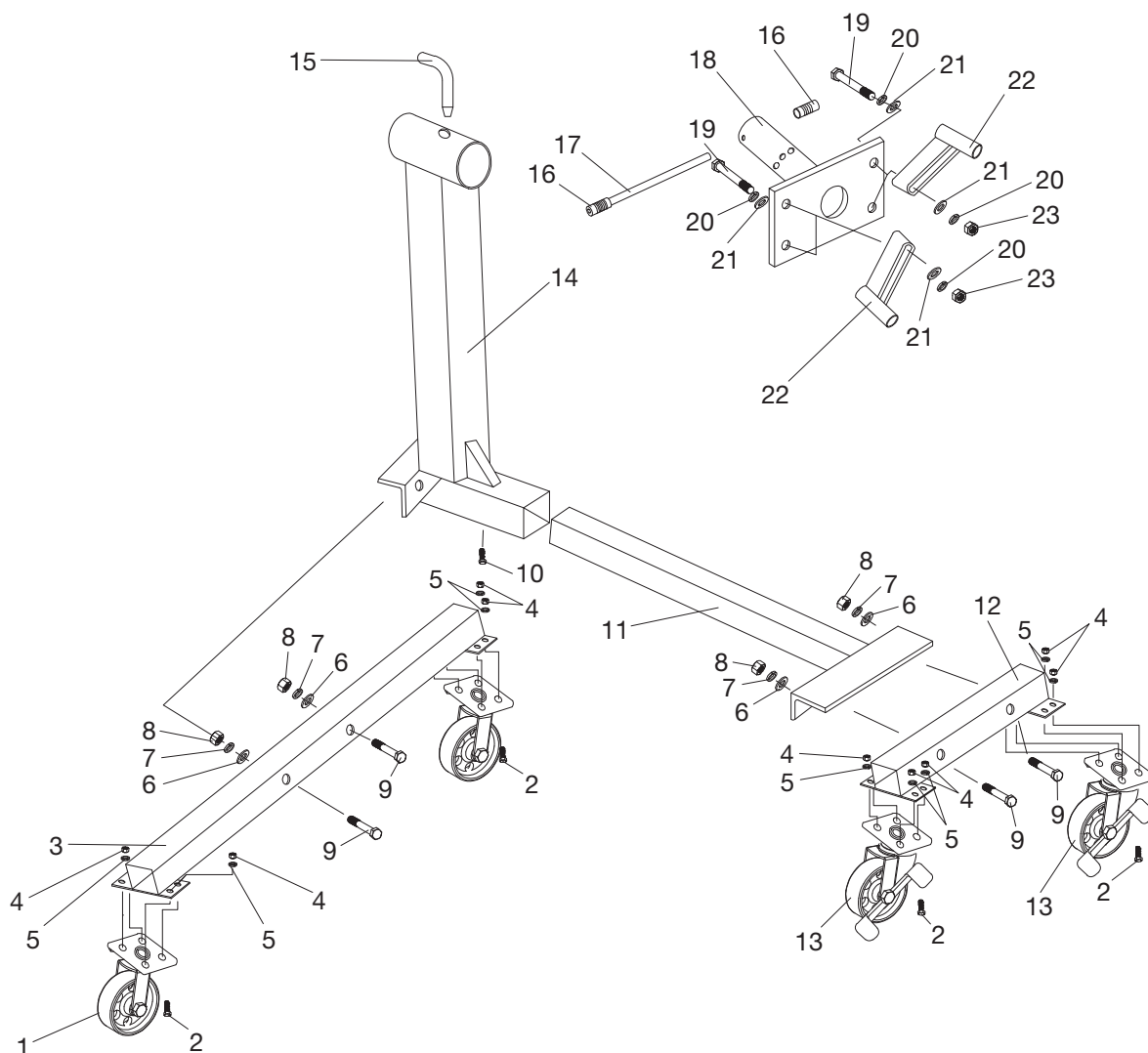
### **EXCLUSIONS AND LIMITATIONS**

THIS WARRANTY AND THE REMEDIES SET FORTH ABOVE ARE EXCLUSIVE AND IN LIEU OF ALL OTHER WARRANTIES, REMEDIES AND CONDITIONS, WHETHER ORAL OR WRITTEN, EXPRESS OR IMPLIED. CORNWELL SPECIFICALLY DISCLAIMS ANY AND ALL IMPLIED WARRANTIES, INCLUDING, TO THE EXTENT PERMITTED BY APPLICABLE LAW, ANY WARRANTIES OF MERCHANTABILITY AND FITNESS FOR A PARTICULAR PURPOSE. IF CORNWELL CANNOT LAWFULLY DISCLAIM IMPLIED WARRANTIES UNDER THIS LIMITED WARRANTY, ALL SUCH IMPLIED WARRANTIES ARE LIMITED IN DURATION TO THE DURATION OF THIS WARRANTY.

IN NO EVENT SHALL CORNWELL BE LIABLE TO THE PURCHASER OR TO THE USER OF A CORNWELL PRODUCT FOR ANY SPECIAL, INCIDENTAL OR CONSEQUENTIAL DAMAGES BASED UPON BREACH OF WARRANTY, BREACH OF CONTRACT, NEGLIGENCE, TORT, OR ANY OTHER LEGAL THEORY. SUCH DAMAGES INCLUDE, WITHOUT LIMITATION, EXPENSES, LOST REVENUES, LOST SAVINGS, LOST PROFITS, OR ANY OTHER INCIDENTAL OR CONSEQUENTIAL DAMAGES ARISING FROM THE PURCHASE, USE OR INABILITY TO USE THE CORNWELL PRODUCT.

Some states do not allow the exclusion or limitation of incidental or consequential damages or exclusions or limitation on the duration of implied warranties or conditions, so the above limitations or exclusions may not apply to you. This warranty gives you specific legal rights, and you may also have other rights that vary by state.

Repair kits and replacement parts are available for many Cornwell products, regardless of whether or not the product is still covered by a warranty plan.



Item No.	Part No.	Description	Qty.
1	RS75002	3.5" Caster Assembly (incl. #2)	2
2	*	Bolt (M8) (incl. with #1 and #13)	16
3	*	Back Leg	1
4	*	Nut (M8)	16
5	*	Lock Washer (M8)	16
6	*	Flat Washer (M10)	4
7	*	Lock Washer (M10)	4
8	*	Nut (M10)	4
9	*	Bolt (M10)	4
10	*	Bolt (M12)	1
11	*	Middle Beam	1
12	*	Front Leg	1

Item No.	Part No.	Description	Qty.
13	RS75005	3.5" Locking Caster Assembly (incl. #2)	2
14	*	Main Post	1
15	RS75006	Lock Pin (12)	1
16	*	Hand Grip (incl. #17)	2
17	RS75010BK	Handle - Black (incl. with #16)	1
18	RS75011BL	Head Mounting Plate - Blue	1
19	*	Bolt (M14)	4
20	*	Lock Washer (M14)	8
21	*	Flat Washer (M14)	8
22	RS75012BK	Finger - Black	4
23	*	Nut (M14)	4
	RSCSEES1KMPLK	Product Label Kit (not shown)	1

All bolts and pins need to be assembled loosely to fit properly and then tightened before use.  
 \* Available in Hardware Kit, RS750HK. Only items identified by part number are available for purchase.