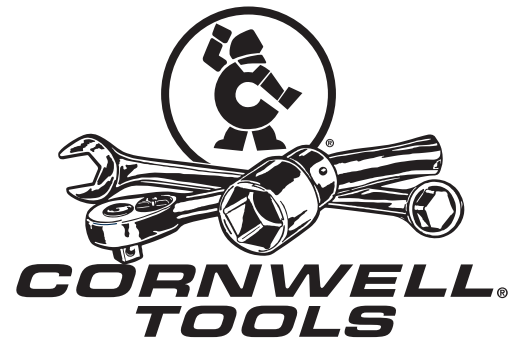


- *Operating Manual*
- *Warning Information*
- *Parts List*



Meets or exceeds ASME PALD-1997 standards for performance & safety.

!WARNING

THIS UNIT IS AN ACCESSORY STAND ONLY AND IS NOT DESIGNED OR INTENDED TO SUPPORT VEHICLES.

DO NOT OVERLOAD STAND. OVERLOADING CAN CAUSE DAMAGE TO, OR FAILURE OF, THE STAND.

PLACE LOAD IN THE CENTER OF THE SADDLE ONLY. LOADED STAND MUST BE STABLE BEFORE PROCEEDING WITH WORK.

A VISUAL INSPECTION SHOULD BE MADE BEFORE EACH USE OF THE STAND, CHECKING FOR CRACKED, DAMAGED, LOOSE OR MISSING PARTS.

USE STANDS ON HARD LEVEL SURFACE CAPABLE OF SUSTAINING THE LOAD. USE ON OTHER THAN HARD LEVEL SURFACES MAY RESULT IN POSSIBLE LOSS OF LOAD.

NO ALTERATIONS TO THE STAND SHALL BE MADE.

READ, STUDY AND UNDERSTAND THE INSTRUCTION MANUAL PACKED WITH THIS STAND BEFORE USING STAND.

FAILURE TO HEED THESE WARNINGS MAY RESULT IN LOSS OF LOAD, DAMAGE TO STAND, AND/OR FAILURE RESULTING IN PROPERTY DAMAGE, PERSONAL OR FATAL INJURY.

THIS OPERATING MANUAL CONTAINS IMPORTANT SAFETY INFORMATION.

READ CAREFULLY AND UNDERSTAND ALL INFORMATION BEFORE OPERATING THIS TOOL.

SAVE THIS MANUAL FOR FUTURE USE.

CSE-4000TS

4000 Lb.

Tripod Stand

CSE-4000TS SPECIFICATIONS

Capacity	4000 Lbs.
Low Height	68"
Raised Height	76"
Base	24"
Shipping Weight	35 Lbs.

OWNER/USER RESPONSIBILITY

The owner and/or user must have a thorough understanding of the manufacturer's operating instructions and warnings before using this underhoist stand. Personnel involved in the use and operation of equipment shall be careful, competent, trained, and qualified in the safe operation of the equipment and its proper use when servicing motor vehicles and their components. Warning information should be emphasized and understood. If the operator is not fluent in English, the manufacturer's instructions and warnings shall be read to and discussed with the operator in the operator's native language by the purchaser/owner, making sure that the operator comprehends its contents.

Owner and/or user must study and maintain for future reference the manufacturer's instructions. Owner and/or user is responsible for keeping all warning labels and instruction manuals legible and intact. Replacement labels and literature are available from the manufacturer.

INSPECTION

Visual inspection should be made before each use of the underhoist stand, checking for damaged, loose or missing parts. Each stand must be inspected by a manufacturer's repair facility immediately, if accidentally subjected to an abnormal load or shock. Any stand which appears to be damaged in any way, found to be badly worn, or operates abnormally **MUST BE REMOVED FROM SERVICE** until necessary repairs are made by a manufacturer's authorized repair facility. It is recommended that an annual inspection of the stand be made by a manufacturer's authorized repair facility and that any defective parts, decals or warning labels be replaced with manufacturer's specified parts. A list of authorized repair facilities is available from the manufacturer.

ASSEMBLY INSTRUCTIONS

1. Attach legs (#4) to guide weldment (#3) using (3) M10 hex bolts (#13), (3) washers (#14) and (3) M10 hex nuts (#15). **Note:** Do not tighten securely until the small and large braces have been attached.
2. Attach small braces (#5) to legs (#4) using (6) M8 HHCS (#8) and (6) M8 hex nut (#9). **Note:** Do not tighten securely until large braces have been attached.
3. Attach large braces (#6) to legs (#4) using (6) M8 HHCS (#8) and (6) M8 hex nut (#9). **Note:** Now securely tighten all nuts and bolts.
4. Place bearing assembly (#2) on guide weldment (#3) and screw handle (#10) on worm shaft (#16). Then, place handle grips (#11) onto ends of handle (#10).
5. Insert the 6mm roll pin (#7) into the hole located near the bottom of the worm shaft (#16).
6. Set saddle (#1) on top of worm shaft (#16) and screw M8 hex bolt (#12) through saddle to secure on worm shaft.

OPERATING INSTRUCTIONS

To Raise:

Turn adjusting handle clockwise until saddle contacts load. Continue turning handle to raise load to required height.

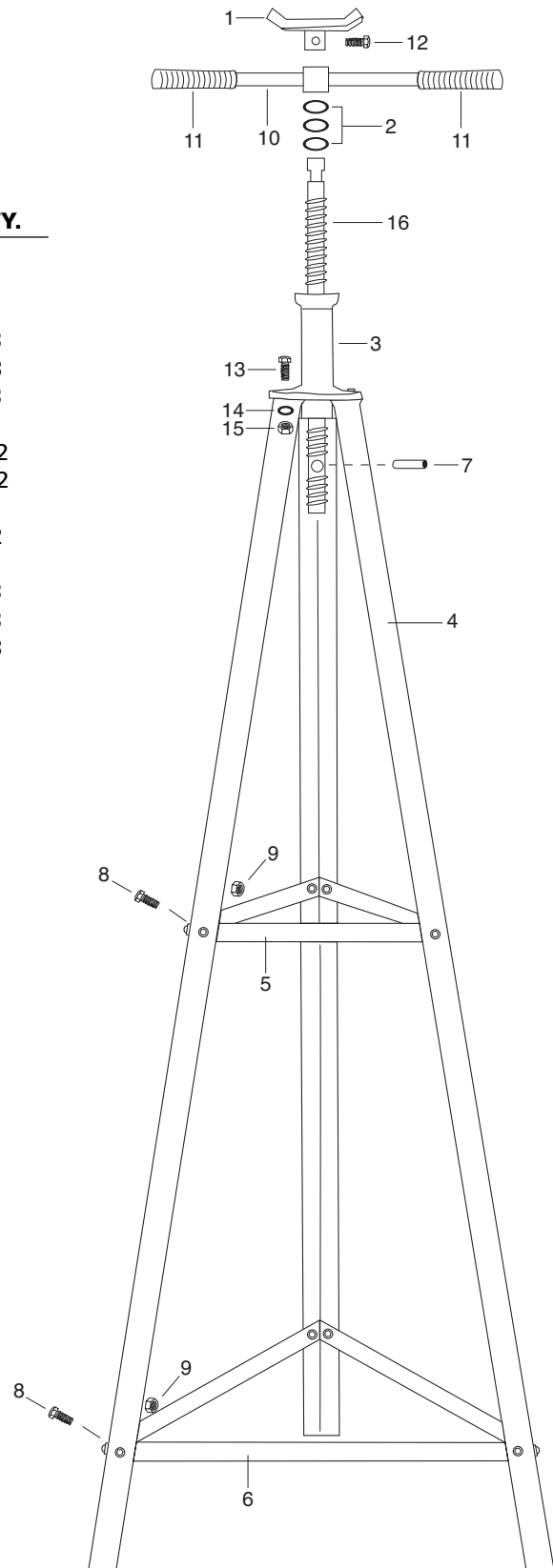
To Lower:

Turn adjusting handle counterclockwise.

PARTS BREAKDOWN - CSE-4000TS

ITEM NO.	DESCRIPTION	PART NO.	QTY.
1	Saddle Assembly (incl. 1, 7, 12 & 16)	RS6808BD01A	1
2	Bearing Assembly	RS6808BD02	1
3	Guide Weldment		1
4	Leg		3
5	Small Brace		3
6	Large Brace		3
7	6mm Roll Pin		1
8	M8 HHCS		12
9	M8 Hex Nut		12
10	Handle (including grips)	RS6809A08	1
11	Handle Grip	RS6809A03	2
12	Hex Bolt M8		1
13	Hex Bolt M10		3
14	Washer 10		3
15	Hex Nut M10		3
16	Worm Shaft		1

Note: Only items with part numbers are available for purchase.



WARRANTY COVERAGE

Cornwell Quality Tools Company ("Cornwell") warrants against defects in material and workmanship on this product for a period of TWO (2) YEARS from the date of original retail purchase. Subject to the conditions and limitations set forth below, Cornwell will, at its option, either repair or replace any part of the product(s) that proves defective by reason of improper workmanship or materials.

This warranty does not cover any damage to this product that results from accident, abuse, misuse, natural or personal disaster, or any unauthorized disassembly, repair, or modification. Repairs, disassembly and modification are only authorized to be made by Cornwell or a warranty service center approved by Cornwell.

WARRANTY SERVICE

To obtain warranty service, contact your Cornwell dealer.

EXCLUSIONS AND LIMITATIONS

THIS WARRANTY AND THE REMEDIES SET FORTH ABOVE ARE EXCLUSIVE AND IN LIEU OF ALL OTHER WARRANTIES, REMEDIES AND CONDITIONS, WHETHER ORAL OR WRITTEN, EXPRESS OR IMPLIED. CORNWELL SPECIFICALLY DISCLAIMS ANY AND ALL IMPLIED WARRANTIES, INCLUDING, TO THE EXTENT PERMITTED BY APPLICABLE LAW, ANY WARRANTIES OF MERCHANTABILITY AND FITNESS FOR A PARTICULAR PURPOSE. IF CORNWELL CANNOT LAWFULLY DISCLAIM IMPLIED WARRANTIES UNDER THIS LIMITED WARRANTY, ALL SUCH IMPLIED WARRANTIES ARE LIMITED IN DURATION TO THE DURATION OF THIS WARRANTY.

IN NO EVENT SHALL CORNWELL BE LIABLE TO THE PURCHASER OR TO THE USER OF A CORNWELL PRODUCT FOR ANY SPECIAL, INCIDENTAL OR CONSEQUENTIAL DAMAGES BASED UPON BREACH OF WARRANTY, BREACH OF CONTRACT, NEGLIGENCE, TORT, OR ANY OTHER LEGAL THEORY. SUCH DAMAGES INCLUDE, WITHOUT LIMITATION, EXPENSES, LOST REVENUES, LOST SAVINGS, LOST PROFITS, OR ANY OTHER INCIDENTAL OR CONSEQUENTIAL DAMAGES ARISING FROM THE PURCHASE, USE OR INABILITY TO USE THE CORNWELL PRODUCT.

Some states do not allow the exclusion or limitation of incidental or consequential damages or exclusions or limitation on the duration of implied warranties or conditions, so the above limitations or exclusions may not apply to you. This warranty gives you specific legal rights, and you may also have other rights that vary by state.

Repair kits and replacement parts are available for many Cornwell products, regardless of whether or not the product is still covered by a warranty plan.

Cornwell Quality Tools Company
667 Seville Road • Wadsworth, OH 44281-1094

