

- **Operating Manual**
- **Warning Information**
- **Parts List**



Meets or exceeds ASME PALD-1997 standards for performance & safety.

!WARNING



DO NOT OVERLOAD. OVERLOADING CAN CAUSE DAMAGE TO, OR FAILURE OF THE STAND.

THIS STAND IS DESIGNED FOR USE ONLY ON HARD LEVEL SURFACES CAPABLE OF SUPPORTING THE LOAD. USE ON OTHER THAN HARD LEVEL SURFACES CAN RESULT IN STAND INSTABILITY AND TIPPING OF LOAD.

LOCK THE MOUNTING-PLATE ROTATING MECHANISM BEFORE APPLYING A LOAD. RELEASE ROTATIONAL LOCKING DEVICE SLOWLY AND CAREFULLY.

ALWAYS USE HIGH STRENGTH SAE GRADE 8 BOLTS FOR ENGINE MOUNTING BOLTS.

MAKE SURE WIDEST SET OF MOUNTING HEAD FINGERS ARE NEAREST THE GROUND WHEN MOUNTING AN ENGINE TO THE STAND.

ALWAYS BE SURE THAT THE LOAD IS CENTERED AND SECURED TO THE MOUNTING PLATE. OFF-CENTER LOADS MAY MAKE THE LOAD AND HANDLE ROTATE IN EITHER DIRECTION WHEN THE ROTATIONAL LOCKING DEVICE IS RELEASED.

NEVER LOOSEN MOUNTING BOLTS UNLESS ENGINE IS SUPPORTED BY A CRANE OR HOIST.

DO NOT USE STAND TO DOLLY OR TRANSPORT ENGINES.

NO ALTERATIONS TO THE STAND OR ADAPTERS SHALL BE MADE.

DO NOT ROTATE MOTOR UNLESS REAR LEGS ARE SECURED FROM TIPPING.

READ, STUDY AND UNDERSTAND ALL INSTRUCTIONS BEFORE OPERATING.

FAILURE TO HEED THESE WARNINGS MAY RESULT IN LOSS OF LOAD, DAMAGE TO STANDS, AND/OR FAILURE RESULTING IN PROPERTY DAMAGE, PERSONAL OR FATAL INJURY.



THIS OPERATING MANUAL CONTAINS IMPORTANT SAFETY INFORMATION.

READ CAREFULLY AND UNDERSTAND ALL INFORMATION BEFORE OPERATING THIS TOOL.

SAVE THIS MANUAL FOR FUTURE USE.

CSE-1250

1250 Lb.

Engine Stand

!WARNING

DO NOT CRAWL UNDER ENGINE OR PLACE ANY PART OF YOUR BODY UNDER ENGINE AT ANY TIME DURING MOUNTING OF ENGINE, USE OF STAND, OR REMOVAL OF ENGINE.

!WARNING

REFER TO ENGINE SERVICE MANUAL FOR CORRECT LIFTING POINTS, MOUNTING POINTS AND MOUNTING BOLTS! MOUNTING BOLTS SHOULD BE TORQUED AT APPROPRIATE AMOUNT TO MAINTAIN LOAD.

OWNER/USER RESPONSIBILITY

The owner and/or user must have an understanding of the manufacturer's operating instructions and warnings before using the engine stand. Personnel involved in the use and operation of equipment shall be careful, competent, trained, and qualified in the safe operation of the equipment and its proper use when servicing motor vehicles and their components. Warning information should be emphasized and understood. If the operator is not fluent in English, the manufacturer's instructions and warnings shall be read to and discussed with the operator in the operator's native language by the purchaser/owner, making sure that the operator comprehends its contents.

Owner and/or user must study and maintain for future reference the manufacturer's instructions and pertinent warning information. Owner and/or user is responsible for keeping all warning labels and instruction manuals legible and intact. Replacement labels and literature are available from the manufacturer.

ASSEMBLY INSTRUCTIONS

1. First, ensure shaft jacket (#19) is inside hub of both rear wheels (#5). Attach rear wheels (#5) to base legs (#3) using (2) 1/2" x 2-1/2" HHCS (#25), (2) 1/2" locking washer (#23) and (2) 1/2" hex nuts (#14). Then, attach front swivel casters (#4) to base legs (#3) using (4) 5/16" x 3/4" HHCS (#15) and (4) 5/16" washers (#16).
2. Attach base legs (#3) to base (#6) first using (4) 1/2" x 3-1/4" HHCS (#21), (4) 1/2" washers (#24) and (4) 1/2" hex nuts (#14). Now, secure by using (2) 1/2" x 1-1/4" HHCS (#22), (2) 1/2" washers (#24), and (2) 1/2" hex nuts (#14).
3. Attach post (#8) to base (#6) using (4) 1/2" x 3-1/4" HHCS (#21), (4) 1/2" washers (#24) and (4) 1/2" hex nuts (#14). Note: Do not tighten post securely until the straps have been attached to both the base and post.
4. Insert head (#20) into post (#8) and secure by threading (1) 1/2" x 1" HHCS (#11) into the threaded nut on top of post. Tighten so head will not rotate.
5. Attach bottom of straps (#7) to base (#6) using (2) 1/2" x 1-1/4" HHCS (#18), (2) 1/2" washers (#24) and (2) 1/2" hex nuts (#14). Then, attach top of straps (#7) to post (#8) using (1) 1/2" x 3-1/2" HHCS, (1) 1/2" washer (#24) and (1) 1/2" hex nut (14).
6. Attach two short fingers (#1) to head using (2) 1/2" x 3" HHCS (#12), (2) 1/2" USS thick washers (#13), (2) 1/2" 1/2" lock washers (#23), (2) 1/2" washers (#24) and (2) 1/2" hex nuts (#14). Now attach two long fingers (#2) using (2) 1/2" x 3" HHCS (#12), (2) 1/2" USS thick washers (#13), (2) 1/2" lock washers (#23), (2) 1/2" washers (#24) and (2) 1/2" hex nuts (#14).
7. Insert handle (#10) into hole at back of head (#20) and slide handle grips (#9) onto each end of handle.
8. Check all nuts and bolts for tightness before operating.

INSPECTION

Visual inspection should be made before each use of the engine stand. Any stand which appears to be damaged in any way, found to be badly worn, or operates abnormally **MUST BE REMOVED FROM SERVICE**. If the stand is accidentally subjected to an abnormal load or shock it must be inspected by a manufacturer's authorized repair facility immediately. It is recommended that an annual inspection of the stand be made by a manufacturer's authorized repair facility and that any defective parts, decals, or warning labels be replaced with manufacturer's specified parts. All repairs must be made by a factory authorized service center. A list of authorized repair facilities is available from the manufacturer.

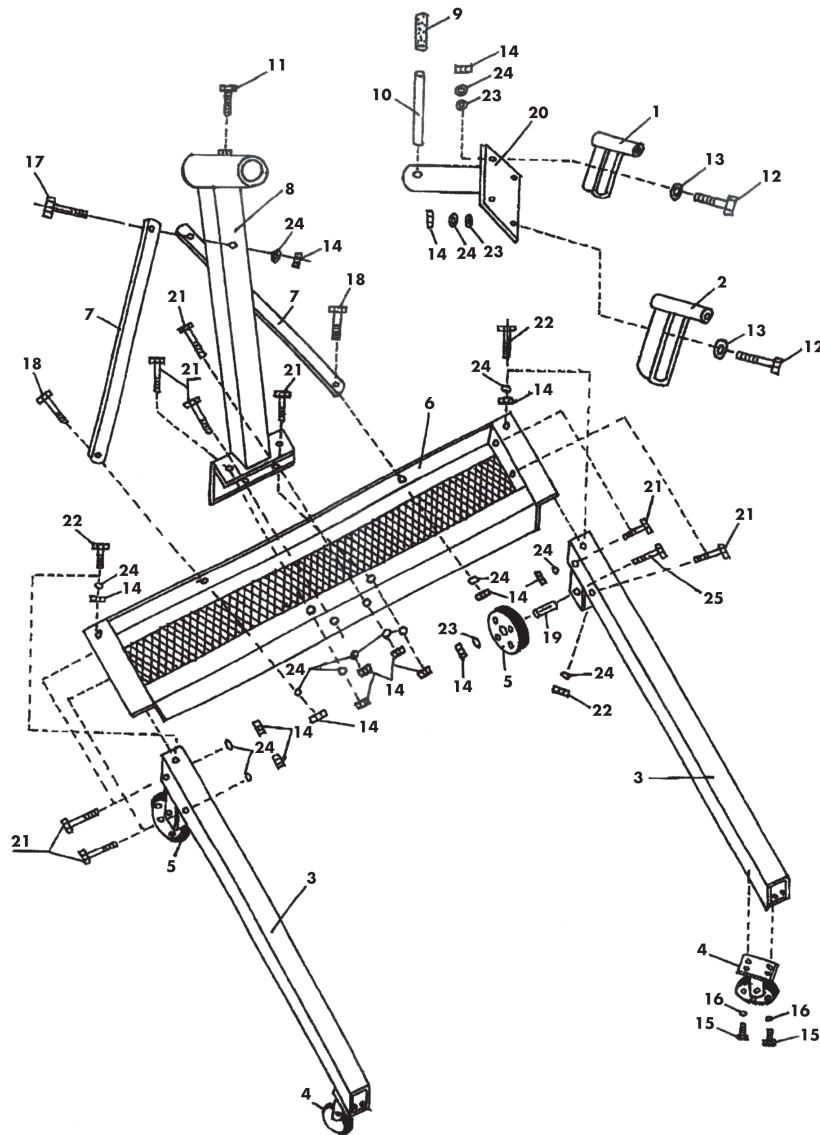
MAINTENANCE INSTRUCTIONS

Apply oil to support base wheels and casters. Apply chassis grease to mounting head hub. Rotate head to distribute grease.

OPERATING INSTRUCTIONS

Drain oil and coolant and remove flywheel from engine before mounting. Mount engine as directed in procedures which follow. Refer to engine service manuals and technical bulletins when mounting engines. Lift engine (block) with crane or hoist until even with head of engine stand. Bolt through adjustable fingers to back of block at bell housing mounting holes. Fasten securely to mounting plate. Slowly lower crane or hoist so that the engine stand supports full weight of engine. To check engine balance, carefully loosen hex bolt at back of rotating head, making sure stand is secured from tipping, and turn handle to rotate engine. If balance is not satisfactory, rotate engine to its original position and raise with crane or hoist just enough to take weight off the stand. Loosen bolts on adjustable fingers and realign so that weight is evenly distributed. Tighten all bolts securely and recheck balance. For safe and secure operation: do not rotate engine more than 90° for any one location of the positioning handle. In general, keep the handle within 45° of horizontal. Keep a firm hold on positioning handle while rotating engine. To remove an engine from stand, attach a crane or hoist and raise engine just enough to take engine weight off stand. Carefully remove bolts attaching fingers to engine. Be aware that there will be a slight movement of stand as total engine weight is transferred to crane.

PARTS BREAKDOWN - CSE-1250



Item No.	Part No.	Description	Qty.	Item No.	Part No.	Description	Qty.
1	RS500091	Short Finger	2	*15		5/16" x 3/4" HHCS	8
2	RS500092	Long Finger	2	*16		5/16" Lock Washer	8
3		Base Leg	2	*17		1/2" x 3-1/2" HHCS	1
4	RSSC350A	3-1/2" Swivel Caster	2	*18		1/2" x 1-1/4" HHCS	2
5	RSW400	4" Wheel	2	*19		Shaft Jacket	2
6		Base	1	20	RS530057	Head	1
7	RS530011BL2	Strap	2	*21		1/2" x 3-1/4" HHCS	8
8		Post	1	*22		1/2" x 1-1/4" HHCS	2
9		Handle Grip	2	*23		1/2" Lock Washer	6
10	RSESHDL	Handle (including grips)	1	*24		1/2" Washer	17
*11		1/2" x 1" HHCS	1	*25		1/2" x 2-1/2" HHCS	2
*12		1/2" x 3" HHCS	4				
*13		1/2" USS Thick Washer	4				
*14		1/2" Hex Nut	19				

* These parts available only in bolt kit #RS8258BK (includes Item #s: 11-19 and 21-25).
Only items identified by part number are available for purchase.

WARRANTY COVERAGE

Cornwell Quality Tools Company ("Cornwell") warrants against defects in material and workmanship on this product for a period of TWO (2) YEARS from the date of original retail purchase. Subject to the conditions and limitations set forth below, Cornwell will, at its option, either repair or replace any part of the product(s) that proves defective by reason of improper workmanship or materials.

This warranty does not cover any damage to this product that results from accident, abuse, misuse, natural or personal disaster, or any unauthorized disassembly, repair, or modification. Repairs, disassembly and modification are only authorized to be made by Cornwell or a warranty service center approved by Cornwell.

WARRANTY SERVICE

To obtain warranty service, contact your Cornwell dealer.

EXCLUSIONS AND LIMITATIONS

THIS WARRANTY AND THE REMEDIES SET FORTH ABOVE ARE EXCLUSIVE AND IN LIEU OF ALL OTHER WARRANTIES, REMEDIES AND CONDITIONS, WHETHER ORAL OR WRITTEN, EXPRESS OR IMPLIED. CORNWELL SPECIFICALLY DISCLAIMS ANY AND ALL IMPLIED WARRANTIES, INCLUDING, TO THE EXTENT PERMITTED BY APPLICABLE LAW, ANY WARRANTIES OF MERCHANTABILITY AND FITNESS FOR A PARTICULAR PURPOSE. IF CORNWELL CANNOT LAWFULLY DISCLAIM IMPLIED WARRANTIES UNDER THIS LIMITED WARRANTY, ALL SUCH IMPLIED WARRANTIES ARE LIMITED IN DURATION TO THE DURATION OF THIS WARRANTY.

IN NO EVENT SHALL CORNWELL BE LIABLE TO THE PURCHASER OR TO THE USER OF A CORNWELL PRODUCT FOR ANY SPECIAL, INCIDENTAL OR CONSEQUENTIAL DAMAGES BASED UPON BREACH OF WARRANTY, BREACH OF CONTRACT, NEGLIGENCE, TORT, OR ANY OTHER LEGAL THEORY. SUCH DAMAGES INCLUDE, WITHOUT LIMITATION, EXPENSES, LOST REVENUES, LOST SAVINGS, LOST PROFITS, OR ANY OTHER INCIDENTAL OR CONSEQUENTIAL DAMAGES ARISING FROM THE PURCHASE, USE OR INABILITY TO USE THE CORNWELL PRODUCT.

Some states do not allow the exclusion or limitation of incidental or consequential damages or exclusions or limitation on the duration of implied warranties or conditions, so the above limitations or exclusions may not apply to you. This warranty gives you specific legal rights, and you may also have other rights that vary by state.

Repair kits and replacement parts are available for many Cornwell products, regardless of whether or not the product is still covered by a warranty plan.

Cornwell Quality Tools Company
667 Seville Road • Wadsworth, OH 44281-1094

CSE-1250 SPECIFICATIONS

Capacity	1250 Lbs.
Height	33-1/2"
Length	33-1/4"
Width	33-1/2"
Shipping Weight	88 Lbs.

