



CSE1100

1,100 LBS. ENGINE SUPPORT BAR

OPERATING MANUAL • WARNING INFORMATION • PARTS LIST



SPECIFICATIONS

Capacity.....	1,100 Lbs.
Working Range.....	28.75" - 65.6"
Height Adjustment	0" - 8.06"
Chain Length.....	37.8"
Product Weight	40.1 Lbs.
Shipping Weight.....	44.1 Lbs.

Copyright © Professional Tool Products, 2019
All rights reserved
6/18/19

WARNING INFORMATION



This is the safety alert symbol. It is used to alert you to potential personal injury hazards. Obey all safety messages that follow this symbol to avoid possible injury or death.

⚠ WARNING

WARNING: Indicates a hazardous situation which, if not avoided, could result in death or serious injury.



IMPORTANT: READ THESE INSTRUCTIONS BEFORE OPERATING

BEFORE USING THIS DEVICE, READ THIS MANUAL COMPLETELY AND THOROUGHLY, UNDERSTAND ITS OPERATING PROCEDURES, SAFETY WARNINGS AND MAINTENANCE REQUIREMENTS.

It is the responsibility of the owner to make sure all personnel read this manual prior to using the device. It is also the responsibility of the device owner to keep this manual intact and in a convenient location for all to see and read. If the manual or product labels are lost or not legible, contact Cornwell Tools for replacements. If the operator is not fluent in English, the product and safety instructions shall be read to and discussed with the operator in the operator's native language by the purchaser/owner or his designee, making sure that the operator comprehends its contents.

THE NATURE OF HAZARDOUS SITUATIONS

⚠ WARNING

The use of portable automotive lifting and support devices is subject to certain hazards that cannot be prevented by mechanical means, but only by the exercise of intelligence, care, and common sense. It is therefore essential to have owners and personnel involved in the use and operation of the equipment who are careful, competent, trained, and qualified in the safe operation of the equipment and its proper use. Examples of hazards are dropping, tipping or slipping of loads caused primarily by improperly secured loads, overloading, off-centered loads, use on other than hard level surfaces, and using equipment for a purpose for which it was not designed.

METHODS TO AVOID HAZARDOUS SITUATIONS

⚠ WARNING



- Read, study, understand and follow all instructions before operating this device.



- Wear eye protection that meets ANSI Z87.1 and OSHA standard (users & bystanders)
- Inspect before each use. Do not use if damaged, altered, modified, in poor condition or has loose or missing components. Take corrective action before using.



- Do not exceed rated capacity.
- Do not exceed maximum width of 61".
- This product was not designed to lift an engine but rather support the engine when lifted by other means.
- Consult the vehicle manufacturer for the proper positioning and attachment of the product to the engine.
- Make sure the engine is properly and safely supported before removing the lifting device from the engine.
- **Stay clear of lifted load. Never crawl under the suspended load for any reason.**
- Make sure the weight of the tool and engine can be supported by that part of the vehicle the tool is resting.
- Do not use this tool for any purpose other than for which it was designed.
- No alterations shall be made to this device.
- Failure to heed these warnings may result in personal injury and/or property damage.



WARNING: This product can expose you to chemicals including nickel, which is known to the State of California to cause cancer and birth defects or other reproductive harm. For more information go to www.P65Warnings.ca.gov.

CONSEQUENCES OF NOT AVOIDING HAZARDOUS SITUATIONS

⚠ WARNING

Failure to read this manual completely and thoroughly, failure to understand its OPERATING INSTRUCTIONS, SAFETY WARNINGS, MAINTENANCE INSTRUCTIONS and comply with them, and failure to comply with the METHODS TO AVOID HAZARDOUS SITUATIONS could cause accidents resulting in serious or fatal personal injury and/or property damage.

SETUP INSTRUCTIONS



This is the safety alert symbol used for the SETUP INSTRUCTIONS section of this manual to alert you to potential personal injury hazards. Obey all instructions to avoid possible injury or death.

Refer to parts breakdown on page 5:

1. Install handles sleeves #4 on the grip handles #5. Install the rubber blocks #10 on the feet #9.
2. Insert the feet #9 between the ears of the foot bracket #8.
3. Secure the feet to the foot bracket by threading the bolt #7 through the washer on the U-pin assembly #13 and then into the ears of the foot bracket #8. Do not tighten the bolt #7 at this time.
4. Insert the foot bracket threaded shafts in between the beam tubes #1 as shown on page 5 and secure them with the washers #3 and knobs #2.
5. Insert the screws #11 in between the beam tubes #1 as shown on page 5 and secure them with the washers #6 and grip handles #5.
6. The links of the chains #12 adjust to make different length chains by attaching them to the hooks at the bottom of the adjustable screws #11.

OPERATING INSTRUCTIONS



This is the safety alert symbol used for the OPERATING INSTRUCTIONS section of this manual to alert you to potential personal injury hazards. Obey all instructions to avoid possible injury or death.

1. Many vehicle engines have points of connection close to the top of the engine that provide a way to handle it during installation or removal. Locate these connection points in order to properly position the beam #1. Contact the vehicle manufacturer for the proper method of connecting to the engine if a connection is not provided. The beam #1 is intended to straddle the engine compartment. Check with the vehicle manufacturer to determine what portion of the engine compartment is strong enough to support the weight of the engine support tool and engine.
2. The support tool feet #9 can be adjusted on a location of the beam #1 that corresponds with the contact point of the engine compartment. Once the feet are properly positioned, turn the knobs #2 in a clockwise direction until tight. Install the u-pin assemblies into their corresponding holes in the foot bracket #8 to minimize the rotation of the foot #9. Once the rotation of the foot #9 and the beam #1 are positioned, secure the foot #9 from rotating by tightening the bolts #7. The beam's position should be closely aligned with the engine connection points.
3. The adjustable screws #11 should be positioned right above the engine connection points. One end of the chains #12 should be secured to the engine connection points using grade 5 or better bolts and nuts. The other ends of the chains or chain links can be slipped over the hooks at the bottom of the adjustable screws #11. Any slack in the chains #12 can be taken up by turning the grip handles #5 in a clockwise rotation.
4. Once the engine has been raised off its motor mounts, turn the grip handles #5 in a clockwise rotation to remove any slack in the chains #12. **WARNING:** Do not turn the grip handles #5 to raise the engine any higher but rather turn the handles to take up the chain slack and support the engine. Once the engine has been properly supported, the device used to lift the engine can be removed until the work has been completed.

PREVENTATIVE MAINTENANCE



This is the safety alert symbol used for the PREVENTATIVE MAINTENANCE section of this manual to alert you to potential personal injury hazards. Obey all instructions to avoid possible injury or death.

1. Always store the Engine Support Bar in a well protected area where it will not be exposed to inclement weather, corrosive vapors, abrasive dust, or any other harmful elements. The Engine Support Bar must be cleaned of water, snow, sand, grit, oil, grease or other foreign matter before using.
2. Every Engine Support Bar owner is responsible for keeping the bar labels clean and readable. Use a mild soap solution to wash external surfaces of the bar. Contact Cornwell Tools for a replacement label if your bar's label is not readable.
3. Inspect the Engine Support Bar before each use. Do not use the Engine Support Bar if any component is cracked, broken, bent or shows sign of any damage. Do not use the Engine Support Bar if it has loose or missing hardware or components, or is modified in any way. Take corrective action before using the bar again. Premature wearing or damage to components caused by loose or missing hardware is not eligible for warranty consideration.



WARRANTY COVERAGE

Cornwell Quality Tools Company ("Cornwell") warrants against defects on this product for a period of TWO (2) YEARS from the date of original retail purchase. Subject to the conditions and limitations set forth below, Cornwell will, at its option, either repair or replace any part of the product(s) that proves defective by reason of improper workmanship or materials.

This warranty does not cover any damage to this product that results from accident, abuse, misuse, natural or personal disaster, or any unauthorized disassembly, repair, or modification. Repairs, disassembly and modification are only authorized to be made by Cornwell or a warranty service center approved by Cornwell.

WARRANTY SERVICE

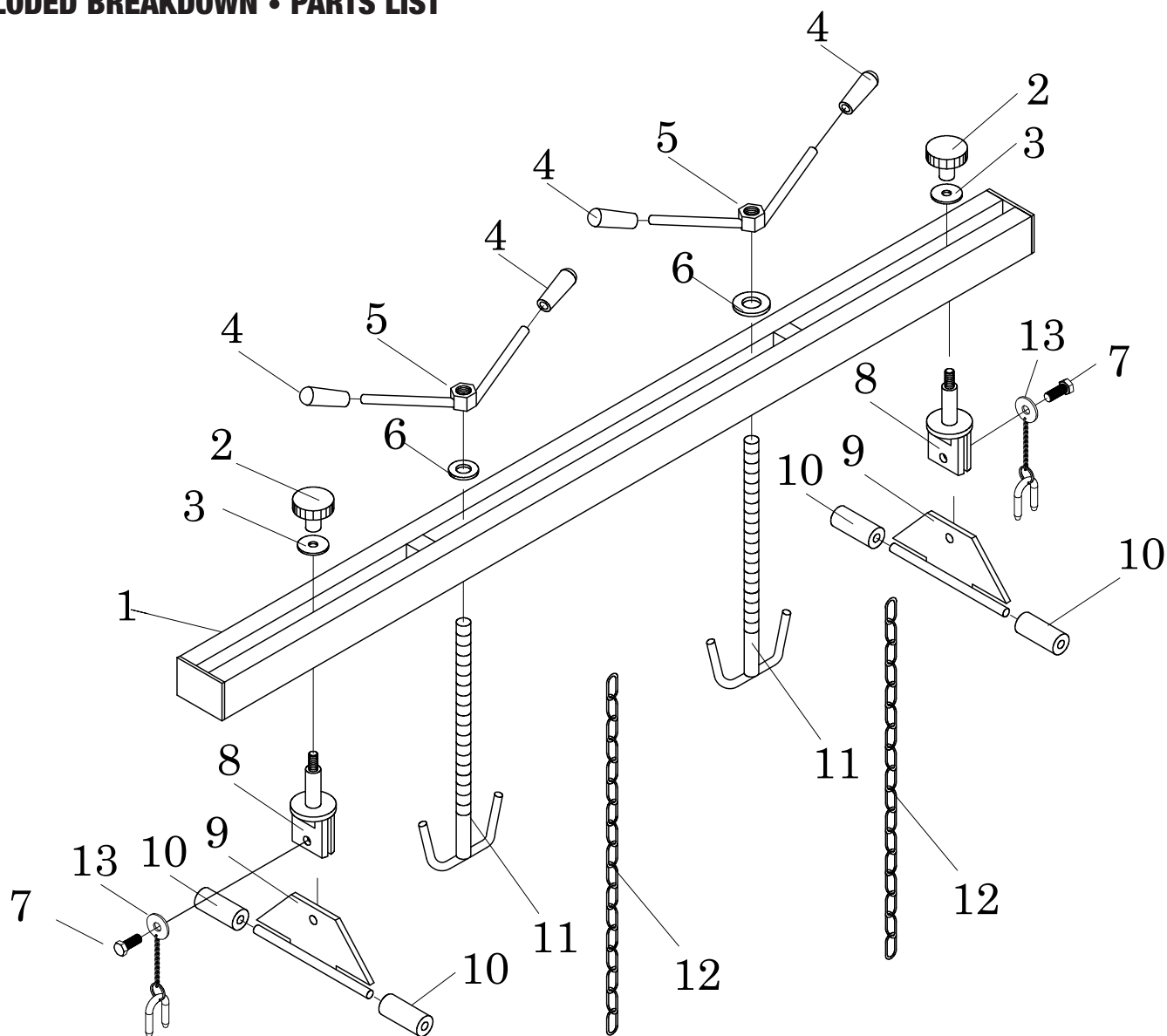
To obtain warranty service, contact your Cornwell dealer.

EXCLUSIONS AND LIMITATIONS

THIS WARRANTY AND THE REMEDIES SET FORTH ABOVE ARE EXCLUSIVE AND IN LIEU OF ALL OTHER WARRANTIES, REMEDIES AND CONDITIONS, WHETHER ORAL OR WRITTEN, EXPRESS OR IMPLIED. CORNWELL SPECIFICALLY DISCLAIMS ANY AND ALL IMPLIED WARRANTIES, INCLUDING, TO THE EXTENT PERMITTED BY APPLICABLE LAW, ANY WARRANTIES OF MERCHANTABILITY AND FITNESS FOR A PARTICULAR PURPOSE. IF CORNWELL CANNOT LAWFULLY DISCLAIM IMPLIED WARRANTIES UNDER THIS LIMITED WARRANTY, ALL SUCH IMPLIED WARRANTIES ARE LIMITED IN DURATION TO THE DURATION OF THIS WARRANTY. IN NO EVENT SHALL CORNWELL BE LIABLE TO THE PURCHASER OR TO THE USER OF A CORNWELL PRODUCT FOR ANY SPECIAL, INCIDENTAL OR CONSEQUENTIAL DAMAGES BASED UPON BREACH OF WARRANTY, BREACH OF CONTRACT, NEGLIGENCE, TORT, OR ANY OTHER LEGAL THEORY. SUCH DAMAGES INCLUDE, WITHOUT LIMITATION, EXPENSES, LOST REVENUES, LOST SAVINGS, LOST PROFITS, OR ANY OTHER INCIDENTAL OR CONSEQUENTIAL DAMAGES ARISING FROM THE PURCHASE, USE OR INABILITY TO USE THE CORNWELL PRODUCT.

Some states do not allow the exclusion or limitation of incidental or consequential damages or exclusions or limitation on the duration of implied warranties or conditions, so the above limitations or exclusions may not apply to you. This warranty gives you specific legal rights, and you may also have other rights that vary by state.

Repair kits and replacement parts are available for many Cornwell products, regardless of whether or not the product is still covered by a warranty plan.

EXPLODED BREAKDOWN • PARTS LIST


REF. #	PART #	DESCRIPTION	QTY.	REF. #	PART #	DESCRIPTION	QTY.
1		Beam	1	8		Foot bracket	2
2		Knob	2	9		Foot	2
3		Washer	2	10		Rubber block	4
4	*	Handle sleeve	4	11	*	Adjustable screw	2
5	*	Grip handle	2	12	RS6211612	Chain	2
6	*	Washer	2	13	*	U-Pin Assembly	2
7		Bolt M12X15	2				

* RS62116BK Bolt Kit Includes #4, 5, 6, 11, 13

Label Kit also available: RSCSE1100PLK