

- *Operating Manual*
- *Warning Information*
- *Parts List*



Meets or exceeds ASME PALD-1997 standards for performance & safety.

!WARNING



DO NOT OVERLOAD. OVERLOADING CAN CAUSE DAMAGE TO, OR FAILURE OF THE STAND.

THIS STAND IS DESIGNED FOR USE ONLY ON HARD LEVEL SURFACES CAPABLE OF SUPPORTING THE LOAD. USE ON OTHER THAN HARD LEVEL SURFACES CAN RESULT IN STAND INSTABILITY AND TIPPING OF LOAD.

LOCK THE MOUNTING-PLATE ROTATING MECHANISM BEFORE APPLYING A LOAD. RELEASE ROTATIONAL LOCKING DEVICE SLOWLY AND CAREFULLY.

ALWAYS USE HIGH STRENGTH SAE GRADE 8 BOLTS FOR ENGINE MOUNTING BOLTS.

MAKE SURE WIDEST SET OF MOUNTING HEAD FINGERS ARE NEAREST THE GROUND WHEN MOUNTING AN ENGINE TO THE STAND.

ALWAYS BE SURE THAT THE LOAD IS CENTERED AND SECURED TO THE MOUNTING PLATE. OFF-CENTER LOADS MAY MAKE THE LOAD AND HANDLE ROTATE IN EITHER DIRECTION WHEN THE ROTATIONAL LOCKING DEVICE IS RELEASED.

NEVER LOOSEN MOUNTING BOLTS UNLESS ENGINE IS SUPPORTED BY A CRANE OR HOIST.

DO NOT USE STAND TO DOLLY OR TRANSPORT ENGINES.

NO ALTERATIONS TO THE STAND OR ADAPTERS SHALL BE MADE.

DO NOT ROTATE MOTOR UNLESS REAR LEGS ARE SECURED FROM TIPPING.

READ, STUDY AND UNDERSTAND ALL INSTRUCTIONS BEFORE OPERATING.

FAILURE TO HEED THESE WARNINGS MAY RESULT IN LOSS OF LOAD, DAMAGE TO STANDS, AND/OR FAILURE RESULTING IN PROPERTY DAMAGE, PERSONAL OR FATAL INJURY.



THIS OPERATING MANUAL CONTAINS IMPORTANT SAFETY INFORMATION.

READ CAREFULLY AND UNDERSTAND ALL INFORMATION BEFORE OPERATING THIS TOOL.

SAVE THIS MANUAL FOR FUTURE USE.

CSE-1000

1000 Lb.

Geared

Engine Stand

!WARNING

DO NOT CRAWL UNDER ENGINE OR PLACE ANY PART OF YOUR BODY UNDER ENGINE AT ANY TIME DURING MOUNTING OF ENGINE, USE OF STAND, OR REMOVAL OF ENGINE.

!WARNING

REFER TO ENGINE SERVICE MANUAL FOR CORRECT LIFTING POINTS, MOUNTING POINTS AND MOUNTING BOLTS! MOUNTING BOLTS SHOULD BE TORQUED AT APPROPRIATE AMOUNT TO MAINTAIN LOAD.

OWNER/USER RESPONSIBILITY

The owner and/or user must have a thorough understanding of the manufacturer's operating instructions and warnings before using this engine stand. Personnel involved in the use and operation of equipment shall be careful, competent, trained, and qualified in the safe operation of the equipment and its proper use when servicing motor vehicles and their components. Warning information should be emphasized and understood. If the operator is not fluent in English, the manufacturer's instructions and warnings shall be read to and discussed with the operator in the operator's native language by the purchaser/owner, making sure that the operator comprehends its contents.

Owner and/or user must study and maintain for future reference the manufacturer's instructions. Owner and/or user is responsible for keeping all warning labels and instruction manuals legible and intact. Replacement labels and literature are available from the manufacturer.

ASSEMBLY INSTRUCTIONS

Assemble as shown in the diagram. First, install the casters to the front and rear axles using the hardware items 1, 2 & 4, being sure to insert bolts from bottom side of caster plate. Then attach the center beam assembly to the axle assembly using hardware items 5, 11 & 12. Next attach one end of brace, item 15, to the center beam using hardware items 14, 11 & 12. Make sure position of brace is as shown in diagram.

Make sure to secure the worm box, item 28, to the post, item 21, using hardware item 29, before placing post onto base assembly. Stand the post on the base and attach by passing bolt, item 14, through middle hole B in the base bracket and the hex shaped mount welded to the bottom of the post. Then pass pin, item 8, through the upper hole A in the base bracket and just in front of the post. Secure pin with latch provided. Now, insert pin, item 8, through the rear hole C including both brackets and secure with latch provided. The last step is to attach the end of the brace, item 15, to the post using pin and latch, item 8. To fold engine stand, simply remove the three pins, fold brace forward, and then fold post forward. The pins can be stored in open holes.

INSPECTION

Visual inspection should be made before each use of the engine stand, checking for damaged, loose or missing parts. Each stand must be inspected by a manufacturer's repair facility immediately, if accidentally subjected to an abnormal load or shock. Any stand which appears to be damaged in any way, found to be badly worn, or operates abnormally **MUST BE REMOVED FROM SERVICE** until necessary repairs are made by a manufacturer's authorized repair facility. It is recommended that an annual inspection of the stand be made by a manufacturer's authorized repair facility and that any defective parts, decals or warning labels be replaced with manufacturer's specified parts. A list of authorized repair facilities is available from the manufacturer.

MAINTENANCE

Apply motor oil to support base wheels and casters. Apply chassis grease to mounting head hub. Rotate head to distribute grease. Keep both the grease fitting and the gear teeth well lubricated.

OPERATING INSTRUCTIONS

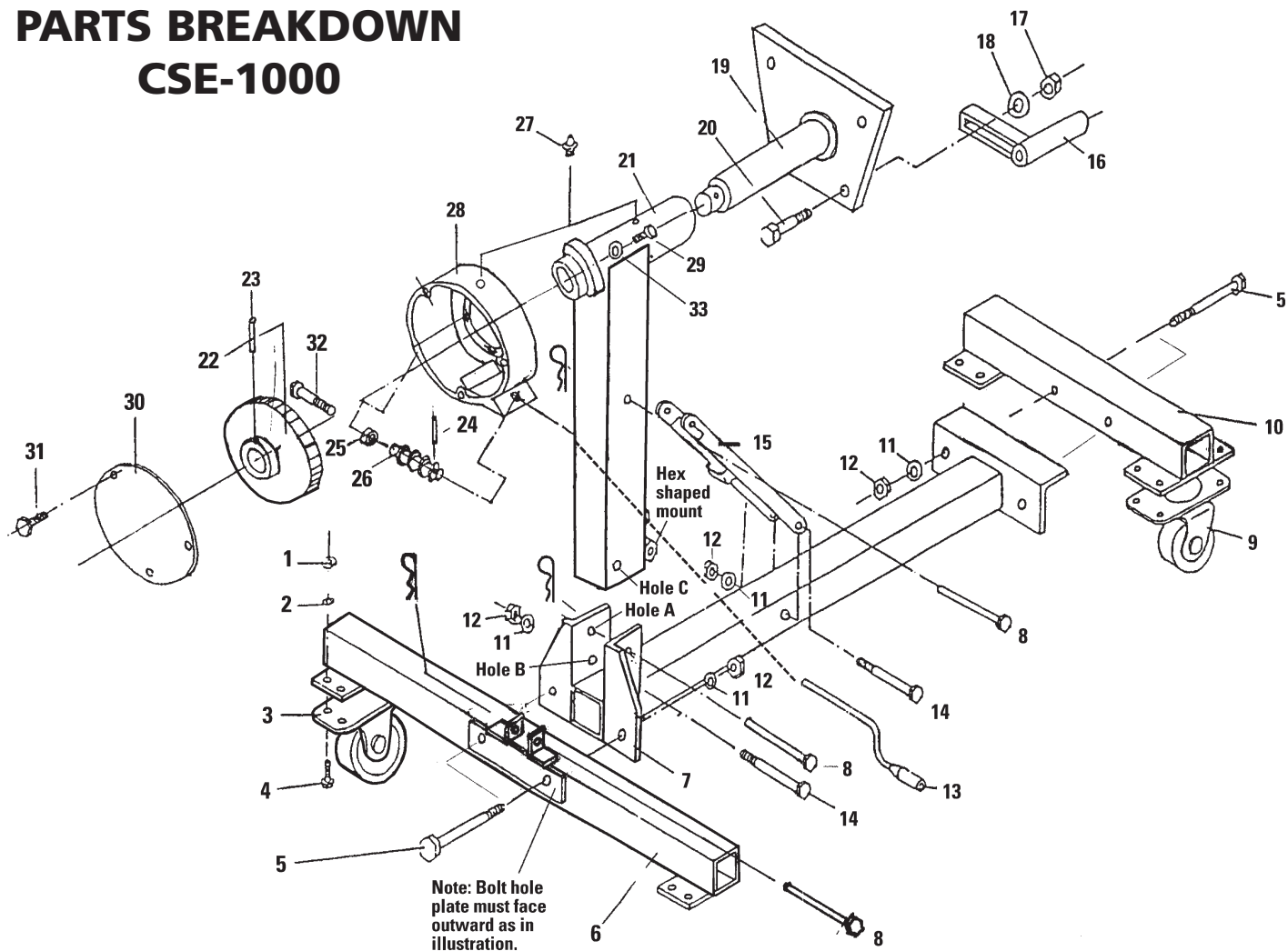
NOTE: Do not mount engine to mounting plate unless all three pins, item 8, are in place and secured with latches provided according to Assembly Instructions.

Drain oil and coolant and remove flywheel from engine before mounting. Mount engine as directed in procedures which follow. Refer to engine service manuals and technical bulletins when mounting engines. Lift engine (block) with crane or hoist until even with head of engine stand. Bolt through adjustable fingers to back of block at bell housing mounting holes. Fasten securely to mounting plate. Slowly lower crane or hoist so that the engine stand supports full weight of engine. To check engine balance, carefully loosen hex bolt at back of rotating head, making sure stand is secured from tipping, and turn handle to rotate engine. If balance is not satisfactory, rotate engine to its original position and raise with crane or hoist just enough to take weight off the stand. Loosen bolts on adjustable fingers and realign so that weight is evenly distributed. Tighten all bolts securely and recheck balance. To remove an engine from stand, attach a crane or hoist and raise engine just enough to take engine weight off stand. Carefully remove bolts attaching fingers to engine. Be aware that there will be a slight movement of stand as total engine weight is transferred to crane.

The engine may be rotated by turning the worm crank. Grease before each use. The stand can be folded down for easy storage and transportation by removing 3 pins, item 8.

PARTS BREAKDOWN

CSE-1000



ITEM NO.	PART NO.	DESCRIPTION	QTY.
*1		M8 Nylok Nut	16
*2		M8 Washer	16
3	RS8300G04	Caster	2
*4		M8 x 20 Allen Head Bolt	16
*5		M12 x 75 Bolt	4
6		Rear Axle Assembly	1
7		Center Beam Assembly	1
*8		Pin & Latch	3
9	RS8300G16	Swivel Caster with Lock	2
10		Front Axle Assembly	1
*11		M12 Washer	6
*12		M12 Nylok Nut	6
13		Worm Crank	1
*14		M12 x 70 Bolt	2
15		Brace	1
16	RS8300G26	Finger	4
*17		M12 Nut	4

ITEM NO.	PART NO.	DESCRIPTION	QTY.
*18		M12 Washer	4
19	RS8300G29BL2	Mounting Plate - Shaft Assembly	1
*20		Mounting Plate Bolt - M12 x 60	4
21		Post	1
22	RS8300G32	Worm Gear	1
23	RS8300G33	Worm Gear Pin	1
24	RS8300G34	Pin	1
25	RS8300G35	Washer	1
26	RS8300G36	Worm	1
27	RS35GF	Grease Fitting	2
28		Worm Box	1
*29		M8 x 25 Bolt	3
30		Worm Box Cover	1
*31		Bolt	3
*32		Bolt	1
*33		M8 Washer	3

*Available only in bolt kit Part #RS8300GBK.

Only items identified by Part No. are available individually.

WARRANTY COVERAGE

Cornwell Quality Tools Company ("Cornwell") warrants against defects in material and workmanship on this product for a period of TWO (2) YEARS from the date of original retail purchase. Subject to the conditions and limitations set forth below, Cornwell will, at its option, either repair or replace any part of the product(s) that proves defective by reason of improper workmanship or materials.

This warranty does not cover any damage to this product that results from accident, abuse, misuse, natural or personal disaster, or any unauthorized disassembly, repair, or modification. Repairs, disassembly and modification are only authorized to be made by Cornwell or a warranty service center approved by Cornwell.

WARRANTY SERVICE

To obtain warranty service, contact your Cornwell dealer, or you may ship the product to the nearest Cornwell Authorized Warranty Center (see listing), transportation prepaid. You must include your name and address, proof of the date of original retail purchase (receipt), and a detailed description of the problem you are experiencing and suspected defect.

EXCLUSIONS AND LIMITATIONS

THIS WARRANTY AND THE REMEDIES SET FORTH ABOVE ARE EXCLUSIVE AND IN LIEU OF ALL OTHER WARRANTIES, REMEDIES AND CONDITIONS, WHETHER ORAL OR WRITTEN, EXPRESS OR IMPLIED. CORNWELL SPECIFICALLY DISCLAIMS ANY AND ALL IMPLIED WARRANTIES, INCLUDING, TO THE EXTENT PERMITTED BY APPLICABLE LAW, ANY WARRANTIES OF MERCHANTABILITY AND FITNESS FOR A PARTICULAR PURPOSE. IF CORNWELL CANNOT LAWFULLY DISCLAIM IMPLIED WARRANTIES UNDER THIS LIMITED WARRANTY, ALL SUCH IMPLIED WARRANTIES ARE LIMITED IN DURATION TO THE DURATION OF THIS WARRANTY.

IN NO EVENT SHALL CORNWELL BE LIABLE TO THE PURCHASER OR TO THE USER OF A CORNWELL PRODUCT FOR ANY SPECIAL, INCIDENTAL OR CONSEQUENTIAL DAMAGES BASED UPON BREACH OF WARRANTY, BREACH OF CONTRACT, NEGLIGENCE, TORT, OR ANY OTHER LEGAL THEORY. SUCH DAMAGES INCLUDE, WITHOUT LIMITATION, EXPENSES, LOST REVENUES, LOST SAVINGS, LOST PROFITS, OR ANY OTHER INCIDENTAL OR CONSEQUENTIAL DAMAGES ARISING FROM THE PURCHASE, USE OR INABILITY TO USE THE CORNWELL PRODUCT.

Some states do not allow the exclusion or limitation of incidental or consequential damages or exclusions or limitation on the duration of implied warranties or conditions, so the above limitations or exclusions may not apply to you. This warranty gives you specific legal rights, and you may also have other rights that vary by state.

Repair kits and replacement parts are available for many Cornwell products, regardless of whether or not the product is still covered by a warranty plan.

Cornwell Quality Tools Company
667 Seville Road • Wadsworth, OH 44281-1094

CSE-1000 SPECIFICATIONS

Capacity	1000 Lbs.
Height	36"
Folded Height	21"
Length	34"
Width	36-1/2"
Shipping Weight	96 Lbs.

