

## Operating Instructions • Warning Information • Parts Breakdown



### **⚠ WARNING**



**ALWAYS READ INSTRUCTIONS BEFORE  
USING POWER TOOLS**



**ALWAYS WEAR SAFETY GOGGLES**



**WEAR HEARING PROTECTION**



**AVOID PROLONGED EXPOSURE TO VIBRATION**

### **⚠ WARNING**

Some dust created by power sanding, sawing, grinding, drilling, and other construction activities contains chemicals known to cause cancer, birth defects or other reproductive harm. Some examples of these chemicals are:

- lead from lead-based paints,
- crystalline silica from bricks and cement and other masonry products, and
- arsenic and chromium from chemically-treated lumber.

Your risk from these exposures varies, depending on how often you do this type of work. To reduce your exposure to these chemicals: work in a well ventilated area, and work with approved safety equipment, such as those dust masks that are specially designed to filter out microscopic particles.

### **SPECIFICATIONS**

Drive Size .....	1/4"
Max. Torque .....	96 in/lbs
Length .....	5.5"
Weight (Tool With Battery) .....	1.9 lbs.
Height (Tool With Battery) .....	7.6"
Battery Type .....	10.8V Li-ion
Battery Capacity .....	1.5Ah
Charging Time .....	< 60 min.
Compatible Battery .....	CCT108LB
Compatible Charger .....	CCT108CHRG and CCTCHRG

## **CCT108SD**

### **10.8V Li-ion Screwdriver**

# **WARNING**

**FAILURE TO OBSERVE THESE WARNINGS COULD RESULT IN INJURY.**

**SAVE THESE INSTRUCTIONS!**

## **GENERAL SAFETY INFORMATION (FOR ALL BATTERY OPERATED TOOLS)**

### **WARNING:**

**Read and understand all instructions. Failure to follow all instructions listed below, may result in electric shock, fire and/or serious personal injury.**

### **Work Area Safety**

1. Keep your work area clean and well lit.  
Cluttered benches and dark areas invite accidents.
2. Do not operate power tools in explosive atmospheres, such as in the presence of flammable liquids, gases, or dust. Power tools create sparks which may ignite the dust or fumes.
3. Keep bystanders, children, and visitors away while operating a power tool. Distractions can cause you to lose control and endanger others.

### **Electrical Safety**

4. A battery operated tool with integral batteries or a separate battery pack must be recharged only with the specified charger for the battery. A charger that may be suitable for one type of battery may create a risk of fire when used with another battery.
5. Use battery operated tool only with specifically designated battery pack. Use of any other batteries may create a risk of fire.

### **Personal Safety**

6. Stay alert, watch what you are doing, and use common sense when operating a power tool. Do not use tool while tired or under the influence of drugs, alcohol, or medication.  
A moment of inattention while operating power tools may result in serious personal injury.
7. Dress properly. Do not wear loose clothing or jewelry. Contain long hair. Keep your hair, clothing, and gloves away from moving parts. Loose clothes, jewelry, or long hair can be caught in moving parts.
8. Avoid accidental starting. Be sure switch is in the locked or off position before inserting battery pack. Carrying tools with your finger on the switch or inserting the battery pack into a tool with the switch on invites accidents.
9. Remove adjusting keys or wrenches before turning the tool on. A wrench or a key that is left attached to a rotating part of the tool may result in personal injury.
10. Do not overreach. Keep proper footing and balance at all times. Proper footing and balance enable better control of the tool in unexpected situations.
11. Use safety equipment. Always wear eye protection. Dust mask, non-skid safety shoes, hard hat, or hearing protection must be used for appropriate conditions.

### **Tool Use and Care**

12. Use clamps or another practical way to secure and support the workpiece to a stable platform. Holding the work by hand or against your body is unstable and may lead to loss of control.
13. Do not force tool. Use the correct tool for your application.
14. Do not use tool if switch does not turn it on or off. A tool that cannot be controlled with the switch is dangerous and must be repaired.
15. Disconnect battery pack from tool or place the switch in the locked or off position before making any adjustments, changing accessories, or storing the tool. Such preventive safety measures reduce the risk of starting the tool accidentally.
16. Store idle tools out of reach of children and other untrained persons. Tools are dangerous in the hands of untrained users.
17. When battery pack is not in use, keep it away from other metal objects like: paper clips, coins, keys, nails, screws, or other small metal objects that can make a connection from one terminal to another. Shorting the battery terminals together may cause sparks, burns, or a fire.
18. Maintain tools with care. Keep cutting tools sharp and clean. Properly maintained tools with sharp cutting edge are less likely to bind and are easier to control.
19. Check for misalignment or binding of moving parts, breakage of parts, and any other condition that may affect the tool's operation. If damaged, have the tool serviced before using. Many accidents are caused by poorly maintained tools.
20. Use only accessories that are recommended by the manufacturer for your model. Accessories that may be suitable for one tool may create a risk of injury when used on another tool.

### **Service**

21. Tool service must be performed only by the Cornwell authorized service center listed. Service or maintenance performed by unqualified personnel may result in a risk of injury. Repair by unqualified personnel, use of unauthorized parts, and failure to follow maintenance instructions may create a risk of shock or injury and will void warranty.

**SAVE THESE INSTRUCTIONS!**

## **SPECIFIC SAFETY RULES**

**DO NOT let comfort or familiarity with product replace strict adherence to cordless product safety rules. If you use this tool unsafely or incorrectly, you can suffer serious personal injury.**

1. Hold tool by insulated gripping surfaces when performing an operation where the cutting tool or adapter may contact hidden wiring. Contact with a "live" wire will also make exposed metal parts of the tool "live" and shock the operator.

2. Be aware that this tool is always in operating condition, because it does not have to be plugged into an electrical outlet.
3. Always be sure you have firm footing.
4. Be sure no one is below when using the tool in high locations.
5. Hold the tool firmly and use both hands.
6. Keep hands and hair away from rotating parts.
7. Do not leave the tool running. Do not force tool to stay in the "on" position. Operate the tool only when hand-held.
8. Do not touch the drill bit, impact socket, any adapter, or the workpiece immediately after operation; they may be extremely hot and could burn your skin.

9. Some material contains chemicals which may be toxic. Take caution to prevent working dust inhalation and skin contact. Follow material supplier safety data.

**WARNING:**

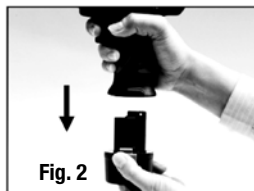
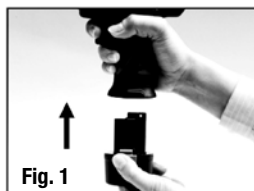
**MISUSE or failure to follow the safety rules stated in this instruction manual may cause serious personal injury.**

## OPERATING INSTRUCTION

### Installing Or Removing Battery Pack

(See Fig.1, Fig.2)

1. Your new battery pack is not fully charged. You may need to charge it before use.
2. Make sure the switch is in the off position before insertion/removal of a battery pack.
3. To remove a battery pack, depress both tabs on either side of the battery and pull downward.
4. To insert a battery pack, align the battery with the tool housing and push battery inward until click indicating battery is fully installed.



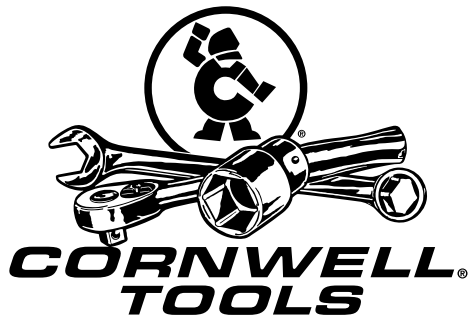
### Charging The Battery Pack

(See Fig.3)

1. Battery may not charge when it is above a certain preset temperature limit. Allow temperature of battery to cool before charging.
2. The charge process will take less than one hour.
3. After charging, unplug the charger from the power source and stow away in a safe place.

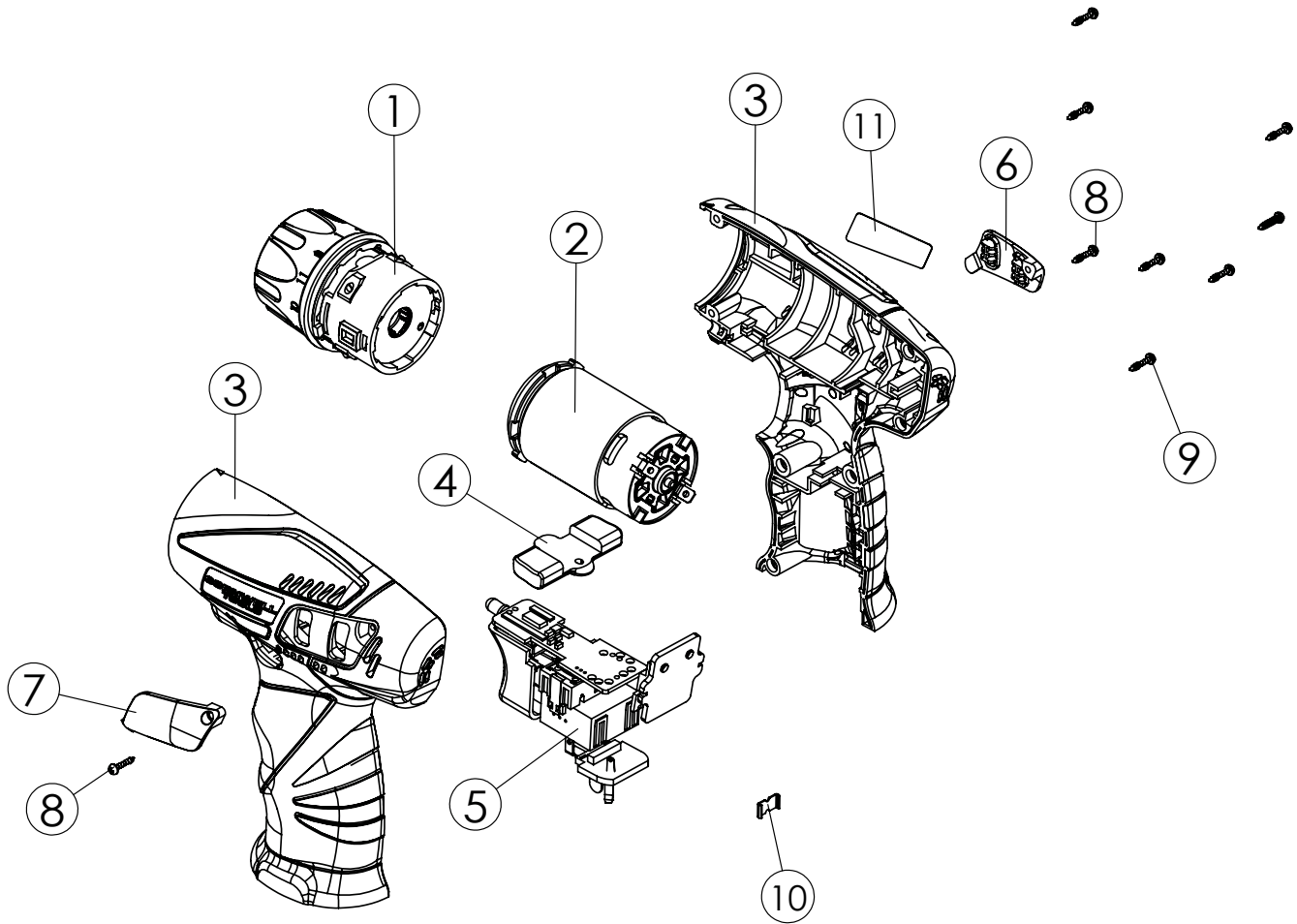
### Tool Operation

1. There are 12 torque settings on the tool. Adjust to the proper setting for the job.
2. Select the torque setting for the maximum torque position (Useful when drilling).
3. Ensure the bit is seated properly before actuating trigger.
4. Forward and reverse switch is actuated by a sliding mechanism located above the handle.



# CCT108SD

## 10.8V Li-ion Screwdriver



Index #	Part #	Description	Qty.	Index #	Part #	Description	Qty.
1	RS108SD01	Gear Box	1	7	RS108SD07	Side Panel-Left	1
2	RS108SD02	Motor Assembly	1	8	RS108SD08	Side Panel Screw	2
3	RS108SD03	Housing Left and Right	1	9	RS108DD11	Screw	7
4	RS108SD10	Forward/Reverse Rod	1	10	RS108DD12	Housing Clip	1
5	RS108SD05	PCB & Main Switch Assembly	1	11	RS108SD11	Housing Label-R	1
6	RS108SD06	Side Panel-Right	1				

Also available: CCT108BG carry bag

# WARNING

FAILURE TO OBSERVE THESE WARNINGS COULD RESULT IN INJURY.

**SAVE THESE INSTRUCTIONS!**

## **SAFETY INSTRUCTIONS FOR BATTERY CHARGER AND BATTERY PACK**

### **DANGER! READ CAREFULLY**

**120 Volts present at charging terminal. Absolutely DO NOT probe with conductive objects.**

#### **1. CAREFULLY READ AND UNDERSTAND THESE INSTRUCTIONS**

This manual contains critical safety and operating instructions for the tool, battery charger, and batteries.

2. Before using battery charger, read all instructions and cautionary markings on (1) battery charger, (2) battery, and (3) product using battery.
3. **CAUTION** - To reduce risk of injury, charge only Cornwell rechargeable batteries marked on the charger label. Other types of batteries may burst causing personal injury and damage.
4. Do not expose charger to rain or snow.
5. Use of an attachment not recommended or sold by the battery charger manufacturer may result in a risk of fire, electric shock, or injury to persons.
6. To reduce risk of damage to electric plug and cord, pull by plug rather than cord when disconnecting charger.
7. Make sure cord is located so that it will not be stepped on, tripped over, or otherwise subjected to damage or stress.
8. An extension cord should not be used unless absolutely necessary. Use of improper extension cord could result in a risk of fire and electric shock. If extension cord must be used, make sure:
  - a. That pins on plug of extension cord are the same number size, and shape as those of plug on charger;
  - b. That extension cord is properly wired and in good electrical condition;
  - c. That wire size is at least as large as the one specified in the table below.
9. Do not operate charger with damaged cord or plug - replace them immediately.
10. Do not operate charger if it has received a sharp blow, been dropped, or otherwise damaged in any way; take it to a Cornwell AUTHORIZED service facility.
11. Do not disassemble charger or battery cartridge; take it to your Cornwell AUTHORIZED service facility. Incorrect reassembly may result in a risk of electric shock or fire.
12. To reduce risk of electric shock, unplug charger from outlet before attempting any maintenance or cleaning. Turning off controls will not reduce this risk.

13. The battery charger is not intended for use by young children or infirm persons without supervision.
14. Young children should be supervised to ensure that they do not play with the battery charger.

## **OPERATIONAL GUIDELINES FOR BATTERY CHARGER AND BATTERY PACK**

1. Do not attempt to use a step-up transformer, an engine generator or DC power receptacle.
2. Do not allow anything to cover or clog the charger vents.
3. Always cover the battery terminals with the box or cover when the battery cartridge is not used.
4. Do not short the battery cartridge:
  - (1) Do not touch the terminals with any conductive material.
  - (2) Avoid storing battery cartridge in a container with other metal objects such as nails, screws, coins, etc.
  - (3) Do not expose battery cartridge to water or rain. A battery short can cause a large current flow, overheating, possible burns and even a breakdown.
5. Do not store the tool and battery cartridge in locations where the temperature may reach or exceed 50°C (122°F).

**Table 1: RECOMMENDED MINIMUM AWG SIZE FOR EXTENSION CORDS FOR BATTERY CHARGERS**

Length of Cord (Feet)	25	50	75	100	150
AWG Size of Cord	18	18	16	14	12

6. Do not incinerate the battery pack even if it is severely damaged or is completely worn out. The battery cartridge can explode in a fire.
7. Be careful not to drop, shake or strike battery as it will affect the capacity and may void warranty.
8. Do not charge inside a box or container of any kind. The charger and battery are ventilated devices and must NOT be placed next to a heat source or exposed to radiating heat.
9. Place charger on a solid and sturdy surface as there are vents on the bottom side of the charger.
10. Always unplug the charger from the power supply when a charging sequence is not taking place.

# CORNWELL CORDLESS BATTERY USE AND CARE GUIDE

## IMPORTANT!

All rechargeable batteries have a finite lifespan and will slowly lose storage capacity as they age and are cycled. Rechargeable batteries are consumable items and should be carefully treated to ensure proper operation during its limited lifespan. Please read the following guide carefully for tips that may maximize the performance of your Cornwell rechargeable batteries. Batteries should be handled with care and disposed through proper authorities.

### WARNING! MUST READ!

**No not crush or incinerate batteries as it may cause danger from explosion.**

**Do not place batteries in confined spaces where it may be in contact with conductive objects. For example, do not place battery in pockets, tool boxes, tool bags, etc. with screws, keys, metal shavings, etc. as the battery may short circuit and/or cause fire hazard.**

Only charge in Cornwell chargers and never attempt to wire to alternative charging sources.

Danger of explosion, electric shock, fire, and electrocution may result from:

- Abuse, misuse, and severe shock
- Subjecting the unit to conductive particles, objects, and liquids
- Connecting two chargers together
- Charging Cornwell batteries with other chargers
- Using the Cornwell charger to charge other batteries
- Operating the charger with a damaged cord or plug

### PROPER CARE WILL MAXIMIZE PRODUCT LIFE

## PROPER CARE FOR CORNWELL LITHIUM-ION (LI-ION) BATTERIES

- All Li-ion batteries are sensitive to high temperature and should be kept cool, dry, and out of direct light exposure. Ideal temperature range for operation and storage is between 32 and 75 °F. Li-ion batteries may be stored in the refrigerator, but freezers are not recommended.
- Do not leave batteries unused for extended periods of time, especially when it is fully charged or fully discharged. Bring a Li-ion battery to approximately 50% charge level before storing.
- Li-ion batteries are sensitive to shock. Avoid dropping, hitting, or exposure to vibration.
- Li-ion can be charged frequently and recharged before it is fully depleted. Li-ion, in fact, is ideally recharged before it is completely depleted. Recharging when there is 25%-50% capacity remaining in the battery may prolong its lifespan.

- Contaminants can adversely affect the performance and life of Li-ion batteries. Minimize the battery's exposure to dust, dirt, and small particles.
- Recharge Cornwell Li-ion batteries only in Cornwell recharging devices that are designed specifically for the battery type. Never subject batteries to any other quick-charging, quick-discharging, or quick-restoring devices.

# CORNWELL CORDLESS WARRANTY

## CORNWELL 10.8V, 14.4V, and 18V CORDLESS TOOLS AND CHARGER

Cornwell Tools warrant its 10.8V, 14.4V, and 18V cordless tools and chargers to be free from defects in material and workmanship for a period of one (1) year from the original date of purchase. Please see separate section below for warranty of batteries.

Defective products must be returned and analyzed by Power Tool Repair, at the address listed below, freight prepaid. The return must be accompanied by a valid proof of purchase in order to obtain warranty and also a description of the alleged defect. Cornwell Tools, at their discretion, will repair or replace any 10.8V, 14.4V, and 18V cordless tool or charger found to be defective in material or workmanship at no charge.

## CORNWELL 10.8V LITHIUM-ION, 14.4V LITHIUM-ION and 18V LITHIUM-ION BATTERIES Pertaining part numbers include CCCT108LB, CCT144LB and CCT18LB

Cornwell Tools warrant its 10.8 V Lithium-ion (Li-ion) ,14.4V Lithium-ion (Li-ion) and 18V Li-ion batteries to be free from defects in material and workmanship for a period of one (1) year from the original date of purchase.

If the battery should fail within the warranty period, it must be returned and analyzed by Power Tool Repair, at the address listed, freight prepaid. The return must be accompanied by a valid proof of purchase to obtain warranty. Battery capacity defect is only defined as the maximum battery capacity at less than 50% of manufacturer's rated capacity within the warranty period, and only as determined by Cornwell Tools.

Based on the evaluation, Cornwell Tools, at their discretion, will either repair or replace any batteries to be found defective in material or workmanship at no charge.

Please see Cornwell Battery Care Guide for helpful tips that may maximize the useful life of your battery.

## CORNWELL TOOLS LIMITED WARRANTY

This warranty will not cover products repaired by parties other than Power Tool Repair. Furthermore, products with normal wear and tear, lack of maintenance, modifications, accidental damage, lost components, or abuse are not eligible for warranty.

Cornwell Tools shall in no event be liable for any consequential, incidental, indirect, or punitive damages. This LIMITED WARRANTY gives you specific legal rights. You may also have other rights, which vary by state. Some states do not allow the limitation or exclusion of incidental or consequential damages, or the duration of implied warranties, so the above limitation or exclusion may not apply to you.

Return all Warranty Items, Freight Pre-paid, to the following Cornwell Authorized Service Facility:

### POWER TOOL REPAIR

891 Moe Dr. Suite H

Akron, OH 44310

Tel: (330) 630-0022

Fax: (330) 630-3320