

Operating Instructions • Warning Information  
• Parts Breakdown



### SPECIFICATIONS

Overall Length . . . . .	12.4" (315mm)
Torque . . . . .	110 ft. lbs.
Sound Pressure Level . . . . .	90 dbA
Sound Power Level . . . . .	101 dbA
RPM . . . . .	200
Weight(kgs) . . . . .	3.46lbs. (1.57kgs)
CFM . . . . .	4.9
Vibration Level . . . . .	2.54 m/sec <sup>2</sup>
Air Inlet Size . . . . .	1/4"-18NPT
Rec. Air Pressure . . . . .	90PSI(6.2BAR)

### ! WARNING

Some dust created by power sanding, sawing, grinding, drilling, and other construction activities contains chemicals known to cause cancer, birth defects or other reproductive harm. Some examples of these chemicals are:

- lead from lead-based paints,
- crystalline silica from bricks and cement and other masonry products, and
- arsenic and chromium from chemically-treated lumber.

Your risk from these exposures varies, depending on how often you do this type of work. To reduce your exposure to these chemicals: work in a well ventilated area, and work with approved safety equipment, such as those dust masks that are specially designed to filter out microscopic particles.

### ! WARNING

**RATED RPM OF THE ACCESSORY USED  
MUST EXCEED THE MAXIMUM TOOL  
RPM SHOWN**



**ALWAYS READ  
INSTRUCTIONS BEFORE  
USING POWER TOOLS**



**ALWAYS WEAR  
SAFETY GOGGLES**



**WEAR HEARING  
PROTECTION**



**AVOID PROLONGED  
EXPOSURE TO VIBRATION**

## CAT8000BP

### 3/8" Air Ratchet

# ! WARNING

**FAILURE TO OBSERVE THESE WARNINGS COULD RESULT IN INJURY.**

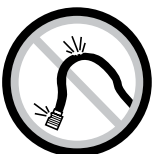


**THIS INSTRUCTION MANUAL CONTAINS IMPORTANT SAFETY INFORMATION. READ THIS INSTRUCTION MANUAL CAREFULLY AND UNDERSTAND ALL INFORMATION BEFORE OPERATING THIS TOOL.**

- Always operate, inspect and maintain this tool in accordance with American National Standards Institute Safety Code of Portable Air Tools (ANSI B186.1) and any other applicable safety codes and regulations.
- For safety, top performance and maximum durability of parts, operate this tool at 90 psig: 6.2 bar max air pressure with 3/8" diameter air supply hose.

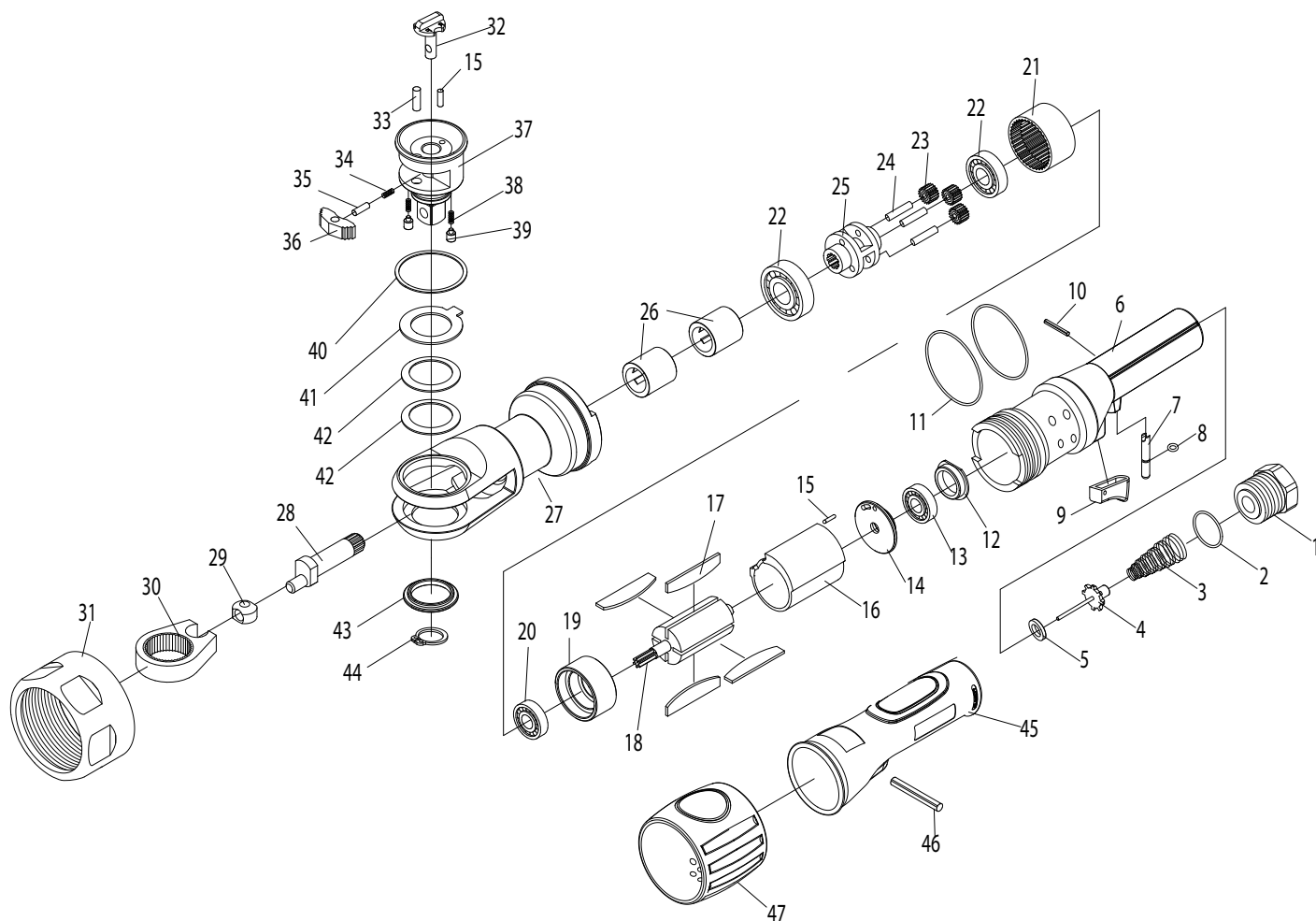


- Always wear impact-resistant eye and face protection when operating or performing maintenance on this tool. Always wear hearing protection when using this tool.
- High sound levels can cause permanent hearing loss. Use hearing protection as recommended by your employer or OSHA regulation.
- Keep the tool in efficient operating condition.
- Operators and maintenance personnel must be physically able to handle the bulk, weight and power of this tool.
- Air under pressure can cause severe injury. Never direct air at yourself or others. Always turn off the air supply, drain hose of air pressure and detach tool from air supply before installing, removing or adjusting any accessory on this tool, or before performing any maintenance on this tool. Failure to do so could result in injury. Whip hoses can cause serious injury. Always check for damaged, frayed or loose hoses and fittings, and replace immediately. Do not use quick detach couplings at tool. See instructions for correct set-up.



- Air powered tools can vibrate during use. Vibration, repetitive motions or uncomfortable positions over extended periods of time may be harmful to your hands and arms. Discontinue use of tool if discomfort, tingling feeling or pain occurs. Seek medical advice before resuming use.
- Place the tool on the work before starting the tool.
- Slipping, tripping and/or falling while operating air tools can be a major cause of serious injury or death. Be aware of excess hose left on the walking or work surface.
- Keep body working stance balanced and firm. Do not overreach when operating the tool.
- Anticipate and be alert for sudden changes in motion during start up and operation of any power tool.
- Do not carry tool by the hose. Protect the hose from sharp objects and heat.
- Keep away from rotating end of tool. Do not wear jewelry or loose clothing. Secure long hair. Scalping can occur if hair is not kept away from tool and accessories. Choking can occur if neckwear is not kept away from tool and accessories.
- Do not lubricate tools with flammable or volatile liquids such as kerosene, diesel or jet fuel.
- Do not force tool beyond its rated capacity.
- Do not remove any labels. Replace any damaged labels.
- Use accessories recommended by Cornwell Tools.

## Parts Breakdown

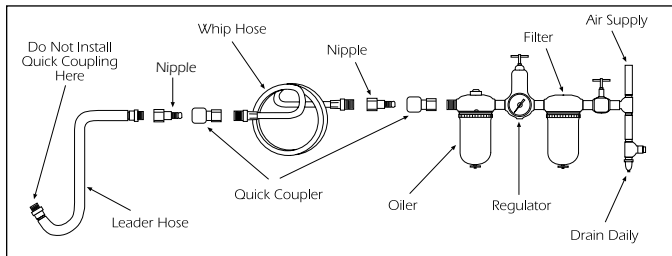


Ref No.	Part No.	Description	Qty
1	RS8000BP01	Air Inlet	1
2	RS281402	O-Ring	1
3	RS8000BP03	Spring	1
4	RS8000BP04	Throttle Valve	1
5	RS8000BP05	Throttle Seat	1
6	RS8000BP06	Housing	1
7	RS8000BP07	Throttle Pin	1
8	RS281407	O-Ring	1
9	RS8000BP09	Lever	1
10	RS8000BP10	Roll Pin	1
11	RS8000BP11	O-Ring	2
12	RS8000BP12	Plug	1
13	RS108A12	Ball Bearing	1
14	RS8000BP14	Rear End Plate	1
15*	RS8000BP15	Roll Pin	2
16	RS8000BP16	Cylinder	1
17	RS8000BP17	Rotor Blade	4
18	RS8000BP18	Rotor	1
19	RS8000BP19	Front End Plate	1
20	RS8000BP20	Ball Bearing	1
21	RS8000BP21	Internal Gear	1
22	RS8000BP22	Ball Bearing	2
23	RS8000BP23	Pin	3
24	RS8000BP24	Bevel Gear	3
25	RS8000BP25	Planet Carrier	1
26	RS281428	Needle Bearing	2
27	RS8000BP27	Ratchet Housing	1

Ref No.	Part No.	Description	Qty
28	RS8000BP28	Crank Shaft	1
29	RS8000BP29	Drive Bushing	1
30	RS8000BP30	Ratchet Yoke	1
31	RS8000BP31	Clamp Nut	1
32	*	Reverse Button	1
33	*	Pin	1
34	*	Spring	1
35	*	Pin	1
36	*	Ratchet Pawl	1
37	*	Anvil (3/8")	1
38	*	Spring	2
39	*	Pin	2
40	*	Washer	1
41	*	Washer	1
42	*	Wave Washer	2
43	*	Thrust Washer	1
44	*	Retainer Ring	1
45	RS8000BP45	Comfort Grip	1
46	RS8000BP46	Roll Pin	1
47	RS8000BP47	Muffer	1

\* Available as Head Kit, Part No. CAT8000BPRHK. (Incl. Item #15, 32-44)

## Operating Instructions • Warning Information • Parts Breakdown



### AIR SUPPLY

Tools of this class operate on a wide range of air pressures. It is recommended that air pressure of these tools measures 90 PSI at the tool while running free. Higher pressure (over 90 psig; 6.2 bar) raises performance beyond the rated capacity of the tool, which will shorten tool life because of faster wear and could cause injury.

Always use clean, dry air. Dust, corrosive fumes and/or water in the air line will cause damage to the tool. Drain the air tank daily. Clean the air inlet filter screen on at least a weekly schedule. The recommended hookup procedure can be viewed in the above figure.

The air inlet used for connecting air supply has standard 1/4" NPT. Line pressure should be increased to compensate for unusually long air hoses (over 25 feet). Minimum hose diameter should be 3/8" I.D. and fittings should have the same inside dimensions and be tightly secured.

### OPERATION

This ratchet wrench is rated at 3/8" USS bolt size. Rating must be down graded for spring U bolts, tie bolts, long cap screws, double depth nuts, badly rusted conditions and spring fasteners as they absorb much of the impact power. When possible, clamp or wedge the bolt to prevent springback.

Soak rusted nuts in penetrating oil and break rust seal before removing with impact wrench. If nut does not start to move in three to five seconds use a larger size impact wrench. Do not use impact wrench beyond rated capacity as this will drastically reduce tool life.

NOTE: Actual torque on a fastener is directly related to joint hardness, tool speed, condition of socket and the time the tool is allowed to impact.

### LUBRICATION

Lubricate the air motor daily with quality air tool oil. If no air line oiler is used, run 1/2 oz. of air tool oil through the tool. The oil can be squirted into the tool air inlet or into the hose at the nearest connection to the air supply, then run the tool. A rust inhibitive oil is acceptable for air tools.

**WARNING:** After an air tool has been lubricated, oil will discharge through the exhaust port during the first few seconds of operation. The exhaust port must be covered with a towel before applying air pressure to prevent serious injury.

### WARRANTY COVERAGE

Cornwell Quality Tools Company ("Cornwell") warrants this product against defects in material and workmanship for a period of ONE (1) YEAR from the date of original retail purchase. Subject to the conditions and limitations set forth below, Cornwell will, at its option, either repair or replace any part of the product(s) that proves defective by reason of improper workmanship or materials.

This warranty does not cover any damage to this product that results from accident, abuse, misuse, natural or personal disaster, or any unauthorized disassembly, repair, or modification. Repairs, disassembly and modification are only authorized to be made by Cornwell or a Cornwell Authorized Warranty Center.

#### WARRANTY SERVICE

In order to have your tool repaired, return the tool to any Cornwell Authorized Warranty Center, freight prepaid. Please include a copy of your proof of purchase and a brief description of the problem. The tool will be inspected and if any part or parts are found to be defective in material or workmanship, they will be repaired free of charge, and the repaired tool will be returned to you freight prepaid.

#### EXCLUSIONS AND LIMITATIONS

THIS WARRANTY AND THE REMEDIES SET FORTH ABOVE ARE EXCLUSIVE AND IN LIEU OF ALL OTHER WARRANTIES, REMEDIES AND CONDITIONS, WHETHER ORAL OR WRITTEN, EXPRESS OR IMPLIED. CORNWELL SPECIFICALLY DISCLAIMS ANY AND ALL IMPLIED WARRANTIES, INCLUDING, TO THE EXTENT PERMITTED BY APPLICABLE LAW, ANY WARRANTIES OF MERCHANTABILITY AND FITNESS FOR A PARTICULAR PURPOSE. IF CORNWELL CANNOT LAWFULLY DISCLAIM IMPLIED WARRANTIES UNDER THIS LIMITED WARRANTY, ALL SUCH IMPLIED WARRANTIES ARE LIMITED IN DURATION TO THE DURATION OF THIS WARRANTY.

IN NO EVENT SHALL CORNWELL BE LIABLE TO THE PURCHASER OR TO THE USER OF A CORNWELL PRODUCT FOR ANY SPECIAL, INCIDENTAL OR CONSEQUENTIAL DAMAGES BASED UPON BREACH OF WARRANTY, BREACH OF CONTRACT, NEGLIGENCE, TORT, OR ANY OTHER LEGAL THEORY. SUCH DAMAGES INCLUDE, WITHOUT LIMITATION, EXPENSES, LOST REVENUES, LOST SAVINGS, LOST PROFITS, OR ANY OTHER INCIDENTAL OR CONSEQUENTIAL DAMAGES ARISING FROM THE PURCHASE, USE OR INABILITY TO USE THE CORNWELL PRODUCT.

Some states do not allow the exclusion or limitation of incidental or consequential damages or exclusions or limitation on the duration of implied warranties or conditions, so the above limitations or exclusions may not apply to you. This warranty gives you specific legal rights, and you may also have other rights that vary by state.

Repair kits and replacement parts are available for many Cornwell products, regardless of whether or not the product is still covered by a warranty plan.

Cornwell Quality Tools Company

667 Seville Road • Wadsworth, OH 44281-1094