

# Operating Instructions • Warning Information

## • Parts Breakdown



### ! WARNING



**ALWAYS READ INSTRUCTIONS BEFORE USING POWER TOOLS**



**ALWAYS WEAR SAFETY GOGGLES**



**WEAR HEARING PROTECTION**



**AVOID PROLONGED EXPOSURE TO VIBRATION**



**RPM OF THE ACCESSORY USED MUST MEET OR EXCEED RPM OF TOOL (4,000 RPM)**

### ! WARNING

Some dust created by power sanding, sawing, grinding, drilling, and other construction activities contains chemicals known to cause cancer, birth defects or other reproductive harm. Some examples of these chemicals are:

- lead from lead-based paints,
- crystalline silica from bricks and cement and other masonry products, and
- arsenic and chromium from chemically-treated lumber.

Your risk from these exposures varies, depending on how often you do this type of work. To reduce your exposure to these chemicals: work in a well ventilated area, and work with approved safety equipment, such as those dust masks that are specially designed to filter out microscopic particles.

### SPECIFICATIONS

Free Speed: .....4,000 RPM  
 Air Inlet: ..... 1/4" NPT  
 Recommended Hose Size:.....3/8" I.D.  
 Recommended Air Pressure: ..... 90 PSIG  
 Air Consumption: ..... 3 CFM  
 Horse Power: ..... .5  
 Length: ..... 11.2"  
 Shipping Weight: ..... 2.7 lbs

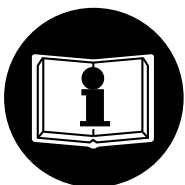
## CAT700MB

### Blue Blaster

Copyright © Professional Tool Products, 2010  
 All rights reserved

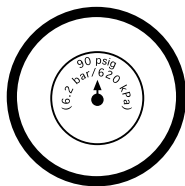
# !WARNING

## FAILURE TO OBSERVE THESE WARNINGS COULD RESULT IN INJURY.



### THIS INSTRUCTION MANUAL CONTAINS IMPORTANT SAFETY INFORMATION.

### READ THIS INSTRUCTION MANUAL CAREFULLY AND UNDERSTAND ALL INFORMATION BEFORE OPERATING THIS TOOL.



- Always operate, inspect and maintain this tool in accordance with American National Standards Institute Safety Code of Portable Air Tools (ANSI B186.1) and any other applicable safety codes and regulations.



- For safety, top performance and maximum durability of parts, operate this tool at 90 psig; 6.2 bar max air pressure with 3/8" diameter air supply hose.



- Always wear impact-resistant eye and face protection when operating or performing maintenance on this tool. Always wear hearing protection when using this tool.



- High sound levels can cause permanent hearing loss. Use hearing protection as recommended by your employer or OSHA regulation.



- Keep the tool in efficient operating condition.
- Operators and maintenance personnel must be physically able to handle the bulk, weight and power of this tool.



- Air under pressure can cause severe injury. Never direct air at yourself or others. Always turn off the air supply, drain hose of air pressure and detach tool from air supply before installing, removing or adjusting any accessory on this tool, or before performing any maintenance on this tool. Failure to do so could result in injury. Whip hoses can cause serious injury. Always check for damaged, frayed or loose hoses and fittings, and replace immediately. Do not use quick detach couplings at tool. See instructions for correct set-up.

- Air powered tools can vibrate during use. Vibration, repetitive motions or uncomfortable positions over extended periods of time may be harmful to your hands and arms. Discontinue use of tool if discomfort, tingling feeling or pain occurs. Seek medical advice before resuming use.



- Place the tool on the work before starting the tool.
- Slipping, tripping and/or falling while operating air tools can be a major cause of serious injury or death. Be aware of excess hose left on the walking or work surface.



- Keep body working stance balanced and firm. Do not overreach when operating the tool.



- Anticipate and be alert for sudden changes in motion during start up and operation of any power tool.
- Do not carry tool by the hose. Protect the hose from sharp objects and heat.
- Keep away from rotating end of tool. Do not wear jewelry or loose clothing. Secure long hair. Scalping can occur if hair is not kept away from tool and accessories. Choking can occur if neckwear is not kept away from tool and accessories.

- Correct wire belt and eraser mounting is necessary to prevent injury. Do not use wire belts or eraser wheels that have been broken or damaged in any way.

- Wheel hubs should be a free fit on the spindle to prevent stress at the mounting location. Use only hubs that come with the metal blaster for mounting wire belts and eraser wheels.

- Flat washers or other adapters may over stress the wheel hub. Always use factory recommended mounting hardware.

- Tighten the wheel hub on the spindle to prevent spin off with the tool turned off and air supply disconnected.

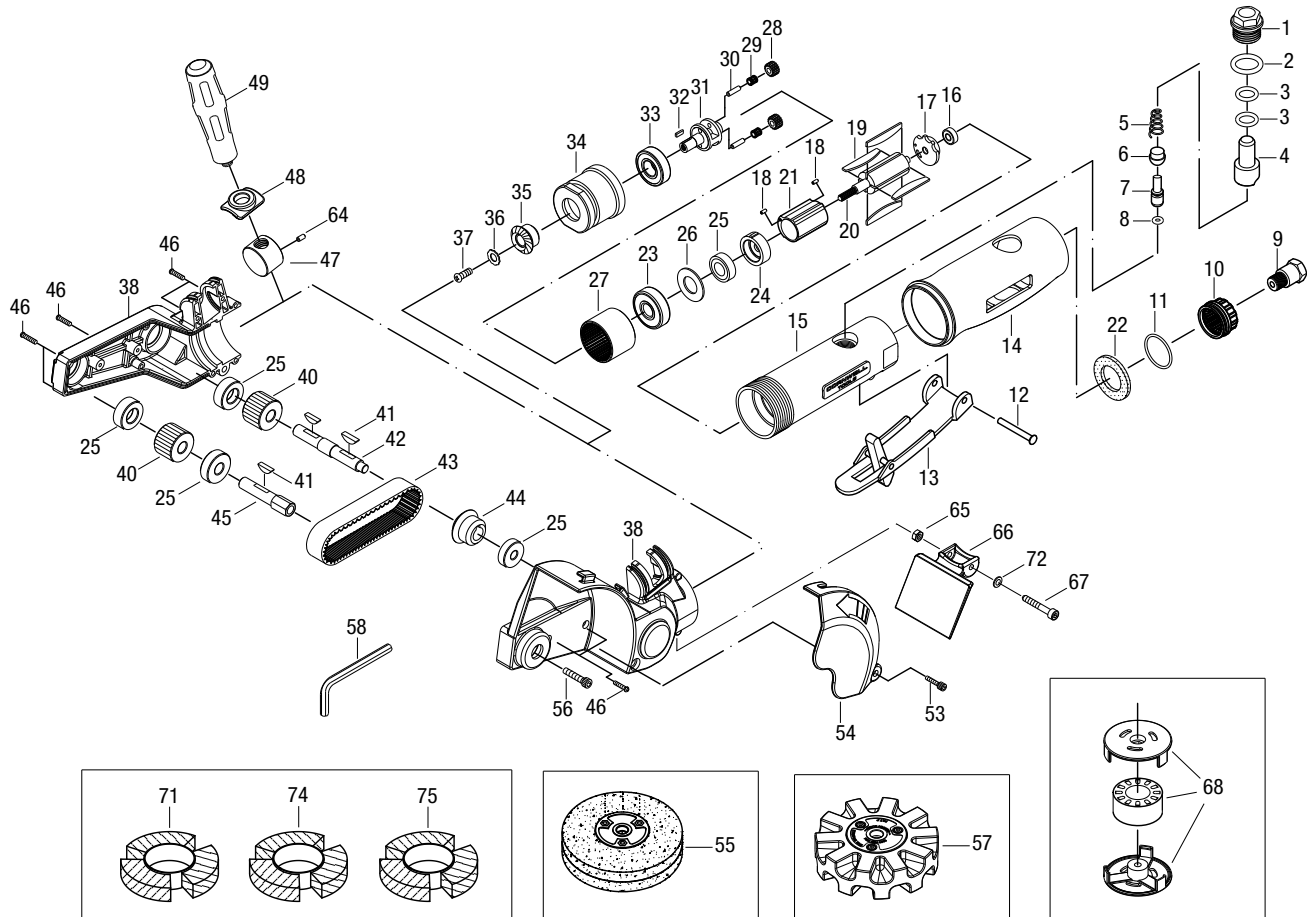
- Do not lubricate tools with flammable or volatile liquids such as kerosene, diesel or jet fuel.

- Do not force tool beyond its rated capacity.

- Do not remove any labels. Replace any damaged labels.

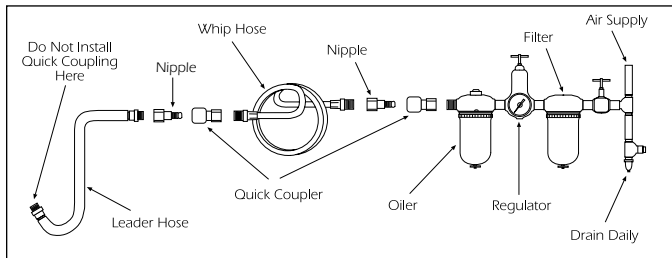
- Use accessories recommended by Cornwell Tools.

## PARTS DRAWING



Ref. #	Item #	DESCRIPTION	QTY	Ref #	Item#	DESCRIPTION	QTY	
1	RS31501	Screw	1	40	RS103940	Toothed Pulley	2	
2	RS31502	O-Ring (P12)	1	41	RS700MB41	Key (3 x 13)	3	
3	RS31503	O-Ring (P8)	2	42	RS103942	Belt Drive Shaft	1	
4	RS31504	Air Regulator	1	43	RS103943	Toothed Belt	1	
5	RS31505	Spring	1	44	RS103944	Left Bevel Gear (20T)	1	
6	RS31506	Valve Stem Bushing	1	45	RS103945	Belt Drive Shaft	1	
7	RS31507	Valve Stem	1	46	RS103946	Screw (3 x 18L)	11	
8	RS246002	O-Ring (3.5 x 1.4)	1	47	RS103947	Nut	1	
9	RS31509	Air Inlet	1	48	RS103948	Handle Ring	1	
10	RS700MB10	Exhaust Sleeve	1	49	RS103949	Handle	1	
11	RS31511	O-Ring (26.7 x 1.78)	1	53	RS103953	Screw	1	
12	RS700MB12	Spring Pin	1	54	RS103954	Cover	1	
13	RS20013CW	Lever	1	56	RS103956	Screw (1/4 x 28UNF x 1)	1	
14	RS700MB14	Grip	1	58	RS103958	Hex	1	
15	RS700MB15	Housing	1	64	RS103964	Pin (3 x 5)	1	
16	RS30516	Bearing (696ZZ)	1	65	RS700MB65	Nut	1	
17	RS31517	Rear Plate	1	66	RS700MB66	Stop Board	1	
18	RS31518	Pin (2.5 x 6L)	2	67	RS700MB67	Screw	1	
19	RS31519	Rotor Blade	4	72	RS700MB72	Washer	1	
20	RS315B21	Rotor	1	ITEMS INCLUDED IN KIT, CAT700MBK:				
21	RS30RXL21	Cylinder	1					
22	RS31522	Cone Muffler	1					
23	RS227B25	Bearing	1					
24	RS31523	Front Plate	1					
25	RS30524	Bearing (608ZZ)	5	55	CAT700MB4	Stripping Wheel	1	
26	RS31525	Washer	1	57	CAT700MB3	Eraser Wheel	1	
27	RS103927	Gear Link	1	68	RS700MBEAS	Eraser/ Adapter Set	1 set	
28	RS103928	Idler Gear	2	71	*	Wire Wheel (Fine, Straight)	1	
29	RS103929	Needle Bearing	2	74	**	Wire Wheel (Fine, Bent Tip)	1	
30	RS31528	Idler Gear Pin	2	75	***	Wire Wheel (Coarse, Bent Tip)	1	
31	RS103931	Gear Plate	1	REPLACEMENTS AVAILABLE AS:				
32	RS103932	Sliding Key	1					
33	RS29120	Bearing	1					
34	RS103934	Clamp Nut	1	71	*	CAT700MB1	Wire Wheel (Fine, Straight)	2 pc. set
35	RS103935	Bevel Gear	1	74	**	CAT700MB1B	Wire Wheel (Fine, Bent Tip)	2 pc. set
36	RS700MB36	Washer	1	75	***	CAT700MB2	Wire Wheel (Coarse, Bent Tip)	2 pc. set
37	RS700MB37	Screw	1	ALSO AVAILABLE:				
38	RS103938	Plastic Housing	1					
				RS700MBKCS	Blow Mold Case			

## Operating Instructions • Warning Information • Parts Breakdown



### AIR SUPPLY

Tools of this class operate on a wide range of air pressures. It is recommended that air pressure of these tools measures 90 PSI at the tool while running free. Higher pressure (over 90 psig; 6.2 bar) raises performance beyond the rated capacity of the tool, which will shorten tool life because of faster wear and could cause injury.

Always use clean, dry air. Dust, corrosive fumes and/or water in the air line will cause damage to the tool. Drain the air tank daily. Clean the air inlet filter screen on at least a weekly schedule. The recommended hookup procedure can be viewed in the above figure.

The air inlet used for connecting air supply has standard 1/4" NPT. Line pressure should be increased to compensate for unusually long air hoses (over 25 feet). Minimum hose diameter should be 3/8" I.D. and fittings should have the same inside dimensions and be tightly secured.

### OPERATION

When using the metal blaster tool, be careful not to exert excessive force. Too much force could be hazardous if it causes the spindle to bend or break.

Excessive speed reduction indicates too much force being applied to the work surface. Apply moderate hand pressure to the tool and allow the tools accessories to do the work.

Avoid hazardous conditions by making sure the spindle screw is tightly secured in the spindle.

### LUBRICATION

Lubricate the air motor daily with quality air tool oil. If no air line oiler is used, run 1/2 oz. of oil through the tool. The oil can be squirted into the tool air inlet or into the hose at the nearest connection to the air supply, then run the tool.

### WARRANTY COVERAGE

Cornwell Quality Tools Company ("Cornwell") warrants this product against defects in material and workmanship for a period of ONE (1) YEAR from the date of original retail purchase. Subject to the conditions and limitations set forth below, Cornwell will, at its option, either repair or replace any part of the product(s) that proves defective by reason of improper workmanship or materials.

This warranty does not cover any damage to this product that results from accident, abuse, misuse, natural or personal disaster, or any unauthorized disassembly, repair, or modification. Repairs, disassembly and modification are only authorized to be made by Cornwell or a Cornwell Authorized Warranty Center.

#### WARRANTY SERVICE

In order to have your tool repaired, return the tool to any Cornwell Authorized Warranty Center, freight prepaid. Please include a copy of your proof of purchase and a brief description of the problem. The tool will be inspected and if any part or parts are found to be defective in material or workmanship, they will be repaired free of charge, and the repaired tool will be returned to you freight prepaid.

#### EXCLUSIONS AND LIMITATIONS

**THIS WARRANTY AND THE REMEDIES SET FORTH ABOVE ARE EXCLUSIVE AND IN LIEU OF ALL OTHER WARRANTIES, REMEDIES AND CONDITIONS, WHETHER ORAL OR WRITTEN, EXPRESS OR IMPLIED. CORNWELL SPECIFICALLY DISCLAIMS ANY AND ALL IMPLIED WARRANTIES, INCLUDING, TO THE EXTENT PERMITTED BY APPLICABLE LAW, ANY WARRANTIES OF MERCHANTABILITY AND FITNESS FOR A PARTICULAR PURPOSE. IF CORNWELL CANNOT LAWFULLY DISCLAIM IMPLIED WARRANTIES UNDER THIS LIMITED WARRANTY, ALL SUCH IMPLIED WARRANTIES ARE LIMITED IN DURATION TO THE DURATION OF THIS WARRANTY.**

**IN NO EVENT SHALL CORNWELL BE LIABLE TO THE PURCHASER OR TO THE USER OF A CORNWELL PRODUCT FOR ANY SPECIAL, INCIDENTAL OR CONSEQUENTIAL DAMAGES BASED UPON BREACH OF WARRANTY, BREACH OF CONTRACT, NEGLIGENCE, TORT, OR ANY OTHER LEGAL THEORY. SUCH DAMAGES INCLUDE, WITHOUT LIMITATION, EXPENSES, LOST REVENUES, LOST SAVINGS, LOST PROFITS, OR ANY OTHER INCIDENTAL OR CONSEQUENTIAL DAMAGES ARISING FROM THE PURCHASE, USE OR INABILITY TO USE THE CORNWELL PRODUCT.**

Some states do not allow the exclusion or limitation of incidental or consequential damages or exclusions or limitation on the duration of implied warranties or conditions, so the above limitations or exclusions may not apply to you. This warranty gives you specific legal rights, and you may also have other rights that vary by state.

Repair kits and replacement parts are available for many Cornwell products, regardless of whether or not the product is still covered by a warranty plan.

Cornwell Quality Tools Company  
667 Seville Road • Wadsworth, OH 44281-1094