

SPECIFICATIONS

Performance Rating: Heavy Duty
 Max. Free Speed..... 1000 RPM
 Orbital Stroke 5 MM
 Pad Size..... 6"
 Air Inlet 1/4" NPTF
 Min. Air Hose Size..... 3/8" ID
 Recommended Air Pressure 90 PSI
 Height 4.25"
 Length 10.5"
 Weight 3.5 LBS.
 Air Consumption 3 CFM
 Sound Level 82 dBA



⚠ WARNING

**RATED RPM OF THE ACCESSORY USED
 MUST EXCEED THE MAXIMUM TOOL
 RPM SHOWN**



**ALWAYS READ
 INSTRUCTIONS BEFORE
 USING POWER TOOLS**



**ALWAYS WEAR
 DUST MASK
 OR RESPIRATOR**



**WEAR HEARING
 PROTECTION**



**AVOID PROLONGED
 EXPOSURE TO VIBRATION**



**AVOID PROLONGED
 EXPOSURE TO VIBRATION**



⚠ WARNING

Some dust created by power sanding, sawing, grinding, drilling, and other construction activities contains chemicals known to cause cancer, birth defects or other reproductive harm. Some examples of these chemicals are:

- lead from lead-based paints,
- crystalline silica from bricks and cement and other masonry products, and
- arsenic and chromium from chemically-treated lumber.

Your risk from these exposures varies, depending on how often you do this type of work. To reduce your exposure to these chemicals: work in a well ventilated area, and work with approved safety equipment, such as those dust masks that are specially designed to filter out microscopic particles.

CAT650HD 6" Gear Driven Sander

Copyright © Professional Tool Products, 2013
 All rights reserved.

WARNING

FAILURE TO OBSERVE THESE WARNINGS COULD RESULT IN INJURY.



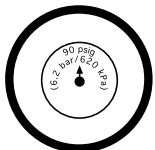
THIS INSTRUCTION MANUAL CONTAINS IMPORTANT SAFETY INFORMATION.

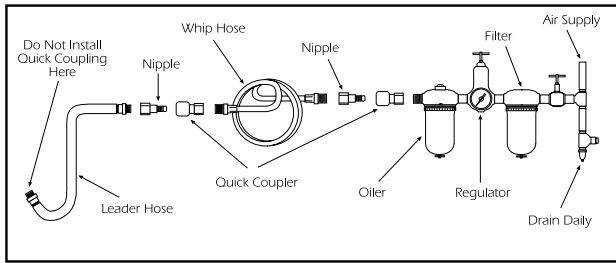
READ THIS INSTRUCTION MANUAL CAREFULLY AND UNDERSTAND ALL INFORMATION **BEFORE** OPERATING THIS TOOL.

- Always operate, inspect and maintain this tool in accordance with American National Standards Institute Safety Code of Portable Air Tools (ANSI B186.1) and any other applicable safety codes and regulations.
- For safety, top performance and maximum durability of parts, operate this tool at 90 psig 6.2 bar max air pressure with 3/8" diameter air supply hose.
- Always wear impact-resistant eye and face protection when operating or performing maintenance on this tool. Always wear hearing protection when using this tool.
- High sound levels can cause permanent hearing loss. Use hearing protection as recommended by your employer or OSHA regulation.
- Keep the tool in efficient operating condition.
- Operators and maintenance personnel must be physically able to handle the bulk, weight and power of this tool.
- Air under pressure can cause severe injury. Never direct air at yourself or others. Always turn off the air supply, drain hose of air pressure and detach tool from air supply before installing, removing or adjusting any accessory on this tool, or before performing any maintenance on this tool. Failure to do so could result in injury. Whip hoses can cause serious injury. Always check for damaged, frayed or loose hoses and fittings, and replace immediately. Do not use quick detach couplings at tool. See instructions for correct set-up.
- Air powered tools can vibrate in use. Vibration, repetitive motions or uncomfortable positions over extended periods of time may be harmful to your hands and arms. Discontinue use of tool if discomfort, tingling feeling or pain occurs. Seek medical advice before resuming use.



- Place the tool on the work before starting the tool.
- Slipping, tripping and/or falling while operating air tools can be a major cause of serious injury or death. Be aware of excess hose left on the walking or work surface.
- Keep body working stance balanced and firm. Do not overreach when operating the tool.
- Anticipate and be alert for sudden changes in motion during start up and operation of any power tool.
- Do not carry tool by the hose. Protect the hose from sharp objects and heat.
- Tool shaft may continue to rotate briefly after throttle is released. Avoid direct contact with accessories during and after use. Gloves will reduce the risk of cuts or burns.
- Keep away from rotating end of tool. Do not wear jewelry or loose clothing. Secure long hair. Scalping can occur if hair is not kept away from tool and accessories. Choking can occur if neckwear is not kept away from tool and accessories.
- **Never mount a grinding wheel on a sander.** A grinding wheel that bursts can cause very serious injury or death when not properly guarded. Inspect backing pad before each use. Do not use if cracked or damaged.
- Avoid direct contact with moving sanding pad to prevent pinching or cutting of hands or other body parts.
- Do not lubricate tools with flammable or volatile liquids such as kerosene, diesel or jet fuel.
- Do not force tool beyond its rated capacity.
- Do not remove any labels. Replace any damaged labels.
- **DO NOT USE SANDING DISC OR ACCESSORIES ABOVE THEIR MAXIMUM RATED RPM.**





AIR SUPPLY

Tools of this class operate on a wide range of air pressures. It is recommended that air pressure of these tools measures 90 PSI at the tool while running free. Higher pressure and unclean air will shorten tool life because of faster wear and may create a hazardous condition.

Water in the air line will cause damage to the tool. Drain the air tank daily. Clean the air inlet filter screen on at least a weekly schedule. The recommended hook-up procedure can be viewed in Figure 1.

The air inlet, used for connecting air supply, has standard 1/4" NPT American Thread.

Line pressure should be increased to compensate for unusually long air hoses (over 25 feet). Minimum hose diameter should be 3/8" I.D. and fittings should have the same inside dimensions.

LUBRICATION AND MAINTENANCE

Lubricate the tool daily with a good grade of air tool oil. If no air line oiler is used, run 1/2 ounce of oil through the tool. The oil can be squirted into the tool air inlet, or into the hose at the nearest connection to the air supply, then run the tool. A rust inhibitive oil is acceptable for air tools.

WARRANTY COVERAGE

Cornwell Quality Tools Company ("Cornwell") warrants this product against defects in material and workmanship for a period of TWO (2) YEARS from the date of original retail purchase. Subject to the conditions and limitations set forth below, Cornwell will, at its option, either repair or replace any part of the product(s) that proves defective by reason of improper workmanship or materials.

This warranty does not cover any damage to this product that results from accident, abuse, misuse, natural or personal disaster, or any unauthorized disassembly, repair, or modification. Repairs, disassembly and modification are only authorized to be made by Cornwell or a Cornwell Authorized Warranty Center.

WARRANTY SERVICE

In order to have your tool repaired, return the tool to any Cornwell Authorized Warranty Center, freight prepaid. Please include a copy of your proof of purchase and a brief description of the problem. The tool will be inspected and if any part or parts are found to be defective in material or workmanship, they will be repaired free of charge, and the repaired tool will be returned to you freight prepaid.

EXCLUSIONS AND LIMITATIONS

THIS WARRANTY AND THE REMEDIES SET FORTH ABOVE ARE EXCLUSIVE AND IN LIEU OF ALL OTHER WARRANTIES, REMEDIES AND CONDITIONS, WHETHER ORAL OR WRITTEN, EXPRESS OR IMPLIED. CORNWELL SPECIFICALLY DISCLAIMS ANY AND ALL IMPLIED WARRANTIES, INCLUDING, TO THE EXTENT PERMITTED BY APPLICABLE LAW, ANY WARRANTIES OF MERCHANTABILITY AND FITNESS FOR A PARTICULAR PURPOSE. IF CORNWELL CANNOT LAWFULLY DISCLAIM IMPLIED WARRANTIES UNDER THIS LIMITED WARRANTY, ALL SUCH IMPLIED WARRANTIES ARE LIMITED IN DURATION TO THE DURATION OF THIS WARRANTY.

IN NO EVENT SHALL CORNWELL BE LIABLE TO THE PURCHASER OR TO THE USER OF A CORNWELL PRODUCT FOR ANY SPECIAL, INCIDENTAL OR CONSEQUENTIAL DAMAGES BASED UPON BREACH OF WARRANTY, BREACH OF CONTRACT, NEGLIGENCE, TORT, OR ANY OTHER LEGAL THEORY. SUCH DAMAGES INCLUDE, WITHOUT LIMITATION, EXPENSES, LOST REVENUES, LOST SAVINGS, LOST PROFITS, OR ANY OTHER INCIDENTAL OR CONSEQUENTIAL DAMAGES ARISING FROM THE PURCHASE, USE OR INABILITY TO USE THE CORNWELL PRODUCT.

Some states do not allow the exclusion or limitation of incidental or consequential damages or exclusions or limitation on the duration of implied warranties or conditions, so the above limitations or exclusions may not apply to you. This warranty gives you specific legal rights, and you may also have other rights that vary by state.

Repair kits and replacement parts are available for many Cornwell products, regardless of whether or not the product is still covered by a warranty plan.

Cornwell Quality Tools Company • 667 Seville Road • Wadsworth, OH 44281-1094

OPERATION

Select a suitable abrasive disc and make sure that it is fixed securely to the pad. Connect a suitable air supply as recommended. The air inlet used for connecting air supply has standard 1/4" NPT thread.

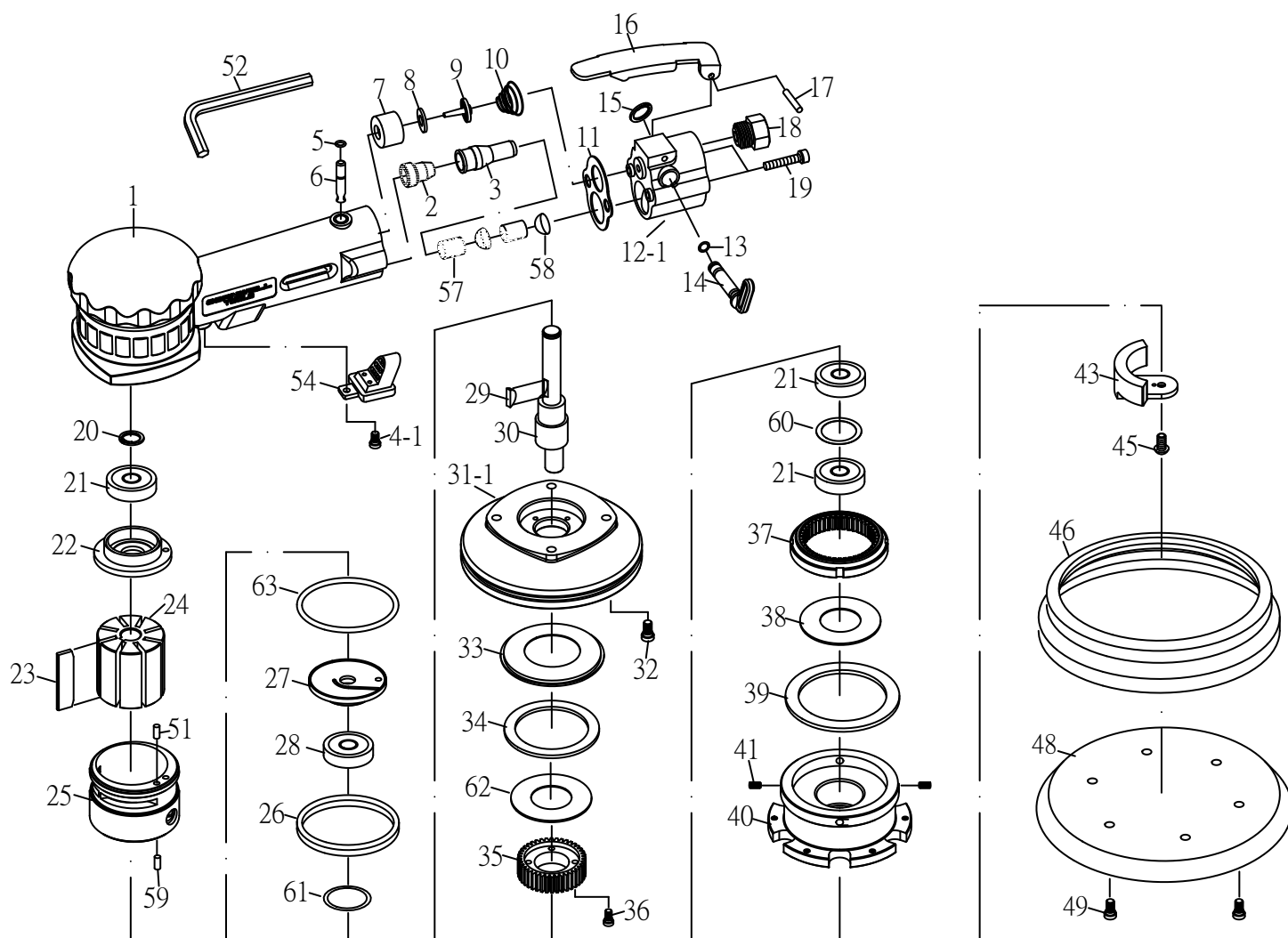
Apply the sander lightly to the work for proper sanding. Take great care when sanding around sharp edges and surfaces to avoid the disc snagging, i.e. the disc may be brought to an abrupt stop or considerably slowed which will cause the tool to kick in the operator's hands. It is always recommended to use safety glasses and a breathing mask. The sanding of certain materials may create a hazardous dust which may require special breathing equipment. Check before using the tool. Even if the machine has a low noise level, the actual sanding process may cause a noise level such that ear protectors will be required.

If there are sharp areas on the material being sanded, safety gloves are recommended. Do not continue to use abrasive discs that are worn or clogged. This will make the sanding process inefficient and the need to apply unnecessarily high force to the tool. Do not use undersized or oversized sanding discs. The disc should be no more than 1/4" larger in diameter than the pad and not smaller than the pad. An air regulator (14) is located on the side of the motor housing (1). It can be used to vary the volume of compressed air fed to the motor which will vary the speed of the sander.

TROUBLESHOOTING

Other factors outside the tool may cause loss of power or erratic action. Reduced compressor output, excessive drain on the air line, moisture or restrictions in air pipes or the use of hose connections of improper size or poor conditions may reduce air supply. If outside conditions are in order, and the tool still performs erratically, disconnect tool from hose and take tool to your nearest Cornwell authorized service center.

PARTS BREAKDOWN - CAT650HD



PARTS BREAKDOWN - CAT650HD

Ref. No.	Part No.	Description	Qty.
01	RS650HD01	Housing	1
02	RS786002	Cone Muffler	1
03	RS786003	Muffler Body	1
04-1	RS246502	Screw	1
05	RS246002	O-Ring (3.5 x 1.4)	1
06	RS246506	Valve Stem	1
07	RS246507	Bushing	1
08	RS246006	Washer	1
09	RS246509	Valve	1
10	RS246510	Spring	1
11	RS786011	Packing	1
12-1	RS246512	Housing Back Seat	1
13	RS246513	O-Ring	2
14	RS246514	Regulator	1
15	RS246515	Snap Ring	1
16	RS246516	Lever	1
17	RS31512	Pin (3mm x 24L)	1
18	RS246009	Air Inlet	1
19	RS246519	Screw w/ Washer	2
20	RS246520	Snap Ring	1
21	RS10920	Bearing	3
22	RS246522	Rear Plate	1
23	RS246523	Rotor Blade (Pk of 8)	1
24	RS246524	Rotor	1
25	RS786025	Cylinder	1
26	RS246531	O-Ring	1
27	RS246529	Front Plate	1
28	RS221RA32	Bearing	1
29	RS246533	Rotor Key	1

Ref. No.	Part No.	Description	Qty.
30	RS246534	Motor Shaft Balancer	1
31-1	RS246535	Housing Cover	1
32	RS246536	Screw	4
33	RS246537	Faceplate	1
34	RS246538	Dustproof Washer	1
35	RS246540	Gear	1
36	RS246541	Screw	4
37	RS246543	Gear Link	1
38	RS246544	Washer	1
39	RS246545	Dustproof Washer	1
40	RS246547	Gear Seat	1
41	RS246546	Screw	4
43	RS246548	Balancer 6"	1
45	RS246549	Screw	1
46	RS246550	Shroud	1
48	*	Velcro Pad 6"	1
49	RS103953	Screw	6
51	RS246526	Pin (3x12L)	1
52	RS288548	Hex Wrench	1
54	RS246554	Exhaust Sleeve	1
57	RS246503	Silencer	2
58	RS246504	Stainless Mesh	2
59	RS246040	Pin (3x8)	1
60	RS246542	Washer	1
61	RS246532	Washer	1
62	RS246539	Washer	1
63	RS246528	O-Ring	1

*Also Available:	CAT650HPAD	VELCRO PAD 6" (CAT650HD)	1
------------------	------------	--------------------------	---